

**Daily Market Brief**  
**May 28, 2026 (UTC -02:00)**

**Peter Chung** | Head of Research  
**Min Jung** | Research Associate

<b>BTC</b>	<b>\$74,429.55</b>	<b>S&amp;P500</b>	<b>7,520.46</b>	<b>US 10Y</b>	<b>4.5010%</b>	<b>WTI</b>	<b>\$90.20</b>
	-1.9%		+0.0%		+0.0100PPT		-3.9%
<b>ETH</b>	<b>\$2,025.46</b>	<b>Nasdaq</b>	<b>26,674.74</b>	<b>DXY</b>	<b>99.30</b>	<b>Gold</b>	<b>\$4,477.57</b>
	-2.3%		+0.1%		+0.1%		-1.3%

- \$BTC once again slides. As of now \$BTC is trading at \$74,429 and \$ETH is trading at \$2,025. Bitcoin dominance stands at 60.32%.
- OpenZeppelin, a leading crypto security firm with clients including Aave, Uniswap, and Coinbase, warned that AI coding agents have made smart contract vulnerability discovery so advanced that its co-founder now considers “all of DeFi unsafe.” He said the growing imbalance between attackers and defenders has become so severe that he personally advised friends to exit DeFi positions.
- A few other headlines include: South Korea’s crypto trading activity falls to one-tenth of stock market levels, Pump.fun launches creator revenue sharing model for token creators, and Aztec Labs acquires ZKPassport while pledging to keep the privacy protocol and iOS app open-source.
- During the last 24 hours, the top three gainers were \$RAIN, \$BEAT, and \$TRAC, while the top three losers were \$BILL, \$PENDLE, and \$H.

**BTC Drifts Lower as Carry Traders Step In**

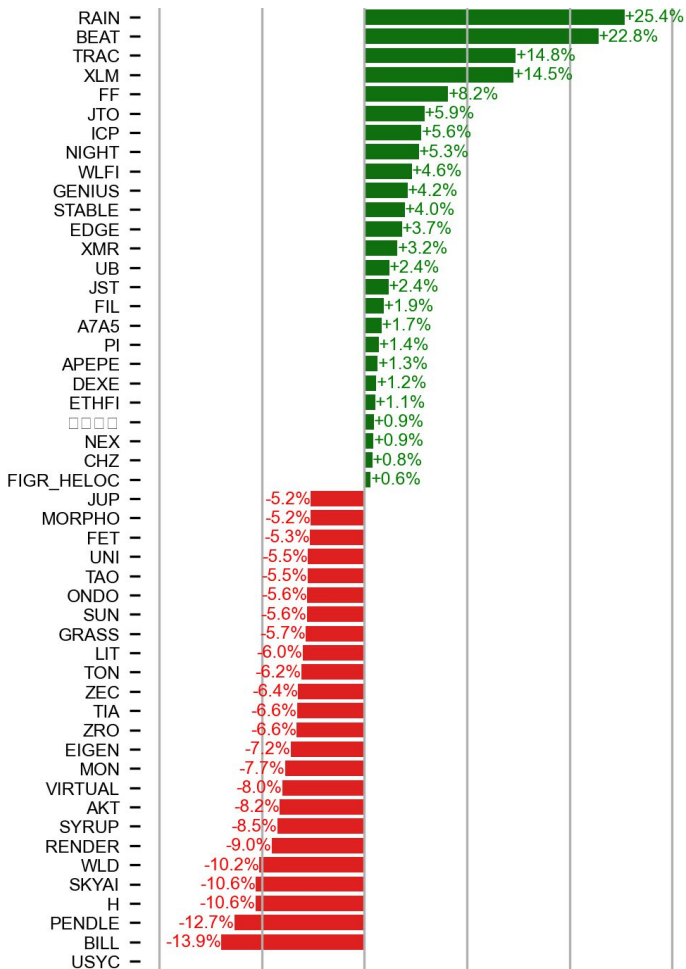
Bitcoin has displayed a peculiar trading pattern since mid-May. After hovering over \$80,000 early in the month, it has drifted lower over the past two weeks, underperforming risk assets like the S&P 500 and Nasdaq. This weakness appears largely driven by spot Bitcoin ETF outflows, with weekly redemptions reaching levels last seen during the October ‘25 and February ‘26 drawdowns. What’s notable is that, despite this, BTC is not even lower. The downward trend of course may continue, but sentiment indicators remain resilient. Perp funding rates is positive (it actually flipped positive as underperformance began). The CME Bitcoin basis yield has also trended higher, suggesting strong demand from carry traders, who are estimated to account for 30-50% of ETF flows. Bottom line: BTC’s lackluster price action likely reflects investors selling BTC ETFs to fund rotations into AI and industrials. This dynamic implies the weakness may prove temporary.



Sources: Bloomberg

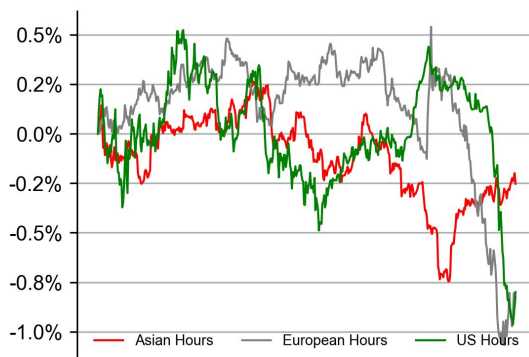
# PRICE ACTIONS

## 24H Price Change (Top/Bottom 25 from Top 200)

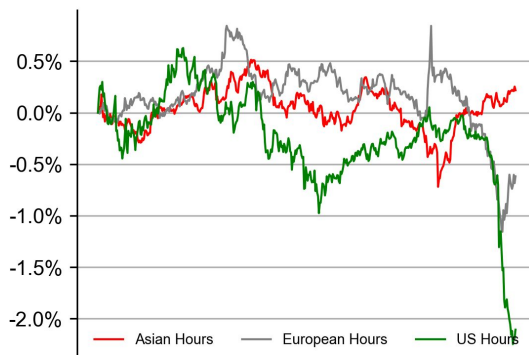


## Time Zone Analysis

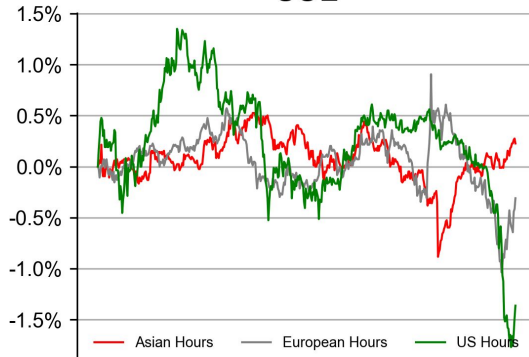
### BTC



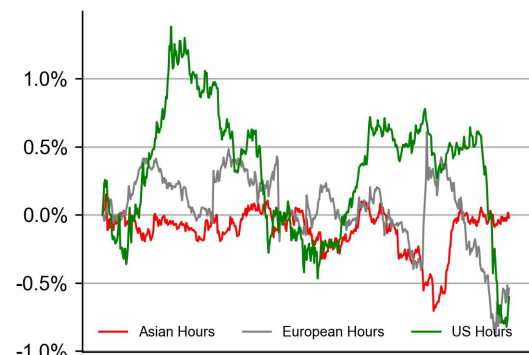
### ETH



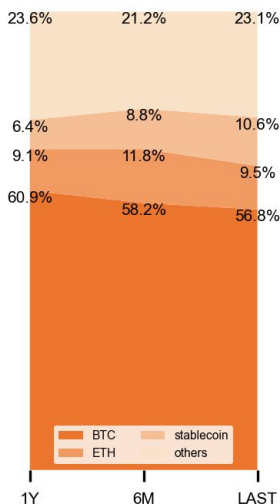
### SOL



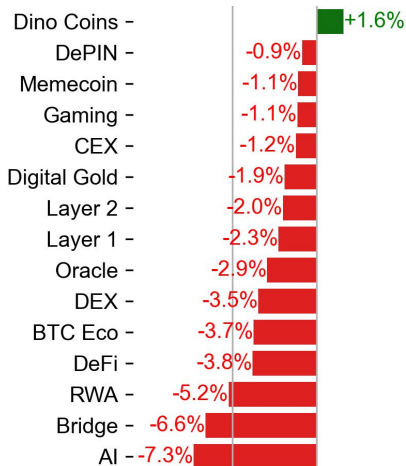
### XRP



## Dominance Ratio

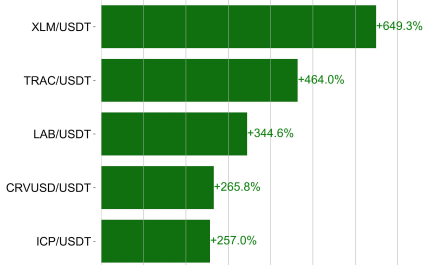


## Sector Performance

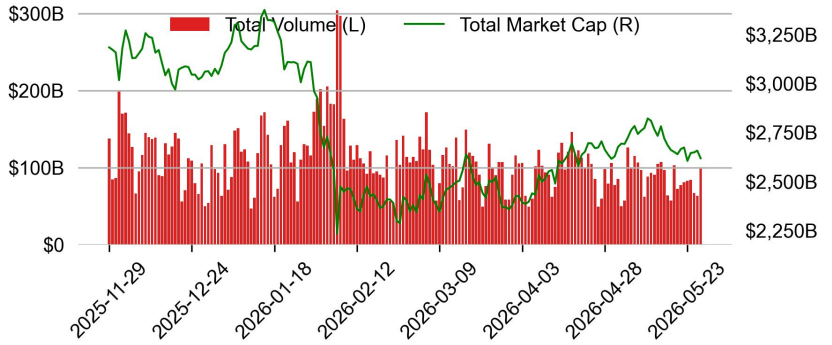


# TRADING VOLUME

## 24H Vol % Chg\*

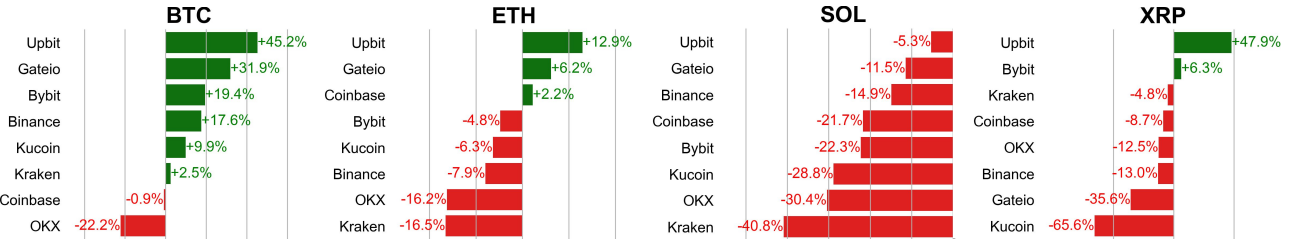


## Spot Volume



\* 5 largest 24H vol. change from the universe of top 50 assets by market cap

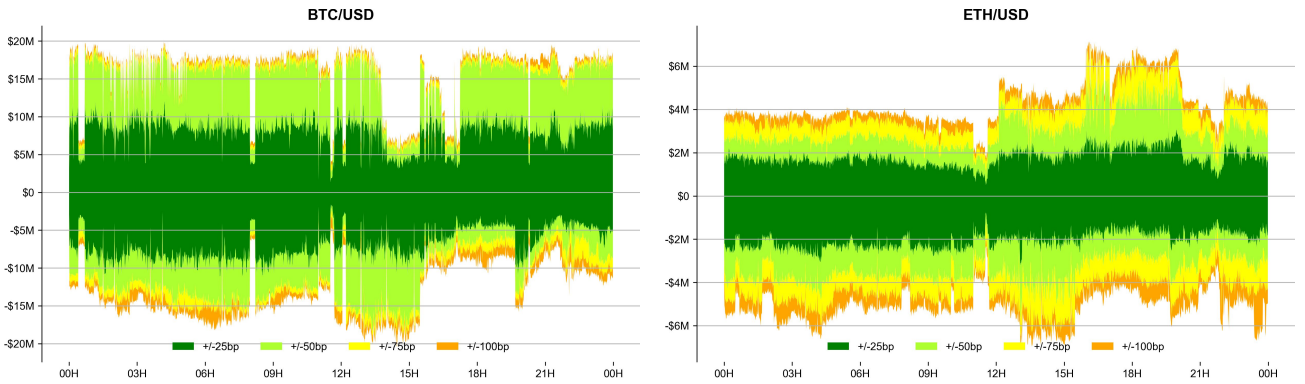
## Spot Volume Leaders (% chg vs ave)\*



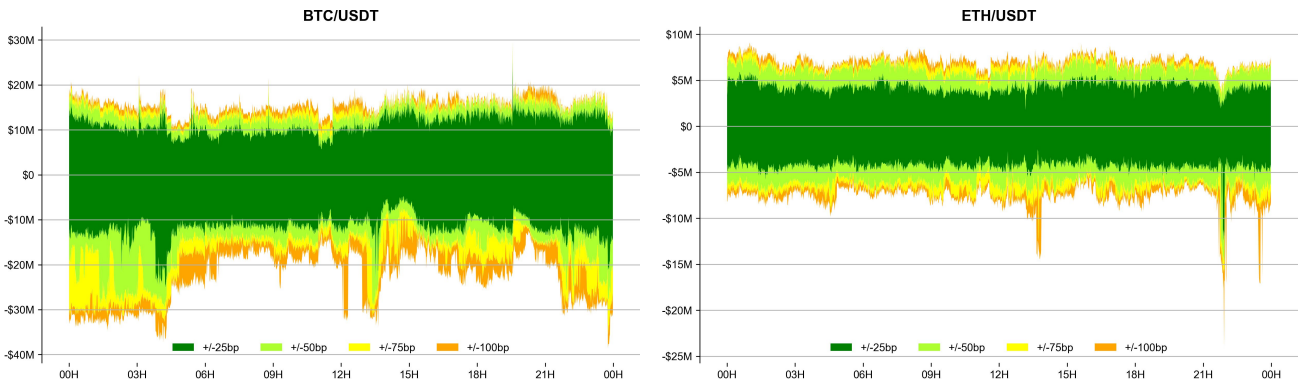
\* ranked by the % difference between the 24H volume vs. the 30-day average

## ORDER BOOK DEPTH (within 1% best bid/ask)

### Coinbase

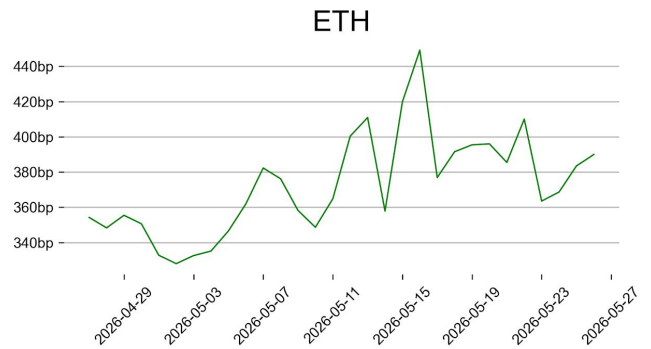
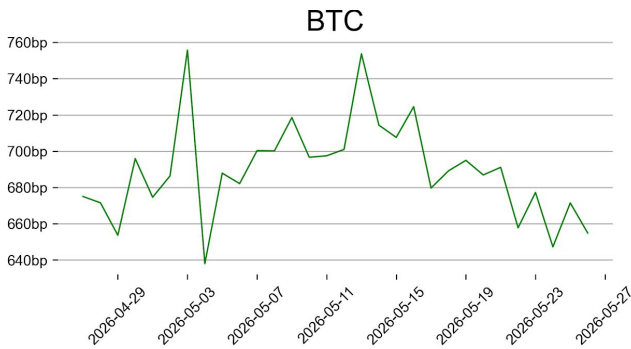


### Binance

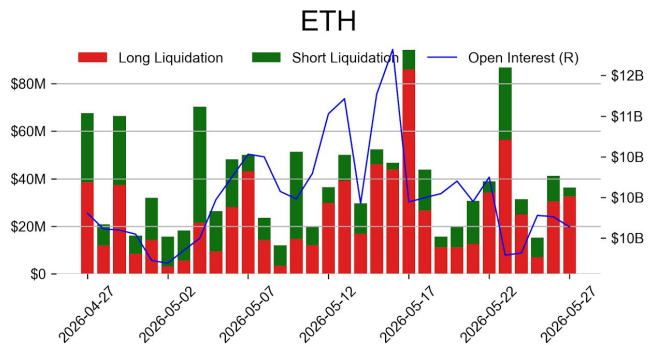
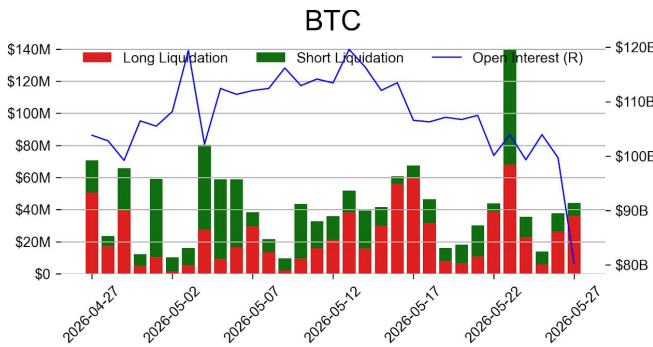


## DERIVATIVES

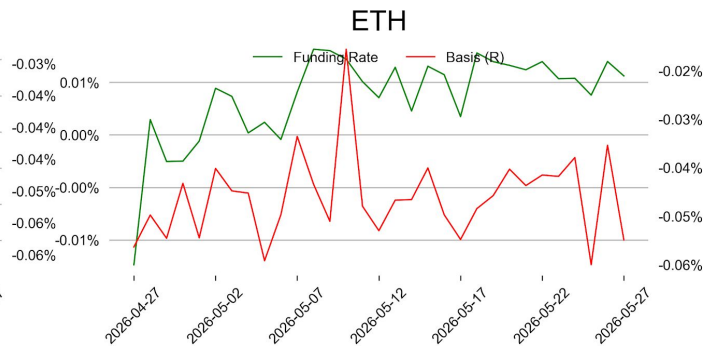
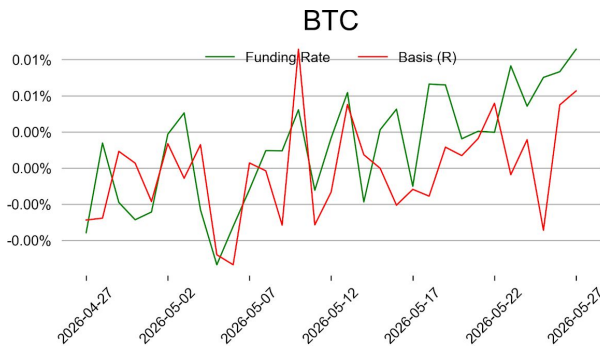
### Open Interest / Market Cap



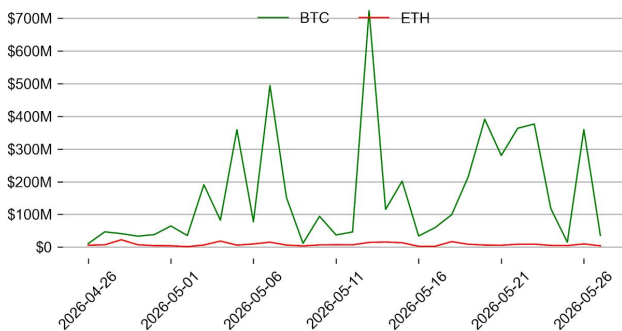
### Futures O.I. & Liquidations



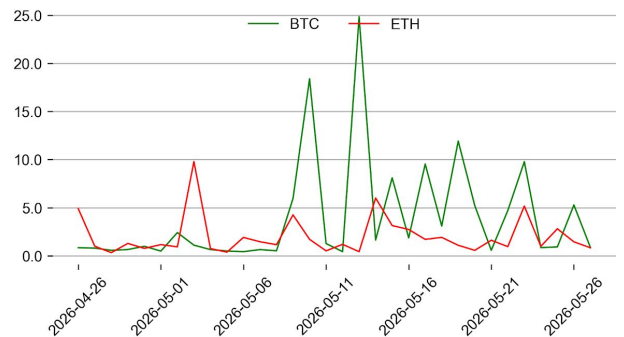
### Perps Funding Rate & Rolling Basis



### Option Volume



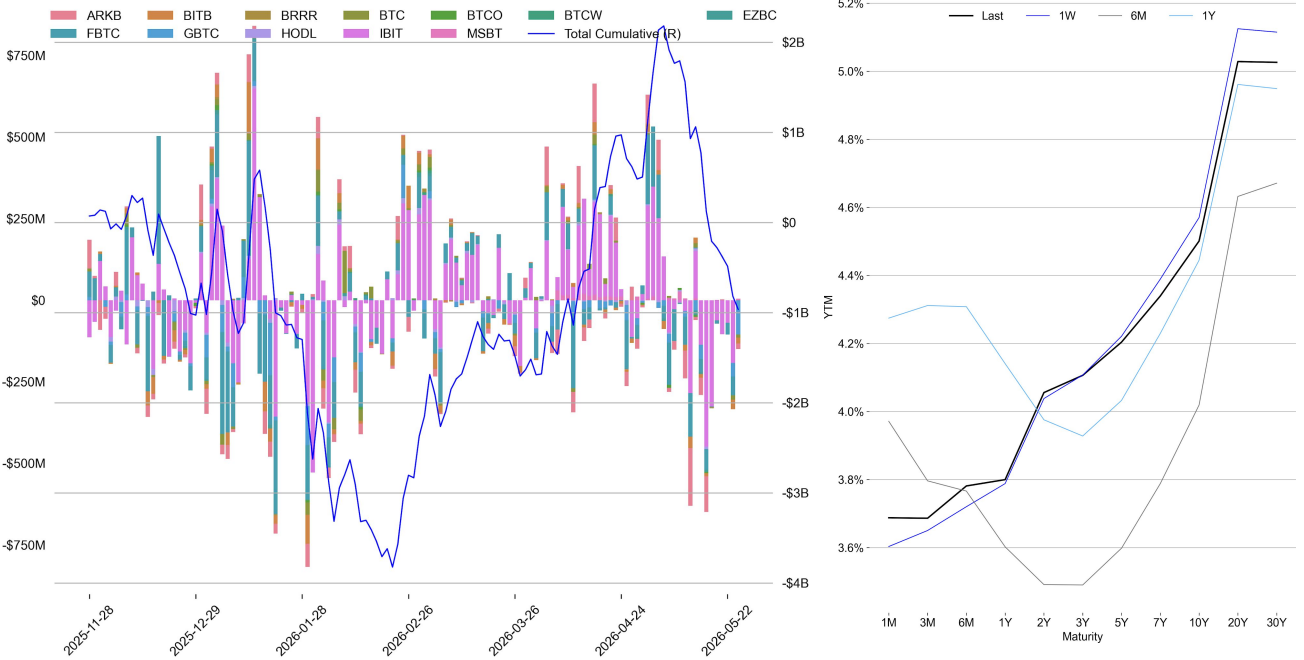
### Put Call Ratio



# TRADFI

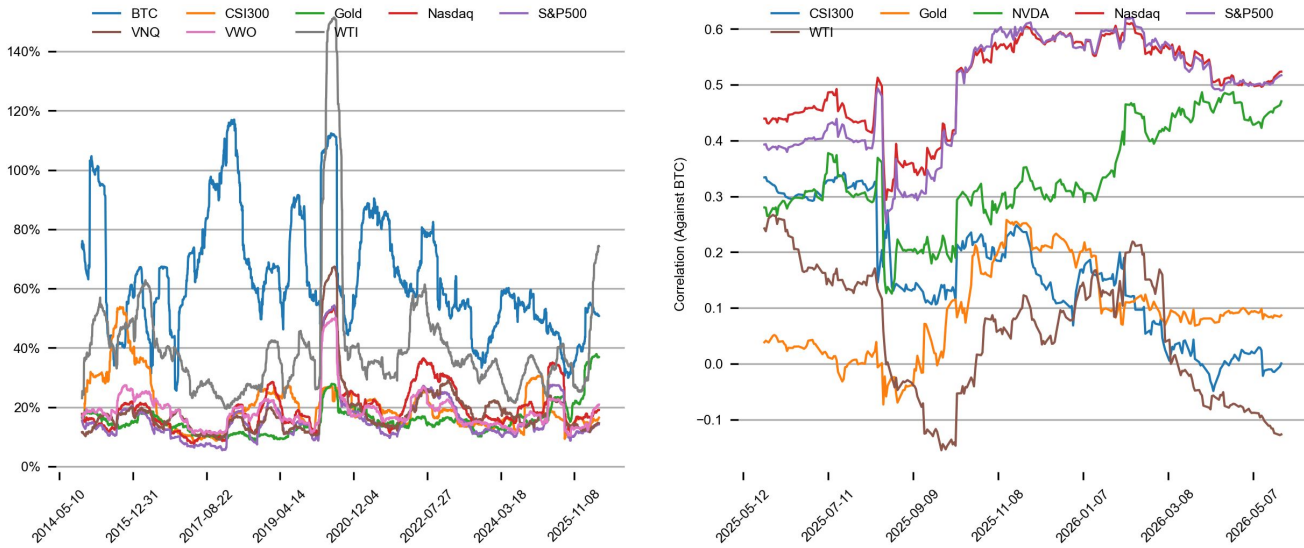
	Stocks					FX				Commodity		Crypto Equity			
	S&P500	Nasdaq	EuroStoxx50	HSI	CSI300	USD/EUR	USD/JPY	USD/CNY	DXY	WTI	Gold	COIN	MSTR	MARA	RIOT
Last	7520.46	26674.74	6067.15	25328.23	4908.17	0.8602	159.57	6.7791	99.30	90.20	4477.57	173.78	154.14	14.31	26.95
1D	0.0%	0.1%	0.0%	-1.1%	-0.8%	0.0%	0.2%	-0.1%	0.1%	-3.9%	-1.3%	-3.5%	-3.6%	0.2%	3.3%
1M	4.8%	7.2%	3.5%	-2.3%	2.9%	0.8%	0.1%	-0.6%	0.8%	-6.4%	-4.3%	-11.6%	-8.9%	28.0%	47.4%
1Y	27.0%	38.9%	12.0%	8.3%	27.8%	-2.5%	10.6%	-5.8%	-0.2%	48.1%	35.1%	-34.8%	-58.6%	-13.0%	194.9%

## BTC Spot ETF Flow | US Treasury Yield Curve



## CROSS ASSET METRICS

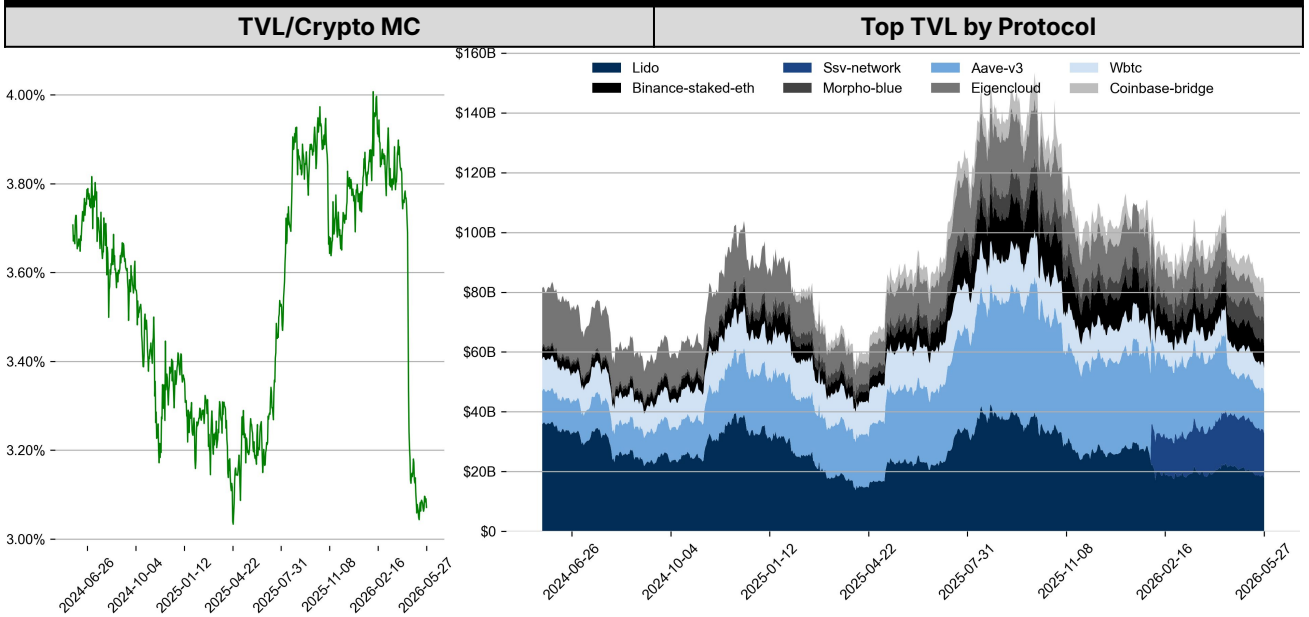
### Volatility | Correlation



## STABLECOIN

Supply Change				USDT Prem/Disc
	Market Cap (\$mn)	Share	7D Change	
USDT_Trone	88,606	27.7%	-0.2%	
USDT_Ethereum	82,002	25.6%	+0.3%	
USDT_Omni	80	0.0%	0.0%	
USDC	76,454	23.9%	+0.1%	
DAI	4,617	1.4%	+0.6%	
FDUSD	372	0.1%	-0.8%	
Others	67,796	21.2%	-1.4%	
Total	319,927	100.0%	-0.2%	

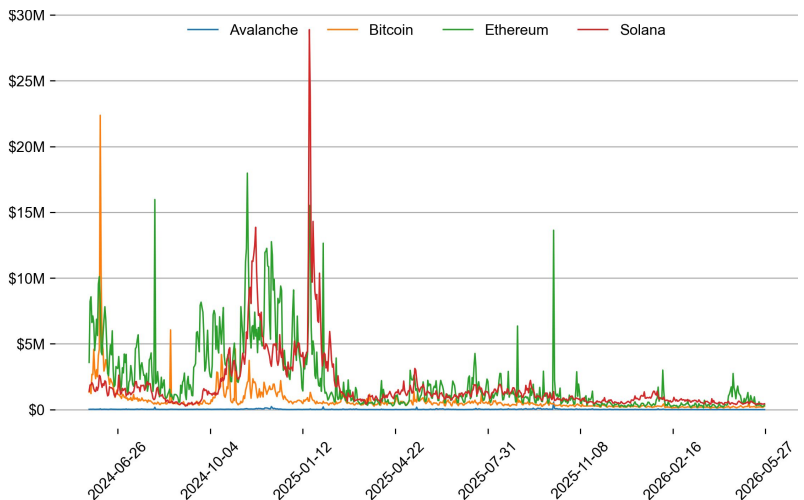
## ONCHAIN MOVES



### Top TVL Gainers\*

#	Name	7D Change
1	Rhea Lend	+49.2%
2	World Chain	+31.5%
3	Saturn	+24.9%
4	Solstice	+24.1%
5	Obol	+23.5%

### Daily Network Fees



\* 5 largest 7 day TVL change in % terms from the universe of minimum \$100m TVL protocols, according to DefiLlama.

## DATA EXPLAINER

Headers	Source	Note
<b>PRICE ACTIONS TRADING VOLUME ORDER BOOK DEPTH DERIVATIVES</b>	Presto Labs	<p><b>Time Zone Analysis</b> separates out the asset's price action according to the business hours in Asia, Europe and US region. This is to identify which geography is responsible for price actions of the last 24hrs. The cut-offs are,</p> <ul style="list-style-type: none"> <li>- Asia: UTC 22:00 -1 to UTC 6:00</li> <li>- Europe: UTC 6:00 to 14:00</li> <li>- US: UTC 14:00 to 22:00</li> </ul> <p><b>Sector</b> constituents are, AI(FET, AGIX, OCEAN), BTC Eco(BCH, BSV, ICP, STX, ORDI), CEX(BNB, CRO, OKB, KCS, BGB), Data(LINK, GRT), DePIN(ICP, FIL, AR, HNT, SIA), DEX(UNI, INJ, RUNE, SNX, DYDX, OSMO, CRV, CAKE, GMX), Digital Gold(BTC), Gaming/Metaverse(IMX, BEAM, SAND, GALA, AXS, WEMIX, RON), LO(AVAX, DOT, TIA), L2(MATIC, OP, MNT, ARB, STRK), Lending(MKR, AAVE, COMP), Liquid Staking(LDO, RPL, JTO), Meme(DOGE, SHIB, FLOKI), NFT(APE, BLUR), Payments(XRP, LTC, XLM, XMR, ZEC), RWA(ONDO, CFG), Smart Contract(ETH, BNB, SOL, ADA, TRX, TON, APT, NEAR, HBAR, VET, ALGO, FTM, SUI, FLOW, MINA). The sector return is market-cap weighted average of the constituents' returns.</p> <p><b>Exchanges:</b> 24H spot price &amp; volume % changes and dominance ratios are from CoinGecko. Time Zone Analysis is based on data from Binance. Spot volume leaders are based on data from Binance Bybit, Coinbase, Kraken, OKX, KuCoin, HTX, Upbit, Gate.io. Futures data are from Binance OKX, Bybit, KuCoin. Options data are from Deribit.</p>
<b>TRADFI</b>	Investing.com Farside Investors	<p><b>BTC Spot ETF Flows</b> are based on data shown on farside.co.uk at UTC 03:00. Due to varying data reporting schedules among ETF sponsors, the figures may not encompass data from all 10 ETFs.</p>
<b>STABLECOIN ONCHAIN MOVES</b>	DefiLlama	<p><b>Stablecoin Supply</b> is a proxy for fiat on/off ramp from TradFi into crypto.</p> <p><b>USDT Prem/Disc</b> reflects the USDT supply/demand imbalance, approximating the market's risk aversion towards USDT specifically, and/or the crypto market more broadly. The data is from Coinbase.</p> <p><b>TVL/ Crypto MC Ratio</b> = Total Value Locked / Crypto Market Cap. The ratio neutralizes the TVL changes caused by asset price fluctuations.</p>
<b>EVENTS CALENDAR</b>	CoinMarketCap Investing.com	<p><b>Events Calendar</b> provides a summary of major events happening throughout the month.</p>

\* The Daily Market Brief is published every business day, following the Singapore calendar, excluding public holidays

## About Presto

Presto is an algorithmic trading firm where researchers and engineers solve challenging problems in global financial markets. Our core strength lies in combining engineering, mathematics, and science to navigate both digital asset and traditional finance markets with precision. Presto Research, our research unit, provides expert-driven insights to help navigate these markets effectively.

Find out more at <https://www.prestolabs.io>.

Follow Presto for more content: [X](#), [LinkedIn](#)

Follow Presto Research for latest research : [X](#), [Telegram](#)

---

## Authors

**Peter Chung**, Head of Research [X](#), [Telegram](#), [LinkedIn](#)

**Min Jung**, Research Associate [X](#), [Telegram](#), [LinkedIn](#)

---

## Required Disclosures

*Any expression of opinion (which may be subject to change without notice) is personal to the author and the author makes no guarantee of any sort regarding accuracy or completeness of any information or analysis supplied. The views and opinions expressed herein are those of the author(s) and do not necessarily reflect the views of Presto or its affiliates. This material by itself, is not and should not be construed as an offer or a solicitation to deal in any investment product or to enter into any legal relations. This material is for informational purposes only and is only intended for sophisticated investors, and is not intended to provide accounting, legal, or tax advice, or investment recommendations, or an official statement of Presto or its affiliates. Presto, its affiliates and its employees make no representation and assume no liability to the accuracy or completeness of the information provided. Presto, its affiliates and its employees also do not warrant that such information and publications are accurate, up to date or applicable to the circumstances of any particular case. Certain statements in this document provide predictions and there is no guarantee that such predictions are currently accurate or will ultimately be realized. Prior results that are presented here are not guaranteed and prior results do not guarantee future performance. Recipients should consult their advisors before making any investment decision. Presto or its affiliates may have financial interests in, or relationships with, some of the assets, entities and/or publications discussed or otherwise referenced in the materials. Certain links that may be provided in the materials are provided for convenience and do not imply Presto's endorsement, or approval of any third-party websites or their content. Any use, review, retransmission, distribution, or reproduction of these materials, in whole or in part, is strictly prohibited in any form without the express written approval of Presto. Presto Research and related logos are trademarks of Presto, or its affiliates.*