

BTC	\$115,314.57 -0.5%	S&P500	6,584.29 -0.0%	US 10Y	4.0780% +0.0180PPT	WTI	\$62.68 -0.0%
ETH	\$4,604.95 -1.3%	Nasdaq	22,141.10 +0.4%	DXY	97.66 +0.1%	Gold	\$3,675.10 -0.3%

- \$BTC remained rangebound over the weekend. As of now, \$BTC is trading at \$115,314 and \$ETH is trading at \$4,604. Bitcoin dominance stands at 57.70%.
- All eyes are on this week’s FOMC meeting, where markets expect the Fed to cut its rate by 0.25% for the first time since December, citing a weakening labor market.
- A few headlines over the weekend include: the Native Markets team winning the Hyperliquid USDH stablecoin bid, Yala’s Bitcoin-backed stablecoin YU depegging after a security breach led to unauthorized minting, and Tether unveiling USA₯, a U.S.-regulated, dollar-backed stablecoin, with Bo Hines appointed as CEO of Tether USA₯.
- During the last 24 hours, the top three gainers were \$ATH, \$SAROS, and \$HASH, while the top three losers were \$FORM, \$MYX, and \$FARTCOIN.

Memecoin ETFs: A Moment of Truth

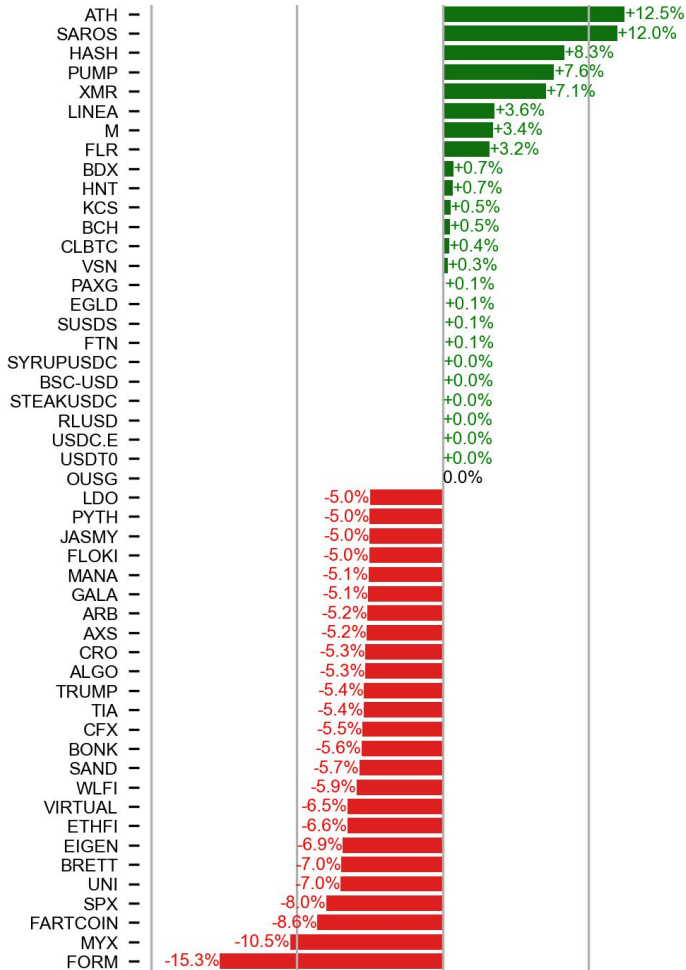
The question of whether there will be sufficient demand for memecoin ETFs is increasingly on investors’ minds as Rex-Osprey’s applications to list a new batch of crypto ETFs, including \$DOGE, \$BONK, and \$TRUMP, await approval, potentially this week after some delays. “This is the first-ever U.S. ETF to hold an asset that has no utility by design,” says Bloomberg analyst Eric Balchunas. On the positive side, \$DOGE is not your average memecoin. It ranks as the 8th largest crypto asset with a \$42B market cap. Older than \$ETH, it has proven resilient through market cycles. It’s got the best KOL other projects could only dream of having – Elon Musk. It even has a DAT, named ClearCore Solutions (\$ZONE). On the negative side, the total AUM for its ETPs, a proxy for potential ETF demand, is tiny at \$17M. The DAT’s mNAVs have recently collapsed, with some long-tail names trading at a discount, limiting their access to capital markets. This hasn’t deterred others from joining the trend, however. Another four to five \$DOGE ETF applications await listing approval in Q4 2025, some sponsored by top-tier brands like Bitwise.

DOGE US \$ Pending Listing					
DOGE US Equity		Export ▾		Page 1/5  Security Description: ETF	
Profile		Performance		Holdings	
REX-OSPREY DOGE ETF		Allocations		Organizational	
REX-Osprey DOGE ETF is an ETF incorporated in the United States. The Fund seeks investment results, before fees and expenses, that correspond to the performance of Dogecoin. The Fund invests at least 80% of its net assets in the reference asset and other assets that provide exposure to the reference asset.				FIGI BBG01X2PYT89	
				Category Cryptocurrency	
❖ Comparative Returns   COMP »					
Failed to retrieve data		Bloomberg Classification		Appropriations	
		Fund Type ETF		Leverage No	
		Asset Group Alternative		Actively Managed Yes	
		Category Gro... Macro		Swap Based Unknown	
				Derivatives Based Unknown	
				Currency Hedged No	
				Replication Strategy Actively ...	
		Securities Lending Unknown			
7 Price		N.A.	Trading Data		Characteristics
NAV	N.A.	Bid Ask Spread	N.A.	Und. Index	N.A.
INAV	N.A.	90D Avg Agg Vol	N.A.	Index Weight	Unknown
Fund Percent Premium	N.A.	Implied Liquidity	N.A.	1M Px Track. Error	N.A.
52 Wk H	N.A.	Market Cap	N.A.	1M NAV Track. Error	N.A.
52 Wk L	N.A.	Shares Out	N.A.	Inception Date	09/11/25
Options	No	Total Assets	N.A.	Expense Ratio	1.500%

Source: Bloomberg

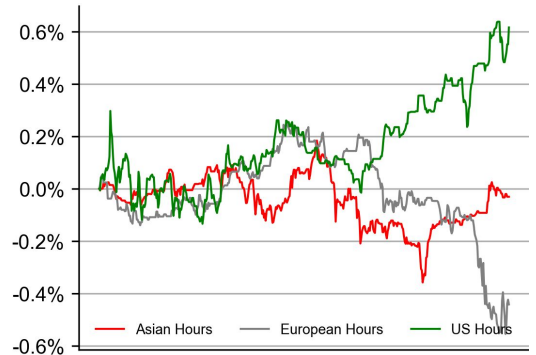
## PRICE ACTIONS

### 24H Price Change (Top/Bottom 25 from Top 200)

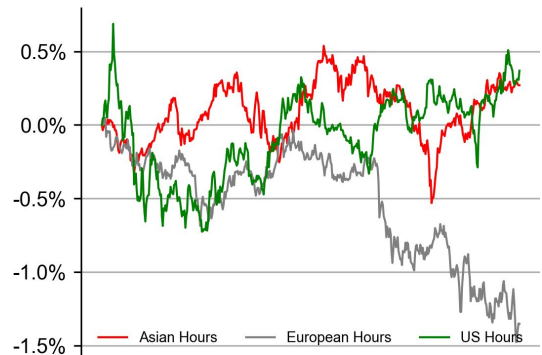


### Time Zone Analysis

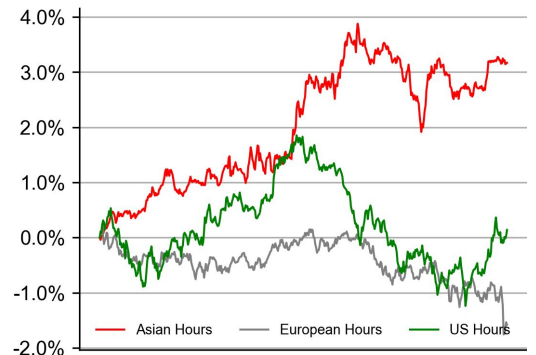
#### BTC



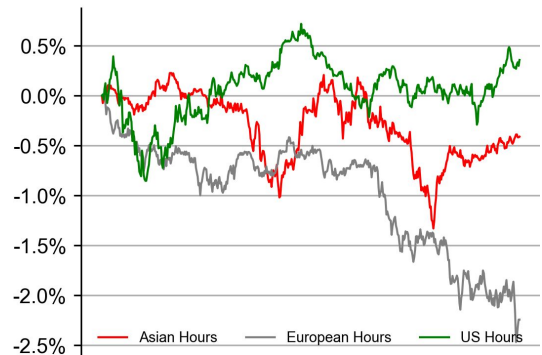
#### ETH



#### SOL

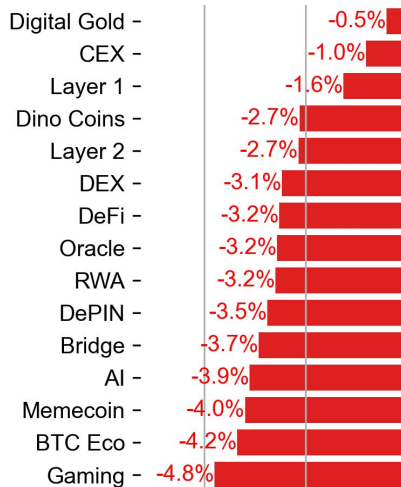
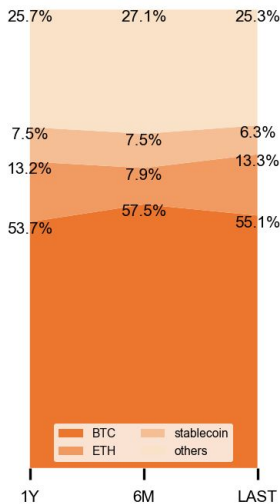


#### XRP



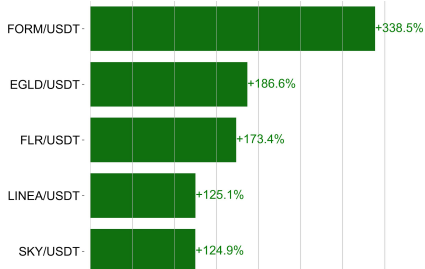
### Dominance Ratio

### Sector Performance



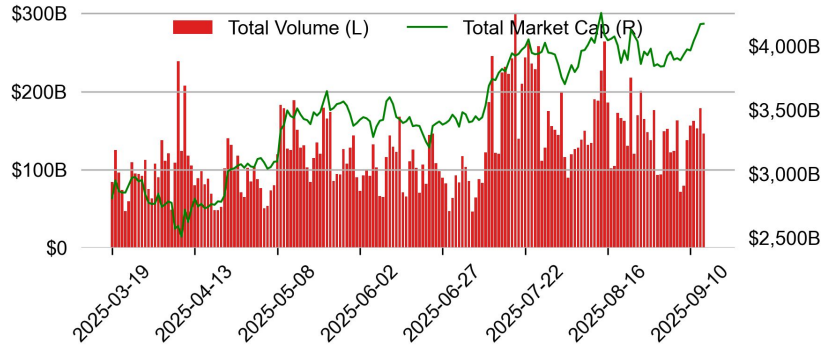
## TRADING VOLUME

### 24H Vol % Chg\*

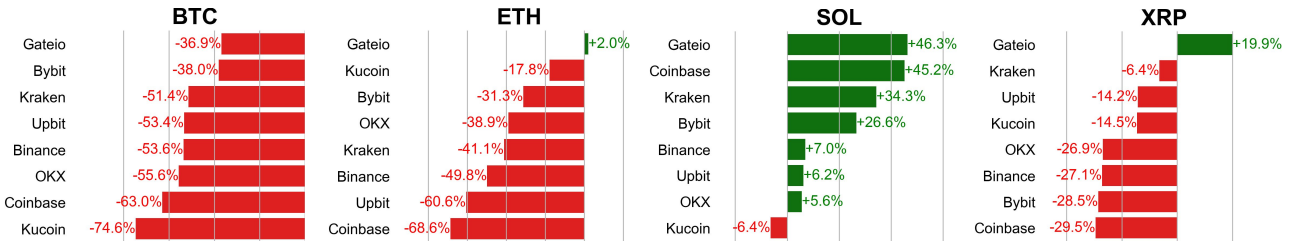


\* 5 largest 24H vol. change from the universe of top 50 assets by market cap

### Spot Volume



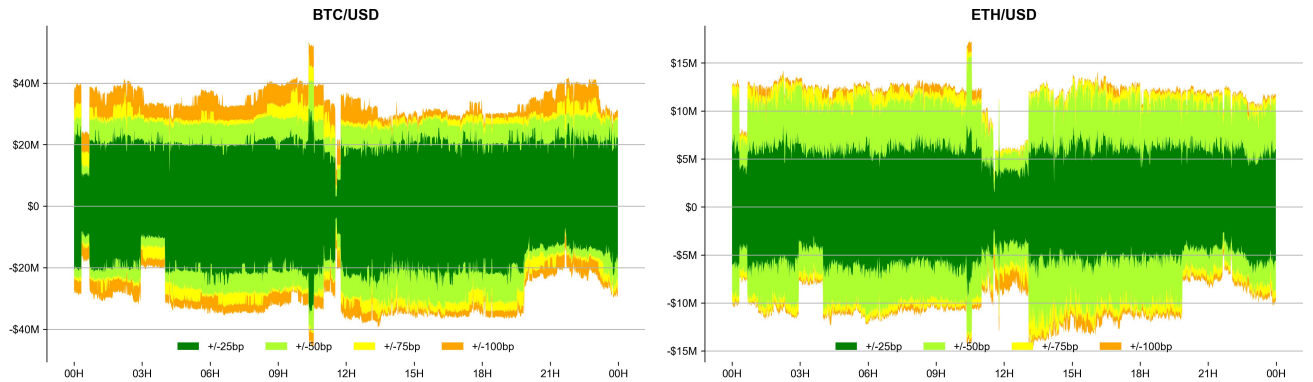
## Spot Volume Leaders (% chg vs ave)\*



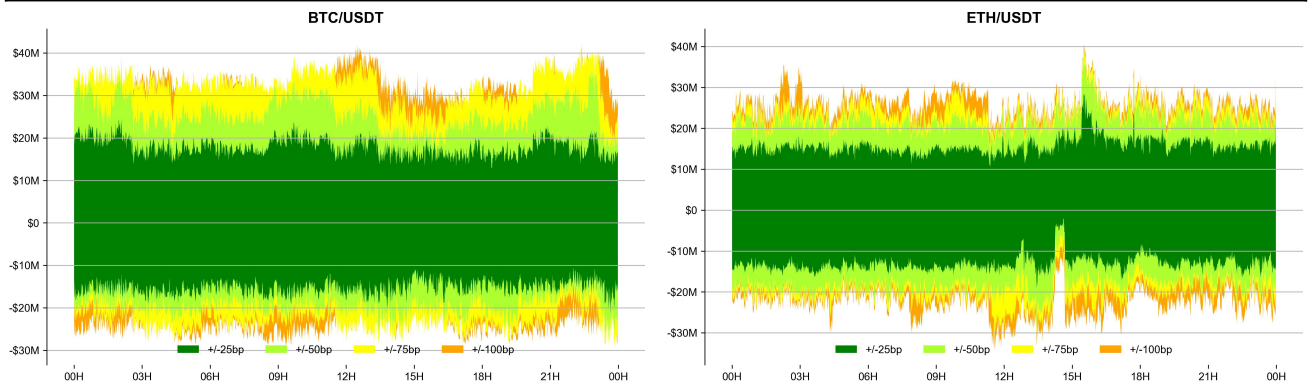
\* ranked by the % difference between the 24H volume vs. the 30-day average

## ORDER BOOK DEPTH (within 1% best bid/ask)

### Coinbase



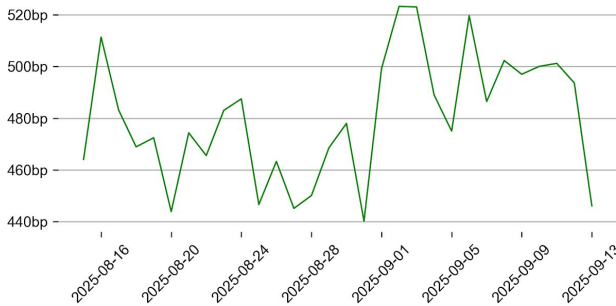
### Binance



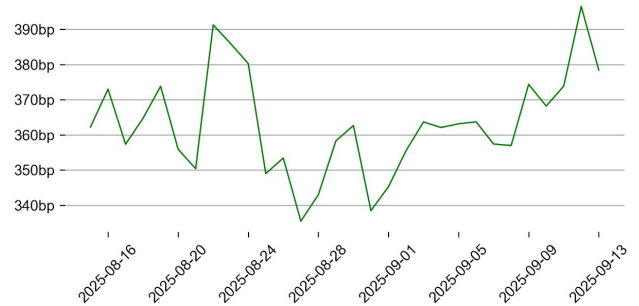
## DERIVATIVES

### Open Interest / Market Cap

#### BTC

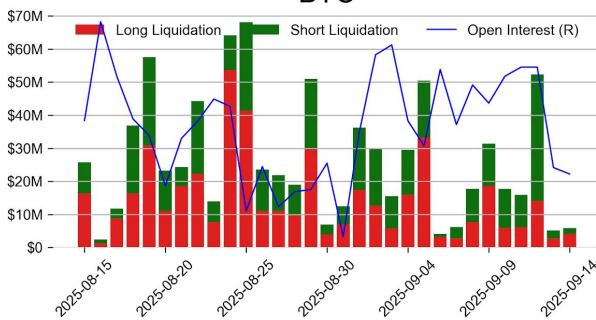


#### ETH

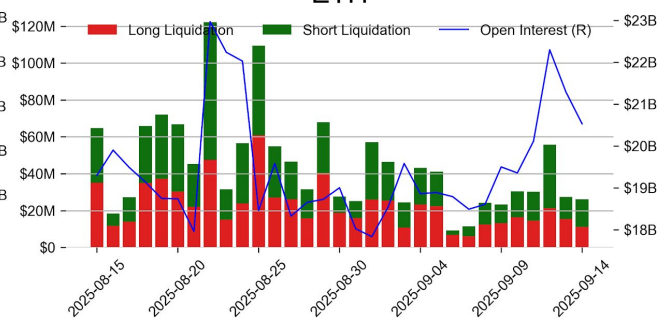


### Futures O.I. & Liquidations

#### BTC

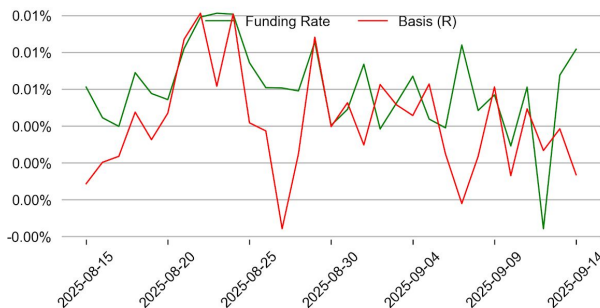


#### ETH

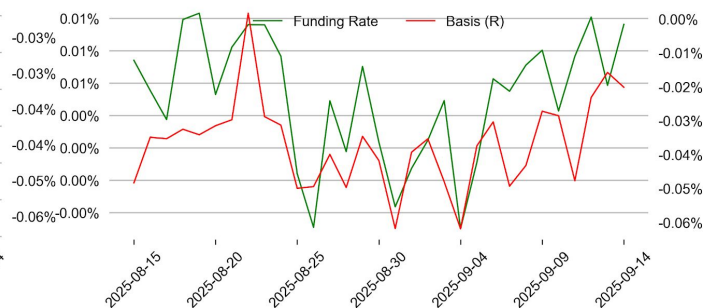


### Perps Funding Rate & Rolling Basis

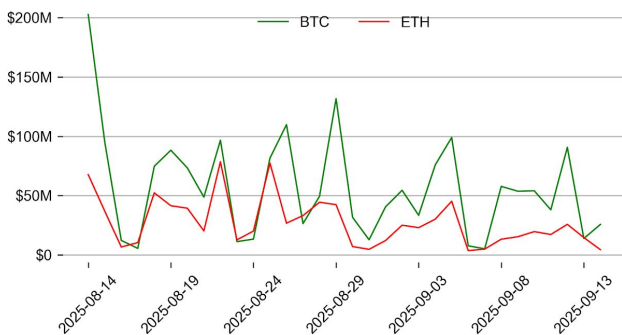
#### BTC



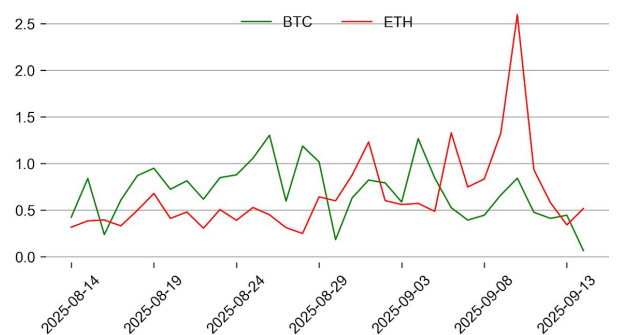
#### ETH



### Option Volume



### Put Call Ratio

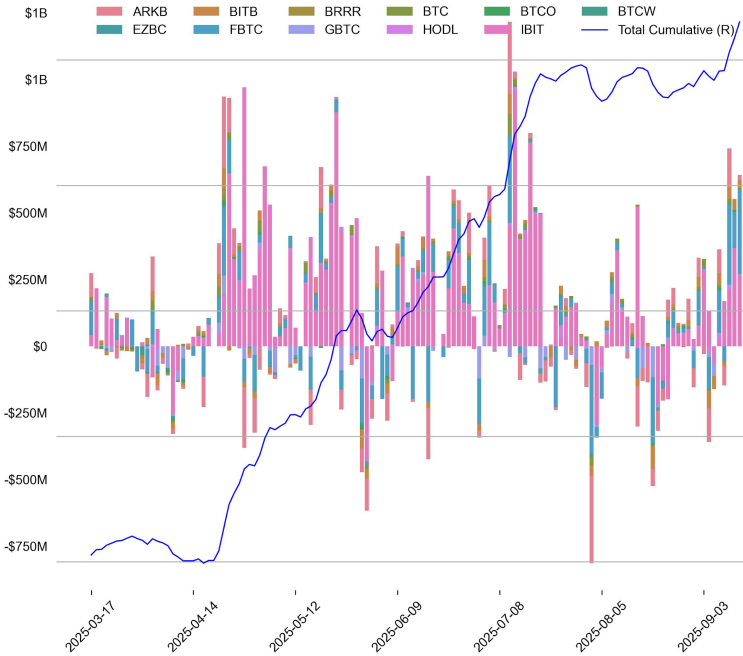




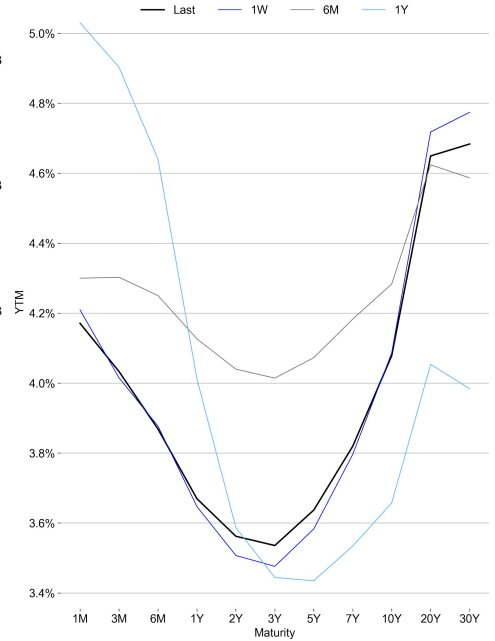
# TRADFI

	Stocks					FX				Commodity		Crypto Equity			
	S&P500	Nasdaq	EuroStoxx50	HSI	CSI300	USD/EUR	USD/JPY	USD/CNY	DXY	WTI	Gold	COIN	MSTR	MARA	RIOT
Last	6584.29	22141.10	5390.71	26388.16	4522.00	0.8529	147.68	7.1248	97.66	62.68	3675.10	323.04	331.44	16.31	15.89
1D	-0.0%	0.4%	0.1%	1.2%	-0.6%	0.1%	0.0%	0.1%	0.1%	-0.0%	-0.3%	-0.3%	1.7%	3.8%	1.5%
1M	1.8%	2.0%	0.0%	3.0%	8.3%	-0.2%	0.3%	-0.7%	-0.2%	-0.2%	8.6%	-1.2%	-15.0%	2.8%	37.1%
1Y	17.7%	26.0%	12.0%	53.1%	42.5%	-5.5%	4.9%	0.1%	-3.4%	-8.7%	41.4%	98.3%	153.5%	3.2%	126.0%

## BTC Spot ETF Flow

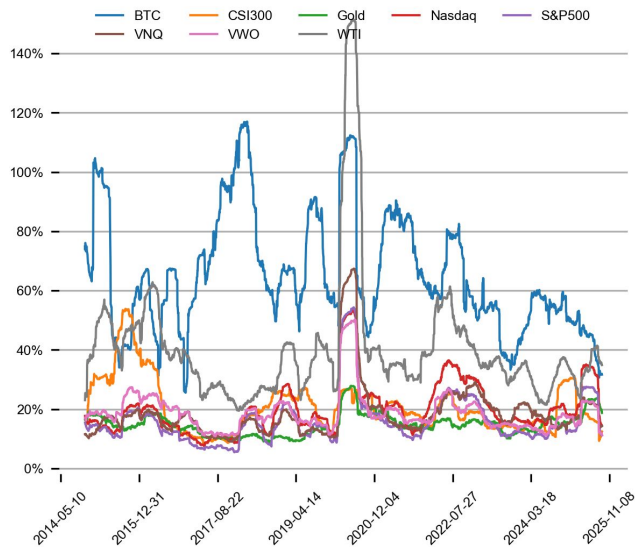


## US Treasury Yield Curve

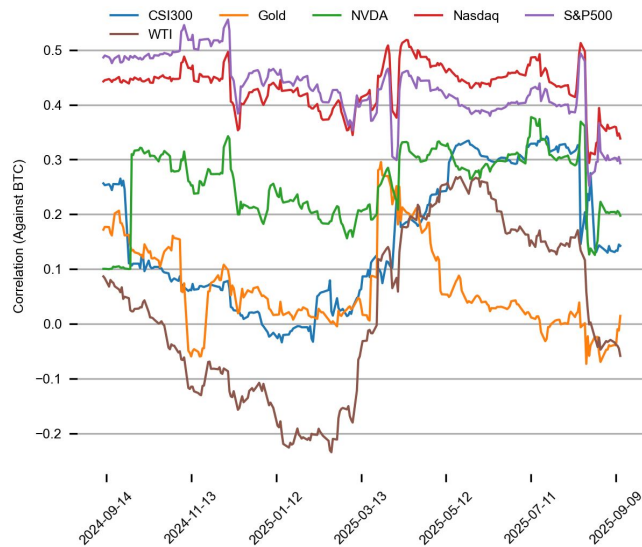


## CROSS ASSET METRICS

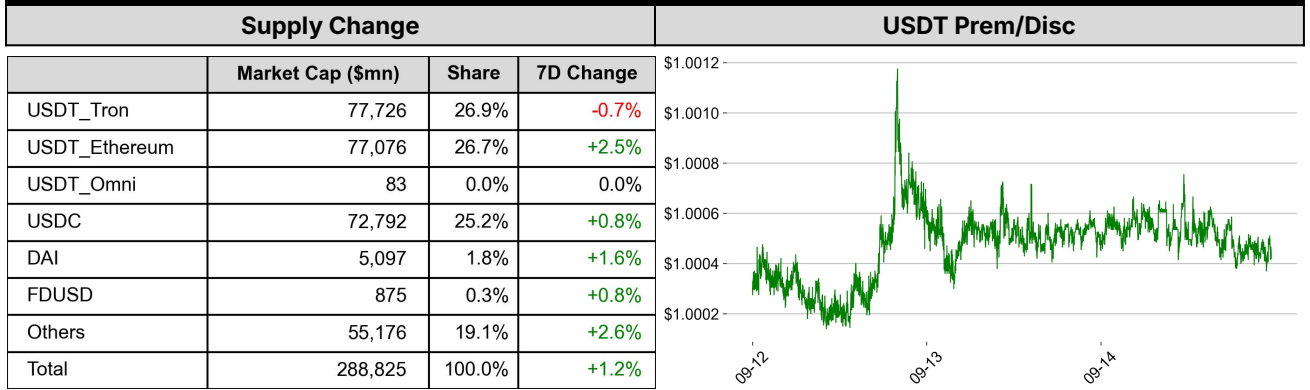
### Volatility



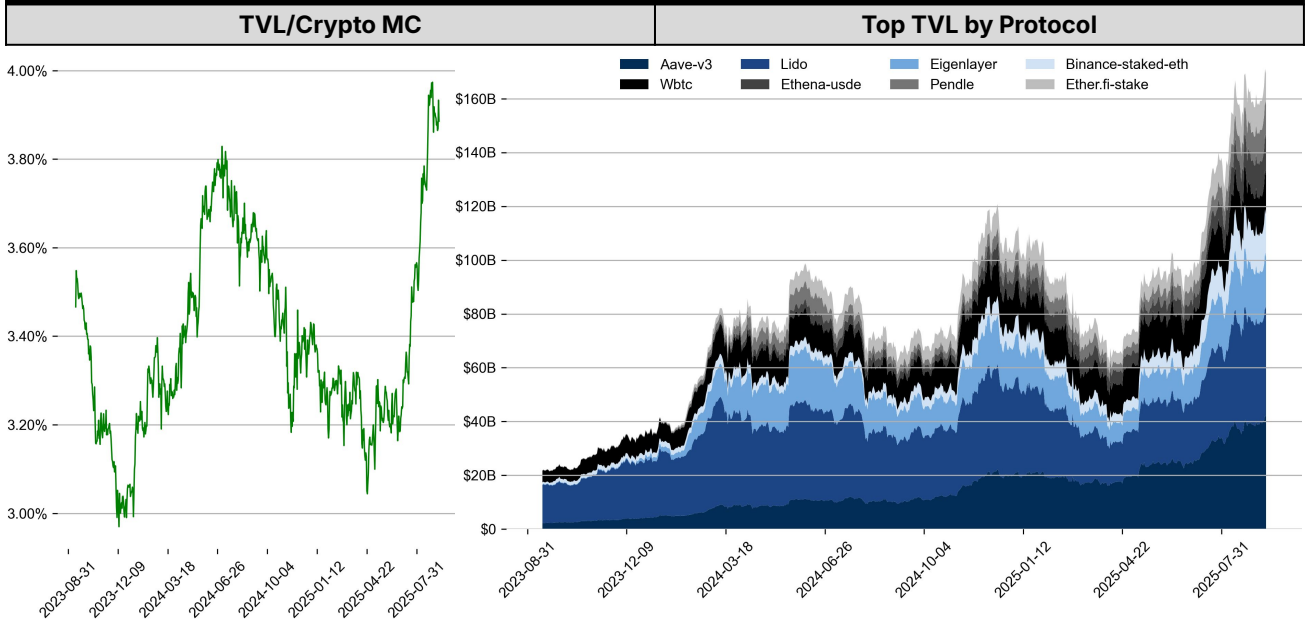
### Correlation



## STABLECOIN



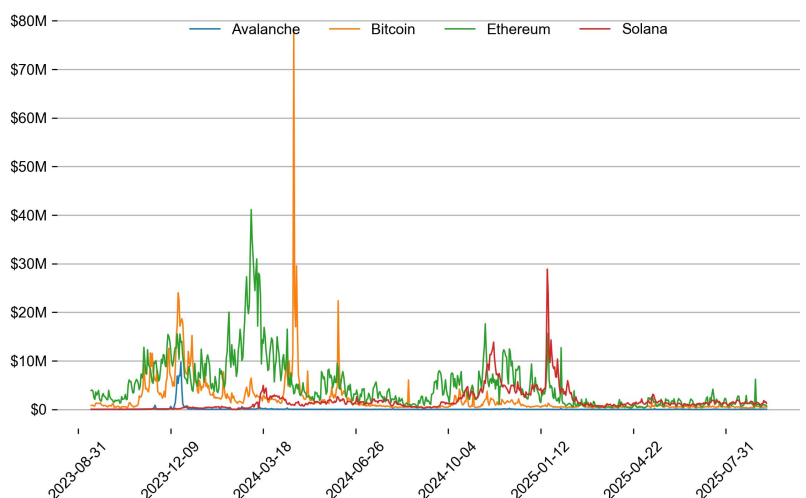
## ONCHAIN MOVES



### Top TVL Gainers\*

#	Name	7D Change
1	Upheaval V3	+300.7%
2	Linea Bridge	+288.5%
3	Theo Network thBill	+75.2%
4	USDD	+60.8%
5	USD AI	+56.9%

### Daily Network Fees



\* 5 largest 7 day TVL change in % terms from the universe of minimum \$100m TVL protocols, according to DefiLlama.

## EVENTS CALENDAR

Date	Title	Coins / Hosts
Sep 1, 2025	Claim 20% of Allocation	\$WLF1
Sep 1, 2025	\$144M Unlock	\$SUI
Sep 2, 2025	US ISM Manufacturing PMI	
Sep 2, 2025	\$26M Unlock	\$ENA
Sep 4, 2025	US ADP Non-Farm Employment Change	
Sep 5, 2025	US NFP	
Sep 9, 2025	Robinhood Summit	\$HOOD
Sep 10, 2025	US PPI	
Sep 11, 2025	US CPI	
Sep 15, 2025	\$15M Unlock	\$SEI
Sep 16, 2025	\$45M Unlock	\$ARB
Sep 22, 2025	Korea Blockchain Week	
Sep 26, 2025	US Core PCE Price Index	

## DATA EXPLAINER

Headers	Source	Note
<b>PRICE ACTIONS</b> <b>TRADING VOLUME</b> <b>ORDER BOOK</b> <b>DEPTH</b> <b>DERIVATIVES</b>	Presto Labs	<p><b>Time Zone Analysis</b> separates out the asset's price action according to the business hours in Asia, Europe and US region. This is to identify which geography is responsible for price actions of the last 24hrs. The cut-offs are,</p> <ul style="list-style-type: none"> <li>- Asia: UTC 22:00 -1 to UTC 6:00</li> <li>- Europe: UTC 6:00 to 14:00</li> <li>- US: UTC 14:00 to 22:00</li> </ul> <p><b>Sector</b> constituents are, AI(FET, AGIX, OCEAN), BTC Eco(BCH, BSV, ICP, STX, ORDI), CEX(BNB, CRO, OKB, KCS, BGB), Data(LINK, GRT), DePIN(ICP, FIL, AR, HNT, SIA), DEX(UNI, INJ, RUNE, SNX, DYDX, OSMO, CRV, CAKE, GMX), Digital Gold(BTC), Gaming/Metaverse(IMX, BEAM, SAND, GALA, AXS, WEMIX, RON), LO(AVAX, DOT, TIA), L2(MATIC, OP, MNT, ARB, STRK), Lending(MKR, AAVE, COMP), Liquid Staking(LDO, RPL, JTO), Meme(DOGE, SHIB, FLOKI), NFT(APE, BLUR), Payments(XRP, LTC, XLM, XMR, ZEC), RWA(ONDO, CFG), Smart Contract(ETH, BNB, SOL, ADA, TRX, TON, APT, NEAR, HBAR, VET, ALGO, FTM, SUI, FLOW, MINA). The sector return is market-cap weighted average of the constituents' returns.</p> <p><b>Exchanges:</b> 24H spot price &amp; volume % changes and dominance ratios are from CoinGecko. Time Zone Analysis is based on data from Binance. Spot volume leaders are based on data from Binance Bybit, Coinbase, Kraken, OKX, KuCoin, HTX, Upbit, Gate.io. Futures data are from Binance OKX, Bybit, KuCoin. Options data are from Deribit.</p>
<b>TRADFI</b>	Investing.com Farside Investors	<b>BTC Spot ETF Flows</b> are based on data shown on farside.co.uk at UTC 03:00. Due to varying data reporting schedules among ETF sponsors, the figures may not encompass data from all 10 ETFs.
<b>STABLECOIN ONCHAIN MOVES</b>	DefiLlama	<p><b>Stablecoin Supply</b> is a proxy for fiat on/off ramp from TradFi into crypto.</p> <p><b>USDT Prem/Disc</b> reflects the USDT supply/demand imbalance, approximating the market's risk aversion towards USDT specifically, and/or the crypto market more broadly. The data is from Coinbase.</p> <p><b>TVL/ Crypto MC Ratio</b> = Total Value Locked / Crypto Market Cap. The ratio neutralizes the TVL changes caused by asset price fluctuations.</p>
<b>EVENTS CALENDAR</b>	CoinMarketCap Layer GG	<b>Events Calendar</b> provides a summary of major events happening throughout the month.

\* The Daily Market Brief is published every business day, following the Singapore calendar, excluding public holidays



## About Presto

Presto is an algorithmic trading firm where researchers and engineers solve challenging problems in global financial markets. Our core strength lies in combining engineering, mathematics, and science to navigate both digital asset and traditional finance markets with precision. Presto Research, our research unit, provides expert-driven insights to help navigate these markets effectively.

Find out more at <https://www.prestolabs.io>.

Follow Presto for more content: [X](#), [LinkedIn](#)

Follow Presto Research for latest research : [X](#), [Telegram](#)

## Authors

**Peter Chung**, Head of Research [X](#), [Telegram](#), [LinkedIn](#)

**Min Jung**, Research Analyst [X](#), [Telegram](#), [LinkedIn](#)

## Required Disclosures

*Any expression of opinion (which may be subject to change without notice) is personal to the author and the author makes no guarantee of any sort regarding accuracy or completeness of any information or analysis supplied. The views and opinions expressed herein are those of the author(s) and do not necessarily reflect the views of Presto or its affiliates. This material by itself, is not and should not be construed as an offer or a solicitation to deal in any investment product or to enter into any legal relations. This material is for informational purposes only and is only intended for sophisticated investors, and is not intended to provide accounting, legal, or tax advice, or investment recommendations, or an official statement of Presto or its affiliates. Presto, its affiliates and its employees make no representation and assume no liability to the accuracy or completeness of the information provided. Presto, its affiliates and its employees also do not warrant that such information and publications are accurate, up to date or applicable to the circumstances of any particular case. Certain statements in this document provide predictions and there is no guarantee that such predictions are currently accurate or will ultimately be realized. Prior results that are presented here are not guaranteed and prior results do not guarantee future performance. Recipients should consult their advisors before making any investment decision. Presto or its affiliates may have financial interests in, or relationships with, some of the assets, entities and/or publications discussed or otherwise referenced in the materials. Certain links that may be provided in the materials are provided for convenience and do not imply Presto's endorsement, or approval of any third-party websites or their content. Any use, review, retransmission, distribution, or reproduction of these materials, in whole or in part, is strictly prohibited in any form without the express written approval of Presto. Presto Research and related logos are trademarks of Presto, or its affiliates.*