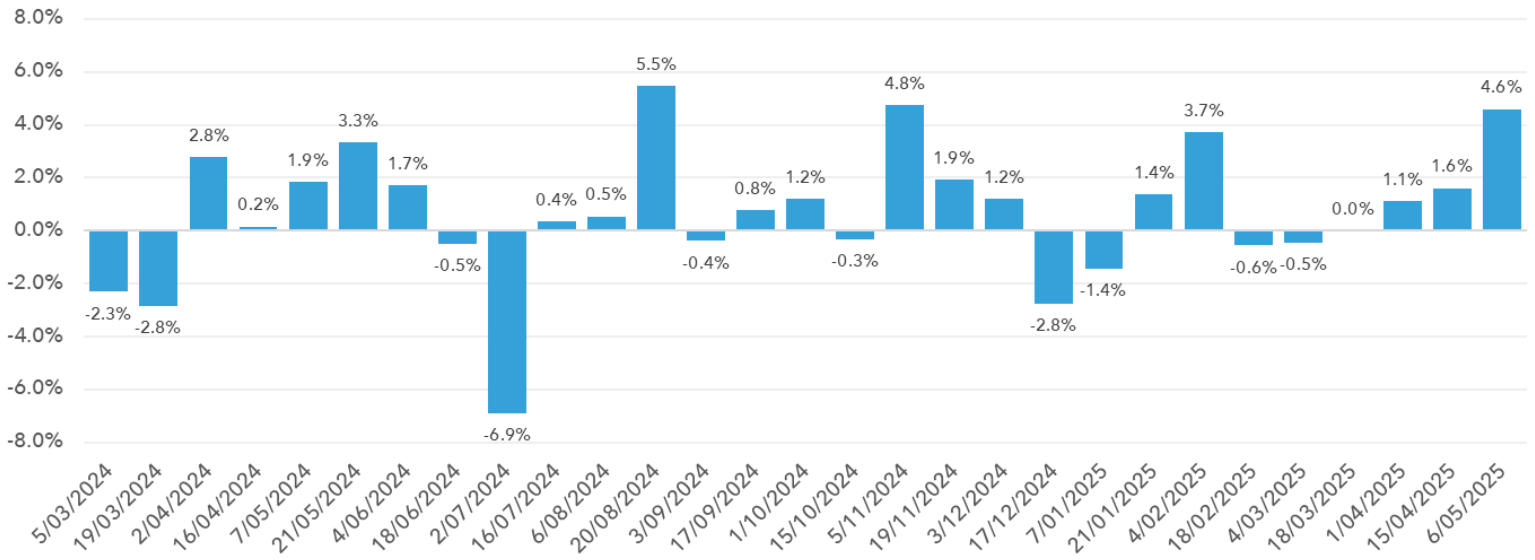


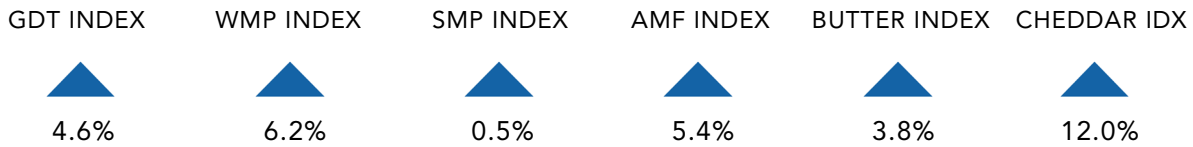
NZX Global Dairy Trade News - Event 379

% Change in GDT Price Index by Event Date



Sources: Global Dairy Trade, NZX

Key Market Indicators



Sources: Global Dairy Trade, NZX

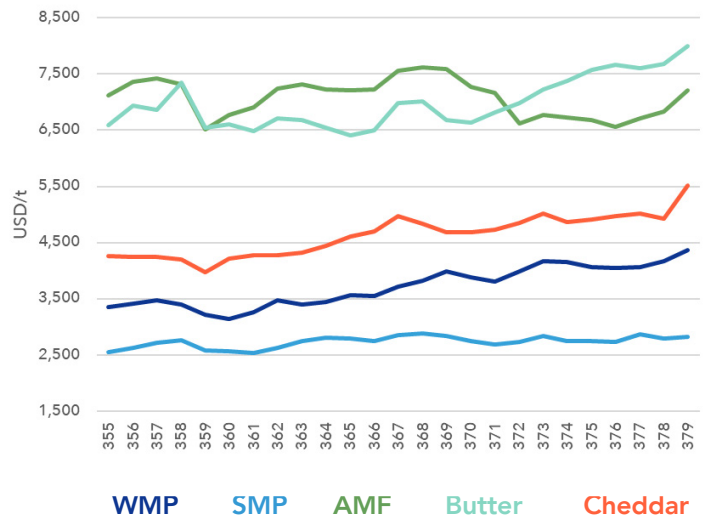
Event 379 Summary

Index Change From Previous Events & Average Price (USD/MT, FAS)
Across All Contracts

| GDT | | WMP | | SMP | |
|--------------|------------|--------------|------------|--------------|------------|
| 4.6% | \$4,516 | 6.2% | \$4,374 | 0.5% | \$2,828 |
| Index Change | Ave. Price | Index Change | Ave. Price | Index Change | Ave. Price |
| AMF | | Butter | | BMP | |
| 5.4% | \$7,212 | 3.8% | \$7,992 | 6.2% | \$3,060 |
| Index Change | Ave. Price | Index Change | Ave. Price | Index Change | Ave. Price |
| Cheddar | | Mozzarella | | Lactose | |
| 12.0% | \$5,519 | -0.3% | \$4,752 | 16.8% | \$1,611 |
| Index Change | Ave. Price | Index Change | Ave. Price | Index Change | Ave. Price |

Sources: Global Dairy Trade, NZX

GDT prices by commodity (USD/t)



Sources: Global Dairy Trade, NZX