

## Points of Interest

- 1 Sales and Lettings Suite
- 2 Peninsula Square
- 3 Design District
- 4 Bureau
- 5 6 Mitre Passage
- 6 The Tide
- 7 Tide Square
- 8 Ravensbourne University
- 9 Upper Riverside
- 10 Outrivals Gym
- 11 Icon Outlet
- 12 Magazine London
- 13 InterContinental Hotel
- 14 Driving Range and Adventure Golf
- 15 Central Park
- 16 Lower Riverside
- 17 The Jetty
- 18 Aperture
- 19 Little Elms Daycare
- 20 St Mary Magdalene C of E
- 21 Coventry University
- 22 Ecology Park
- 23 Greenwich Yacht Club
- 24 Mangal Pharmacy

## Food and Drink

- 25 Greenwich Peninsula Market (weekends)
- 26 Santo
- 27 Greenwich Kitchen
- 28 Coffee Couch
- 29 Canteen
- 30 Manna Eating
- 31 The O2
- 32 Ardoa
- 33 Rico Sabor
- 34 Eatfan
- 35 Tesco Express
- 36 The Joint
- 37 Pilot Pub
- 38 Co-op

## Public Art

- 39 NOW Gallery
- 40 Spire
- 41 Siblings
- 42 Head in the Wind
- 43 The Mermaid
- 44 Quantum Cloud
- 45 OPO by BeBox Meditation Points
- 46 The Diver
- 47 33 by Studio Weave
- 48 Liberty Grip
- 49 Tribe and Tribulation
- 50 A Slice of Reality
- 51 Here
- 52 A Bullet from a Shooting Star
- 53 Hydra and Kali
- 54 Seafood Disco
- 55 A Pinch in Time
- 56 The Optic Cloak

## Getting Around

- 57 North Greenwich Tube
- 58 Bus Station
- 59 Uber Boat by Thames Clippers
- 60 London Cable Car
- 61 Car Park
- 62 Canary Wharf (Elizabeth Line, Jubilee Line, DLR)



# Area Guide

GREENWICH  
PENINSULA

39  
NOW Gallery



NOW Gallery is a public exhibition space for contemporary art, fashion, photography, and design, with an ever-revolving programme of free to attend work from established and emerging artists, designers and other creative practitioners. Providing a place for investigation, NOW Gallery is a space for creatives to develop ideas and unprecedented artwork. It plays an important role of connecting to the locality, introducing interactive pieces of work that invite the public in to engage, contemplate and return, forming a relationship with the surrounding area and helping to shape the Greenwich Peninsula community.

42  
Head in the Wind  
Allen Jones



This site-specific work was commissioned for and inspired by The Tide. Visitors and residents alike are invited to both observe and interact with the vibrant, painted-stel piece from above and below for a different perspective on this huge artwork.

47  
33  
Studio Weave



Come in and explore. Enter a make believe world of large scale murals and a mix of Georgian, Victorian and Tudor architectural styles. Spark your imagination in our artist's folly; lie on the bed, switch on a lamp and find the bike. 33 is split over three spaces, explore ground level murals, first and second floors. Use the stairs to look out over the Design District and Central Park.

3  
Design District



At the heart of Greenwich Peninsula, Design District is London's first permanent, purpose-built hub for the creative industries. Conceived and developed by Knight Dragon, and designed by eight leading architects, Design District houses 16 unique buildings.

Built to provide a space for creatives to work together, Design District currently supports an ecosystem of 1,800 creatives, encompassing individual makers, ambitious start-ups, ground-breaking enterprises and industry leaders.

6  
The Tide



The Tide is a 5KM walkway that will eventually join the seven districts of Greenwich Peninsula, once completed. Designed by Diller Scofidio + Renfro, in collaboration with Neiheiser Agyros, The Tide consists of a network of public spaces and embedded gardens. Providing a new outdoor destination for recreation, culture, and wellness, the first kilometre features a stunning elevated section that allows the visitor a unique riverside view in which to sit, linger and connect. The expansive trail also features a number of public art from some of the world's most renowned artists, including Damien Hirst, Allen Jones and Morag Myerscough.

43  
The Mermaid  
Damien Hirst



## Public Art

56  
The Optic Cloak  
Conrad Shawcross



55  
A Pinch in Time  
Fleatolly Architects



Taking inspiration from its rich and industrial legacy, Fleatolly used circular motifs from the London Underground vent shafts creating a vibrant threshold to The Tide.

16  
Lower Riverside



The first of seven new districts at Greenwich Peninsula, Lower Riverside is designed with community in mind. At its heart is 'Aperture' the village hall, with nursery, gym, multi faith prayer space and meetings rooms. Situated opposite is The Jetty - a riverside oasis with a space for community workshops including yoga, meditation and childrens' music groups.

15  
Central Park



A landscape both urban and natural. Defined by river and vast sky, the Peninsula's public spaces are designed to be enjoyed, connecting people to the great outdoors and to each other. The open spaces of Central Park, equivalent to the size of one and a half football pitches, provide the perfect spot for a relaxing stroll.

9  
Upper Riverside



Introducing a striking new addition to London's iconic skyline, Upper Riverside comprises a family of five waterfront buildings. Sculpted in glass and stone, and interspersed with landscaped walkways, Upper Riverside's distinctive prism-like architecture, with a stepped and angled design, cascades to the edge of the Thames. Together the buildings offer homes with far-reaching river and city views, alongside a series of communal roof gardens and food and drink offerings, to create a new waterside social hub.

53  
Hydra and Kali  
Damien Hirst



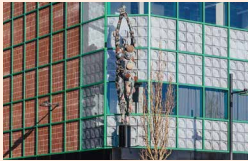
The first sculpture installed here from Hirst's *Treasures from the Wreck of the Unbelievable* exhibition is Hydra & Kali - a 17-foot-high sculpture depicting the Hindu goddess fighting a huge, many-headed serpent.

54  
Seafood Disco  
Studio Morison



Studio Morison have designed a long gently curving 60 seater picnic bench beside the Thames in the shape of a smile. The work began in the studio with a bag of coconuts and the old Tommy Cooper joke, "I went to a seafood disco - and pulled a muscle".

46  
The Diver  
Damien Hirst



*The Diver* is a large-scale bronze sculpture by the British artist Damien Hirst. The two female figures appear like characters from ancient mythology, yet are damaged and covered in corals, having been submerged in the sea for a long time.

1  
Sales & Letting Suite



The Greenwich Peninsula Sales & Lettings Suite is the first step on the journey to making the Peninsula your new home. Immerse yourself in the masterplan of the Peninsula upon entry, before meeting our Sales & Lettings teams who are

on hand to offer expert advice and guidance. Visit the beautifully crafted Show Apartment on the top floor to see the detailed quality of the finishes at Greenwich Peninsula and to take in the incredible views from the wraparound terrace.

22  
Ecology Park



The Greenwich Peninsula Ecology Park is made up of four acres of freshwater habitat and is home to a fascinating array of wildlife. Since 2002 the Ecology Park has been open to the public and has rapidly become an established and bio-diverse urban wetland. The tranquil park is a stunning natural area for people to discover and enjoy in the heart of Greenwich.

12  
Magazine London



Magazine London is a state-of-the-art venue that can flex to meet your most ambitious ideas. At over 3,000 square metres, the site is one of the largest purpose-built hybrid space in London, with four distinctive internal spaces and a riverside Showground. At 9,700 square metres, The Showground has an outdoor capacity of up to 7,000 people and uninterrupted views of the city skyline.

29  
Canteen



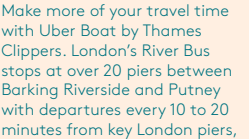
Canteen at Design District is an exciting street food hub located on Greenwich Peninsula, at the heart of London's new community of creatives. The futuristic design houses six imaginative food vendors, serving vibrant food from around the world, alongside a fully-stocked bar for drinks including craft beers, natural wines, spirits and specially crafted cocktails. The cloudlike structure is designed to blur the boundaries between inside and outdoors with a stunning tree canopy for people to dine beneath, bathed in natural light.

32  
Ardoa



Ardoa is a Spanish kitchen and wine bar that uses only the finest and freshest ingredients. All of their plates are inspired by traditional Basque cuisine done the Ardoa way. Every plate is designed to share at the table, because all the best things in life should be shared with the ones you love; whether it's good food, great wine or happy memories.

59  
Uber Boat by Thames Clippers



Make more of your travel time with Uber Boat by Thames Clippers. London's River Bus stops at over 20 piers between Barking Riverside and Putney with departures every 10 to 20 minutes from key London piers,

4  
Bureau



Bureau provides coworking at the heart of London's Design District. Bureau offers flexible, design-centric workspaces, allowing members to develop their careers surrounded by like-minded individuals. With scalable memberships and business support, everything Bureau does is centred around helping individuals and businesses thrive.

14  
Driving Range and  
Adventure Golf



The Greenwich Peninsula Driving Range is a state-of-the-art 60 bay golf and leisure facility, uniquely positioned as the only golf range in central London. With over 300 yards of river frontage, the range provides all round enjoyment, featuring both an excellent restaurant, The Joint, and a fully stocked branch of number one golf retailer, American Golf.

18  
Aperture



Playgrounds, places of worship and a village hall - a new London needs places to connect. From the tiny villages to large cities, there's always a communal hub in any community where people get together to eat, rest and get active. Aperture is the Peninsula's version of the village hall, bolstered by state-of-the-art design and facilities. Literally meaning 'a space for light to pass through', Aperture is bright, open, and welcoming. It's made up of shared spaces for the community - young and old - including a gym, multi faith prayer space, and nursery.

## Food & Drink

27  
Greenwich Kitchen Bar & Grill



GK Bar & Grill has a menu that focuses on simple, quality ingredients that speak for themselves. They have a passion for wine, as well as craft ales on tap and superb cocktails.

25  
Greenwich Peninsula Market



The Greenwich Peninsula Market is a platform showcasing and supporting top independent food producers and makers. The market runs every Saturday and Sunday in Peninsula Square. From, farmhouse cheeses, sweets and desserts, to all things handmade from ceramics to jewellery, fashion to bespoke self-care products, the market will offer visitors the opportunity to buy direct from a curated mix of artisan food traders and designer-makers for the perfect weekend destination.

33  
Rico Sabor

Experience the taste of Spain and South America at Rico Sabor. Visit for something truly unique representing the best gastronomy, wines, cocktails and atmosphere from this diverse cultural mix.



26  
Santo



Santo is an all-day dining, Italian inspired cafe & bar. Enjoy handmade wood fired pizza, pasta dishes, coffee, negroni or wine. Situated in the heart of Peninsula Square, perch yourself on the terrace and watch the world of Greenwich pass you by.

Greenwich Peninsula is fast becoming the capital's most boldly modern landscape. With over 17,000 new homes, 13,000 new jobs and 48 acres of open public space emerging over the coming years. Here a community of thousands live in new riverside homes, work in a cutting-edge Design District, and enjoy The Tide, the neighbourhood's riverside garden walkway and public art trail that celebrates art, design, and wellbeing - all wrapped by the river Thames.

This is new London:  
a destination for modern urban living.

## Getting Around



making it easy for you to move across the capital. On board you will find a café bar, comfortable seats and big windows to enjoy London's skyline as you sail past.



Scan here to find out what's coming up at Greenwich Peninsula

#GREENWICHPENINSULA  
@GREENWICH.PENINSULA