



flow, stop and go®



# PERLATOR® COIN SLOT AERATORS

## All sizes, aerated stream

### Models with restrictor

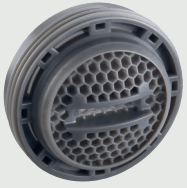
Color code	Flow rate	Male 13/16"-27 UNS-2A (JR)	Male 15/16"-27 UNS-2A (STD)	M24x1 (STD)
	Z 7.5 -9.0 l/min at 3 bar			<u>452002000</u>
	A 13.5 - 15.0 l/min at 3 bar			<u>452003000</u>
	B 22.8 - 25.2 l/min at 3 bar			<u>452005000</u>
	C 27.0 - 30.0 l/min at 3 bar			<u>452006000</u>
	V optimal performance and aeration from 0.2 to 1 bar	<u>453030220</u>	<u>453030050</u>	<u>453030000</u>

### PCA® models

Color code	Flow rate	Male 13/16"-27 UNS-2A (JR)	Male 15/16"-27 UNS-2A (STD)	M24x1 (STD)
	1.0 gpm max.	<u>452058220</u>	<u>452058050</u>	<u>452058000</u>
	1.2 gpm max.	<u>452060220</u>	<u>452060050</u>	<u>452060000</u>
	5.0 l/min			<u>452051000</u>
	1.5 gpm max.	<u>452056220</u>	<u>452056050</u>	<u>452056000</u>
	1.75 gpm max.	<u>452061220</u>	<u>452061050</u>	<u>452061000</u>
	7.0 l/min			<u>452055000</u>
	2.0 gpm max.		<u>452057050</u>	<u>452057000</u>
	2.2 gpm max.	<u>452053220</u>	<u>452053050</u>	<u>452053000</u>
	8.0 l/min			<u>452054000</u>








flow, stop and go®



# PERLATOR® COIN SLOT AERATORS

## All sizes, aerated stream

### PCA® Dual Core (DC) models

Color code	Flow rate	Male 15/16"-27 UNS-2A (STD)	M24x1 (STD)
	1.0 gpm max.	<a href="#">452013050</a>	<a href="#">452013000</a>
	1.2 gpm max.	<a href="#">452014050</a>	<a href="#">452014000</a>
	1.5 gpm max.	<a href="#">452015050</a>	<a href="#">452015000</a>
	1.75 gpm max.	<a href="#">452017050</a>	<a href="#">452017000</a>
	2.1 gpm max.	<a href="#">452016050</a>	<a href="#">452016000</a>