



flow, stop and go®



PERLATOR® COIN SLOT AERATORS

All sizes, aerated stream

Models with restrictor

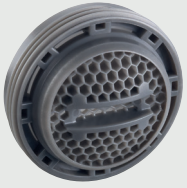
| Color code | Flow rate | Male 13/16"-27 UNS-2A (JR) | Male 15/16"-27 UNS-2A (STD) | M24x1 (STD) |
|------------|--|-------------------------------|--------------------------------|------------------|
| | Z 7.5 -9.0 l/min at 3 bar | | | <u>452002000</u> |
| | A 13.5 - 15.0 l/min at 3 bar | | | <u>452003000</u> |
| | B 22.8 - 25.2 l/min at 3 bar | | | <u>452005000</u> |
| | C 27.0 - 30.0 l/min at 3 bar | | | <u>452006000</u> |
| | V optimal performance and aeration from 0.2 to 1 bar | <u>453030220</u> | <u>453030050</u> | <u>453030000</u> |

PCA® models

| Color code | Flow rate | Male 13/16"-27 UNS-2A (JR) | Male 15/16"-27 UNS-2A (STD) | M24x1 (STD) |
|------------|---------------|-------------------------------|--------------------------------|------------------|
| | 1.0 gpm max. | <u>452058220</u> | <u>452058050</u> | <u>452058000</u> |
| | 1.2 gpm max. | <u>452060220</u> | <u>452060050</u> | <u>452060000</u> |
| | 5.0 l/min | | | <u>452051000</u> |
| | 1.5 gpm max. | <u>452056220</u> | <u>452056050</u> | <u>452056000</u> |
| | 1.75 gpm max. | <u>452061220</u> | <u>452061050</u> | <u>452061000</u> |
| | 7.0 l/min | | | <u>452055000</u> |
| | 2.0 gpm max. | | <u>452057050</u> | <u>452057000</u> |
| | 2.2 gpm max. | <u>452053220</u> | <u>452053050</u> | <u>452053000</u> |
| | 8.0 l/min | | | <u>452054000</u> |








flow, stop and go®



PERLATOR® COIN SLOT AERATORS

All sizes, aerated stream

PCA® Dual Core (DC) models

| Color code | Flow rate | Male 15/16"-27 UNS-2A (STD) | M24x1 (STD) |
|--|---------------|--------------------------------|---------------------------|
|  | 1.0 gpm max. | 452013050 | 452013000 |
|  | 1.2 gpm max. | 452014050 | 452014000 |
|  | 1.5 gpm max. | 452015050 | 452015000 |
|  | 1.75 gpm max. | 452017050 | 452017000 |
|  | 2.1 gpm max. | 452016050 | 452016000 |