




















# CACHÉ® PL HC AERATORS

## All sizes, aerated stream

### Models with restrictor

Color code	Flow rate	M16.5×1 (TT)	M18.5×1 (TJ)	M21.5×1 (JR)	M24×1 (STD)
	Z 7.5 - 9.0 l/min at 3 bar		<a href="#">432202010</a>	<a href="#">422202010</a>	<a href="#">402202010</a>
	A 13.5 - 15.0 l/min at 3 bar		<a href="#">432203010</a>	<a href="#">422203010</a>	<a href="#">402203010</a>
	S 18.0 - 19.8 l/min at 3 bar				<a href="#">402204010</a>
	B 22.8 - 25.2 l/min at 3 bar		<a href="#">432205010</a>	<a href="#">422205010</a>	<a href="#">402205010</a>
	C 27.0 - 30.0 l/min at 3 bar				<a href="#">402206010</a>
	D 34.8 - 37.8 l/min at 3 bar				<a href="#">402207010</a>
	1.0 gpm max at 60 psi	<a href="#">443231010</a>			<a href="#">403231010</a>
	T 1.5 gpm max at 60 psi	<a href="#">443232010</a>			<a href="#">402210010</a>
	1.75 gpm max. at 60 psi	<a href="#">443239010</a>			<a href="#">403239010</a>
	2.0 gpm max. at 60 psi	<a href="#">443233010</a>			<a href="#">403233010</a>
	X 2.2 gpm max at 60 psi	<a href="#">443234010</a>	<a href="#">432201010</a>	<a href="#">422201010</a>	<a href="#">402201010</a>
	3.0 gpm max. at 60 psi				<a href="#">403235010</a>
	3.5 gpm max. at 60 psi				<a href="#">403236010</a>
	W 4.0 gpm max. at 60 psi // 7.3 l/min at 1 bar				<a href="#">403237010</a>
	Y 4.5 gpm max. at 60 psi // 8.0 l/min at 1 bar				<a href="#">403238010</a>
	Q optimal performance and aeration from 0.1 to 0.6 bar		<a href="#">432275010</a>	<a href="#">422275010</a>	
	V optimal performance and aeration from 0.2 to 1 bar	<a href="#">443230010</a>	<a href="#">433230010</a>	<a href="#">423230010</a>	<a href="#">403230010</a>



flow, stop and go®



# CACHÉ® PL HC AERATORS

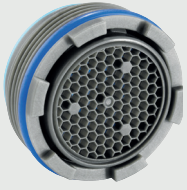
## All sizes, aerated stream

### PCA® models

Color code	Flow rate	M16.5×1 (TT)	M18.5×1 (TJ)	M21.5×1 (JR)	M24×1 (STD)
	0.5 gpm max.		<a href="#">432259010</a>	<a href="#">422259010</a>	
	1.0 gpm max.	<a href="#">443258010</a>	<a href="#">432258010</a>	<a href="#">422258010</a>	<a href="#">402258010</a>
	1.2 gpm max.	<a href="#">443260010</a>	<a href="#">432260010</a>	<a href="#">422260010</a>	<a href="#">402260010</a>
	5.0 l/min	<a href="#">443251010</a>	<a href="#">432251010</a>	<a href="#">422251010</a>	<a href="#">402251010</a>
	1.5 gpm max.	<a href="#">443256010</a>	<a href="#">432256010</a>	<a href="#">422256010</a>	<a href="#">402256010</a>
	6.0 l/min				<a href="#">402252010</a>
	1.75 gpm max.	<a href="#">443261010</a>	<a href="#">432261010</a>	<a href="#">422261010</a>	<a href="#">402261010</a>
	7.0 l/min	<a href="#">443255010</a>	<a href="#">432255010</a>	<a href="#">422255010</a>	<a href="#">402255010</a>
	2.0 gpm max.	<a href="#">443257010</a>	<a href="#">432257010</a>	<a href="#">422257010</a>	<a href="#">402257010</a>
	2.2 gpm max.	<a href="#">443253010</a>	<a href="#">432253010</a>	<a href="#">422253010</a>	<a href="#">402253010</a>
	8.0 l/min	<a href="#">443254010</a>	<a href="#">432254010</a>	<a href="#">422254010</a>	<a href="#">402254010</a>








flow, stop and go®



# CACHÉ® PL HC AERATORS

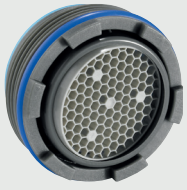
## All sizes, aerated stream

### PCA® Dual Core (DC) models

Color code	Flow rate	M18.5×1 (TJ)	M21.5×1 (JR)	M24×1 (STD)
	1.0 gpm max.	<a href="#"><u>433213010</u></a>	<a href="#"><u>423213010</u></a>	<a href="#"><u>402213010</u></a>
	1.2 gpm max.	<a href="#"><u>433214010</u></a>	<a href="#"><u>423214010</u></a>	<a href="#"><u>402214010</u></a>
	1.5 gpm max.	<a href="#"><u>433215010</u></a>	<a href="#"><u>423215010</u></a>	<a href="#"><u>402215010</u></a>
	1.75 gpm max.	<a href="#"><u>433217010</u></a>	<a href="#"><u>423217010</u></a>	<a href="#"><u>402217010</u></a>
	2.1 gpm max.	<a href="#"><u>433216010</u></a>	<a href="#"><u>423216010</u></a>	<a href="#"><u>402216010</u></a>



flow, stop and go®



# CACHÉ® PL HC SSR AERATORS

## All sizes, aerated stream

### Models with restrictor

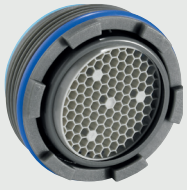
Color code	Flow rate	M18.5×1 (TJ)	M21.5×1 (JR)	M24×1 (STD)
	Z 7.5 -9.0 l/min at 3 bar	<a href="#">436202010</a>	<a href="#">426202010</a>	<a href="#">406202010</a>
	A 13.5 - 15.0 l/min at 3 bar	<a href="#">436203010</a>	<a href="#">426203010</a>	<a href="#">406203010</a>
	S 18.0 - 19.8 l/min at 3 bar			<a href="#">406204010</a>
	B 22.8 - 25.2 l/min at 3 bar	<a href="#">436205010</a>	<a href="#">426205010</a>	<a href="#">406205010</a>
	C 27.0 - 30.0 l/min at 3 bar			<a href="#">406206010</a>
	D 34.8 - 37.8 l/min at 3 bar			<a href="#">406207010</a>
	X 2.2 gpm max at 60 psi	<a href="#">436201010</a>	<a href="#">426201010</a>	<a href="#">406201010</a>

### PCA® models

Color code	Flow rate	M18.5×1 (TJ)	M21.5×1 (JR)	M24×1 (STD)
	5.0 l/min	<a href="#">436251010</a>	<a href="#">426251010</a>	<a href="#">406251010</a>
	1.5 gpm max.	<a href="#">436256010</a>	<a href="#">426256010</a>	<a href="#">406256010</a>
	1.75 gpm max.	<a href="#">436261010</a>	<a href="#">426261010</a>	<a href="#">406261010</a>
	7.0 l/min	<a href="#">436255010</a>	<a href="#">426255010</a>	<a href="#">406255010</a>
	2.0 gpm max.	<a href="#">436257010</a>	<a href="#">426257010</a>	<a href="#">406257010</a>
	2.2 gpm max.	<a href="#">436253010</a>	<a href="#">426253010</a>	<a href="#">406253010</a>
	8.0 l/min	<a href="#">436254010</a>	<a href="#">426254010</a>	<a href="#">406254010</a>








flow, stop and go®



# CACHÉ® PL HC SSR AERATORS

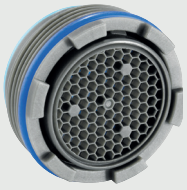
## All sizes, aerated stream

### PCA® Dual Core (DC) models

Color code	Flow rate	M18.5×1 (TJ)	M21.5×1 (JR)	M24×1 (STD)
	1.0 gpm max.	<a href="#"><u>436213010</u></a>	<a href="#"><u>426213010</u></a>	<a href="#"><u>406213010</u></a>
	1.2 gpm max.	<a href="#"><u>436214010</u></a>	<a href="#"><u>426214010</u></a>	<a href="#"><u>406214010</u></a>
	1.5 gpm max.	<a href="#"><u>436215010</u></a>	<a href="#"><u>426215010</u></a>	<a href="#"><u>406215010</u></a>
	1.75 gpm max.	<a href="#"><u>436217010</u></a>	<a href="#"><u>426217010</u></a>	<a href="#"><u>406217010</u></a>
	2.1 gpm max.	<a href="#"><u>436216010</u></a>	<a href="#"><u>426216010</u></a>	<a href="#"><u>406216010</u></a>



flow, stop and go®



# CACHÉ® PL HC AERATORS

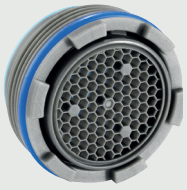
## All sizes, laminar stream

### PCA® models

Color code	Flow rate	M16.5×1 (TT)	M18.5×1 (TJ)	M21.5×1 (JR)	M24×1 (STD)
	0.5 gpm max.	<a href="#">443359010</a>			<a href="#">402359010</a>
	1.0 gpm max.	<a href="#">443358010</a>	<a href="#">432358010</a>	<a href="#">422358010</a>	<a href="#">402358010</a>
	1.2 gpm max.	<a href="#">443360010</a>	<a href="#">432360010</a>	<a href="#">422360010</a>	<a href="#">402360010</a>
	5.0 l/min	<a href="#">443351010</a>	<a href="#">432351010</a>	<a href="#">422351010</a>	<a href="#">402351010</a>
	1.5 gpm max.	<a href="#">443356010</a>	<a href="#">432356010</a>	<a href="#">422356010</a>	<a href="#">402356010</a>
	6.0 l/min				<a href="#">402352010</a>
	1.75 gpm max.	<a href="#">443361010</a>	<a href="#">432361010</a>	<a href="#">422361010</a>	<a href="#">402361010</a>
	7.0 l/min	<a href="#">443355010</a>	<a href="#">432355010</a>	<a href="#">422355010</a>	<a href="#">402355010</a>
	2.0 gpm max.	<a href="#">443357010</a>	<a href="#">432357010</a>	<a href="#">422357010</a>	<a href="#">402357010</a>
	2.2 gpm max.	<a href="#">443353010</a>	<a href="#">432353010</a>	<a href="#">422353010</a>	<a href="#">402353010</a>
	8.0 l/min	<a href="#">443354010</a>	<a href="#">432354010</a>	<a href="#">422354010</a>	<a href="#">402354010</a>













flow, stop and go®



# CACHÉ® PL HC AERATORS

## All sizes, laminar stream

### Models with restrictor

Color code	Flow rate	M16.5×1 (TT)	M18.5×1 (TJ)	M21.5×1 (JR)	M24×1 (STD)
	Z 7.5 - 9.0 l/min at 3 bar		<a href="#">432302010</a>		<a href="#">402302010</a>
	A 13.5 - 15.0 l/min at 3 bar		<a href="#">432303010</a>		<a href="#">402303010</a>
	S 18.0 - 19.8 l/min at 3 bar				<a href="#">402304010</a>
	B 22.8 - 25.2 l/min at 3 bar		<a href="#">432305010</a>		<a href="#">402305010</a>
	C 27.0 - 30.0 l/min at 3 bar				<a href="#">402306010</a>
	D 34.8 - 37.8 l/min at 3 bar				<a href="#">402307010</a>
	1.0 gpm max at 60 psi	<a href="#">443331010</a>			
	T 1.5 gpm max at 60 psi	<a href="#">443332010</a>	<a href="#">433332010</a>	<a href="#">423332010</a>	<a href="#">402310010</a>
	X 2.2 gpm max at 60 psi	<a href="#">443334010</a>	<a href="#">433334010</a>	<a href="#">423334010</a>	<a href="#">402301010</a>
	V optimal performance from 0.2 to 1 bar	<a href="#">443330010</a>	<a href="#">433330010</a>	<a href="#">423330010</a>	