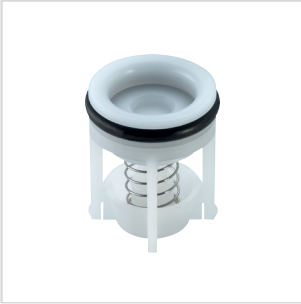




flow, stop and go®



OD-TYPE CHECK VALVES

Features: improved flow, no additional axial retention necessary

- Nominal size: 8 - 13 mm
- Installation: in or against direction of flow
- Design: open version, with retaining tabs

designation	flow range (l/min)	flow range (gpm)	part number	bore diameter
OD8/DN6	1.8 - 7.2	0.5 - 1.9	<u>314201000</u>	8.1 mm
OD13/DN10	1.8 - 24.0	0.5 - 6.3	<u>314264000</u>	13.1 mm

For high tech and hot water applications (-HT):

designation	flow range (l/min)	flow range (gpm)	part number	bore diameter
OD13/DN10-HT	1.5 - 25.2	0.4 - 6.7	<u>314335000</u>	13.1 mm