

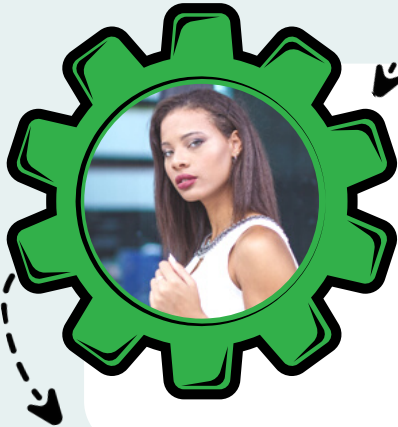


NATIONAL ENGINEERS WEEK 2022

Biomedical Engineering



Learn more about Biomedical Engineering and how female engineers impact our world. [START EXPLORING HERE!](#)



MEET AN INDUSTRY EXPERT

RHYISA ARMBRISTER

Biochemist >> Florida International University (FIU)

Hialeah Gardens High School, Miami-Dade, FL

Click on the [green gear](#) to view Rhyisa's video to learn more about the biomedical career field. She is a part of the Translational Glycobiology Institute at FIU. Her research focuses on developing a human antibody that can target a tumor glycan which is overexpressed in ovarian cancer, lung cancer, and glioblastoma.



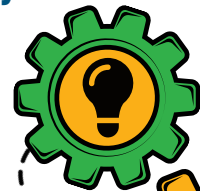
STRETCH YOUR LEARNING



[View NAF's Engineers Week playlist](#)

EXPAND your engineering knowledge and capacity:

- Check out [virus wars](#) and make a model of an [adenovirus \(common cold virus\)](#).
- View and subscribe to [The BME Life](#), a channel dedicated to rising biomed engineers
- Create a video for the [3M Young Scientist Challenge Video Contest!](#)
- Complete the Innovation Challenge below. ↓



COMPLETE THE CHALLENGE TO WIN

SHARE FOR A CHANCE TO WIN \$100

Before 3/31/22, share the URL of your completed project presentation [HERE!](#)

SHOWCASE YOUR PROJECT

Check out NAF's Showcase Choice Board on the next page for presentation ideas.

ACCEPT THE INNOVATION CHALLENGE

Deepen your learning by innovating for a project solution. Check out the challenge details on the next page.



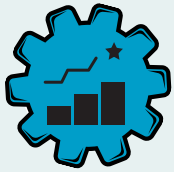
IMPACT SURVEY FOR EDUCATORS: Scan or click the QR code to share your feedback and for a chance to win \$100.





NATIONAL ENGINEERS WEEK 2022

Innovation Challenge: Biomedical Engineering



ACCEPT THE INNOVATION CHALLENGE

Complete one of the following projects from DiscoverE.org: 1) [Heart valve replacement](#), 2) [Nanomedicine](#) (anti-cancer medicine), or 3) [Space Fitness](#). Another option is to [design a mechanical prosthesis](#) (e.g., a swimming arm by analyzing flow and forces) in [Solidworks](#) or a similar design platform.

SHOWCASE YOUR CHALLENGE PROJECT

Bring your project to life by sharing your learning with a global audience! Present your learning journey using the Showcase Choice Board below. Then, generate a URL to share with your class, a mentor, an industry partner, and NAF!



Choice 1: Create a YouTube video to detail your learning through the project challenge.

Choice 2: Create a [blog](#) or [social media campaign](#) to highlight your project and learning journey.

Choice 3: Create a career-readiness digital portfolio to showcase your project and learning journey using [Bulb](#) or [Google Slides](#).

Choice 4: Code or create a simple webpage to showcase your project. Consider [Replit](#) or [Wix](#).



Photo Credit: Disney

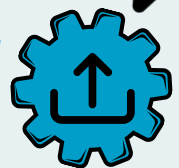
Meet Lanny Smoot, a Walt Disney Imagineer! He has 100 U.S. patents, and is considered "[one of the most prolific Black inventors in American history](#)." He strives to inspire Black youth to chase STEM careers.

Choice 5: Produce a [PechaKucha](#) (a 400-second visual story) to showcase your project and learning journey.

Choice 6: Showcase your project in a format of your choosing.

SHARE THE URL OF YOUR PROJECT SHOWCASE

Scan or click the QR code to complete the submission form and for a chance to win a \$100 gift card for you AND your educator.



For more information, please contact [Christine Rodriguez](#).