



BE FUTURE
READY



ACADEMY OF ENGINEERING



195K
new jobs



\$91K
median annual wage*

NAF APPROACH

NAF's design focuses on connecting the classroom to the workplace by integrating career-focused curricula and authentic-learning projects into the traditional high school experience and offering real-world application opportunities. With a rigorous program of study and a progressive work-based learning continuum of activities designed to build career awareness, exploration, and preparation, students gain the skills and knowledge needed to make informed choices and be successful in their future careers.



learn more at **NAF.ORG**



follow us on      
@NAFCAREERACADS

#BEFUTUREREADY

INDUSTRY NEED

Overall employment in architecture and engineering occupations is projected to grow faster than the average for all occupations from 2023 to 2033. About 195,000 openings are projected each year, on average, in these occupations due to employment growth and the need to replace workers who leave the occupations permanently.

CURRICULUM

NAF's **Future Ready Learning** hosts a wide array of instructional content vetted by industry experts, post-secondary instructors, and professional organizations. NAF endorses engineering curricula by Project Lead the Way (PLTW), Paxton/Patterson, Intelitek, and Siemens. The Academy of Engineering curriculum includes:

- Authentic learning projects called **NAF Expeditions** that address real-world issues in partnership with career experts, including topics on AI, Computer Vision, City Planning, and more.
- On-demand resources from national institutions such as Grow with Google, Infosys, Code.org, CYBER.org, The Coding School, DiscoverE, Invention Convention, and Teach Engineering
- A new instructional unit launching in July 2025, called AI in the Engineering Industry.

WORK-BASED LEARNING

Industry professionals play a significant role in helping students see the connections between high school and the world of work. NAF collaborates with major corporations, post-secondary institutions, and local companies to provide career readiness and work-based learning experiences throughout the academy experience.

Students connect directly with engineering professionals to learn first-hand about careers in this industry and determine how their strengths and interests might be a good fit. Adults act as role models and guides to students, helping them develop the skills they will need to thrive in their future careers, navigate pathways to get there, and help them start building their professional network to open doors of opportunity. Businesses that collaborate with NAF academies play an active and integral role in shaping the future workforce and building their own local talent.



BE FUTURE READY

2024-2025

ACADEMY OF ENGINEERING

DATA AT A GLANCE

12,506
STUDENTS



89
ACADEMIES

19
STATES

47
DISTRICTS

NAF PREPARES STUDENTS TO #BEFUTUREREADY

67%

MALE

30%

FEMALE

3%

REPORTED NEITHER



KNOPRO STATS



14,500
STUDENT
USERS



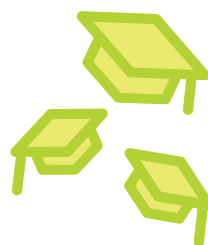
1,832
EDUCATOR
USERS



\$200K
IN PRIZES
AWARDED

TOP PARTICIPANT
LOCATIONS

25% Florida
12% Texas
11% New York
11% North Carolina
7% California



99%

OF SENIORS
GRADUATED



65%

SENIORS FEEL
PREPARED FOR THE
WORKFORCE

higher than the national
average



64%%

GRADUATES JOIN
THE WORKFORCE



87%

GRADUATES ARE
COLLEGE BOUND



learn more at **NAF.ORG**



follow us on      
@NAFCAREERACADS