

HOW TEAMSHIP COUNTS TOWARDS NAFTRACK CERTIFICATION



CollegeBoard

Teamship™

In Teamship, small groups of students come together to collaborate and solve meaningful, real-world problems for businesses and organizations. Teamship includes structured coaching from certified educators trained to guide student teams through challenge and growth. Students also receive feedback from industry professionals at several phases of the Teamship cycle.

CAREER PREPARATION ACTIVITY CRITERIA

To meet the Career Preparation element of NAFTrack Certification, students must complete an internship, clinical experience, pre-apprenticeship/youth apprenticeship, or mentored industry project. This can be one 80-hour experience or two 40-hour experiences. A key component is interactions with an industry professional who is actively involved in shaping the experience, from ideation & development through implementation & outcomes and engages with students on multiple occasions.

How this works for Teamship

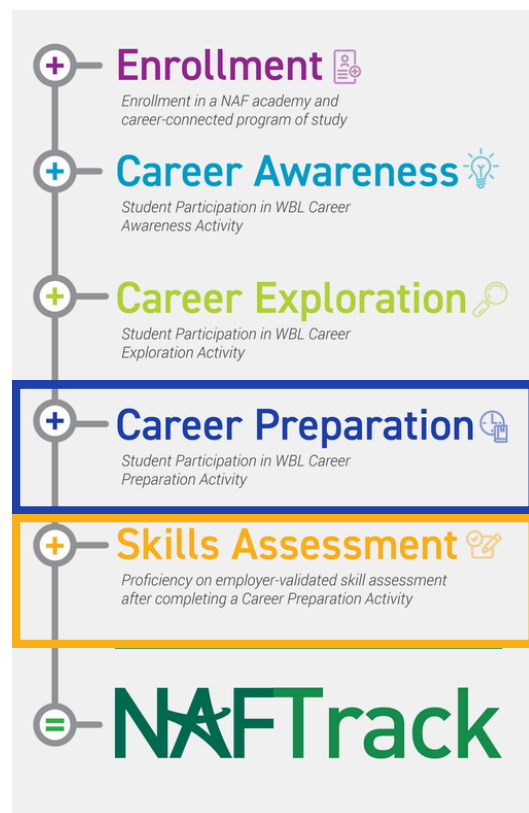
- NAF classifies Teamship as a mentored industry project.
- Since one Teamship cycle is 40 hours, it would fulfill half of the Career Preparation requirement; two cycles would fulfill the full requirement.
- Students work in small groups and receive feedback from industry professionals at specific touchpoints during the cycle and receive ongoing mentorship and supervision from a Teamship coach.

SKILLS ASSESSMENT CRITERIA

To fulfill this element of NAFTrack Certification, the mentor/supervisor of the Career Preparation experience must complete the Future Ready Skills Assessment per individual student(s). They are sent a unique link for each student and complete the assessment online.

How this works for Teamship

- A NAF educator needs to enter the students' Teamship cycle in the NAFTrack Educators system and list the name and contact email for the Teamship coach.
- At the conclusion of the Teamship cycle, the coach will complete the Future Ready Skills Assessment (including Pitch Event written feedback from Teamship business partners via a Teamship-provided template) for each student they worked with.
- Students will be able to view the feedback in their NAFTrack Students account.



Questions?

Consult with your NAF Portfolio Manager and/or your Teamship Lead Consultant (TLC).