



HOW KNOPRO CHALLENGES CAN COUNT TOWARDS NAFTRACK CERTIFICATION

KnoPro [powered by NAF] is a 100% FREE platform for high school students who want to develop in-demand skills by completing real-world projects for cash and other prizes.

KnoPro Challenges are launched ~every 5 weeks. Once winners are named, prize money for the Challenge is given out but the previous Challenges remain live. This provides the opportunity for students to work through the central question and develop their solution.

OPTION 1: Partner Engagement Project

Career Exploration activity

This is the most common way a KnoPro Challenge can count as WBL.

Both of the following criteria must be met:

- 1 ~15-39 hours**
Based on student feedback, they spend ~20 hours over 4-5 weeks.
- 2 Feedback from a mentor**
Students must seek feedback at least once either from the mentoring available through KnoPro or from a mentor outside of KnoPro.

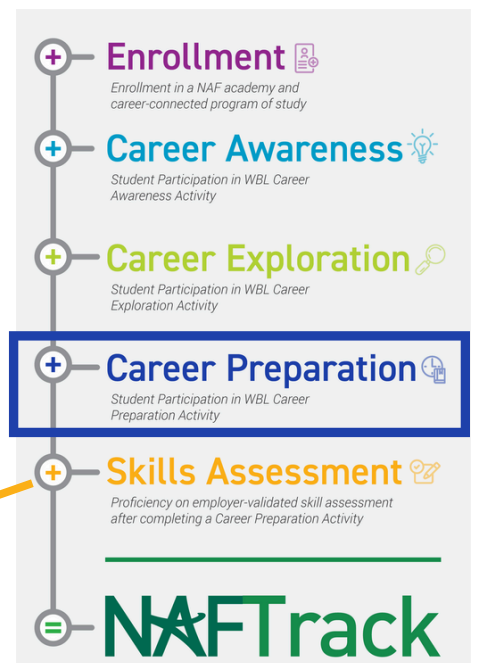
OR

OPTION 2: Mentored Industry Project

Career Preparation activity

All of the following criteria must be met:

- 1 40+ hours**
Students spend a longer period of time both working on the KnoPro Challenge and with a mentor.
- 2 In-depth mentorship**
Students work consistently with a mentor who gets to know them well and provides ongoing feedback during the Challenge.
- 3 Mentor must complete Future Ready Skills Assessment**
At the conclusion of the KnoPro Challenge, the mentor completes an assessment for each student. This includes evaluating the student's development of the 6 Future Ready Skills, any additional skills, and feedback on strengths and areas for growth.



Tracking Student Participation in KnoPro Challenges

To see your students' submissions, you need to create a [KnoPro Educator account](#) and a class code. Students then need to enter this code in their KnoPro Student account. For more information, view the Educator resources once you have created your account and logged in.

Questions?

Have a question about KnoPro? Run into an issue with your account? We're here for you. To request or provide feedback, email us at: support@knopro.org



ENTERING A KNOPRO CHALLENGE IN THE WBL TRACKER

Partner Engagement Project

In most cases, KnoPro Challenges count as Partner Engagement Projects (Career Exploration phase of the WBL continuum). In order for students to receive credit towards NAFTrack Certification, the KnoPro Challenge must be entered in the WBL Tracker.

Log in to the Academy Support Hub (ASH) and navigate to the WBL Tracker. Then, click “Add an Activity.”

General Information

Activity Title

AI for Startups KnoPro Challenge

Add the challenge title, followed by “KnoPro Challenge”

Date Range?

09/26/2025 - 10/31/2025

Date range of the challenge

Days (optional)?

Hours?

20

~ number of hours your students spent (20 is the average)

Where did this activity take place?

Select option

Virtual, hybrid, or in-person

Did Your Advisory Board participate in this activity?

☐ Yes ☐ No

Select “Yes” if any AB members served as mentors for the challenge

Type of Primary Activity with Partners (Select one)

Career Awareness?

☐ Career Fair?

☐ Guest Speaker?

☐ Worksite Tour?

Career Exploration?

☐ Informational Interview?

☐ Job Shadow?

☐ Mentorship?

☐ Mock Interview?

☒ Partner Engagement Project?

☐ Resume Coaching/Review Session?

☐ Skills Workshop?

What secondary activities, if any, took place during this event? (Optional)

Select secondary activities

Do not need to select a secondary activity

Academies that participated

Select at least one academy

Select your academy

(you will only see academies you have access to)

Companies/Persons/Description

Companies/Organizations/Institutions?

KPMG

List the challenge sponsor

Persons Involved (Optional)?

List any external mentors

Description

KnoPro Challenge - Students will develop a product, service, or marketing campaign idea addressing the big question: How can AI help startups work smarter and serve customers better?

Copy and paste from the KnoPro Challenge
(this example is an edited version)

ADD ACTIVITY

After Adding the Activity

You need to designate the students who participated in the KnoPro Challenge.

Review the list in your Educator Dashboard in KnoPro, then check off those students in the WBL Tracker.

Questions?

If you need assistance, email us at: support@knopro.org