



BE FUTURE
READY



ACADEMY OF HEALTH SCIENCES



670K
new jobs



\$81K
median annual wage*

NAF APPROACH

NAF's design focuses on connecting the classroom to the workplace by integrating career-focused curricula and authentic-learning projects into the traditional high school experience and offering real-world application opportunities. With a rigorous program of study and a progressive work-based learning continuum of activities designed to build career awareness, exploration, and preparation, students gain the skills and knowledge needed to make informed choices and be successful in their future careers.



learn more at **NAF.ORG**



follow us on      
@NAFCAREERACADS

#BEFUTUREREADY

INDUSTRY NEED

Overall employment in healthcare occupations is projected to grow much faster than the average for all occupations from 2023 to 2033. About 670,000 openings are projected each year, on average, in these occupations due to employment growth and the need to replace workers who leave the occupations permanently.

CURRICULUM

NAF's **Future Ready Learning** hosts a wide array of instructional content vetted by industry experts, post-secondary instructors, and professional organizations. In addition to our own health science courses, we also endorse curriculum by Project Lead the Way (PLTW).

The Academy of Health Sciences curriculum includes

- Courses in anatomy and physiology, biotechnology, global health, and health careers, as well as
- New instructional units on Exploring Oral Health and AI in the Health Science Industry (launching in July 2025).
- Authentic learning projects called **NAF Expeditions** that address real-world issues in partnership with career experts, like Navigating a Career in Medicine and Sports Data Analytics.
- On-demand resources from PLTW, Harvard LabXchange, AAMC, and California Educators Together

Essential organizations supporting the NAF Academy of Health Sciences curriculum include Delta Dental, PLTW, Harvard LabXchange (LXC), National Consortium for Health Science Education (NCHSE), HOSA - Future Health Professionals, AAMC, and Grow with Google.

WORK-BASED LEARNING

Industry professionals play a significant role in helping students see the connections between high school and the world of work. NAF collaborates with major corporations, post-secondary institutions, and local companies to provide career readiness and workbased learning experiences throughout the academy experience.

Students connect directly with health sciences professionals to learn first-hand about careers in this industry and determine how their strengths and interests might be a good fit. Adults act as role models and guides to students, helping them develop the skills they will need to thrive in their future careers, navigate pathways to get there, and help them start building their professional network to open doors of opportunity. Businesses that collaborate with NAF academies play an active and integral role in shaping the future workforce and building their own local talent.

*The Bureau of Labor Statistics



BE FUTURE READY

2024-2025

ACADEMY OF HEALTH SCIENCES



98
ACADEMIES

DATA AT A GLANCE

17,735
STUDENTS

20
STATES

54
DISTRICTS

NAF PREPARES STUDENTS TO #BEFUTUREREADY

This data is academy-reported.

67%

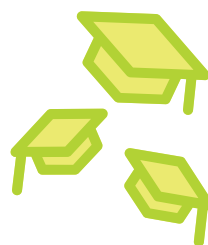
MALE

29%

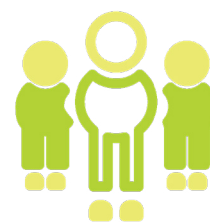
FEMALE

4%

REPORTED NEITHER



99%
OF SENIORS
GRADUATED



65%
SENIORS FEEL
PREPARED FOR THE
WORKFORCE

higher than the national
average

KNOPRO STATS



14,500
STUDENT
USERS



1,832
EDUCATOR
USERS



\$200K
IN PRIZES
AWARDED

TOP PARTICIPANT
LOCATIONS

25% **Florida**
12% **Texas**
11% **New York**
11% **North Carolina**
7% **California**



62%%
GRADUATES JOIN
THE WORKFORCE



93%
GRADUATES ARE
COLLEGE BOUND



learn more at **NAF.ORG**



follow us on      
@NAFCAREERACADS