

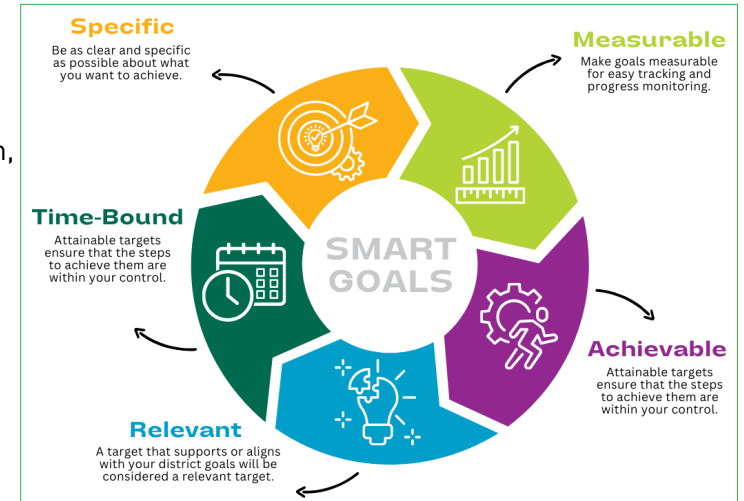
# Action Plan

## Academy Quality

The academy action plan sets clear goals and strategic actions aligned with the NAF Design, ensuring continuous improvement in program quality and maximizing student impact. Use SMART goals for effective planning.

- Regularly review progress against target dates.
- Adjust plans based on feedback and outcomes.
- Maintain clear and open communication among all stakeholders.
- Monitor goals in [ASH](#) for support resources and coordination with NAF.

Academy Name: \_\_\_\_\_



NAF Design Elements	Goals & Next Steps	Person Responsible	Target Date	Evidence of Success	Notes
Academy Development & Structure					
Advisory Board					
Program of Study					
Work-Based Learning					

# SMART Goals

## for Action Planning



**Action Planning Tip:** When setting goals, follow the SMART structure. Use the questions below to create your goals.

S	SPECIFIC	<p>A. What exactly do you want to achieve?</p> <p>B. Who is involved or responsible?</p> <p>D. Why is this goal important?</p>	
M	MEASURABLE	<p>A. How will you track progress?</p> <p>B. What are the key performance indicators (KPIs)?</p> <p>C. How will you know when the goal is accomplished?</p>	
A	ACHIEVABLE	<p>A. Is the goal realistic given your resources and constraints?</p> <p>B. What steps or actions will you take to reach the goal?</p> <p>C. Do you have the necessary skills and support?</p>	
R	RELEVANT	<p>A. Does the goal align with your district objectives?</p> <p>B. Will it contribute to long-term success and growth?</p> <p>C. Is now the right time to pursue this goal?</p>	
T	TIME-BOUND	<p>A. When will you start working on the goal?</p> <p>B. What is the target completion date?</p> <p>C. Are there any milestones or checkpoints?</p>	