

# REMOTE FLEET VISION

## PRODUCT INFO

Cat® Remote Fleet Vision (RFV) is a remote monitoring solution that helps you to locate, track and manage all your assets with just a few clicks. The Cat® (RFV) collects data from hardware that may already be integrated into your assets, then serves that information up to you through an easy-to-use web interface. Instead of guessing where your assets are, what they're doing and how they're performing, you'll know. That means you can work more efficiently and lower your operating costs.

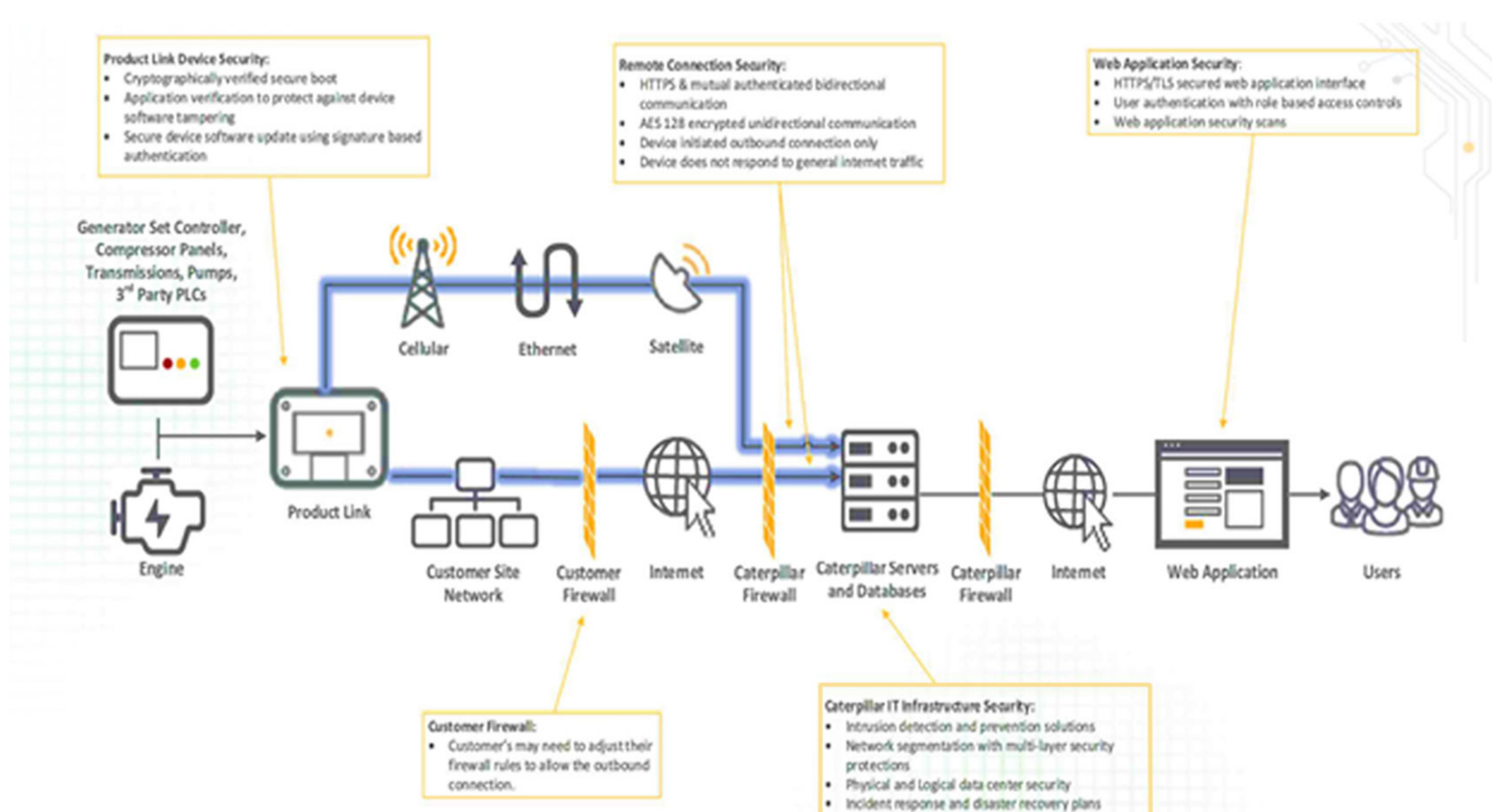
## BENEFITS

- ✓ Maximize Skillsets of Workforce
- ✓ Reduce Operating Costs
- ✓ Monitor All Equipment and Manufacturers
- ✓ Improve Efficiency

## HOW DOES CAT RFV WORKS?

The CAT® RFV collects data from hardware integrated into your assets, then serves that information up to you through an easy-to-use web interface. You can monitor all the data including engine operational hours, fuel consumption, load profile and alarms from any PC, laptop or tablet at your ease.

## DATA TRANSMISSION FLOW

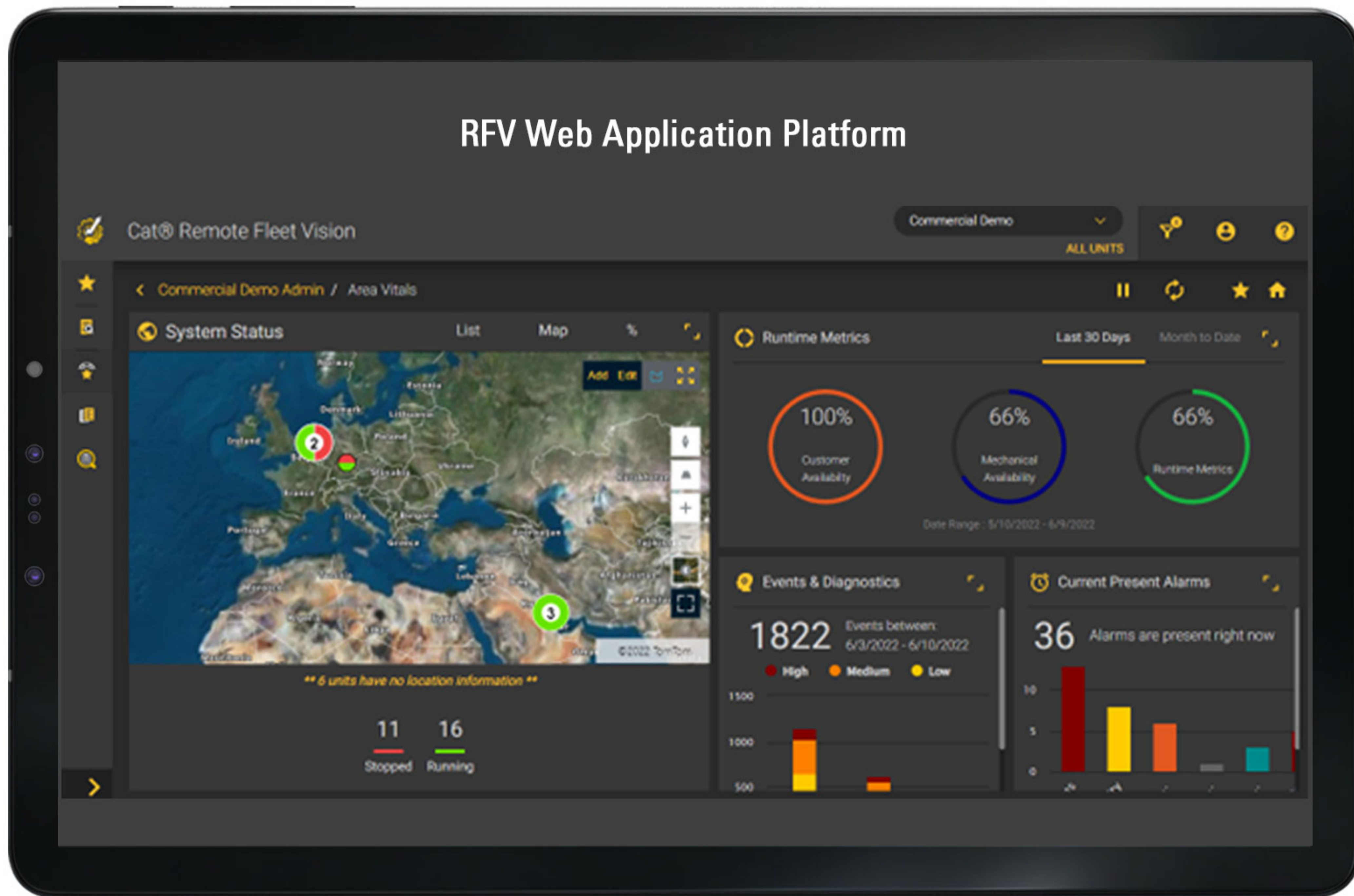




# DEVICE OPTIONS

- + PLE602P Network Manager
- + PLE083 Radio
- + Communications Method  
(Ship network, Cell, Satellite) \*
- + Harness, Wiring and Cable

\*\* device selection and installation topology will be determined after ship survey exercise.



## MARKETING PACKAGES

### Engine Monitoring System

- + RFV devices (Network Manager, Radio, Asset IQ, etc)
- + Comes with CAT® Customer Value Agreement (CVA)\*\*
- + Waiver on the subscription fees up to 24 months
- + Complimentary one time Condition Monitoring training
- + Complimentary free ship survey.

Price starting from **RM33,900** per engine

\*final price will be quoted upon ship survey.

Sime Darby Industrial Sdn. Bhd. 198001005436 (59220-K)

Email : [sdi.care@simedarby.com](mailto:sdi.care@simedarby.com)

Facebook : [@tractorsmalaysia](https://www.facebook.com/@tractorsmalaysia)

Website : [www.tractors.com.my](http://www.tractors.com.my)