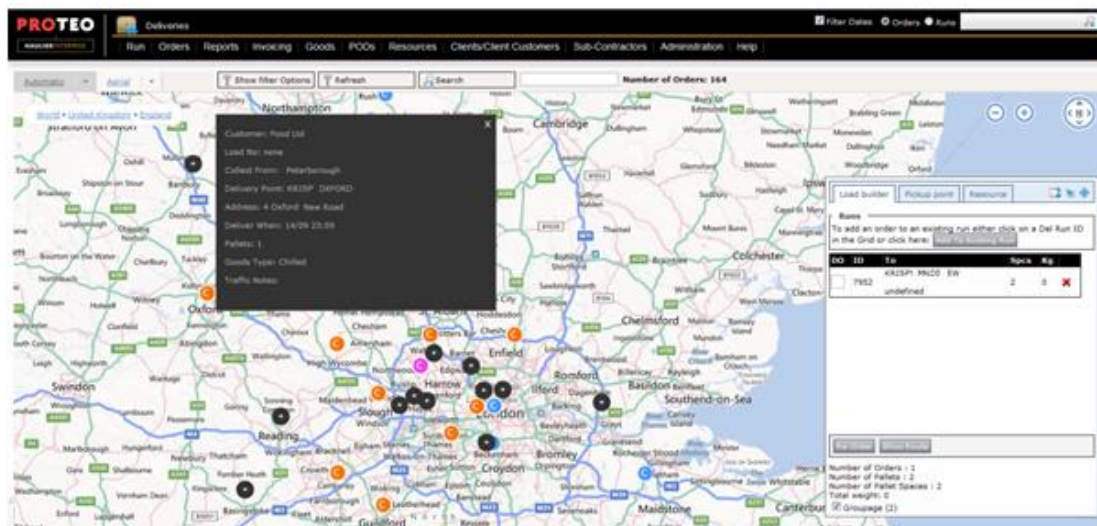


Haulier Enterprise Feature Overview






Working in partnership with a number of high profile operators within the haulage industry for more than a decade, Proteo has created a set of technology products and services that “Decrease the Chaos, Increase Margins and meets the demands made by its growing and sophisticated customer base.

Haulier Enterprise is one of our products and although we don’t like to categorise it, because there is really nothing quite like it, you might call it a Transport Management System “TMS”. We’ve taken a different approach to our “TMS”, one which first and foremost is about “Increasing Margins”, “Reducing Clunky Processes”, “Increasing Visibility” and providing Added Value to the client base in the form of “Two Way Integration. Unlike several dated applications currently available, Proteo HE utilises advances in technology to deliver an enhanced user experience to your business.

For example, when your planners look at your “TMS” does it look anything like this?



Remove the Need to Swop Between Applications - Our Feature Rich Environment Includes:

 Arrivals Board
  Client Portal
  Drag & Drop Planning
  Integration
  Invoicing

 Map Based Planning
  Capture Extras
  Pod Management
  Web Based Planning

 Customisable Tariffs
  Profitability
  In-Cab Integration