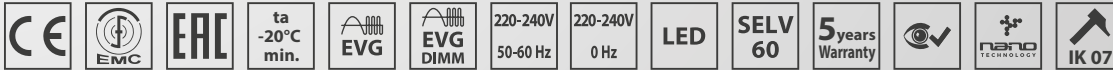




PITBUL-LED

IP 65



Application: Robust metal lighting fixture PITBUL-LED with high degree of protection is designed for areas, such as heavy industry, areas with occurrence of aggressive substances (e.g. oils, greases) and other manufacturing areas.

Ballast: EP – electronic 220-240 V/50-60 Hz AC, 220-240 V DC

Light source: LED, 4000K, CRI +80, MacAdam3

Housing: White painted steel sheet RAL 9003

Diffuser: CL – clear hardened safety glass
OP – matt hardened safety glass

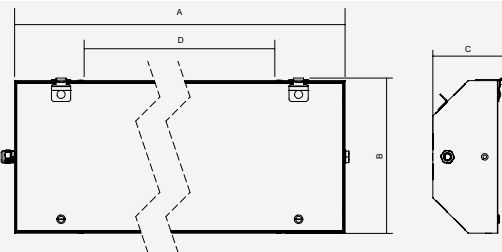
Reflector: White painted steel sheet RAL 9003

Fastening: Direct surface mounting by means of M8 screws, suspension via suspending brackets, recessed mounting via the frame, ceiling mounting via set of ceiling brackets, pole mounting via set of pole brackets, wall mounting via set of adjustable brackets.

Connection: Screwless three-pole terminal block, maximum diameter of wires 2.5 mm²

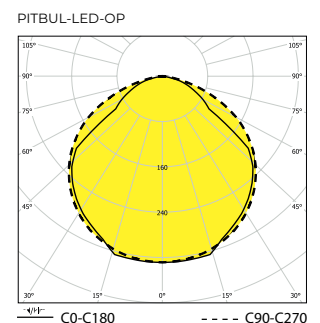
Standard equipment: Cable gland Pg13.5 for diameter of cable 7-12 mm and sealing plug.

Calculated lifetime – LED modules: L80B10 ta35 – 70 000h, L70B10 ta35 – 100 000h

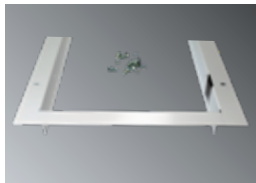


Order number	Name	Lighting fixture luminous lux (lm)	Power input (W)	Rated power output (lm/W)	Ta max (°C)	Dimensions of lighting fixture A x B x C (mm)	Mounting spacing D (mm)	Weight (kg)
4000K								
051850	PITBUL-LED-OP-5000-218-4K	4470	35	128	65	703x310x142	450	9,1
051851	PITBUL-LED-OP-10000-236-4K	8940	70	128	55	1313x310x142	800	13,8
051852	PITBUL-LED-OP-15000-258-4K	13410	104	129	55	1613x310x142	1100	16,6
051853	PITBUL-LED-OP-10000-418-4K	8899	70	127	55	703x369x142	450	8,9
051854	PITBUL-LED-OP-18300-436-4K	15895	121	131	50	1313x369x142	800	16,1
051855	PITBUL-LED-OP-29000-458-4K	24845	195	127	45	1613x369x142	1100	19,6

Tolerance of luminous flux and power input of the lighting fixture +/- 10%



Accessories on request

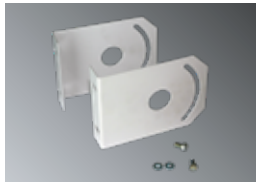


053941	Set of recessed frame PITBUL 1x-3x18W
053942	Set of recessed frame PITBUL 4x18W
053943	Set of recessed frame PITBUL 1x-3x36W
053944	Set of recessed frame PITBUL 4x36W
053945	Set of recessed frame PITBUL 1x-3x58W
053946	Set of recessed frame PITBUL 4x58W



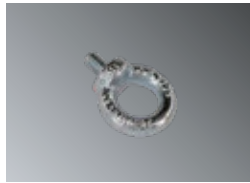
Direct mounting

054935	Set of stainless steel ceiling brackets PITBUL (2 pcs)
--------	--------------------------------------------------------



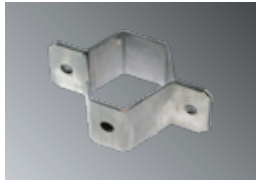
Direct mounting

053940	Set of adjustable brackets PITBUL
--------	-----------------------------------



Suspended mounting

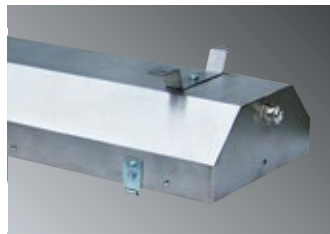
004642	Suspension bracket DIN 580 M8 PITBUL - 1 pc
--------	---------------------------------------------



Suspended mounting

051146	Pole bracket PITBUL (for Ø 50 mm)
--------	-----------------------------------

Lighting fixture detail



On request

DIM – dimmable electronic ballast (DALI, DSI, 1-10V)

GESIS – possibility to equip lighting fixtures with connectors

MULTI-1/3 - maintained emergency lighting

EM-1/3 - non-maintained emergency lighting

NEREZ – housing is made from stainless steel AISI 304 or AISI 316 (in case of STAINLESS STEEL version its declared for ambient temperature decreased about 5-10°C)

2.7K-6.5K - colour temperature

RAL - other colour scale

1/3 F - single-phase or three phase through wiring connection, maximum diameter of wires 2.5 mm²

NANO – lighting fixtures can be protected by special nano-layer (hydrophobic, oleo phobic or antibacterial protection)

CL - clear hardened safety glass

SF - silicone free

Standard order number	MULTI-1H	MULTI-3H	DALI	1F	3F	EM
051850	051856	051862	051871	051850 1F	051850 3F	051877
051851	051857	051863	051872	051851 1F	051851 3F	051878
051852	051858	051864	051873	051852 1F	051852 3F	051879
051853	051859	051865	051874	051853 1F	051853 3F	051880
051854	051860	051866	051875	051854 1F	051854 3F	051881
051855	051861	051867	051876	051855 1F	051855 3F	051882