



# PITBUL-Ex-LED

IP 65 / zone 1, 21



FTZÚ 16 ATEX 0089X



**Application:** Dustproof LED luminaire series PITBUL-Ex-LED with resistance against of splashing water is designed for lighting areas with danger of explosion. Luminaire is certified by FTZÚ Ostrava-Radvanice (certificate FTZÚ 16 ATEX 0089X).

**Ballast:** Electronic 110 – 254 V, 50/60 Hz, 220 – 250 V, 0 Hz DC

**Light source:** LED, 4000K, CRI +80

**Body:** White painted metal sheet RAL9003

**Cover:** Opal tempered safety glass

**Fastening:** Fastening with M8 screws through the base, with ceiling brackets or adjustable brackets, suspension via suspension brackets, into false ceiling by means of recessed frame, on the pole with set of pole brackets.

**Connection:** Screwless three-pole terminal block, max. cross section of wires 4,0 mm<sup>2</sup>

**Standard equipment:** 1pc plastic cable gland M20x1,5 for diameter of cable 7-12mm, 1pc plastic sealing plug

**Calculated lifetime – LED modules:**

L80B50 ta 55°C - 50 000h - 418/436

L80B50 ta 60°C - 50 000h - 218/236

**PITBUL-Ex-LED, MULTIPITBUL-Ex-LED, PITBUL-Ex-LED-Em**

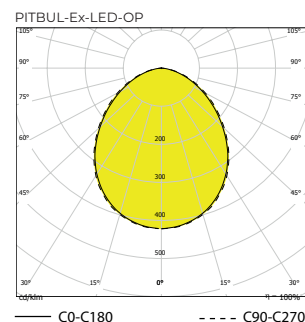
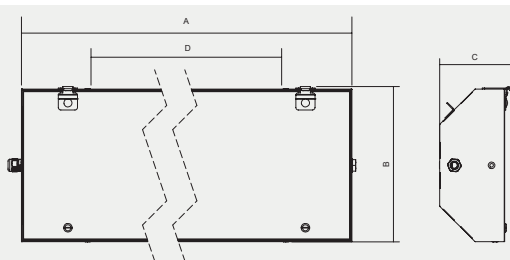
Ⓜ II 2G Ex db eb mb op is IIC T4 Gb

Ⓜ II 2D Ex tb op is IIC T67°C Db

**PITBUL-Ex-LED-WOD**

Ⓜ II 2G Ex eb mb op is IIC T4 Gb

Ⓜ II 2D Ex tb op is IIC T67°C Db

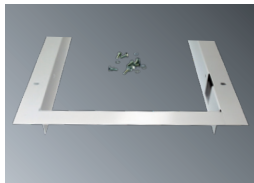


Standard order number	Name	Lighting fixture luminous flux (lm)	Power input (W)	System efficiency (lm/W)	Ta max (°C)	Lighting fixture dimensions A x B x C (mm)	Mounting hole D (mm)	Weight (kg)
053696	PITBUL-Ex-LED-OP-WOD-4000-218-4K	3373	30	112	60	703x310x142	450	7,7
053697	PITBUL-Ex-LED-OP-WOD-8000-418-4K	6663	51	131	55	703x369x142	450	10,3
053698	PITBUL-Ex-LED-OP-WOD-8000-236-4K	6742	53	127	60	1313x310x142	800	15,1
053699	PITBUL-Ex-LED-OP-WOD-16000-436-4K	13447	102	132	55	1313x369x142	800	19,4
053700	PITBUL-Ex-LED-OP-D-4000-218-4K	3373	30	112	60	703x310x142	450	7,7
053701	PITBUL-Ex-LED-OP-D-8000-418-4K	6663	51	131	55	703x369x142	450	10,3
053702	PITBUL-Ex-LED-OP-D-8000-236-4K	6742	53	127	60	1313x310x142	800	15,1
053703	PITBUL-Ex-LED-OP-D-16000-436-4K	13447	102	132	55	1313x369x142	800	19,4

Tolerance of luminous flux and power input of the lighting fixture +/- 10%

**SAFE answers to HAZARDOUS questions**

## Accessories on request



053941	Set of recessed frame PITBUL 1x-3x18W
053942	Set of recessed frame PITBUL 4x18W
053943	Set of recessed frame PITBUL 1x-3x36W
053944	Set of recessed frame PITBUL 4x36W



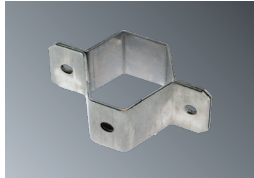
054935	PITBUL set of ceiling stainless steel brackets-AISI 304 (2pcs)
--------	----------------------------------------------------------------



053940	Set of adjustable brackets PITBUL
--------	-----------------------------------



004642	Suspension bracket DIN 580 M8
--------	-------------------------------



051146	PITBUL pole bracket for diameter Ø50mm-AISI 304 (1pc)
--------	-------------------------------------------------------

### Accessories for armoured cable M20

008052	Cable gland BIMED M20x1,5 ORION UNIVERSAL (8+/- 0,5Nm)
008091	Sealing plug WISKA EMVS20 M20x1,5 Ex-nickel-plated brass
008093	Nut WISKA EMMU20 M20x1,5-nickel-plated brass
007047N	Flat sealing ring EPDM 27x18,5x1,5mm

### Accessories for armoured cable M25

008056	Cable gland BIMED KBA 2M(25) Brass M25x1,5
008089	Explosion-proof plastic plug M25x1,5
008035	Nut WISKA EMMU25 M25x1,5-nickel-plated brass
007075	Flat sealing ring EPDM 32x23,5x1,5mm

### Accessories M25

008061	Cable gland OBO V-TEC EX M25x1,5 - 2050331 (5,0 Nm)
008089	Sealing plug plastic Ex M25x1,5
008102	Nut plastic WISKA EMUG 25 M25x1,5 black
007075	Flat sealing ring EPDM 32x23,5x1,5mm

### Nickel-plated brass accessories M20

008092	Cable gland WISKA EMSKE20 M20x1,5 Ex-nickel-plated brass
008093	Nut WISKA EMMU20 M20x1,5-nickel-plated brass
008091	Sealing plug WISKA EMVS20 M20x1,5 Ex-nickel-plated brass
007047N	Flat sealing ring EPDM 27x18,5x1,5mm

## Lighting fixture detail



008052,008056



008092



008061

## System of marking

PITBUL-Ex-LED-XXXX-YYY-WOD	- without disconnecter
PITBUL-Ex-LED-XXXX-YYY-D	- with disconnecter
PITBUL-Ex-LED-XXXX-YYY-2D	- with two disconnectors
PITBUL-Ex-LED-XXXX-YYY-1F	- one-phase through wiring connection
PITBUL-Ex-LED-XXXX-YYY-3F	- three-phase through wiring connection

XXXX luminous flux value 4000/8000/16000  
YYY type of housing 218/236/418/436

## On request

**EM-1,5/3** - non-maintained emergency lighting

**1/3 F** - one or three phase through wiring connection, max. cross section of wires 4,0 mm<sup>2</sup>

**MULTI-1,5/3** - maintained emergency lighting

**NANO** - light fixture is protected by special nanolayer (hydrophobic, oleophobic or antibacterial protection)

**3000/4000/6000K** - colour temperature

**RAL** - another paint colour design

**NEREZ** - body from stainless steel sheet AISI 304 nebo AISI 316 (at stainless steel design is ambient temperature lower about 5-10°C)

Stadard order number	MULTI-1,5H	MULTI-3H	DALI	1F	3F	FROST*	EM	
053700	053708	053704	X	053700 1F	053700 3F	053690	053712	PITBUL-Ex-Em-LED-OP-600-218-4K
053701	053709	053705	X	053701 1F	053701 3F	053691	053713	PITBUL-Ex-Em-LED-OP-900-236-4K
053702	053710	053706	X	053702 1F	053702 3F	053692	053714	PITBUL-Ex-Em-LED-OP-400-218-4K
053703	053711	053707	X	053703 1F	053703 3F	053693	053715	PITBUL-Ex-Em-LED-OP-500-236-4K

\* luminaire suitable for ambient temperature -40°C

Use of lighting fixtures in areas with danger of explosion	Marking of external influences	Area classification	
		Marking	Directive
Danger of explosion of flammable dusts	BE3N1	ZONE 21,22	ČSN EN 60079-14, ČSN EN 60079-10-2
Danger of explosion of flammable gases and vapours	BE3N2	ZONE 1,2	ČSN EN 60079-14, ČSN EN 60079-10-1

## STL International Ltd

Hill Farm, Linton Hill, Maidstone, Kent, ME17 4AL, UK T. +44 (0)1622 749633 eMail. solutions@stl-int.co.uk Web. www.stl-int.co.uk