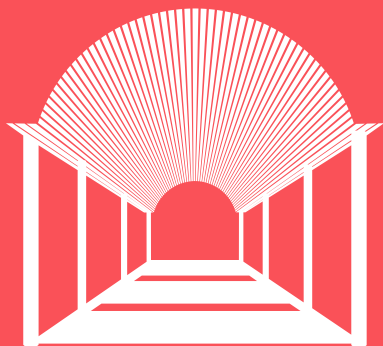
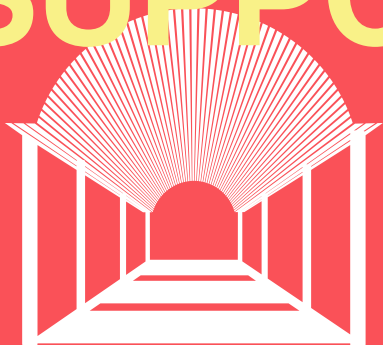


**POP UP
TRIAGE**



SUPPORTING



A SAFE

RETURN TO



HEALTHCARE



Our new pop-up triage proposal gates the public through to health centres, prior to consultation with a GP/clinician.

For the protection of healthcare professionals and the public from COVID-19 infection, a separated triage process including some basic virus symptom testing may become the 'new normal' for patients to access healthcare facilities.

Most GP and Primary Care centres are not designed for easy implementation of this type of process, more usually seen in Acute care settings. Our proposal utilises outdoor space, such as car parks to add a 'gateway' separated triage/testing facility to existing health centres, much like an airport security process prior to taking a flight.

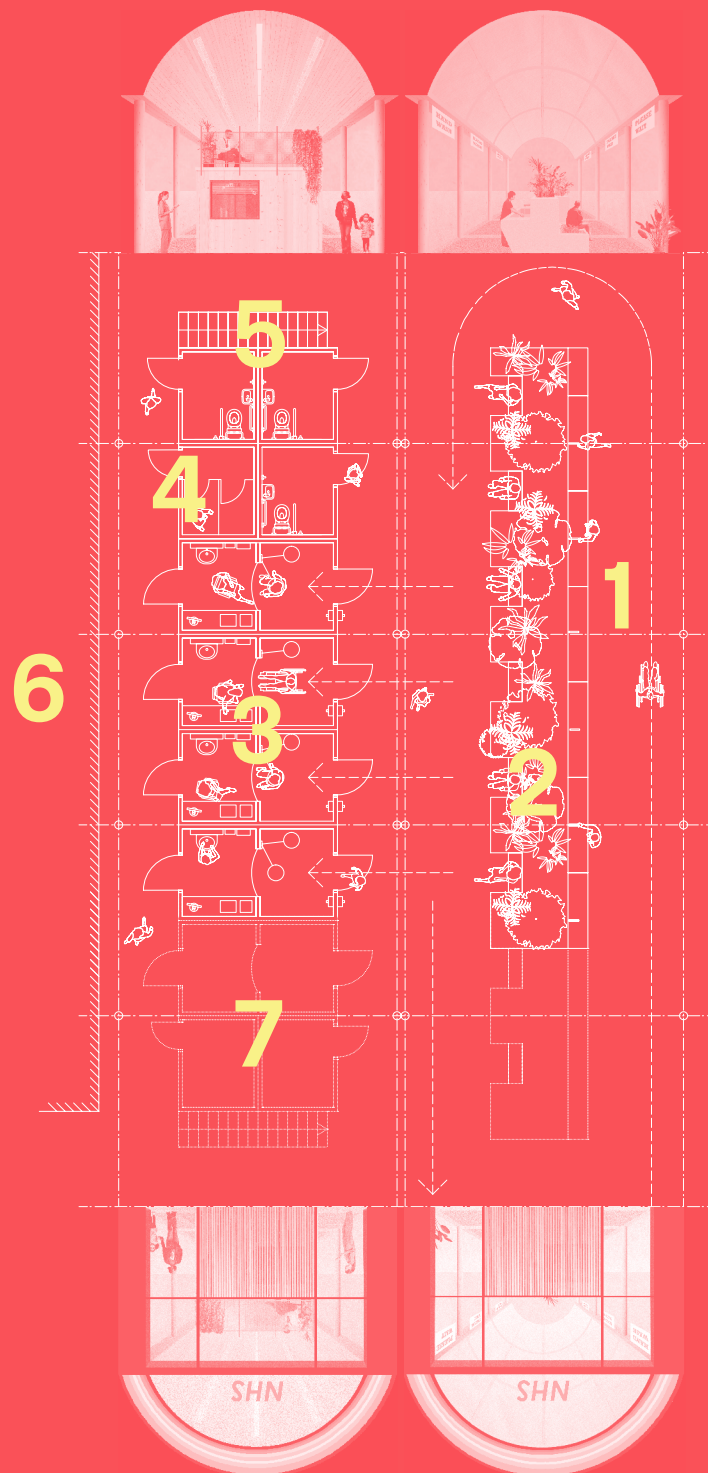
Generous segregated one-way circulation, socially distanced waiting areas using screened natural planting and plentiful hand washing provision are all key in creating a safe, pleasant and hygienic process for patients and staff. Modular triage kiosks are designed to fit in a parking space, housed in a timber vaulted structure providing shelter, natural light and ventilation.

The proposal is modular and scalable to easily suit the level of provision required by each health facility. The system is designed for flexibility, enabling future use as a separated facility for higher risk patients, with triage kiosks used as remote consultation spaces.

CLTH are able to offer services that can fulfil each health centre's needs through masterplanning, layout of spaces and service co-ordination, partnering with construction specialist McLaughlin & Harvey. Please get in touch to find out more:

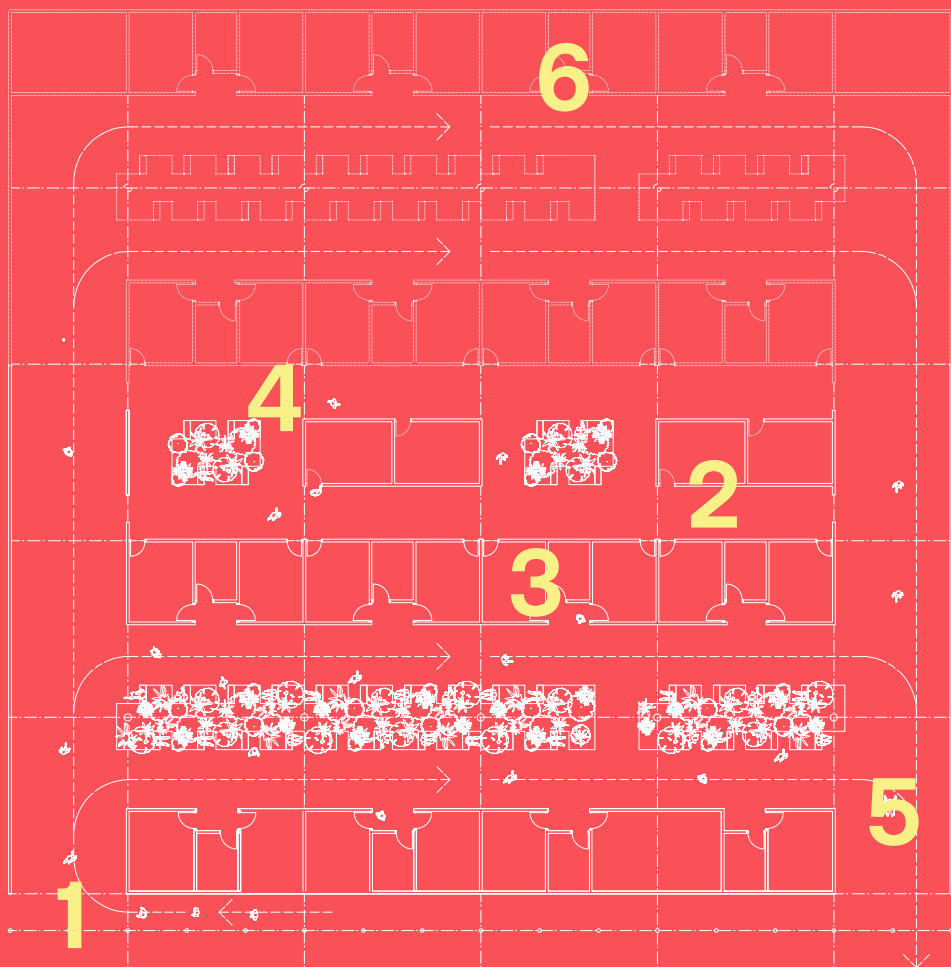
popup@clth.co.uk

CURL LA TOURELLE HEAD ARCHITECTURE
Unit 8, 16-24 Underwood Street
London N1 7JQ



View within light filled triage Pop-up, looking across handwashing and screened planted waiting area towards modular triage kiosks

- 1 Handsfree handwashing on entry, heights to suit disabled users and children
- 2 Socially distanced waiting amongst planting, screened from the public
- 3 Modular triage kiosks suitable for wheelchair users. Extra layer of security added through curved perspex separating screen
- 4 Staff and patient WC/change facilities separated
- 5 Access to upper level for staff welfare and administration
- 6 Facility located outside existing health centres, allowing complete separation of healthcare environments
- 7 Modular system easily scalable to suit required provision



Complete modular healthcare facility on scalable, repeatable grid with separated one-way circulation.



- 1 Sheltered, separated entry
- 2 Socially distanced waiting amongst planting screened from patients
- 3 8, 16 and 32m² clinical and support spaces, entrance doors away from main thoroughfare
- 4 Separate circulation and support spaces for staff
- 5 Separated exit routes
- 6 Modular system easily scalable to suit required provision