

Curl la Tourelle Head Architecture

Conservation



Empathise and engage

If there's one thing we've learned makes better buildings, it's empathy. Architecture never happens in isolation—and simply by being interested and engaged, we've found it's possible to open up the conversations that connect a scheme to its clients and community.

We ♥ constraints

We believe that the more constraints there are, the better the architecture. If there aren't any constraints, we create them. Challenging sites, existing buildings and complex briefs almost always present incredible opportunities for great design.

Social detail

If a site's constraints guide the bigger design decisions, then it's empathy that informs the smaller, social details. These details frame the human narratives that aren't included in the brief, anticipating specific moments in the users' lives.

Passive future

To limit our environmental impact, we start with what is already there. By manipulating the form and fabric of a building whether new or existing, we can work with the existing conditions of topography, light and orientation, and harness the natural energy sources offered by air, ground and water.

Mud on our boots

Good architecture is as much about what happens on the building site as it is about what's on the drawing board. By working alongside contractors as well as clients we can ring-fence the ideas and details that matter, championing the quality of the building throughout its construction.

Curl la Tourelle Head

Contents



3 Walpole Bay Tidal Pool, Margate

Ongoing



7 Whitehall Musuem, Sutton

Completion: January 2018
Contract Value: £1.1 million
Gross Internal Area: 492m²



4 Sailor's Church and Former Home for Smack Boys, Ramsgate

Ongoing



8 St Michael's Church Highgate

Ongoing



1 Hornsey Library, Haringey

Completion: August 2020
Contract Value: £2.7 million
Gross Internal Area: 3241m²



5 Silver Street, Deal

Ongoing



9 Delfont Mackintosh Theatres

Completion: June 2019



2 The Clockhouse, Ramsgate

Ongoing



6 Barbican Old Police Station, Shakespeare Tower

Completion: 2023
Gross Internal Area:

Hornsey Library, Haringey

Grade II Listed

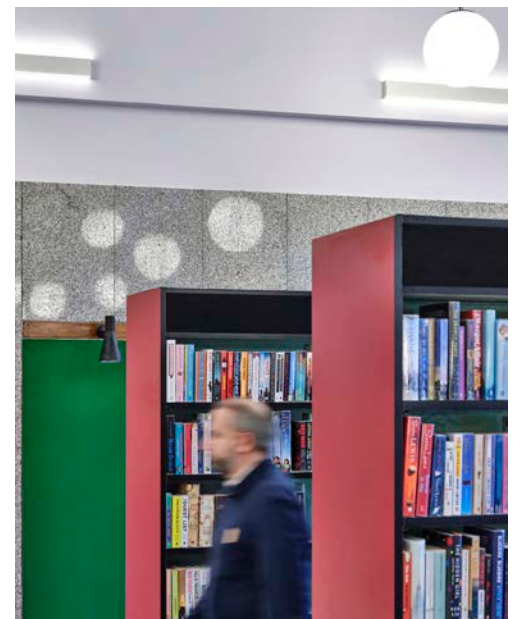




←
The leaking windows were replaced with like for like, double glazed windows to improve the thermal qualities of the library.

↑
The project featured on the front cover of the RIBA Journal in April 2021.

↗
We retained the original book stacks with cord upholstery and glazed backing to maintain the mid-century modern character of the interior.



Reactivating historic public facilities

Careful restoration of a mid-century modern library

Ensuring the longevity of the building through fabric improvements

Improving access for all

The Clockhouse, Ramsgate

Grade II * Listed





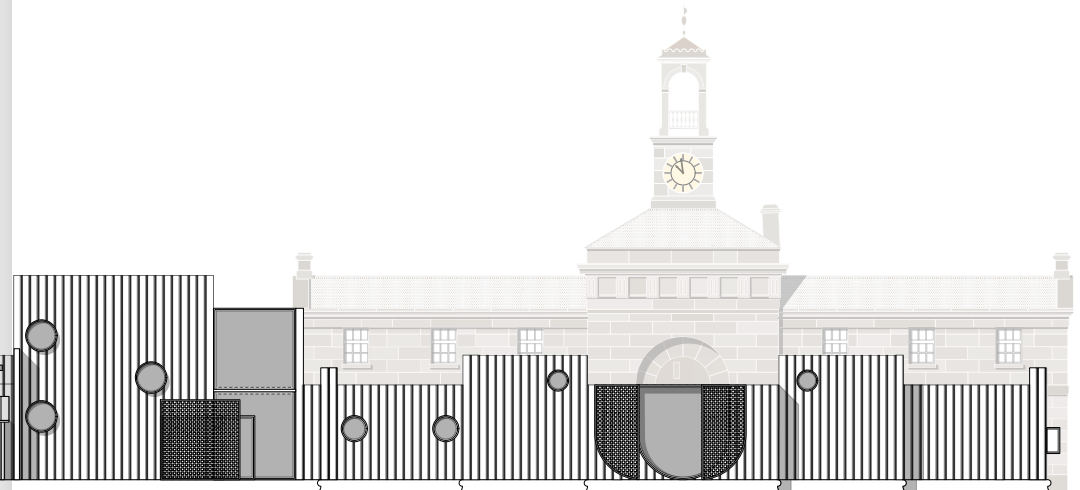
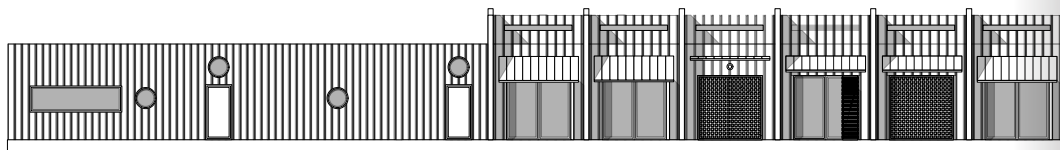


↑
Historic mapping showing the
Clockhouse with exteentions



The Clockhouse

Activation and Conservation



↑
Approaching the Clockhouse
from the water.

A future Heritage Hub for community storytelling and learning

Repairing the historic fabric

Broadening and diversifying participation in local history

Reusing existing structures to reduce carbon emissions

Walpole Bay Tidal Pool, Margate

Grade II Listed





Upgrading historic promenade buildings and public realm

Grade II listed tidal pool

Protecting the local ecology

Improving health and wellbeing along the coast of Margate



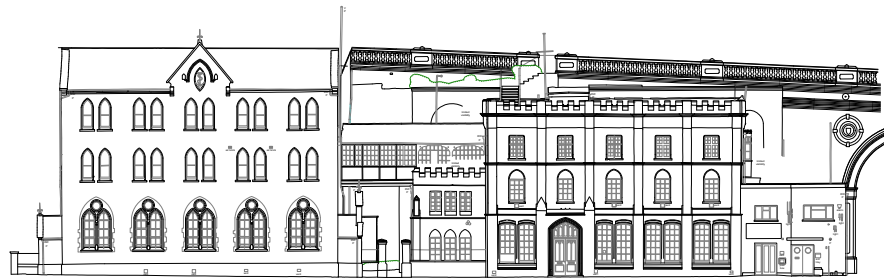
Sailor's Church and Former Home for
Smack Boys, Ramsgate
Grade II Listed



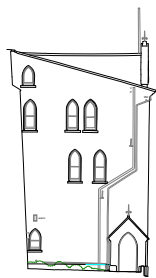


Sailor's Church and Former Home for Smack Boys

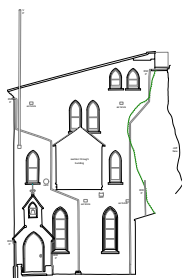
Harbour Wide Regeneration



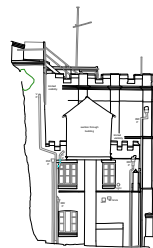
Elevation A



Elevation B



Elevation C



Elevation D



Elevation E



←
Elevational drawings of the former Home for Smack Boys. Smack Boys were young apprentices on fishing boats known as Smacks.

↑
The Smack Boys seen from the Lighthouse Tower.

Uncovering and conserving a rich maritime history

Public realm enhancements

Protecting the harbour's ecology

Remodelling public facilities

Silver Street, Deal





Silver Street



← The facade was re-rendered with lime following the removal of the harmful, cementitious render that had caused serious damage to the original Georgian bricks.

↑ Retaining the palimpsest.

→ Inside the winding Georgian House 3 storey.



Revealing historic building techniques

Retaining the buildings rich palimpsest

Using natural and breathable materials

Removing harmful, cementitious materials

Uncovering Layers of History

Barbican Old Police Station, Shakespeare Tower

Grade II Listed





Revealing historic building techniques

Retaining the buildings rich palimpsest

Using natural materials with modernist character

Recovering the illusion of the weightlessness of Shakespeare Tower

Whitehall Museum, Sutton

Grade II Listed





← Restored weatherboarding dating back to the 1600s. The sundial was erected in memory of the first chairman of the Friends of Whitehall.

↑ The museum photographed in 1925 had its characteristic white weatherboarding before falling into disrepair in the late 20th century.

Grade II* listed timber framed building dating back to the Tudor period

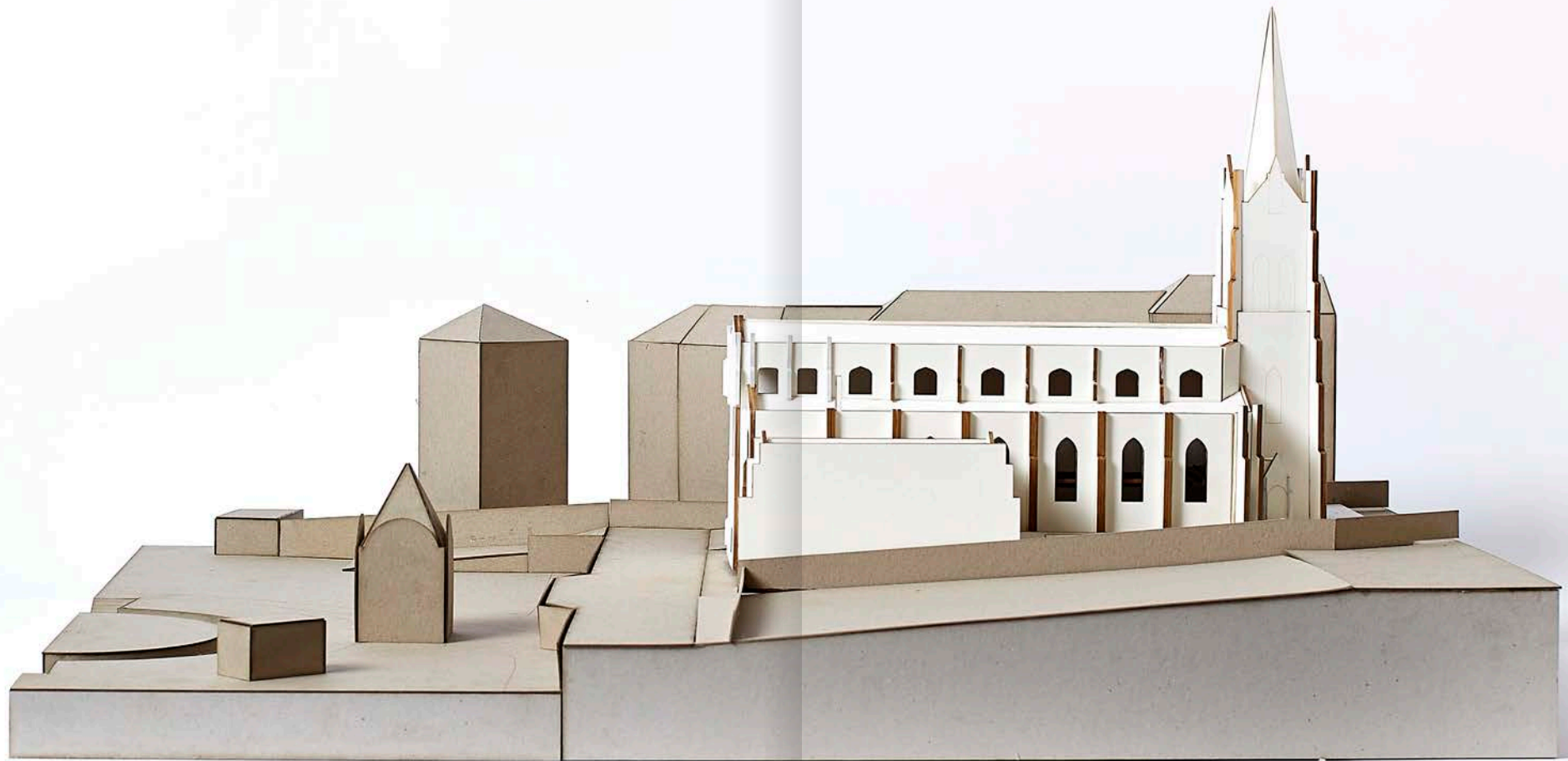
Green building techniques

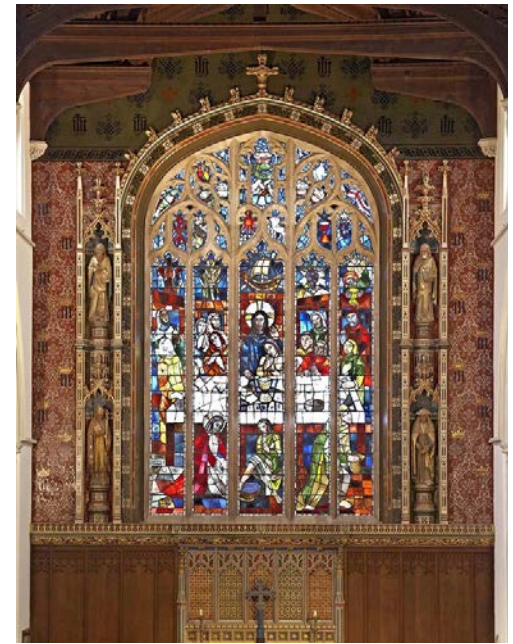
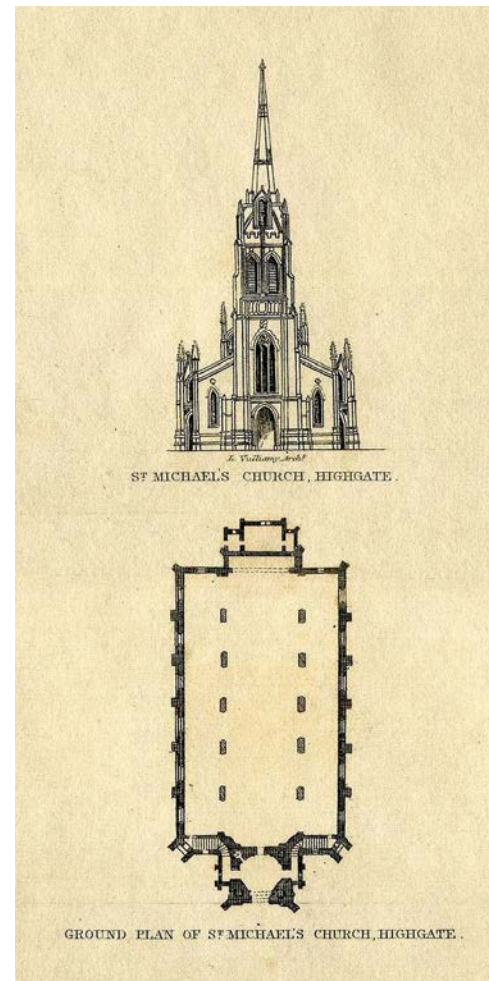
Careful repairs to the historic fabric

Creating an accessible environment for all

St Michael's Church, Highgate

Grade II* Listed





Modelling the restoration and reconfiguration of the crypt.

An historic etching of the elevation and ground plan of St Michael's Church, Highgate.

Temple Moore decorated the East Wall of Highgate Church in 1903. Moore was a pupil and associate of George Gilbert Scott.

Providing public access to a Grade II* listed building

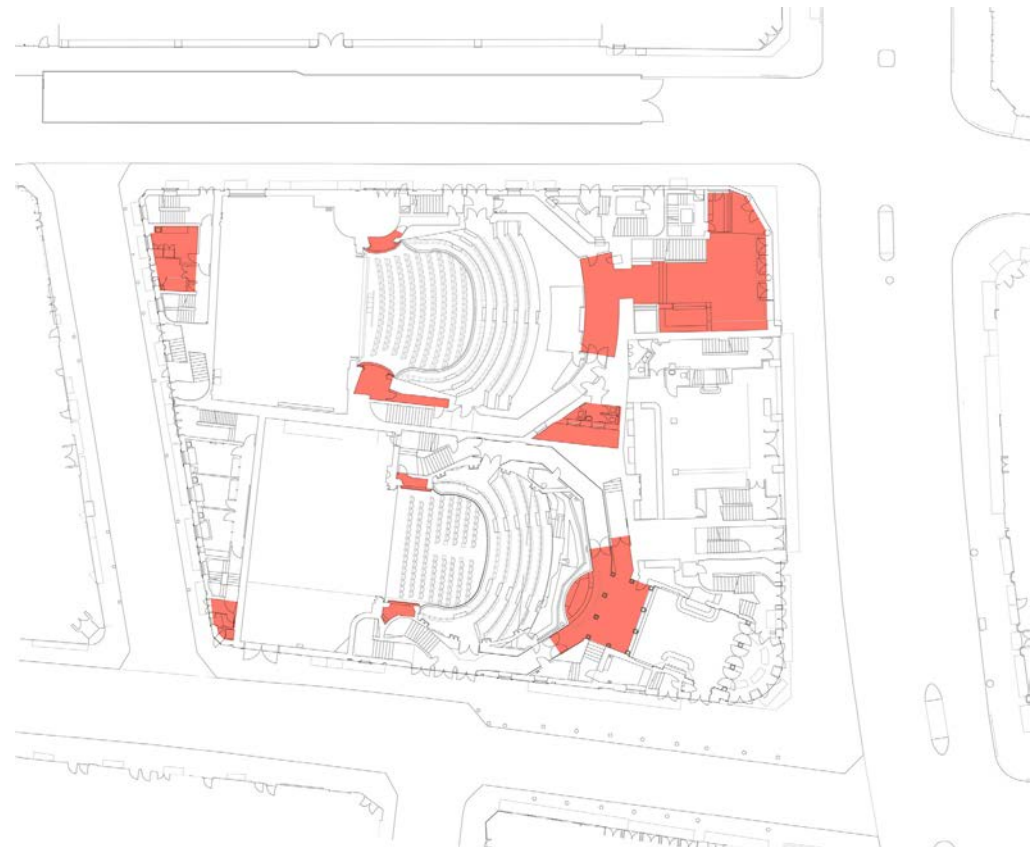
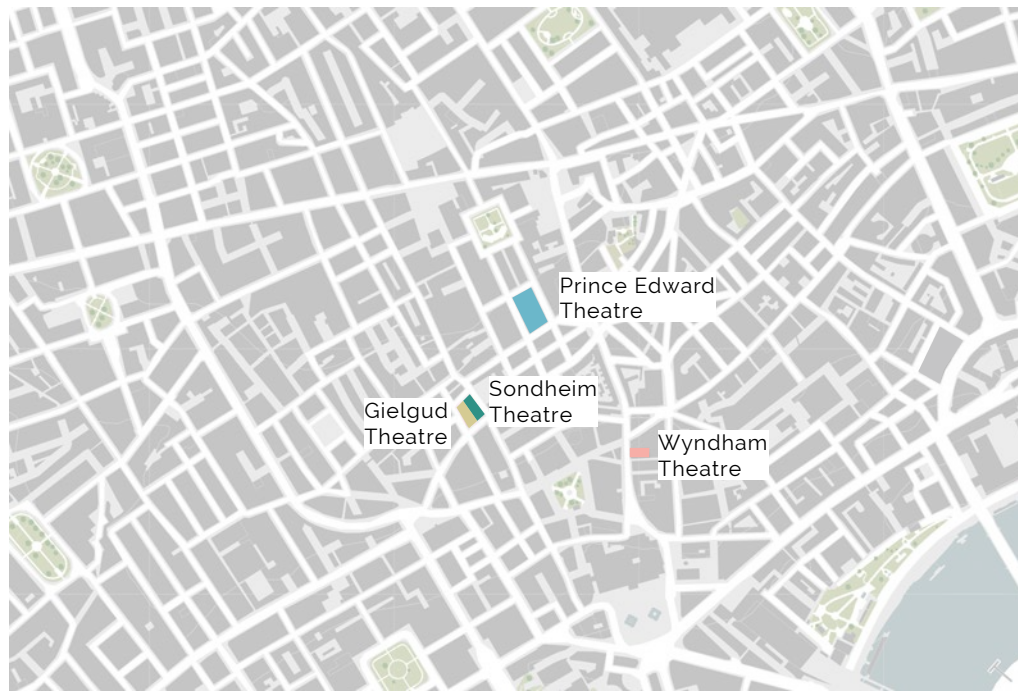
The home of the remains of poet Samuel Taylor Coleridge

Creating a sequence of professional, contemplative spaces

A focal point of Highgate

Delfont Mackintosh Theatres





←
Gielgud Theatre

Providing public access to a Grade II* listed building

The home of the remains of poet Samuel Taylor Coleridge

Inspired by Edwardian colourways and patterns

Upgrading outdated and overwhelmed facilities and services

Awards



Designed by BOB Design

Copyright ©2023

Curl la Tourelle Head