

# Curl la Tourelle Head Architecture



Education Booklet



## Empathise and engage

If there's one thing we've learned makes better buildings, it's empathy. Architecture never happens in isolation and simply by being interested and engaged, we've found it's possible to open up the conversations that connect a scheme to its clients and community.

## We ♥ constraints

We believe that the more constraints there are, the better the architecture. If there aren't any constraints, we create them. Challenging sites, existing buildings and complex briefs almost always present incredible opportunities for great design.

## Social detail

If a site's constraints guide the bigger design decisions, then it's empathy that informs the smaller, social details. These details frame the human narratives that aren't included in the brief, anticipating specific moments in the users' lives.

## Passive future

To limit our environmental impact, we start with what is already there. By manipulating the form and fabric of a building—whether new or existing—we can work with the existing conditions of topography, light and orientation, and harness the natural energy sources offered by air, ground and water.

## Mud on our boots

Good architecture is as much about what happens on the building site as it is about what's on the drawing board. By working alongside contractors as well as clients we can ring-fence the ideas and details that matter, championing the quality of the building throughout its construction.

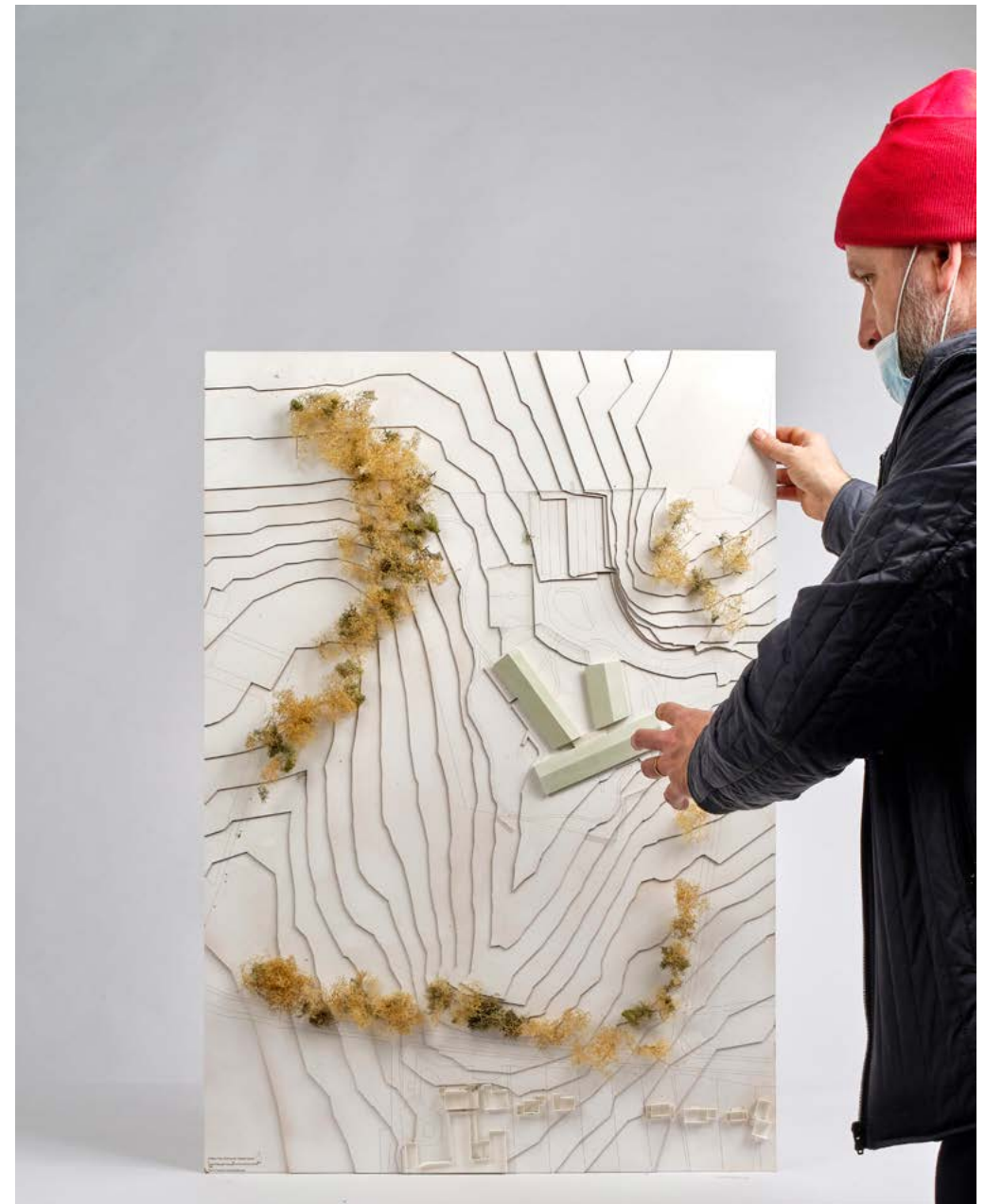
## Curl la Tourelle Head



# Alfreton Park Community School







Secure, welcoming and including learning environments

Light filled classrooms

Visibility and surveillance between classrooms and circulation

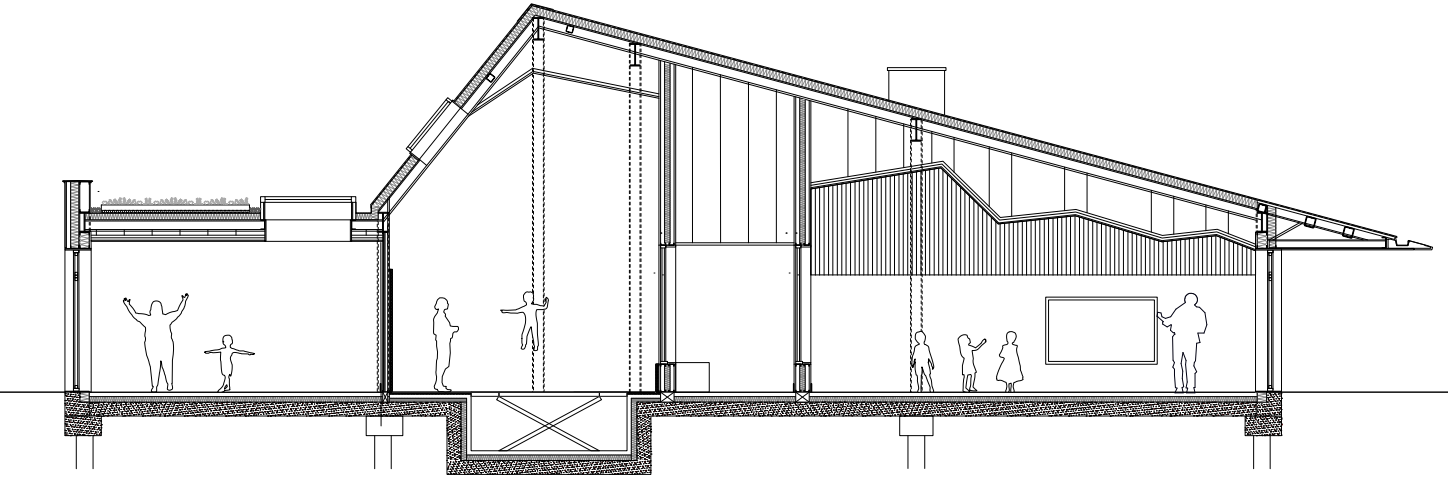
Sociable circulation

**All through SEND School**









All through SEND School



# Revitalize Peckham Rye



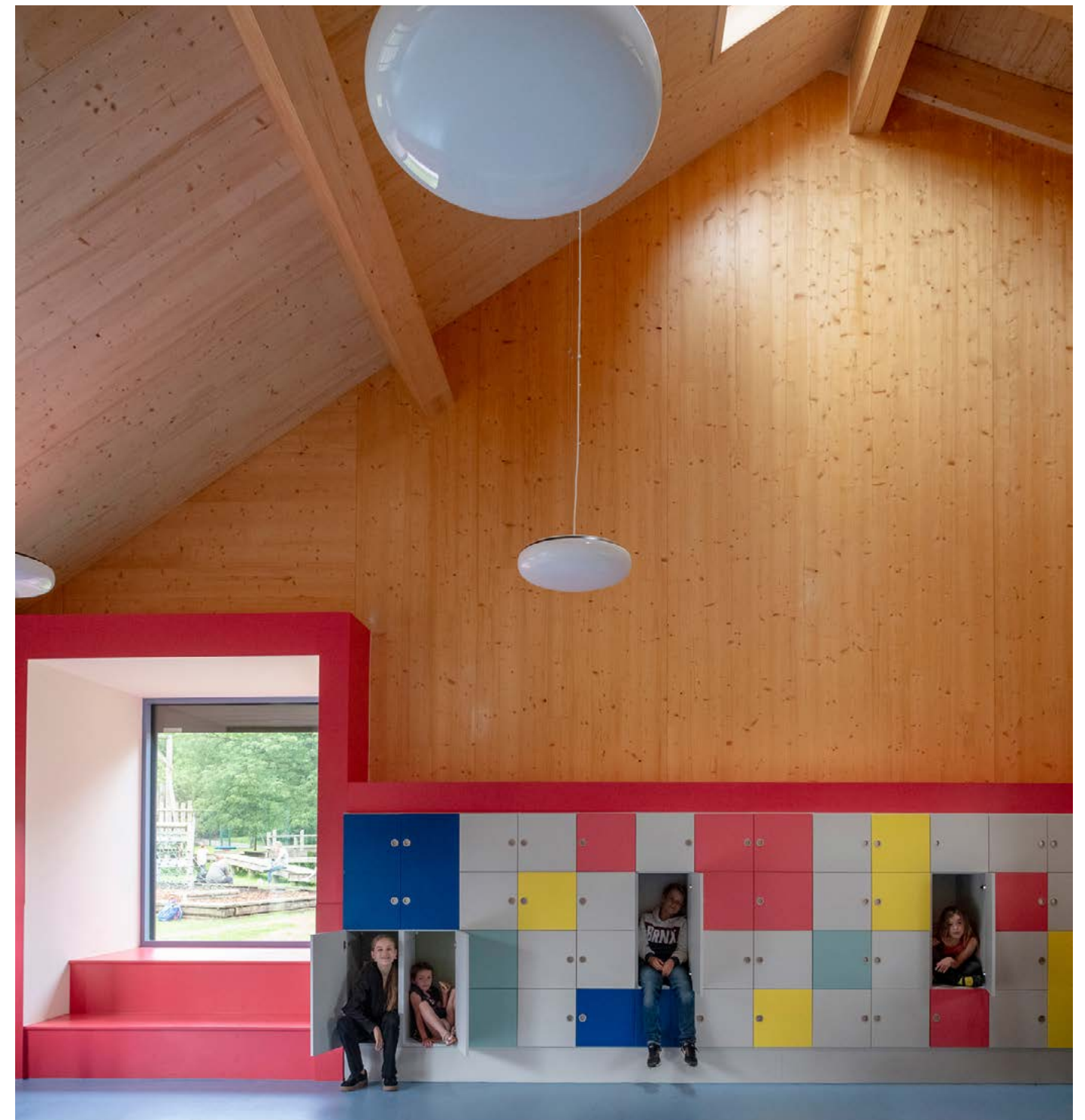
Unbuilt, **Built**, Imagined





"The new pavilion in Peckham Rye Park looks fantastic within the landscape. The shape and lines it makes are wonderful close up but when viewed from further away do not detract from the views of the park it sits in."

Will Walpole, *Environment and Social Regeneration Manager, LB Southwark*



Improving public facilities around the parkland area

Structural CLT and finishes

Light and airy spaces

Easy access and visibility

Off grid learning





# Unity Hub, Craig Park



Unbuilt, **Built**, Imagined





Award winning

Series of functional, dynamic and flexible informal learning spaces

Youth led design

Visibility and surveillance from surrounding park

**Diversity in learning**



# Creative Arts Hub, Norwich



Rectilinear, black timber clad pavillion

Set in front of a veil of trees

Gallery spaces illuminated by northern light

Further Education

Unbuilt, **Built**, Imagined



# Primary Expansion Programme, Brent



Unbuilt. Built. Imagined





8 Design and Build primary schools across Brent

Unique and characterful designs

Modular design allowing flexibility and variation

Inkeeping with the vernacular

**Modern Methods of Construction**



Priory School, Croydon



Unbuilt. **Built.** Imagined





Outdoor learning and social activities

Skywalk through the tree canopy to mature woods

Extended roof with play terraces and multi-games areas

**Forest School**



# Fitzjohn Primary School



***"Everyone in the whole school community is proud of our school. It has an amazing atmosphere which is felt every time you are here."***

Rob Earrey, Head Teacher.

RIBA Award Finalist

Full classroom fit out

High thermal performance, sustainable design

**Remodelling a Grade II listed building**

# Lexden Spring School, Colchester



**RICS Social Impact Awards East 2020 Winner  
Education Estates Awards 2020 Winner**

All through SEND specialist school for children with complex needs

Accommodation for 200+ people including students and staff

Public led design

**Designing within constraints**

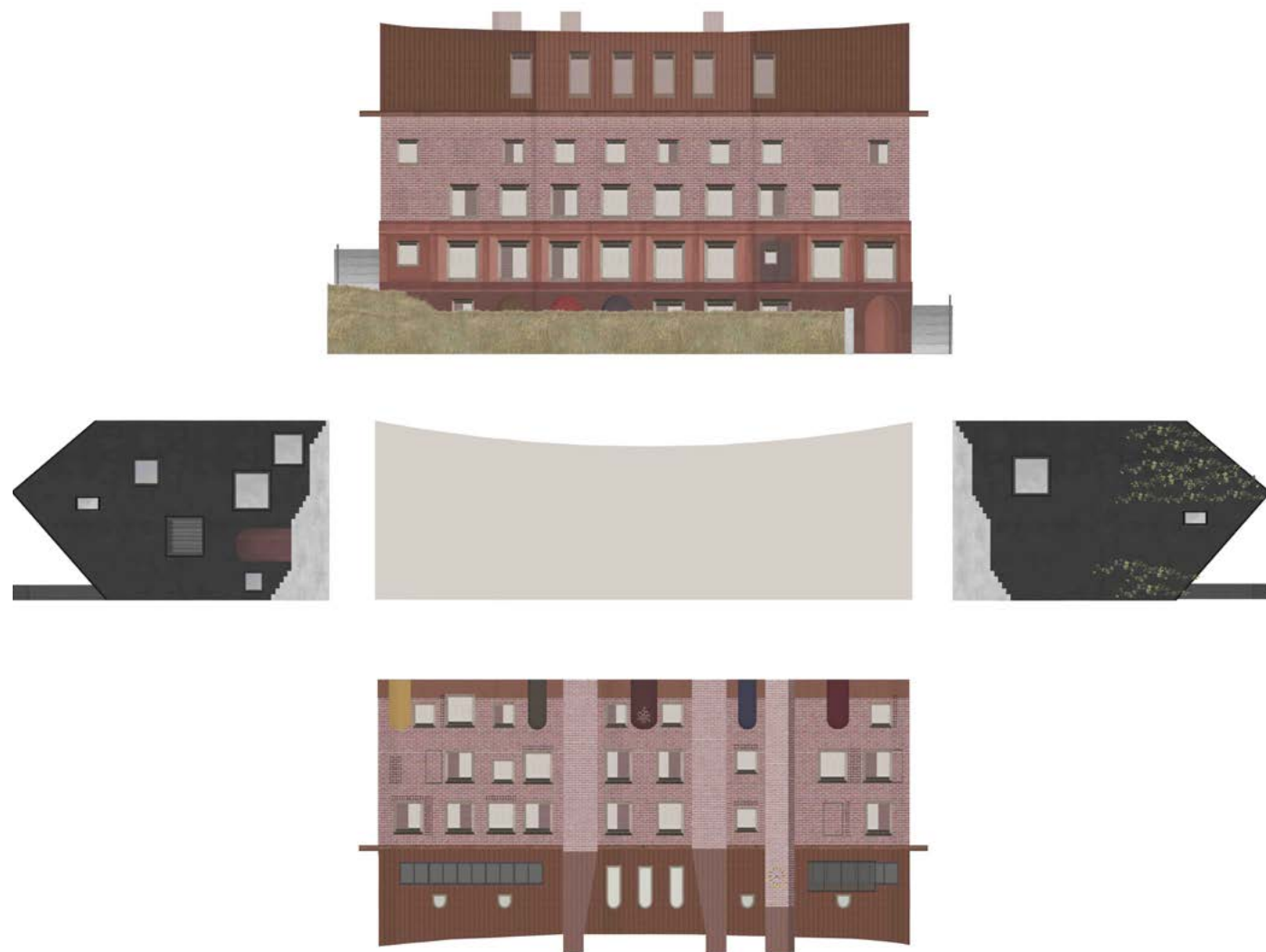


# John Lyon Independent School, Harrow on the Hill



Unbuilt, Built, Imagined





Designing within world heritage site and listed buildings

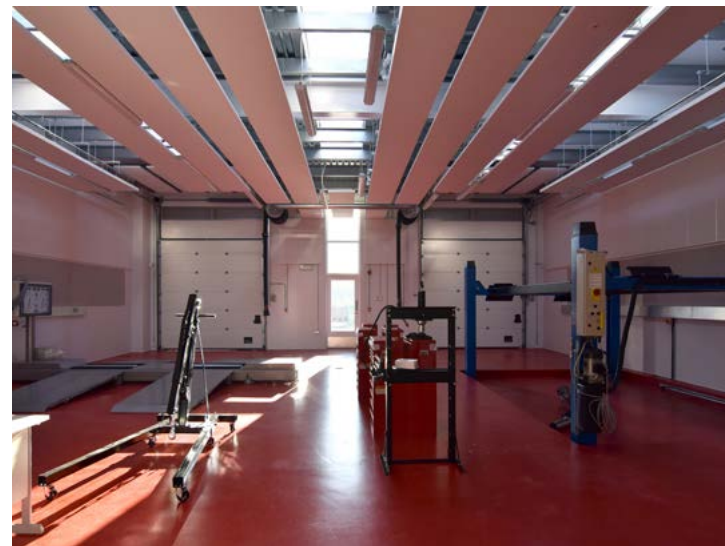
New STEAM centre

Forward thinking learning environment

Designing within constraint of an historic setting



# Beckmead College



Vocational college for young people  
People led design process  
Central Social zone with flexible activity spaces  
High thermal performance

Developing life long skills

# Wimbledon Park School, London

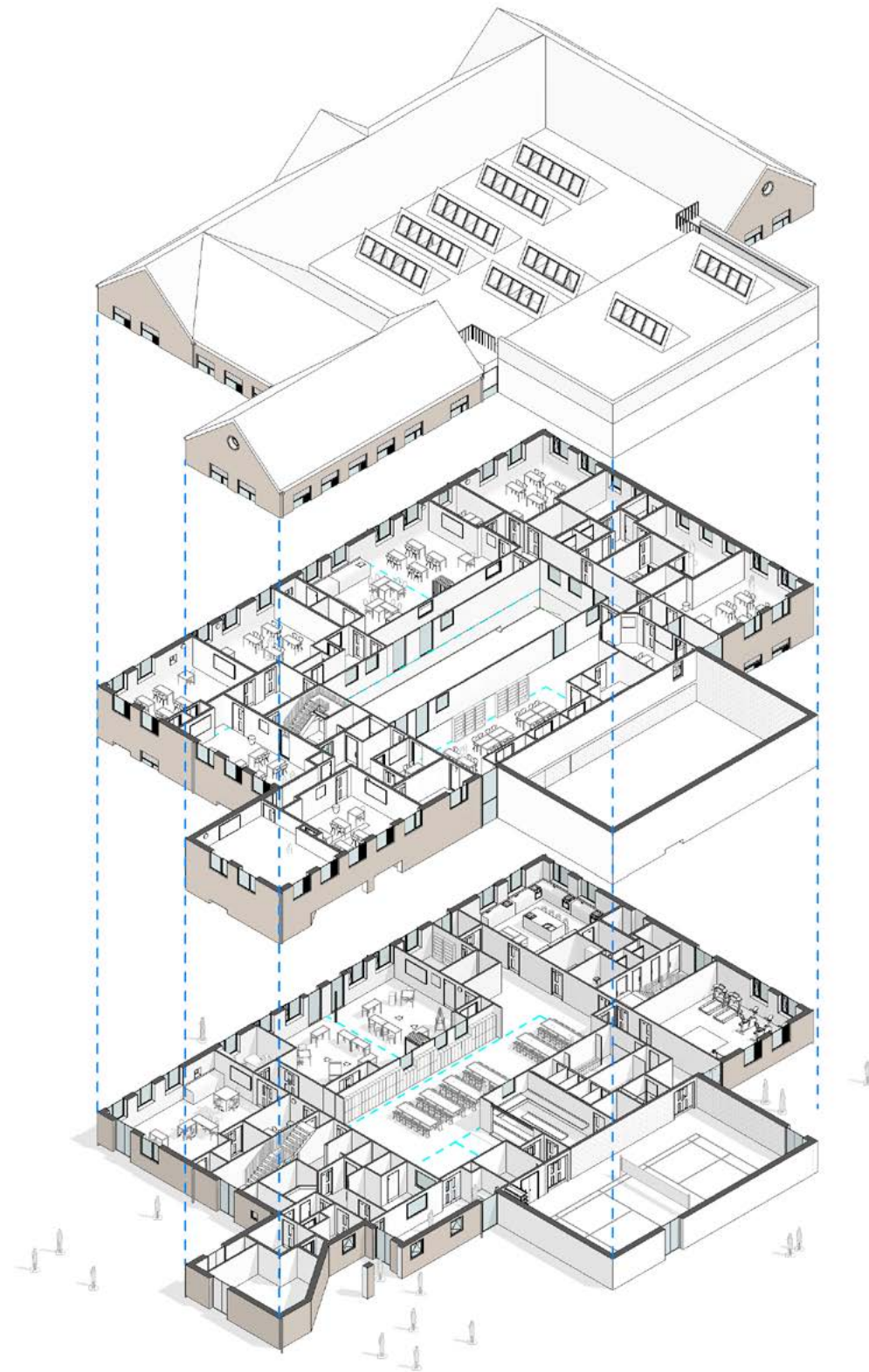


Interwoven indoor and outdoor learning spaces  
Operational net zero buildings  
Thermally efficient retrofitted buildings  
Sustainable SUDs strategy

Early years learning



# Pavillion Study Centre Pru, Barnet



DfE placement accomodation with intervention and respite learning spaces

Designed to DfE Output specification

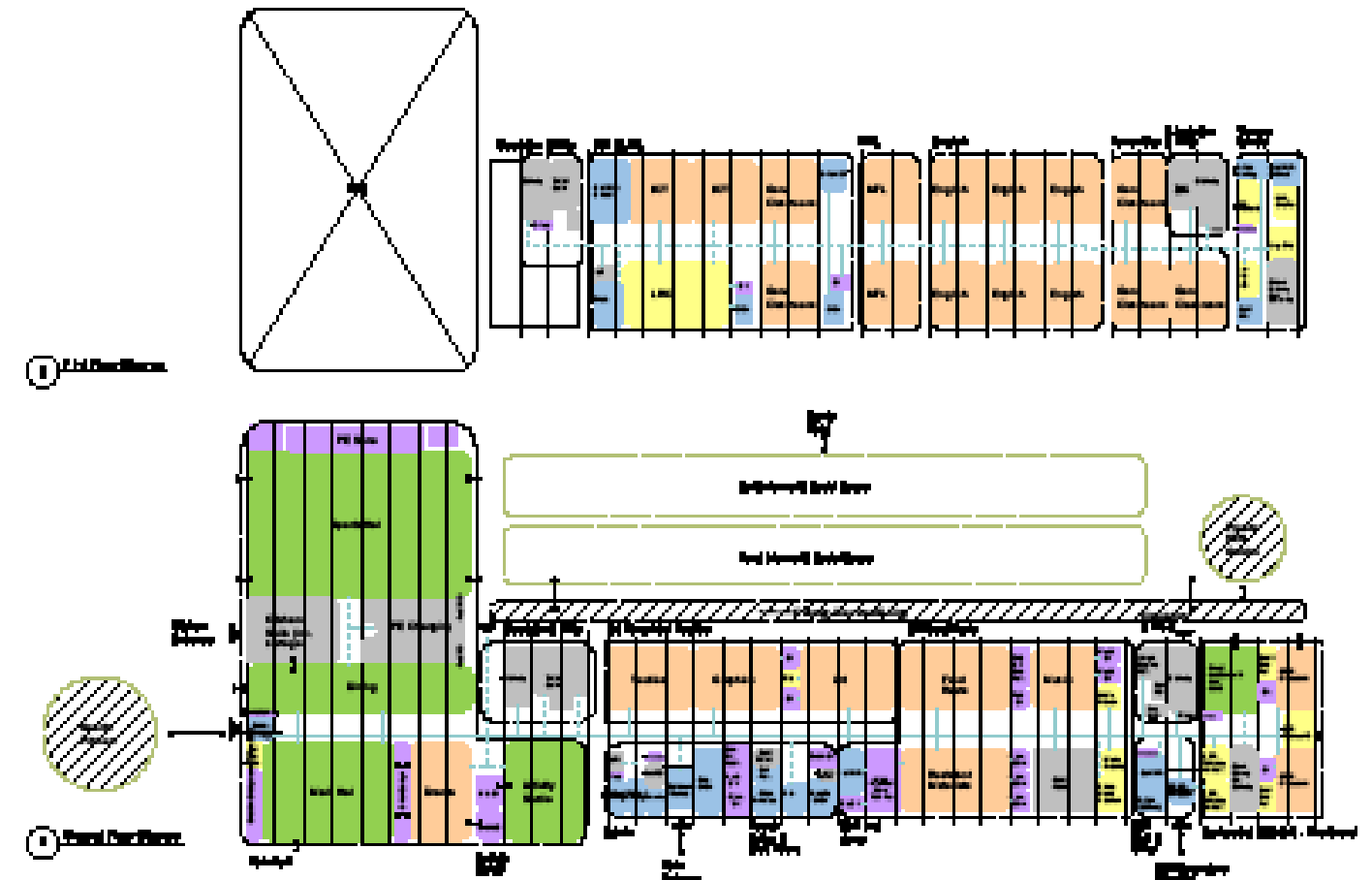
Classes open up to central coutyard offering passive suveillance

High thermal performance

Alternative provision school

Unbuilt, **Built**, Imagined

# DfE Schools Technical Advisors



Operational net zero buildings

Improving thermal efficiency through retrofit of existing buildings

Technical Advisors for 12+ Schools **Unbuilt**, Built, Imagined

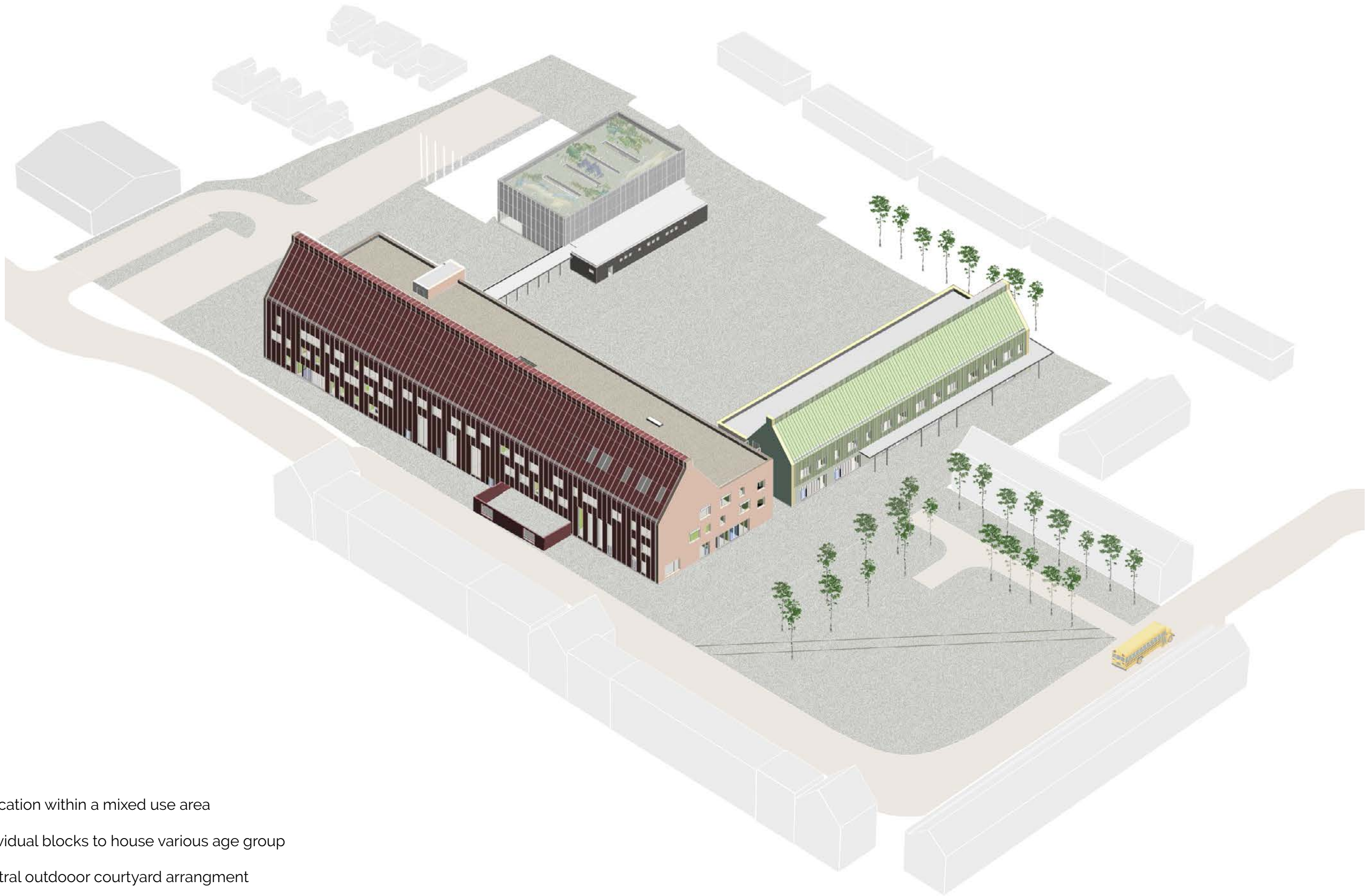


# Robert Clack Lymington Fields School



Unbuilt, Built, Imagined





Education within a mixed use area

Individual blocks to house various age group

Central outdoor courtyard arrangement

**Little School, Big School**

**Unbuilt, Built, Imagined**



# St Michael's Catholic High School



*"You have been imaginative and resourceful, and a pleasure to work with."*  
John Murphy, previous Head Teacher.

Masterplanning for new build and refurbishments of campus style school  
BCSE awarded "Best Sport Provision"

Campus style school

Unbuilt, **Built**, Imagined

# Abbotsfield School for Boys



*"We have been impressed with their team work and sympathetic understanding of the school's needs, as well as their knowledge of the constraints that exist when dealing with a working school environment."*  
Steve Outen, Bursar, Abbotsfield School.



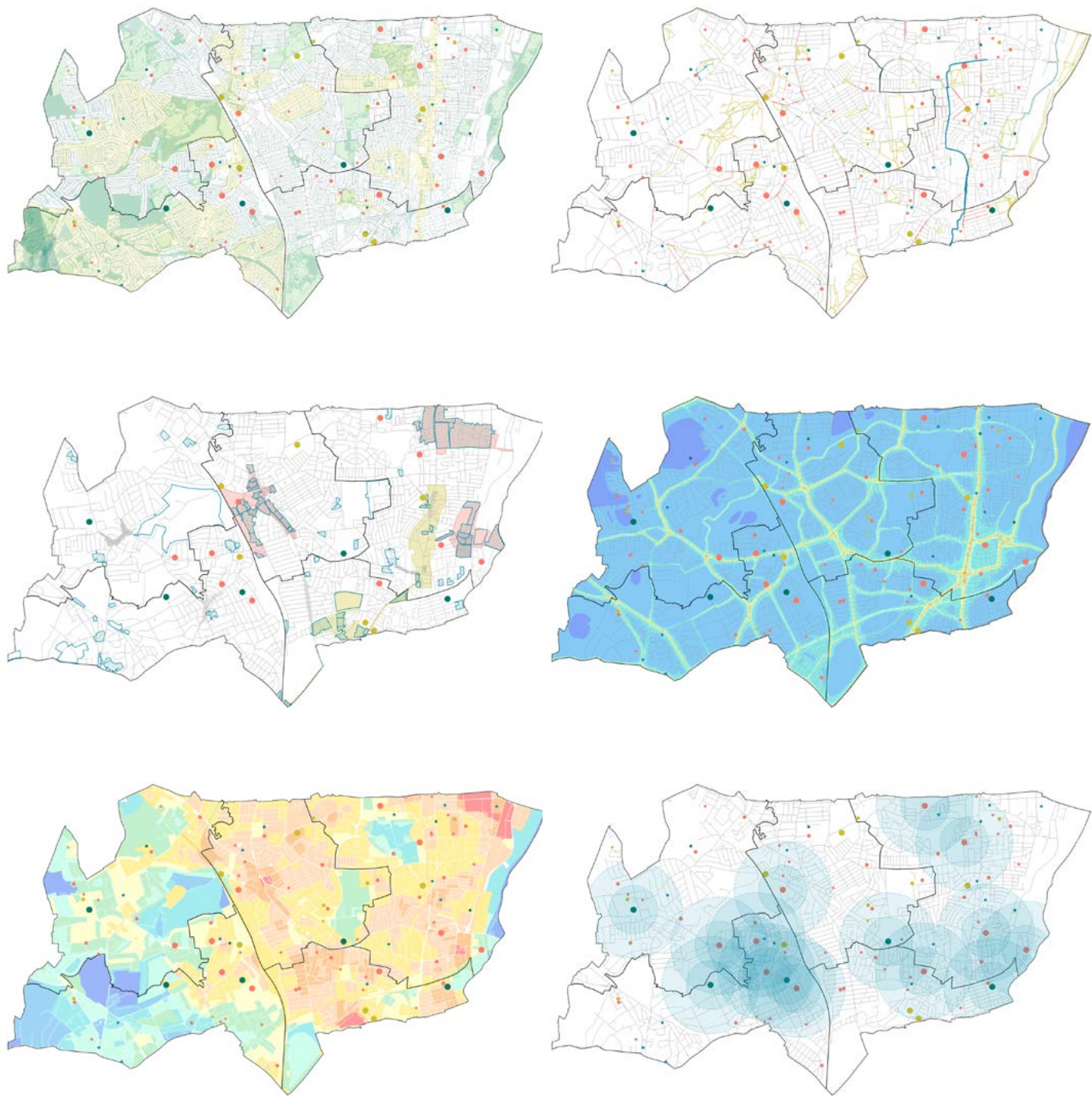
Maximizing outdoor playspace.  
Corridors as physical and acoustic barriers  
Engaging pupils throughout design stages  
Orientation of building to maximise daylight

Designing with people

Unbuilt, **Built**, Imagined



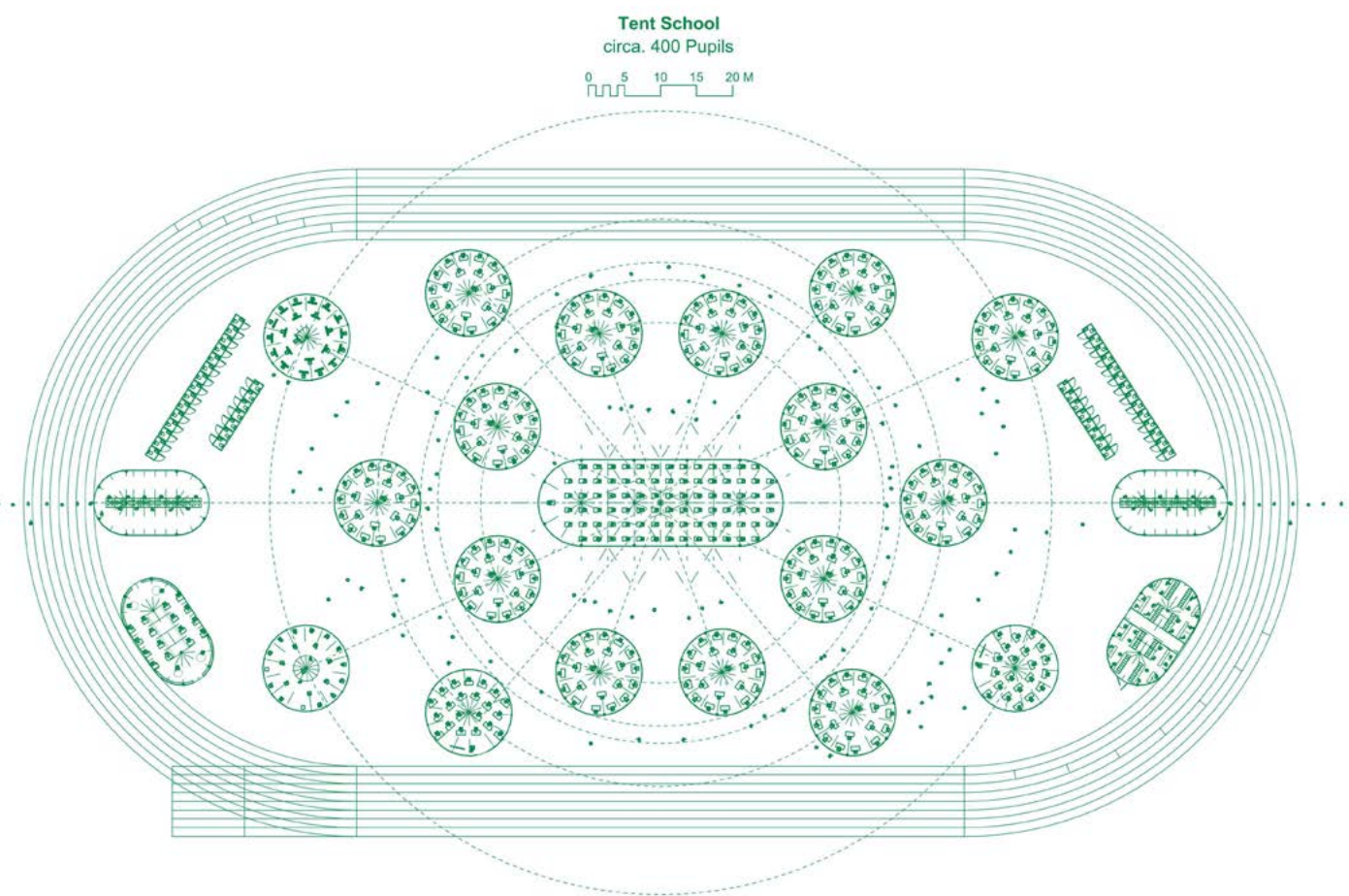
# Haringey Education Sites Masterplan



- Identifying opportunities for improvement, efficiency and sufficiency of existing school estates
- Considering the needs of Mainstream, Alternative Provision and SEND education delivery
- Implementing new SEND and AP strategy within the Borough of Haringey
- High quality, sustainable educational facilities for everyday use

Strategic masterplanning for next 20 years

# Pop Up Schools



- Providing solutions in challenging times.
- Promoting well being and safe learning environment
- Reusing available resources in periods of dormancy
- Temporary and adaptable methods of learning within outdoor settings

Learning within constraints

Unbuilt, Built, Imagined



# Kidbrooke Park School, Woolwich

Unbuilt, **Built**, Imagined



High quality, sustainable educational facilities for everyday use

Learning for different age groups

Providing for pupils and the wider community



# Trinity College, Dublin



Designing flexible but individual spaces

Developing various social environments

Exploring potential for space across 6 college buildings

**Learning through collaboration**

Unbuilt, Built, Imagined



# Thames Tidal School

Unbuilt, Built, Imagined



Unbuilt, Built, Imagined





Exemplar low carbon construction technologies

Low embodied energy generator

Generating energy from tidal turbines