






April—May 2025

NETA News

Coming Up

01/05/25		10:45-11:45 small conversation
08/05/25		10:45 - 12:30 Art
15/05/25		12 - 2pm cafe
22/05/25		1:30 - 3:30 large conversation



NETA Art Club Exhibition -
Long Art Gallery, Newcastle University - **14th—16th May 2025**

You can find **NETA** online: www.neta.org



A private group for NETA members



@neta.ncl



@NETA_Aphasia



North East Trust for Aphasia



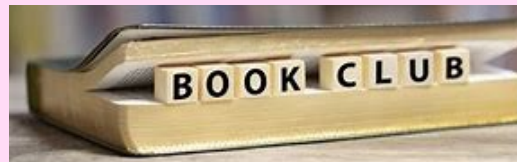
Fund Raising

A huge thank you to the Magenta Singers
Kat and Julie's Horse Raising bookies
And Izzy's Easter basket fundraisers.

Thank you!

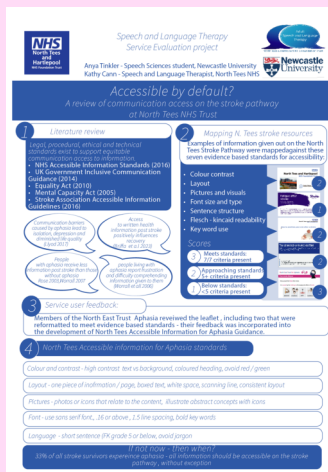
Research

NETA's research team have supported a project exploring **Reading in Aphasia** this research, led by Janet Webster, has now been published.



Read about it here:

<https://doi.org/10.1016/j.jcomdis.2025.106528>



NETA conversation groups have participated in a Newcastle University student project evaluating **Accessibility of information on the stroke pathway for North Tees and Hartlepool NHS Trust**

