

Update from the North East Trust for Aphasia November 2012

Celebrate Christmas with NETA



We hope that you will join in with your NETA friends to celebrate the start of the Christmas season.

We are holding our Christmas Lunch on:-

Thursday 20th December

We will meet at 12.30pm at Northern Football Club in Gosforth and enjoy some lovely food in good company.

Everyone is very welcome — you can bring your friends and family.

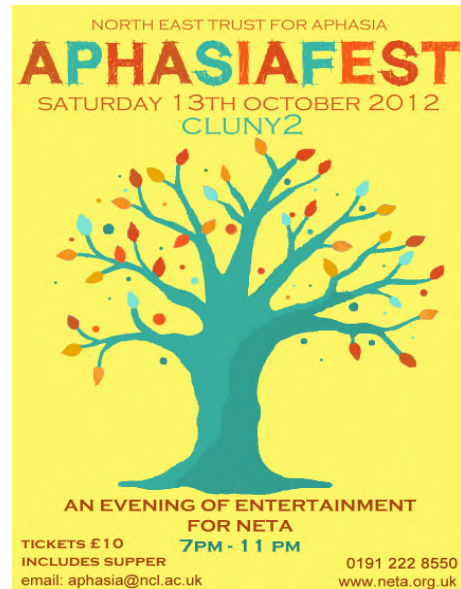
Enclosed with this newsletter is a booking form, simply fill it in and return it to NETA with your money.

Thank you for supporting our concert at the Cluny.

We enjoyed an evening of fantastic music.

We raised **£536-70**

All money raised will support the work of the
NETA Aphasia Support Centre



A big Thank You to Greggs who have donated **£2500** towards the cost of the Sage project which was enjoyed by many members of the Support Centre.

RAFFLE TICKETS

You will have received some raffle tickets in the post we would be really grateful if you could try to sell them.
All money raised will support the work of NETA.

NETA Information

If you would prefer to receive your newsletter via the website we will send you an email to tell you that a new newsletter is available

Please telephone Janet Moss on 0191 222 8550
Or email aphasia@ncl.ac.uk

Contact NETA:-

Further information is Available from NETA on

Tel: 0191 222 8550
Email: aphasia@ncl.ac.uk



Poetry Group



We had a poetry session at NETA before the summer.

A big thank you to poet Sue Spence for volunteering to lead this.

We now have a poetry group every week with Sue. We write Haiku poems as a group. Here is one about aphasia:

*It's like scrambled eggs
The fragments swirl together
Comes from the stomach.*

Summer Café

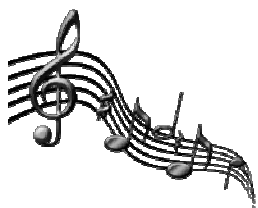
The NETA café was closed in the summer because of building works.



We went to other places instead: Hancock Museum, The Sage, Discovery Museum and Eldon Leisure.

It was good to see different places. Everyone enjoyed it.

A Taste of Sage



We started our music at the Sage. The tutor Bridie, conducts and plays guitar. There are 3 other helpers and a pianist.

We sing along. It is fun.

It is good to go to the Sage and meet in the café. We look forward to Mondays.



EXTRA COURSE

We have an extra course starting:

Christmas Floral Crafts

Thursday mornings 10-12 starting

29th November



The building work is completed.

NETA is back to normal with refurbished toilets.

MEET A MEMBER

Find out more about people who come to NETA!



Name: Nargis Haq

Where do you live? In Heaton, Newcastle

When did you have your stroke? In 2006

What do you like about NETA?

Meeting friends and making new friends

What family do you have?

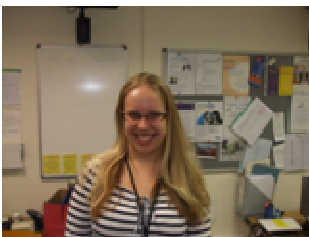
A husband and 3 grown-up daughters .

I was born in Newcastle and Dad lived here since 1932.

What do you do outside of NETA?

I go to a group at the Minories and I like cooking.

People update



Thanks to **Rosie** for doing a brilliant job as NETA's assistant. She has started her Masters Course in speech and language therapy. We hope she enjoys it.

Welcome to **Jennifer**, our **new assistant**, we hope she enjoys working with us.

Thanks to all our volunteers.

The authors of this newsletter are

Nargis, John, Rodney and Jen.