

# NETA NEWS



**Update from the North East Trust for Aphasia  
March 2013**



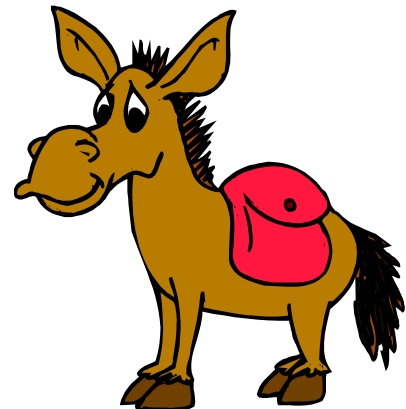
## DONKEY DERBY



**Friday 14th June**

Northern Football Club  
Macracken Park, Gosforth

**Tickets £8**



NETA will be hosting an evening of cinema racing on  
**Friday 14th June.**

We will enjoy a pie and peas supper and lots of good fun.

Those of you who enjoy a flutter can place their bets, but if not just come along and enjoy good company to help raise money to support the ongoing work of **NETA**.

The venue is accessible to wheelchairs and has plenty of free parking.

**Bring your family and friends.**

Tickets available from NETA and **MUST** be purchased in advance.

## A CELEBRATION



Members and guests enjoyed an afternoon of entertainment as they helped NETA celebrate an award from the Royal College of Speech and Language Therapists.

Janet Speight accepted the award from Julie Carr, who nominated our charity.



We enjoyed The Sage –NETA choir led by Bridie Jackson. Since the Taste of Sage project four or five people have joined other music and singing groups and 16 are in the choir.

### Poetry Group



We did a poetry course with Sue. We did it together. We thought about words. It was hard but satisfying and very interesting. Thank you to Sue. Well done. We enjoyed it and hope to see you again. We printed our poetry as an anthology. Have you bought your copy?

**Available from NETA - costing only £2-00**

Did you help to support the  
Christmas Raffle or  
attend the Christmas meal?

Together we raised £946-60  
**THANK YOU**

### Contact NETA:-

Further information is  
Available from  
NETA on



Tel:  
0191 222 8550  
Email: [aphasia@ncl.ac.uk](mailto:aphasia@ncl.ac.uk)

## Art Group



Sue Ruddy is running it again. Thanks Sue!  
Some of us are enjoying trying to draw with our left hands.

We are having fun drawing landscapes and other pictures.

## Music Group



The music group was self-lead while Steve Hogg was off. It has worked well. We are trying different kinds of music and singing along! Steve is very welcome back to lead our group.

## CAFÉ



Jen and Barbara are now volunteers and they run the café. They have help from other members too. Thanks to all the helpers.

By popular request, we plan to meet at different cafes around Newcastle in the summer.

## Christmas Floral Craft



We made flower arrangements for Halloween, bonfire night and Christmas. Heather showed us and then we made our own. Everyone in the group is friends. Thank you to Heather. We would like to do it again soon!

## Christmas Party



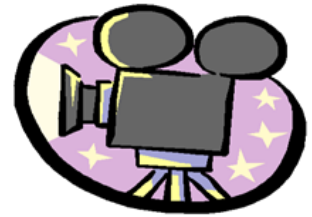
We went to the football club in Gosforth. All the staff were very good. There was a quiz and a raffle. It was good fun. Thank you to the NETA trustees for arranging it. We had a lovely time.

## Coming up after Easter

Photography course

Film Group

See Calendar  
for details:



Debate Group



Conversation Group



Café Out



### MEET A MEMBER

*Find out more about people who come to NETA!*

**Name** – Rodney Jobson

**Where do you live** - Hetton - Le - Hole,  
Houghton - Le – Spring.

**When did you have your stroke?** 12 years ago at Christmas time.

**What did you work as before?** I worked in the mines as an electrician from 1978 to 1986 in Eppleton then 1986 to 1991 in Murton then they closed.

After, I repaired kitchen appliances across the North East.

**What do you like about NETA?** I've been coming for 10 years. I like meeting my friends.

**What do you do outside NETA?** I've been driving again for four and a half years. I go to other Stroke groups.

I like singing and going to choir.

**What family do you have?** I have one son called Simon and he works at N.Power Peterlee.



This newsletter was compiled by Jen, John B, Nargis and Rodney.