

Current Performance Period\* : Period 2026 - 04  
22 June - 19 July 2025

\* There are 13 four-week periods in each railway year that runs from April to March



Punctuality at all stations	Punctuality at each station stop:					
	within 1 minute of schedule		within 3 minute of schedule		within 15 minutes of schedule	
	Period	MAA <sup>#</sup>	Period	MAA	Period	MAA
All LNER Services	57.4%	56.4%	74.3%	72.9%	93.4%	93.0%
LNER Routes:						
London-Edinburgh	58.5%	57.0%	74.8%	72.7%	93.0%	92.7%
London-West Yorkshire	58.0%	56.5%	76.1%	74.2%	95.2%	94.2%
London-West Yorkshire Extensions	58.5%	59.3%	77.4%	76.3%	92.9%	94.8%
London-Edinburgh Extensions	51.0%	53.3%	66.4%	69.4%	89.4%	90.6%

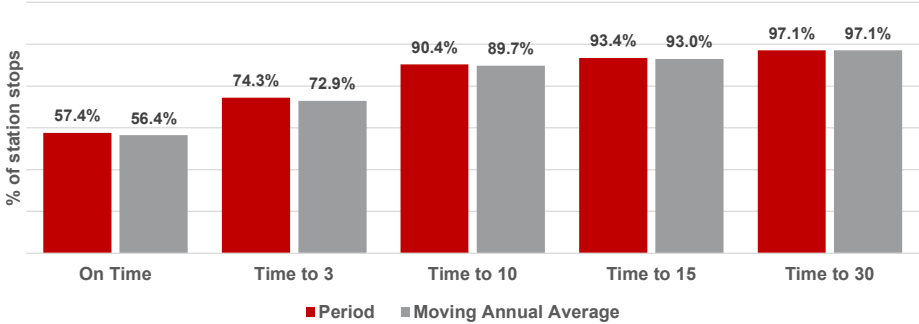
# Moving Annual Average, a measure of our average punctuality over the last 12 months

Punctuality at destination	Late arrivals at the final destination:					
	between 30 and 59 minutes		between 60 and 119 minutes		greater than 119 minutes	
	Number	Percentage	Number	Percentage	Number	Percentage
All LNER Services	140	3.0%	61	1.3%	3	0.1%
LNER Routes:						
London-Edinburgh	84	3.7%	37	1.6%	3	0.1%
London-West Yorkshire	32	1.6%	12	0.6%	0	0.0%
London-West Yorkshire Extensions	3	2.5%	2	1.6%	0	0.0%
London-Edinburgh Extensions	21	7.9%	10	3.8%	0	0.0%

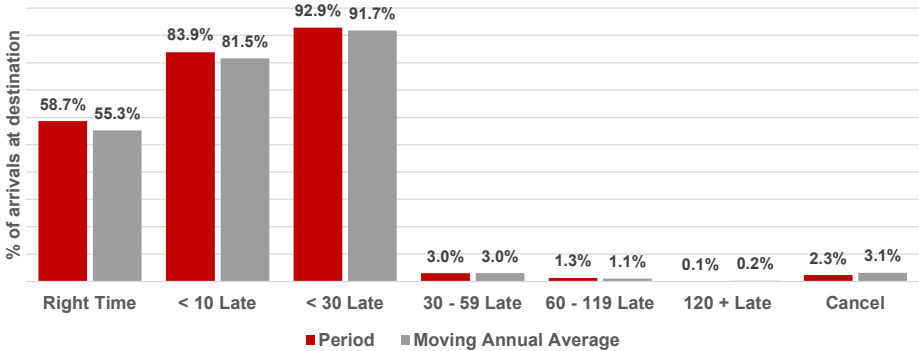
Services Cancelled	Fully Cancelled Services					
	Total scheduled services		Cancelled due to any cause		Cancelled due to LNER causes only	
	Period	Annual	Period	MAA	Period	MAA
Total LNER	4,669	57,330	2.3%	3.1%	0.4%	0.8%
Service Groups						
London-Edinburgh	2,260	26,756	2.0%	2.5%	0.1%	0.6%
London-West Yorkshire	2,022	25,093	2.9%	3.9%	0.8%	1.0%
London-West Yorkshire Extensions	122	1,490	0.4%	5.3%	0.4%	1.5%
London-Edinburgh Extensions	265	3,991	1.1%	2.0%	0.0%	0.7%

- London-Edinburgh includes LNER services between London and Edinburgh and also London and Middlesbrough
- London-Edinburgh Extensions includes LNER services between London, Aberdeen and Inverness
- London-West Yorkshire includes LNER services between London and Leeds, Bradford, Harrogate and Lincoln
- London-West Yorkshire Extensions includes LNER services between London and Skipton and London and Hull

Punctuality at each station stop



Late arrivals at the final destination



Seats Provided	Trains with less seats than planned			
	Number	Number	%	%
	Period	MAA	Period	MAA
Total LNER	8	3	0.2%	0.1%
Service Groups				
London-Scotland	1	1	0.0%	0.0%
London-West Yorkshire	7	2	0.3%	0.1%
London-West Yorkshire Extensions	0	0	0.0%	0.1%
London-Edinburgh Extensions	0	0	0.0%	0.0%

Punctuality at all stations - LNER	Punctuality at each station stop	
	Time to 3 %	Cancellations %
SCOTLAND		
Aberdeen	82.2%	0.5%
Arbroath	68.1%	0.5%
Aviemore	66.1%	0.0%
Blair Atholl	50.0%	0.0%
Carrbridge	50.0%	0.0%
Dunbar	77.5%	0.4%
Dunblane	25.0%	0.0%
Dundee	76.4%	0.5%
Dunkeld & Birnam	50.0%	0.0%
Edinburgh Waverley	80.0%	1.0%
Falkirk Grahamston	41.1%	0.0%
Gleneagles	61.8%	0.0%
Haymarket	61.7%	0.4%
Inverness	75.0%	0.0%
Inverkeithing	69.2%	0.5%
Kinguise	55.4%	0.0%
Kirkcaldy	70.7%	0.5%
Leuchars	73.4%	0.0%
Montrose	69.2%	0.5%
Newtonmore	50.0%	0.0%
Perth	55.4%	0.0%
Pitlochry	55.4%	0.0%
Reston	93.0%	0.0%
Stirling	51.8%	0.0%
Stonehaven	74.5%	0.5%

Punctuality at all stations - LNER	Punctuality at each station stop	
	Time to 3 %	Cancellations %
NORTH OF ENGLAND		
Alnmouth	78.2%	1.0%
Berwick-on-Tweed	69.4%	0.6%
Darlington	74.1%	1.3%
Durham	77.2%	1.6%
Middlesbrough	86.8%	5.0%
Morpeth	79.1%	0.9%
Newcastle	74.7%	1.3%
Northallerton	69.9%	2.1%
Thornaby	92.1%	5.0%
York	71.3%	1.4%

Punctuality at all stations - LNER	Punctuality at each station stop	
	Time to 3 %	Cancellations %
CENTRAL ENGLAND		
Bradford Forster Square	92.2%	2.3%
Brough	74.6%	0.0%
Doncaster	71.5%	1.7%
Harrogate	83.4%	5.1%
Horsforth	83.6%	5.3%
Hull	84.5%	0.0%
Keighley	84.0%	2.0%
Leeds	73.5%	2.5%
Selby	81.4%	0.0%
Shipley	92.4%	1.8%
Skipton	94.0%	2.0%
Wakefield Westgate	69.0%	2.5%
SOUTH ENGLAND		
Grantham	70.8%	1.5%
Lincoln	92.9%	1.8%
London Kings Cross	78.3%	0.9%
Newark Northgate	75.9%	1.6%
Peterborough	73.0%	1.3%
Retford	70.0%	2.3%
Stevenage	72.4%	0.0%

# LNER Planned and Cancelled Services - 2025-2026



Railway Period	Dates	Services originally planned in the timetable	Services fully removed from the timetable prior to the planned day of operation (Full Cancellations) *		Planned services on the day +	On the Day Cancellations		Services operated on the day	Services partially removed from the timetable prior to the planned day of operation (Part Cancellations) **		Notes relating to LNER's Operational Performance	
			LNER #	Other Industry (Not LNER) ~		LNER #	Other Industry (Not LNER) ~		LNER #	Other Industry (Not LNER) ~	Principal causes for services removed from the timetable prior to the planned day of operation	Principal causes for services removed from the timetable on the planned day of operation (On the Day Cancellations)
2604	22/06/25 - 19/07/25	4,670	1	0	4,669	21	86	4,563	7	0	LNER: - Trains in the incorrect location due to disruption  Other Industry:	LNER: - Train faults  Other Industry: - Track circuit failure at Peterborough - Stevenage points failure - Fatality at Northallerton

\* This includes adjustments made for the impact of large incidents or short term resource changes (sometimes referred to as 'P-coded cancellations)

\*\* These services ran for more than 50% their planned journey (these are also counted as 'P-coded cancellations for the cancelled section)

# Changes made due to LNER causes such as fleet technical or traincrew related issues

~ Changes made due to other industry (not LNER) causes such as major infrastructure defects or the effects of severe weather (eg storms, flooding)

+ These numbers form the basis on which periodic industry performance numbers are calculated