



LANGUAGE EXCHANGE

Welcome to USU Language Exchange!

Language Exchange is a chance to meet people from different backgrounds and swap languages in a fun, flexible and relaxed way.

Benefits of Language Exchange:

- Improve your language skills and confidence
- Learn in a flexible and relaxed way
- Customise sessions to your goals and abilities
- Build cross-cultural communication skills
- Meet people from around the world

In this Welcome Booklet, you'll find all you need to know about the program and to get started!

This includes some frequently asked questions about Language Exchange, plus conversation topics and prompts that you might like to use at your exchange sessions when you receive a buddy.

Frequently Asked Questions

Who can join Language Exchange?

Language Exchange is open to all USU members, domestic and international. You're also welcome to join whether you're studying on or off-campus. Once you receive an email from us about your buddy, simply contact them to let them know if you prefer to meet in-person or online, and arrange the exchange sessions as suitable from there.

If for any reason your buddy is hoping to have in-person or online sessions and this is not possible between you both, please feel free to contact us and we'll try to help out from there.

How does buddy matching work?

Our Language Exchange system makes buddy matches considering all your spoken languages and language preferences in order. If you've said that you're happy to learn any language and/or have two buddies, this is also taken into consideration.

When does matching happen?

Matches where possible are made throughout the semester between Weeks 3 and 11, with our larger rounds of matching happening in Weeks 3 and 6. Please note that matching times will vary between registrants, depending on the availability of the languages listed in your registration. You'll receive an email to let you know when we've found you a buddy!

How many hours do I have to commit in Language Exchange?

Language Exchange is designed to be entirely flexible around you and your buddy's schedules. Whether you prefer to meet weekly, fortnightly or sporadically, that's completely you and your buddy's choice. Simply let your buddy know when you first contact them and from there, organise a schedule that suits you both.

How do I meet people in this program?

To celebrate the start of Language Exchange each semester, we host a party at the beginning of the semester for all participants and those interested in Language Exchange. There are language activities, music and food to enjoy!

Throughout the semester, we also organise monthly catch ups. These are scheduled opportunities in a designated place on campus for you and your buddy to meet up. If you don't have a buddy yet, you're also welcome to attend these catch ups to meet other participants in the program.

Frequently Asked Questions

How many buddies can I have?

You can have up to two buddies in Language Exchange.

Can I request a preferred gender/study background/age of my buddy?

We very much understand that some participants may have preferences, however the matching system is currently unable to detect and apply these preferences. Doing so would also unfortunately limit the number of matches possible and students who are able to have a buddy.

If for any reason you're concerned about the suitability of the buddy you're matched with, please feel free to contact us and we'll try to make alternative arrangements from there.

Can I request a change in buddies?

Please note that we use an automated system to assign matches that considers all your spoken languages and preferences, in order, as well as if you've indicated you're happy to learn anything and/or have two buddies. Unfortunately, not all language combinations are always possible.

As such, each match made is the best available outcome given the registration details and language combinations available at that time. If the buddy match is rejected, we cannot guarantee that we'll be able to find another.

If you'd like to request a change due to a lack of response from your buddy or for any other reason, please feel free to contact us.

Can I update my registration details?

If you notice any errors or would like to change any details, please contact us.

How do I withdraw from the program?

If you're no longer able to participate in Language Exchange, please let your buddy know and contact us as early as possible so we can remove your registration.

I can't find the answer to my question.

Please contact us via the USU website [here](#).

Conversation Topics

In the next few pages, you'll find conversation starters that you may like to use when you meet your buddy!

Greetings

Introducing Yourself

Education

Work Life

Find out about

If you're a complete beginner in a language, we recommend bringing along a textbook or phrasebook to your sessions.

If you'd like help in finding some language-learning materials, you may also like to visit the University of Sydney library website [here!](#)

GREETINGS



Hello!

How are you?

Nice to meet you

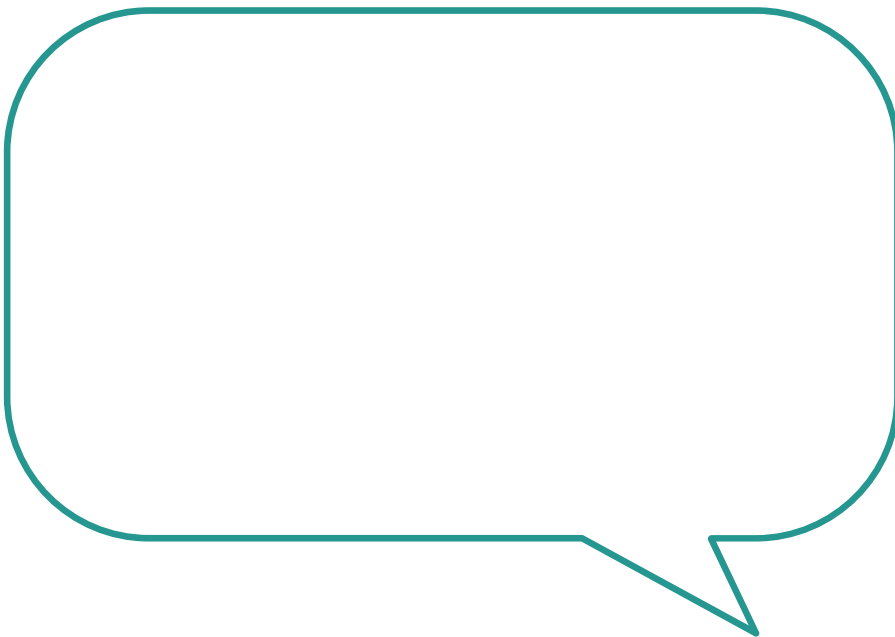


Good morning

Good afternoon

Goodbye



See you soon



INTRODUCING YOURSELF

**What is your
name?**

**Where were
you born?**



**Where are
you currently
studying?**

**When is your
birthday?**

EDUCATION



**What are you
studying?**

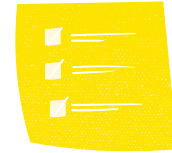
**What is your
favourite class?**

A large, empty speech bubble with a teal outline and rounded corners, positioned to the right of the first two questions. It is intended for the student to write their answers to the questions.A large, empty speech bubble with a teal outline and rounded corners, positioned to the left of the last two questions. It is intended for the student to write their answers to the questions.

**Where do you
like to study?**

**What do you
think of USYD?**

WORK LIFE



**Do you have
a job?**

**Do you enjoy
your job?**



I want to be a...

**(different
occupations)**



FIND OUT ABOUT...

What are your hobbies?



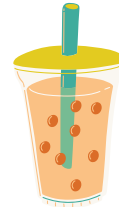
1

2

3

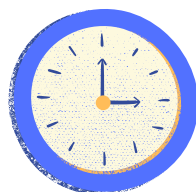
Counting to 10

Ordering food and drinks



Different places (e.g. restaurants, post office, park, shops)

Transportation



What is the time?