

| Integrating sustainable preferences
| into MiFID II



Table of contents

03	Foreword
04	Summary
06	Introduction: what's the overall context?
08	What's changing?
08	When?
09	How?
10	Alignment with Taxonomy
12	Alignment with the Sustainable Finance Disclosure Regulation (SFDR)
14	Alignment with the Principal Adverse Sustainability Impacts (PASI)
16	Points of attention for the informed investor
18	Conclusion
20	Contact

Bank Degroof Petercam SA, with registered office at Rue de l'Industrie 44, 1040 Brussels, Belgium, ("Degroof Petercam") is responsible for the production and distribution of this document. Bank Degroof Petercam is authorised and supervised by the National Bank of Belgium, Boulevard de Berlaimont 14, 1000 Brussels, and by the Financial Services and Markets Authority (FSMA), rue du Congrès/Congresstraat 12-14, 1000 Brussels, for the protection of investors and consumers.

Responsible editor: Sabine Caudron. Editorial date: August 2022.

Legal address: Bank Degroof Petercam nv, Nijverheidsstraat 44, 1040 Brussels.

VAT: BE 0403.212.172 (Company Register Brussels) - FSMA 040460 A.

Foreword

The energy transition and the myriad environmental and social challenges we face mean that an increasing number of investors are considering factors other than purely financial ones when making their decisions.

At Degroof Petercam, this approach fits into a long tradition of **sustainable** investment. Our mission as a wealth manager across generations has led us to advocate a long-term perspective for 150 years.

Every challenge can also create opportunities, and brings **prosperity** to those who embrace them. Combining prosperity with sustainability creates an impulse for your investments.

We integrate environmental, social, and governance criteria into our analysis, whether concerning the products we offer or the management we carry out on behalf of our clients. We are also trying to contribute to a better society by reserving part of our investments for companies whose activities impact the environment and social issues.

As you will read in this brochure, by amending the MiFID II Regulation, the European authorities now allow you to express yourself on these crucial matters. Accordingly, you are invited to express **your sustainable investment preferences** in the context of the management of your portfolio or the investment advice you receive.

Expressing your preferences begins with understanding sustainability concepts and how we define and translate them into our investment policy. That is the purpose of this brochure.

And of course, as with other topics, you can rely on your private banker to guide you through this process.



Sabine Caudron
Head of Private Banking

My preferences in terms of sustainability?

As of August 2, 2022, new European rules regarding sustainable finance came into effect for investments executed under investment advice or discretionary portfolio management.

The goal is to create a more sustainable society, and as an investor, you have the opportunity to participate in this transition actively.

Following changes to the rules of the European MiFID II Directive, you can now express your views on sustainability within your investments. Via a new questionnaire, you will be asked to determine your preferences regarding sustainable investments by answering several questions.

Bank Degroof Petercam will consider these preferences in its discretionary portfolio management and investment advice services.

MiFID II: MiFID stands for "Markets in Financial Instruments Directive." This regulation came into force in 2007. The MiFID II Directive, which complements this regulation, came into force in 2018.

MiFID II consists of strengthening the European rules as follows:



For investors:

- ✓ by providing them with better protection thanks to stricter rules on conflicts of interest;
- ✓ more transparent information on investment services to be provided by investment firms.



On the stock markets:

- ✓ by increasing investor protection and strengthening the rules of conduct and competition in the trading and settlement of financial instruments;
- ✓ by increasing transparency and supervision of financial markets.

The purpose of this brochure is to provide you with more information on the challenges associated with sustainable investments, and their various practical concepts that are also linked to each other. The aim is for you to be able to determine your preferences regarding sustainability in an informed manner.

Indeed, you have the possibility, if you wish, to express your preferences according to different concepts:

- ✓ Alignment with Taxonomy.
- ✓ Sustainability based on SFDR.
- ✓ Taking into account the main negative indicators on sustainability 'Principal Adverse Sustainability Impacts' (PASI).

Are you not familiar with these technical terms? We explain everything in more detail in this brochure so that you can make the best choices for your future investments.



Introduction: What's the overall context?

Sustainability and the multitude of environmental and social challenges concern us all. Not only in our daily lives as consumers, but also as investors.

That's why we have assumed responsibility at the bank level to take extra-financial factors gradually into account in our investment policies. This action ensures that we are not complicit in controversial conducts or sectors and can promote best practices and beneficial activities, ensuring positive input to society. In fact, we firmly believe that sustainable investment is the way forward to reduce risk, anticipate tomorrow's successes, and contribute to a better society.

Beyond this internal commitment, there is also an external willingness on the part of governments and the European Union, which in recent years have set ambitious targets, in particular to become climate-neutral by 2050. An action plan has been drawn up with different regulations destined for the various stakeholders to achieve these goals and redirect capital flows towards investments that allow more sustainable growth.

A wave of new regulatory texts in this area has been progressively adopted in recent years:

- ✔ First, for the **companies**, through new reporting requirements for extra-financial data such as their carbon footprint or their water use (CSRD Regulation¹).
- ✔ Second, for **investment companies** like Degroof Petercam to clarify which underlying activities contribute to the achievement of Europe's environmental goals (Taxonomy Regulation²) and to what extent do they consider extra-financial factors in the investment products they offer to clients (SFDR³).
- ✔ Finally, for **individual investors**, enabling them to express their sustainability preferences (Delegated acts amending MiFID II Regulation⁴).

¹ CSRD (Corporate Sustainability Reporting Directive): a European directive that establishes new standards and obligations for non-financial reporting for major European companies.

² Taxonomy: European regulation which lays down criteria for the selection of environmentally sustainable economic activities.

³ SFDR (Sustainable Finance Disclosure Regulation): disclosure requirements for sustainability-related data and policies at an organization, services and product levels to standardize sustainability performance.

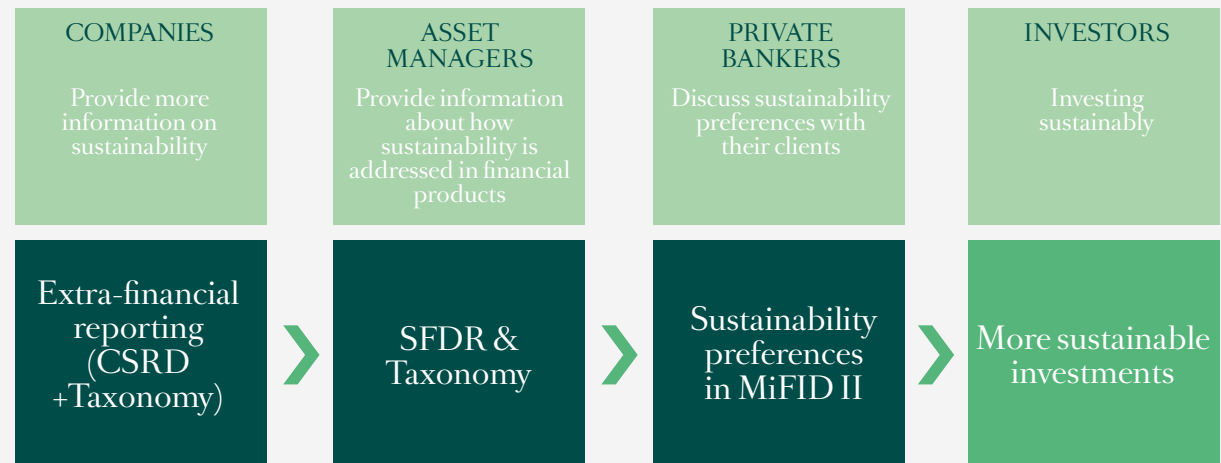
⁴ MiFID II (Markets in Financial Instruments Directive): a European directive that sets out the rules financial institutions are required to follow when offering or advising on investment products.

Introduction

This latest regulation, which concerns you directly, is now adding a new layer to the MiFID questionnaire you know already. These are now supplemented by questions that allow you to **express your preferences in terms of sustainable investments**.

Through these initiatives, the European Union is building a common reporting framework and ensuring that companies disclose reliable and comparable extra-financial information to help investors evaluate extra-financial performance of companies and redirect investments towards activities that enable sustainable prosperity.

All these regulations are therefore interlinked and feed into each other.



What's **changing**?

The European Union requires financial institutions offering investment services to take sustainability risks into account in their organization and also to consider the sustainability preferences of the client within their suitability process.

Investment firms must, therefore, in addition to the traditional elements of financial capacity, knowledge, and experience, also collect information on their clients' sustainability preferences. The goal is to ensure that the instruments advised or used within the discretionary management of the portfolio are aligned with sustainability preferences (or lack thereof).

Moreover, the new rules stipulate that only "sustainable investment instruments" can be used to answer investors' specific sustainability preferences. In this sense, three types of these instruments have been defined (we discuss them in more detail in this brochure).

When?

I am a new client

When opening a new investment portfolio, the Bank will define a profile with you based on some questions (the investment profile), which will now be supplemented with questions about your preferences linked to the theme of sustainability.

I am already a client

In this case, your private banker or your usual contact person will invite you to complete the sustainability questionnaire with them during the revision of your MiFID investment profile. Suppose you are already a client and want to open a new investment portfolio. In that case, we will immediately ask you about your sustainability preferences so that the proposed investments align with your sustainable investment objectives. These objectives may vary from portfolio to portfolio.

¹ For clients who use «execution only» services (execution order on your initiative, without advice), nothing will change.

How?

As an investor, you can determine your sustainability preferences by answering some questions about your interests in various sustainability issues. The aim is to ensure that the financial instruments recommended to you or purchased under a management mandate are suitable for you taking into account these preferences.

The existing MiFID questionnaire (PFI²) will not change. Your sustainability preferences will be determined through a new questionnaire.

You must know that you can change your sustainability preferences at any time through your regular contact person.

As part of your onboarding or your re-profiling, you should answer at least the first question of the questionnaire.

“Do you have any sustainability preferences for your portfolio that should be taken into account?”

- **Answering no to this question** means that you have no sustainability preferences for the portfolio covered by this questionnaire. Then you will be considered a “neutral investor,” meaning that your services do not change, and you can use both sustainable and unsustainable instruments in this portfolio.
- **If you answer yes to this question**, it means that you have sustainability preferences, and you want to integrate them into your investment portfolio. In this case, the Bank will analyze them based on more detailed additional questions.

In line with our portfolio approach, you first have the option to determine the minimum percentage you want to invest sustainably within the portfolio.

THEN, YOU CAN PASS ON YOUR SPECIFIC PREFERENCES REGARDING THE FINANCIAL INSTRUMENTS THEMSELVES:

- ✔ Alignment with Taxonomy.
- ✔ Sustainability based on SFDR.
- ✔ Considering the main negative sustainability indicators ‘Principal Adverse Sustainability Impacts’ (PASIs).

Bank Degroof Petercam has also developed an ‘in-house’ methodology for clients who have sustainability preferences but do not wish to express themselves at the level of specific instruments (Taxonomy, SFDR, PASI).

² Personal and Financial Inventory

Alignment with Taxonomy

The European Taxonomy Project aims to establish a classification system for economic business activities that are considered 'sustainable' from an environmental or social perspective, with a strong emphasis for the time being on climate change mitigation and adaptation.

An activity can be classified as 'sustainable' in the Taxonomy if it contributes substantially to one of the six environmental objectives (including by meeting technical screening criteria), without causing significant harm to any of the other five objectives. In addition, an activity must also meet basic social criteria to be considered 'sustainable' (alignment with OECD³ guidelines).



The 6 sustainable goals according to the Taxonomy:



Climate change mitigation



Climate change adaptation



The sustainable use and protection of water and marine resources



The transition to a circular economy



Pollution prevention and control



The protection and restoration of biodiversity and ecosystems

³ The Organisation for Economic Co-operation and Development

Alignment with Taxonomy

If your sustainability preferences **as an investor** align with the Taxonomy, then you are investing in the activities of a company qualified as sustainable. The reason is that its activities contribute materially to one of the sustainability objectives, do not detract from another objective, and are conducted in compliance with minimum guarantees (social or governance). The aim is, therefore, to make a positive contribution.

Specifically, a company will have to verify that its activities are included in the Taxonomy List (however, the provisionally listed activities are very specific and represent only a small part of the real economy) and/or meet all the set conditions. Only activities that pass all the stages can be used to calculate the company's alignment rate with the Taxonomy.

As for you as an investor, you can determine the level of alignment with the Taxonomy you want, and then they are compared: if the level of alignment with the Taxonomy of a company is lower than your expressed preferences, then the investment is not suitable for you.

Important to know:

The Taxonomy story is still at the beginning:

- ✓ Only two environmental objectives (climate change mitigation and adaptation) have all the criteria to assess an activity completed; the other four are expected to be completed later in 2023, so very few activities can be considered "aligned with the Taxonomy".
- ✓ The inclusion of nuclear power and gas remains controversial.
- ✓ The Social Taxonomy is still in the consultation phase and is not yet final.
- ✓ Companies are not yet required to report Taxonomy-related information, so there is currently important information missing to start determining the Taxonomy level of a company or business.
- ✓ Given all these points, the current impact of Taxonomy on the market is limited for now, but in the coming years, we expect this element will undoubtedly increase in importance.



Alignment with the Sustainable Finance Disclosure Regulation (SFDR)

Through its Sustainable Finance Disclosure Regulation (SFDR), which came into force on March 10, 2021, the European Union has introduced a set of binding rules on transparency of sustainability risk integration and terminology.

SFDR defines **sustainable investment** as “an investment in an economic activity that contributes to an environmental objective, or an investment in an economic activity that contributes to a social objective, provided that such investments do not cause significant harm to any of these objectives and that the companies invested in apply good governance practices”.

The SFDR regulation and recent market developments also introduced new typologies for funds and portfolios under management according to their intrinsic ESG or sustainable characteristics:

Article 6	Article 8	Article 8+	Article 9
Neutral products	ESG Products	ESG product with partial sustainable investments	Sustainable products
No ESG integration or sustainability features.	Products that incorporate ESG criteria based on predefined and established principles.	Products that incorporate ESG criteria based on predefined and established principles and realize certain sustainable investments but do not pursue a sustainable objective.	Products that aim to have a lasting impact and pursue genuine sustainability objectives. Based on the most recent EU guidelines an Article 9 funds will contain almost exclusively sustainable investments.

Sustainable investment therefore goes beyond ESG investment, as this approach not only integrates ESG characteristics but also seeks to have a tangible positive impact.

Do the concepts of investments in line with the Taxonomy and sustainable investments according to SFDR seem identical to you? The two concepts have similar objectives that seek positive environmental and/or social impacts. However, the methodology for identifying companies and financial products that contribute to these objectives differs. With Taxonomy, we evolve within a technical framework, precisely defined by European regulations where strict conditions apply. With sustainability, according to SFDR, financial institutions have more freedom in the analysis method they want to use, provided they do so in complete transparency. Transparency, then, is the primary goal of this SFDR regulation. Below you will find more information.

Suppose you choose to invest sustainably as an investor according to SFDR. In that case, you invest in financial instruments that contribute to an environmental and social objective and respect good governance practices. The goal is, therefore, to make a positive contribution.

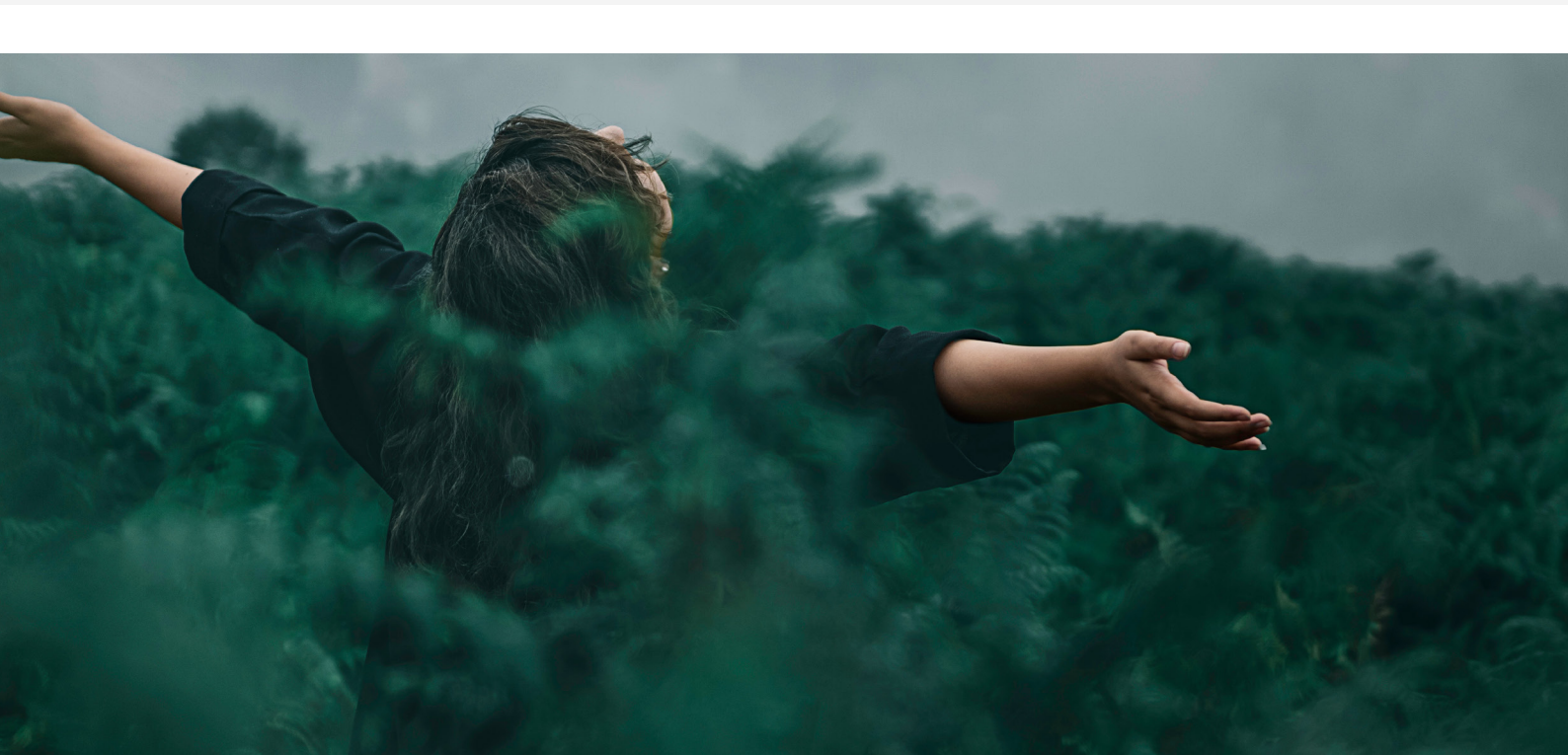
Alignment with the Sustainable Finance Disclosure Regulation (SFDR)

Important to know:

There is currently no harmonized definition or rating methodology at the EU level to determine what, according to SFDR, constitutes a sustainable investment.

This situation means that each fund or portfolio manager is free to develop its valuation methodology, leading to differences between players in the financial world.

However, we see a market trend to use the SDG (Sustainable Development Goals) as a reference value. Therefore, for the time being, this is also the methodology used by Bank Degroof Petercam in this area. The SDG, or the seventeen Sustainable Development Goals, were adopted in 2015 by the United Nations member states to eradicate poverty, fight inequality, ensure access to water and education, reduce major pandemics, and safeguard the planet.



Alignment with the Principal Adverse Sustainability Impacts (PASl)

Another key concept defined by SFDR is that of Principal Adverse Sustainability Impacts (PASl).

It concerns a list of indicators defined by Europe that allows investment funds to assess and manage the negative impact of their investment decisions on environmental issues relating to workers, respect for human rights, and the fight against active and passive corruption.

The integration of PASl means that the fund aims to limit its negative impact on the selected themes by monitoring the indicators and reducing their impact.

CLIMATE AND OTHER ENVIRONMENT-RELATED INDICATORS	
ADVERSE SUSTAINABILITY INDICATOR	
GHG emissions	<ol style="list-style-type: none">1. GHG emissions2. Carbon footprint3. GHG intensity of investee companies4. Exposure to companies active in the fossil fuel sector5. Share of non-renewable energy consumption and production6. Energy consumption intensity per high impact climate sector
Biodiversity	<ol style="list-style-type: none">7. Activities negatively affecting biodiversity-sensitive areas
Water	<ol style="list-style-type: none">8. Emissions to water
Waste	<ol style="list-style-type: none">9. Hazardous waste ratio
SOCIAL AND EMPLOYEE, RESPECT FOR HUMAN RIGHTS, ANTI-CORRUPTION AND ANTI-BRIBERY MATTERS	
ADVERSE SUSTAINABILITY INDICATOR	
Social and employee matters	<ol style="list-style-type: none">10. Violations of UN Global Compact principles and OECD Guidelines for Multinational Enterprises11. Lack of processes and compliance mechanisms to monitor compliance with UN Global Compact principles and OECD Guidelines for Multinational Enterprises12. Unadjusted gender pay gap13. Board gender diversity14. Exposure to controversial weapons

Suppose you, **as an investor**, choose to invest and incorporate the PASl. In that case, it means you wish to limit your impact in a selected area by monitoring it and trying to reduce the level of impact. Developing PASl is, therefore, relevant if you wish to limit your future "investment footprint" for some themes.

Alignment with the Principal Adverse Sustainability Impacts (PASI)

Important to know:

European legislation does not prescribe how financial products should take into account PASI.

However, this can be done in various ways, such as monitoring indicators, setting a threshold (think best-in-class score for indicators), applying exclusions related to indicators, engaging with issuers on indicators, and establishing a voting policy based on indicators or a combination of different methods.

At present, many funds have only just begun to announce which PASIs they will include and have not yet determined which quantitative criteria they will use. As a result, assessing how the fund industry will develop this element is complex.



Points of attention for the **informed investor**

Determining **your sustainability preferences** is not optional. Indeed, it must be done in an objective and considered manner, as it can have important implications for your portfolio and its configuration.

➤ **LIMITING THE INVESTMENT UNIVERSE**

The higher or more demanding your sustainability preferences are, the more limited your investment universe will be. After all, only the most sustainable instruments can then be used, and given the current state of the market, you will have a more limited choice. The integration of sustainable criteria into the advisory structure or management of your portfolio may therefore limit your investment universe and exclude some specific -more polluting- sectors.

➤ **CONCENTRATION RISK**

Only a limited number of products on the market incorporate sustainability criteria, which can lead investors with very strong sustainability preferences to invest in the same instruments. Consequently, we could potentially face concentration risk in individual lines or funds due to the limited selection of instruments available.

➤ **ADAPTATION OF THE EXISTING PORTFOLIO**

As sustainability preferences are part of the suitability process under **MiFID II Regulation**, high sustainability preferences may also mean that your existing portfolio needs to be adjusted to meet your preferences. These adjustments may result in arbitrage transactions, which may result in costs, charges, or taxes. However, the Bank will make these adjustments in stages, considering the associated costs, and always acting in your best interests as an investor.



Points of attention for the informed investor

Practical concern:

Due to the lack of qualitative data available in the market on investee companies and products, as well as regulatory uncertainty on some implementation elements, Bank Degroef Petercam is currently not in a position to already use your specific sustainability preferences at the instrument level in the suitability test.

Nevertheless, you can communicate them now, and we will integrate them later into our advisory or management services. However, the Bank is already collecting the specific preferences of clients who want them, and it will contact clients when it can use them.

To facilitate the integration of sustainability preferences, Bank Degroef Petercam has also developed its reference framework defining what constitutes a “sustainable financial instrument”.

In summary, the Bank considers the following instruments to be sustainable in terms of suitability requirements:

- ✔ Issuer of which a minimum of the income is derived from sustainable economic activities as defined in the European Taxonomy Regulation, and/or
- ✔ The issuer of the instrument or the instrument itself (fund) contributes positively to the Sustainable Development Goals (SDG) defined by the United Nations and/or
- ✔ The instrument is aligned with the principles of sustainable bonds (green, social, or transition).

Through the specific questionnaire, you have the opportunity to align your sustainability preferences with the Bank's methodology.



Conclusion

- 1 As an investor, since August 2, 2022, you can express your views on sustainability regarding your investments through a new questionnaire. You are therefore invited to express your preferences regarding sustainable investment by answering several questions.
- 2 Bank Degroof Petercam will consider these preferences in its discretionary portfolio management and investment advice services.
- 3 Three concepts can be used to define sustainable investments:
 - ✔ Aligned with Taxonomy: substantial contribution to at least one of the sustainability objectives defined by the European Union.
 - ✔ Sustainable according to SFDR: investments in companies that contribute to environmental or social objectives. We use the Sustainable Development Goals as a framework for estimating this contribution.
 - ✔ PASI integration: list of indicators defined at the European level and used to assess the negative impact of investments on environmental and social issues.
- 4 Sustainable finance is nevertheless still under construction. Currently, very little data is available on the market, and several regulatory uncertainties remain.
- 5 Sustainability is here to stay and will influence how we invest in the future.
- 6 You have a role to play if you wish. If you have any questions about sustainability, don't hesitate to get in touch with your private banker or your usual contact.



Contact

ANTWERP

Van Putlei 33 - 2018 **Antwerpen**

Business center d'Offiz - Parklaan 46 - 2300 **Turnhout**

pbantwerpen@degroofpetercam.com

T +32 3 233 88 48

pbturnhout@degroofpetercam.com

T +32 14 24 69 40

BRUSSELS

Rue de l'Industrie 44 - 1040 **Brussels**

Avenue des Aubépines 1 - 1180 **Uccle**

Chaussée de Malines 455 - 1950 **Kraainem**

pbbru@degroofpetercam.com

T +32 2 287 91 11

pb.brusouth@degroofpetercam.com

T +32 2 662 88 40

pb.brueast@degroofpetercam.com

T +32 2 662 89 20

EAST FLANDERS

Moutstraat 68 bus 701 - 9000 **Gent**

pbgent@degroofpetercam.com

T +32 9 266 13 66

FLEMISH BRABANT

Mgr. Ladeuzeplein 29 - 3000 **Leuven**

pbleuven@degroofpetercam.com

T +32 16 24 29 50

Neerhoflaan 8/0 - 1780 **Wemmel**

pbwemmel@degroofpetercam.com

T +32 2 204 49 20

HAINAUT

Rue du Petit Piersoulx 1 - 6041 **Gosselies**

pbhainaut@degroofpetercam.com

T +32 71 32 18 25

Chaussée de Tournai 52 - 7520 **Ramegnies-Chin**

pbhainaut@degroofpetercam.com

T +32 71 32 18 25

LIÈGE

Boulevard Gustave Kleyer 108 - 4000 **Liège**

pbliege@degroofpetercam.com

T +32 4 252 00 28

LIMBURG

Runkstersteenweg 356 - 3500 **Hasselt**

pbhasselt@degroofpetercam.com

T +32 11 77 14 60

NAMUR

Avenue de la Plante 20 - 5000 **Namur**

pbnamur@degroofpetercam.com

T +32 81 42 00 21

WALLOON BRABANT

Les Collines de Wavre - Avenue Einstein 16 - 1300 **Wavre**

pbwavre@degroofpetercam.com

T +32 10 24 12 22

WEST FLANDERS

President Kennedypark 8 - 8500 **Kortrijk**

pbkortrijk@degroofpetercam.com

T +32 56 26 54 00

Kalvekeetdijk 179 Bus 3 - 8300 **Knokke-Heist**

pbknokke@degroofpetercam.com

T +32 50 63 23 70

WEBSITES

degroofpetercam.com

funds.degroofpetercam.com

LINKEDIN

[linkedin.com/company/
degroofpetercam](https://linkedin.com/company/degroofpetercam)



YOUTUBE

[youtube.com/
degroofpetercam](https://youtube.com/degroofpetercam)



TWITTER

[@degroofpetercam](https://twitter.com/degroofpetercam)



INSTAGRAM

[@degroofpetercam](https://instagram.com/degroofpetercam)



FACEBOOK

[facebook.com/
degroofpetercam](https://facebook.com/degroofpetercam)

