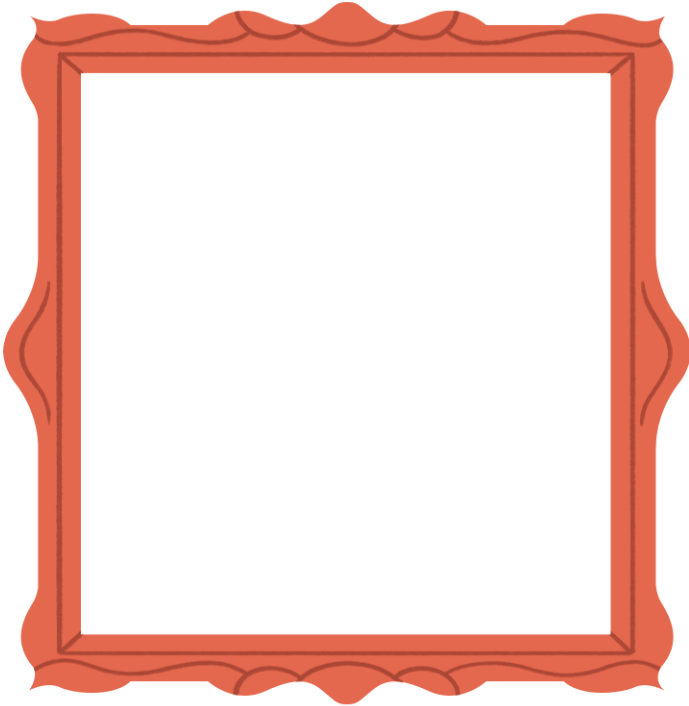




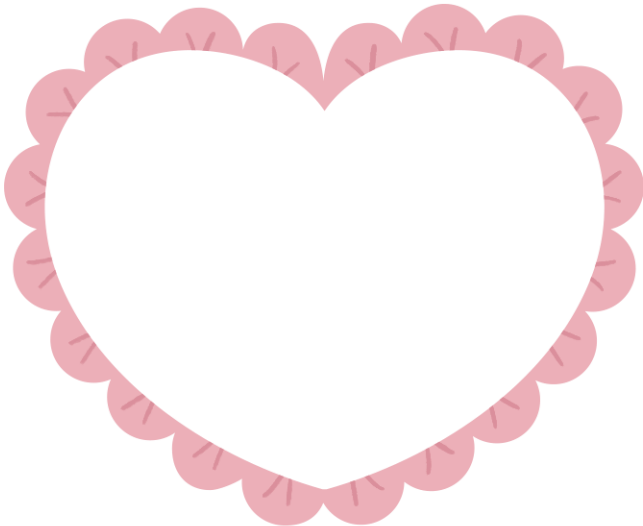


Create **YOUR WORLD**

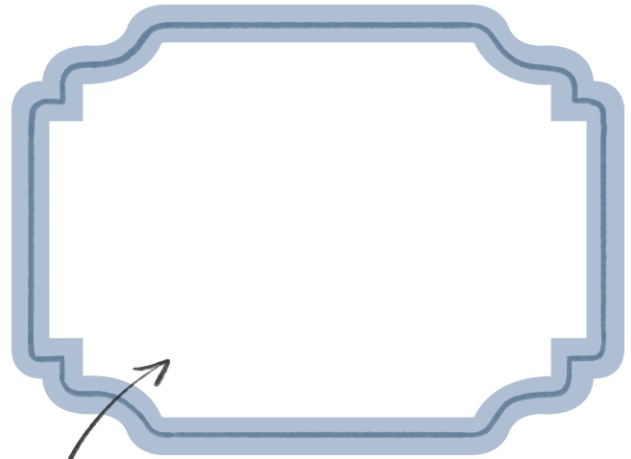
Every princess has a world of their own
and now it's time to share yours!



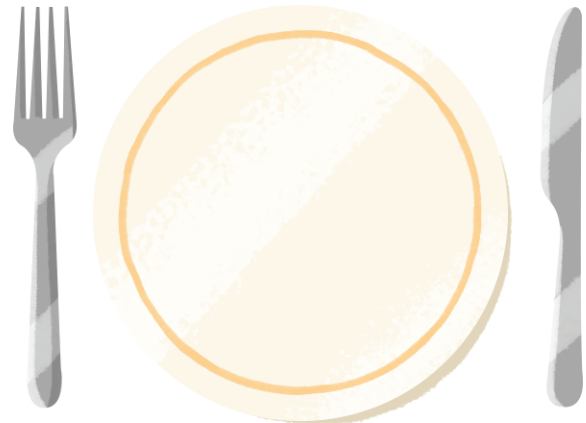
Hello, my name is _____



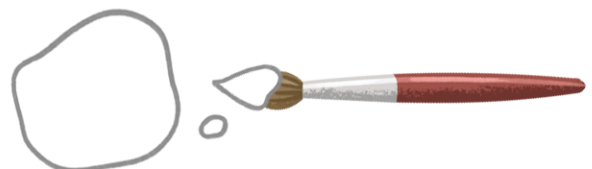
I love to _____



This is my best friend _____



My favorite dish is _____



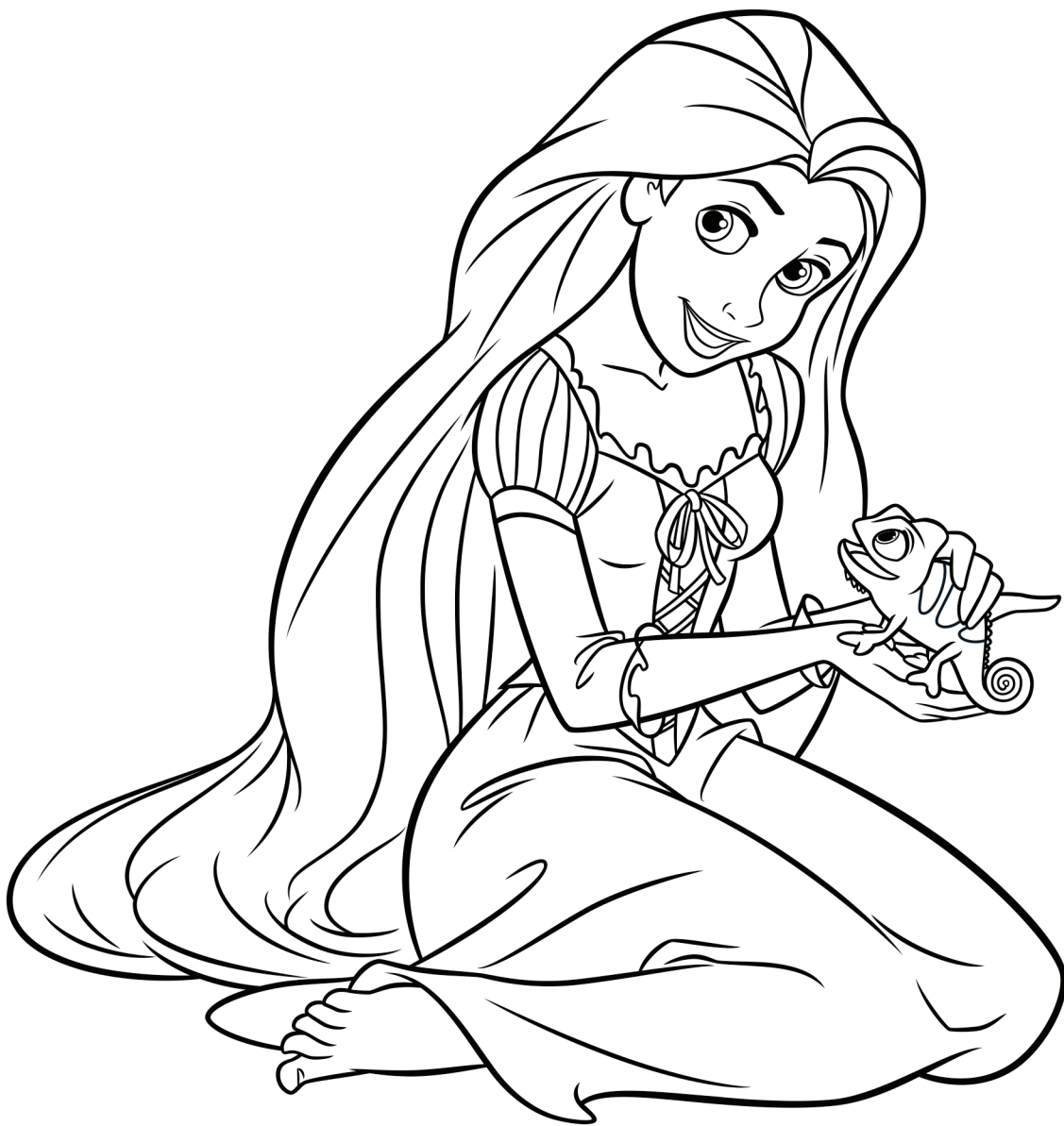
My favorite color is _____



Rapunzel

CHATS WITH PASCAL

Pascal has always been a great friend to Rapunzel.
Fill in the drawing with colors that you
think symbolize their friendship.





Ariel

MAKE YOUR OWN BUBBLES

Have a special adventure under the sea
with your own magic unpopable bubble creations!



Ask an adult for help

SUPPLIES:

- 1420 ml Water
- 237 ml Liquid Dish Soap
- 59 ml Corn Syrup

DIRECTIONS

1. Put 1420 ml water into a container.
2. Slowly stir in liquid dish soap little by little.
3. Mix the corn syrup into the solution.
4. Let the solution sit overnight.
5. Dip a bubble wand or straw into the solution and blow your own bubbles.





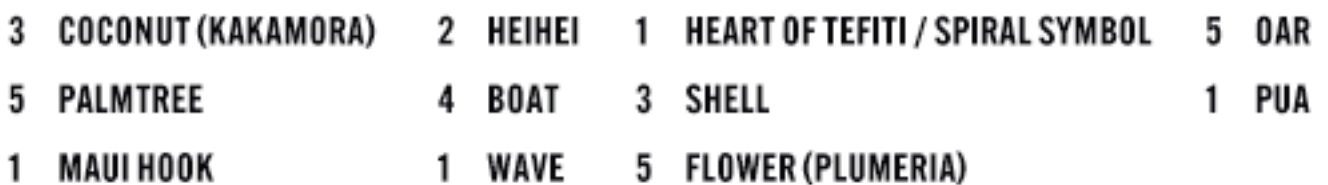
Jasmine

AND HER MAGIC CARPET

Jasmine can travel the world on her magic carpet. Use vivid colors to fill in the drawing.



Dive into a new challenge. Color and count each of the illustrations from around Motunui.





Tiana

ENCHANTING PALACE PARTY

Tiana is getting ready for an enchanting party at the palace. Finish her dress by filling in the drawing with your most used colors.

