

LM_API platform

25/11/2018

Orchestrator DEMO

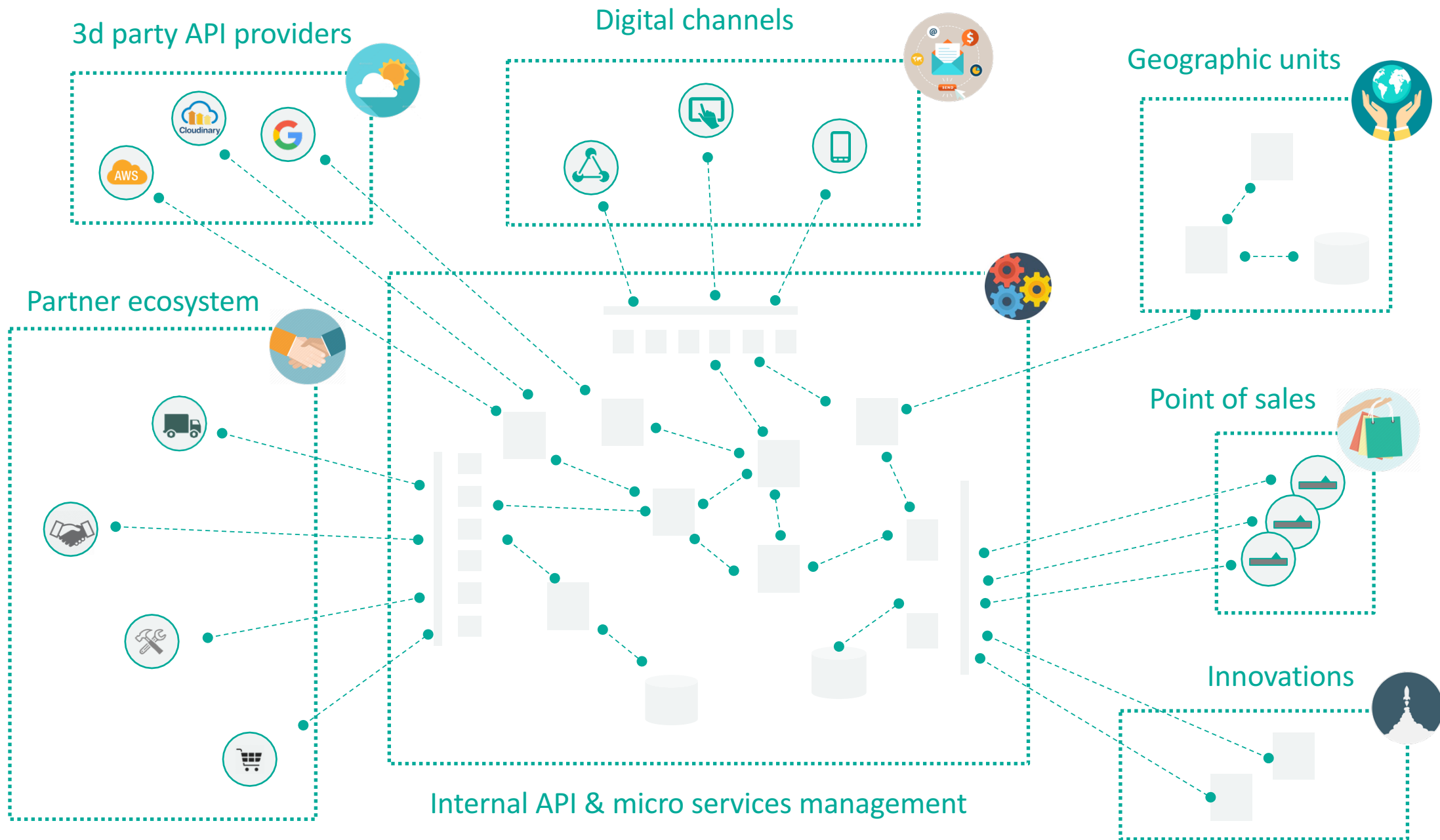
Alexey Matveev

- LM Orchestrator core developer

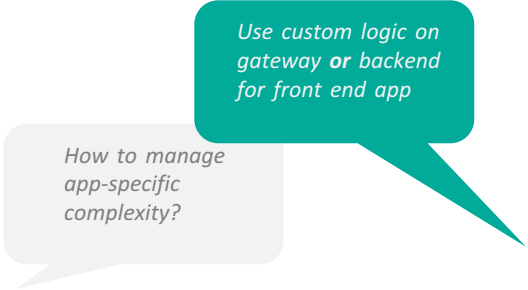


API ecosystem

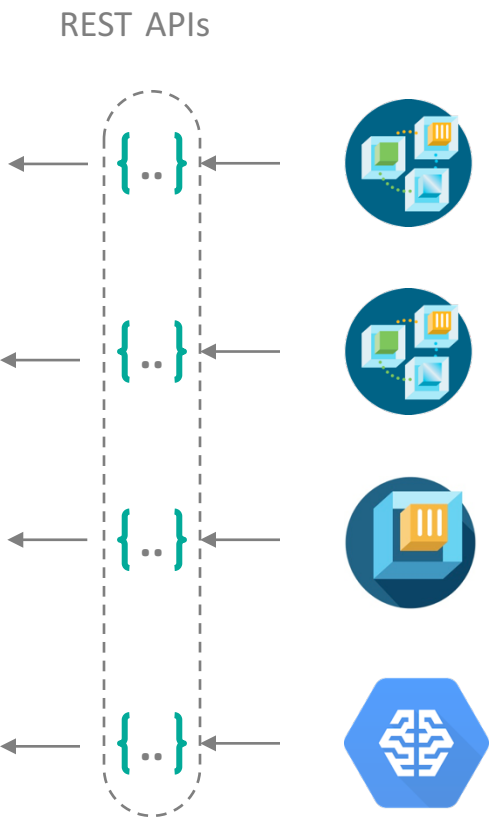
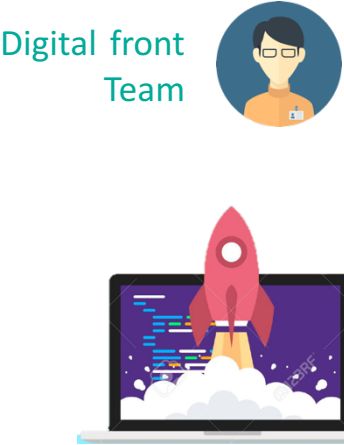
API platform is a glue to connect all the gears of business ecosystem



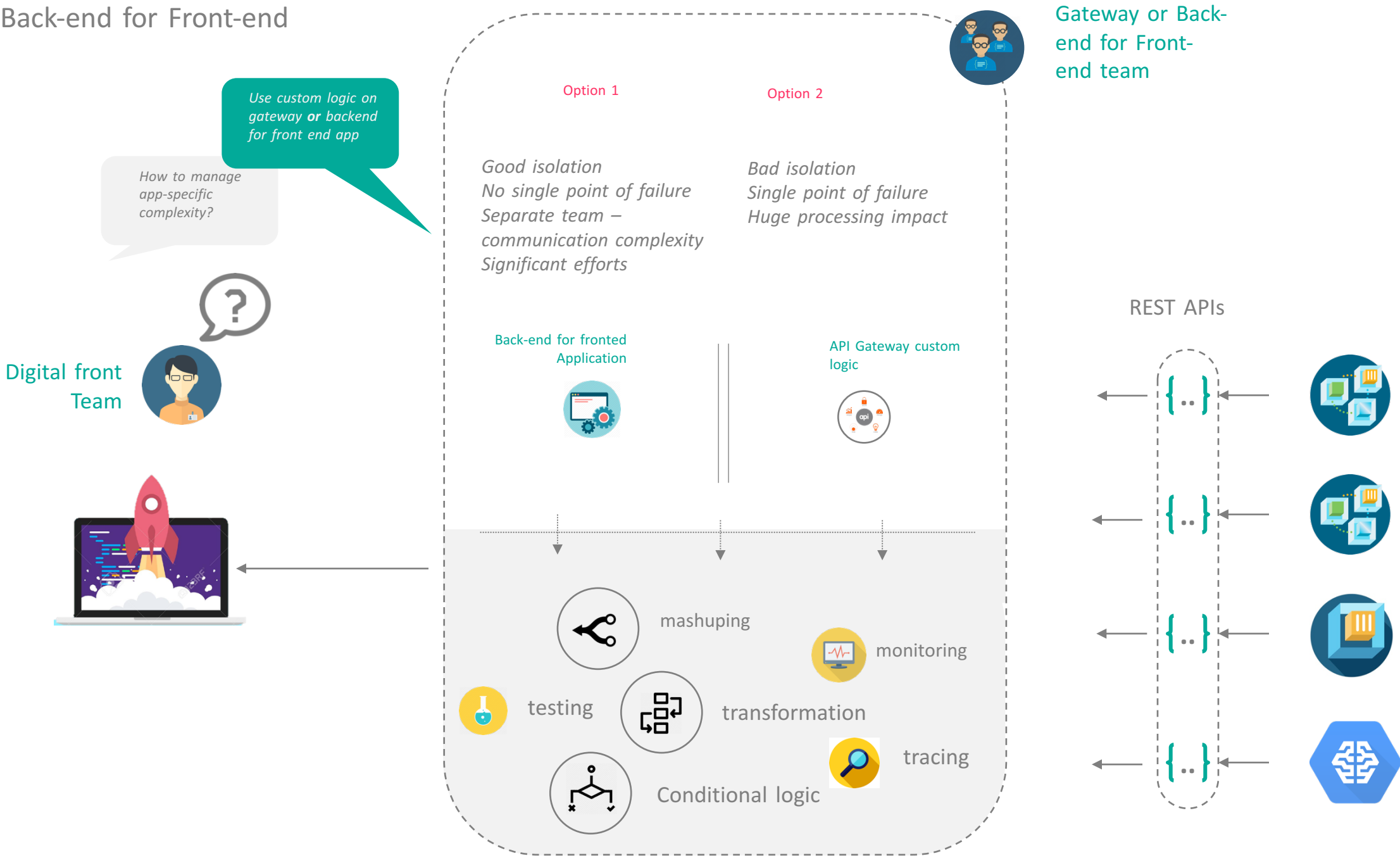
Back-end for Front-end



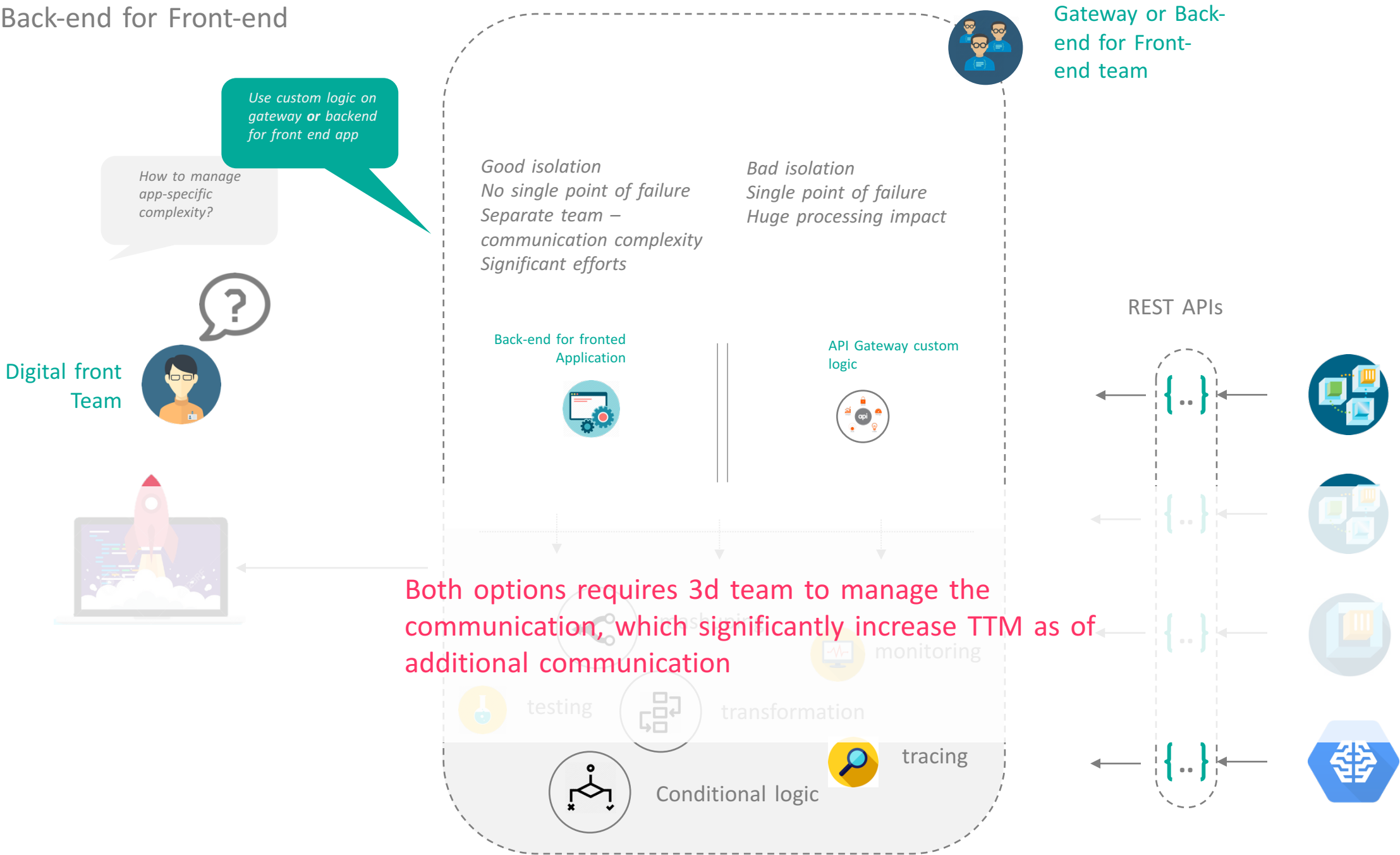
Build new digital product based on company data and processes, realized via huge set of services & microservices.



Back-end for Front-end



Back-end for Front-end



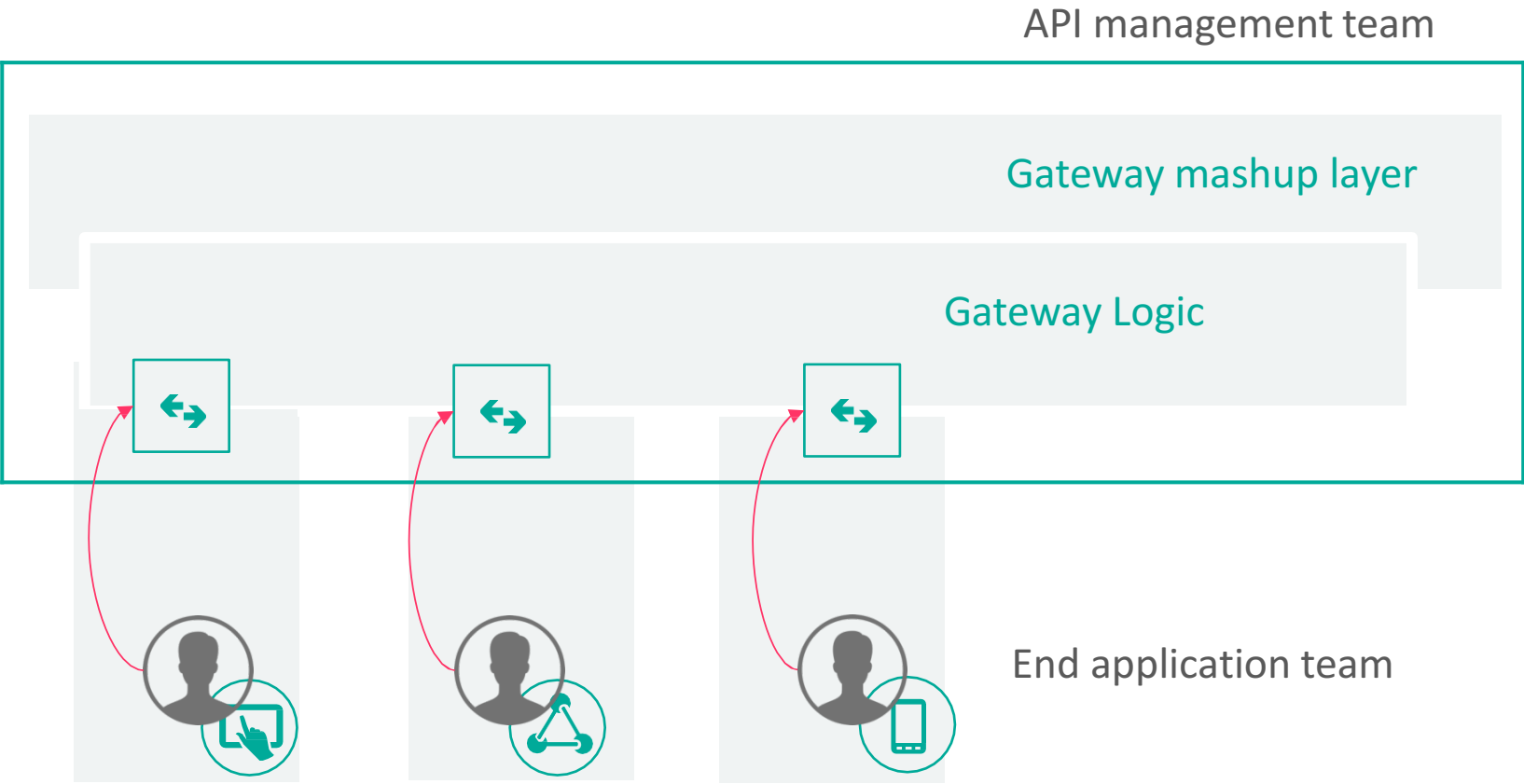
Experience – based API pattern

What if front-end team will be able to manage their API experience by themselves?



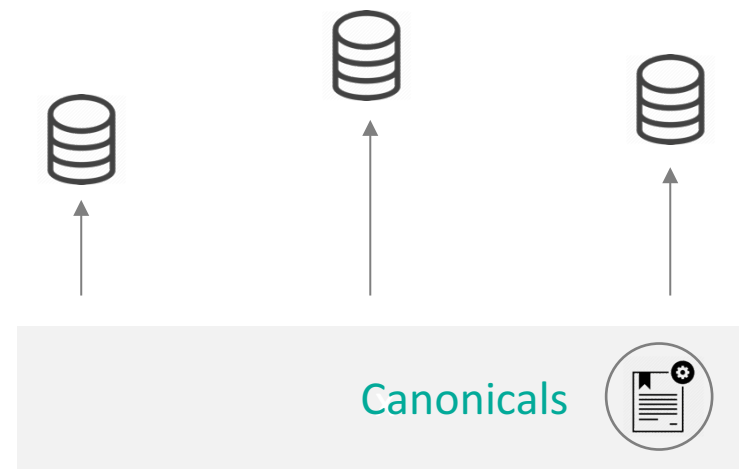
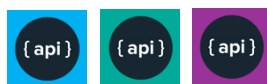
- Use application or device specific APIs
- Delegate parts of API management to project teams
- Provide single platform control and evaluation point

- 1) Delegate API mashup, transformation and presentation logic development to project teams
- 2) API team to own platform itself, control consistency, quality and consistency of micro-gateway logic and increase development experience



Canonical & Experience APIs

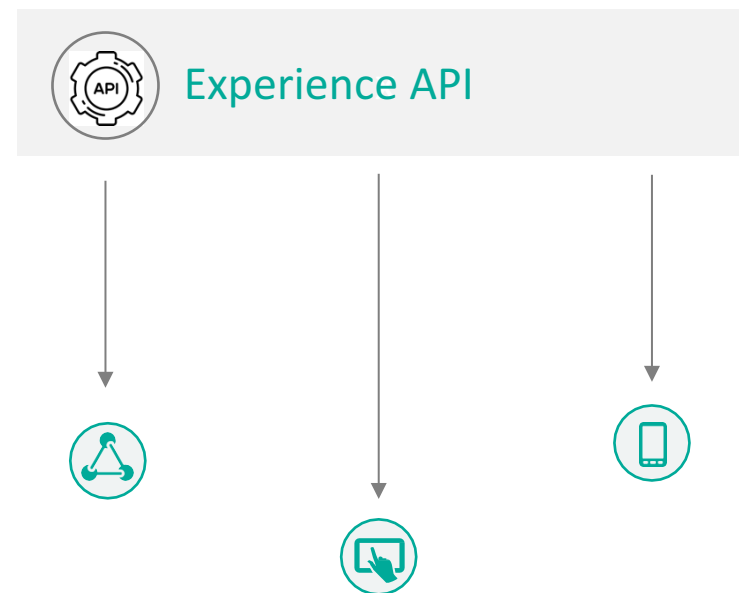
Publication of the set of well-designed API for optimal consumption



Reach the balance between canonicals and app/device specific API agility

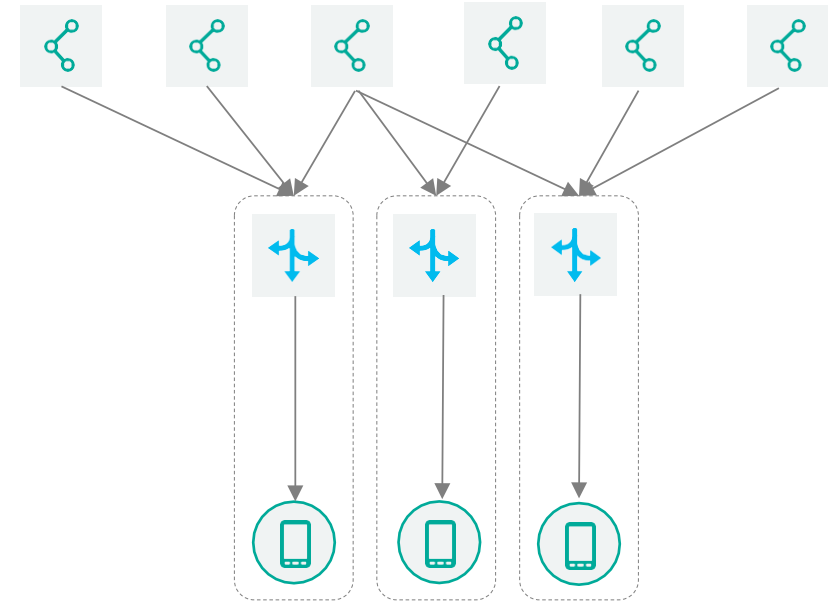


Provide the ability to channels teams to configure required api-experience



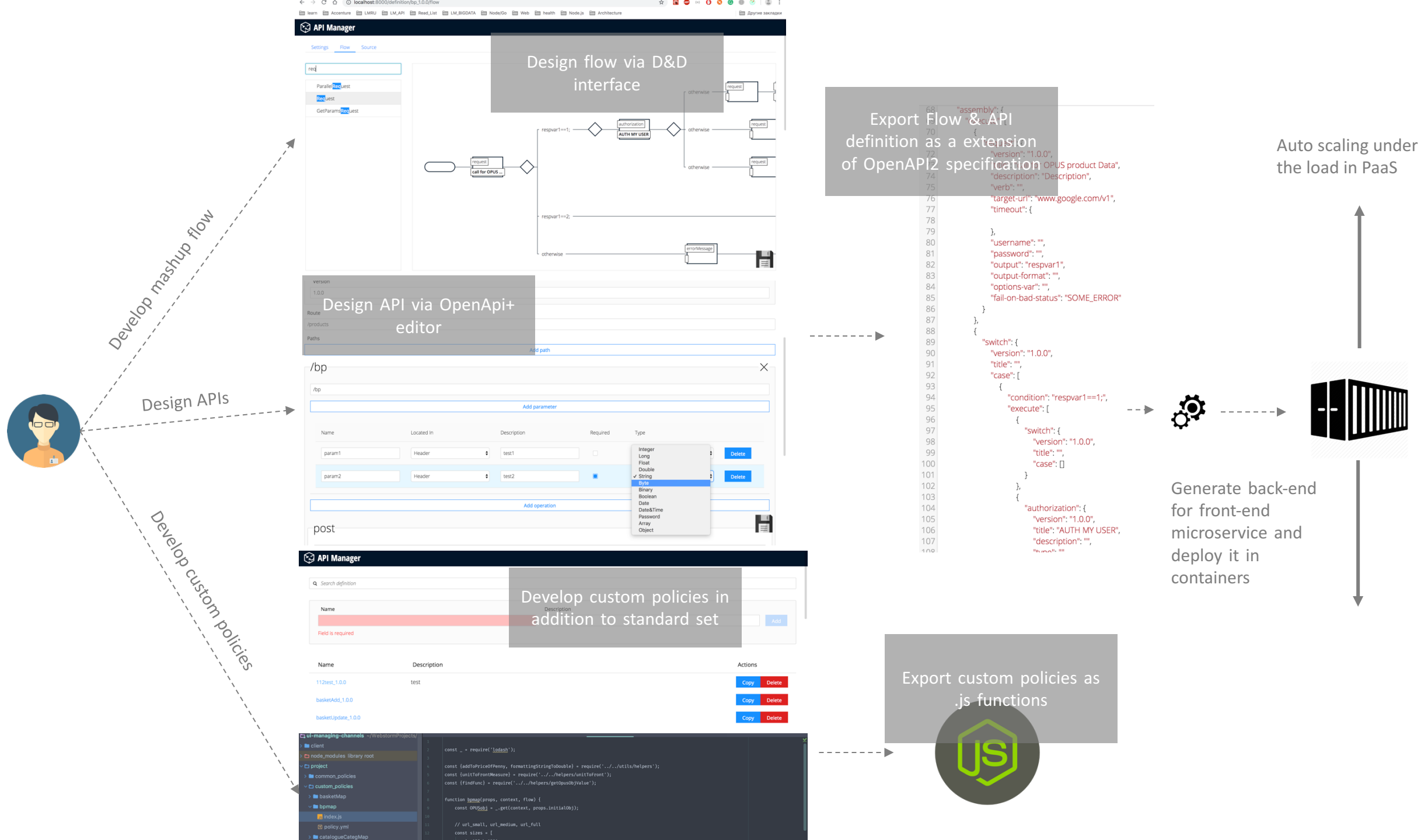
Orchestrator solution value proposition:

- 1) To provide flexible way to create and manage API's exposition to support innovation layer with accelerated TTM and personalization capabilities and avoid performance, security and stability bottlenecks by strict channels isolation.
- 2) Propose the way to manage the micro services assets to increase control and accelerate TTM in context of intensive usage, development and evolution

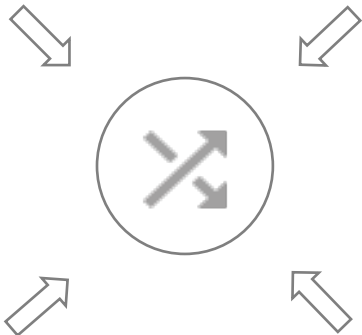
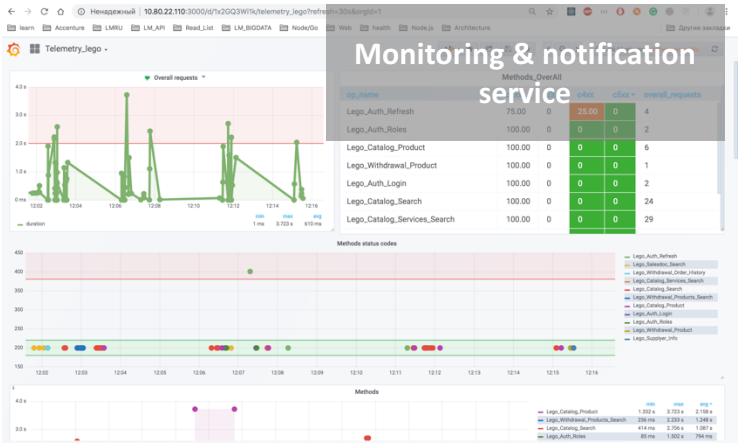
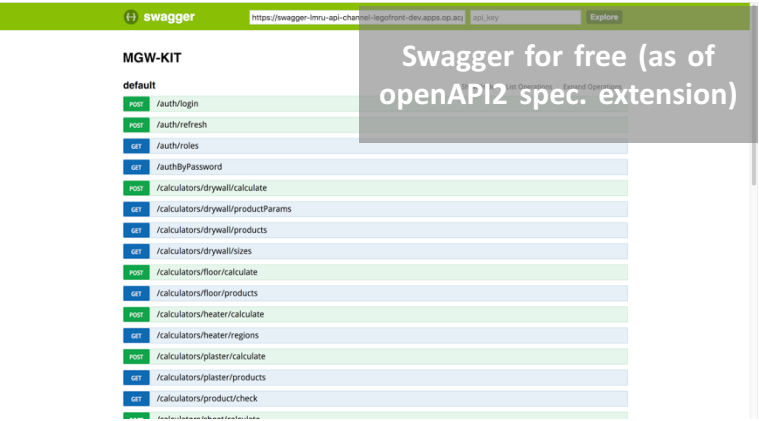


- 1) Graphical UI configurable solution based on flow definition
- 2) Full channels isolation by deploying application in separate containers
- 3) Prepared pipeline in memory to avoid runtime overcalculations





Orchestrator additional tools



Data Guardian Microgateway

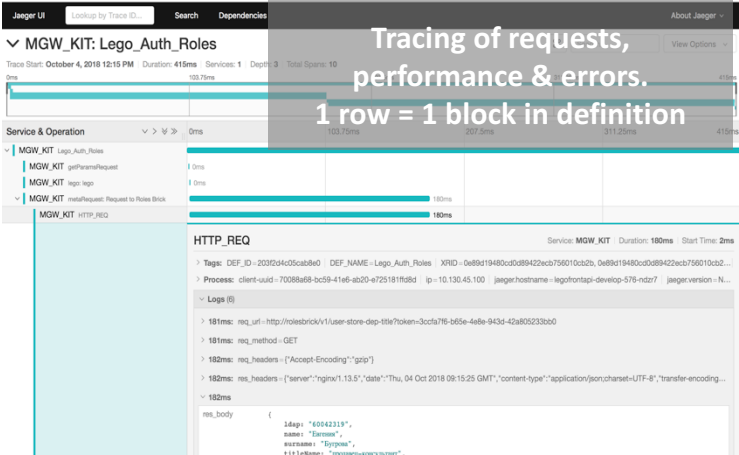
Percent fails (%) **98**

Status **FAIL**

Tests **Artillery**

All tests

#	Name	Tests	Passes	Pending	Failures	Passed percent	Fail percent	Pending percent
1	auth_refresh	0	0	0	0	100		
2	salesdoc_create	0	0	0	0	100		
3	withdrawal_order_add	0	0	0	0	100	0	
4	withdrawal_product_search_get	0	0	0	0	100	0	
5	salesdoc_search	25	22	0	3	88	12	0
6	withdrawal_products_detail	17	15	0	2	88.2	11.80	0
7	auth_login_post	18	18	0	0	100	0	0
8	salesdoc_products	3	3	0	0	100	0	0



LM_API platform

Leroy Merlin Russia

Moscow 2018



Aleksey.Matveev@leroymerlin.ru

 @amatveev_prog

api-platform@leroymerlin.ru

Leroy Merlin | Moscow, Russia

DOMI department