

PTx TRIMBLE —WM-FieldForm

Landforming Solution

Continuing a long tradition of innovation and excellence in water management solutions, the next generation of landforming systems from PTx Trimble is here. The WM-FieldForm landforming solution brings single scraper control for complex landforming, grading, leveling and terracing projects to the Precision-IQ™ field application for the first time. Utilizing the powerful GFX-1260™ display and NAV-900 guidance controller paired with machine control hardware and an additional receiver, farmers can achieve unmatched accuracy in controlling water movement into, off of and across fields.



Key Benefits

- Boost crop yields up to 30% in the first year
- Single scraper system capable of complex landforming, grading, leveling and terracing
- Greatly improved uptime and excellent accuracy from the NAV-900 receiver
- Faster design processing and quick machine control reaction times
- Intuitive workflows for simplified design, execution and verification
- Conduct your own landforming, maintenance and repair
- Save on irrigation costs and on the diesel fuel needed to run pumps by reducing total water need

PTx TRIMBLE—WM-FieldForm

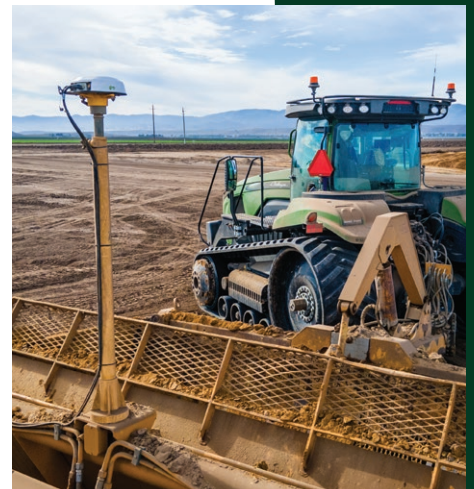
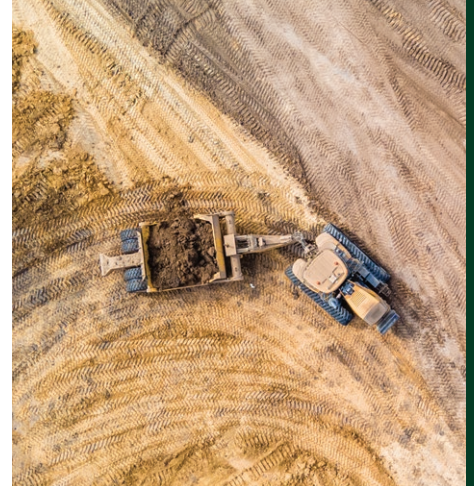
Landforming Solution

WM-FieldForm simplifies every step of the landforming process, including design, execution and verification. With improved visualizations, intuitive workflows and enhanced features, both experienced FieldLevel II™ system users and farmers new to water management can easily leverage this solution to improve crop yields up to 30% in the first year. In-display Simple Plane and AutoPlane designs, imported surveys, imported multi-plane designs, manual guidance and autoguidance are all at your fingertips.

Current PTx Trimble customers can save on total system costs by using the GFX display and NAV-900 already installed on their tractor, and many cables and harnesses in existing setups can be used by WM-FieldForm as well. The intuitive system empowers farmers to form their own fields, or to maintain and repair any previous dirt work done by a contractor.

With more than 50 years of experience delivering high quality water management products, this solution provides industry-leading dirt balancing algorithms to minimize topsoil disturbance, top-of-the-line GNSS positioning accuracy and uptime, and straightforward workflows that are easy to follow and quick to master.

Properly graded land improves yield by smoothing out high and low spots across a field that inhibit crop growth. They also reduce wear and tear on every farm vehicle and implement that move over a field all year long. In high precipitation areas, landforming with WM-FieldForm can reduce soil erosion, limit nutrient runoff and leaching, and prevent yield loss from ponding. In drier climates, you can make the most of limited water resources by reducing moisture runoff and keeping expensive irrigation water on the field where you need it.



Contact your PTx Trimble Reseller today

PTx TRIMBLE
10368 Westmoor Drive
Westminster, CO 80021
USA
+1-720-887-6100 Phone
+1-720-887-6101 Fax