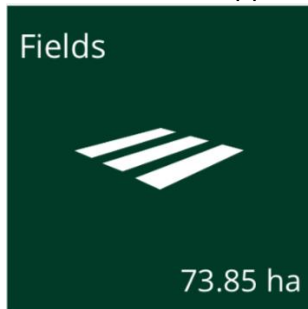


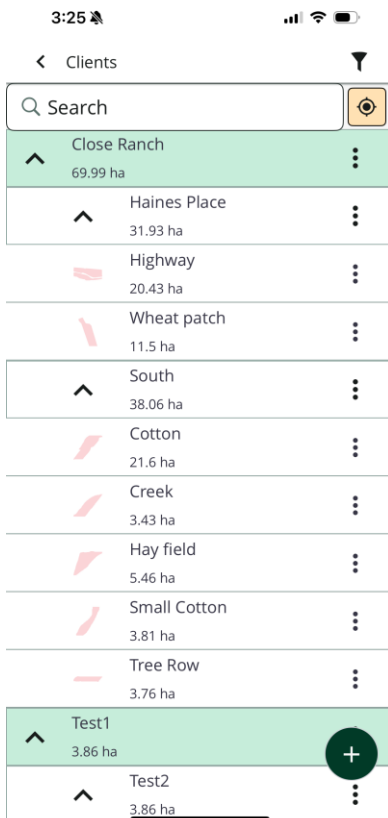
Mobile

Add clients, farms and fields on the mobile app



1. Log in to the mobile app with the same Trimble ID used to access your online account
2. From the mobile app home screen, select the preferred crop year (top left)
3. From the mobile app home screen, click on the Fields tile



4. Click the + icon in the lower right corner of the screen
5. Select 'Client', 'Farm' or 'Field' depending on which you are wanting to add



6. Client - Name the Client and click the floppy disc icon in the upper right to save

 New Client 

Client Name *

Farm - Name the Farm, select a Client (press the + button if you need to create a new client) and then click the floppy disc icon in the upper right to save

 New Farm 

Farm Name *

Client

>

+

Field - Enter a Field Name, select a Client, Farm and enter your Tillable area. Click 'Next'. Drive the boundary of the field by clicking 'Start', driving the boundary of your field and then clicking 'Done', click the floppy disc icon in the upper right hand corner to save the boundary. Or draw the boundary of the field by clicking 'Draw' and then 'Start', drag the screen so that the X is where you want to add a point and click '+ Add Point', do so until you have drawn the boundary of your field and then select "Done", click the floppy disc icon in the upper right hand corner to save the boundary.

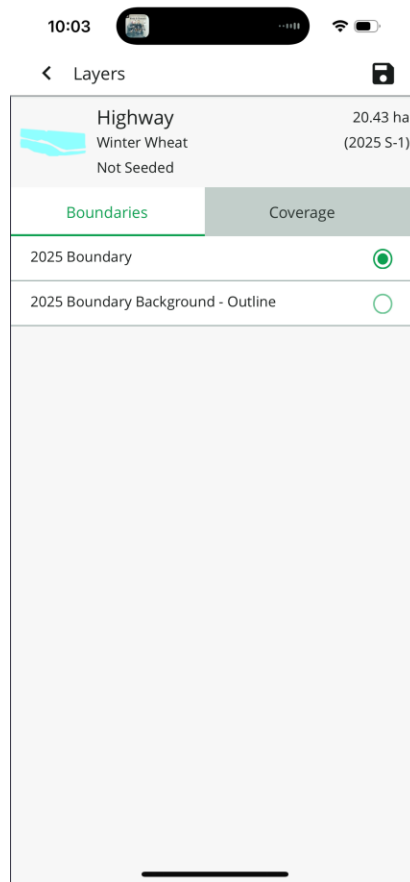
View map layers on the mobile app

Switch map layers to get more insight into data including alternate boundary views and coverage maps. Use these map features on any Crop Zone on the mobile app, starting from the home screen's Crop Zone tile.

1. Log in to the mobile app with the same Trimble ID used to access your online account
2. From the mobile app's home screen, select the preferred crop year (top left)
3. Tap the Crop Zone tile and select the desired Crop Zone
5. Show the map in Full Screen mode by tapping or sliding the black header with the grey bar



6. Choose the layers button (middle button on the right)
7. Choose different boundaries or Coverage map to view as-applied records

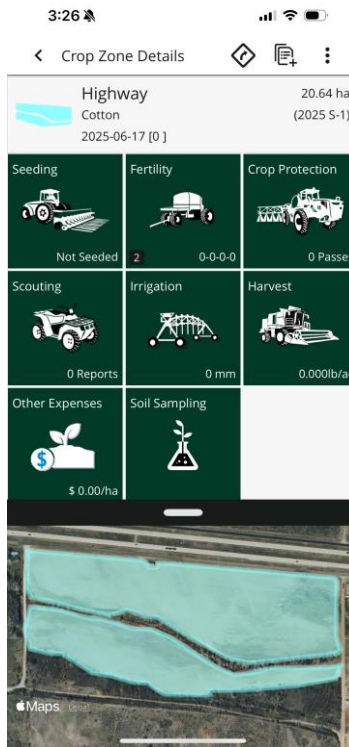


Get Directions to Crop Zones

You can easily get directions to a Crop Zone on the FarmENGAGE mobile app.

1. Log in to the mobile app with the same Trimble ID used to access your online account
 2. From the mobile app's home screen, select the preferred crop year (top left)
 3. Navigate to the Crop Zone to get directions
 - a. Click on the Crop Zone tile and select the Crop Zone you are interested in
- Or
- b. Select the fields tile and select the field you are interested in.
 - c. Swipe up to view the field resources in field manager
 - d. Select the Crop Zone that you wish to get directions to
 4. In the Crop Zone Details screen, select the arrow icon in the top right corner
 - a. This will direct you to your preferred navigation app with the location of the crop zone

Note – Cellular connectivity is required for this feature.




Create a Crop Zone

In the mobile app, you can easily create new Crop Zones in the field.

1. Log in to the mobile app with the same Trimble ID used to access your online account
2. From the mobile app's home screen, select the preferred crop year (top left)
3. Click on the Crop Zones tile



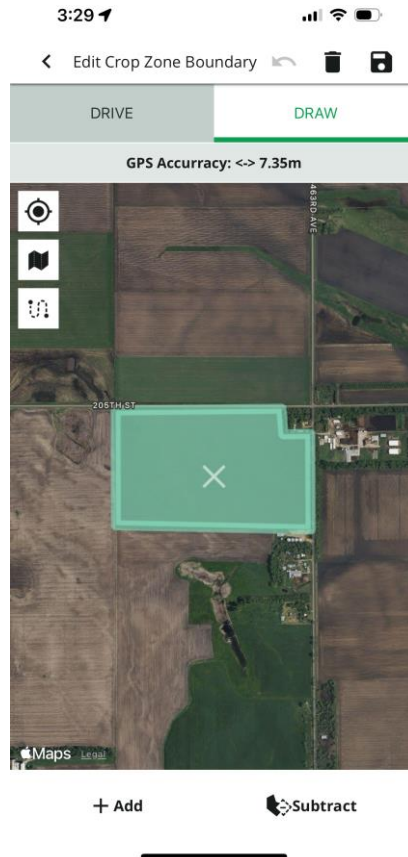
4. Click the "+" icon in the top right corner
5. Enter the New Crop Zone's details
6. Click the Boundary button  in the top right corner to Draw or Drive the boundary of the crop zone. Click Save.

3:27

< New Crop Zone

Name	Davis crop
Crop Year	2025
Hectares	
Farm	
Crop	
Description	
Variety	
Perennial	No
Target Yield	0 lb/ac , 0 % Moist
Legal Description	
Legal Land Description	+

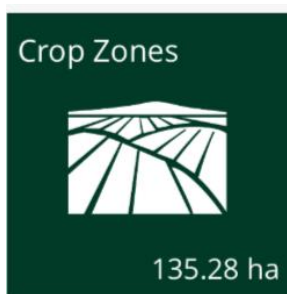
7. You have the option to drive or draw your Crop Zone boundary
 - a. Driving the Boundary
 - i. To drive the boundary, press start and drive the boundary of the field
 - ii. Select done when you have driven the boundary
 - b. Drawing the Boundary
 - i. Press start
 - ii. Move the map to align the X on the map with points on the boundary
 - iii. + Add a point and move the map to the next location of the field to create the boundary and continue adding points along the boundary



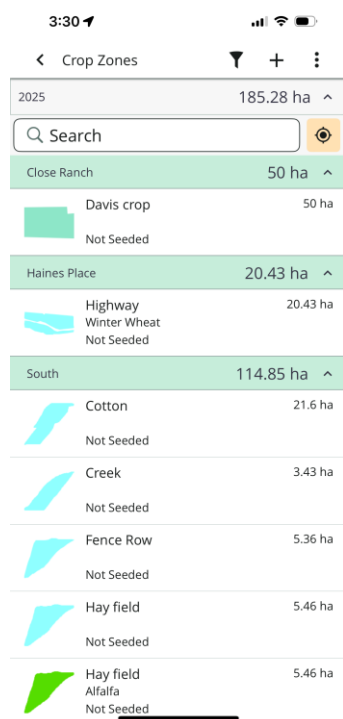
- iv. Press Done
- c. When complete, press the save button in the top right corner
 - i. You might be asked to if you would like to update your Crop Zone details with your mapped data
- d. Press Save again to save the new Crop Zone
- e. The new Crop Zone will now be listed

Edit Crop Zones on the mobile app

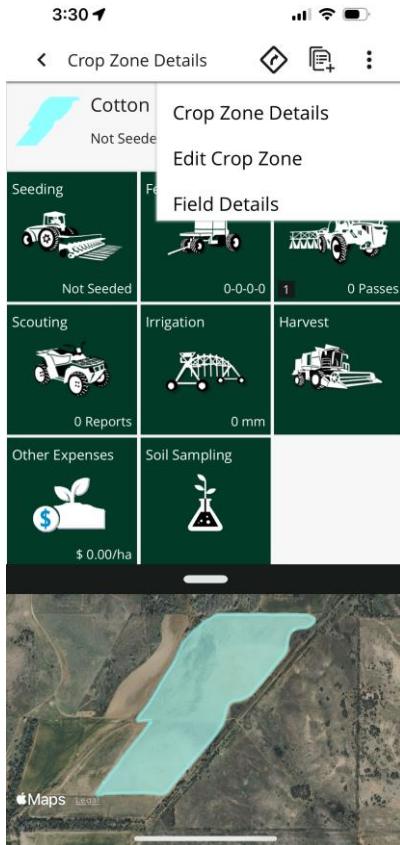
1. Log in to the mobile app with the same Trimble ID used to access your online account
2. From the mobile app's home screen, select the preferred crop year (top left)
3. Tap on the Crop Zone tile




4. Click on the crop zone that you want to edit



5. Click the three dot icon in the top right and select 'edit crop zone'.



6. Update any details required

7. Select the  icon to update the crop zone boundary

8. Tap Name to edit the field name

9. Tap Hectares/Acres to change the area of the crop zone

10. Tap Farm to select from the list of farms on your account, or add a new farm to the list


11. Tap Crop to search or select from Purchased, Frequent or All crops available

12. Tap Description to search or select options available for the selected crop

13. Tap Variety to search or select options available for the selected crop

14. Tap Target Yield to edit the quantity per area, tapping on the unit of measure shown to scroll and select a different measurement from the list, edit the moisture percentage, then click Save (or Dismiss)

14. Tap 'Legal Land Description +' to edit the Legal Land Description

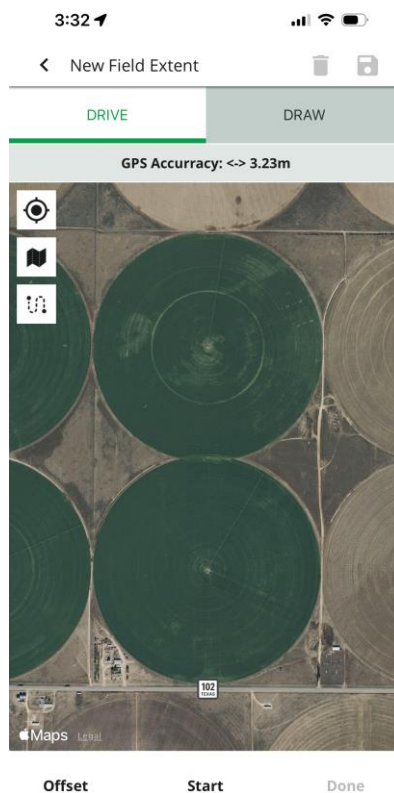
15. Select the floppy disc icon  to save changes

16. If changes were made offline, sync changes with the online account when you're within cellular or wi-fi range, by returning to the home screen and tapping the green sync icon (top right)

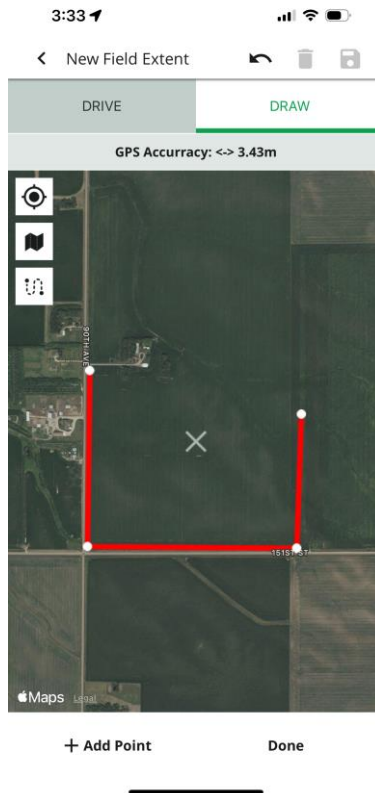
Drive and Draw Boundaries

You can easily Drive and Draw boundaries when creating or editing a field in the mobile app.

1. Log in to the mobile app with the same Trimble ID used to access your online account
2. From the mobile app's home screen, select the preferred crop year (top left)
3. Select the Fields tile
4. Either select a field to edit the boundary or create a new field by pressing the “+” icon in the bottom right
 - a. Select the edit icon on the map or enter the relevant details to create a new field
5. You can drive the field edge while recording to create the boundary or draw the boundary based on moving the map on field points
 - a. Driving the Boundary
 - i. You can record the boundary by pressing start on the recording and drive the boundary
 - ii. Select done and save



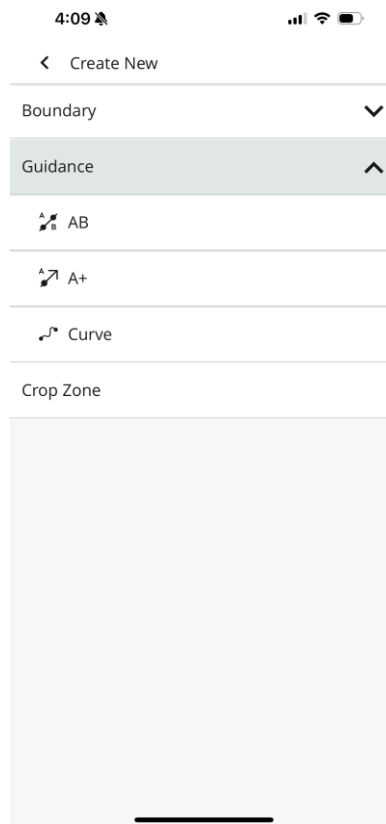
- b. Drawing the Boundary
 - i. You can draw the boundary by aligning the X on the map with points in the field
 - ii. Add a point around the boundary
 - iii. Select done and save



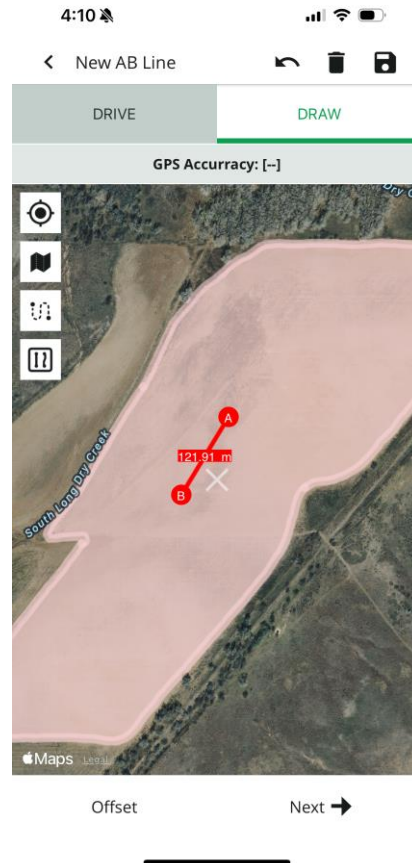
Drive and Draw Guidance Lines

You can easily Drive and Draw Guidance lines when using the mobile app.

1. Log in to the mobile app with the same Trimble ID used to access your online account
2. From the mobile app's home screen, select the preferred crop year (top left)
3. Tap on the Fields tile
4. Select the field that you want to add a guidance line to
5. In Field manager, click the “+” icon at the bottom of the screen
6. Tap the Guidance drop down and select the guidance line type. For this example, we will select AB.



7. You can Drive or Draw the new line
 - a. Drive the Guidance Line
 - i. Tap Set A to set the A point
 - ii. Drive a distance then Tap B to set the B point
 - b. Draw the Guidance line
 - i. Move the map around to align the X on the map
 - ii. Set the A point
 - iii. Move the map ten Select the B point



8. Tap Next
9. Name the new guidance line
10. Tap Save in the top right corner to create the Guidance Line

Create and Edit a Work Order

With the mobile app, you can easily create and edit work orders from any location.

1. Log in to the mobile app with the same Trimble ID used to access your online account
2. From the mobile app's home screen, select the preferred crop year (top left)
3. Tap on the Work Orders tile
4. Tap the + in the top right corner
5. At the top of the Work Order, chose the crop zone and press the save floppy disk icon
6. Enter the details of the work order you would like to create
7. For more information about Work Order compatibility with Precision-IQ displays see this guide
8. Press save when complete

4:11

< Work Order

Cotton

Task Name
Spreading

Operation [Manage Operation Types](#)
Spreading

Operation Sub Type

Planned Date	Expiry Date	Repeats
Thu, Aug. 21	Thu, Aug. 21	Never

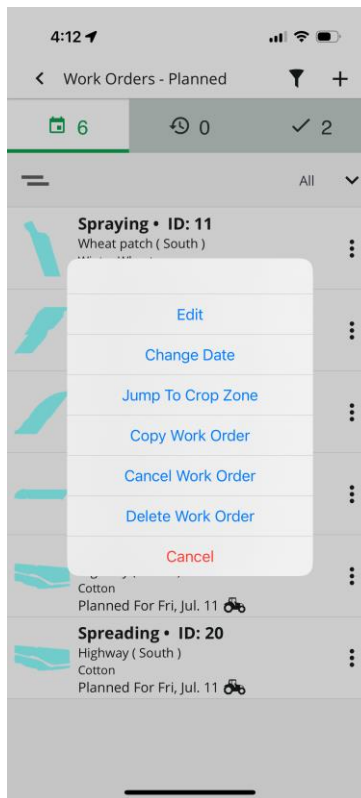
Crop Stage

Weather Restrictions >

Photos

Total Task Costs \$ 0.00/ ha

9. To edit a Work Order, press on the work orders tile to view your Work Order
10. Click on the 3 dots on a work order and tap edit
11. Edit the Work Order information and press save when done



Copy Work Orders

With the mobile app, you can easily copy Work Orders to keep track of work from any location.

1. Log in to the mobile app with the same Trimble ID used to access your online account
2. From the mobile app's home screen, select the preferred crop year (top left)
3. Tap on the Work Orders tile
4. Tap the 3 dots of the Work Order you would like to copy
5. Tap Copy Work Order
6. Enter the information for the new work order including Planned Date and Expiry Date
7. Tap save to copy and create the new Work Order

4:12

< Work Order

Cotton +6 Others
View Summary

1 0 0 0

Task Name
Spraying

Operation
Spraying

Operation Sub Type

Planned Date Expiry Date Repeats
Never

Crop Stage

Weather Restrictions

Photos

Total Task Costs \$ 0.00/ ha

Completing a Work Order

The mobile app allows you to keep track of completing Work from anywhere.

1. Log in to the mobile app with the same Trimble ID used to access your online account
2. From the mobile app's home screen, select the preferred crop year (top left)
3. Tap on the Work Orders tile
4. Tap on the Work order you are about to start
5. Tap Start to start the Work Order
 - a. Make sure all required information is entered before starting the Work Order

4:12

< Work Order

Cotton +2 Others
[View Summary](#)

▶START

1 0 0 0

Task Name
 Spraying

Operation [Manage Operation Types](#)
 Spraying

Operation Sub Type

Planned Date	Expiry Date
Tue, Jul. 01	Fri, Oct. 31

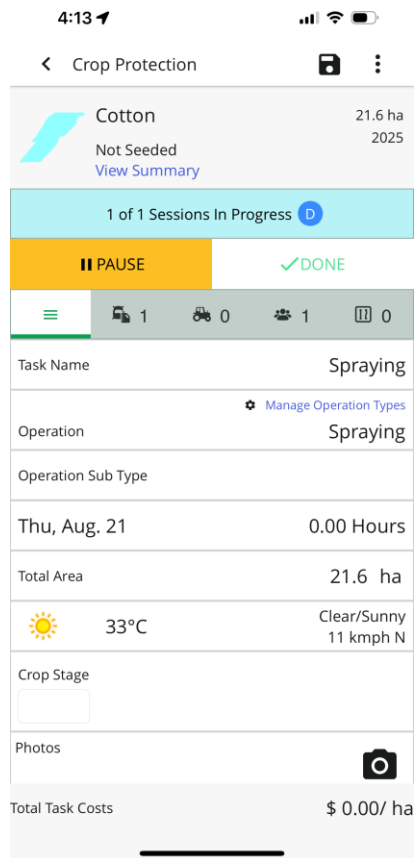
Crop Stage

Weather Restrictions >

Photos

Total Task Costs \$ 0.00/ ha

6. The Work Order is now in progress
 - a. You can pause the Work Order if your work is stopped temporarily
7. When you complete the Work Order, tap done to complete the Work Order
8. The completed Work Order is now in the completed list



View Work Order Summary

1. Log in to the mobile app with the same Trimble ID used to access your online account
2. From the mobile app's home screen, select the preferred crop year (top left)
3. Tap on the Work Orders tile to navigate to the Work Order list
4. Long press on the crop zone image on the left hand side to multiselect the desired work orders
5. Tap the 3 dots in the upper right hand corner and select View Summary to see product rates, totals and costs for the selected Work Orders
6. Tap the pencil icon to send the summary using the desired app on your mobile device
7. To view details about each product select the arrow pointing to the right on each line

10:08

< Work Order

Small Cotton
[View Summary](#)

1 Sessions Done

✓ DONE

1 0 0 0

Task Name
Spraying

Operation [Manage Operation Types](#)
Spraying

Operation Sub Type

Planned Date Tue, Jul. 01	Expiry Date Fri, Oct. 31
------------------------------	-----------------------------

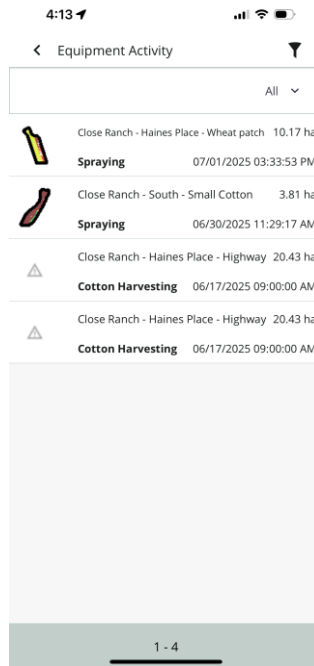
Crop Stage

Weather Restrictions >

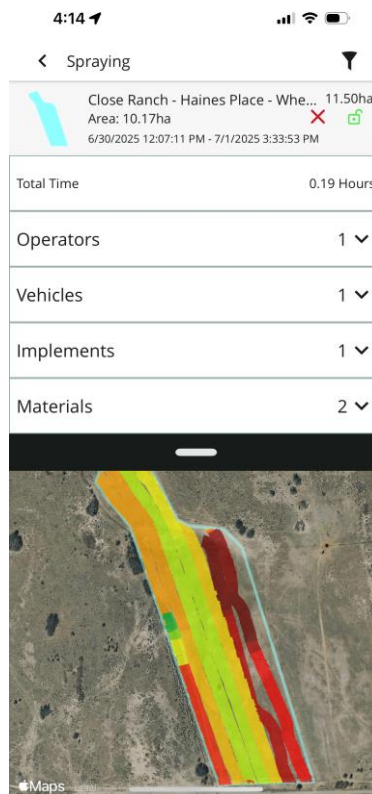
Total Task Costs \$ 0.00/ ha

View Tasks, Details, and Coverage Area

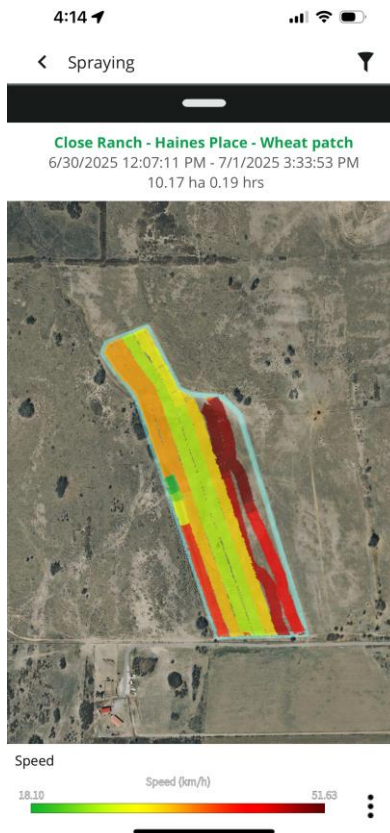
1. Log in to the mobile app with the same Trimble ID used to access your online account
2. From the mobile app's home screen, select the preferred crop year (top left)
3. Tap on the Equipment Activity tile
4. Chose the Task that you are interested in
 - a. Use the Filter in the black bar to choose a time period of tasks to display



5. You can view the details of the task
6. Tap on the black bar to view different coverage maps (vehicle sensors and DDI's)



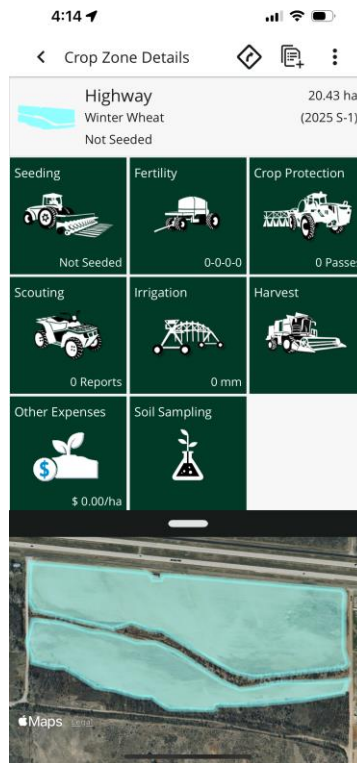
7. You can view coverage areas for different sensors on the map
 - a. To choose different coverage areas, tap on the 3 dots in the bottom right and select the sensor you would like to view
8. Use the filter in the upper right hand corner to choose select sessions of the task to view



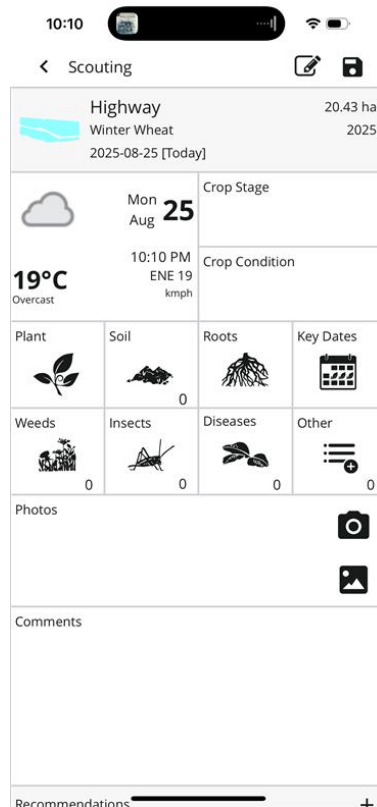
Create Scouting Records

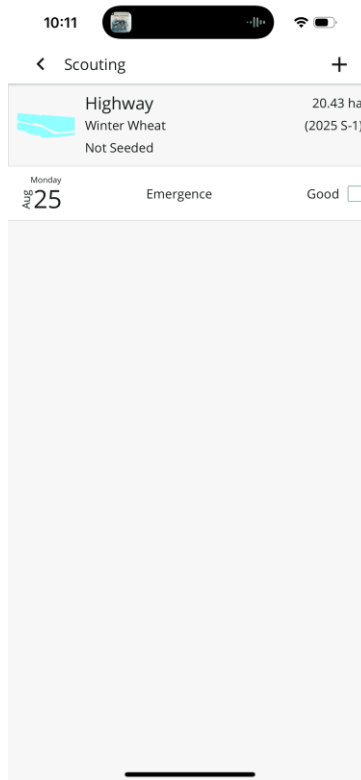
You can easily see add and view scouting data from the mobile app.

1. Log in to the mobile app with the same Trimble ID used to access your online account
2. From the mobile app's home screen, select the preferred crop year (top left)
3. Tap on the Crop Zones tile
4. Select the Crop Zone that you would like to add Scouting data
5. When viewing the Crop Zone, click on the Scouting tile
 - a. If you do not see the scouting tile, you need to enable this on FarmENGAGE ->Licenses->marketplace



6. Select the + icon to add scouting data
7. Enter the scouting data for the crop zone to keep track of the field's data

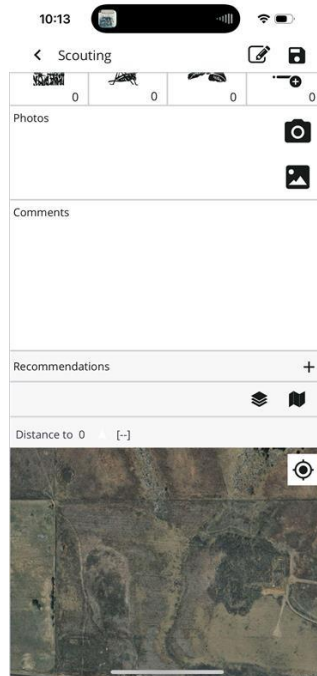




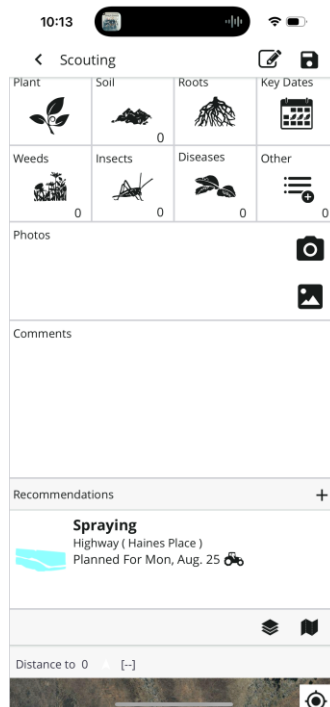
8. Press save when you have finished entering the scouting data
9. View the Scouting report in the Crop Zone > Scouting tile or in the Reports tile

Convert Scouting Record into a Work Order

1. Log in to the mobile app with the same Trimble ID used to access your online account
2. From the mobile app's home screen, select the preferred crop year (top left)
3. Tap on the Crop Zones tile > Select the Crop Zone > Select Scouting record OR
4. Tap on the Reports tile > Select Scouting Record
5. At the bottom of the Scouting record, tap Recommendations +

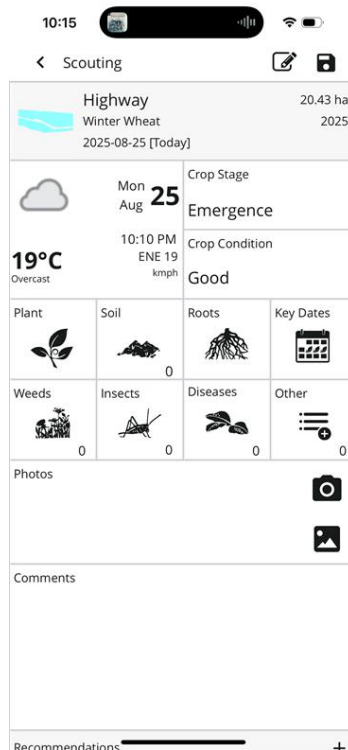


6. Enter in the details of your Work Order
7. Once saved, you can see this Work Order under Recommendations on the scouting record or in the Work Order tile




Email Scouting Reports

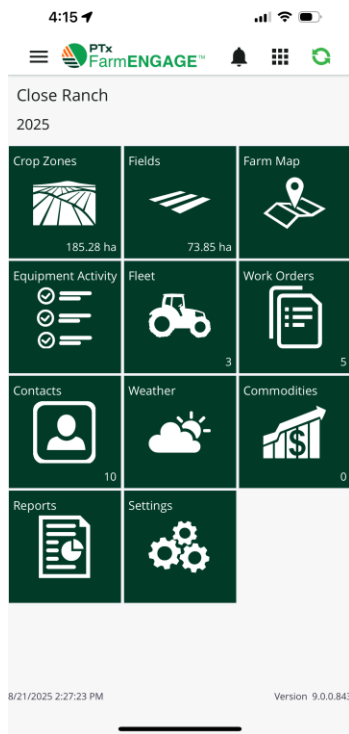
1. Log in to the mobile app with the same Trimble ID used to access your online account
2. From the mobile app's home screen, select the preferred crop year (top left)
3. Tap on the Crop Zones tile > Select the Crop Zone > Select Scouting record OR
4. Tap on the Reports tile > Select Scouting Record
5. Choose the checkboxes on the right-hand side for each report
6. Click the pencil icon in the top right-hand corner



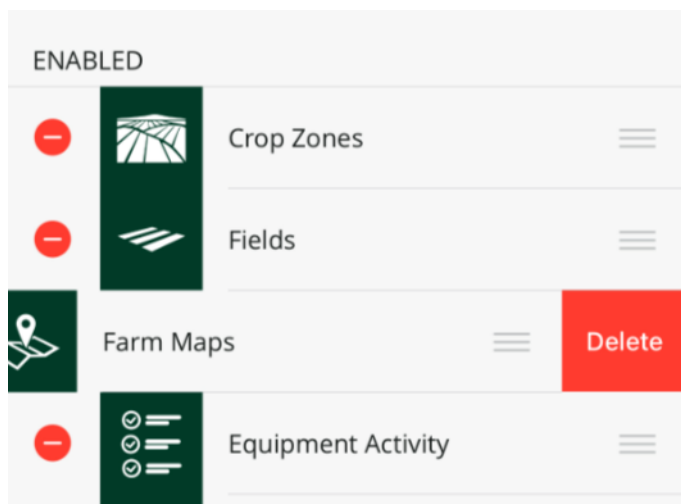
Configure tiles in the mobile app

The FarmENGAGE Mobile app home screen can be adjusted to show or hide tiles, to help you focus on the areas of your account that matter most to you. Once a tile is disabled then enabled again, it will appear in the top left corner of the home screen, adjusting the default layout of tiles on the mobile app.

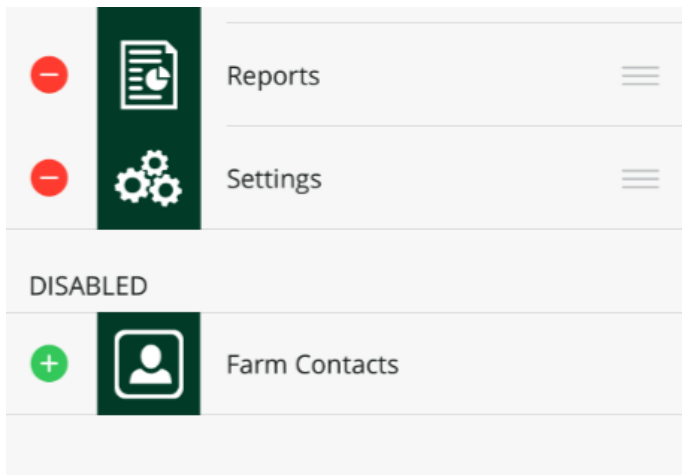
1. To change which tiles are visible, click on the tiles icon  in the top right corner of the home screen.



2. Click the red minus icon to change a tile from enabled to disabled from view, then click Delete.



3. To enable viewing of a tile on the home screen, scroll down to the disabled list, click the green plus icon.



4. To reorder the tiles, use the hamburger menu on the left to drag and drop in the desired order.