

16 June 2024

Olivia Ridgewell
Development Analyst
ESR Australia
Level 12, 135 King Street,
SYDNEY NSW 2000

By email: Olivia.Ridgewell@esr.com

Dear Ms Ridgewell,

Re: Bushfire Advice – Horsley Logistics Park - 3 Johnston Crescent, Horsley Park

I refer to the proposed Horsley Logistics Park industrial development at 3 Johnston Crescent, Horsley Park and your request for Blackash to review the bushfire requirements relevant to the State Significant Development.

The site is not located on designated bushfire prone land (see Appendix 1) and therefore the bushfire planning and building provisions do not apply including *Planning for Bushfire Protection 2019*. Given the development is not on mapped bush fire prone land, nor is there a bush fire threat identified on or adjoining the site, a bush fire assessment is not required.

In this regard, there are no legislative bushfire assessment or protection requirements for the proposed development.

If you require any further information or have any queries, please do not hesitate to contact me directly on 0418 412 118.

Yours sincerely,



Corey Shackleton | Principal Bushfire & Resilience

Blackash Bushfire Consulting

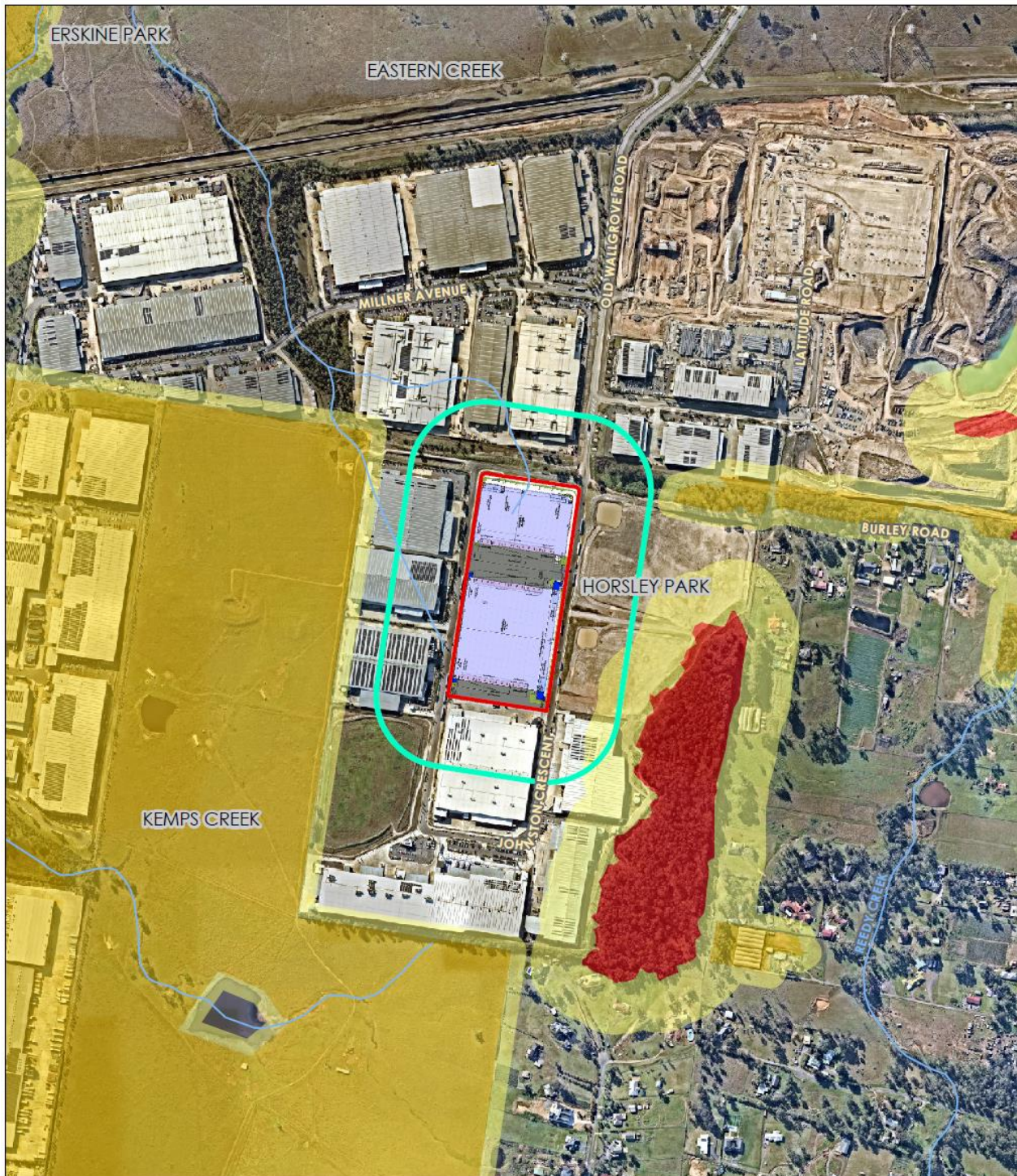
B. Science, Grad. Dip. (Design for Bushfire Prone Areas),

Grad. Cert. (Applied Management, Police and Emergency Services)

Fire Protection Association of Australia BPAD Level 3 - 34603



Appendix 1 – Bushfire Prone Land Map



Legend

-  Watercourse
-  Subject Land
- Bushfire Prone Land**
-  Vegetation Buffer

-  Vegetation Category 1
-  Vegetation Category 2
-  Vegetation Assessment Buffer



Date: 6/06/2024

0 100 200

Meters

Coordinate System: GDA2020 MGA Zone 56

Imagery: © Nearmap