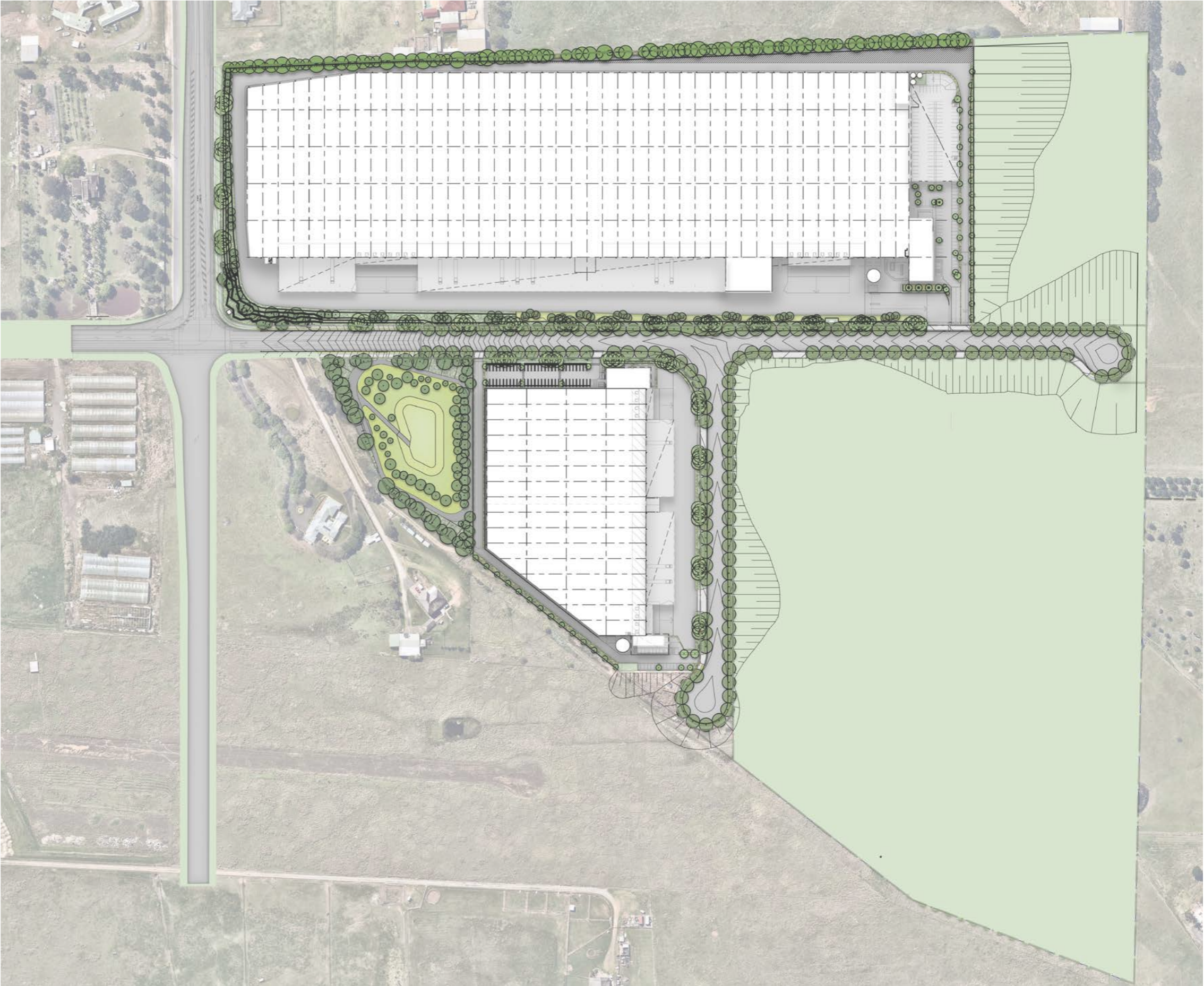


Kemps Creek Logistics Park SSDA Report
Landscape Concept
October 2022

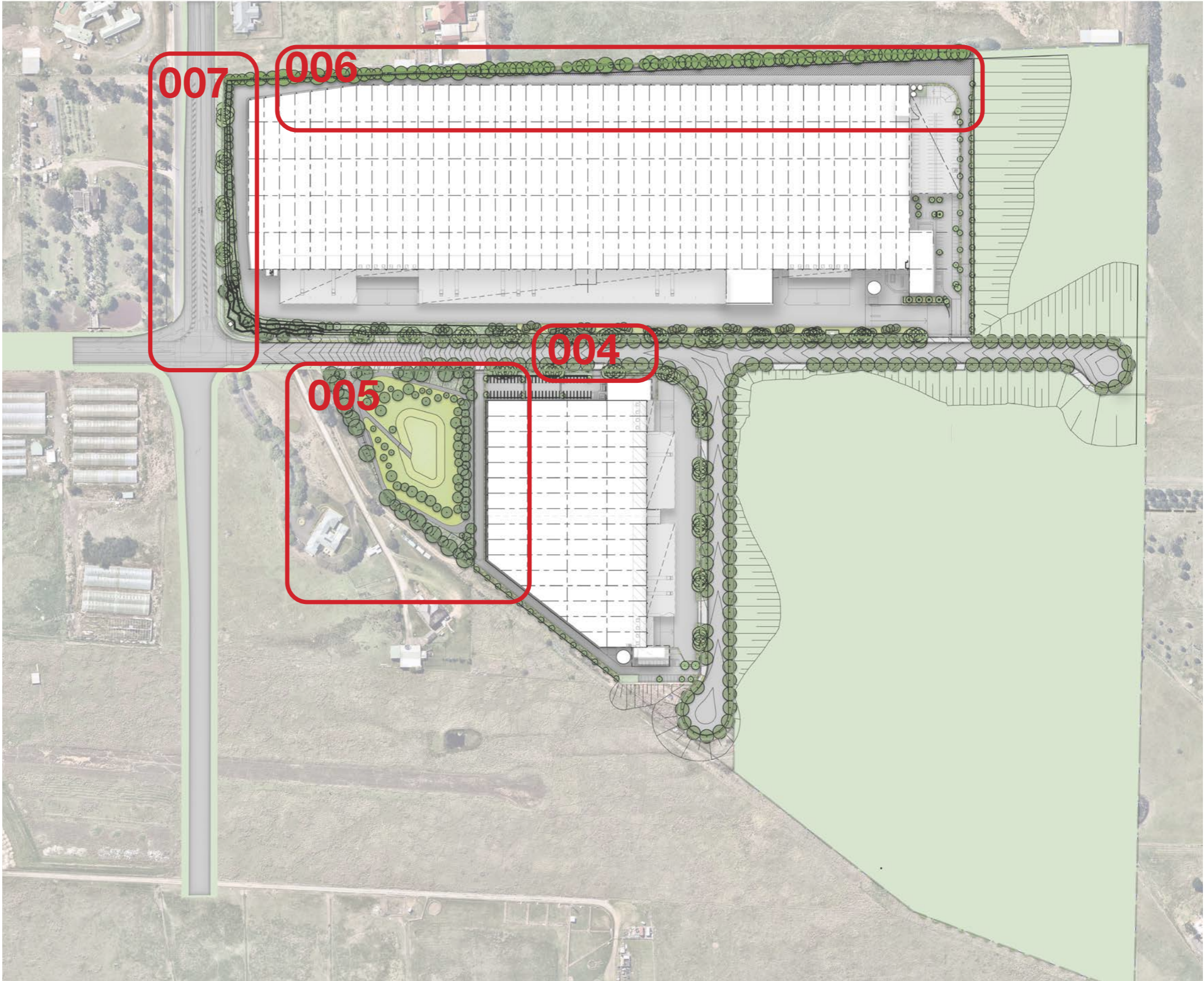


Landscape Masterplan

The landscape concept masterplan demonstrates the vision for the Kemps Creek Logistics Park. This Masterplan report is to be read with other consultants report including civil, and architectural.



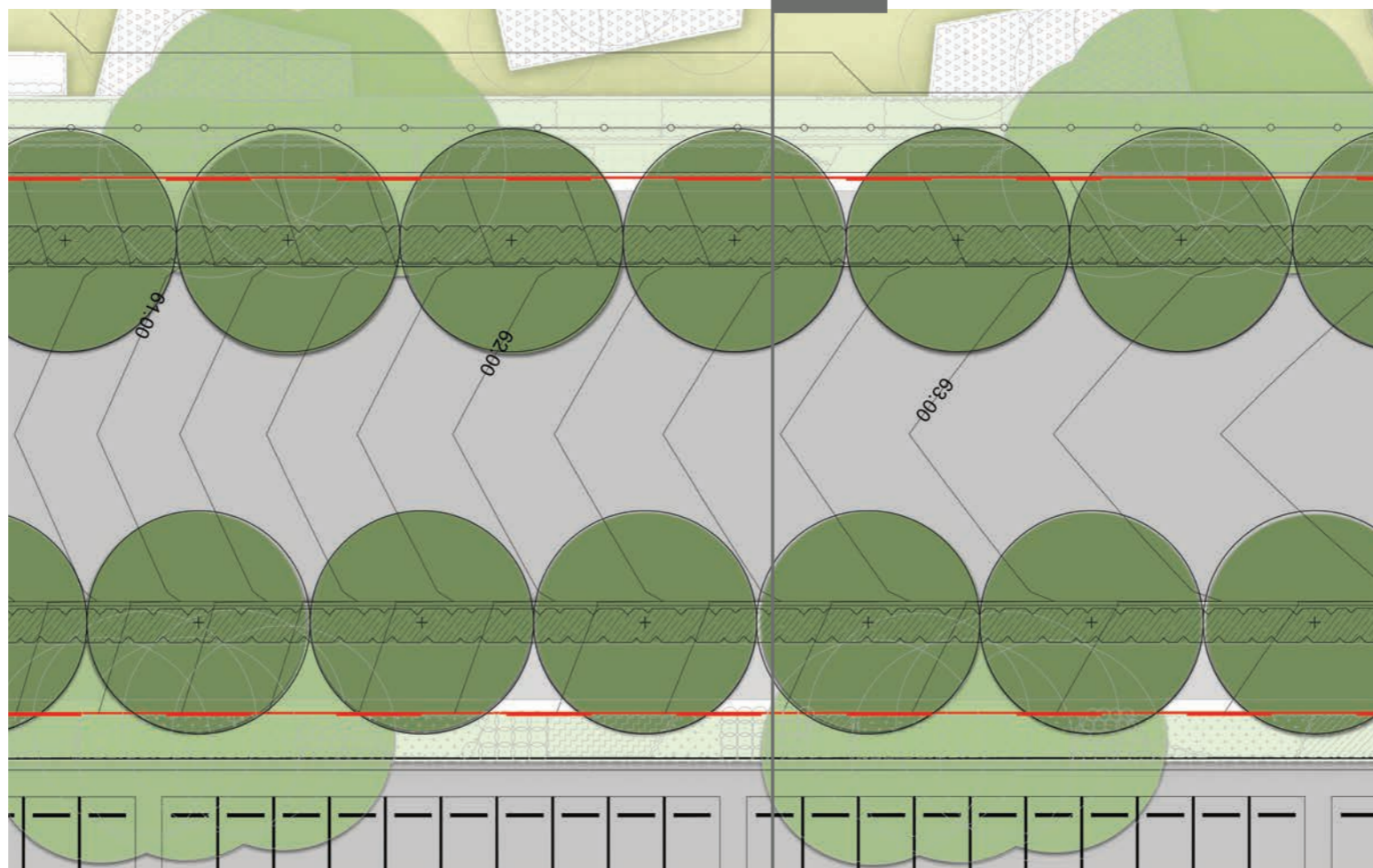
Landscape Areas



- 004** Estate Road
- 005** Detention Basin and Amenities
- 006** Northern Boundary
- 007** Adington Road Frontage

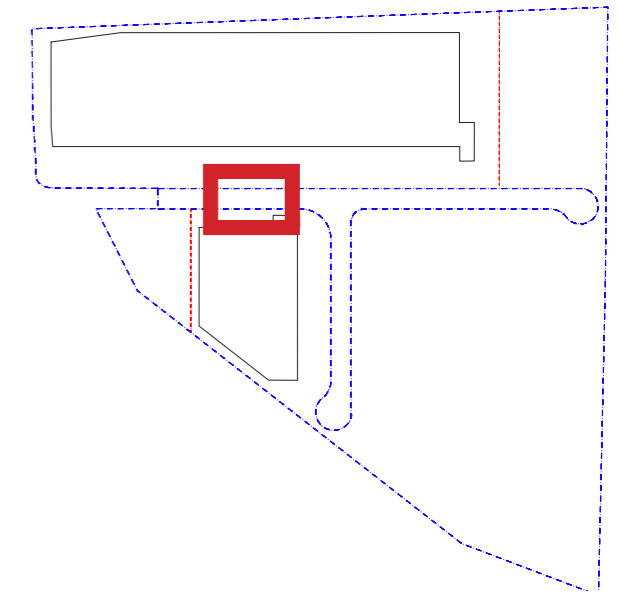
Estate Road

The Estate roads will feature street tree planting to both sides. A turf verge between the footpath and kerb allows for groups of trees. Proposed street tree species are *Corymbia maculata* at 100L pot size.



Plan Typical Estate Road

A



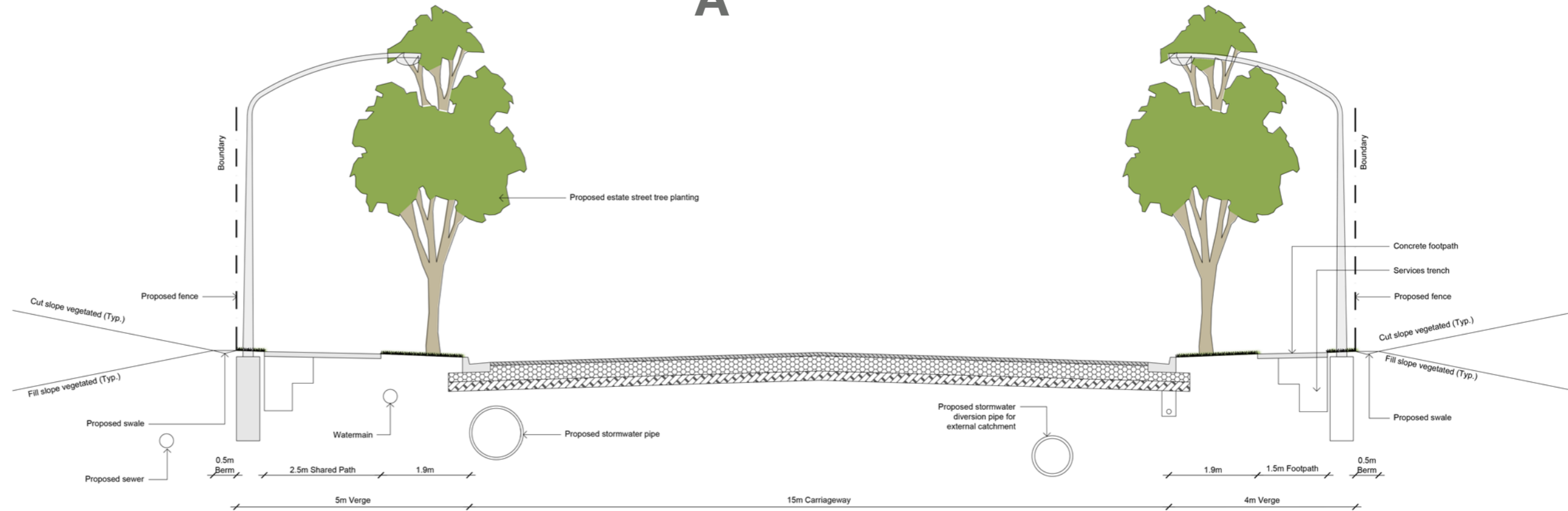
Keyplan



Turf verge with tree planting



Corymbia maculata



Section A

Detention Basin and Amenities

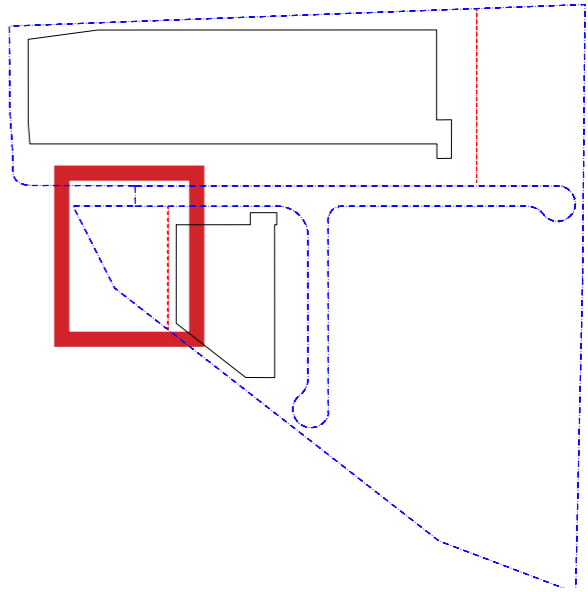
The detention basin to civil design will incorporate complementary landscaping on the base and embankments. The outer embankment canopy trees are proposed throughout.



Shaded seating areas



Amenity planting



Keyplan



Outer embankment with tree planting

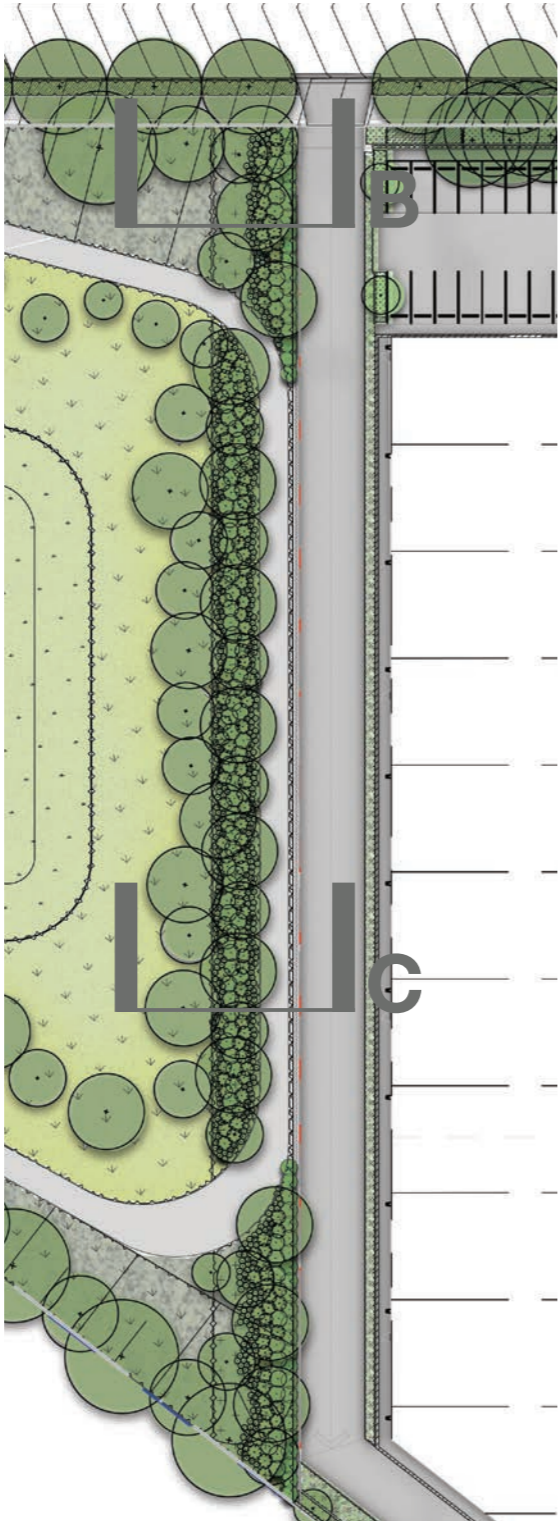


Maintenance pathway

Plan Detention Basin and Amenities

Detention Basin Wall Screening

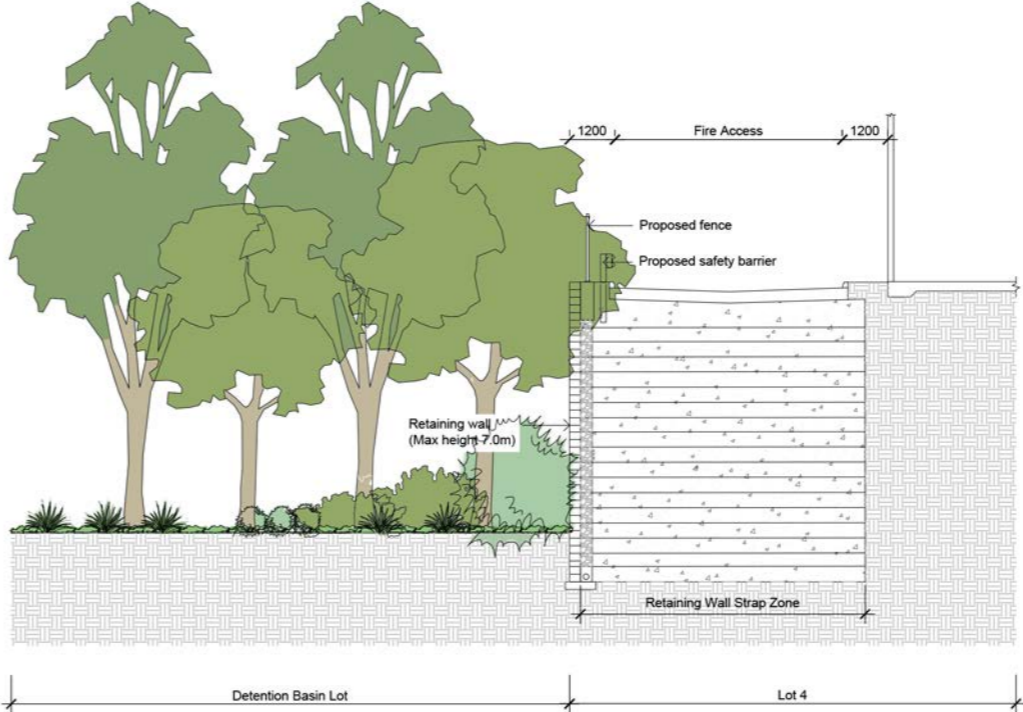
Mix of small, medium and large native shrub planting in combination with medium and large tree planting to provide screening to the retaining wall between Warehouse 4 and the Detention Basin.



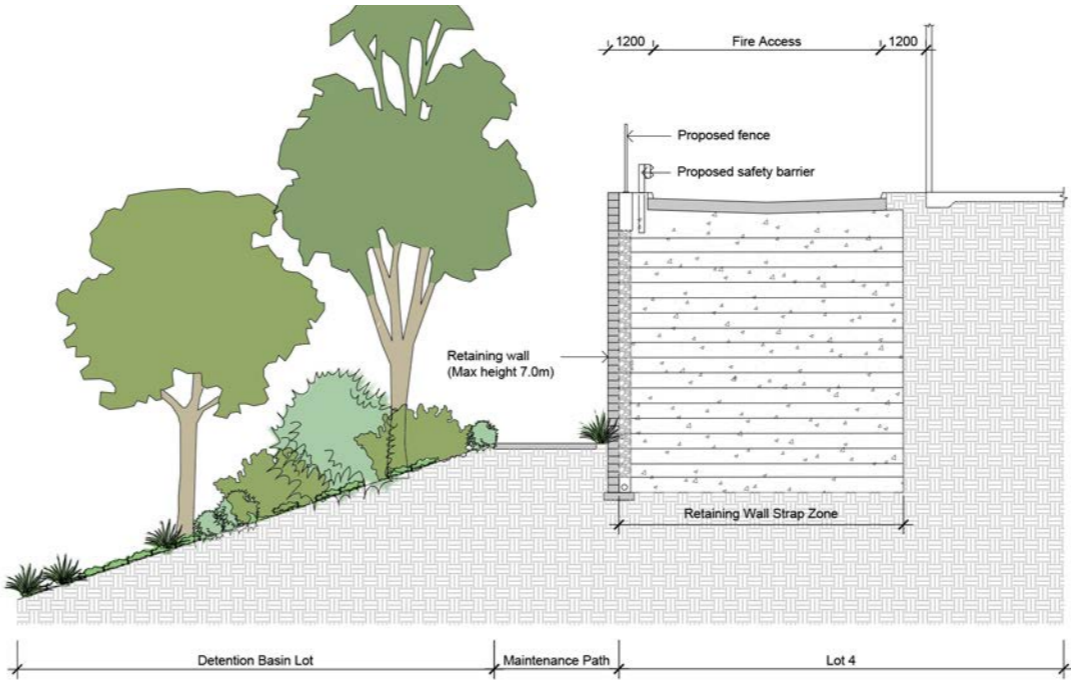
Screening tree planting



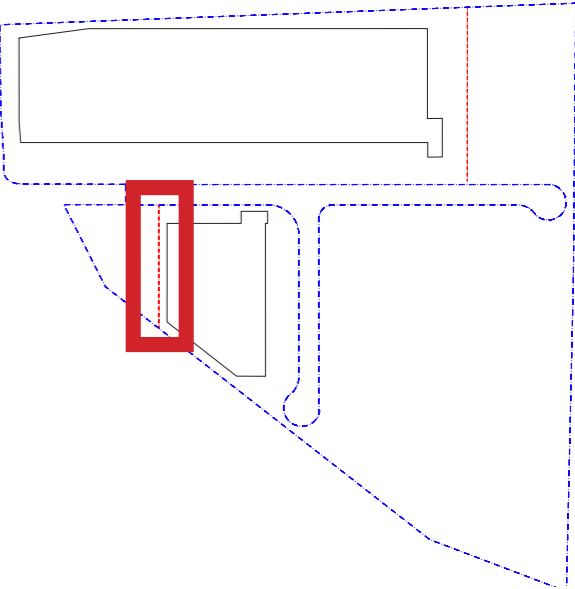
Range of screening shrub planting



Section B



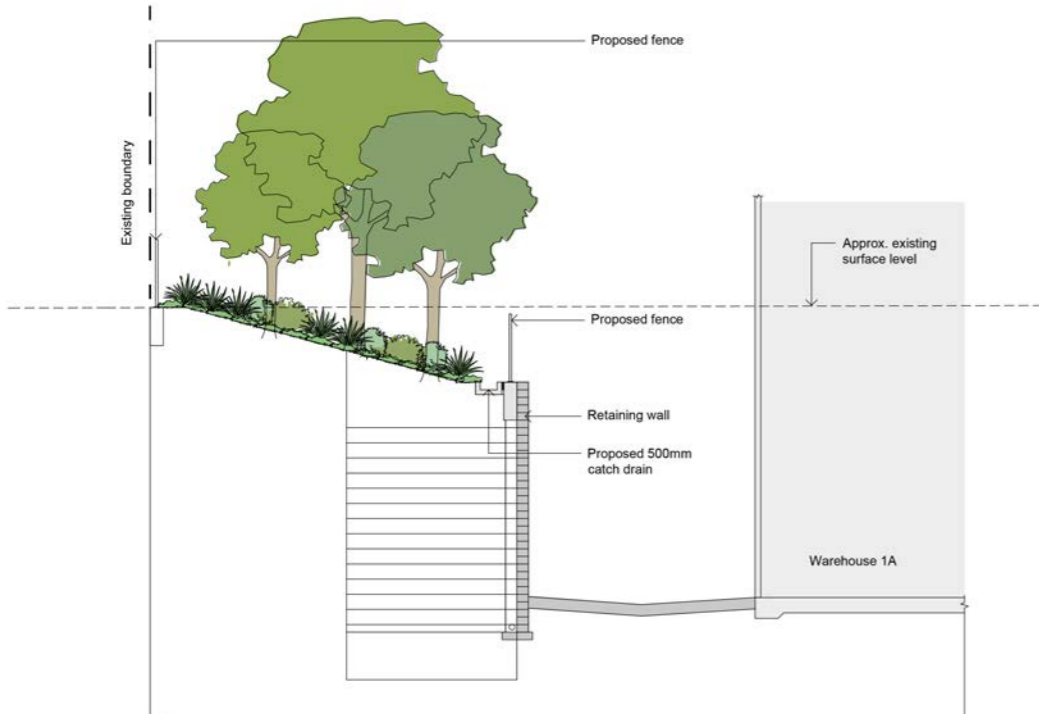
Section C



Keyplan

Northern Boundary

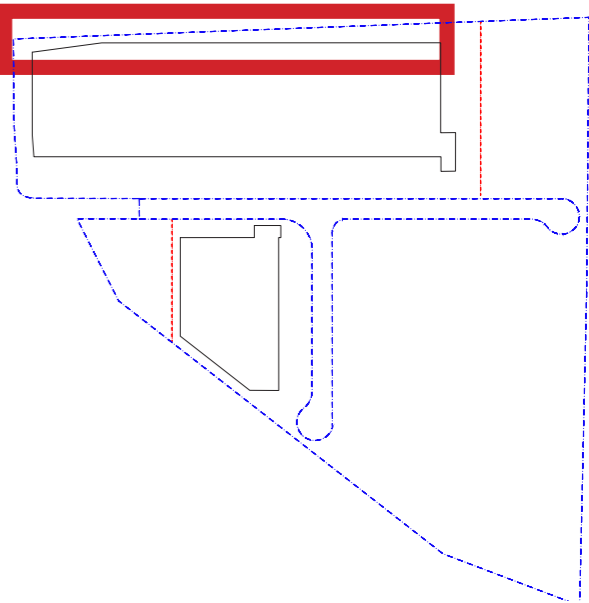
The northern boundary will be planted with massed grassed and groundcovers. Canopy trees in groups will line the boundary with emphasis on screening around the adjacent heritage building.



Native canopy tree screening to boundary

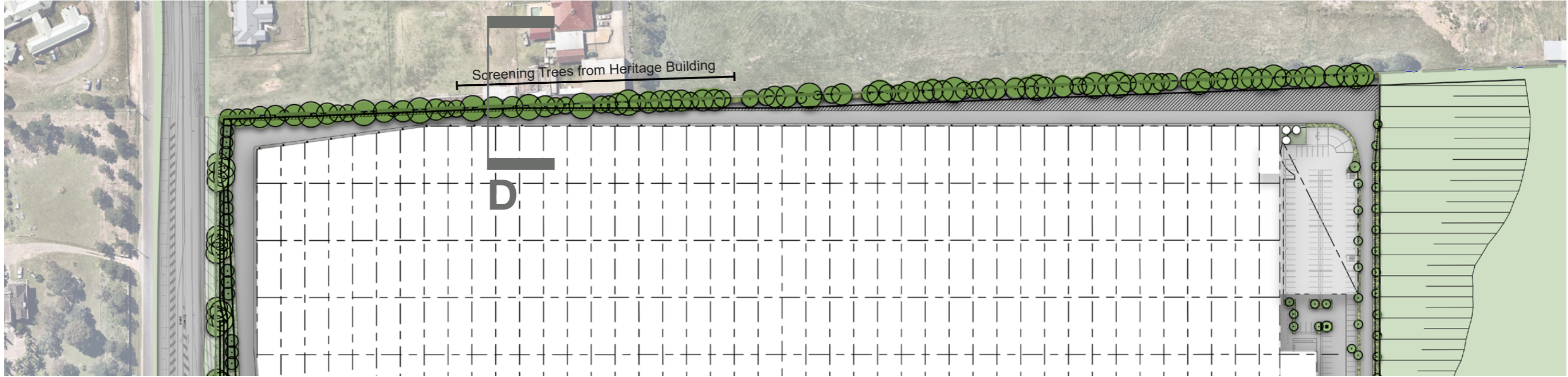


Massed shrubs and groundcovers



Keyplan

Section D



Aldington Road Frontage

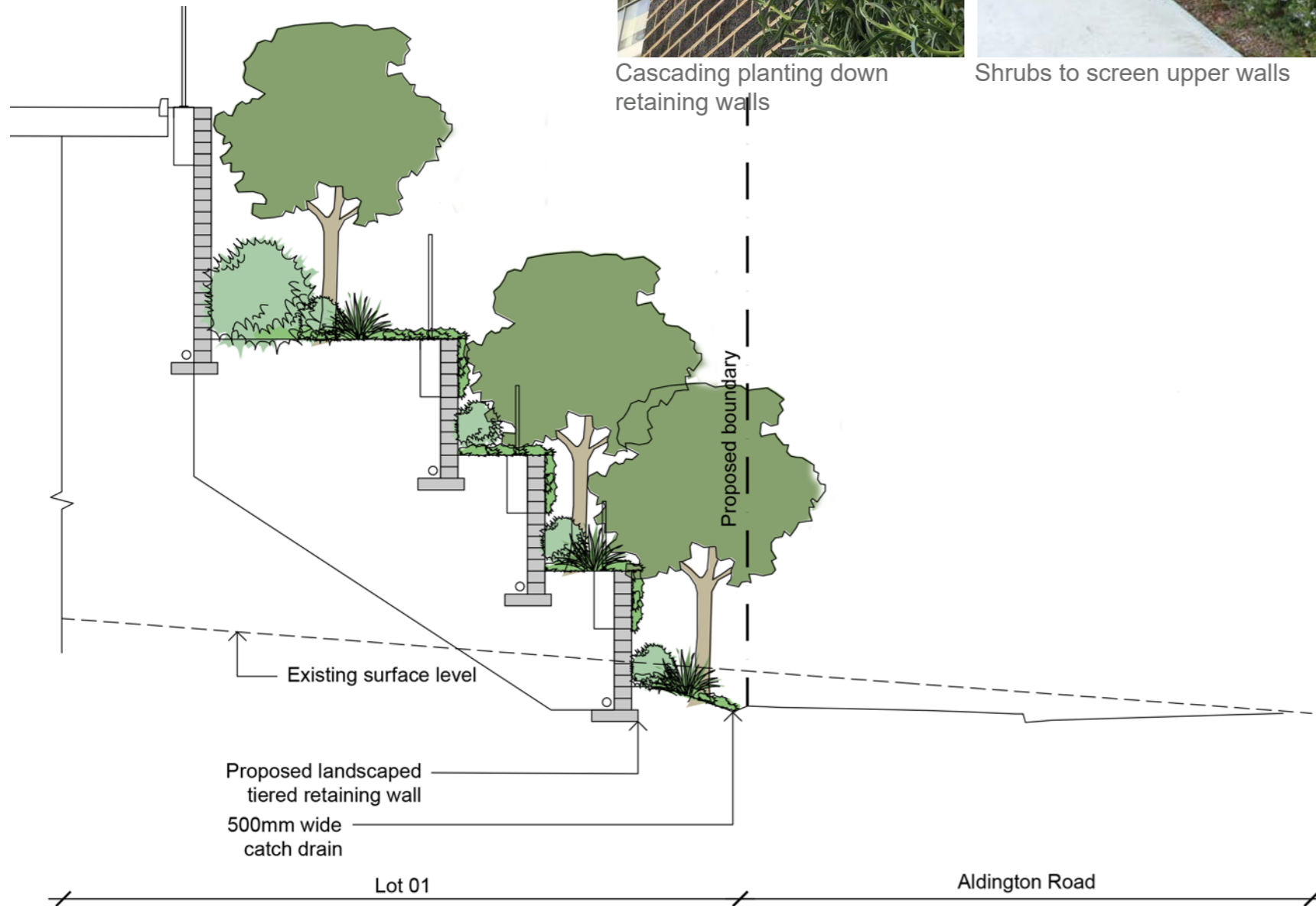
The Aldington Road frontage features a series of retaining walls to the 1a frontage. Landscape is proposed within the terrace levels of shrubs, grasses and cascading groundcovers to screen the face of the wall.



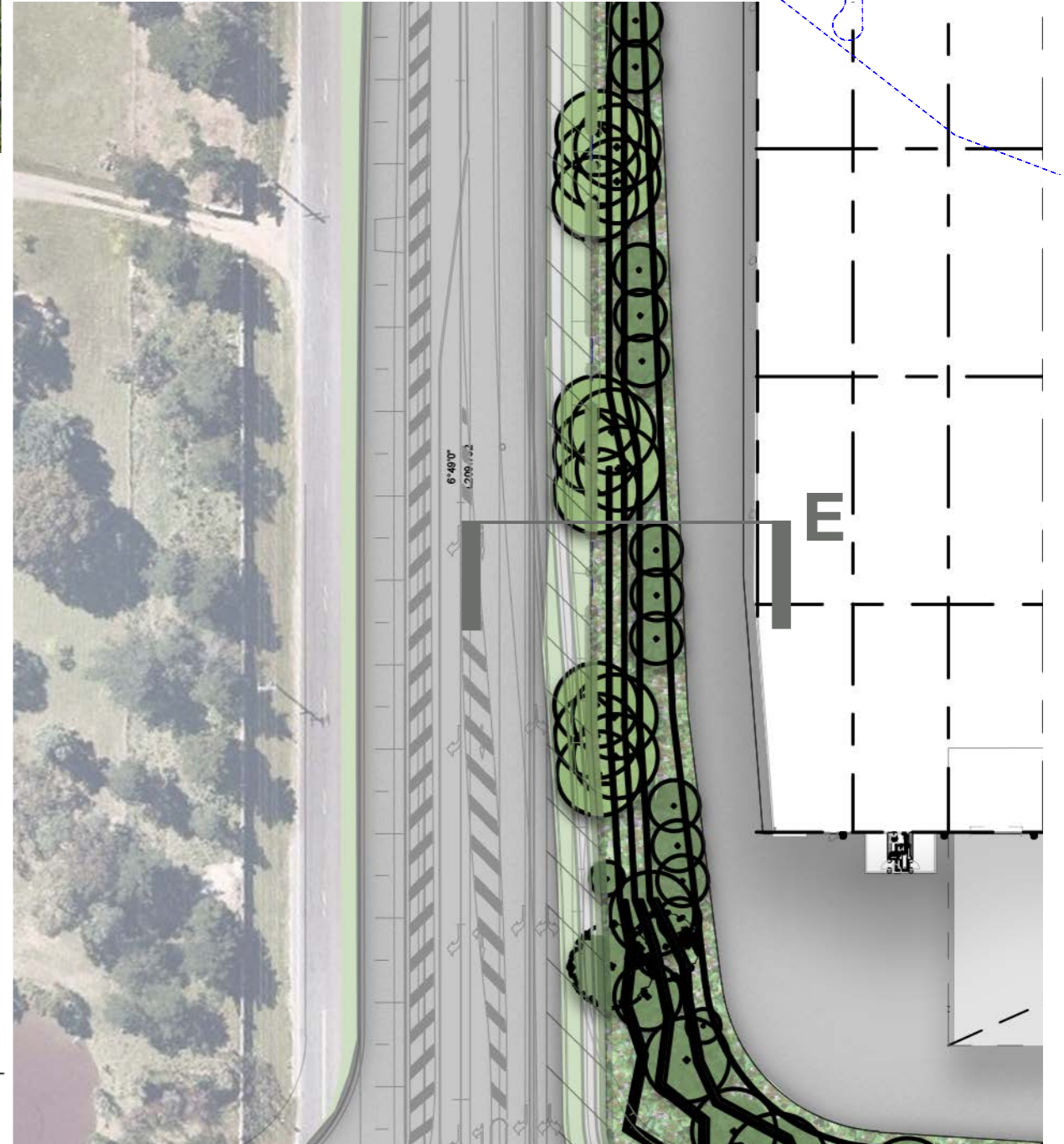
Cascading planting down retaining walls



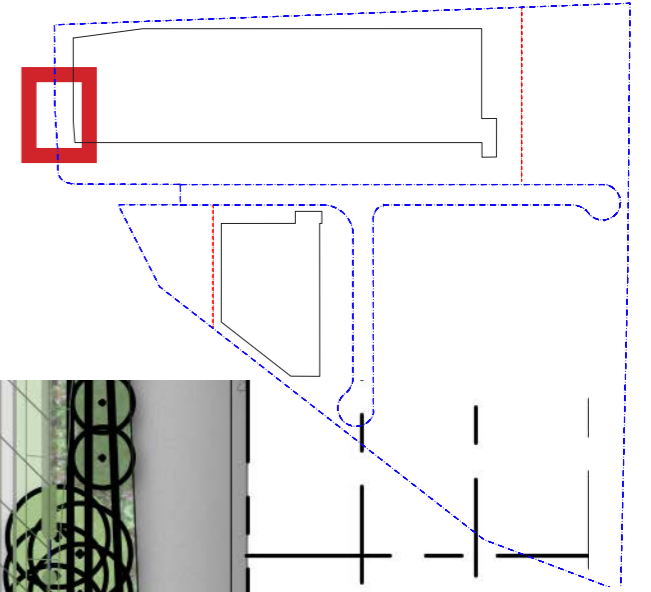
Shrubs to screen upper walls



Section E



Plan Eastern Boundary



Aldington Road Retaining Wall

Feature retaining walls to the Aldington Rd corner are proposed these will feature a signage element. Tiers of varying sandstone finish will ascend from the street level. Shrub grass and groundcover planting are located on each level. Trees are positioned in larger pockets between walls.



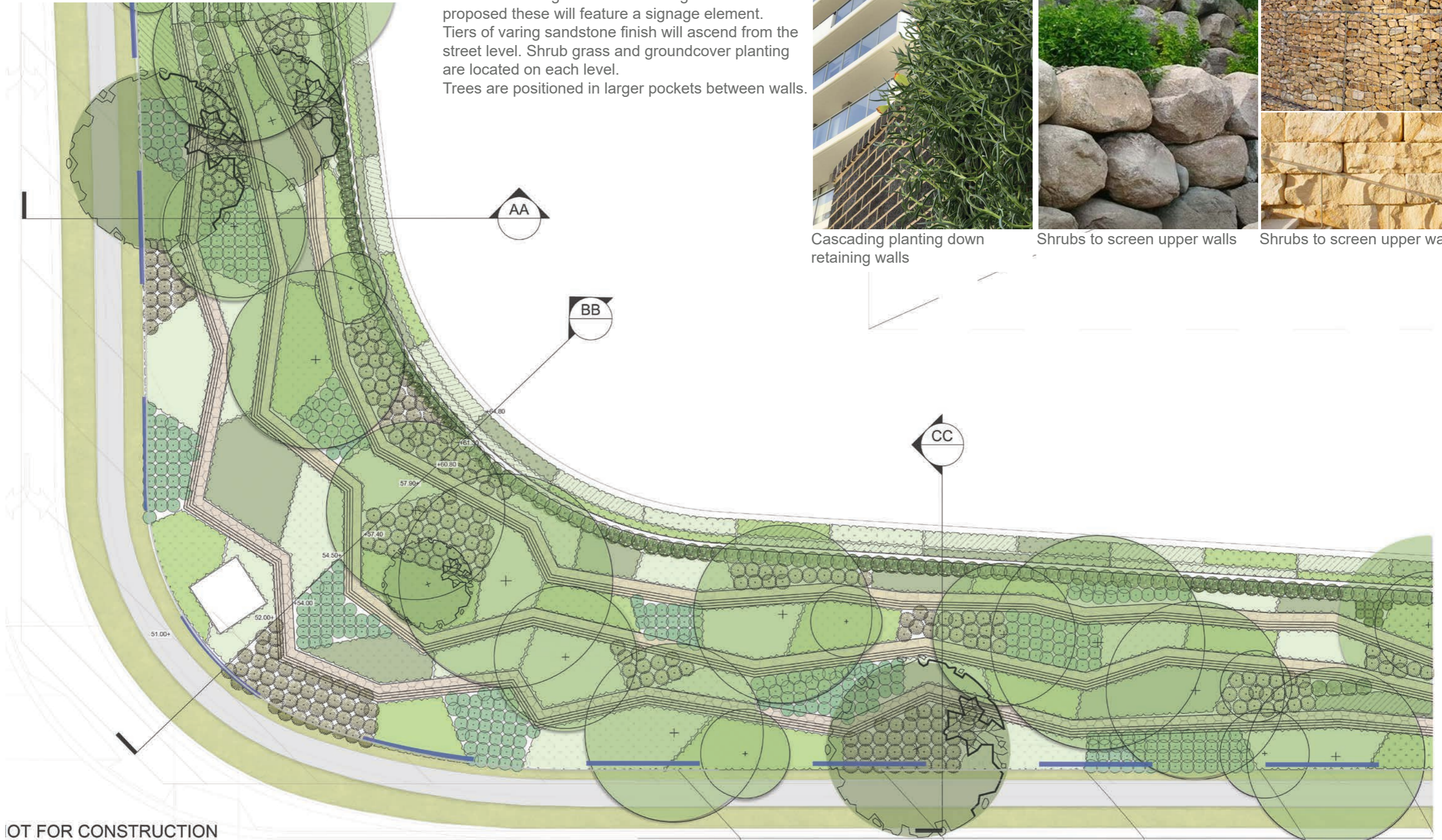
Cascading planting down retaining walls



Shrubs to screen upper walls

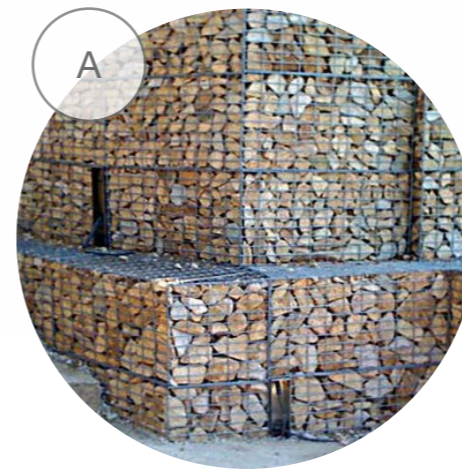
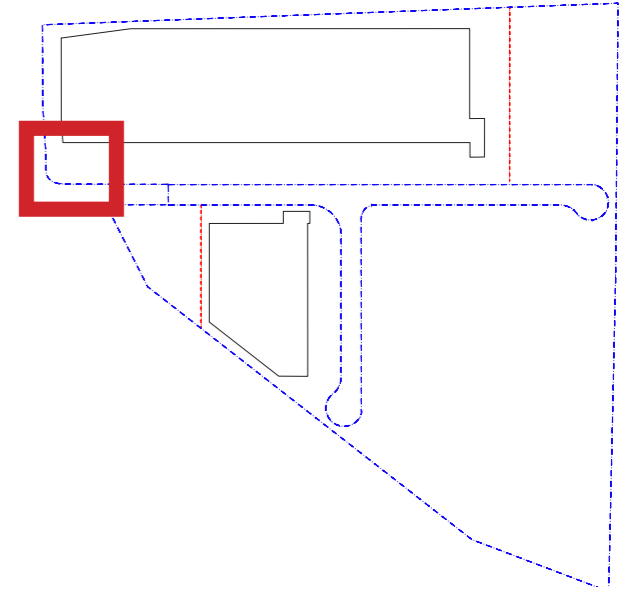
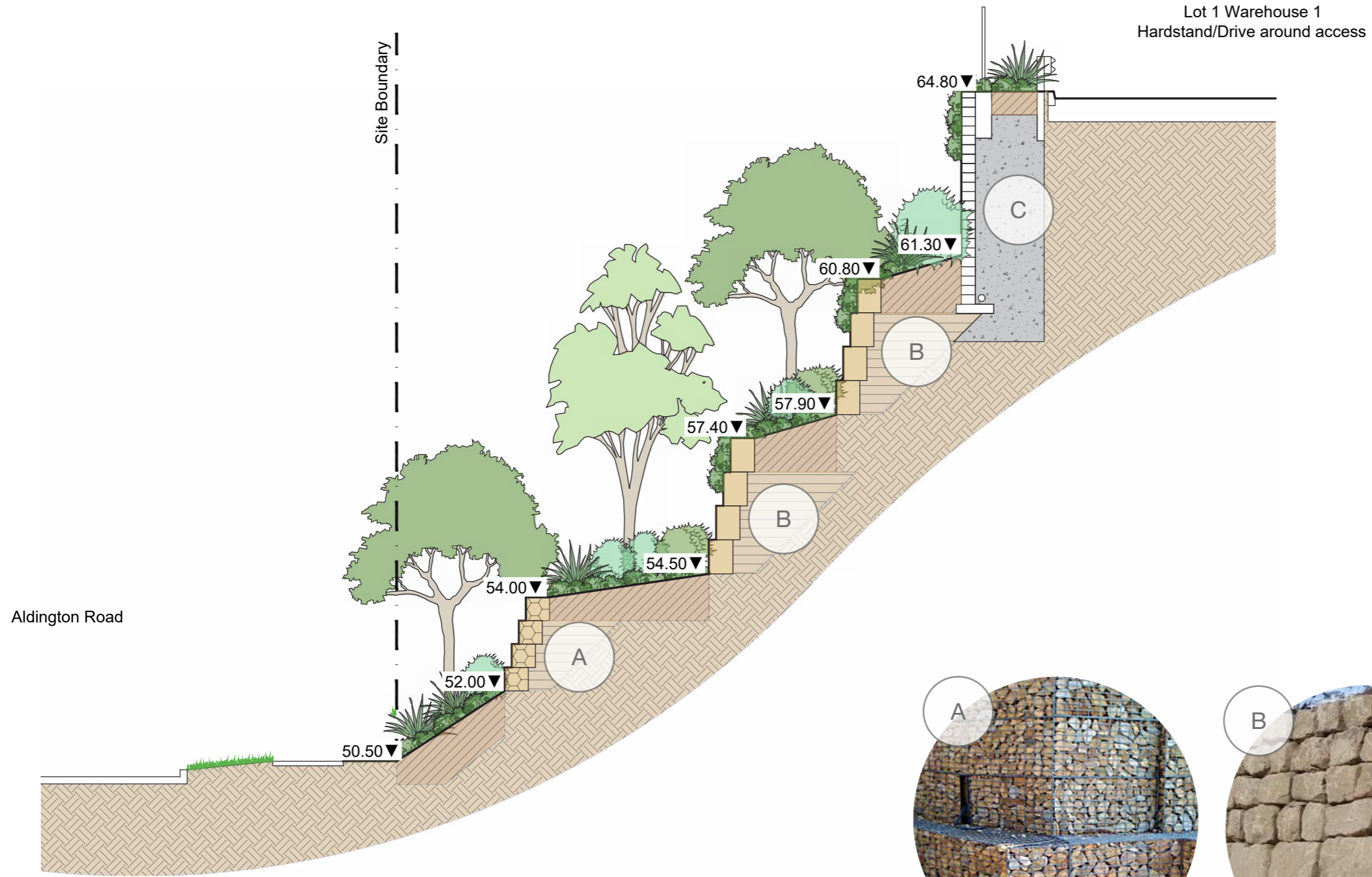


Shrubs to screen upper walls



NOT FOR CONSTRUCTION

Aldington Road Retaining Wall



Sandstone packed gabion wall

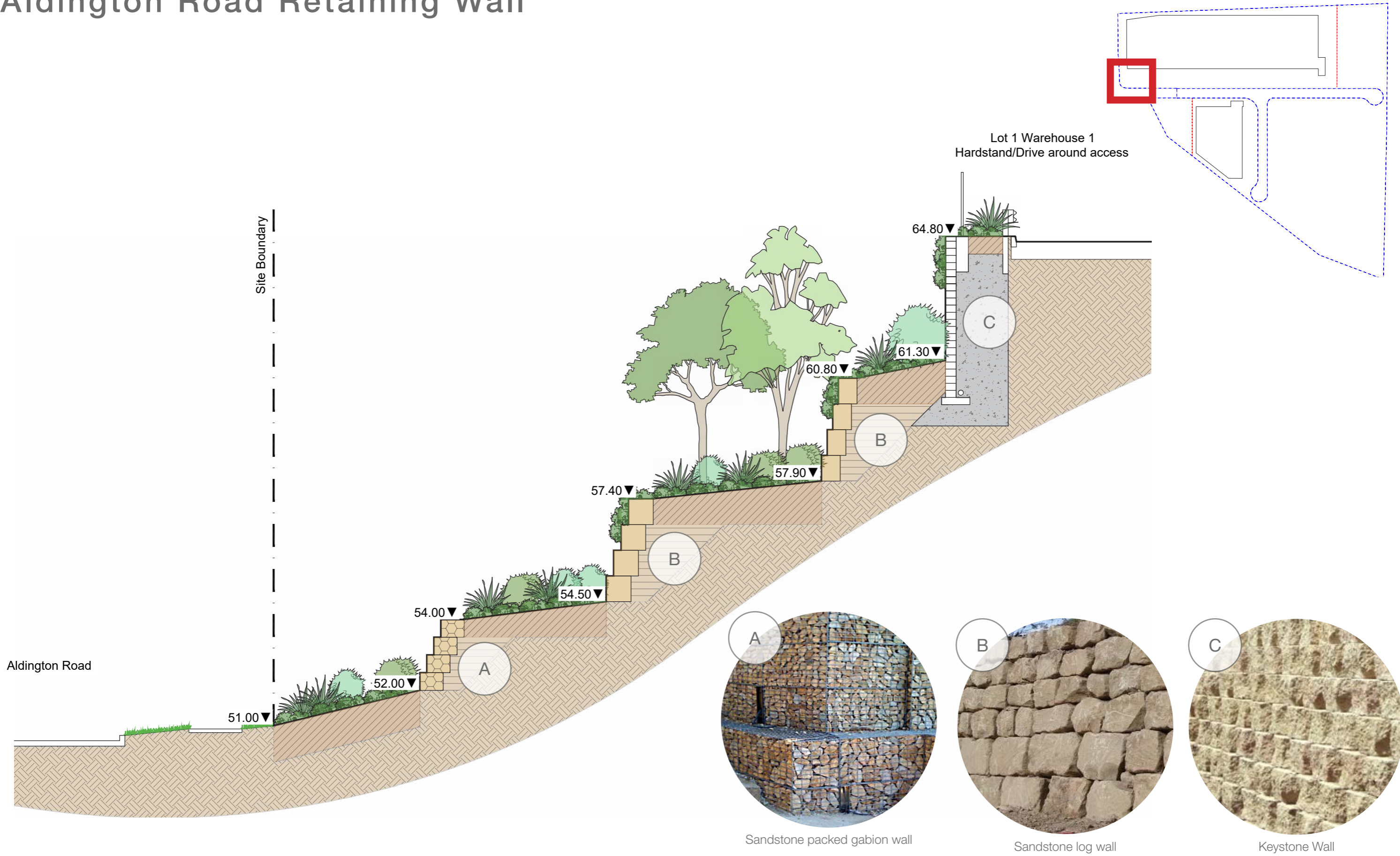


Sandstone log wall

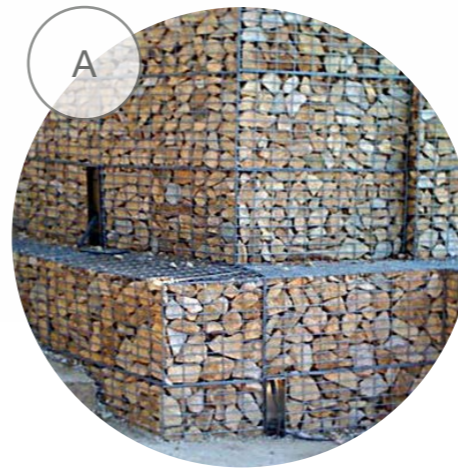
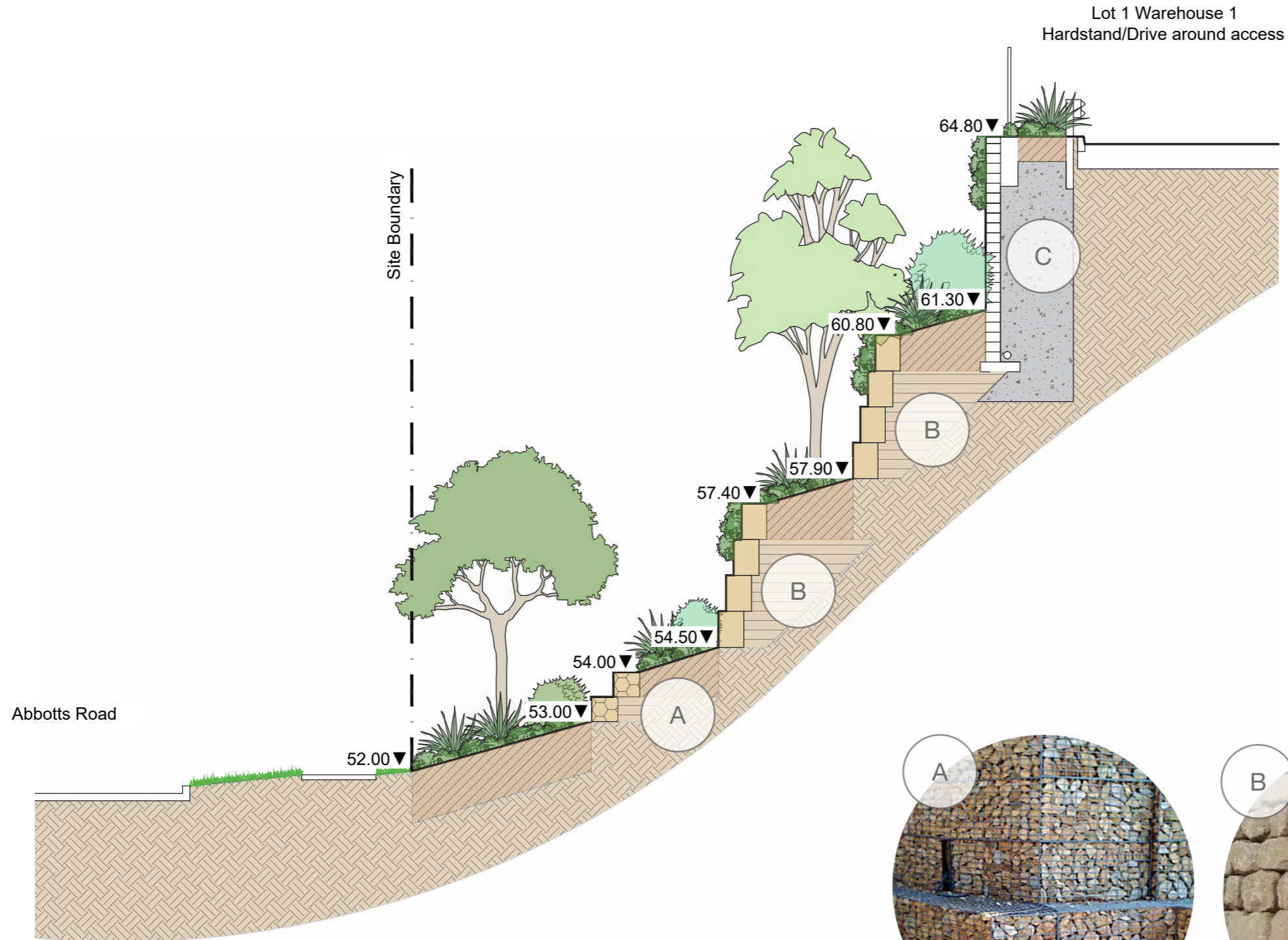
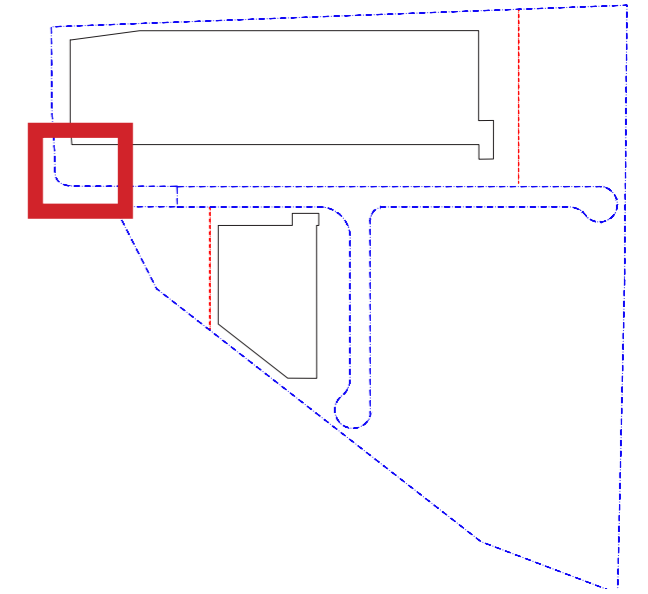


Keystone Wall

Aldington Road Retaining Wall



Aldington Road Retaining Wall



Sandstone packed gabion wall



Sandstone log wall



Keystone Wall



Indicative Plant Schedule

Proposed planting shall be a mixture of native and exotic species primarily chosen to be low maintenance and suitable for the local growing conditions. Proposed trees will be a combination of both evergreen and deciduous species, with deciduous positioned to allow for solar access in the winter and shade in the summer.

Street Trees

<i>Corymbia maculata</i>	Spotted Gum	20 x 8
--------------------------	-------------	--------

Trees

<i>Eucalyptus moluccana</i>	Grey Box	20 x 8
<i>Eucalyptus tereticornis</i>	Forest Red Gum	30 x .8
<i>Lagerstroemia indica</i>	Crepe Myrtle	8 x 4m
<i>Magnolia 'Little Gem'</i>		4 x 2.5m
<i>Melaleuca decora</i>	Feather Honey Myrtle	12 x 5m
<i>Melaleuca styphelioides</i>	Prickly Paperbark	10 x 4m

Shrubs

<i>Carissa macrocarpa 'Desert Star'</i>	Natal Plum	2 x 1m
<i>Callistemon 'Endevour'</i>	Bottlebrush	2.5 x 2.5
<i>Callistemon viminalis 'Little John'</i>	Little John Bottlebrush	.8 x 8
<i>Correa alba</i>	White Correa	1 x 1m
<i>Loropetalum 'Plum Gorgeous'</i>		1.5 x 2m
<i>Melaleuca 'Claret Tops'</i>	Honey Myrtle	1 x 1m
<i>Raphiolepis 'Oriental Pearl'</i>	Indian Hawthorne	.8 x 1m
<i>Westringia sp</i>	Coastal Rosemary	1.2 x 1.2
<i>Kalanchoe 'Silver Spoons'</i>		1.2 x 1.2m

Grasses and Groundcovers

<i>Adenanthos cuneatus 'Coral Carpet'</i>	Jug Flower	.2 x 1.5m
<i>Carpobrotus glaucescens</i>	Pigface	.3 x 2m
<i>Blue Fescue</i>	Festuca glauca	.4 x .4
<i>Gazania tomentosa</i>	Silver Leaf Gazania	.1 x 1
<i>Grevillea 'Poorinda Royal Mantle'</i>		.1 x 1m
<i>Hardenbergia violacea</i>	Purple Coral Pea	.2 x 3m
<i>Hibbertia scandens</i>		.3 x 1m
<i>Liriope 'Evergreen Giant'</i>		.6 x .6
<i>Lomandra 'Tanika'</i>	Tanika Mat-Rush	.6 x .6
<i>Myoporum parvifolium</i>	Creeping Boobiolla	
<i>Pennisetum Rubrum</i>	Fountain Grass	.9 x .6
<i>Society Garlic</i>	Tulbaghia violacea	.3 x .3



Corymbia maculata



Eucalyptus moluccana



Melaleuca decora



Magnolia 'Little Gem'



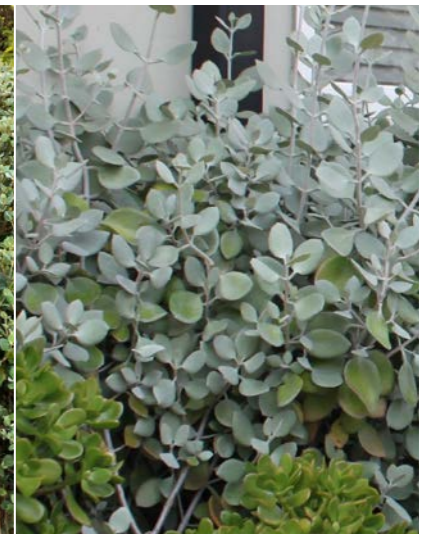
Raphiolepis 'Oriental Pearl'



Carpobrotus glaucescens



Correa alba



Kalanchoe 'Silver Spoons'



Liriope 'Evergreen Giant'



Hardenbergia violacea



Lomandra 'Tanika'



Westringia sp