



Hi Scientists!

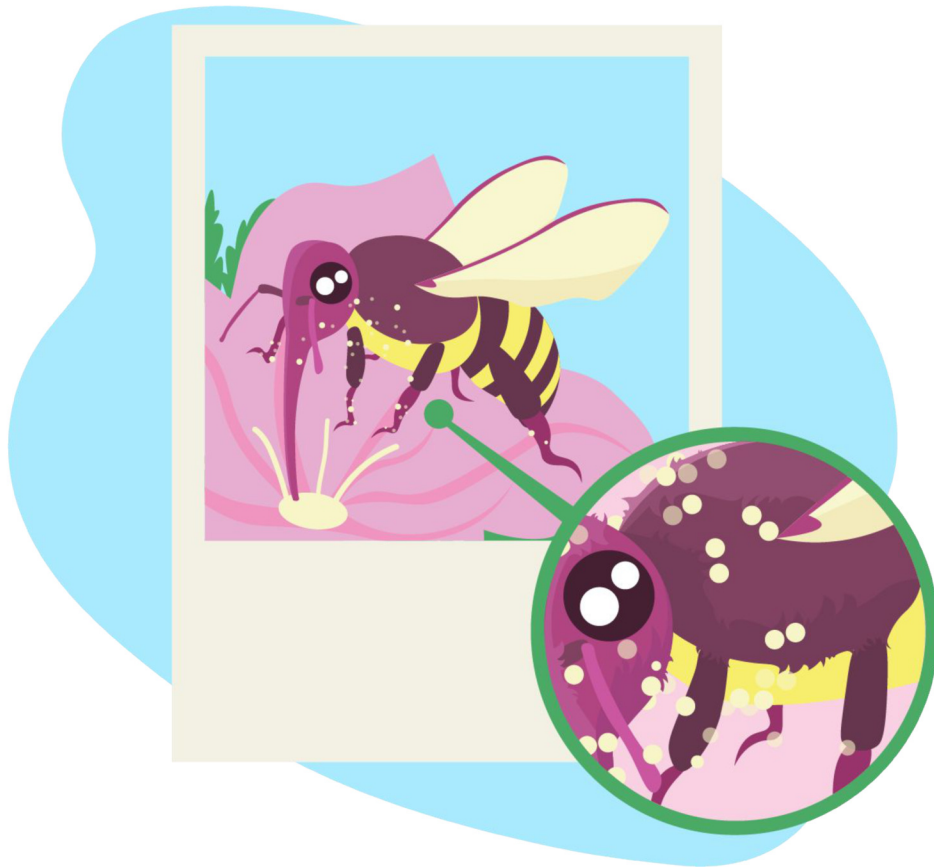
I have to say a supralandian flower meadow is a *pretty peculiar place*. It is beautiful and all, but all I can hear is BZZZZ and BZZZZ and again BZZZZ! What IS this sound? Has Hoseli malfunctioned again?



Wait a minute... Are those...bees? Yes!
We have them on Earth as well! I'll attach a photo for you.



The bees here are jumping from flower to flower, and one of them accidentally just flew *on my hand*. But, I noticed something funny: the bee had some kind of weird dust on its fur... How messy!



Or could the dust be *something else*? And *where* did the dust come from?

I need your help to figure out the mystery of the messy bee!



Greetings,
Esther
