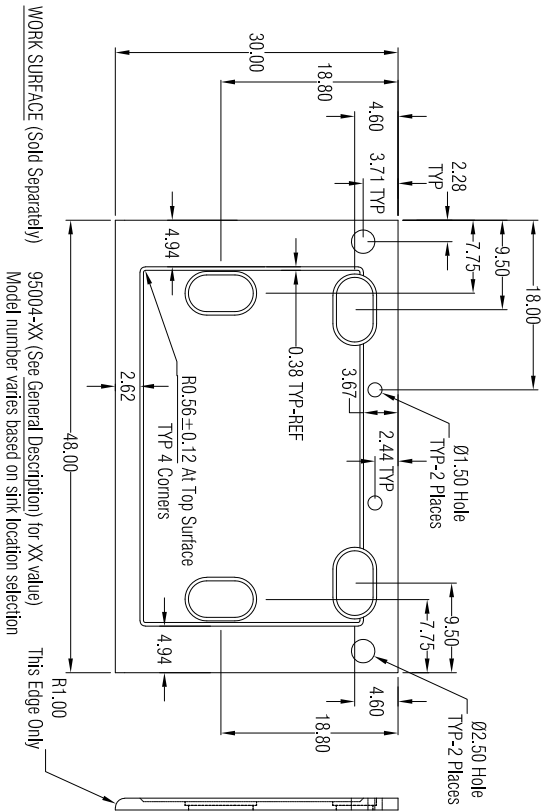
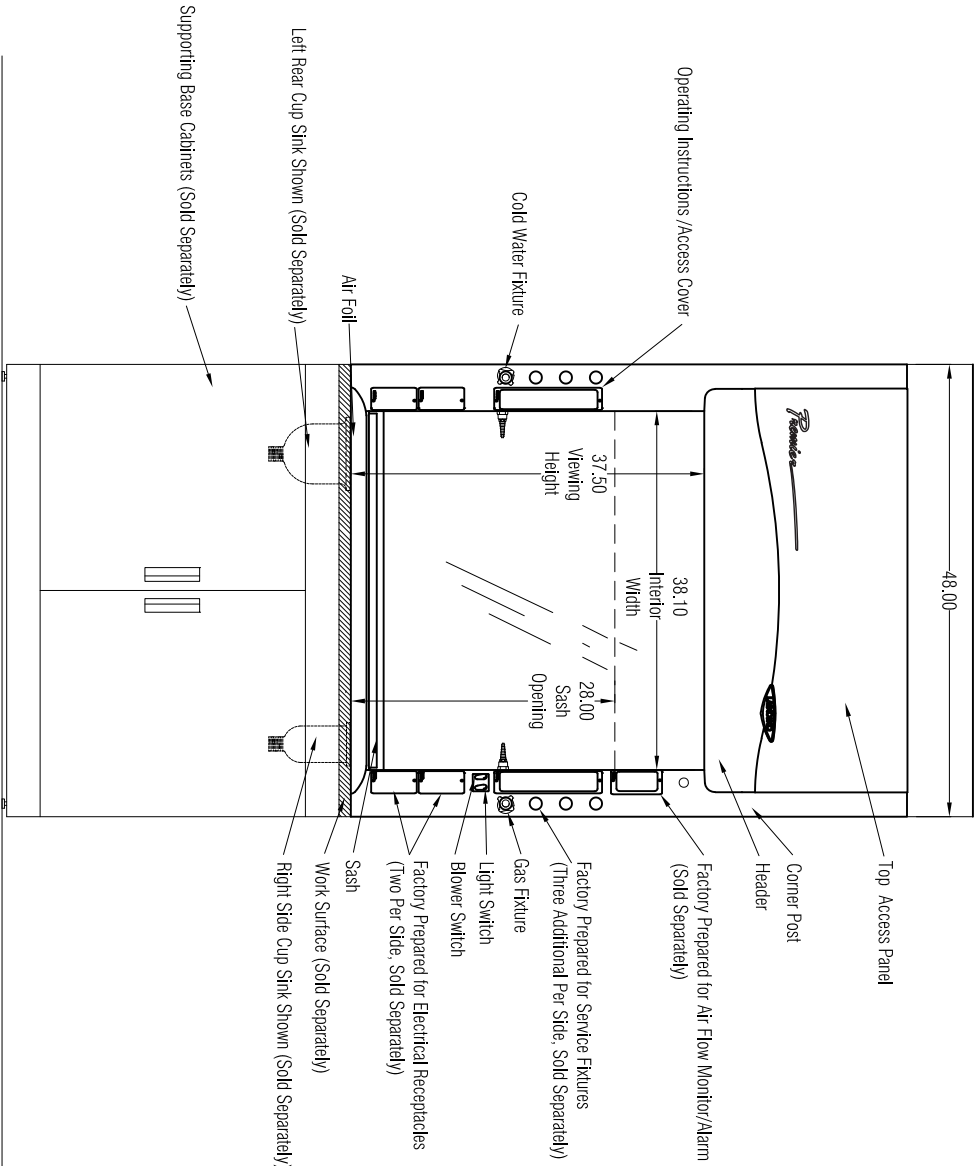


TOP VIEW

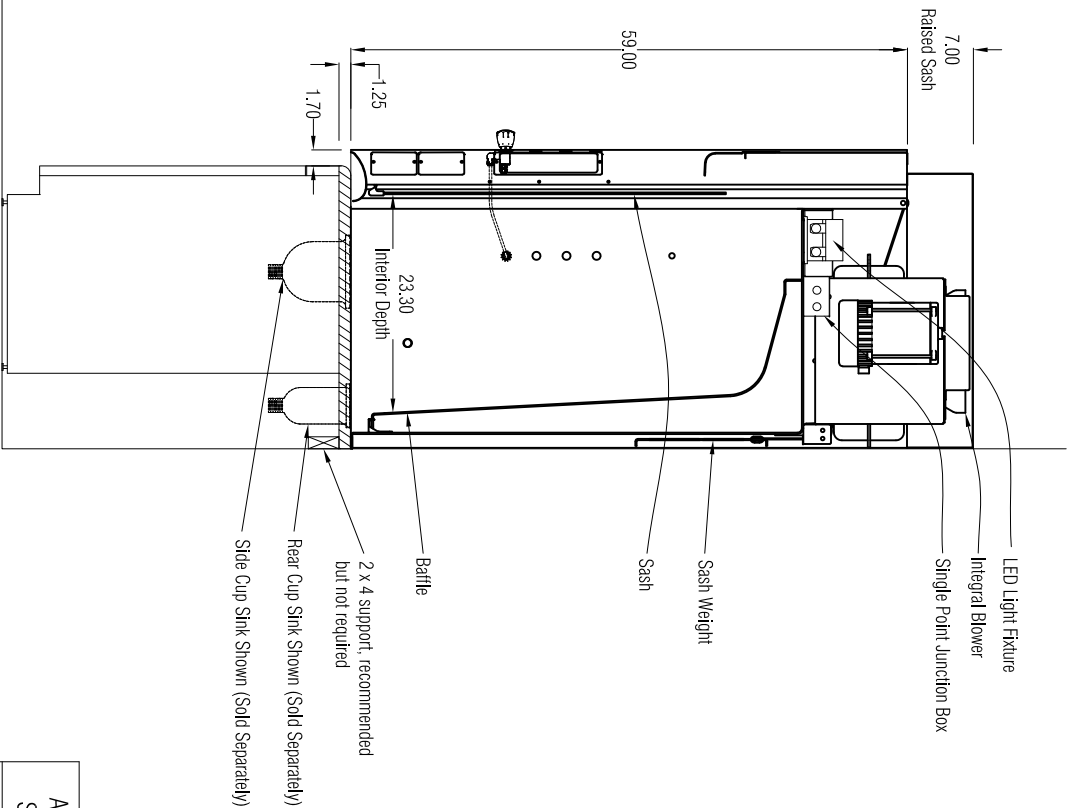


WORK SURFACE (Solid Separately)

95004-XX (See General Description) for XX value)
Model number varies based on sink location selection



FRONT VIEW



SIDE VIEW

GENERAL DESCRIPTION

- 4' Protector Premier Hood with Integral Blower
Model: 100400061
- Exterior Superstructure
* Double Wall Construction * Cold Rolled Steel
Interior Superstructure
* Galvanized Steel (standard)
Left / Right Facia.
* Powder Coated Steel * Color: Glacier White
Liner Material
* Molded Fiberglass Reinforced Polyester Resin
Side Panels
* Both Sides * Removable * Color: Glacier White
Baffles
* Molded Fiberglass Reinforced Polyester Resin
Interior Access Panels
* None
Corner Post with Access Covers
* Right and Left Sides
* Cold Rolled Steel
Air Foil
* Cold Rolled Steel * Powder Coat Finish
SASH
* Vertical Travel
* Tempered Safety Glass
* Counter Weighted and Balanced
* Pulley System
Electrical Fixtures
* LED Light and Tubes w/ Switch
Alarm / Monitor (Sold Separately)
* Factory Prepared for Air Flow Monitor/Alarm
Wiring
* Fume Hood Wired at Factory
* Electrical Connection made inside 4x7' Junction Box
* 208-230, 60 Hz
Service Fixtures
* Labconco * Color-Coded Hooded Handle * Front Loading
* Ports included to convert standard fixtures to Vacuum or Air
- | Symbol | Service | Color |
|--------|----------------|--------|
| CW | Cold Water | Green |
| Gas | Gas | Blue |
| Air | Compressed Air | Orange |
| Vac | Vacuum | Yellow |
- Plumbing
* Connections Made with Swagelok Compression Fittings
* Final connection by others
* Pre-tipped to Valve, Outlet / 4" Copper Tubing
* Standard Water Supply is 1/2" Copper Tubing
* Air and Vac Piping is 1/4" Brass Tubing
* Standard Gas Piping is 1/4" Brass Tubing
Work Surface (Sold Separately)
* Black Epoxy Work surface, Model 95004-XX (See below for XX)
* # 00 - No cup sink cutouts
* # 01 - Cup sink cutout right rear location
* # 02 - Cup sink cutout right side location
* # 10 - Cup sink cutout left rear location
* # 11 - Cup sink cutouts left and right rear locations
* # 22 - Cup sink cutouts left and right side locations
Cup Sink (Sold Separately)
* Black Oval Polypropylene Cupsink, 3" x 6", # 4005200
Required Accessories (Sold Separately)
* Remote Blower
* Supporting Base



LABCONCO CORPORATION • KANSAS CITY MO USA 64132
800-821-5525 / 816-333-8811 • labconco.com

FUME HOODS for:

Airflow Volumetric Rate (CFM) @ Static Pressure (inches of water)		Nominal Ductwork Diameter	Equivalent Resistance†	HP
Face Velocity (fpm)	100% open (28")			
100	725 @ 0.17"	10"	75	1/3

†In feet of straight duct

Rev	Date
Date: June 2023	
Drawing # 100400061	
SCALE: Scaled to fit	
Assembly and Crating * Pre-Assembled * Polietized	
Drawn By: C. Alumbaugh	
Checked By:	
Approved By:	
Sheet No.	