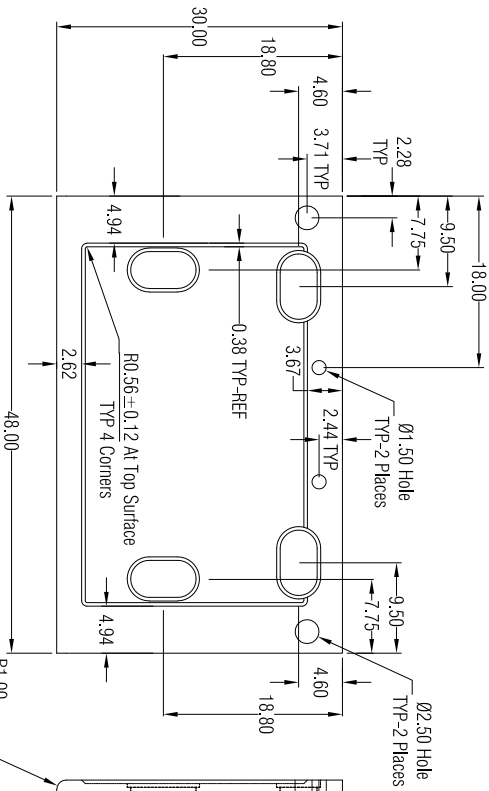


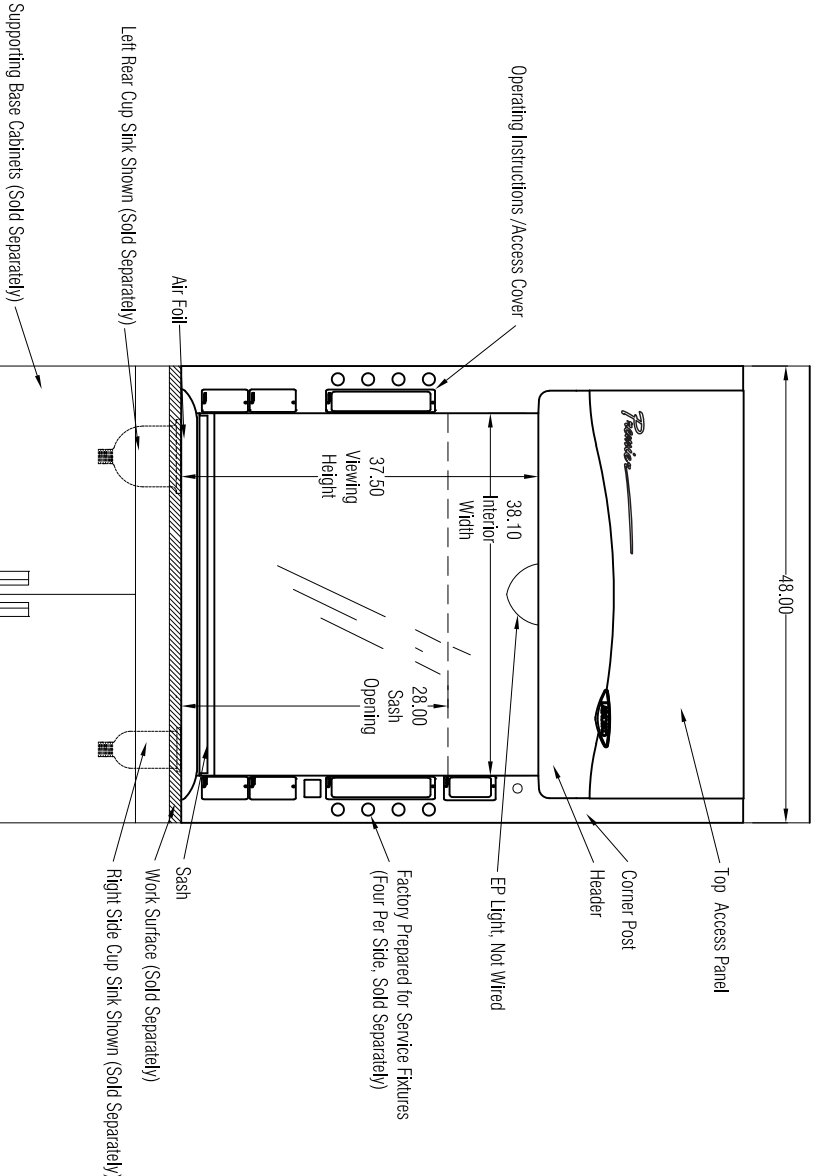
TOP VIEW



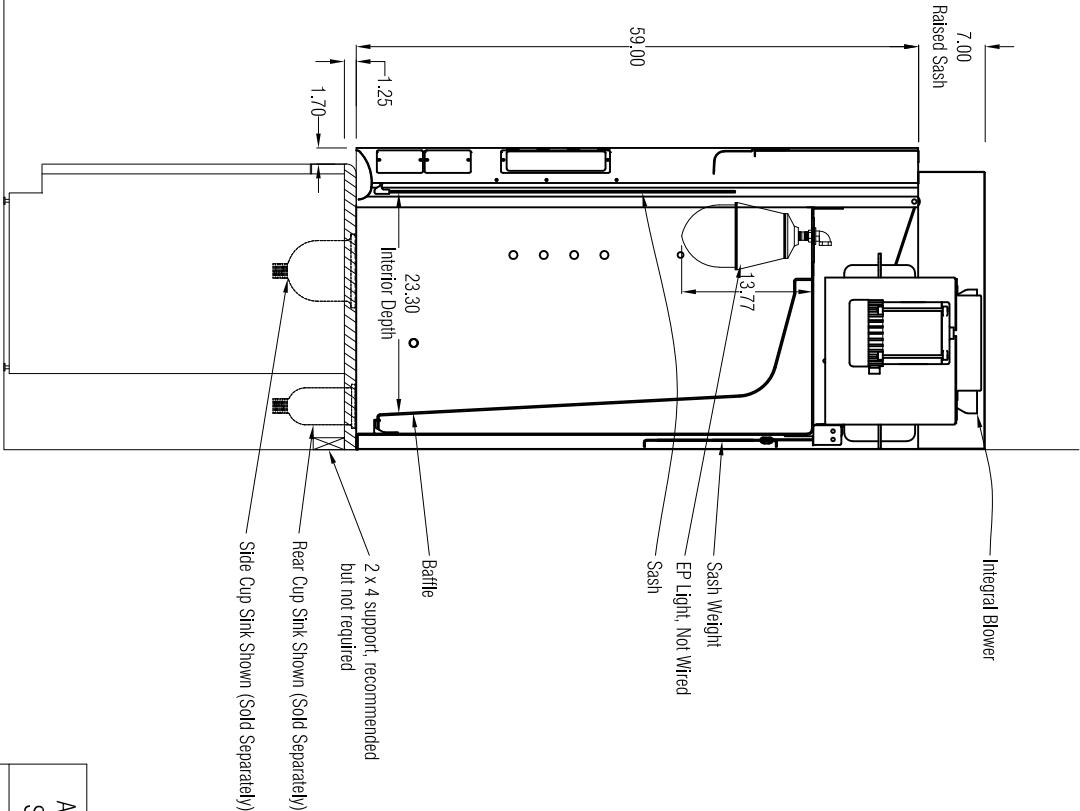
WORK SURFACE (Sold Separately) 95004-XX (See General Description) for XX value) Model number varies based on sink location selection

GENERAL DESCRIPTION

- 4' Protector Premier Hood with Integral Blower
- Model: 100400070
- Exterior Superstructure
 - * Double Wall Construction
 - * Cold Rolled Steel
- Interior Superstructure
 - * Galvanized Steel (standard)
- Left / Right Facia:
 - * Powder Coated Steel * Color: Glacier White
- Liner Material
 - * Molded Fiberglass Reinforced Polyester Resin
- Side Panels
 - * Both Sides * Removable * Color: Glacier White
- Baffles
 - * Molded Fiberglass Reinforced Polyester Resin
- Interior Access Panels
 - * None
- Corner Post with Access Covers
 - * Right and Left Sides
- * Cold Rolled Steel
- Air Foil
 - * Cold Rolled Steel * Powder Coat Finish
- Sash
 - * Vertical Travel
 - * Tempered Safety Glass
 - * Counter Weighted and Balanced
 - * Pulley System
- Electrical Fixtures
 - * Explosion Proof Light Fixture (Bulb not included)
 - Alarm / Monitor
 - * None Provided
- Wiring
 - * No internal wiring/switches are included as hood is EP rated
 - * Blower and EP light to be wired in the field to meet local codes
 - * 100-115V, 60 Hz
- Service Fixtures (Sold Separately)
 - * Factory Prepared for Service Fixtures, Four Per Side
- Work Surface (Sold Separately)
 - * Black Epoxy Work Surface, Model 95004-XX (See below for XX)
 - * # 00 – No cup sink cutouts
 - * # 01 – Cup sink cutout right rear location
 - * # 02 – Cup sink cutout right side location
 - * # 10 – Cup sink cutout left rear location
 - * # 20 – Cup sink cutouts left side location
 - * # 11 – Cup sink cutouts left and right rear locations
 - * # 22 – Cup sink cutouts left and right side locations
- Cup Sink (Sold Separately)
 - * Black Oval Polypropylene Cupsink, 3" x 6", # 4005200
 - * Required Accessories (Sold Separately)
 - * Remote Blower
 - * Supporting Base



FRONT VIEW



SIDE VIEW

| Airflow Volumetric Rate (CFM) @ Static Pressure (inches of water) | | |
|---|---------------------------|------------------------|
| Face Velocity (fpm) | Nominal Ductwork Diameter | Equivalent Resistance† |
| 100 | 725 @ 0.17" | 10" |
| | | 75 |
| | | 1/3 |

†In feet of straight duct



LABCONCO CORPORATION • KANSAS CITY MO USA 64132
800-821-5525 / 816-333-8811 • labconco.com

FUME HOODS for:

Rev _____ Date _____

Date: _____
June 2023

Drawing # _____
100400070

Drawn By: _____
C. Alumbaugh

Checked By: _____

Approved By: _____

Sheet No. _____