

GENERAL DESCRIPTION

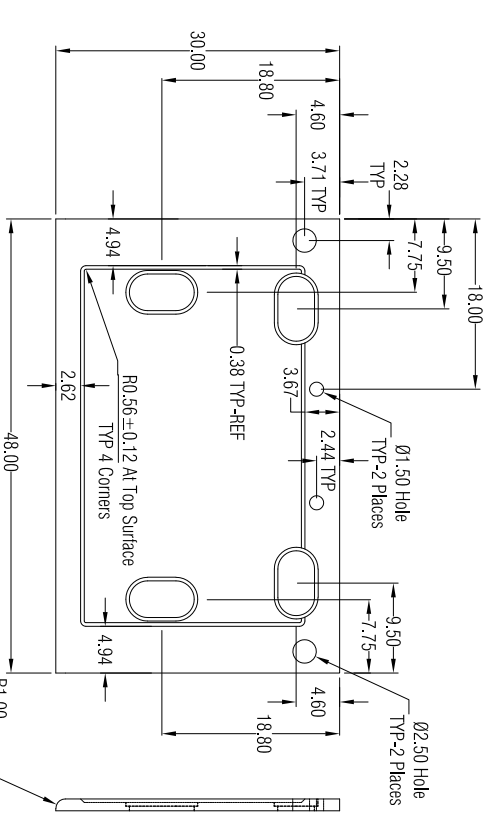
- 4' Protector Premier Hood with Integral Blower
- Model: 100400040
- Exterior Superstructure
 - * Double Wall Construction
 - * Cold Rolled Steel
- Interior Superstructure
 - * Galvanized Steel (standard)
- Left / Right Facia:
 - * Powder Coated Steel
 - * Color: Glacier White
- Liner Material
 - * Molded Fiberglass Reinforced Polyester Resin
- Side Panels
 - * Both Sides
 - * Removable
 - * Color: Glacier White
- Baffles
 - * Molded Fiberglass Reinforced Polyester Resin
- Interior Access Panels
 - * None
- Corner Post with Access Covers
 - * Right and Left Sides
- Cold Rolled Steel
 - * Cold Rolled Steel
- Air Foil
 - * Cold Rolled Steel
 - * Powder Coat Finish
- Sash
 - * Vertical Travel
 - * Tempered Safety Glass
 - * Counter Weighted and Balanced
 - * Pulley System
- Electrical Fixtures
 - * LED Light and Tubes w/ Switch
 - * Alarm / Monitor (Sold Separately)
 - * Factory Prepared for Air Flow Monitor/Alarm
- Wiring
 - * Fume Hood Wired at Factory
 - * Electrical Connection made inside 4x7 Junction Box
 - * 100-115V, 60 Hz
- Service Fixtures (Sold Separately)
 - * Factory Prepared for Service Fixtures, Four Per Side
- Work Surface (Sold Separately)
 - * Black Epoxy Work Surface, Model 95004-XX (See below for XX)
 - * # 00 - No cup sink cutouts
 - * # 01 - Cup sink cutouts rear location
 - * # 02 - Cup sink cutout right side location
 - * # 10 - Cup sink cutout left rear location
 - * # 20 - Cup sink cutouts left and right rear locations
 - * # 11 - Cup sink cutouts left and right rear locations
 - * # 22 - Cup sink cutouts left and right side locations
- Cup Sink (Sold Separately)
 - * Black Oxal Polypropylene Cup Sink, 3" x 6", # 4005200
 - * Required Accessories (Sold Separately)
 - * Remote Blower
 - * Supporting Base

- Assembly and Crating
 - * Pre-Assembled
 - * Palletized
- SCALE: Scaled to fit
- Date: June 2023
- Drawing # 100400040
- Drawn By: C. Alumbaugh
- Checked By:
- Approved By:
- Sheet No.



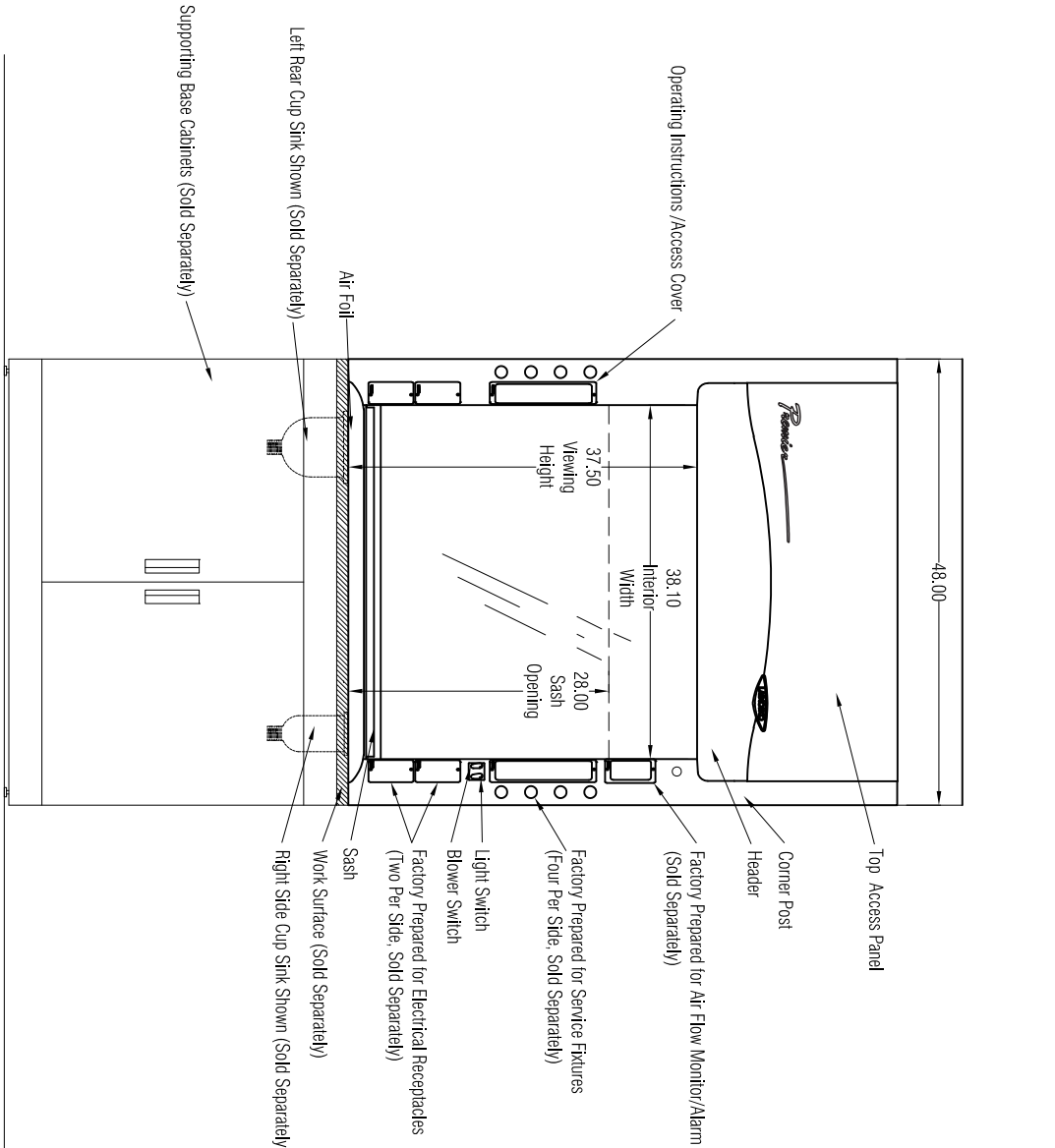
LABCONCO CORPORATION • KANSAS CITY MO USA 64132
800-821-5525 / 816-333-8811 • labconco.com

FUME HOODS for:

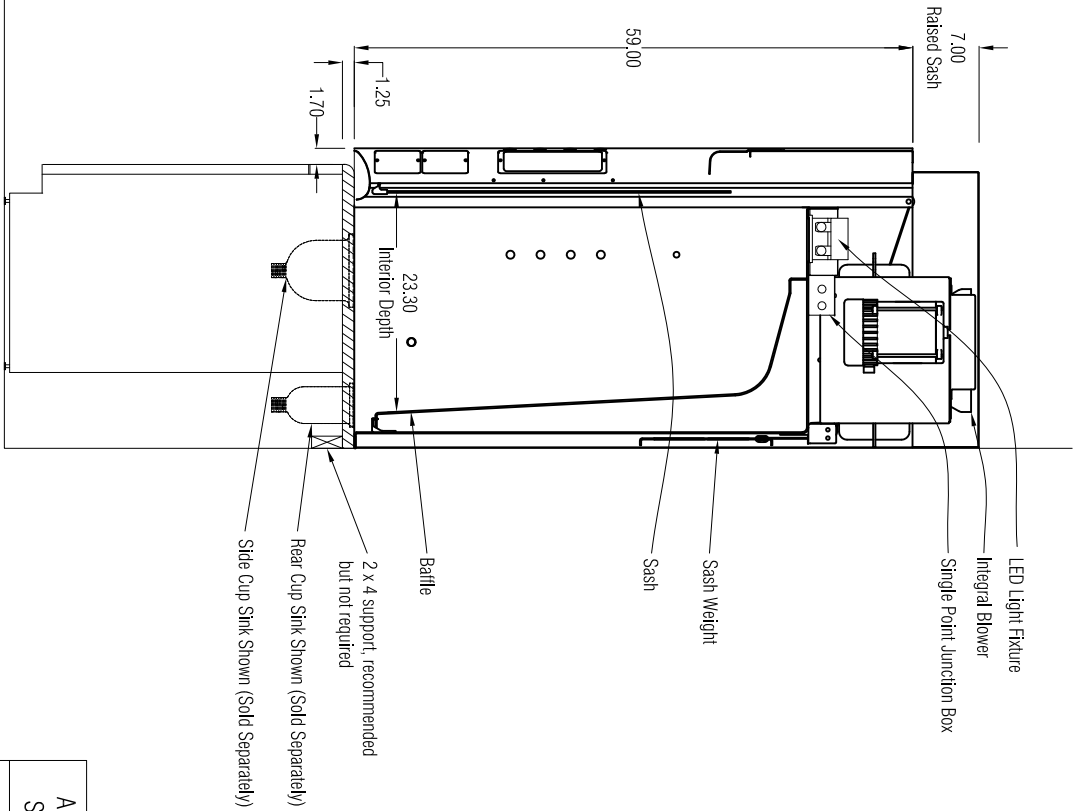


TOP VIEW

WORK SURFACE (Sold Separately) 95004-XX (See General Description) for XX value)
Model number varies based on sink location selection



FRONT VIEW



SIDE VIEW

Airflow Volumetric Rate (CFM) @ Static Pressure (inches of water)		Nominal Ductwork Diameter	Equivalent Resistance†	HP
Face Velocity (fpm)	100% open (28")			
100	725 @ 0.17"	10"	75	1/3

†In feet of straight duct