

GENERAL DESCRIPTION

4' Protector XStream Laboratory Hood
Model: 110410021

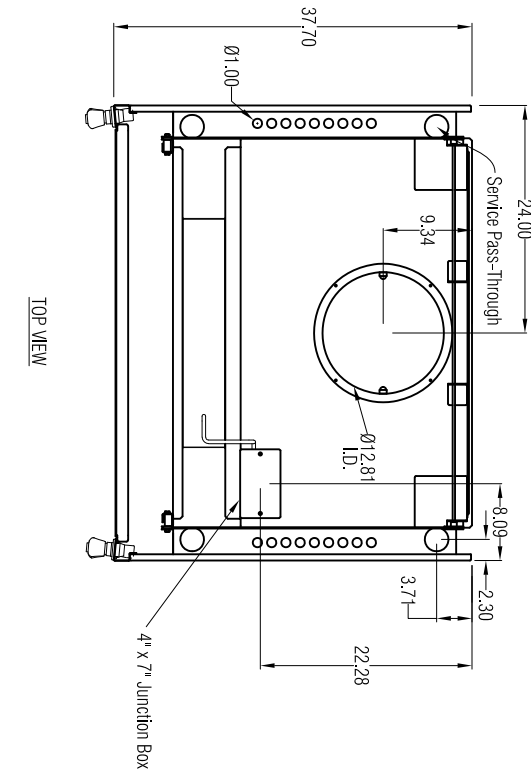
- Exterior Superstructure
 - * Double Wall Construction
 - * Cold Rolled Steel
- Interior Superstructure
 - * Galvanized Steel (standard)
- Left / Right Facia:
 - * Powder Coated Steel
 - * Color: Glacier White
- Liner Material:
 - * Molded Composite Sheet
- Side Panels:
 - * Both Sides
 - * Removable
 - * Color: Glacier White
- Baffles
 - * Molded Composite Sheet
- Interior Access Panels:
 - * Right and Left Sides
- Gasket Provided
 - * Corner Post with Access Covers
- * Right and Left Sides
 - * Cold Rolled Steel
- Air Foil
 - * Cold Rolled Steel
 - * Powder Coat Finish
- Sash:
 - * Vertical Travel
 - * Tempered Safety Glass
 - * Counter Weighted and Balanced
- Pulley System
 - * Sash Stop @ 18"

- Electrical Fixtures
 - * LED Light with Switch
- Alarm / Monitor (Sold Separately)
 - * Factory Prepared for Air Flow Monitor/Alarm
- Wiring
 - * Furne Hood Wired at Factory
 - * Electrical Connection made inside 4x7 Junction Box
 - * 208-230, 50/60 Hz
- VAV Preparations
 - * Restricted Bypass for VAV

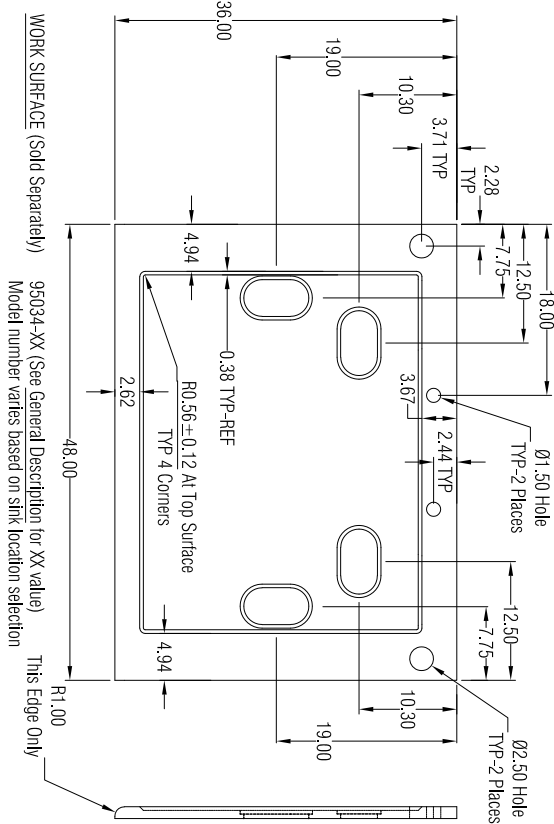
- Service Fixtures
 - * Labconco * Color-Coded Hooded Handle
 - * Front Loading
 - * Ports included to convert standard fixtures to Vacuum or Air

Symbol	Service	Color
CW	Cold Water	Green
Gas	Gas	Blue
Air	Compressed Air	Orange
Vac	Vacuum	Yellow

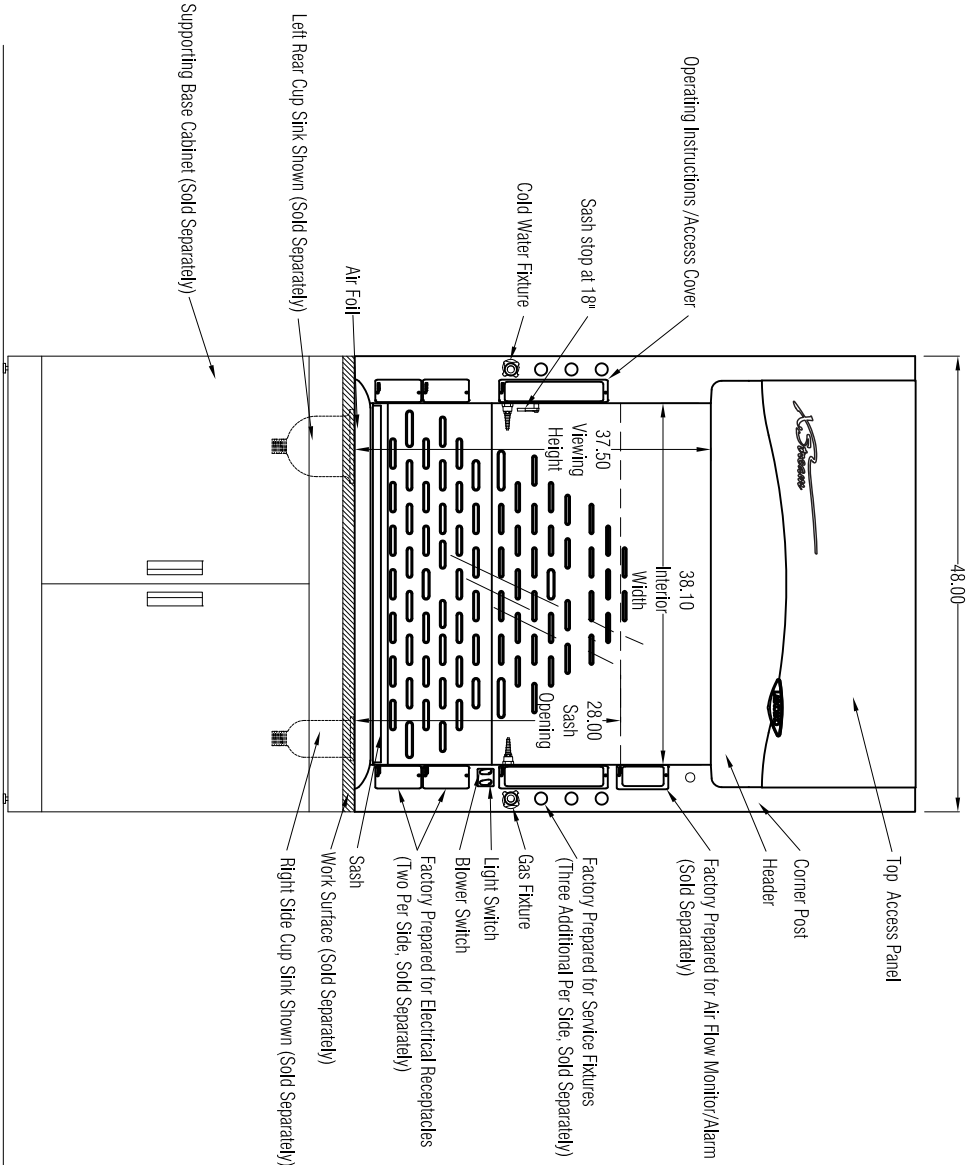
- Plumbing
- * Connections Made with Swagelok Compression Fittings
 - * Final connection by others
 - * Pre-Piped to Valve Outlet
 - * Standard Water Piping is 1/4" Copper Tubing
 - * Air and Vac Piping is 1/4" Copper Tubing
 - * Standard Gas Piping is 1/4" Brass Tubing
- Work Surface (Sold Separately)
- * Black Epoxy Work Surface, Model 95034-XX (See below for XX)
 - * # 00 – No cup, sink cutouts
 - * # 01 – Cup sink cutout right rear location
 - * # 02 – Cup sink cutout right side location
 - * # 10 – Cup sink cutout left rear location
 - * # 20 – Cup sink cutout left side location
 - * # 11 – Cup sink cutouts left and right rear locations
 - * # 22 – Cup sink cutouts left and right side locations
- Cup, Sink (Sold Separately)
- * Black Oxid Polypropylene Cup/sink, 3" x 6", # 4005200
- Required Accessories (Sold Separately)
- * Remote Blower
 - * Supporting Base



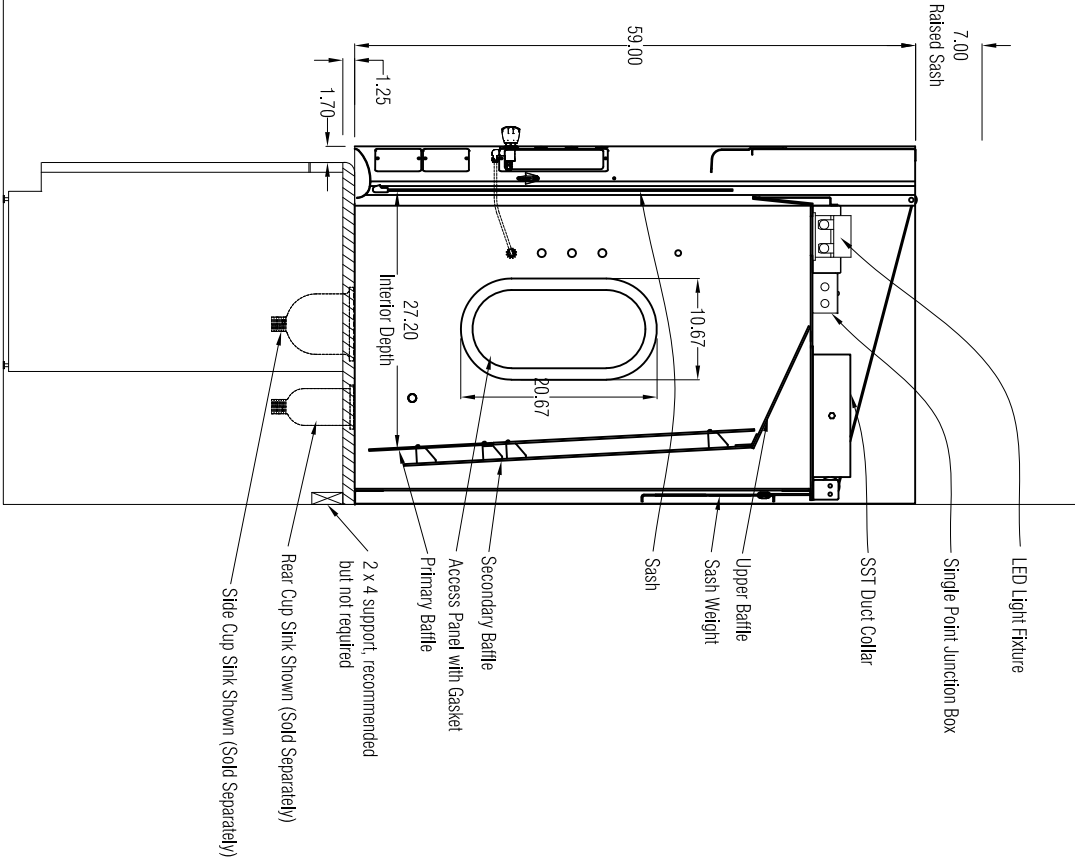
TOP VIEW



WORK SURFACE (Sold Separately) 95034-XX (See General Description for XX value)
Model number varies based on sink location selection



FRONT VIEW



SIDE VIEW

Face Velocity (fpm)	Airflow Volumetric Rate (CFM) @ Static Pressure (inches of water)	
	100% open (28")	62.5% open (18")
100	705 @ 0.26"	440 @ 0.10"
80	565 @ 0.17"	350 @ 0.06"
60	425 @ 0.09"	265 @ 0.04"

Assembly and Crating
* Pre-Assembled
* Palletized

SCALE:

Scaled to fit



LABCONCO CORPORATION • KANSAS CITY MO USA 64132
800-821-5525 / 816-333-8811 • labconco.com

FUME HOODS for:

Rev _____ Date _____

Date: June 2023

Drawing # 110410021

Drawn By: C. Alumbaugh

Checked By: _____

Approved By: _____

Sheet No. _____