

GENERAL DESCRIPTION

4' Protector Premier Hood with Integral Blower
Model: 100400060

- * Double Wall Construction
- * Cold Rolled Steel Exterior Superstructure
- * Interior Superstructure
- * Galvanized Steel (standord)
- * Left / Right Facia:
- * Powder Coated Steel
- * Color: Glacier White
- * Liner Material
- * Molded Fiberglass Reinforced Polyester Resin Side Panels
- * Both Sides
- * Removable
- * Color: Glacier White
- * Buffles
- * Molded Fiberglass Reinforced Polyester Resin Interior Access Panels
- * None
- * Corner Post with Access Covers
- * Right and Left Sides
- * Cold Rolled Steel
- * Air Foil
- * Cold Rolled Steel
- * Powder Coat Finish
- * Sash
- * Vertical Travel
- * Tempered Safety Glass
- * Counter Weighted and Balanced
- * Pulley System
- * Electrical Fixtures
- * LED Light and Tubes w/ Switch
- * Alarm / Monitor (Sold Separately)
- * Factory Prepared for Air Flow Monitor/Alarm Wiring
- * Fume Hood Wired at Factory
- * Electrical Connection made inside 4x7 Junction Box
- * 208-230, 60 Hz
- * Service Fixtures (Sold Separately)
- * Factory Prepared for Service Fixtures, Four Per Side
- * Work Surface (Sold Separately)
- * Block Epoxy Work Surface, Model 95004-XX (See below for XX)
- * # 00 - No cup sink cutouts
- * # 01 - Cup sink cutout right rear location
- * # 02 - Cup sink cutout left rear location
- * # 10 - Cup sink cutout left side location
- * # 20 - Cup sink cutout left and right rear locations
- * # 11 - Cup sink cutouts left and right rear locations
- * # 22 - Cup sink cutouts left and right side locations
- * Cup Sink (Sold Separately)
- * Block Oval Polypropylene Cupsink, 3" x 6", # 4005200
- * Required Accessories (Sold Separately)
- * Remote Blower
- * Supporting Base

FUME HOODS for:



Rev _____ Date _____

Date: June 2023

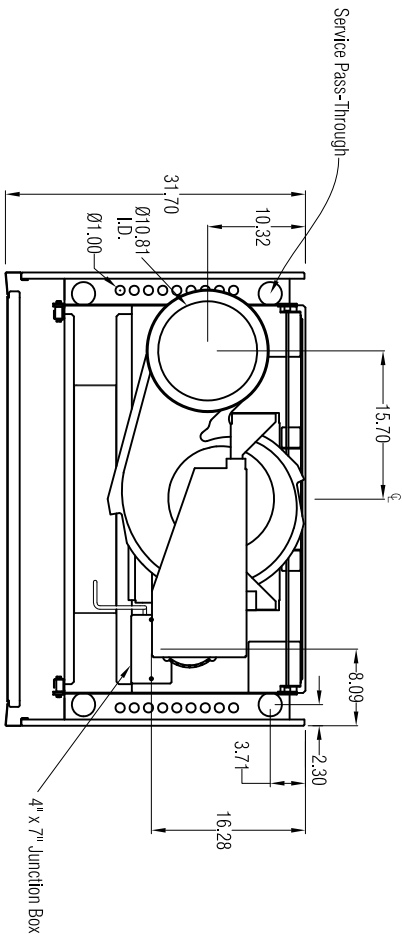
Drawing # 100400060

Drawn By: C. Alumbaugh

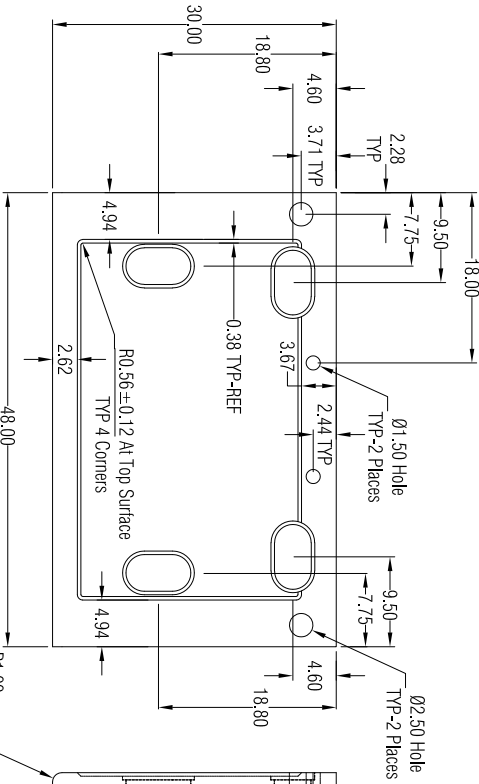
Checked By: _____

Approved By: _____

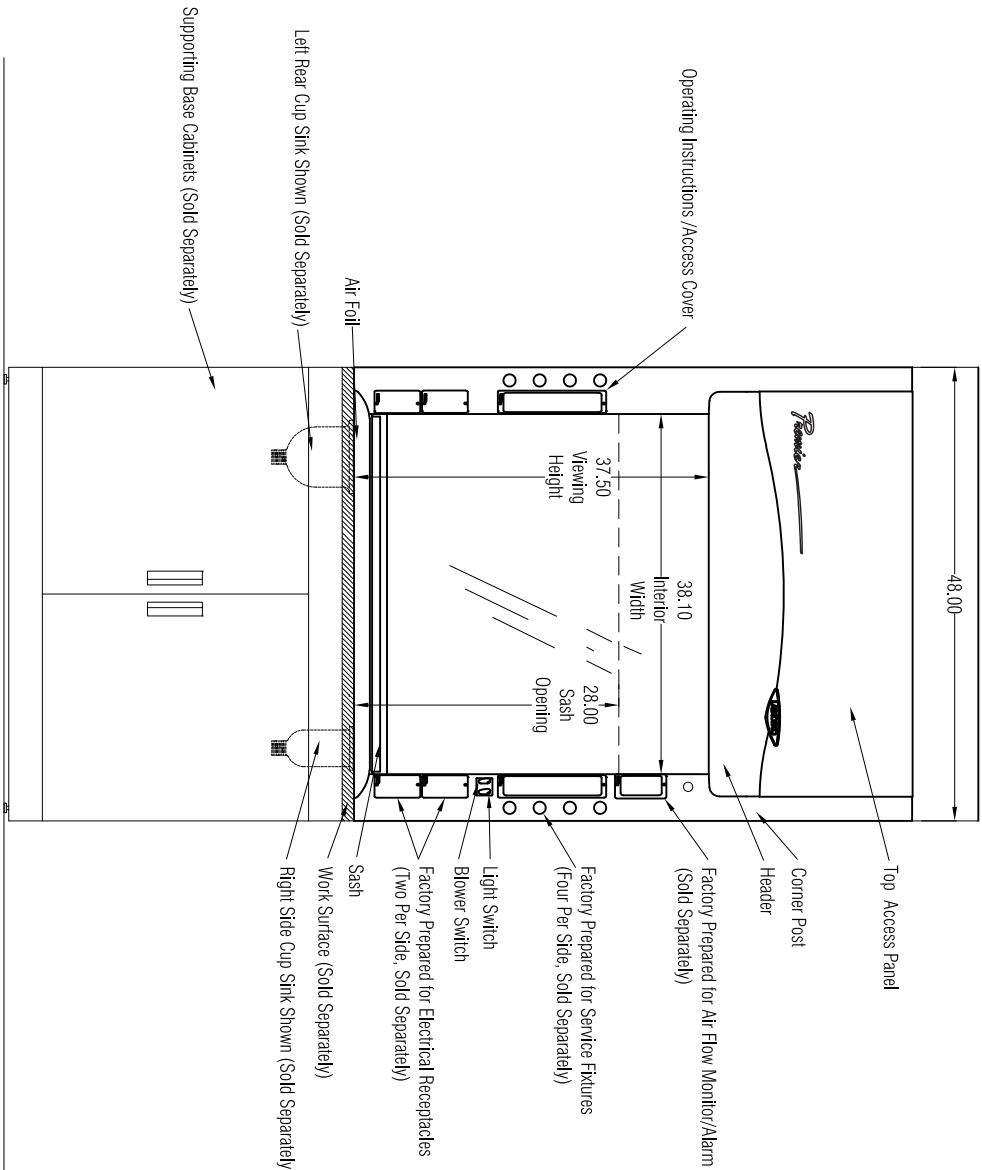
Sheet No. _____



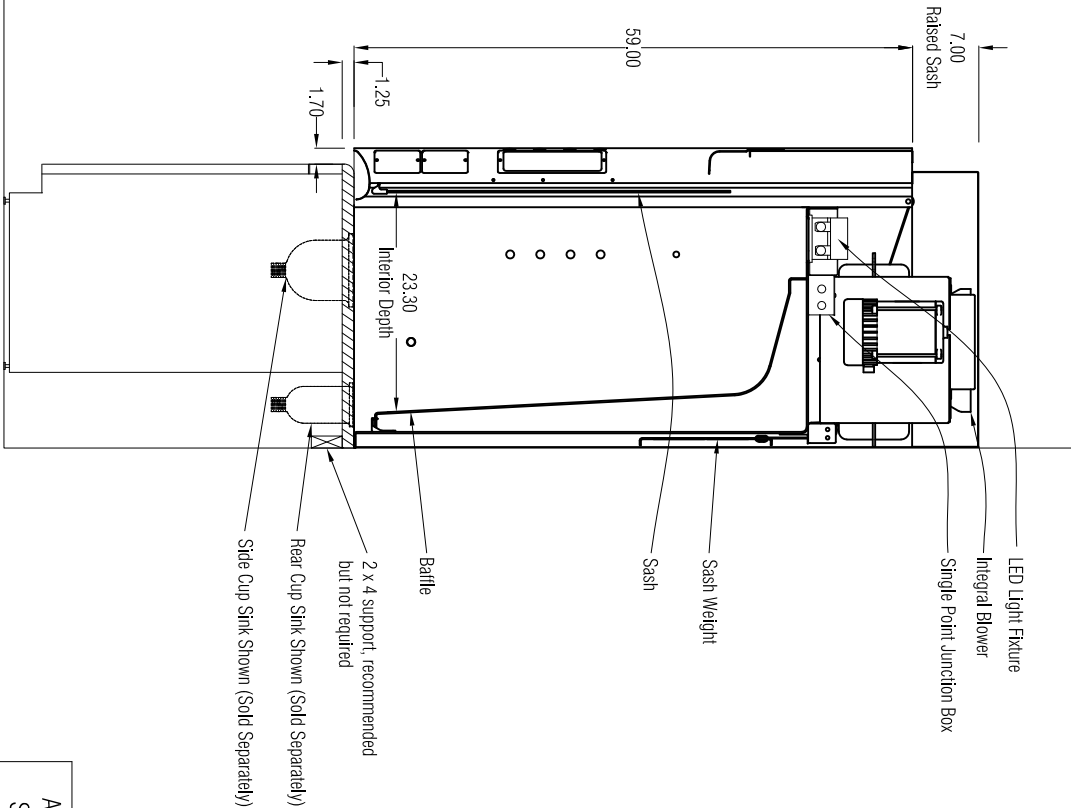
TOP VIEW



WORK SURFACE (Sold Separately) 95004-XX (See General Description) for XX value)
Model number varies based on sink location selection



FRONT VIEW



SIDE VIEW

Airflow Volumetric Rate (CFM) @ Static Pressure (inches of water)		Nominal Ductwork Diameter	Equivalent Resistancet	HP
Face Velocity (fpm)	100% open (28")			
100	725 @ 0.17"	10"	75	1/3

4ftn feet of straight duct