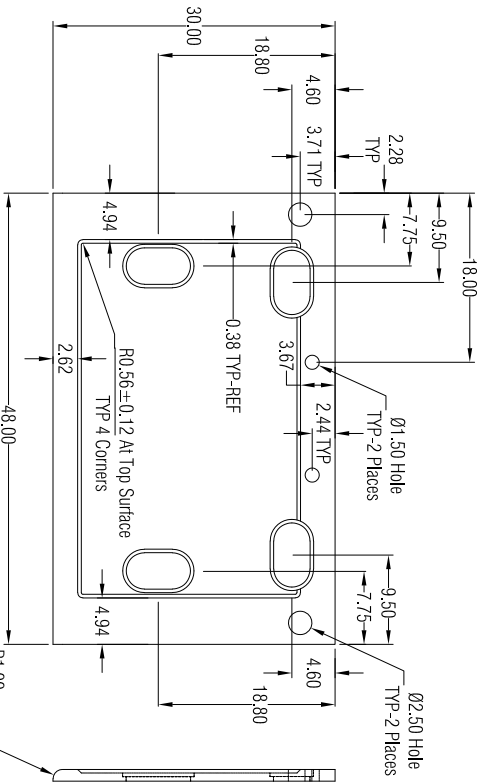
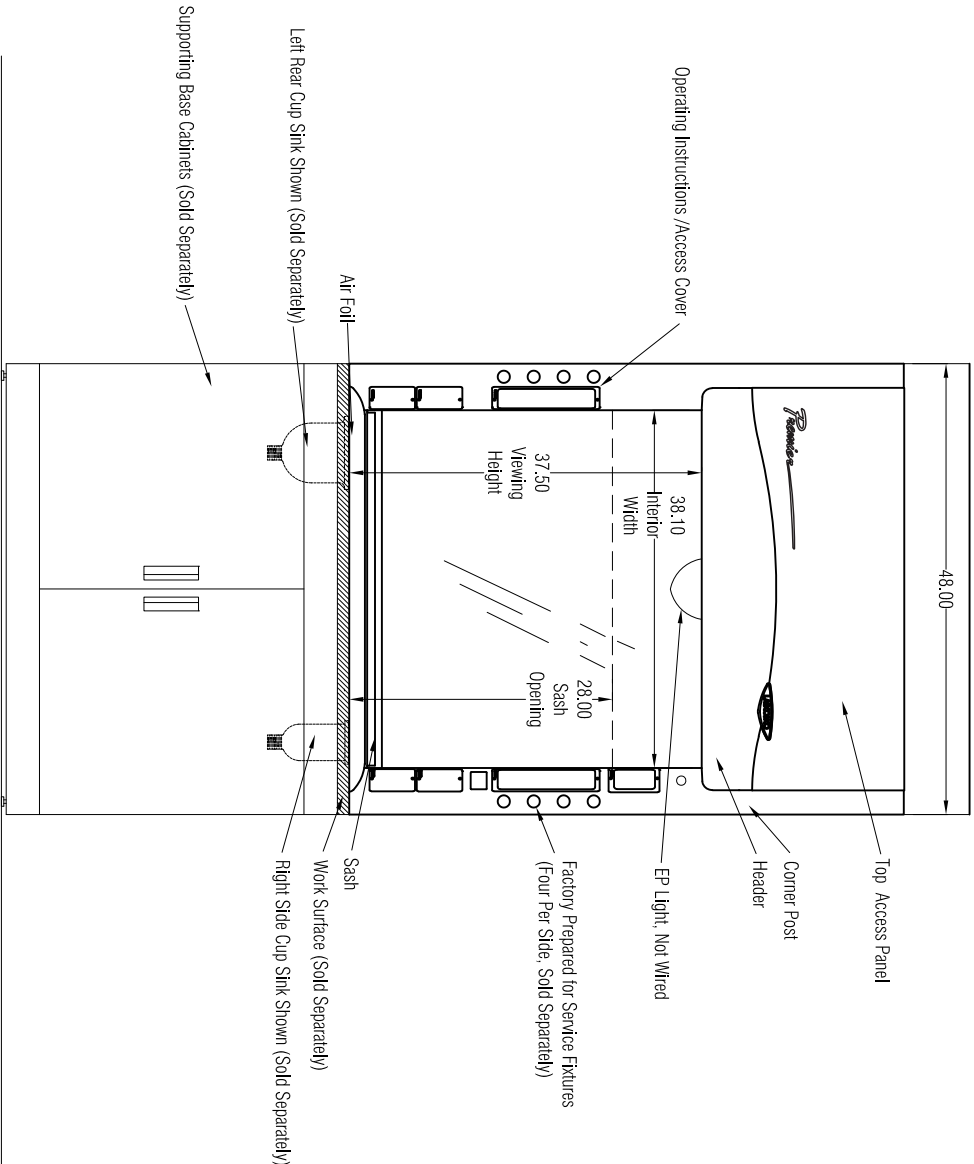


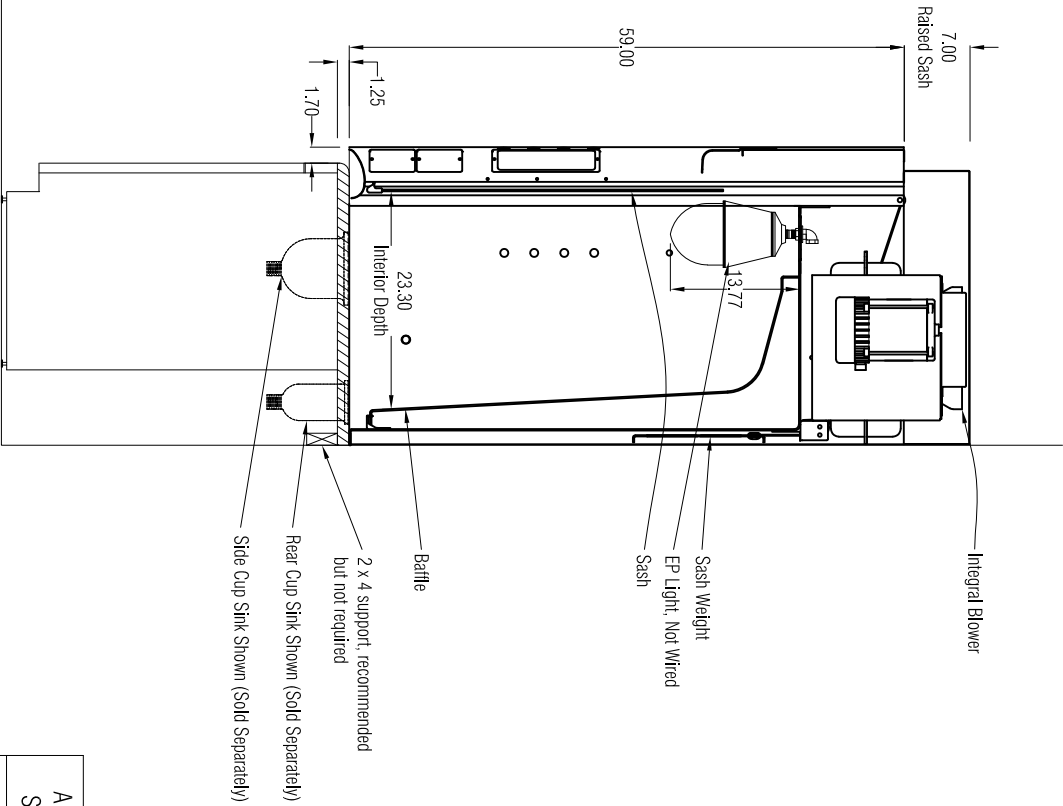
TOP VIEW



WORK SURFACE (Solid Separately) 95004-XX (See General Description) for XX value) Model number varies based on sink location selection



FRONT VIEW



SIDE VIEW

GENERAL DESCRIPTION

- 4' Protector Premier Hood with Integral Blower
- Model: 100400080
- Exterior Superstructure
- * Double Wall Construction
- * Cold Rolled Steel
- Interior Superstructure
- * Galvanized Steel (standard)
- Left / Right Facia:
- * Powder Coated Steel
- * Color: Glacier White
- Liner Material
- * Molded Fiberglass Reinforced Polyester Resin
- Side Panels
- * Both Sides
- * Removable
- * Color: Glacier White
- Baffles
- * Molded Fiberglass Reinforced Polyester Resin
- Interior Access Panels
- * None
- Corner Post with Access Covers
- * Right and Left Sides
- * Cold Rolled Steel
- Air Foil
- * Cold Rolled Steel
- * Powder Coat Finish
- Sash
- * Vertical Travel
- * Tempered Safety Glass
- * Counter Weighted and Balanced
- Pulley System
- Electrical Fixtures
- * Explosion Proof Light Fixture (Bulb not included)
- Alarm / Monitor
- * None Provided
- Wiring
- * No internal wiring/switches are included as hood is EP rated
- * Blower and EP light to be wired in the field to meet local codes
- * 208-230, 50 Hz
- Service Fixtures (Solid Separately)
- * Factory Prepared for Service Fixtures, Four Per Side
- Work Surface (Solid Separately)
- * Black Epoxy Work Surface, Model 95004-XX (See below for XX)
- * # 00 - No cup sink cutouts
- * # 01 - Cup sink cutout right rear location
- * # 02 - Cup sink cutout right side location
- * # 10 - Cup sink cutout left rear location
- * # 20 - Cup sink cutout left side location
- * # 11 - Cup sink cutouts left and right rear locations
- * # 22 - Cup sink cutouts left and right side locations
- Cup Sink (Solid Separately)
- * Black Oval Polypropylene Capsink, 3" x 6", # 4005200
- Required Accessories (Solid Separately)
- * Remote Blower
- * Supporting Base

Assembly and Crating
* Pre-Assembled
* Palletized

SCALE: Scaled to fit

Airflow Volumetric Rate (CFM) @ Static Pressure (inches of water)		Nominal Ductwork Diameter	Equivalent Resistance†	HP
Face Velocity (fpm)	100% open (28")			
100	725 @ 0.17"	10"	75	1/3

†In feet of straight duct



LABCONCO CORPORATION • KANSAS CITY MO USA 64132
800-821-5525 / 816-333-8811 • labconco.com

FUME HOODS for:

Rev _____ Date _____

Date: June 2023

Drawing # 100400080

Drawn By: C. Alumbaugh

Checked By: _____

Approved By: _____

Sheet No. _____