

GENERAL DESCRIPTION

4' Protector Premier Hood with Integral Blower
Model: 100400051

- Exterior Superstructure
- * Double Wall Construction
- * Cold Rolled Steel
- Interior Superstructure
- * Galvanized Steel (standard)
- Left / Right Facia
- * Powder Coated Steel
- * Color: Glacier White
- Liner Material
- * Molded Fiberglass Reinforced Polyester Resin
- Side Panels
- * Both Sides
- * Removable
- * Color: Glacier White
- Baffles
- * Molded Fiberglass Reinforced Polyester Resin
- Interior Access Panels
- * None
- Corner Post with Access Covers
- * Right and Left Sides
- * Cold Rolled Steel
- Air Foil
- * Cold Rolled Steel
- * Powder Coat Finish

- Sash
- * Vertical Travel
- * Tempered Safety Glass
- * Counter Weighted and Balanced
- * Pulley System

Electrical Fixtures

- LED Light and Tubes w/ Switch
- Alarm / Monitor (Sold Separately)
- * Factory Prepared for Air Flow Monitor/Alarm

Wiring

- * Fume Hood Wired at Factory
- * Electrical Connection made inside 4x7" Junction Box
- * 208-230, 50 Hz

Service Fixtures

- Labconco * Color-Coded Hooded Handle
- * Front Loading
- * Ports included to convert standard fixtures to Vacuum or Air

Symbol	Service	Color
CW	Cold Water	Green
Gas	Gas	Blue
Air	Compressed Air	Orange
Vac	Vacuum	Yellow

Plumbing

- * Connections Made with Swagelok Compression Fittings
- * Final connection by others
- * Prepared for 1/2" or 1/4" Copper Tubing
- * Standard Water Piping is 1/4" Copper Tubing
- * Air and Vac Piping is 1/4" Brass Tubing
- * Standard Gas Piping is 1/4" Brass Tubing

Work Surface (Sold Separately)

- * Block Epoxy Work Surface, Model 95004-XX (See below for XX)

- * # 00 - No cup sink cutouts
- * # 01 - Cup sink cutout right rear location
- * # 02 - Cup sink cutout right side location
- * # 10 - Cup sink cutout left rear location
- * # 20 - Cup sink cutouts left and right rear locations
- * # 11 - Cup sink cutouts left and right rear locations
- * # 22 - Cup sink cutouts left and right side locations

Cup Sink (Sold Separately)

- * Black Oval Polypropylene Capsink, 3" x 6", # 4005200
- Required Accessories (Sold Separately)

- Remote Blower
- * Supporting Base

Assembly and Coating

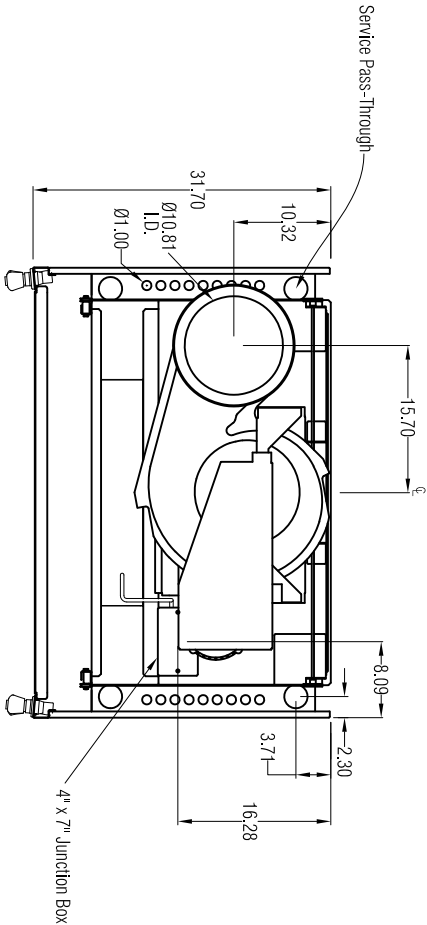
- * Pre-Assembled
- * Polietized

SCALE:

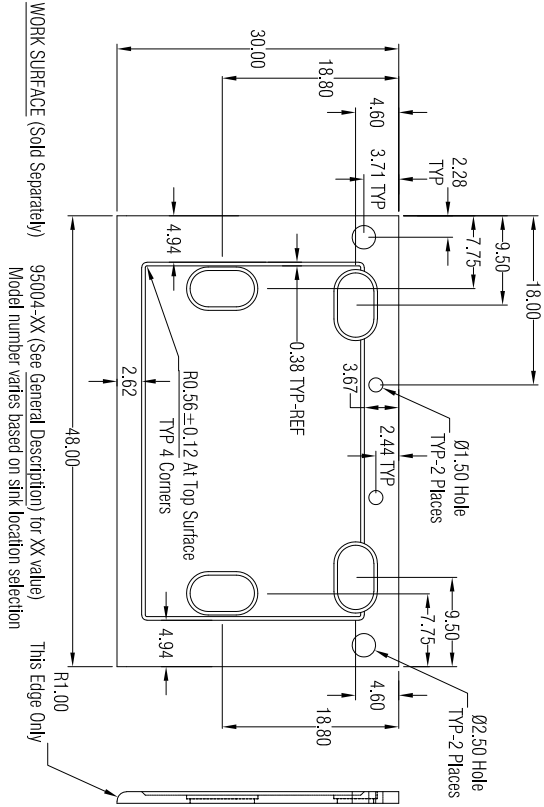
Scaled to fit

Airflow Volumetric Rate (CFM) @ Static Pressure (inches of water)		Nominal Ductwork Diameter	Equivalent Resistance†	HP
Face Velocity (fpm)	100% open (28")			
100	725 @ 0.17"	10"	75	1/3

†In feet of straight duct

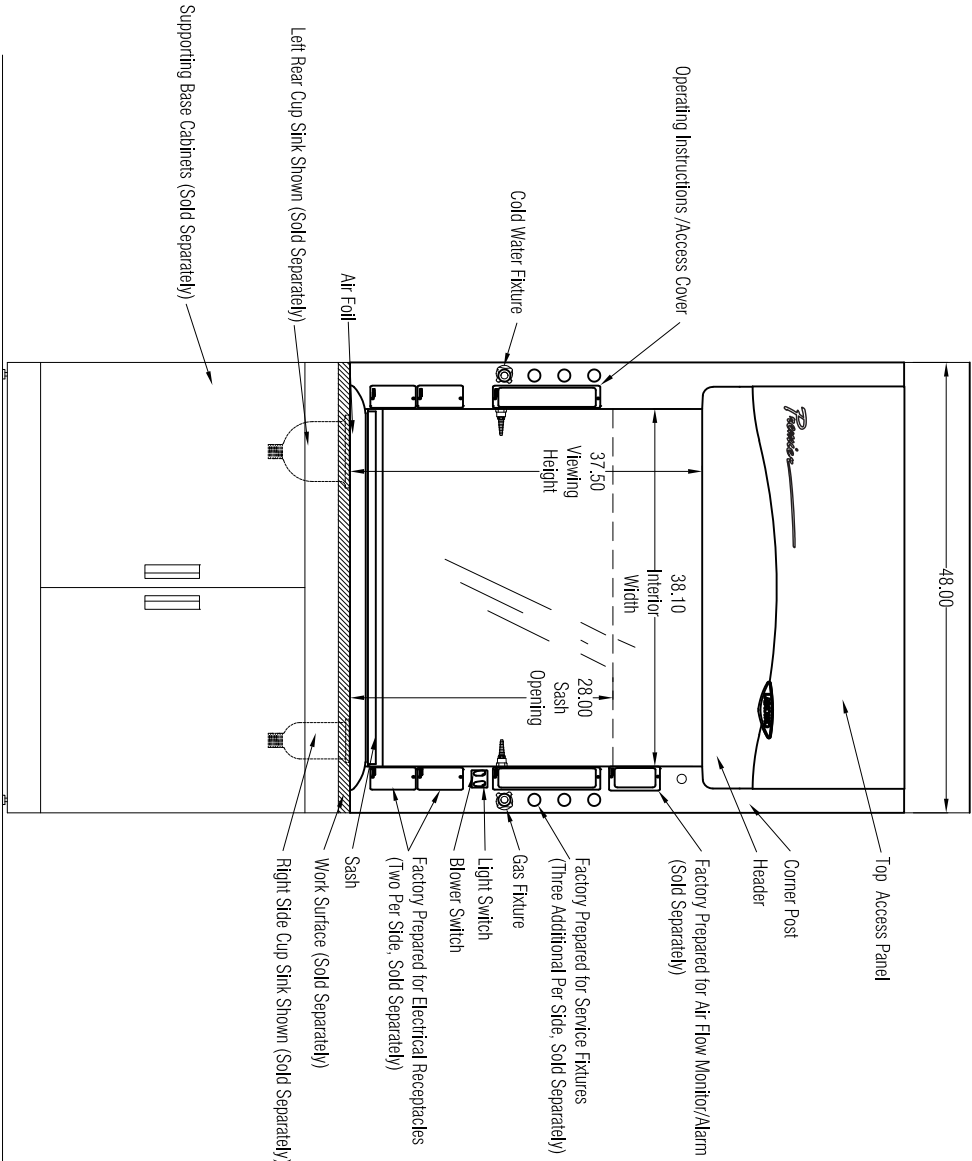


TOP VIEW

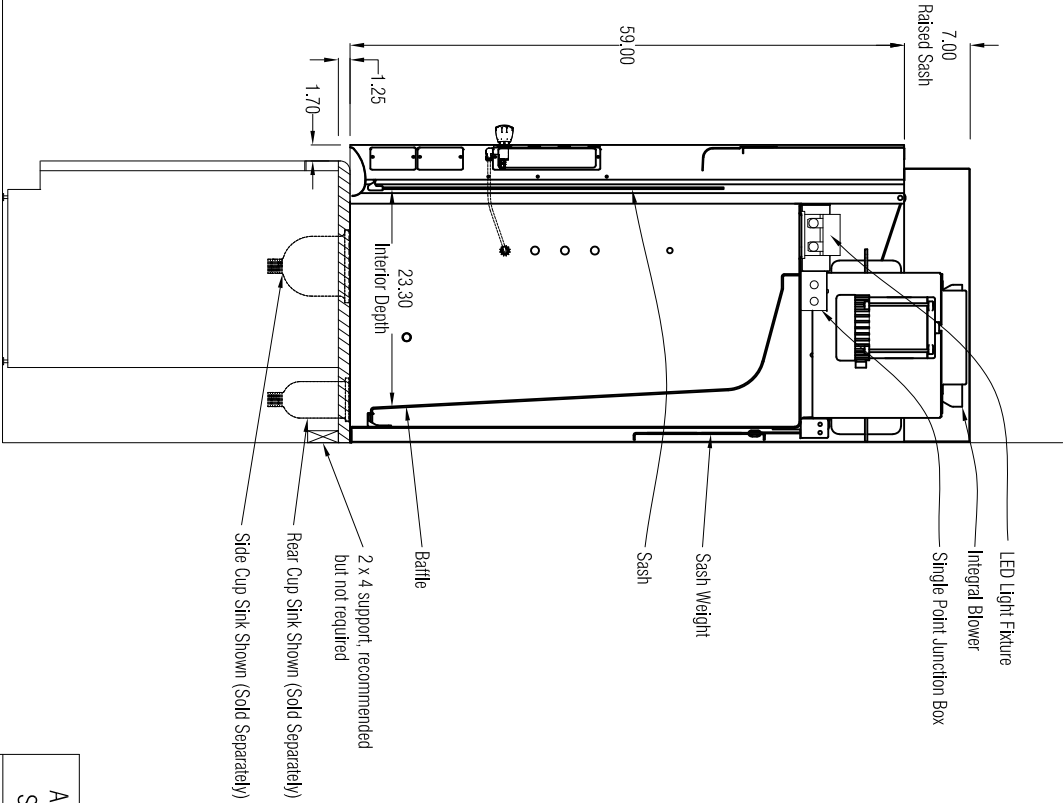


WORK SURFACE (Sold Separately)

95004-XX (See General Description) for XX value)
Model number varies based on sink location selection



FRONT VIEW



SIDE VIEW