

GENERAL DESCRIPTION

4' Protector Premier Hood with Integral Blower
Model: 100400050

- * Double Wall Construction * Cold Rolled Steel
 Exterior Superstructure
 Interior Superstructure
 * Galvanized Steel (Standard)
 Left / Right Facia:
 * Powder Coated Steel * Color: Glacier White
 Liner Material
 * Molded Fiberglass Reinforced Polyester Resin
 Side Panels
 * Both Sides * Removable * Color: Glacier White
 Baffles
 * Molded Fiberglass Reinforced Polyester Resin
 Interior Access Panels
 * None
 Corner Post with Access Covers
 * Right and Left Sides
 * Cold Rolled Steel
 Air Foil
 * Cold Rolled Steel * Powder Coat Finish
 Sash
 * Vertical Travel
 * Tempered Safety Glass
 * Counter Weighted and Balanced
 * Pulley System
 Electrical Fixtures
 * LED Light and Tubes w/ Switch
 Alarm / Monitor (Sold Separately)
 * Factory Prepared for Air Flow Monitor/Alarm
 Wiring
 * Flame Hood Wired at Factory
 * 120VAC Connection made inside 4x7 Junction Box
 * 208-230, 50 Hz
 Service Fixtures (Sold Separately)
 * Factory Prepared for Service Fixtures, Four Per Side
 Work Surface (Sold Separately)
 Black Epoxy Work Surface, Made 95004-XX (See below for XX)
 * # 00 - No cup sink cutouts
 * # 01 - Cup sink, cutout right rear location
 * # 02 - Cup sink, cutout right side location
 * # 10 - Cup sink, cutout left rear location
 * # 20 - Cup sink, cutout left side location
 * # 11 - Cup sink cutouts left and right rear locations
 * # 22 - Cup sink cutouts left and right side locations
 Cup Sink (Sold Separately)
 * Black Vinyl Polypropylene Cupsink, 3" x 6", # 4005200
 Required Accessories (Sold Separately)
 Remote Blower
 Supporting Base



LABCONCO CORPORATION • KANSAS CITY MO USA 64132
800-821-5525 / 816-333-8811 • labconco.com

FUME
HOODS
for:

Rev	D

Date: June 2022

June 2023

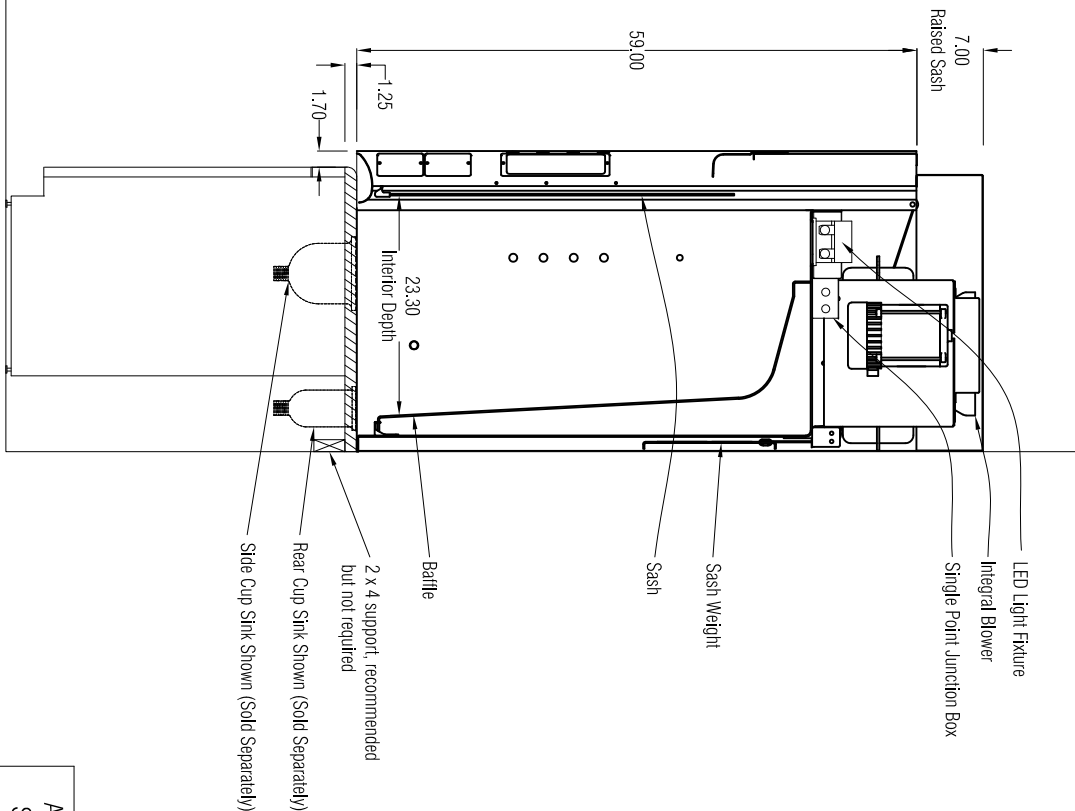
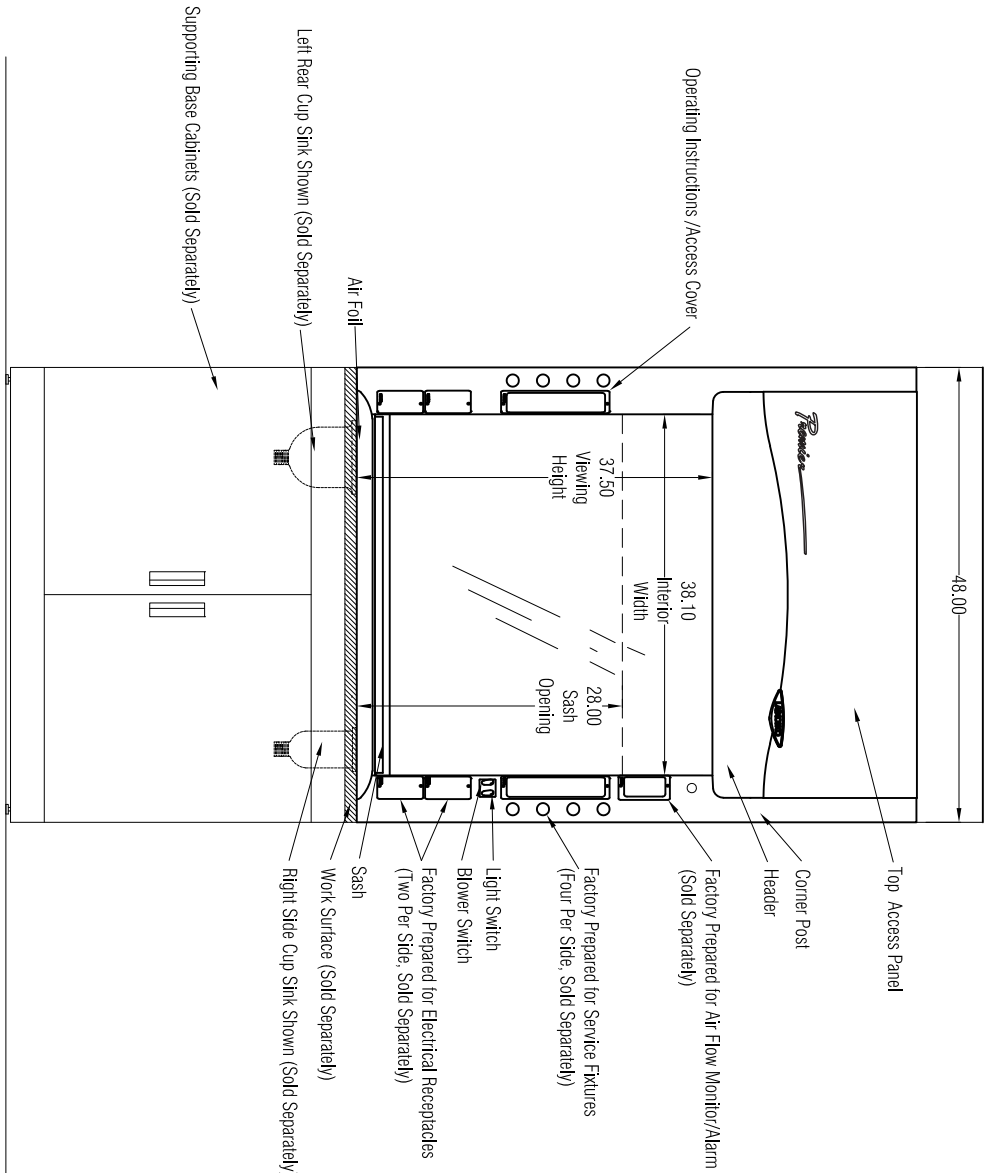
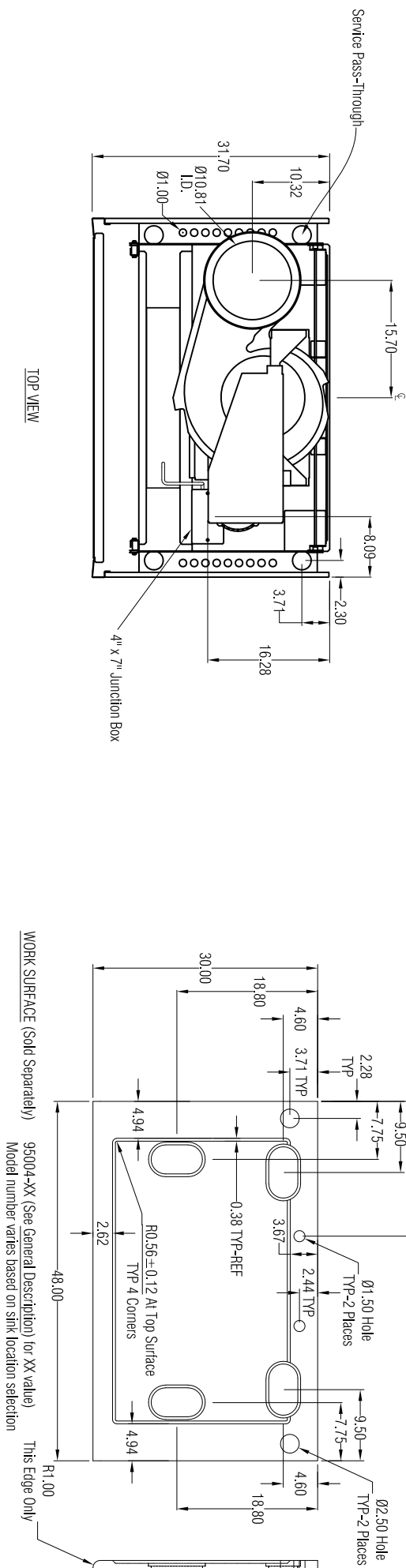
Drawing #
100400050

Drawn By:
C. Alumbaugh

Checked By:

Approved By

Sheet No.



Airflow Volumetric Rate (CFM) @ Static Pressure (inches of water)		Nominal Ductwork Diameter	Equivalent Resistance†	HP
Face Velocity (fpm)	100% open (28")			
100	725 @ 0.17"	10"	75	1/3

11 feet of straight duct