

TRANSPORT for GREATER MANCHESTER

**STATEMENT OF ACCOUNTS
FOR THE YEAR ENDED
31 MARCH 2023**

DRAFT

Table of contents

Directors' Report and Narrative Report to Statement of Accounts.....	2
Statement of Responsibilities for the Statement of Accounts.....	26
Annual Governance Statement.....	27
Independent Auditor's Report to Transport for Greater Manchester.....	47
Comprehensive Income and Expenditure Statement for the year ended 31 March 2023.....	51
Movement in Reserves Statement for the year ended 31 March 2023	52
Balance Sheet at 31 March 2023	53
Cash Flow Statement for the year ended 31 March 2023	54
Notes to the Accounts	55

Directors' Report and Narrative Report to Statement of Accounts

Organisational overview and operational environment

Greater Manchester Combined Authority

The Greater Manchester Combined Authority (GMCA) is made up of the ten Greater Manchester Local Authorities and the Mayor who work with other local services, businesses, communities and other partners to improve the city region. The GMCA oversees Transport for Greater Manchester (TfGM), who are in turn responsible for management of the network.

Set out below is an overview of the operational environment for TfGM. Certain travel data included relates to volumes prior to the Covid-19 pandemic with comparatives on overall levels to the current position as we continue to recover from the impact of the pandemic. Further information is given later in this Narrative Report on the impact of COVID-19 on TfGM's operational environment and the responses to it.

Mayor of Greater Manchester

On the 8 May 2021, Andy Burnham was re-elected as Mayor of Greater Manchester.

The Mayor is the Chair and eleventh member of the GMCA. The leaders of the ten councils form the Mayor's cabinet. The Mayor is able to make some decisions independently, but others involve consultation with, and approval of, the other 10 members of the GMCA. Some decisions need unanimous support, others need a majority.

Supporting the Mayor is the Transport Commissioner, Vernon Everitt, who was appointed in April 2022 and is playing a leading role in the delivery of the Bee Network. In addition, the Mayor is supported by an Active Travel Commissioner, Dame Sarah Storey. Dame Sarah will advise the Mayor on the delivery of the Bee Network active travel vision. Dame Sarah has now made her recommendations for Refreshing the Active Travel Mission in Greater Manchester.

Greater Manchester Transport Committee

The Greater Manchester Transport Committee (GMTC) is a joint committee made-up of the principal transport decision-making bodies – the ten GM Councils, GMCA and the Mayor of Greater Manchester.

Members of the GMTC represent residents and businesses across Greater Manchester and have oversight across all aspects of Greater Manchester's transport network. GMTC oversees the performance of the transport system and hold rail, tram, bus operators, TfGM, and highways authorities to account for their respective performance. This effectively allows the Committee to act in an advisory capacity to the Mayor and GMCA.

Three sub-committees look in more detail at: capital projects and policy; bus travel; and the Metrolink and rail networks.

After the year end a proposal has been made to GMCA for a new, smaller, and more strategically focussed 'Bee Network Committee' (BNC), which would lead transport decision-making at a regional level, taking greater ownership and responsibility for the GM integrated transport network.

Greater Manchester Transport Strategy 2040

The Greater Manchester Transport Strategy 2040 was published in 2017, and refreshed in 2021, with a new Five Year Transport Delivery Plan also published in 2021 (see the following link: <https://tfgm.com/strategy-supporting-documents>).

The Strategy is updated through a series of five-year Delivery Plans, which set out Greater Manchester’s medium and shorter-term delivery priorities. The current Delivery Plan (covering 2021-2026) states that, to deliver our long-term Strategy, we want 50% of all journeys in Greater Manchester to be made by walking, cycling and public transport by 2040. That’s one million more sustainable journeys every day.

The Greater Manchester Transport Strategy 2040, five-year Delivery Plans and sub-strategies are underpinned by seven key principles that are applied consistently as we plan Greater Manchester’s transport network.



The Greater Manchester Transport Strategy 2040 is aligned with multiple strategies and policy documents including:

- The Greater Manchester Transport Strategy 2040 Five Year Transport Delivery Plan (2021-2026)
- The Greater Manchester Transport Strategy 2040 Progress Report
- Congestion Deal
- Greater Manchester Clean Air Plan
- Made to Move and Change a Region to Change a Nation (our LCWIP).
- HS2 and Northern Powerhouse Rail Growth Strategy Our Prospectus for Rail

The Greater Manchester Transport Strategy 2040, Five Year Transport Delivery Plan and latest Progress Report continue to provide the appropriate framework for the response, development of options and delivery of appropriate plans. A series of more detailed thematic sub-strategies are being published, including on the topics of Electric Vehicle Charging Infrastructure and Streets for All (published 2021), Freight and Logistics, Rapid Transit, Shared Mobility and the Greater Manchester Bus Plan (due to be published later in 2023).

Greater Manchester’s Bee Network

The Mayor of Greater Manchester, Andy Burnham, has committed to creating the ‘Bee Network’ a London-style transport system which includes buses and trams by 2025 and commuter trains by 2030. The Bee Network will be simple and easy to use and will support seamless end to end journeys by walking, wheeling, cycling and public transport with London-level fares, a daily cap and single ticket, no matter how many times or how the journey is made. The network will be accessible to all, owned by, run for and accountable to Greater Manchester, with audio visual announcements on all services, real-time information, level access at stops, stations and interchanges, all under a single identifiable and respected brand. The Bee Network will also connect our people, our neighbourhoods, our towns and cities, making every day journeys easier so that people can travel simply and sustainably wherever they need to go.

It supports Greater Manchester's ambition to make GM one of the best places in the world to *grow up, get on and grow old* - seamlessly connecting our people, places and communities. The Bee Network will also help to contribute to our health, our air quality and our commitment for GM to be net zero by 2038.

TfGM's role will be to lead the delivery of the Bee Network over the coming years, on behalf of the Mayor and the 10 Greater Manchester councils.

Highways

Based on 2022 data, in the city-region, 68% of all journeys were made by road, with an estimated 1.75 billion trips made on the Greater Manchester (GM) road network (with an origin and/or destination inside GM) each year. It is a critical asset on which public transport, freight, business, visitors and commuters rely including, increasingly, for active travel modes.

Greater Manchester's roads are changing. We are using them to deliver better facilities for pedestrians and cyclists, giving priority for public transport and enabling better places to live and breathe. This is essential in achieving the aspirations set out in the 2040 strategy and ensuring the transport network keeps pace with growth in the city region by moving more people more cleanly and efficiently.

TfGM does not manage highways on behalf of Greater Manchester. Greater Manchester's 10 local authorities are responsible for the roads in their area, such as general maintenance and the planning of the work to deliver it. TfGM does, however, have strategic oversight of the Key Route Network ("KRN"), making up over 650km of Greater Manchester's busiest roads. While this is just 7% of the total length of the highways network, it carries two-thirds of all peak-time traffic.

TfGM works closely with local authority partners and Highways England to coordinate day-to-day operations and deal with incidents and events on Greater Manchester's roads and motorways. This includes work aimed at tackling congestion such as managing signals to improve traffic flow, controlling pedestrian crossings, conducting long-term planning and modelling and design, and installing and modifying new traffic signal junctions.

Having both visual oversight and close working relationships with each of the districts enables TfGM to communicate up-to-date travel advice across its various media platforms – ranging from web and social media channels through to roadside message boards. Such travel information helps the travelling public to plan their journeys in advance of major events or upcoming roadworks.

Metrolink

Metrolink is owned by TfGM and operated and maintained by KeolisAmey Metrolink (KAM) on a seven-year contract (with an option to extend up to 2027) which began in July 2017. While KAM operates and maintains the network, TfGM is responsible for setting the price of tickets, renewing, enhancing and expanding the network and planning future development, as well as overseeing the operations and maintenance contract.

Metrolink services began operating in 1992 and since then the network has grown extensively and is now the largest light rail network in the UK. The system began to expand in 2010, with a c£2 billion expansion and extension programme; the latest extension being the Trafford Park Line which opened in March 2020. The network now has a total of 99 stops and 103km of track. Metrolink is one of the most accessible forms of transport with step-free access at all stops and level access from the platform to the tram. The system is powered by electricity produced from wind or solar power, making it zero-emission at street level.

As agreed by Association of Greater Manchester Authorities (AGMA)/GMCA, as part of the funding strategy for the Greater Manchester Transport Fund (GMTF) which funded the majority of the investment in the network referred to above, all net revenues generated from Metrolink are ring fenced to fund the financing costs associated with the local borrowings taken out as part of the GMTF.

Patronage and revenues on Metrolink were, and continue to be, significantly impacted by COVID-19. As at March 2023, patronage has reached circa 87% of pre-pandemic levels. This reduction in farebox revenues, allied with severe inflationary pressures on the cost base, means that the network faces significant funding shortfalls over the coming period. DfT support towards these operating deficits ceased on 4 October 2022, with no further funding commitment beyond this point. Discussions have been ongoing with DfT regarding future funding as part of TfGM's Financial Sustainability Plan. Further details are provided on this below. The impact of this on the Accounts is described further in the Basis of Preparation at Note 2 to the Accounts.

Bus

Greater Manchester's bus network plays a key role in keeping the city-region moving by helping to reduce car journeys and easing congestion on our roads.

Bus services were deregulated in 1986 under the Transport Act 1985. Consequently, there are currently two interacting bus markets in Greater Manchester: a commercial (deregulated) market and a subsidised (contracted) market. Over 80% of services are run commercially by bus companies who set the routes, timetables, fares, frequencies and quality standards. The remaining services form the subsidised market, where bus operators compete to win contracts offered by TfGM. These contracts are for services, or parts of services (e.g. early morning or evening journeys) that are considered to be socially necessary and are funded by TfGM.

School transport makes up part of the subsidised market. Greater Manchester has a comprehensive network of dedicated school services, funded by TfGM. TfGM also owns a fleet of Yellow School Buses.

In addition to some general bus services and school bus services, TfGM funds a Local Link service in Greater Manchester. Local Link provides demand responsive transport which allows passengers living in areas where the service is active, to ring and book a journey within the local area. The vehicles used on this service are minibuses and it is a multi-occupancy service. No age or disability restrictions apply to these services.

Ring and Ride operates across Greater Manchester and provides a door-to-door minibus service for people who find it difficult to use regular public transport. Eligible passengers and an accompanying adult can access free or low-cost journeys of six miles or less in Greater Manchester. The Ring & Ride service is operated by Greater Manchester Accessible Transport Ltd (GMATL) and is mainly funded via a grant from TfGM.

Bus patronage and revenue fell significantly at the start of the pandemic but has recovered to approximately 85% of pre-pandemic levels. Notwithstanding this recovery, bus operators are still facing a challenging trading environment, with lower farebox revenues combining with the impact of high levels of cost inflation (e.g., higher fuel, labour costs etc). This has resulted in some operators making commercial service changes across Greater Manchester, including service withdrawals and reductions in frequency. To ensure the stability of the network, TfGM has replaced most of these withdrawn services, largely at current frequencies, to ensure there has been no material impact on network coverage. These interventions will also protect revenue and enable the network to be optimised through better planning, post franchising. The cost of restoring these services has, to-date, been mitigated by Government bus recovery funding and by maintaining local funding of concession payments to bus operators at pre Covid-19 levels. These same funding sources have also, to date, helped to prevent wider-reaching service withdrawals. That bus recovery funding was due to expire at the end of June 2023, however DfT has recently announced an extension, the impact of which on TfGM is currently being assessed.

Whilst patronage is now recovering, reflecting the region's population growth and our marketing campaigns to offer affordable alternatives to car travel, the lasting impacts of the pandemic and the subsequent exceptional inflationary pressures means that the public transport network will continue to face financial challenges in 2023/24 and beyond.

In April 2022, TfGM was informed that that it had been successful in being awarded an indicative revenue funding allocation of up to £94.8 million to commence delivery of the Greater Manchester Bus Services Improvement Plan (BSIP). This funding is for the period from 2022/23 to 2024/25

As agreed with GMCA TfGM has used part of the BSIP funding to introduce capped bus fares. These were introduced in September 2022 (singles and daily fares) and January 2023 (weekly fares). In the report to GMCA in June 2022 on the

implementation of the singles and daily fares scheme, it was recommended that these proposals were introduced on an initial one-year basis, from September 2022 to August 2023, with a commitment to review the delivery by summer 2023. BSIP funding is also being used to partially support the network stabilisation activities referred to above and to support the operation of smart ticketing on bus services.

Bus Reform

In March 2021, the Mayor of Greater Manchester, Andy Burnham made a decision, to implement bus franchising as part of plans for a joined-up and truly customer-focused transport network.

Once implemented Greater Manchester will be the first city-region outside London to have buses that are under local control, allowing local leaders to set routes, frequencies, fares and tickets. This will allow GMCA and TfGM to fully integrate buses with the rest of the transport network, as part of a customer-focused network with easy end-to-end journeys – the Bee Network.

Bus franchising will deliver customer benefits, including simpler fares and ticketing, better joined-up planning between bus and tram journeys so customers will be able to change between them quickly and easily. It will also mean a ‘one-stop shop’ for ticketing, travel information and customer support, as well as consistent standards for a high-quality customer experience across the network.

Franchising will also support GMCA’s objectives as set out in the Greater Manchester Strategy to become the best place in the country to *grow up, get on and grow old*. With buses under local control, the Bee Network will be able to connect people by public transport to work, home, education, culture and leisure. Bus franchising also means GMCA can set environmental standards for a cleaner, greener bus fleet, helping to meet the city-region’s targets to tackle the climate emergency, reduce harmful emissions and clean up our air.

TfGM will be implementing and managing bus franchising on behalf of GMCA (the franchising authority). To ensure a smooth transition, franchising will be introduced in phases. In December 2022 TfGM awarded the first contracts to bus operators to provide franchised bus services with the first franchised buses starting to run in Bolton and Wigan in September 2023. Tranches 2 and 3 will commence in March 2024 and January 2025 respectively.

Rail

Greater Manchester (GM) places transport at the core of its growth agenda. Excellent transport connectivity is fundamental to our people, businesses, and communities, fulfilling their potential at the heart of a globalised and sustainable Northern Powerhouse economy. Our vision for transport in GM as outlined in the 2040 Transport Strategy, is for world class connections that support long term, sustainable economic growth, and access to opportunity for all.

At the heart of the Strategy is a renewed policy focus on public transport integration. Rail, the missing piece to GM’s integrated transport network (the Bee Network), will need to play its part in achieving this concept and support our ‘Right Mix’ vision and ambitious plans for sustainable growth and economic prosperity.

We have been working extensively with the Great British Railways Transition Team (GBRTT), the Department for Transport (DfT) and wider rail industry partners on developing our rail reform plans.

In March 2023 the GMCA agreed terms with central government via the Department for Housing, Levelling Up and Communities (DHLUC) Trail-Blazer Deal which included more influence on regional rail services. The Trailblazer Deal is a major step forward in improving our railways and ensuring socio-economic prosperity is spread across the city region. It commits to fully integrating rail services into the Bee Network by 2030, through the delivery of:

- Full multi modal fares and ticketing integration across bus, Metrolink, rail and cycle hire (including fares simplification and capping) by 2030;
- Bee Network co-branding across stations, designs, and standards;
- Establishment of a North West Regional Business Unit to help support the management of the current Northern and TransPennine Passenger Service Contracts;

- A commercial vehicle to drive land value capture and regeneration at GM stations;
- Sponsorship of infrastructure and service enhancement schemes that impact GM; and
- A Greater Manchester- Great British Railways Partnership and in the interim a Greater Manchester Rail Board which will be responsible for the delivery of the Trailblazer Deal and Integration of Rail into the Bee Network prior to GBR stand-up.

Work has started to take place to develop the programme of activity for delivering the Trailblazer outputs, and more specifically the development of the Greater Manchester-Great British Railways Partnership (GM-GBR), mobilisation of the Greater Manchester Rail Board (GMRB) and North West Regional Business Unit (that will support TfN and RNP in executing their formal duties of managing the Northern and TPE rail contracts). Work is also being undertaken to deliver PAYG infrastructure across the GM network, develop a commercial vehicle with Network Rail/GBR to unlock land value capture opportunities at stations within GM, and develop a GM Rail 2023-2040 Strategy that will underpin GM's vision for rail (inc. GM Rail Integration) across the city region and will feed into GBR's Long-Term Strategy for Rail (WISP).

Active Travel

Walking, wheeling and cycling form many people's 'first and last mile' of longer journeys by all forms of public transport mode. By facilitating integration of active travel, other sustainable modes of transport can be made more resilient, provide better customer experience, improve operating revenues, and enhance the contribution that seamless door-to-door journeys can make to reducing congestion. Combined, active travel modes form almost a quarter of all trips on the network.

Walking underpins all public transport and private car journeys. Greater Manchester intends to at least double walking and double then double again cycling as modes of travelling, either as part of longer connected trips or as journeys in their own right. This is essential to achieve health, economic, clean air and decarbonisation targets in GM. These modes have the potential in many parts of GM to be the main form of transport, providing a resilient, cost effective and accessible means of travel for all. This is especially true for local trips to school, employment, leisure and nearby shopping. However, the main barriers to more people cycling are reported as being concerns about safety, access to safe routes, security and the fact that many households do not, still, have access to affordable (and in some cases accessible) bicycles. Yet without these modes GM cannot address the climate, obesity, ill health and economic inequalities experienced by many communities.

This will be achieved by ensuring that sufficient road space and modal priority is provided for walking, wheeling and cycling, and, that these changes to the transport network are built to standards that will provide effective alternatives to the car. That demands a clear and consistent vision and leadership to ensure that schemes are designed and delivered consistently across Greater Manchester.

During the year, the Active Travel Commissioner, Dame Sarah Storey, has unveiled a refreshed active travel mission for Greater Manchester focusing on accessibility, behaviour change and clear communications.

Five key priorities have been identified to support these:

1. Infrastructure delivery (with four principles leading to a connected network)
2. Home to school travel
3. Cycle hire and access to cycles
4. Integration with public transport
5. Road danger reduction.

Ten steps have been identified. These include; renewing the commitment for the Bee Network to be universally accessible; deliver a pilot for carriage of bikes and non-standard cycles on trams; adopting vision zero; planning for the expansion of the GM Cycle Hire scheme; establishing integrated ticketing for the Bee Network; exploring new ticketing options (including for Our Pass holders); reviewing the network and pipeline for delivery; developing a new home to school travel plan that reduces the number of children being driven less than 2km; and, addressing training.

To achieve these objectives, TfGM continues to manage, secure and distribute funding from multiple sources of capital and revenue to support the GM active travel ambitions. GM investment in Active Travel to date (March 2023) since 2020, has grown significantly, to over £140m of approved expenditure on the Active Travel elements of the Bee Network. CRSTS investment will begin to increase investment as all highway improvement schemes are obliged to accommodate active travel modes. The first phase of the GM Cycle Hire scheme ‘the Bee Bikes’ has supported to date, over 250,000 journeys, enabling over 600,000km of trips to be made in a safe, affordable and efficient manner, 24 hours a day, seven days a week.

TfGM’s Responsibilities,

TfGM is responsible for carrying out the transport-related functions and policies of the Greater Manchester Combined Authority (GMCA) and the Greater Manchester Transport Committee (GMTC), and those functions of the Mayor which may be delegated to it, including the functions set out below. TfGM is not a statutory highway authority.

TfGM’s responsibilities include:

- Investing in improving transport services and facilities, to support the regional economy.
- Working closely with bus, tram (Metrolink) and train operators to help improve the full journey experience.
- Owning Metrolink – the UK’s largest light rail network – and planning for its future.
- Leading the planning, promotion of and investment in walking and cycling as safe, healthy and sustainable ways to travel.
- Paying for bus services at times and in areas where no commercial bus services are provided.
- Keeping traffic flowing on Greater Manchester’s roads by managing a 650Km ‘Key Route Network’ and maintaining the urban traffic control centre for the whole of Greater Manchester.
- Owning and operating Greater Manchester’s bus stations, stops and shelters and investing in new, modern transport interchanges.
- Subsidising more affordable fares to help older people, children and disabled people get around.
- Developing easier, smarter ways to travel and plan journeys by using data and technology.
- Playing a leading role in coordinating Greater Manchester’s plans to reduce transport-related air pollution.
- Delivering the Mayor’s decision to franchise buses in GM.

TfGM is also acting on behalf of the GMCA to coordinate with the GMCA and the ten Local Authorities to develop a strategy that ensures the legal requirements for clean air are met across the city-region.

TfGM’s Vision, Purpose and Mission statements

The Bee Network will deliver a fully joined-up transport system that’s run for, and owned by, the people of Greater Manchester. Whether it’s by bus, tram, train or bike, it will help everyone get to where they need to be in a simple and safe way.

We want everyone to be able to travel sustainably and affordably, which is why the Bee Network will have a daily cap on prices, offer the best tickets and services, and make sure our customers feel safe and happy, with live travel information and audio-visual announcements all part of seamless end-to-end journeys.

To deliver the Bee Network vision we need to be bold, not only in what we do but in the way we do it. How we organise ourselves and work together will be critical to our success. To help everyone understand and work towards the same shared goal we have developed:

- Our Vision – for Greater Manchester to be a place where everyone can live a good life, growing up, getting on and growing old in a greener, fairer, more prosperous city region.

- Our Purpose - to improve lives by connecting people and places.
- Our Vision and Purpose are supported by two clear mission statements which define what we are here to do. For Transport for Greater Manchester, that's to be the enabling force behind journeys for all. For the Bee Network, it's to deliver seamless, affordable, safe and sustainable journeys for all.
- Our Customer Proposition, as the Bee Network comes to life over the next few years is to be everyone's natural choice for travel in Greater Manchester.
- And ultimately our 'Strapline' – "every journey, every day" is our call to action.

The success of the Bee Network will ultimately be determined by the quality of the customer experience we offer, so we are working hard to make sure that our brand is closely aligned with the 'Voice of the Customer'. This programme of work will put the people and places of Greater Manchester at the heart of how we design, deliver and continuously improve services.

TfGM's values have also been reviewed during the year. These were co-created through a series of workshops where colleagues were able to submit ideas and attend drop-in sessions. Those ideas and suggestions helped to shape a set of values that feel aspirational, inspiring and set out how we will deliver our ambitions.

The updated Values are set out below:

Deliver: We do the right thing and stick to our commitments.

Adapt: When we move forward so does Greater Manchester

Care: We look after each other, our customers, our great city region and our planet

Current macro economic factors

In the last 12 to 18 months, like all organisations, TfGM has been adversely impacted by cost inflation; and other cost and supply pressures which are impacting the supply of services and infrastructure. This includes, but is not limited to, service delivery costs which are largely staff and energy related costs; and supplies for construction projects. TfGM continues to monitor and mitigate these costs as far as possible; and is adjusting, as appropriate, its expenditure and funding budgets for this year to reflect this position. These issues are also being factored into the ongoing work to update TfGM's Financial Sustainability Plan as set out later in this report in the Outlook section.

Impact of the COVID-19 Pandemic

The period covered by this Statement of Accounts and the period since the year end continue to have been significantly impacted in a number of ways by the COVID-19 pandemic and the recovery from it. Where appropriate this Narrative Report refers to the impact of the pandemic on TfGM.

Operating Environment

TfGM's operating environment has a significant impact on the success of delivering the organisation's objectives.

Most of TfGM's 'core' operational activities are funded from the Transport Levy and the Mayoral Precept, as far as the latter relates to transport matters. The Transport Levy is provided by the GMCA from funding received from the ten Greater Manchester Local Authorities. The Transport Levy is set annually by the GMCA which approves the transport budget and the amount provided to TfGM. Certain activities which are Mayoral functions are funded from the Mayoral Budget and the Mayoral Precept. This includes the costs associated with developing, updating and delivering the Local Transport Plan, see the following link: [Our Five Year Transport Delivery Plan | Transport for Greater Manchester \(tfgm.com\)](https://www.tfgm.com/our-five-year-transport-delivery-plan).

In addition to the policies and activities which are directed by the GMCA transport vision, a number of TfGM activities are determined by government policy or legislation, including the English National Concessionary Travel Scheme.

Greater Manchester Clean Air Plan

The government has instructed many local authorities across the UK to take quick action to bring harmful nitrogen dioxide (NO₂) air pollution levels within legal limits.

In Greater Manchester, the ten local authorities, with the support of Greater Manchester Combined Authority (GMCA) and Transport for Greater Manchester (TfGM), are working together to develop a Greater Manchester Clean Air Plan (GM CAP) to tackle NO₂ exceedances at the roadside.

In June 2021 the GMCA endorsed a final GM Clean Air Plan and policy following a review of the information from the GM CAP consultation and wider data, evidence and modelling work. The plan was then agreed by the ten GM local authorities. This included a Greater Manchester-wide category C charging Clean Air Zone (CAZ), where only the most polluting vehicles which don't meet emission standards would have been charged to drive in the Zone.

It was originally intended that the CAZ would go live from 30 May 2022, affecting non-compliant HGVs, buses and non-GM-registered taxi and private hire vehicles. Work to install the CAZ signage and Automatic Number Plate Recognition (ANPR) cameras for monitoring the CAZ began in summer 2021, alongside the development of back office systems.

The CAZ was designed to comply with a legal direction from government issued before the coronavirus pandemic, to deliver compliance with NO₂ legal limits on the local road network by 2024. However, since then there have been significant vehicle supply chain issues and the cost of living has increased leading to concerns about the availability of compliant vehicles and financial hardship for local people.

Late in 2021, Greater Manchester commissioned an independent review of emerging global supply chain issues and the impact this could have on the cost and availability of vehicles.

Based on this the Greater Manchester Mayor and Leaders determined that the original Clean Air Plan was unworkable, Government agreed in February 2022 to lift the previous legal direction requiring GM to achieve compliance with legal NO₂ limits by 2024.

Government gave Greater Manchester until July 2022 to present a revised plan to achieve compliance with legal levels of NO₂ on the local road network in the shortest time possible and by no later than 2026. This was submitted on 1 July 2022.

In January 2023, government asked GM for additional evidence to support our case for a non-charging Clean Air Plan. GM leaders responded with initial evidence. This showed how investment in zero-emission buses will help GM meet legal limits for nitrogen dioxide on the A58 Bolton Road in Bury with the launch of regulated bus services in Wigan and Bolton.

Government has also asked GM to model how its investment-led approach performs (in terms of delivering compliance with legal nitrogen dioxide levels) against the 'benchmark' of a charging clean air zone to address the nitrogen dioxide exceedances identified in central Manchester and Salford.

GM will submit additional evidence, which requires further detailed modelling, to government by summer 2023.

Governance

Directors of TfGM

The Directors of TfGM who held offices of statutory membership during the year, in accordance with Section 9 (2) of the Transport Act 1968, are set out below.

EJ Boylan	- Chief Executive
RM Morris	- Chief Operating Officer
SG Warrener	- Managing Director and Finance and Corporate Services Director
S Wilson	- Non-Executive Director
J Kaye	- Non-Executive Director

T Matthews - Non-Executive Director
M Blackburn - Non-Executive Director

The Annual Governance Statement provides further details regarding the Directors of TfGM; information on TfGM's governance systems and processes; and how TfGM complies with the CIPFA / SOLACE Framework Delivering Good Governance in Local Government. TfGM is responsible for ensuring that its business is conducted in accordance with the law and proper standards, that public money is safeguarded and properly accounted for, and used economically, efficiently and effectively. Each year the governance systems and processes are reviewed and in 2021/22 it was concluded that TfGM had in place satisfactory systems of internal control which facilitate the effective exercise of the organisation's functions. The Annual Governance Statement sets out any key changes in TfGM's governance procedures in 2022/23. These include the updates which are as a result of the usual cycle of review and improvement.

Business model

Business Plan Overview

Transport plays an important role in creating genuine opportunity: it connects people to jobs, essential services, culture, retail, leisure, and to one another. Supporting the Greater Manchester communities to get around safely, reliably, affordably, and sustainably – on foot, by bike, tram, bus, and train – is at the heart of what the organisation does.






TfGM make places better; the Metrolink network connects communities, and the interchanges it owns are an anchor for many of the Greater Manchester towns and are catalysts for regeneration. TfGM continues to make great strides in helping to make Greater Manchester cleaner and greener through sustainable public transport, and of course through championing active travel.

TfGM achievements and awards against Business Plan in 2022/23

Achievements

Despite the uncertainty caused by the external environment TfGM has continued to deliver significant transport initiatives across the city region. The following list, whilst not exhaustive, provides an indication of the successes that have been achieved in the past year.



April 22	<p>Bike Hire milestone Celebrated GM's cycle hire scheme passing 100,000km collectively ridden since it launched in November 2021.</p>	
May 22	<p>Radcliffe Metrolink Park & Ride expansion Facility reopened following the installation of a new parking deck, enabling more people to access the Metrolink network and use public transport for part of their journey.</p>	
Aug 22	<p>Dogs on Trams Trial allowing pet dogs onto Trams commenced. Following the successful trial this has now become permanent.</p>	
Sept 22	<p>Get On Board Campaign A major integrated campaign to encourage people to use public transport and active travel, starting with the promotion of new simple and low bus fares to support people in Greater Manchester with the increased cost of living and make it easier to get around the city-region.</p>	
Sept 22	<p>New online business portal launched The new portal will support Greater Manchester firms in encouraging their workforce and customers to get on board with public transport and walking, cycling and wheeling to help shape the future of the region's integrated Bee Network.</p>	
Oct 22	<p>Parcel lockers at Metrolink stops Shopping with major retailers has become even more convenient for Metrolink customers and bus users as TfGM and InPost announced a partnership, with 13 lockers installed by October and at least 28 more being rolled out across the GM area.</p>	
Nov 22	<p>Rail station improvements continuing – including opening a first of a kind new accessible toilet at Guide Bridge station, with 82 more to be installed across GM in the next 3 years.</p>	

Dec 22	<p>Bee Network Tranche 1 – Contract Award</p> <p>Contracts were signed for franchised services commencing on 24 September 2023. Go North West will operate two large franchises and Diamond will operate seven smaller franchises across Wigan, Bolton and parts of Salford and Bury.</p>	
Dec 22	<p>Operation Avro</p> <p>The TravelSafe Partnership launched a special operation across the region in the run up to Christmas as part of ongoing efforts to ensure the safety of the travelling public and to continue to target crime and antisocial behaviour on the public transport network.</p>	
Mar 23	<p>Stockport Mixed Use Development – One year onsite.</p> <p>Good progress building the Stockport Mixed Use Development, which will transform the town’s bus station into a modern, attractive and accessible interchange, with a direct link to the Rail Station and associated residential development.</p>	
Mar 23	<p>New Devolution Deal Announced Following continuing engagement with government Greater Manchester will get new responsibilities over transport as part of the city-region’s most significant devolution deal with Government, including more influence on regional rail services, to deliver a London-style integrated public transport system - the Bee Network - by 2030</p>	
March 23	<p>Bee Network branded buses</p> <p>New Bee Network bus branding unveiled as Greater Manchester marked six months until start of franchising. With an order placed for 270 new, state-of-the-art electric buses; and funding confirmed to buy land for super electric bus depot.</p>	

TfGM Awards and Accreditations

TfGM continues to be recognised for what it does, what it delivers and for the high level of professionalism it provides. Some examples of awards or accreditations gained or maintained in 2022/23 are shown below.

Date	Award	Body	
Q4 2022	The North West #102 Best Company to Work For 2022 #8 in Best Not-For-Profit Body to Work For in the UK Organisations	Best Companies	
Nov22	Customer Engagement Team led on the re-accreditation of Investors in People.	Investors in People	
Jan-23	Maintained management systems of occupational health and safety (OH&S) of ISO45001:2018	NQA International Voluntary Standard	
Jan-23	Maintained environmental standard ISO14001:2015	NQA International Voluntary Standard	
Ongoing	Customer Service Excellence accreditation	CSE	
Oct 22	A joint TfGM/Stockport Council "Bramhall Park to A6 cycle and walkway scheme" in Stockport received the 'Active Travel Scheme of the Year' award	National Highways Awards	

Nov- 22	<p>TfGM become White Ribbon accredited organisation.</p> <p>TfGM is committed to ending gender-based violence and supporting Greater Manchester’s gender-based violence strategy.</p>	White Ribbon charity	
Dec -22	<p>Road Safety in the Community Award – Highly commended in the Public Sector Driver Safety Award</p>	UK Fleet Champions Awards	

Developing & implementing the 2023 Business Plan

TfGM has developed a 2023 Business Plan sets out what we need to deliver, over the next 2 years and how we are going to organise ourselves to achieve that.

This Business Plan sets the framework that we will use to manage network, organisational and financial performance and to make sure we keep improving. It will be used to support strategic decision-making meaning we can better manage the organisation and deliver on our priorities to budget.

Our key priorities in the next two years are:

- Deliver Phase 1 of the Bee Network by January 2025;
- Develop proposals for Phase 2 of the Bee Network with a focus on how rail services will integrate from 2030;
- Deliver a transport system that operates safely, sustainably, effectively and even more efficiently ;
- Prioritise our Infrastructure Pipeline and make sure it is delivered effectively and efficiently
- Run the organisation and our Bee Network services effectively and efficiently, continuously improving
- Deliver short-term and long-term financial sustainability
- Develop future policy and plans that keep a strategic focus on the 2040 Strategy

The plan was launched in May 2023 and implementation will be closely monitored through the year through the Governance structure described in this report.

Risks, Issues and Opportunities

Cost inflation and the resulting cost of living crisis, continuing supply pressures, together with uncertainty over future central government subsidy for bus and Metrolink operations are significantly impacting on TfGM's operating and financial model.

Work has continued to consider a range of potential future scenarios that may emerge in the external operating landscape. These scenarios include a range of possible outcomes, reflecting different rates of economic recovery and the speed of change in social and environmental attitudes. The work is allowing TfGM to consider potential impacts on the demand for services and reflect on existing organisational priorities.

TfGM has continued to work on re-assessing its medium to long term financial plans as a result of the current inflationary cost pressures and the uncertainty of revenue recovery due to Covid-19. This work is set out in the Financial Sustainability Plan which is described in more detail in the Financial Outlook section.

This holistic approach will ensure that we continue to mitigate downside risk and seek to exploit any opportunities that arise. The prioritisation of existing and planned, activities will help to ensure we are best placed to respond to those future scenarios. This will include changes in the focus and timing of some plans, including the acceleration of some projects and activities to support the Transport Network as part of the broader Financial Sustainability Plan.

We will be able to build on the legacy of new ways of working and behavioural changes both within the organisation and the public to achieve long term sustainable improvements. These will continue to support existing priorities to increase flexible working with GM business, promote modal shift to walking and cycling and improve air quality in GM.

Risk strategy

The strategy provides all staff and their partners with a clearly defined and documented framework to ensure risks are identified and managed in an appropriate manner.

TfGM's risk policy statement is:

"Risk management shall be an integral part of day-to-day management at all levels of the organisation with a robust risk management process which will assist in safeguarding TfGM's reputation and delivering the Strategic Objectives and Outcomes."

The strategy sets out best practice drawing principally on guidance and standards in the "Risk Management – ISO: 31000:2018", "The Orange Book, Management of Risk" and "Management of Risk: Guidance for Practitioners" issued by HM Treasury.

The strategy is prepared in accordance with the Constitution of TfGM and is approved by the Executive Board. The approach provides assurance that appropriate controls are in place to deliver a securely run organisation in line with recommendations of the updated version of the UK Corporate Governance Code. It is part of the delivery mechanism for TfGM Strategic Objectives and Business Plan. The strategy includes the management of strategic, functional, operational, project and programme risks.

All TfGM staff and contractors must comply with the requirements around risk management.

The Audit and Risk Assurance Committee (ARAC) independently monitor and assessing the adequacy and effectiveness of the risk management framework, providing assurance to the Board.

Further details are included in the Annual Governance Statement.

Performance

Financial Performance

Accounts

TfGM is required to prepare an annual Statement of Accounts in accordance with the Accounts and Audit Regulations 2015. These Regulations require Accounts to be prepared in accordance with proper accounting practices. These practices primarily comprise the Code of Practice on Local Authority Accounting in the United Kingdom 2022/23, supported by International Financial Reporting Standards (IFRS).

Primary Statements

The Statement of Accounts includes the following primary statements. A note on the purpose of each of these statements is also shown below:

Comprehensive Income and Expenditure Statement (CIES): This shows the accounting receivable income and the costs incurred in the year of providing services. TfGM's Comprehensive Income and Expenditure Statement for the year shows a net income of £139.9 million (2022: net income of £29.4 million). The net expenditure / income includes capital grants recognised in the year of £91.7 million (2022: £65.2 million), which, under the requirements of the Code, are required to be recognised as income in the year they are received, unless there are conditions attached which TfGM has not met.

A reconciliation from the revenue deficit shown in the CIES, in accordance with the Code, to the surplus is shown below. This information is disclosed in the movement in reserves statement and is included here as an aid in interpreting the information within these financial statements.

2021/22		2022/23	
£000	£000	£000	£000
	29,360	Total comprehensive income and expenditure	139,749
		Add back: IAS19 Pension adjustments	
(48,488)		Remeasurement of the net defined benefit liability	(148,950)
		Current service cost and losses on curtailments and settlements	23,100
22,395		Past service cost	204
244		Employer contributions	(9,027)
(7,646)		Finance costs of pension scheme	3,016
2,894			
	<u>(30,601)</u>		<u>(131,657)</u>
	(1,241)		8,092
(3,680)		Less: Revaluation Surplus	-
82		Less: Revaluation reserve adjustment	264
(65,243)		Less: Capital grants and contributions	<u>(91,748)</u>
	(68,841)	Add: Amounts released from the Deferred Capital	(91,484)
81,525		Amount to match depreciation of grant funded	83,160
1,288		Amount released on disposal of grant funded	<u>1,549</u>
	<u>82,813</u>		<u>84,709</u>
	12,731		1,317
	(1,400)	Less: Amount transferred to Deregulation Reserve	<u>(2,598)</u>
	<u>11,331</u>	Revenue (deficit) /surplus for the year	<u>(1,281)</u>

TfGM's net expenditure, after taking into account all sources of income and expenditure, is financed primarily by way of a revenue grant from the GMCA. The GMCA makes a levy on the ten local authorities in Greater Manchester to meet its own expenditure which includes the revenue grant to TfGM. GMCA also receives other grants from central government to fund TfGM's activities. Capital grants are also receivable from the GMCA in respect of approved expenditure on capital schemes.

The grants receivable from GMCA were as follows:

	<u>2023</u>	<u>2022</u>
	<u>£000</u>	<u>£000</u>
Revenue grants	186,667	202,359
Capital grants	91,327	61,909
Total grants receivable	<u>277,994</u>	<u>264,268</u>

Movement in Reserves Statement (MIRS): This shows the year on year movement on different reserves held by TfGM. These are analysed further in note 19 into 'Usable', being those reserves that TfGM may use to provide services, subject to the need to maintain a prudent level of reserves and any statutory limitations on their use, and 'Unusable'; where reserves are those that TfGM is not able to use to provide services.

As of 31 March 2023, TfGM Usable reserves were £48.1 million (2022: £49.7 million) and the Unusable reserves were £1,984.0 million (2022: £1,842.7 million).

The main Unusable Reserve is the Deferred Capital Receipts Account, which holds the capital grants received by TfGM to fund its capital programme. The Code requires TfGM to recognise capital grants when received in the CIES if these do not have conditions which may give rise to repayment. The majority of grants fall within this category and are held initially within the deferred capital receipts reserve. The reserve is used to fund the future costs of depreciation on the assets delivered by the programme. Each year the depreciation charged for assets that have been funded by the grants held in this reserve are transferred from the deferred capital receipts reserve to the general reserve to allow matching of capital costs and grants. This ensures the capital grants received are ring fenced to cover the future capital depreciation cost.

The Pension Reserve absorbs the timing differences arising from the different arrangements for accounting for post-employment benefits and for funding benefits in accordance with statutory provisions. TfGM accounts for post-employment benefits in the CIES as the benefits are earned by employees accruing years of service, updating the liabilities recognised to reflect inflation, changing assumptions and investment returns on any resources set aside to meet the costs. However, statutory arrangements require benefits earned to be financed as the authority makes employer's contributions to pension funds or eventually pays any pensions for which it is directly responsible.

The Deregulation Reserve represents the costs relating to the transfer of Greater Manchester Passenger Transport Executive's (GMPTE) bus operations to Greater Manchester Buses Limited following the implementation of the Transport Act 1985. As required by the Act, and in accordance with the transfer scheme, which was approved by the Secretary of State for Transport, GMPTE transferred its bus operation activities and certain of its assets and liabilities to this new company. The Deregulation Reserve represents payments and losses incurred by TfGM (then GMPTE) with respect to deregulation on 25 October 1986, which were not charged to profit and loss.

The Revaluation Reserve contains the gains made by TfGM arising from increases in the value of its Property, Plant and Equipment. The balance is reduced when assets with accumulated gains are:

- revalued downwards or impaired and the gains are lost;
- used in the provision of services and the gains are consumed through depreciation, or;
- disposed of and the gains are realised.

The Corporate Capital Reserve primarily relates to the reserves of the entities from which TfGM (then GMPTE) was formed.

Balance Sheet: This shows the value as at the balance sheet date of the assets and liabilities recognised by TfGM. The net assets are matched by reserves held, which are analysed into Usable and Unusable Reserves as described above. The net assets at 31 March 2023 were £2,032.1 million (31 March 2022: £1,892.4 million).

The key movements in the Balance Sheet are summarised below:

The value of assets held in Property, Plant and Equipment in the year has reduced slightly due to large capital schemes completing in previous years and the annual depreciation charge increasing due to the disposal of certain assets due to them being replaced. Despite this, significant capital has still been incurred in the year, including on the following schemes:

- Stockport Interchange park and residential scheme - £48.6 million has been spent on this project which will deliver a modern, multi-modal transport interchange in conjunction with significant supporting residential and associated development including a public park above the interchange and a link to the rail station.
- Clean Air Programme - £19.8 million has been spent on this including in relation to grants for bus engines to be fitted with a technology that reduces NO2 emissions; and Electric Vehicle Infrastructure that allows for Rapid Chargers to be installed in GM.
- Zero Emission Buses - £16.4 million has been spent as part of TfGM's programme for the acquisition of an initial tranche of zero emission buses ahead of the commencement of bus franchising;
- Metrolink Renewals Programme – £14.7 million of expenditure has been incurred on other Metrolink projects in the year across a number of renewals projects; and
- Metrolink Trams and supporting infrastructure - £12.1 million has been spent in the year in procuring the 27 additional trams, along with Tram depot expansion to accommodate the additional trams and expanded park and ride facilities.

The Accounts reflect the outcome of the annual actuarial valuation for accounting purposes based on IAS19 of TfGM's pension fund assets and liabilities. A full actuarial valuation on a 'funding' basis was undertaken at 31 March 2022. A 'desktop' valuation was performed as at 31 March 2023 to roll forward the balances from the full valuation adjusting for changes in financial assumptions. The net position on the fund changed from a deficit position of £106.7 million to a surplus of £25.0 million (a movement of £131.7 million), 2022: liability decreased by £30.6 million). The movement is due to the change in financial assumptions used to value the assets and liabilities, in particular an increase in the discount rate which has significantly reduced the liabilities.

Cash Flow Statement: This shows the change in cash and cash equivalents of TfGM during the year. The statement shows how TfGM has generated and used cash and cash equivalents; and classifies cashflows into operating, investing and financing activities. The net increase in cash and cash equivalents during the year was £23.1 million (2022: net decrease of £44.2 million). The year on year change from cash outflow to cash inflow is largely due to the timing of receipts and payments on the capital programme.

The majority of funding received by TfGM is capital and revenue grants from GMCA which significantly reduces any risk over the recoverability of any future cash inflows. Capital and revenue budgets are strictly monitored to ensure spend is within the approved budget. There is on-going monitoring of the cashflow position and security over the majority of income received, however due to the impact of the COVID-19 pandemic on its 'third party' or commercial income streams and the impact of inflation on key cost headings, TfGM is reviewing its cashflow position closely in conjunction with GMCA and this has been considered in the Going Concern statement made as part of finalising these Accounts.

Expenditure and funding analysis: This note aims to provide a clear link between the in-year monitoring of the revenue budget and the final outturn position in the audited financial statements. The Expenditure and funding analysis shows the net expenditure charged to revenue reserves as reported to management and reconciles this expenditure to the comprehensive income and expenditure statement.

The net expenditure in the year is summarised below:

	2022/23	2021/22	(Increase)/ Decrease
	£'000	£'000	£'000
Concessionary fare scheme	61,302	57,698	(3,604)
Supported bus services	37,180	28,252	(8,928)
Metrolink	11,316	634	(10,682)
Accessible transport	3,686	3,521	(165)
Highways activities	(906)	(791)	115
Road safety activities	(1,610)	(1,365)	245
Operational and other costs	73,097	60,646	(12,451)
	184,065	148,595	(35,470)

The key movements in the year have been reviewed below:

TfGM operate schemes of reimbursement for the carriage of concessionary passengers. The English National Concessionary Travel Scheme (ENCTS) is mandated by government and provides for free off-peak bus travel for elderly and disabled passengers. In addition, TfGM also fulfils the GMCA provision of extensions to the concessions available in certain areas, for example travel by children and the elderly at a discount. The aim of these schemes is to ensure that the operators carrying concessionary passengers are no better or no worse off from the existence of the schemes. The increase in concessionary reimbursement expenditure in 2022/23 is primarily due to the recovery of volumes travelling on the Our Pass scheme, which provides free travel for 16-18 year olds throughout Greater Manchester on bus and which has seen volumes at levels which have been higher than pre pandemic levels from autumn 2021 onwards.

TfGM provides supported bus services, to ensure that areas and services which operators deem commercially unviable receive adequate public transport provision. Costs of Supported Bus Services have increased as noted above and TfGM has intervened in the market where commercial services have been de-registered.

Metrolink net expenditure relates to the net operational cost of running the Metrolink service. The net expenditure reported in the EFA note is after removing internal recharges. There has been a increase in net expenditure in the year of ££10.7 million (2022: net decrease of £1.4 million) due to a reduction in Covid recovery revenue grant support from DfT in the year.

TfGM funds Ring and Ride, a door-to-door accessible transport service for people who find it difficult to use ordinary public transport. TfGM also provides travel vouchers for those not able to use ordinary buses, trains or Metrolink and who have serious walking difficulties or are registered blind. The vouchers can be used to pay for taxis, private hire vehicles and for travel on accessible bus services such as Ring and Ride and community transport. The net expenditure is consistent with prior year.

Highways activities include the management of traffic signals including the design, installation and on-going maintenance of signals and the monitoring of the Key Route Network. There has been a small increase in net income in the year of £0.2 million.

The road safety activity net income relates to the Greater Manchester Casualty Reduction Partnership. Income is received for delivering speed awareness and other driver training courses with any surplus income, after the costs of providing the courses, being invested into improving road safety in Greater Manchester. There has been an increase in net income in the year due to continuing post Covid recovery in course volumes but also due to lower than budgeted costs due to the courses taking place on-line rather than in classrooms as a result of COVID-19. This additional income will be ringfenced for road safety investments in future periods.

Operational costs include costs of bus stations operations, Travelshops, safety and security, bus shelters, passenger information, consultation, depreciation and amortisation, support costs and spend on revenue projects, including scheme

development. There has been a increase in expenditure (net of other income) in the year of £12.5 million primarily due to a higher spend on revenue projects and programmes. The costs of work on a number of projects are funded from revenue streams outside of Levy and Precept funding and the income is included in the taxation and non-specific grant income line in the CIES. This includes work on developing the next tranche of infrastructure investment schemes and continuing work on Bus Franchising.

Outlook

Budget and Reforecasts for 2023/2024

On 10 February 2023 GMCA approved the revenue and capital budgets for TfGM for 2023/24. As in previous years, TfGM will be undertaking regular ongoing updates to reforecast its financial position for the financial year 2023/24 and reports will be submitted to GMCA in July, October and February which will include these reforecasts.

Financial Sustainability Plan

The Bee Network is being delivered against an exceptional set of financial challenges, with patronage and revenue remaining below pre-pandemic levels combined with exceptional inflationary pressures on the cost base of the transport network (e.g. increasing electricity, fuel and labour costs). These challenges have impacted both the Metrolink and Bus networks.

The Budget report to GMCA in February 2023 set out how TfGM are addressing these challenges through the development of a Financial Sustainability Plan. As well as setting out challenging targets in the generation of income; and the control of costs; the Plan includes additional local funding being made available in 2023/24 through the Transport Levy. In addition TfGM has made the case to central government for ongoing financial support following the end of Covid emergency funding.

TfGM has put forward a clear rationale for the level of requested financial support setting out the unique circumstances faced by Greater Manchester.

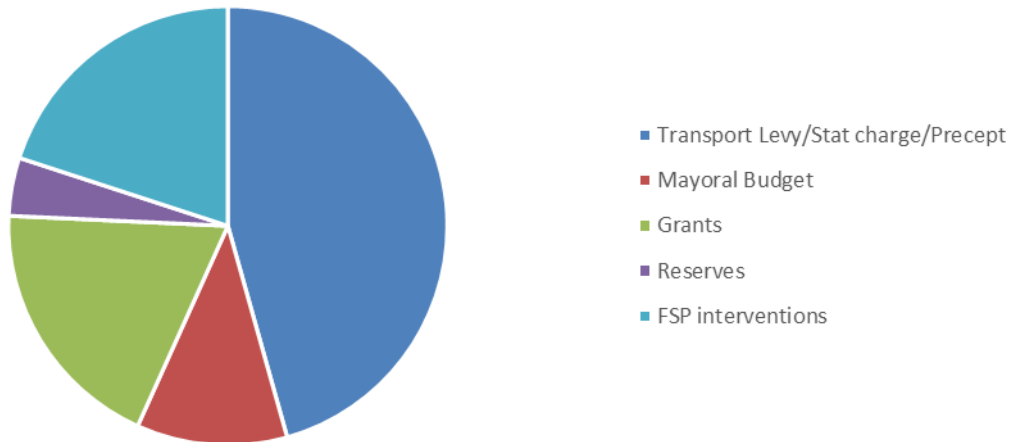
TfGM will continue to consider options, for subsequent consideration by GMCA, for longer-term financial sustainability beyond the next two financial years.

Revenue funding for 2023/24

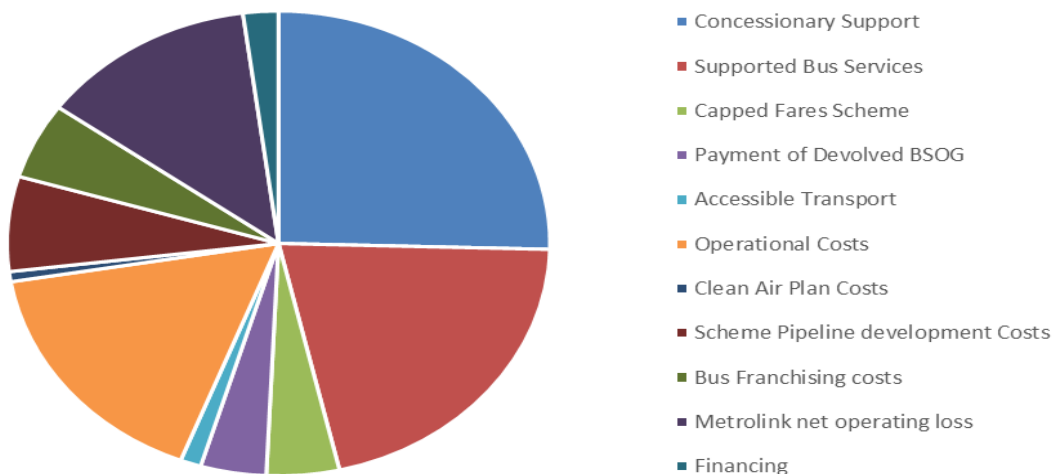
TfGM's Levy budget for 2022/23, which includes the revenue funding for most of its activities, was approved by GMCA on 11 February 2022.

.An overview of the key sources of income and expenditure in the Levy Budget are set out below:

2023/24 Budgeted Revenues



2023/24 Budgeted Costs

**Key points to note from the budget are:****Income**

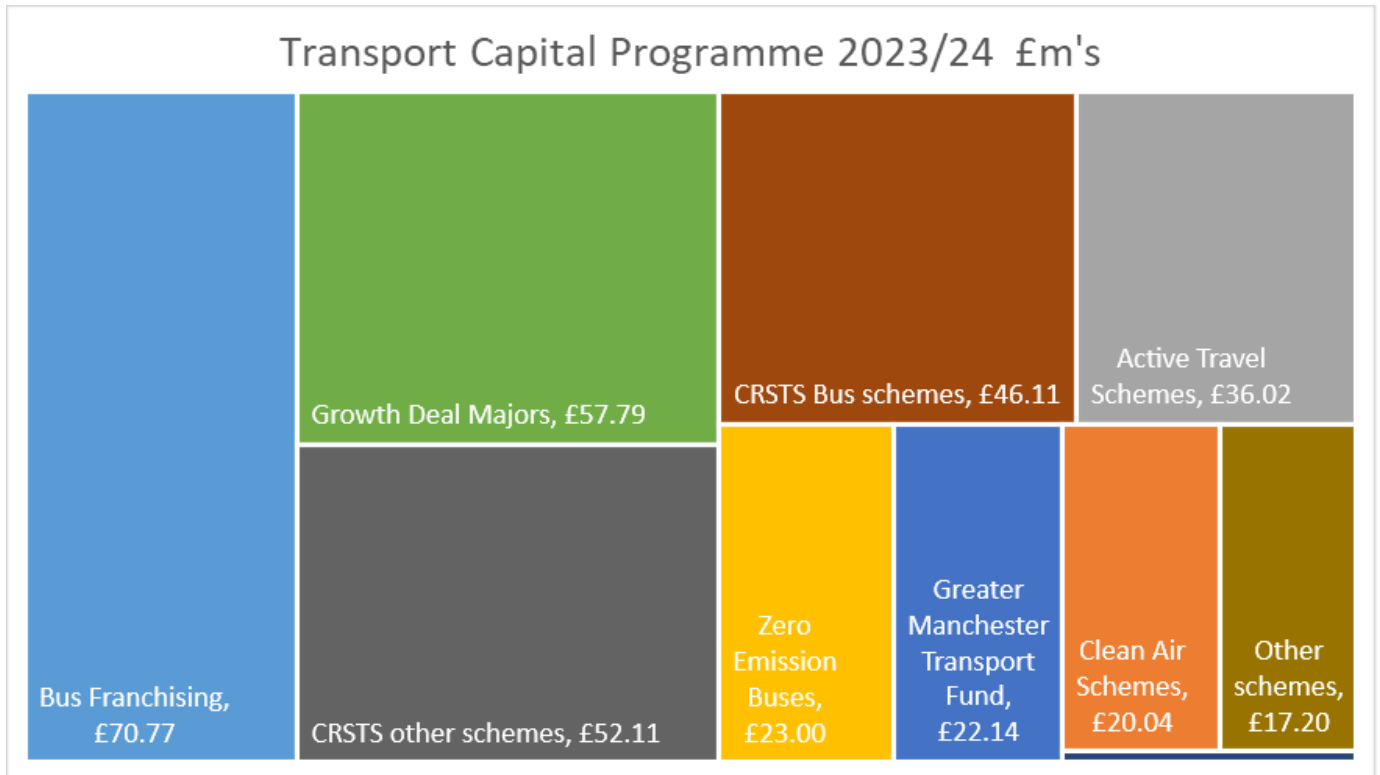
- The transport levy provides the vast majority of TfGM's funding for operational costs. This will increase by £7.7 million (or 4%) in 2023/24;
- The Mayoral General budget relates to Mayoral transport functions and priorities, including the costs associated with updating and delivering the Local Transport Plan (LTP) and the costs of Our Pass (the 16-18 Concessionary Travel Scheme).
- Funding from reserves includes contributions from Capital Programme reserves and Earnback;
- Government grants includes funding for Scheme Development costs and other smaller grants including the Rail Administration Grant; and
- As noted above, TfGM have been in discussions with DfT officials with a view to securing a continuation of financial support for the Metrolink and Bus networks for the next two financial years (2023/24 and 2024/25). The segment relating to FSP in the income chart relates to the amount of continuing financial support requested from DfT (£39 million) together additional local financial mitigations (£21 million), as described in the budget report to GMCA in February 2023, which together form the Financial Sustainability Plan for 2023/24.

Expenditure

- Concessionary travel includes payments to bus operators for carrying concessionary travellers. TfGM has continued to reimburse operators based on pre pandemic volumes, as adjusted by mileage operated as requested by DfT and this is budgeted to continue in 2023/24 until actual volumes recover to pre pandemic levels;
- The supported bus network budget has come under further pressure in 2022/23 as operators have withdrawn services or reduced frequencies. TfGM has replaced the majority of these services from autumn 2022, with funding from a combination of in-year government funding and reserves. The budgeted cost of the additional pressures on the supported services budget in 2023/24 is £27 million which is partly mitigated by government bus support funding of £6 million;
- Capped bus fares were introduced in September 2022 (singles and daily fares) and January 2023 (weekly fares). The budgeted costs are an estimate of the costs to the end of 'year one' of the scheme which runs to 31 August 2023. These costs are funded from BSIP grant;
- The Budget for accessible transport relates largely to the grant to GMATL for the operation of the Ring and Ride service;
- Other operational costs include staff, premises, IS and telecommunications, vehicles costs and the costs of operating and maintaining traffic signals. As for all other cost headings, where there are inflationary and other pressures impacting these costs, these have had to be offset by the delivery of savings, in order that the total budget can be managed within the funding envelope available. As part of the Financial Sustainability Plan inflationary cost increases of c. £8 million are budgeted to be fully mitigated by savings in 2023/24;
- Scheme Development costs include the costs of continuing to develop a pipeline of transport infrastructure to support GM's priorities of sustainable growth as part of the wider Infrastructure development programme;
- Bus Franchising costs includes the costs of continuing to implement the programme of Bus Franchising approved by the Mayor in March 2021;
- TfGM is forecasting an unmitigated, net revenue loss from Metrolink operations for 2023/24 of c£26m, which, in addition to the budgeted financing costs that were previously assumed to be funded from Metrolink net revenues, of £12.8 million, results in an overall net deficit of c£39m. The mitigation strategy to fund this net deficit is part of the Financial Sustainability Plan as set out above; and
- Finance costs include the costs of funding the historic loans which remain on TfGM's balance sheet. All new borrowings to fund additional investments are now taken out by GMCA; and

Capital Budget

The Capital programme approved by GMCA includes £346 million of expenditure on transport related capital projects, including those being delivered by TfGM and the Districts. The main areas of spend are shown below:



A description of the main elements of the Transport Capital Programme are set out below:

- Bus Franchising includes costs to support the delivery of the programme including the costs relating to the delivery of the depots strategy and costs in relation to the purchase of on-bus equipment and other equipment and systems;
- The Growth Deal Majors Programme consists of 15 major schemes (including Stockport Interchange Mixed Use development) which are being delivered by TfGM and the Local Authorities;
- The Zero Emission buses programme is a combination of electric buses and depot electrification works. It is funded from a combination of DfT Zero Emission Bus (ZEBRA) funding and locally funded prudential borrowings;
- CRSTS funded schemes include the delivery of additional electric buses; HS2 development activities; bus franchising ticketing infrastructure and bus pinch point local authority works;
- The schemes within the Greater Manchester Transport Fund category include Metrolink works in relation to both the close out of the Phase 3 expansion and renewals works;
- The Active Travel schemes includes 28 cycling and walking infrastructure schemes, to be delivered by the 10 Greater Manchester Authorities;
- The Clean Air Schemes Programme includes a range of schemes which are funded entirely through grant funding from central government.

Basis of preparation of Statement of Accounts

This Statement of Accounts includes the individual financial statements for TfGM only. Due to the size of its subsidiary entities, it is considered that they are not material in the context of TfGM and therefore group accounts have not been presented.

There are no changes in accounting standards which are considered to have a material impact on the financial statements for TfGM.

The Statement of Accounts is prepared under an accounting regime adopting the International Financial Reporting Standards (IFRS). TfGM implements IFRS by adopting the IFRS-based 'Code of Practice on Local Authority Accounting' ('the Code'), which is the 'version' of IFRS adopted by local authorities.

EJ BOYLAN
Director

SG WARRENER
Director

[]

STATEMENT OF RESPONSIBILITIES FOR THE STATEMENT OF ACCOUNTS

TfGM's Responsibilities

TfGM is required to:

- make arrangements for the proper administration of its financial affairs and to secure that one of its officers has the responsibility for the administration of those affairs. That officer is the Finance and Corporate Services Director;
- manage its affairs to secure economic, efficient and effective use of resources and safeguard its assets; and
- approve the Statement of Accounts.

The Managing Director's Responsibilities

The Finance and Corporate Services Director is responsible for the preparation of TfGM's Statement of Accounts, in accordance with proper practices as set out in CIPFA/LASAAC *Code of Practice on Local Authority Accounting in the United Kingdom* (The Code).

In preparing this Statement of Accounts, the Finance and Corporate Services Director has:

- selected suitable accounting policies and then applied them consistently;
- made judgements and estimates that were reasonable and prudent; and
- complied with The Code, so far as was appropriate for a Passenger Transport Executive.

The Finance and Corporate Services Director has also:

- kept proper accounting records which were up to date; and
- taken reasonable steps for the prevention and detection of fraud and other irregularities.

Responsible Financial Officer's Certificate

I hereby certify that the Statement of Accounts gives a true and fair view of the financial position of TfGM as at 31 March 2023 and of its income and expenditure for the year ended 31 March 2023.

SG WARRENER

Managing Director and Finance and Corporate Services Director

[date]

ANNUAL GOVERNANCE STATEMENT

The Annual Governance Statement forms part of TfGM's Governance Framework and results from the requirement to conduct a review at least once a year of the effectiveness of its system of internal control, and to prepare a statement which forms part of the Annual Accounts. This statement covers the period from 1 April 2022 to the date the accounts are signed.

TfGM follows the principles of the CIPFA/SOLACE Framework *Delivering Good Governance in Local Government* which defines governance as comprising 'the arrangements put in place to ensure that the intended outcomes for stakeholders are defined and achieved.' It further states that 'To deliver good governance in the public sector, both governing bodies and individuals working for public sector entities must try to achieve their entity's objectives while acting in the public interest at all times. Acting in the public interest implies primary consideration of the benefits for society, which should result in positive outcomes for service users and other stakeholders.'

This Annual Governance Statement describes how effective TfGM's governance systems and processes are, and where further improvement activity is planned.

Scope of responsibility

TfGM is a body established by the South East Lancashire and North East Cheshire Passenger Transport Area (Designation) Order 1969 (SELNEC Order) that was made under the Transport Act 1968. It is:

- a Passenger Transport Executive under the Transport Act 1968;
- an executive body of the Greater Manchester Combined Authority (GMCA) for the purposes of the strategic functions referred to in Article 9(2) of the Greater Manchester Combined Authority Order 2011 (the GMCA Order); and
- to be treated as an officer of the GMCA for the discharge of functions delegated to the GMCA by other Local Authorities.

In discharging its functions, TfGM is responsible for putting in place proper arrangements for the governance of its affairs; and facilitating the effective exercise of its functions.

TfGM has followed the principles of the CIPFA/SOLACE Framework *Delivering Good Governance in Local Government: Framework (2016)* in preparing this statement. This Statement explains how TfGM has complied with the Framework and also meets the requirements of regulation 6(1) of the Accounts and Audit Regulations 2015, which require TfGM to publish a statement on internal control.

The Combined Authority and the Mayor

Greater Manchester Combined Authority (GMCA) and the Greater Manchester Mayor are the public entities that are responsible for the co-ordination of transport, regeneration and economic development functions for the Greater Manchester region. The creation of the Combined Authority in April 2011 saw a transfer of powers from central government to Greater Manchester. In November 2014 central Government and GMCA agreed plans for the further devolution of specific powers to Greater Manchester, including on a number of transport matters, and work has been carried out since, and will continue on implementing this Agreement. In May 2017 the Greater Manchester Mayor was elected pursuant to the GMCA (Election of Mayor with Police and Crime Commissioner Functions) Order 2016. In May 2021 Mayoral elections took place again and Andy Burnham was re-elected.

Greater Manchester will get new responsibilities over transport as part of the city-region's most significant devolution deal with Government. The new Trailblazer Deal announced in March 2023 includes more influence on regional rail services to deliver a London-style integrated public transport system - the Bee Network - by 2030.

The following GMCA functions are reserved to the Mayor, provided that any exercise of the Mayor of these functions requires a vote in favour by at least eight members of the GMCA:

- developing policies for the promotion and encouragement of safe, integrated, efficient and economic transport to, from and within Greater Manchester under s108(1)(a) of the Transport Act 2000;
- the adoption, approval, amendment, modification, revision, variation, withdrawal or revocation of a local transport plan (LTP) under s108(3) of the Transport Act 2000; and
- the duty to keep the local transport plan under review and alter it if considered appropriate to do so including replacing the plan under s109(1) or (2) of the Transport Act 2000.

GMCA and the constituent councils are party to joint arrangements under Section 101(5) of the Local Government Act 1972, Section 20 of the Local Government Act 2000 and Regulations 4, 11 and 12 of the Local Authorities (Arrangements for Discharge of Functions) (England) Regulations 2000 for the discharge of specified transport functions. This includes through a joint committee which until 4 April 2019 was the Transport for Greater Manchester Committee (TfGMC). On 4 April 2019 the GMCA (Functions and Amendment) Order 2019 (Order 3) came into force. It dissolved TfGMC and made provision for the establishment of a joint committee of the GMCA, the constituent councils, and the Mayor. This committee is the Greater Manchester Transport Committee (GMTC). GMTC has had delegated to it the majority of the functions that were delegated to the TfGMC from the GMCA and the Mayor.

Order 3 also provided for the transfer of certain functions from TfGM to the GMCA and the Mayor. These functions are primarily related to TfGM's duties to contract with and reimburse public transport operators to provide subsidised services and concessionary travel; and is intended to align with the Bus Services Act 2017. The GMCA and the Mayor have delegated back to TfGM those functions that TfGM previously exercised.

Over the last few years TfGM has led the work on bus reform which has been carried out in accordance with the Bus Services Act 2017. This required the preparation of a detailed business case; a full assessment; an external audit of the assessment; and a public consultation on the proposals. Following the onset of the pandemic, a further report was prepared on the impact of Covid-19. In March 2021 the Mayor made a decision to introduce bus franchising in Greater Manchester. Two bus operators challenged the decision. However, following a judicial review the claims were dismissed and the process to implement Bus Franchising has continued through 2022/23. This has included, in December 2022, the award of the contracts to operate the first tranche of franchised services, which are due to start operating in September 2023.

TfGM's Governance Framework

TfGM's Governance Framework comprises the systems and processes, and the culture and values, by which TfGM is directed and controlled, and the activities through which it is made accountable to, engages with, and supports the community. The Governance Framework enables TfGM to monitor the achievement of its corporate objectives and to consider whether those objectives have led to the delivery of appropriate, cost effective services.

The system of internal control is a significant part of the Governance Framework and is designed to manage risk to a reasonable level. It cannot eliminate all risk of failure to achieve policies, aims and objectives and can therefore only provide reasonable assurance and not absolute assurance of effectiveness. Internal control is an ongoing process, designed to identify and prioritise the risks to the achievement of TfGM's policies, aims and objectives, to evaluate the likelihood of those risks being realised and the impact should they be realised, and to manage them efficiently, effectively and economically.

The internal control environment includes TfGM's policies, procedures and operations that are in place to:

- establish and monitor the achievement of TfGM's objectives;
- identify, assess and manage risks to achieving these objectives;
- facilitate policy and decision making;
- ensure value for money;
- ensure compliance with established policies (including ethical expectations), procedures, laws and regulations;

- safeguard its assets and interests from losses such as those arising from fraud, irregularity or corruption; and
- ensure the integrity and reliability of information, accounts and data including internal and external reporting and accountability processes.

The Governance Framework forms part of TfGM's Constitution, which is reviewed and updated regularly. The latest review has been ongoing in 2022/23 and is due to be completed early in financial year 2023/24.

The leadership and decision-making functions within TfGM are exercised by the Executive Board, which is the ultimate decision-making body within TfGM and is responsible for determining strategic issues and policy on the exercise of its powers and the conduct of its business. The Executive Board consists of seven Statutory Directors appointed in accordance with s9(2) Transport Act 1968, including the Chief Executive who is the Director General of the Executive. Four of the Directors are Non-Executive Directors, of which three are independent, including the Senior Non-Executive Director, reflecting best practice guidance for corporate governance, adapted for TfGM's specific circumstances, including the UK Corporate Governance Code published by the Financial Reporting Council (which is intended for limited companies).

The Executive Board as a whole is collectively responsible for the success of TfGM. The Board's role is to:

- contribute to strategic planning and structured decision-making;
- set challenging goals and objectives for the organisation;
- monitor the performance of the Executive in meeting its strategic objectives; and
- offer constructive criticism and challenge to the Executive Directors.

The Executive Board has delegated the oversight of service delivery and the infrastructure pipeline to the Performance Board and the Capital Pipeline Programme Board. The responsibilities of these bodies are set out in TfGM's Governance Framework and Constitution. The Constitution specifies the particular functions of the Executive Board which may not be delegated.

A review of the effectiveness of the Executive Board is undertaken annually, with the most recent review ongoing and the results due to be finalised in early Summer 2023.

The CIPFA/SOLACE Framework

The overall aim of the CIPFA/SOLACE Framework ('the Framework') is to ensure that resources are directed in accordance with agreed policy and according to priorities; that there is sound and inclusive decision making; and that there is clear accountability for the use of resources in order to achieve desired outcomes for service users and communities. The Framework positions the attainment of sustainable economic, societal and environmental outcomes as a key focus of governance processes and structures.

Defining the Core Principles and Sub-Principles of Good Governance

The fundamental function of good governance in the public sector is to ensure that public bodies achieve their intended outcomes while acting in the public interest at all times. The CIPFA/SOLACE Framework defines seven core principles of good governance in the public sector and how they relate to each other.

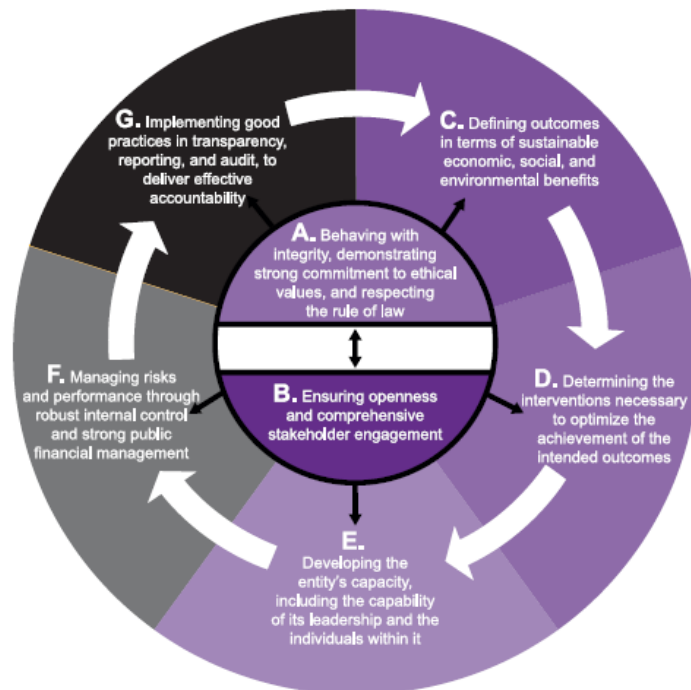
Acting in the public interest requires a commitment to and effective arrangements for:

- A: Behaving with integrity, demonstrating strong commitment to ethical values, and respecting the rule of law.
- B: Ensuring openness and comprehensive stakeholder engagement.

Achieving good governance in the public sector also requires effective arrangements for:

- C: Defining outcomes in terms of sustainable economic, social, and environmental benefits.
- D: Determining the interventions necessary to optimise the achievement of the intended outcomes.
- E: Developing the entity’s capacity, including the capability of its leadership and the individuals within it.
- F: Managing risks and performance through robust internal control and strong public financial management.
- G: Implementing good practices in transparency, reporting, and audit, to deliver effective accountability.

The Framework illustrates the principles using the diagram below, taken from the International Framework: Good Governance in the Public Sector (CIPFA/IFAC, 2014) (the ‘International Framework’).



The International Framework notes that ‘Principles A and B permeate implementation of principles C to G’. The diagram also illustrates that good governance is dynamic, and that an entity as a whole should be committed to improving governance on a continuing basis through a process of evaluation and review.

TfGM’s alignment with the CIPFA/Solace Principles

Principle A: Behaving with integrity, demonstrating strong commitment to ethical values, and respecting the rule of law.

TfGM has the power to implement the decisions of the GMCA and the Transport Committee, and those decisions which may be delegated to it by the Mayor; and is particularly responsible for implementing the transport and traffic functions of the Combined Authority.’

In fulfilling this role, TfGM is responsible for ensuring that its activities are conducted in accordance with the law and proper standards, that public money is safeguarded and properly accounted for, and used economically, efficiently and effectively.

Sub-Principle: Behaving with integrity

The Executive Board is fully committed, through its policies and actions, to maintaining high standards of conduct and behaviour and to promoting a culture in which these can be openly practised. This is supported by a set of Values which are reviewed regularly including through engagement with staff. The latest review has taken place through 2022/23 and an updated set of Values has been agreed as part of the Business Plan for 2023/24.

The updated Values are 'Deliver'; 'Adapt' and 'Care' and these new Values support an updated Vision, Purpose and Mission for TfGM; all of these are described in the Narrative Report within this set of Accounts.

In order to maintain awareness, the Values are re-iterated in key corporate documents, and they underpin the performance management and business planning processes. The Values are an integral part of the induction process for all new staff. TfGM has implemented a Code of Conduct which consolidates a number of existing policies and procedures into a single Code and which underpins the Values.

TfGM has adopted the Guidance entitled "Openness and transparency on personal interests" as published by DCLG. All staff with responsibility for specification, evaluation or procurement, and those who attend and contribute to decision making at the Executive Board meetings, or any meetings of its delegated Boards or Committees, are required to declare their interests in a centrally held register, which is reviewed annually or updated as required on any notifiable changes in interests.

In addition, attendees at each meeting of a decision-making Board or Committee are asked to confirm their registered declarations of interest and declare in addition any interest in any contract or matter to be discussed at the meeting.

TfGM takes fraud, corruption and maladministration very seriously. The following Policies and Procedures are in place:

- a Whistleblowing Policy;
- A Counter Fraud and Corruption Policy;
- Fraud Response Procedures;
- An Anti-Bribery Policy;
- An Anti-Money Laundering Policy and Procedure.

All of these policies are reviewed, and where appropriate updated, in line with an agreed review cycle where appropriate and in line with an agreed review cycle. The above policies and procedures underwent a comprehensive review during 2021, and were approved by the Audit and Risk Assurance Committee in December 2021 who agreed an ongoing review cycle of every two years. The next scheduled review is therefore to take place in 2023 and to be reported to the Audit and Risk Assurance Committee in December 2023. There is also a Counter Fraud Strategy and an annual work programme to direct counter fraud activities and any necessary improvements to the design or operation of the counter-fraud framework.

Staff awareness and understanding of the policies is supported by a mandatory e-learning programme and periodic communications and exercises in relation to online threats. Every two years TfGM participates in the National Fraud Initiative programme which is carried out by the Cabinet Office.

Sub-Principle: Demonstrating strong commitment to ethical values

TfGM has robust policies and procedures for ensuring integrity and compliance with ethical standards, both by TfGM staff and external providers of goods and services.

TfGM's Constitution includes the Financial Regulations and Procurement Rules which are binding on all staff.

Major procurements require suppliers to submit information regarding their organisations (or where appropriate, their Directors') including :

- confirming non-participation in criminal organisations, corruption, fraud, terrorist or related activities, money laundering, child labour or trafficking in human beings;
- compliance with the Modern Slavery Act 2015;
- the health and safety performance of the organisation and their supply chain;
- compliance with equality legislation;
- compliance with environmental legislation; and
- where applicable, all contracts include a commitment to the economic and social regeneration of Greater Manchester as part of the Public Services (Social Value) Act in a reasonable and proportionate manner.

Work has been undertaken, and will continue, to strengthen TfGM's identification and mitigation of the risks of modern slavery and human trafficking in the supply chain, including contacting existing suppliers requesting a statement of compliance, and developing strengthened clauses and wording in all relevant documents. An e-learning course on modern slavery and human trafficking has also been launched to improve staff awareness and the policy has been published on the TfGM web site.

Sub-Principle: Respecting the rule of law

TfGM's Constitution documents procedures including financial regulations and procurement rules. This is compliant with the duties and responsibilities of TfGM provided under the Transport Acts 1968, 1983, 1985 and 2000, the Local Government Act 1972, the Transport Works Act 1992 and the Greater Manchester Combined Authority Order 2011.

Officers in exercise of delegated powers under the Scheme of Delegation must ensure decisions are taken in accordance with legal requirements; the provisions of the Constitution; capital and revenue budgets; and established policies, plans and procedures. These have been communicated to all staff.

TfGM is not subject to legislation requiring the discharge of the statutory duties of a Monitoring Officer, however, the Head of Legal Services carries out the equivalent duties, where appropriate, with overall responsibility for legal issues. All reports to the Executive Board, Capital Pipeline Programme Board and Performance Board include details of any legal considerations and / or implications.

Principle B: Ensuring openness and comprehensive stakeholder engagement

The Executive Board is the ultimate decision-making body within TfGM and is responsible in particular for determining strategic issues consistent with GMCA policies.

TfGM carries out a range of engagement and consultation activities with wide ranging stakeholders throughout the year.

TfGM's Partnerships, Engagement and Inclusion team aims to build and maintain effective strategic partnerships to ensure that the organisation understands, listens to and influences appropriately across all aspects of transport and end-to-end journeys. This includes engagement with businesses, employers, community groups, education, voluntary sector, residents, councils and those with protected characteristics. The team also designs and delivers statutory and non-statutory consultations and surveys, working closely with functions across the organisation to embed equalities considerations into planning and decision-making, whilst co-designing any activity with stakeholders where appropriate.

Key related activity during 22/23 has included engagement in support of the pilot and subsequent decision to allow dogs on Metrolink; co-design of the interactive portal targeted at business and employers to support sustainable travel planning; ongoing work with representative groups to review the concessionary pass process for applicants with autism; development of TfGM's White Ribbon action plan to tackle violence against women and girls through engagement

sessions; and an ongoing programme of engagement and co-design with accessibility groups in support of the transition to bus franchising, including activity focused on fleet design and customer information.

TfGM also continues to support local authorities in the development and delivery of their cycling and walking consultation activity as part of the Bee Active network. Additionally, TfGM has acted on behalf of the ten Greater Manchester local authorities to undertake consultation activity on a number of new/upgraded crossings and junction improvements to enable more walking and cycling by making the roads safer.

Sub-Principle: Openness

TfGM is committed to open governance and to meeting its legal responsibilities under the Freedom of Information Act 2000.

The Local Government Transparency Code (2015) applies to all Local Authorities, including Integrated Transport Authorities and Combined Authorities, but does not apply to Passenger Transport Executives. However, TfGM is committed to transparency and as such voluntarily complies with the Transparency Code, publishing as much information as possible and practicable.

TfGM publishes a substantial amount of public information through the GMCA and the Transport Committee. This includes regular financial updates, and updates on the status of the capital programme delivery and the performance of the modes of transport. All decisions which require the approval of the GMCA or the Transport Committee are put before a public meeting prior to a resolution being reached, with the exception of those decisions that under section 100 (A) (4) of the Local Government Act 1972 would involve the likely disclosure of exempt information.

All decisions that TfGM requests of the GMCA, the Transport Committee or the Mayor, which are considered to be a Key Decision under The Combined Authorities (Overview and Scrutiny Committees, Access to Information and Audit Committees) Order 2017 are published on the GMCA's Key Decision Register a minimum of 30 days in advance of the decision being taken. This gives notice to the public and GMCA's Overview and Scrutiny Committees of forthcoming decisions which are over £500,000 in value, or that are significant in terms of its effects on persons living or working in an area comprising two or more wards or electoral divisions in the area of the Combined Authority.

Sub-Principle: Engaging comprehensively with institutional stakeholders

Greater Manchester has a long tradition of working in partnership to achieve its objectives. The partners in the 'GM Family' include the GM Mayor, ten Local Authorities and their Leaders, and the Greater Manchester Local Enterprise Partnership (LEP), reflecting the voice of local businesses. The 'GM Family' work closely together to ensure the provision of joined-up, coordinated services that provide value for money for local residents and businesses and realise the shared vision for the area.

The Mayor's Transport Board brings together decision makers from key agencies involved in the operation of, and strategic planning for, GM's transport network. Its objective is to drive continuous customer-focused improvement across the GM transport system; promote integrated and efficient service delivery; and establish a forum for integrated strategic planning for, and investment in, GM's transport network. TfGM continues to participate in the forum, providing regular transport performance reports.

Supporting the Mayor is the Transport Commissioner, Vernon Everitt, who was appointed in April 2022 to play a leading role in the delivery of the Bee Network. In addition the Mayor is supported by an Active Travel Commissioner, Dame Sarah Storey, Dame Sarah will advise the Mayor on the delivery of the Bee Network active travel vision.

The Memorandum of Understanding signed with Highways England continues to facilitate working in partnership towards a long-term vision for motorways and key roads across Greater Manchester.

The process of developing the Transport Delivery Plan (described in detail under Principle D below) involved: district planning and transport officers; Highways England; TfGM and other partners.

Sub-Principle: Engaging with individual citizens and service users effectively

The functions of the Executive Board reflect TfGM's key responsibilities, which includes providing a high quality customer service to people using the Greater Manchester transport networks.

Putting the customer experience at the heart of how we design and deliver services is a key priority for TfGM as we make progress towards implementing the Bee Network.

In response to listening to customers, we have adopted a collaborative approach across all our frontline operations to reassure people returning to the public transport network. This has been in partnership with our Travelsafe initiative that has undertaken targeted operations to reduce anti-social behaviour and fare evasion at key hotspots across the network.

We recognise that providing an integrated ticketing and information customer proposition is going to be fundamental in our future success. Over the last 12 months we have continued to make progress across our ticketing and information services. This has included the introduction of single and daily capped fares on bus across Greater Manchester in September 2022 and the introduction of weekly capped fares on bus in January 2023. A new integrated ticketing and information Mobile Application is being developed that will enable customers to plan and pay for their travel. |

Principle C: Determining outcomes in terms of sustainable economic, social, and environmental benefits

In 2015, GMCA agreed to review the Local Transport Plan (LTP) to reflect future emerging transport priorities for Greater Manchester and the transport devolution and reform programmes underway.

It was agreed that an approach would be taken to develop a new Greater Manchester transport strategy, comprising two key statutory LTP documents, rather than a single LTP document. These will cover different priorities and time horizons in a more integrated, multi-modal way, enabling a greater degree of flexibility and focus, and allowing documents to be reviewed and updated on a more regular basis in response to significant changes in context.

The main statutory documents comprising Greater Manchester's current LTP are:

- **Greater Manchester Transport Strategy 2040** - a document setting out our strategy giving details of policies, interventions and schemes to support delivery of a vision for transport in 2040. This was published in 2017 and updated in 2021. A link to the latest version of the 2040 Strategy is included [here](#); and
- **Our Five-Year Transport Delivery Plan 2021-2026** – setting out more detailed delivery proposals, a spending plan and monitoring of the performance of transport delivery programmes for 2021-26. This was published in January 2021 and a link to the document is included [here](#)

These documents are supported by an Integrated Assessment (covering environmental, health and equalities issues) and a travel and transport Evidence Digest that is refreshed on a regular basis to provide an up-to-date evidence base and to support the ongoing development and review of the Transport Strategy.

Sub-Principle: Defining Outcomes

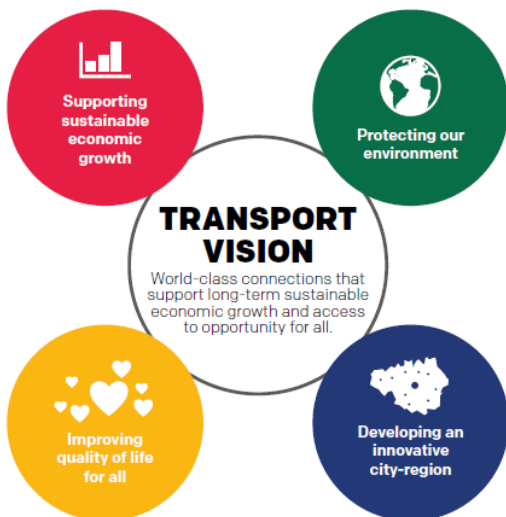
The Five Year Transport Delivery Plan was published in January 2021 and forms part of the Greater Manchester Transport Strategy 2040. The plan is structured around five themes:



The Transport Strategy Vision is for Greater Manchester to have **“World class connections that support long-term, sustainable economic growth and access to opportunity for all”**.

Greater Manchester’s transport system needs to help the local economy to prosper. It needs to allow residents to more fully contribute to and benefit from that prosperity. It also needs to play a part in creating better places and a better natural environment, and in improving people’s quality of life. The role of technology and innovation will be even more important in the period up to 2040, enabling GM to improve transport performance and quality of life, to reduce costs and resource consumption, and to provide tailored information and pricing to transport users, providing a much better customer experience.

The four key elements of GM’s Transport Strategy Vision are:



Sub-Principle: Sustainable economic, social and environmental benefits

To support sustainable economic growth and tackle congestion we need to: support the Greater Manchester Strategy, Places for Everyone Joint Development Plan and the refreshed Local Industrial Strategy; develop an increasingly successful Northern Powerhouse economy, with Greater Manchester as a major player at its heart; tackle congestion and

enable the efficient and effective movement of people and goods; and ensure transport contributes to high-quality, liveable and healthy neighbourhoods, town and city centres.

To improve quality of life we need to: create an inclusive and accessible transport network that enables access to opportunities; improve the connectivity, reliability and affordability of our networks for all; and encourage and support greater levels of walking and cycling.

To protect our environment and improve air quality we need to: reduce the impact of transport on the environment – particularly in terms of clean air and carbon reduction; and increase the use of sustainable transport to reduce the negative impacts of car use.

To capitalise on new technology and innovation we need to: embrace and champion innovation in the transport sector; and pilot new transport and travel technologies that support our 2040 priorities in line with the Local Industrial Strategy.

All appropriate schemes that are proposed, developed and delivered by TfGM are subject to an Equalities Impact Assessment to ensure fair access to services.

Principle D: Determining the interventions necessary to optimise the achievement of the intended outcomes

TfGM and Greater Manchester have a strong track record for delivery, built on a clear sense of direction and a strong system of governance that allows for development and refinement of priorities over time in support of the Greater Manchester Strategy. TfGM will ensure that there are robust delivery arrangements for investment schemes and programmes as they are confirmed. This will include collaborative working between TfGM, local authorities, national transport agencies and private sector partners wherever required.

The specific schemes to be delivered are, and will be, set out in a series of five-year Delivery Plans. In January 2021 the Joint GMCA/AGMA Executive Board approved the latest Five Year Transport Delivery Plan, running from 2021-2026. It sets out the planned interventions to deliver the Greater Manchester Transport Strategy 2040 and the Greater Manchester Strategy, and to enable a coordinated approach to transport investment. It contains the schemes and interventions necessary to begin to address the existing reliability and capacity issues on our transport network, to deliver a more sustainable and integrated transport system, and to deliver housing and employment growth.

The Five Year Transport Delivery Plan (2021-2026) was prepared in alignment with the Places for Everyone Joint Development Plan. The Five Year Transport Delivery Plan will be reviewed in conjunction with the Places for Everyone plan. The Places for Everyone spatial plan went through Examination in Public Hearings between November 2022 and end of March 2023. The refreshed GM Transport Strategy 2040 and Five Year Transport Delivery Plan (2021-26) are critical parts of the evidence base underpinning the Places for Everyone Plan. All strategically significant infrastructure is already included in Five Year Transport Delivery Plan.

Sub-Principle: Determining interventions

The GM Transport Strategy 2040 focuses on creating an integrated, sustainable, and well co-ordinated transport system which supports a wide range of different travel needs. The GM Transport Strategy 2040 sets out key principles that will be applied consistently across the networks over the period to 2040 to ensure that the entire transport system is more customer-focused and able to respond effectively to the challenges that lie ahead.

Customers are at the heart of the 2040 Transport Strategy, including residents, businesses and visitors to Greater Manchester. GM is also mindful of the different needs of passengers and freight as it plans and delivers the transport system. GM has therefore established seven core principles, set out below, together with the ambition for each, which will be applied across the transport network.



On an on-going basis TfGM assesses many areas and routes across Greater Manchester where improvements to transport provision may be required. This may be for many reasons. Typical examples are:

- an increase in population or growth in local economic activity leading to congestion and overcrowding on existing infrastructure, or a forecast that the capacity of existing infrastructure will soon be overwhelmed by the travel and transport needs of the people and businesses of an area;
- new housing, commercial or industrial developments requiring new infrastructure;
- a change to essential services, such as hospital provision, which can significantly change the direction in which many thousands of people need to travel, and goods and services need to be delivered;
- ageing infrastructure in need of replacement as it reaches the end of its economic life; or
- an increase in the understanding of the negative impacts of transport on local people, such as pollution, or conversely the impacts of isolation, requiring a reconsideration of transport policy nationally and transport provision locally.

When a need is identified, TfGM carries out studies, looking at local and strategic impacts, to investigate which mix of interventions is likely to provide the greatest benefits for customers and return best value for money for taxpayers, considering whole life cost.

TfGM aims to act as quickly as possible to improve services for its customers. Where major expenditure is needed, TfGM seeks to demonstrate a good balance of sustainable economic and social benefits at an appropriate cost. This facilitates the prioritisation of existing resources and bids for funding from government.

Sub-Principle: Planning interventions

The functions of the Executive Board reflect TfGM's key responsibilities, which include leading the development of transport strategy for Greater Manchester, shaping and influencing policy.

The Executive Board approves detailed revenue and capital budgets each year following determination by the GMCA of the Levy and other funding available to TfGM. TfGM undertakes a detailed 'bottom up' annual budget setting process whereby all budget holders are required to provide detailed budgets for all cost and income headings within their control.

TfGM's budgeting and business planning processes are integrated and aligned with the medium term financial strategy.

As has been noted in previous Annual Reports, TfGM's revenues and operating costs have been significantly impacted by a combination of factors including the pandemic and certain supply side shocks due to geo-political factors including the war in Ukraine. TfGM has been developing a Financial Sustainability Plan and this has been a key part of the budget process for 2023/24.

Whilst patronage is now recovering strongly, reflecting the region's population growth and our marketing campaigns to offer affordable alternatives to car travel, the recurrent impacts of the pandemic and the subsequent exceptional inflationary pressures means that the public transport network will continue to face financial challenges in 2023/24 and beyond. TfGM have been in discussions with DfT officials with a view to securing a continuation of financial support for the Metrolink and Bus networks for the next two financial years (2023/24 and 2024/25).

These discussions are continuing, and TfGM continues to work with DfT officials with a view to bringing the discussions to a successful conclusion as soon as possible. In addition, TfGM will continue to consider options, for subsequent consideration by GMCA, for longer term financial sustainability beyond the next two financial years.

The oversight of day-to-day performance against the budget and business plan is delegated to the Performance Board, which receives detailed monthly performance reports.

Following approval of the budget, progress against targets is monitored on a regular basis including the preparation of monthly management accounts which includes a review of key variances to agreed budgets. Budget monitoring reports are presented monthly to the TfGM Executive Board and quarterly to GMCA.

The Executive Board has delegated to the Capital Pipeline Programme Board the authority to:

- approve funding for capital and revenue schemes not already included within an approved budget, subject to appropriate approvals from GMCA;
- approve the release of funding from budgeted contingency allowances;
- scrutinise investment decisions which are not the responsibility of any other part of the organisation under the terms of the Constitution;
- monitor the progress of capital programmes and associated projects with respect to funding and schedule parameters and reviewing performance indicator data;
- ensure that projects and programmes are managed to budget, time and quality and are focused on the successful delivery of identified benefits; and
- review proposals for new programmes and constituent projects where funding is not yet identified and subsequently make recommendations to the Executive Board / GMCA for approval.

TfGM has a well-developed Procurement Strategy and approach which ensures that it complies with all legal and regulatory requirements as well as achieving best value in procurement processes. A Procurement Policy is in place which is available to all staff via the Intranet.

Sub-Principle: Optimising achievement of intended outcomes

TfGM has a strong history of successfully securing funding and delivering major transport schemes, including the Metrolink expansion and the first guided busway in the North West. TfGM is fully committed to building on its successes to date and ensuring the delivery of the Greater Manchester Transport Strategy.

TfGM has put in place proper arrangements to ensure economy, efficiency and effectiveness in its use of resources and regularly reviews the adequacy and effectiveness of those arrangements. As noted above TfGM is currently re-reviewing its medium term financial strategy in the context of the recovery for the Covid-19 pandemic and current cost inflationary challenges and the significant impacts these are having on revenues and costs.

A risk-based assurance approach is enhanced through the use of a risk complexity tool to assess risk and complexity early in the project lifecycle. The "CIFTER" toolset forms part of the Global Alliance for Project Performance Standards (GAPPS) which enables an organisation to categorise and evaluate projects in terms of risk and complexity against seven key factors and align that complexity to the Project Manager competence level as defined by the International Project Management Association (IPMA). The use of the CIFTER tool is strengthening the assurance approach, to help focus on deployment of the right resources to support successful delivery.

The Gateway Review Process continues to provide independent review of higher risk and major projects, at key stages in the project and programme lifecycle. These processes have operated successfully during the period.

Principle E: Developing the entity's capacity, including the capability of its leadership and the individuals within it

Whilst TfGM does not have a statutory duty under the Local Government Act 1999, it is nevertheless committed to achieving continuous improvement in the way its functions are exercised, having regard to a combination of economy, efficiency and effectiveness, with particular emphasis placed on achieving value for money. The organisation continues to ensure that its governance and processes are fit for purpose to reflect delivery and service quality priorities and to meet the challenges of the operating environment.

Sub-Principle: Developing the entity's capacity

Effective local government relies on public confidence in organisations and their officers. Good governance strengthens credibility and confidence in public services. Public Bodies need people with the right skills to direct and control them effectively. Governance roles and responsibilities are challenging and demanding and TfGM needs people with the right skills to direct and control them effectively. In addition, governance is strengthened by the participation of people with many different types of knowledge.

TfGM's People Strategy sets out a number of strategic priorities including Leadership and Performance, Building Capability, Productivity and Cost-Effectiveness and a Values-Driven Organisational Culture.

Sub-Principle: Developing the capability of the entity's leadership and other individuals

There is a corporate induction programme for all new starters. In conjunction with a local induction delivered by the individual's line manager or supervisor, the induction process includes an eLearning module which provides an introductory overview of the structure of the transport networks across Greater Manchester and background information explaining TfGM's activities. The eLearning module also introduces new starters to key policies, procedures and processes.

During 2022-23 TfGM has been reviewing its processes whereby employees are set objectives. Regular 1-2-1s take place with line managers, along with regular health and wellbeing 'check-ins'. A revised performance review process 'My Impact' was launched in the year which aligns with the business plan and to strategic and functional objectives.

In addition, the Learning and Development team at TfGM has established Learning Champions across the organisation to facilitate the collation, consolidation and prioritisation of training requirements across departments. Training solutions are provided by a combination of in-house, online and external resources.

All staff have role profiles which clearly set out their roles and responsibilities. Role profiles are prepared in advance of the recruitment and selection process and assist TfGM in ensuring that all staff possess the necessary skills to undertake their roles.

TfGM has a Scheme of Delegation, as part of its Constitution, which is reviewed regularly. TfGM's Scheme of Delegation sets out details on levels of authority to approve expenditure. These have been communicated to all staff. In determining a Scheme of Delegation, TfGM has reserved powers within its Constitution in respect of those matters reserved for

collective decision making. The Scheme of Delegation sets out the authorities of individuals and the authorities delegated to the committees of the Board.

These governance processes give focus to decision making and make a clear distinction between the duties delegated for the day to day management of TfGM and those with respect to decisions on future activities or new ways of delivering its activities.

During the year TfGM again took part in the Best Companies survey, an independent research organisation that compiles and publishes the Sunday Times’ ‘Top Employers to Work For’ staff survey. The latest survey took place in February 2022 (with a further survey having closed in April 2023, currently awaiting results) and this has again put TfGM in the 1* organisation category with a slightly increased score from the previous year. TfGM has made the Best Companies lists for Top 100 Companies to work for in the North West and the Top 10 Large Not for Profit companies nationally.

A Remuneration Committee (now renamed the People Committee) of the Executive Board, composed of Non-Executive Directors has delegated responsibility from the Board to oversee remuneration policies and the remuneration of senior managers.

TfGM’s emphasis on Wellbeing has continued with the roll out of an updated Wellbeing Plan

TfGM is a member of the Greater Manchester Good Employment Charter.

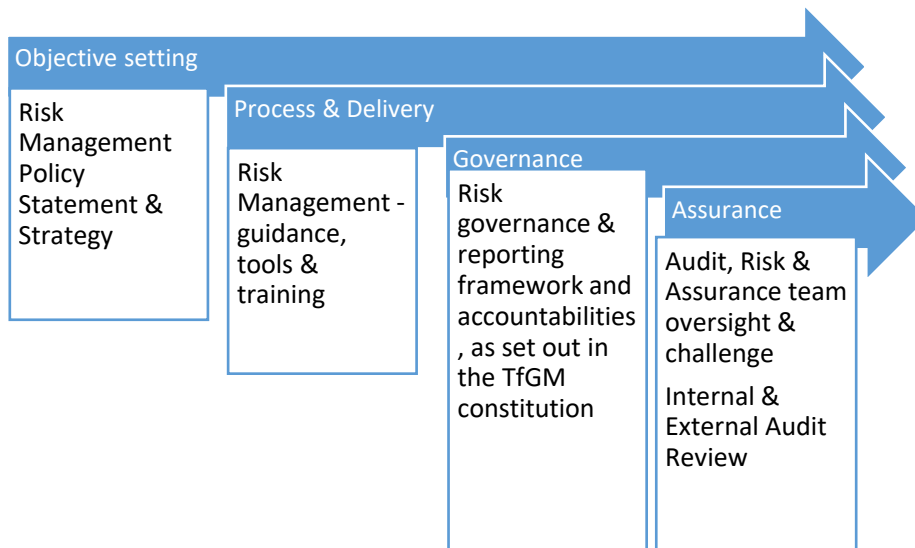
Principle F: Managing risks and performance through robust internal control and strong public financial management

Sub-Principle: Managing risk

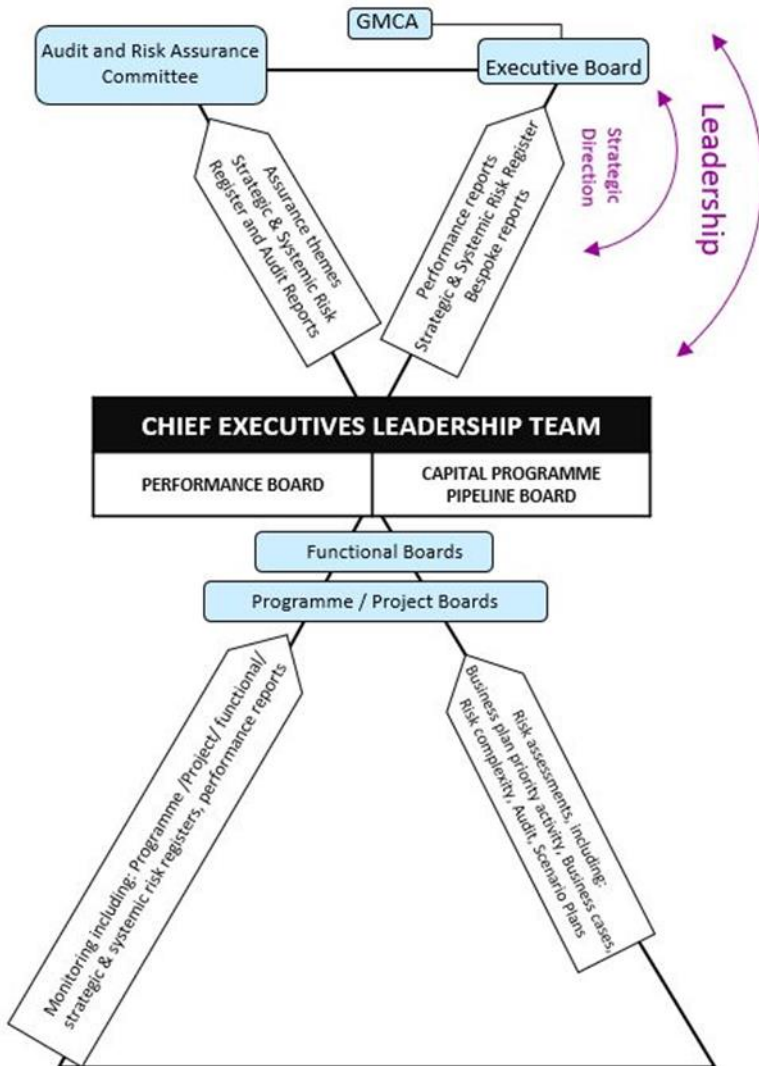
TfGM’s Risk Management Strategy sets out best practice drawing principally on guidance and standards in the International Standard in Risk Management – ISO 31000: 2018, The Orange Book, Management of Risk, and Management of Risk: Guidance for Practitioners issued by HM Treasury. TfGM’s risk management arrangements are compliant with the UK Corporate Governance Code (2018), as applicable for a non-listed organisation.

As part of TfGM’s corporate governance framework, the Executive Board has overall responsibility for the risk management framework and the Audit and Risk Assurance Committee has the responsibility for providing the Board with assurance that the risk management process in place is effective. The Audit and Risk Assurance Committee ensures quarterly oversight and review of the framework. Progress updates on risk management activities and any changes to the strategic risk profile are presented to each meeting of the Audit and Risk Assurance Committee.

Continued overview and oversight of the risk management framework is also provided across the organisation by the Audit, Risk and Assurance team, working with Functional Risk Champions and senior management, as shown in the diagram below. The framework ensures that risk at all levels of the organisation are appropriately and effectively managed.



TfGM's risk management framework incorporates both a 'bottom up' and 'top down' approach, as set out in the diagram below.



The Functional Boards and Performance Board are actively involved in the management and ownership of risk, in accordance with TfGM's Risk Management Strategy, in line with their terms of reference.

TfGM has a project risk management system and a corporate SharePoint site where all risk information is held and maintained centrally. The risks management system also provides the functionality to run quantitative risk analysis.

Robust and established risk processes are in place to ensure that risks at all levels (Strategic, Functional, Project and Programme) are well managed. Each risk is assigned an owner and actions designed to mitigate each risk are also assigned owners. Risks are regularly reviewed and reported in line with the TfGM Risk Management Strategy. This includes monthly reporting to Functional Boards and the Performance and Executive Boards, and quarterly reporting to Audit and Risk Assurance Committee. In addition, risk is considered in all reports presented to the Executive Board, Performance Board, Investment Board/Capital Pipeline Programme Board and Functional Boards. Arrangements for the management of project and programme risks are also embedded in project and programme procedures.

The Audit and Risk Assurance Committee, the Executive Board and the GMCA provide strategic direction and leadership, including determining TfGM's risk appetite.

During 2022/23, as part of regular updates, further thorough reviews of the strategic risk register were undertaken, with Senior Leadership Team reviews throughout the year.

The continuous improvement work during 2022/23 year focussed on:-

- rolling out learning and development activities to staff, including e-learning training and developing our Risk Champions;
- adopting the new Risk Appetite statements that were approved in the Risk Management Strategy to help the organisation and staff members to make better risk informed decisions; and
- continuing to strengthen key supplier continuity arrangements, including enhanced reporting and development and testing of key supplier continuity plans.

During 2022 Internal Audit undertook a review of Strategic, Systemic and Operational Risk Management and provided independent assurance on the positive progress that has been achieved in embedding risk management across the organisation. This included the proactive, collaborative and active risk management approach responding effectively to the unprecedented recent global events in the external operating environment. Improvement actions have now been implemented with Risk Champions, Risk Owners and Functional Boards with particular focus on driving risk management and control effectiveness improvements.

TfGM will continue to review and improve its risk management arrangements.

Business Continuity

TfGM's business continuity and resilience plans are regularly tested, including those where TfGM plays a role in Greater Manchester incident management and recovery. Formal lessons learnt exercises are undertaken internally and with Greater Manchester partners. Plans have continued to be reviewed and updated over the period to reflect outputs from exercises and specific reviews. For example during 2022/23 plans have been reviewed and updated in the context of the advent of bus franchising.

Sub-Principle: Managing performance

Co-ordination of TfGM's business planning and performance management processes are delegated to the Performance Board, including:

- monitoring key performance indicators and the priority tasks being undertaken and reporting key performance indicators and the priority tasks to the Executive Board; and
- monitoring the performance of transport networks and transport providers and ensuring the integration of activities, including events planning and incident management, across the modal networks;

Effective scrutiny of decisions and business performance is provided in a number of ways. Minutes of the business of the Performance Board and Investment Board /Capital Pipeline Programme Board are considered by the Executive Board. The Executive Board membership includes Non-Executive Directors to provide independent challenge and scrutinise both proposed decisions and the performance of TfGM Directorates and functions.

In support of the activities of the Performance Board and Investment Board /Capital Pipeline Programme Board, a number of Functional Boards meet at least monthly to review the Functional performance and progress in relation to implementation of programmes and projects. The number and terms of reference of such Boards are determined by the Performance Board.

Performance updates are reported to the Executive Board monthly. Regular performance updates are also presented to the GMCA, the Transport Committee and the Mayor's Transport Board.

Sub-Principle: Robust internal control

TfGM is responsible for conducting, on a regular basis, a review of the effectiveness of its governance framework including the system of internal control. The review of effectiveness is a responsibility administered by the Audit and Risk Assurance Committee and informed by the work of the Audit, Risk and Assurance team and also by comments made by the external auditors and other assurance providers.

TfGM is compliant with the CIPFA Code of Practice on Managing the Risk of Fraud and Corruption.

Sub-Principle: Managing data

TfGM is committed to safeguarding of all data including any personal data it holds and complies with current Data Protection legislation. The Assistant Director of Information Governance holds the role of Statutory Data Protection Officer. The Head of Legal Services holds the role of the Senior Information Risk Owner (SIRO). There is an IG Change programme underway overseen by the IG Board and biannually IG reports are submitted to the Audit and Risk Assurance Committee.

The General Data Protection Regulation (GDPR) came into effect on 25 May 2018. This, along with the Data Protection Act 2018 which gives effect to the EU Law Enforcement Directive and derogations to the GDPR, changed the UK data protection legislation.

TfGM has been focusing on GDPR compliance since the Regulation came into effect. An implementation plan for TfGM was developed and continues to be implemented. In particular, significant work has been undertaken to ensure that working practices meet the requirements regarding transparency and accountability under the Data Protection Act 2018.

Systems (internal or external) that are used to process card payments for TfGM operate to the Payment Card Industry Data Security Standard (PCI DSS). TfGM's PCI Accreditation is audited annually. All staff must complete a PCI DSS online training course as part of their induction process.

Sub-Principle: Strong public financial management

The functions of the Executive Board reflect TfGM's key responsibilities, which includes:

- stewardship of Greater Manchester's transport assets, including the maintenance and renewal of assets, and identifying and delivering enhancements; and
- ensuring effectiveness and efficiency in the discharge of TfGM business, securing value for money for the Greater Manchester public purse.

The system of internal financial control is based on a framework of regular management information, financial regulations, administrative procedures (including segregation of duties), management supervision, and a system of delegation and accountability. In particular, the system includes:

- comprehensive budgeting and forecasting systems;
- regular reviews of periodic and annual financial reports which compare financial performance against the budget and forecasts;
- setting targets to measure financial and other performance;
- clearly-defined capital expenditure guidelines; and
- formal programme and project management disciplines.

The proceedings of the Executive Board, Investment Board /Capital Pipeline Programme Board and Performance Board and the decisions taken are formally minuted. The minutes of the Executive Board are signed by the Chief Executive Officer and approved by the Executive Board. Mechanisms are in place to ensure that any conflicts of interest are declared and recorded.

Principle G: Implementing good practices in transparency, reporting, and audit, to deliver effective accountability

TfGM has a requirement under the Transport Act 1968 to seek the authorisation of the GMCA, or the Transport Committee where delegated, of specified decisions that TfGM may take while discharging its duties or exercising its powers. Where TfGM is acting on behalf of the GM Mayor or the GMCA, decisions to be taken are made by the Mayor or the GMCA, as appropriate.

Pursuant to the Combined Authorities (Overview and Scrutiny Committees, Access to Information and Audit Committees) Order 2017, TfGM provides the GMCA with timely and suitable information regarding the decisions that TfGM will ask the Mayor, the GMCA or the Transport Committee to authorise or take. The information is provided at least 30 days in advance and published on the GMCA's website within its 'Key Decisions Register'.

Sub-Principle: Implementing good practice in transparency

TfGM published the Greater Manchester Transport Vision and Strategy, and each year publishes its Annual Accounts on its website. In addition, TfGM produces status reports, reports consulting on decisions, and performance reports to the GMCA and the LEP and also provides reports to meetings of the Transport Committee, which is a public committee focused on providing political oversight of TfGM's activities.

TfGM also provides reports and information to the GMCA's Overview and Scrutiny Committees to support understanding of GMCA's policy development, decisions, and activities in relation to transport.

Sub-Principle: Implementing good practices in reporting

TfGM is committed to reporting on its activities in a manner which is accessible to the intended audience. Reports are prepared such that they are easily understood and provide appropriate and timely information. TfGM's Annual Accounts are reported in compliance with the CIPFA/LASAAC Code of Practice on Local Authority Accounting in the United Kingdom. Reporting to TfGM's Executive Board complies with the UK Corporate Governance Code.

Sub-Principle: Assurance and effective accountability

TfGM has an Audit and Risk Assurance Committee, which meets quarterly, chaired by an independent Non-Executive Director of the Executive Board, to support the Board in discharging its responsibilities with regard to risk, control and governance and associated assurance. In particular, the Audit and Risk Assurance Committee advises the TfGM Board on:

- the overall adequacy and effectiveness of the strategic processes for risk management, internal control and the Annual Governance Statement;
- the robustness of financial controls, including the financial reporting process, accounting policies, and the Annual Report and Accounts of TfGM, to ensure that published financial information has integrity, is well balanced, and transparent; and also, the extent to which assets are safeguarded against fraud and irregularity;
- the adequacy of management responses to recommendations made by the internal and external auditors in their reports;
- progress against planned activity and results of both internal and external audit work; and
- the assurances obtained regarding the adequacy and effectiveness of TfGM's arrangements to satisfy the requirements of the CIPFA/SOLACE framework of corporate governance.

The governance arrangements for TfGM's Audit and Risk Assurance Committee reflect best practice guidance for corporate governance, adapted for TfGM's specific circumstances, including the CIPFA's Audit Committees: Practical Guidance for Local Authorities and Police (2013) and the Financial Reporting Council's Guidance on Audit Committees (which is intended for limited companies).

The Audit and Risk Assurance Committee's membership comprises three Members, who are independent Non-Executive Directors of TfGM's Board, and a fourth Member who is the Treasurer of the GMCA, bringing significant experience from both the public and private sector. The Executive Directors, Head of Audit and Assurance and other managers also attend, as required, at the invitation of the Chair.

The Audit and Risk Assurance Committee is responsible for reviewing the activity of internal and external audit in providing assurance over the effectiveness of internal controls. The Committee also meets at least annually in private with both the external auditors and the Head of Internal Audit, without the presence of executive management.

A review of the Committee's effectiveness is underway as part of the Executive Board effectiveness review. Previous ARAC effectiveness reviews found that the Committee was functioning effectively and had fulfilled its role.

Audit, Risk and Assurance

The Audit, Risk and Assurance team provide a fully integrated approach to the provision of line 2 and line 3 assurance to TfGM. The team is structured with separate teams reporting independently to the Head of Audit, Risk and Assurance, with clear separation between line 2 & 3 activities.

The Head of Audit, Risk and Assurance reports quarterly to the Audit and Risk Assurance Committee, providing updates on Internal Audit, assurance and risk management activities.

The Risk and Assurance team provide an assurance service to SROs and the Executive across projects and programmes. This includes undertaking Gateway Reviews and 'Health Checks' at key stages in project and programme lifecycles and the subsequent reporting of recommendations to the relevant Boards.

The team have also lead on development of the 2023/24 Business Plan; and are responsible for leading on the implementation of the Risk Management framework, including providing challenge on the effectiveness of risk management controls across the organisation.

Internal audit

The Internal Audit service that objectively examines, evaluates, and reports on the adequacy of internal control as a contribution to the proper, economic, efficient and effective use of resources.

The function operates in accordance with the Public Sector Internal Audit Standards (PSIAS). The work of internal audit is primarily informed by the Internal Audit Strategy which is a three-year strategy based on the assessment of risk faced by TfGM. The risk assessment is kept under regular review and is refreshed in line with changes in the internal or external risk landscape. An annual internal audit plan is then developed based on the three-year strategy. Both the Strategy and the Internal Audit Plan are approved by the Audit and Risk Assurance Committee. Regular progress updates are provided to management and the Audit and Risk Assurance Committee.

The Head of Audit, Risk and Assurance has access to all Executive Officers, Non-Executive Directors and Members and also meets privately with the Audit and Risk Assurance Committee at least annually.

The Head of Audit, Risk and Assurance is required to provide an annual Head of Internal Audit opinion on the effectiveness of the arrangements in place for governance, risk management and internal control. The opinion is based upon and limited to the work performed during the financial year, as well as consideration of other sources of assurance.

On the basis of the audits undertaken during this reporting period, and other sources of assurance available, reasonable assurance can be given over the arrangements in place for governance, risk management and internal control.

An external quality assessment of the effectiveness of the Internal Audit function was last performed in 2019/20. The key conclusion from this assessment was that the function was compliant with Public Sector Internal Audit Standards (PSIAS). Some improvements were identified to further improve its effectiveness which have since been implemented. In line with good practice, a self-assessment of the effectiveness of the internal audit function has been undertaken by the Head of Audit, Risk and Assurance in 2022/23 and has concluded that the function has operated in conformance with PSIAS.

External audit

The external auditors will issue the following reports in respect of the 2022/23 financial year:

- Audit Strategy Memorandum;
- Audit Completion Report; and
- Auditor's Annual report including a commentary on the Value for Money arrangements.

Review of Effectiveness

TfGM is committed to a culture of continuous improvement and ensuring value for money. The Annual Governance Statement identifies areas where improvements have been and are continuing to be made. As part of the drive for continuous improvement and value for money TfGM will continue to focus its efforts on these and other areas during 2023/24. The Audit and Risk Assurance Committee and TfGM Executive Board will closely monitor these improvements.

Conclusion

On the basis of the review of the sources of assurance set out in this statement, the Directors are satisfied that, throughout the year and up to the date of the approval of the accounts, TfGM had in place satisfactory systems of internal control which facilitate the effective exercise of the organisation's functions.

EJ BOYLAN

SG WARRENER

*Director**Director*

[2023]

**INDEPENDENT AUDITOR'S REPORT TO THE DIRECTORS OF
TRANSPORT FOR GREATER MANCHESTER**

To be added

**INDEPENDENT AUDITOR'S REPORT TO THE DIRECTORS OF
TRANSPORT FOR GREATER MANCHESTER**

To be added

**INDEPENDENT AUDITOR'S REPORT TO THE DIRECTORS OF
TRANSPORT FOR GREATER MANCHESTER**

To be added

**INDEPENDENT AUDITOR'S REPORT TO THE DIRECTORS OF
TRANSPORT FOR GREATER MANCHESTER**

To be added

COMPREHENSIVE INCOME AND EXPENDITURE STATEMENT for the year ended 31 March 2023

The Comprehensive Income and Expenditure Statement shows the accounting cost in the year of providing services in accordance with generally accepted accounting practices, rather than the amount to be funded from revenue grants (or other income). TfGM receives funding from the ten local authorities in Greater Manchester and the Mayoral Budget to cover expenditure in accordance with statutory requirements; this may be different from the accounting cost. The cost of providing these services is shown in both the Expenditure and Funding Analysis and the Movement in Reserves Statement.

2021/22				2022/23			
Gross Expend-iture £000	Gross Income £000	Net Expend-iture £000		Notes	Gross Expend-iture £000	Gross Income £000	Net Expend-iture £000
(57,698)	-	(57,698)	Concessionary fare schemes		(61,302)	-	(61,302)
-	-	-	Capped Fares Scheme		(14,908)	14,908	-
(37,314)	9,062	(28,252)	Supported bus services		(48,046)	10,866	(37,180)
(82,419)	81,359	(1,060)	Metrolink		(95,509)	83,788	(11,721)
(3,521)	-	(3,521)	Accessible transport		(3,686)	-	(3,686)
(6,795)	7,586	791	Management of traffic signals		(7,446)	8,352	906
(7,498)	8,615	1,117	Road safety activities		(9,093)	10,465	1,372
(5,112)	5,112	-	Provision of third party passenger transport facilities	6	(11,919)	11,919	-
(175,784)	19,294	(156,490)	Operational and other costs	7	(194,064)	24,173	(169,891)
(376,141)	131,028	(245,113)	Cost of services		(445,973)	164,471	(281,502)
(1,369)	34	(1,335)	Other operating expenditure	10e	(1,560)	-	(1,560)
(6,523)	403	(6,120)	Financing and investment income and expenditure	8	(5,461)	450	(5,011)
-	229,760	229,760	Taxation and non-specific grant income and expenditure	9	-	278,872	278,872
(384,033)	361,225	(22,808)	Surplus on provision of services	5	(452,994)	443,793	(9,201)
		3,680	Surplus or deficit on revaluation of non-current assets				-
		48,488	Remeasurement of the net defined benefit liability	18			148,950
		52,168	Other comprehensive income and expenditure				148,950
		29,360	Total comprehensive income and expenditure				139,749

All amounts relate to continuing operations. The notes from page 55 onwards form part of these accounts.

A statement is provided in the Financial Performance section of the Narrative Report by way of explanation of the total comprehensive income and expenditure reported under the Code of Practice on Local Authority Accounts and the actual revenue surplus retained / deficit incurred by the organisation.

MOVEMENT IN RESERVES STATEMENT for the year ended 31 March 2023

The Movement in Reserves Statements show the movement in the year on the different reserves held by TfGM, analysed into 'usable reserves' (i.e. those reserves that TfGM may use to provide services, subject to the need to maintain a prudent level of reserves and any statutory limitations on their use) and 'unusable reserves', which include reserves that hold unrealised gains and losses; and reserves that hold timing differences (for example the Capital Adjustment Account).

	Revenue Reserves £000	Unapplied Capital Grants and Contributions Account £000	Total Usable Reserves £000	Total Unusable Reserves £000	Total Reserves £000
At 31 March 2021	37,516	650	38,166	1,824,863	1,863,029
Total comprehensive income and expenditure	(22,808)	-	(22,808)	52,168	29,360
Adjustments between accounting basis and funding basis under regulations	35,457	237	35,694	(35,694)	-
Transfer between reserves	(1,318)	-	(1,318)	1,318	-
Increase / (decrease) in 2021/22	11,331	237	11,568	17,792	29,360
At 31 March 2022	48,847	887	49,734	1,842,655	1,892,389
Total comprehensive income and expenditure	(9,201)	-	(9,201)	148,950	139,749
Adjustments between accounting basis and funding basis under regulations	10,254	(316)	9,938	(9,938)	-
Transfer between reserves	(2,334)	-	(2,334)	2,334	-
Increase / (decrease) in 2022/23	(1,281)	(316)	(1,597)	141,346	139,749
At 31 March 2023	47,566	571	48,137	1,984,001	2,032,138

See note 19 for further analysis of the movement in reserves statement.

The notes from page 55 onwards form part of these accounts.

BALANCE SHEET at 31 March 2023

The Balance Sheet shows the value, as at the Balance Sheet date, of the assets and liabilities recognised by TfGM. The net assets of TfGM (assets less liabilities) are matched by the reserves held by TfGM. Reserves are reported in two categories – usable and unusable. Usable are those reserves that TfGM may use to provide services, subject to the need to maintain a prudent level of reserves and any statutory limitations on their use. Unusable reserves are those that TfGM is not able to use to provide services. This category of reserves includes reserves that hold unrealised gains and losses, where amounts would only become available to provide services if the assets are sold; and reserves that hold timing differences shown in the Movement in Reserves Statement line ‘Adjustments between accounting basis and funding basis under regulations’.

	Notes	31 March 2023 £000	31 March 2022 £000
ASSETS			
Long term assets			
Property, plant & equipment	10	2,001,979	2,002,708
Investment property		1,470	1,470
Intangible assets	12	18,682	12,448
Long term investments	11	4,450	4,450
Net pension asset	18	25,003	-
		<u>2,051,584</u>	<u>2,021,076</u>
Current Assets			
Short term debtors	13	94,284	101,825
Inventories		199	120
Cash and cash equivalents	14	40,605	17,458
		<u>135,088</u>	<u>119,403</u>
TOTAL ASSETS		<u>2,186,672</u>	<u>2,140,479</u>
LIABILITIES			
Current Liabilities			
Short term creditors	15	(99,172)	(71,958)
Provisions	15, 16	(2,235)	(2,804)
Short term borrowing	17	(7,857)	(13,232)
		<u>(109,264)</u>	<u>(87,994)</u>
Long term liabilities			
Provisions	16	(5,942)	(7,086)
Net pension liabilities	18	-	(106,654)
Long term borrowings	17	(39,328)	(46,356)
		<u>(45,270)</u>	<u>(160,096)</u>
TOTAL LIABILITIES		<u>(154,534)</u>	<u>(248,090)</u>
NET ASSETS		<u>2,032,138</u>	<u>1,892,389</u>
FINANCED AS FOLLOWS:			
Reserves as follows:			
Usable reserves	19	48,137	49,734
Unusable reserves	19	1,984,001	1,842,655
		<u>2,032,138</u>	<u>1,892,389</u>

The notes from page 55 onwards form part of these accounts.

E BOYLAN
Director
[date]

SG WARRENER
Director

CASH FLOW STATEMENT for the year ended 31 March 2023

The Cash Flow Statement shows the changes in cash and cash equivalents during the reporting period. The statement shows how TfGM generates and uses cash and cash equivalents and classifies cash flows into operating, investing and financing activities. The amount of net cash flows arising from operating activities is a key indicator of the extent to which the operations are funded by way of grant income or from the recipients of services provided by TfGM. Investing activities represent the extent to which cash outflows have been made for resources which are intended to contribute to future service delivery. Cash flows arising from financing activities are a useful indicator in predicting claims on future cash flows by providers of capital (i.e. borrowing) to TfGM.

	Note	2023 £000	2022 £000
Net (deficit)/surplus on provision of services		(9,201)	(22,808)
Adjustments to reconcile income to net cash flows:			
Adjustments for items included in the net surplus on the provision of services that are investing and financing activities			
Grants received for capital works		(91,748)	(65,243)
Finance cost	8	2,445	3,629
Interest paid		(2,817)	(3,639)
IAS19 pension finance interest	18	3,016	2,894
Adjustments for other non- cash movements			
Depreciation and amortisation	10, 12	85,326	84,002
Loss / (gain) on disposal of non-current assets	10	1,560	1,369
Loss / (gain) on disposal of short and long term investments	11	-	(34)
IAS19 pension service costs	18	23,304	22,639
IAS19 employer contributions	18	(9,027)	(7,646)
(Increase)/decrease in debtors		336	(40,638)
Decrease/ (increase) in inventories		(79)	9
(Decrease) / increase in creditors and provisions		26,882	(3,786)
Net cash flows from operating activities		29,997	(29,252)
Investing Activities			
Purchase of property, plant and equipment and intangible assets		(93,308)	(73,479)
Grants received for capital works		98,469	66,090
Proceeds from sale of property, land and equipment		20	(15)
Net cash flows from investing activities		5,181	(7,404)
Financing Activities			
Repayment of short and long term borrowings	17	(12,031)	(7,531)
Net cash flows from financing activities		(12,031)	(7,531)
Net increase/(decrease) in cash and cash equivalents		23,147	(44,187)
Cash and cash equivalents as at 1 April	14	17,458	61,645
Cash and cash equivalents as at 31 March	14	40,605	17,458

The notes from page 55 onwards form part of these accounts.

NOTES TO THE ACCOUNTS

1 Introduction

TfGM is required to prepare an annual Statement of Accounts in accordance with the Accounts and Audit Regulations 2015. These Regulations require Accounts to be prepared in accordance with proper accounting practices.

These practices primarily comprise the Code of Practice on Local Authority Accounting in the United Kingdom 2021/22, supported by International Financial Reporting Standards (IFRS).

2 Basis of Preparation

The accounts have been prepared on a historical cost basis, except for certain property assets that are measured at fair value, in accordance with the Code.

The financial statements have been prepared on a going concern basis as it is considered by the Board that TfGM will continue to operate for the foreseeable future and will be able to continue to meet its liabilities as they fall due for payment.

As set out in the Narrative Report, the coronavirus pandemic and the recent economic environment, which has seen significant inflationary pressures, have had a significant impact on the finances of TfGM. This includes, in particular, on passenger revenue from Metrolink, which continued to recover during the year but is still below pre pandemic levels, and Metrolink operating costs, which were impacted by inflationary pressures, in particular with respect to energy costs.

TfGM has continued to receive support from the DfT during the financial year, through its 'COVID-19 Light Rail Revenue Grant' however this ended on 4 October 2022. As set out in the Narrative Report, discussions are ongoing with DfT with regards to additional financial support alongside TfGM's Financial Sustainability Plan.

TfGM has also suffered reduced levels of income and additional costs in other areas of activity, including a reduction in bus service related incomes; reduction in commercial revenues; and significant additional costs incurred to support bus services to allow them to continue following withdrawal by bus operators due to the financial and commercial challenges faced by operators in the post-pandemic period. Government support has continued to be received to support bus services, which has provided funding for these costs in the period to 31 March 2023. Further recovery funding is being made available beyond that date which will help offset further shortfalls however the funding position beyond that is still uncertain and, as with Metrolink, further support to the bus sector is part of the funding discussions ongoing with DfT.

Based on the position set out above, the Directors have performed a review of the cashflow projections for a period of 12 months after the date of the signing of these financial statements, to support the preparation of the Accounts on the 'Going Concern' basis. The conclusion of this review is that there is a material uncertainty regarding the ongoing level of Metrolink net revenues and future bus support costs and the level of funding that will be received. Notwithstanding this, on the basis of the cashflow forecasts prepared and the current levels of available cash and reserves, the TfGM Executive Board considers that it remains appropriate to prepare the Accounts on the 'Going Concern' basis.

Statement of Compliance with IFRS

The following accounting standards have been issued but not yet adopted by the Code:

- IFRS 16 Leases.
- Where an authority adopted IFRS 16 in 2022/23 but chose to defer implementation of IFRS 16 to PFI/PPP arrangements until 2023/24 information on that more specific accounting change will be required in its 2022/23 statements of accounts.
- Definition of Accounting Estimates (Amendments to IAS 8).
- Disclosure of Accounting Policies (Amendments to IAS 1 and IFRS Practice Statement 2).
- Deferred Tax related to Assets and Liabilities arising from a Single Transaction (Amendments to IAS 12).
- Updating a Reference to the Conceptual Framework (Amendments to IFRS 3).

TfGM has adopted all aspects of the Code other than as follows:

- Deregulation Reserve: IFRS 5 would treat the deregulation of bus services in 1986 as a discontinued operation, leading to the write off of any costs connected with deregulation. However, the Transport Act of 1985 allowed any costs incurred on deregulation to be transferred to a specific reserve, called the 'Deregulation Reserve'. TfGM has adopted a policy of amortising the Deregulation Reserve over 30 years. Refer to note 18 for further details.

3 Summary of Significant Accounting Policies

3.1 Property, Plant and Equipment and Assets Under Construction

Items of property, plant and equipment are stated at cost less accumulated depreciation, with the exception of investment properties and non-infrastructure operational assets which are measured at fair value. TfGM's policy is to write off the carrying value of all assets, other than freehold land, on a straight line basis over their estimated remaining useful lives.

The range of estimated useful lives for each class of assets is as follows:

Freehold and long leasehold buildings	30 to 50 years
Short leasehold buildings	over the lease term
Infrastructure assets (see note * below)	15 to 50 years
Plant and equipment (including software)	10 to 15 years
Vehicles: Motor vehicles	3 to 5 years
Vehicles: Buses	Up to 15 years

* Infrastructure assets includes a number of categories of assets relating to the Metrolink network, Interchanges and Bus Stations, the Leigh to Ellenbrook Guided busway and cycle hubs.

Further details of the asset lives within this category are given below:

Civil structures	50 years
Stations	30 years
Track and track bed	20 to 30 years
Ticket machines and information points	20 years
Overhead power lines	30 years
Signalling/telecoms	20 years
Metrolink trams	30 years

The de minimis level for capitalising assets is £25,000 unless these form part of a larger asset when there is no de minimis level.

The cost of Metrolink includes £151.652 million (2022: £151.324 million) representing the costs of acquiring the land required for the system to be constructed. In accordance with standard accounting practice this land is not being depreciated.

Depreciation of assets, and amortisation of any grant funding its acquisition, commences with effect from the month following capitalisation. Capitalisation of assets is carried out as soon as practicable following its acquisition or completion.

Annual reviews are undertaken of the estimated remaining life and current carrying amount of assets; ensuring that significant assets are reviewed annually and other assets are reviewed at least every three years. Adjustments to the carrying amount, or remaining useful life, are made where necessary.

An item of property, plant and equipment is derecognised upon disposal, replacement or when no future economic benefits are expected to arise from the continued use of the asset. Any gain or loss arising on derecognition (calculated as the difference between the net disposal proceeds and the carrying amount) is included in the Comprehensive Income

and Expenditure Statement in the year the item is derecognised, offset by the write-back of any grant funding that has been received and which has not been released to the Revenue Reserve.

For the ongoing measurement of property, plant and equipment, TfGM adopts the Code, which requires the fair value method to be applied to non-infrastructure operational assets and surplus assets. Where a fair value cannot be obtained the cost model will be used in IAS 16. Assets classified as infrastructure include all Metrolink assets, bus stations, interchanges, turning points, bus shelters and other route equipment and works.

As permitted by the Code, the carrying value of property, plant and equipment in existence on the transition date to IFRS of 1 April 2010 has been treated as deemed cost at the transition date.

Assets under construction relate to expenditure incurred in respect of assets which are incomplete as at the reporting date. The assets are transferred to the appropriate heading and depreciated when they become available for use.

3.2 Fair Value measurement

TfGM measures some of its non-financial assets such as surplus assets and investment properties at fair value at each reporting date. Fair value is the price that would be received to sell an asset or paid to transfer a liability in an orderly transaction between market participants at the measurement date. The fair value measurement assumes that the transaction to sell the asset or transfer the liability takes place either:

- in the principal market for the asset or liability, or
- in the absence of a principal market, in the most advantageous market for the asset or liability.

TfGM measures the fair value of an asset or liability using the assumptions that market participants would use when pricing the asset or liability, assuming that market participants act in their economic best interest.

When measuring the fair value of a non-financial asset, TfGM takes into account a market participant's ability to generate economic benefits by using the asset in its highest and best use or by selling it to another market participant that would use the asset in its highest and best use.

TfGM uses valuation techniques that are appropriate in the circumstances and for which sufficient data is available, maximising the use of relevant observable inputs and minimising the use of unobservable inputs.

Inputs to the valuation techniques in respect of assets and liabilities for which fair value is measured or disclosed in TfGM's financial statements are categorised within the fair value hierarchy, as follows:

- Level 1 – quoted prices (unadjusted) in active markets for identical assets or liabilities that the authority can access at the measurement date;
- Level 2 – inputs other than quoted prices included within Level 1 that are observable for the asset or liability, either directly or indirectly;
- Level 3 – unobservable inputs for the asset or liability.

3.3 Non-current assets held for sale

Non-current assets classified as held for sale are classified as such and measured at the lower of carrying amount and fair value less costs to sell, if their value will be recovered through a sale transaction rather than through continuing use. This condition is regarded as met only when the sale is highly probable, the asset is available for immediate sale in its present condition and management is committed to the sale, which is expected to complete within one year.

Property, plant and equipment classified as held for sale are not depreciated.

No assets were classified as held for sale as at 31 March 2023 and 31 March 2022.

3.4 Investment properties

Investment properties are initially recognised at cost, including direct transaction costs. They are subsequently revalued annually in accordance with the fair value model, reflecting market conditions at the balance sheet date. Where a fair value cannot be obtained the cost model will be used in IAS 16. Any surplus or deficit arising from any change in fair value is recognised in the Comprehensive Income and Expenditure Statement in the period in which it arises.

Investment properties are not depreciated. They are de-recognised when disposed of, or when no future economic use is expected. The difference between net proceeds and carrying value is recognised in the Comprehensive Income and Expenditure Statement in the period of de-recognition.

3.5 Intangible assets

Expenditure on non-monetary assets that do not have physical substance but are controlled by TfGM as a result of past events (e.g. software development costs and software licences) are capitalised when it is expected that future economic benefits or service potential will flow from the intangible asset to TfGM.

Internally generated assets are capitalised where it is demonstrable that the project is technically feasible and is intended to be completed (with adequate resources being available) and TfGM will be able to generate future economic benefits or deliver service potential by being able to use or sell the asset. Expenditure is capitalised where it can be measured reliably as attributable to the asset and is restricted to that incurred during the development phase (research expenditure cannot be capitalised). Expenditure on the development of websites is not capitalised if the website is solely or primarily intended to promote or advertise TfGM's goods or services.

Intangible assets are measured initially at cost. Amounts are only revalued where the fair value of the assets held by TfGM can be determined by reference to an active market. In practice, no intangible asset held by TfGM meets this criterion, and they are therefore carried at amortised cost. The depreciable amount of an intangible asset is amortised over its useful life to operational costs in the Comprehensive Income and Expenditure Statement. An asset is tested for impairment whenever there is an indication that the asset might be impaired – any losses recognised are posted to the operating expenditure line in the Comprehensive Income and Expenditure Statement. Any gain or loss arising on the disposal or abandonment of an intangible asset is posted to the Other Operating Expenditure line in the Comprehensive Income and Expenditure Statement.

3.6 Capital and revenue grants and contributions

Capital and revenue grants receivable and contributions are recognised immediately in the Comprehensive Income and Expenditure Statement except where the grant or contribution has a condition that has not yet been met. These amounts are recognised in the Balance Sheet within capital and revenue grants received in advance until such time as the conditions are met whereupon they are transferred to the Comprehensive Income and Expenditure Statement.

With respect to capital grants or contributions, if the expenditure to be financed from the grant or contribution has been incurred at the balance sheet date, the grant or contribution is transferred from the Revenue Reserve to the Capital Adjustment Account via the Movement in Reserves Statement. If the expenditure has not been incurred at the balance sheet date, the grant or contribution is transferred to the Capital Grants Unapplied Account via the Movement in Reserves Statement.

With respect to revenue grants or contributions, if the expenditure has not been incurred at the balance sheet date, the grant or contribution is transferred to the Revenue Grants Unapplied Account via the Movement in Reserves Statement.

In the cases where a capital or revenue grant is received which is subject to a stipulation that it be returned to the transferor if a specified future event does not occur, a return obligation does not arise until such time as it is expected that the stipulation will be breached; and a liability is not recognised until the recognition criteria have been satisfied.

3.7 Inventories

Inventories are carried at the lower of cost (including costs incurred in bringing the inventory to its present location, such as freight) and net realisable value, determined on a first in first out basis.

3.8 Financial Assets

Financial assets have the following categories: financial assets measured at fair value through profit or loss, financial assets measured at amortised cost and financial assets measured at fair value through other comprehensive income, in accordance with IFRS 9. Assets held at amortised cost are initially recognised at cost and remain at cost whereas assets held at fair value are revalued in accordance with fair value measurement set out in paragraph 3.2. TfGM's financial assets include the long term investments, cash, short-term deposits, trade and other receivables.

Subsequent measurement depends on their classification as follows:

Long term investments: investments are reviewed to determine which category they should be classified as. The current investments have been deemed to fall within the fair value through other comprehensive income category.

Fair value through other comprehensive income assets are initially measured and carried at fair value in line with fair value measurement set out in note 3.2. Assets are held in this category when the amounts received relating to them are solely principal and interest but they are held to collect cash and sell the assets. There are two key criteria for election as a fair value through other comprehensive income asset, these are the asset must be an equity instrument and the asset must not be held for trading.

Comprehensive Income and Expenditure Statement treatment: movements in amortised cost debited/credited to the Surplus or Deficit on the Provision of Services, but movements in fair value debited/credited to Other Comprehensive Income and Expenditure:

- Interest credited to Surplus or Deficit on the Provision of Services using the effective interest rate method.
- Movements in impairment loss allowances debited/ credited to Surplus or Deficit on the Provision of Services (with a compensating credit/debit not against the carrying amount of the asset but to Other Comprehensive Income and Expenditure to offset movements against gains/losses on fair value).
- Changes in fair value posted to Other Comprehensive Income and Expenditure.
- Cumulative gains/losses on fair value are posted to the Surplus or Deficit on the Provision of Services on derecognition.

Cash and cash equivalents: funds placed with banks and other financial institutions by GMCA with a maturity of three months or less. For the purpose of the cash flow statement, cash and cash equivalents are as defined above, net of any outstanding bank overdrafts.

Loans and deposits: non-derivative financial assets with fixed or determinable payments not quoted in an active market. Such assets are carried at amortised cost using the effective interest rate method. Any gains and losses are recognised in the Comprehensive Income and Expenditure Statement when the assets are amortised, de-recognised or impaired.

Trade and other receivables: recognised and carried at invoice or contract value less an allowance for any amounts which may not be collectable. Should an amount become uncollectable, it is written off to the Comprehensive Income and Expenditure Statement in the period in which the write off is recognised.

Finance leases: refer to notes 3.15 and 3.16.

3.9 Financial Liabilities

Financial liabilities are classified at recognition as financial liabilities measured at fair value through profit or loss or financial liabilities at amortised costs in accordance with IFRS 9. TfGM has not designated any financial liabilities or assets as at fair value through the Comprehensive Income and Expenditure Statement. TfGM's financial liabilities include bank overdraft, trade creditors, loans and other payables.

Subsequent measurement depends on their classification as follows:

Loans and borrowings: non-derivative financial liabilities with fixed or determinable payments not quoted in an active market. Such interest-bearing liabilities are carried at amortised cost using the effective interest rate method. Any gains and losses are recognised in the Comprehensive Income and Expenditure Statement when the liabilities are amortised, de-recognised or impaired.

Trade and other payables: recognised and carried at invoice or contract value. Should an amount become non-payable, it is written back to the income statement in the period in which it is recognised.

Finance leases: refer to notes 3.15 and 3.16.

3.10 Offsetting of Financial Instruments

Financial assets and liabilities are offset, and the net amount reported in the Balance Sheet, if, and only if, there is an enforceable legal right to offset, and there is an intention to settle on a net basis in order to realise the assets and discharge the liabilities simultaneously.

3.11 Impairment of non-financial assets

TfGM assesses each year whether there is an indication that an asset may be impaired. If any indication exists, or when annual impairment testing for an asset is required, TfGM estimates the asset's recoverable amount, which is the higher of its fair value less costs to sell, and its value in use. This is determined for an individual asset, unless it does not generate cash flows independently from other assets. Where the carrying amount of an asset exceeds its recoverable amount, the asset is impaired down to its recoverable amount.

In assessing value in use, the estimated future cash flows are discounted at a rate reflecting TfGM's current assessment of its average borrowing rates. In determining fair value less costs to sell, an appropriate valuation model is used. The calculations are reviewed where possible against other available indicators.

Impairment losses are recognised in the Comprehensive Income and Expenditure Statement in those expense categories consistent with the function of the asset, except for property previously re-valued where the revaluation was taken to reserves. In this case the impairment is also recognised in reserves up to the amount of any previous revaluation.

An assessment is also made each year as to whether there is any indication that previously recognised impairment losses may no longer exist; or may have decreased. If this is the case, TfGM estimates the asset's recoverable amount. A previously recognised impairment loss is reversed only if there has been a change in the assumptions used to determine the asset's recoverable amount since the last impairment loss was recognised. The reversal is limited such that the carrying amount of the asset does not exceed its recoverable amount, nor exceed the carrying amount that would have been determined, net of depreciation, had no impairment loss been previously recognised. Such reversal is recognised in the Comprehensive Income and Expenditure Statement unless the asset is carried at re-valued amount, in which case the reversal is treated as a revaluation increase.

3.12 Provisions, Contingent liabilities and Contingent assets

Provisions

Provisions are made where an event has taken place that gives TfGM a legal or constructive obligation that "probably" requires settlement by a transfer of economic benefits or service potential, and, where a reliable estimate can be made of the amount of the obligation.

Provisions are charged either as an expense to the appropriate service line in the Comprehensive Income and Expenditure Statement or within project costs included within property, plant and equipment in the year that TfGM becomes aware of the obligation, and are measured at the best estimate at the balance sheet date of the expenditure required to settle the obligation, taking into account relevant risks and uncertainties.

When payments are eventually made, they are charged to the provision carried in the Balance Sheet. Estimated settlements are reviewed at the end of each financial year. Where it becomes less than probable that a transfer of economic benefits will be required (or a lower settlement than anticipated is made), the amount of the provision no longer required is reversed and credited back to the relevant service or project cost.

Where some or all of the payment required to settle a provision is expected to be recovered from another party (e.g. from an insurance claim), this is only recognised as income in the relevant service line if it is virtually certain that reimbursement will be received if TfGM settles the obligation.

Contingent liabilities

A contingent liability arises where an event has taken place that gives TfGM a possible obligation whose existence will only be confirmed by the occurrence or otherwise of uncertain future events not wholly within the control of TfGM.

Contingent liabilities also arise in circumstances where a provision would otherwise be made but either it is not probable that an outflow of resources will be required or the amount of the obligation cannot be measured reliably.

Contingent liabilities are not recognised in the Balance Sheet but are instead disclosed in a note to the accounts.

Contingent assets

A contingent asset arises where an event has taken place that gives TfGM a possible asset whose existence will only be confirmed by the occurrence or otherwise of uncertain future events not wholly with the control of TfGM.

Contingent assets are not recognised in the Balance Sheet but are instead disclosed in a note to the accounts where it is possible that there will be an inflow of economic benefits or service potential.

3.13 Passenger Transport Facilities

As part of its statutory duties, TfGM is responsible for meeting the costs of upgrading public passenger transport facilities in the Greater Manchester area, including railway and highways infrastructure. The expenditure incurred is offset by equivalent grants received from GMCA and other parties, which for the year ended 31 March 2023 amounted to £11.9 million (2022: £5.1 million).

Once completed, ownership of these assets vests in Network Rail, rail operating companies, Highways England, GMCA or the Local Authority as appropriate.

Both the costs and the grant income are recognised within the Comprehensive Income and Expenditure Statement.

3.14 Turnover

Turnover, which all arises within the United Kingdom and is stated net of value added tax, represents income arising from Metrolink and bus fare revenues, services provided, rental income, and advertising revenues, including estimates in respect of services provided but not invoiced at the year end.

3.15 Lease Income

Amounts receivable under finance leases are stated net of interest allocated to future periods. Interest is allocated to accounting periods to produce a constant periodic rate of return on the remaining net investment.

Rentals receivable under operating leases, and secondary rentals received and retained by TfGM under finance leases, are credited to income as they arise. Any premia or incentives within the lease are recognised as income on an equal basis over the term of the lease.

3.16 Lease expenditure

Assets held under finance leases where TfGM retains substantially all the risks and benefits of ownership are capitalised in the balance sheet at the lower of the fair value of the asset and the net present value of the minimum lease payments; the assets are then depreciated over their useful economic lives.

The lease obligations are recognised as a financial liability. The interest element of the rental obligations is charged to the Comprehensive Income and Expenditure Statement over the period of the lease and represents a constant proportion of the balance of capital repayments outstanding.

Rentals paid under operating leases are charged to expenditure on a straight line basis over the term of the lease, recognising on an equal basis the impact of any premia or incentives.

3.17 Pensions

Employees of TfGM are members of the Local Government Pension Scheme administered by Greater Manchester Pension Fund (GMPF).

The scheme provides defined benefits to members (retirement lump sums and pensions), earned as employees worked for TfGM.

The Scheme is accounted for as a defined benefits scheme:

- The liabilities of the GMPF attributable to TfGM are included in the Balance Sheet on an actuarial basis using the projected unit method – i.e. an assessment of the future payments that will be made in relation to retirement benefits earned to date by employees, based on assumptions about mortality rates, employee turnover rates, etc, and projections of projected earnings for current employees.
- Liabilities are discounted to their value at current prices, using a discount rate of 4.75% (2022: 2.7%).
- The assets of GMPF attributable to TfGM are included in the Balance Sheet at their fair value based on the bid values of the assets.
- The change in the net pensions liability is analysed into seven components:
 - Current service cost – the increase in liabilities as a result of years of service earned this year are allocated in the Comprehensive Income and Expenditure Statement to the services for which the employees worked;
 - Past service cost – the increase in liabilities arising from current year decisions whose effect relates to years of service earned in earlier years – is debited to the Surplus or Deficit on the Provision of Services in the Comprehensive Income and Expenditure Statement;
 - Interest cost – the expected increase in the present value of liabilities during the year as they move one year closer to being paid – is debited to the Financing and Investment Income and Expenditure line in the Comprehensive Income and Expenditure Statement;
 - Expected return on assets – the annual investment return on the fund assets attributable to TfGM, based on an average of the expected long-term return - is credited to the Financing and Investment Income and Expenditure line in the Comprehensive Income and Expenditure Statement;
 - Gains or losses on settlements and curtailments – the result of actions to relieve TfGM of liabilities or events that reduce the expected future service or accrual of benefits of employees – are debited or credited to the Surplus or Deficit on the Provision of Services in the Comprehensive Income and Expenditure Statement;
 - Remeasurement of the net defined benefit liability – changes in the net pensions liability that arise because events have not coincided with assumptions made at the last actuarial valuation or because the actuaries have updated their assumptions – are credited or debited to the Pensions Reserve; and
 - Contributions paid to the GMPF – cash paid as employer’s contributions to the pension fund in settlement of liabilities; are not accounted for as an expense.

In relation to retirement benefits, statutory provisions require the Revenue Reserve balance to be charged with the amount payable by TfGM to the pension fund or directly to pensioners in the year, not the amount calculated according to the relevant accounting standards. In the Movement in Reserves Statement, this means that there are appropriations to and from the Pensions Reserve to remove the notional debits and credits for retirement benefits and replace them with debits for the cash paid to the pension fund and pensioners and any such amounts payable but unpaid at the year-end. The balance on the Pensions Reserve therefore reflects the cumulative impact on the Revenue Reserve of being required to account for retirement benefits on the basis of cash flows rather than as benefits earned by employees.

3.18 Accrual of income and expenditure

Activity is accounted for in the year that it takes place, not simply when cash payments are made or received. In particular:

- Revenue from contracts with service recipients, whether for services or the provision of goods, is recognised when (or as) the goods or services are transferred to the service recipient in accordance with the performance obligations in the contract.
- Supplies are recorded as expenditure when they are consumed – where there is a gap between the date supplies are received and their consumption, they are carried as inventories on the Balance Sheet.

- Expenses in relation to services received (including services provided by employees) are recorded as expenditure when the services are received rather than when payments are made.
- Interest receivable on investments and payable on borrowings is accounted for respectively as income and expenditure on the basis of the effective interest rate for the relevant financial instrument rather than the cash flows fixed or determined by the contract.
- Where revenue and expenditure have been recognised but cash has not been received or paid, a debtor or creditor for the relevant amount is recorded in the Balance Sheet. Where debts may not be settled, the balance of debtors is written down and a charge made to revenue in financing and investment income and expenditure for the income that might not be collected.

3.19 Reserves

TfGM holds specific amounts as reserves for future policy purposes or to cover contingencies. Reserves held are shown in the Movement in Reserves Statement. When expenditure to be financed from a reserve is incurred, it is charged to the appropriate service in that year to score against the Surplus or Deficit on the Provision of Services in the Comprehensive Income and Expenditure Statement.

Certain reserves are kept to manage the accounting processes for non-current assets, capital grants, retirement and employee benefits and do not represent usable resources for TfGM. These reserves are explained in note 19.

3.20 Events after the balance sheet date

Events after the Balance Sheet date are those events, both favourable and unfavourable, that occur between the end of the reporting period and the date when the Statement of Accounts is authorised for issue. Two types of events can be identified:

- those that provide evidence of conditions that existed at the end of the reporting period – the Statement of Accounts is adjusted to reflect such events;
- those that are indicative of conditions that arose after the reporting period – the Statement of Accounts is not adjusted to reflect such events, but where a category of events would have a material effect, disclosure is made in the notes of the nature of the events and their estimated financial effect.

Events taking place after the date of authorisation for issue are not reflected in the Statement of Accounts.

3.21 Value Added Tax (VAT)

VAT payable is included as an expense only to the extent that it is not recoverable from Her Majesty's Revenue and Customs. VAT receivable is excluded from income.

3.22 Agency Services

Transactions are excluded from TfGM's financial statements for all agency relationships. As stipulated by the Code TfGM is acting as an agent in situations when TfGM do not have exposure to the significant risks and rewards in providing the goods or services. TfGM review all services provided to determine who has exposure to the significant risks and rewards and when this is not deemed to be TfGM the transactions have been excluded from the financial statements. There are three significant agency relationship; they are in relation to the payments of the Bus Services Operator Grant to bus operators on behalf of GMCA, the Coronavirus Bus Service Support Grant, and Clean Air. See note 20.

4 Significant accounting judgements, estimates and assumptions

The preparation of TfGM's accounts requires management to make judgments, estimates and assumptions that affect the reported amounts of revenues, expenses, assets and liabilities at the reporting date. However, uncertainty about these assumptions and estimates could result in outcomes that require a material adjustment to the carrying amount of the asset or liability in future periods.

The items in TfGM's Balance Sheet at 31 March 2023 for which there is a significant risk of material adjustment in the forthcoming financial year are as follows:

- Pension benefits: the cost of defined benefit pension plans is determined using an independent actuarial valuation, involving the use of assumptions about discount rates, returns on assets, future salary increases, mortality rates and future pension increases. Such assumptions are reviewed at each period end, and determined jointly between the pension fund management and the actuaries.
- Carrying value of property, plant and equipment: for assets held at historical cost the carrying value is the initial cost of the asset less accumulated depreciation. Depreciation is calculated using the expected useful life for each component of an asset. The useful life is a best estimate of the life of the asset and is provided by an expert in the relevant area. Each year end an annual review is performed to ensure the remaining useful life and carrying value of the asset are appropriate. For assets held at valuation, a full valuation is performed as a minimum every 5 years by an independent external valuer; an impairment review is undertaken by management for all other years. If the useful life is adjusted by one year, this would result in an estimated impact of £7.4 million (2021/22 £6.9 million).

5 Expenditure and Funding Analysis statement

2021/22			2022/23			
Net expenditure chargeable to the revenue reserve	Adjustments between the Funding and Accounting Basis	Net expenditure in the Comprehensive Income and Expenditure Statement		Net expenditure chargeable to the revenue reserve	Adjustments between the Funding and Accounting Basis	Net expenditure in the Comprehensive Income and Expenditure Statement
£'000	£'000	£'000		£'000	£'000	£'000
(57,698)	-	(57,698)	Concessionary fare scheme	(61,302)	-	(61,302)
(28,252)	-	(28,252)	Supported bus services	(37,180)	-	(37,180)
(634)	(426)	(1,060)	Metrolink	(11,316)	(405)	(11,721)
(3,521)	-	(3,521)	Accessible transport	(3,686)	-	(3,686)
791	-	791	Management of traffic signals	906	-	906
1,365	(248)	1,117	Road safety activities	1,610	(238)	1,372
(60,646)	(95,845)	(156,490)	Operational and other costs	(73,097)	(96,794)	(169,891)
(148,595)	(96,519)	(245,113)	Net cost of Services	(184,065)	(97,437)	(281,502)
161,244	61,061	222,305	Other income and expenditure	185,118	87,183	272,301
12,649	(35,458)	(22,808)	Surplus or Deficit	1,053	(10,254)	(9,201)
37,516			Opening revenue reserves balance	48,847		
12,649			Less / Plus surplus or (deficit) on revenue balance in Year	1,053		
<u>(1,318)</u>			Transfer between reserves	<u>(2,334)</u>		
48,847			Closing revenue reserve at 31 March	47,566		

(a) Note to the expenditure and funding analysis

Adjustments between Funding and Accounting Basis 2021/22			
Adjustments between the Funding and Accounting Basis	Adjustments for capital purposes (Note 1)	Net change for the Pensions adjustment (Note 2)	Total Adjustments
	£'000	£'000	£'000
Metrolink	-	(426)	(426)
Road safety activities	-	(248)	(248)
Operational and other costs	(81,526)	(14,319)	(95,845)
Net cost of Services	(81,526)	(14,993)	(96,519)
Other income and expenditure	63,955	(2,894)	61,061
Difference between revenue reserve surplus and Comprehensive Income and Expenditure Statement surplus on the Provision of Services	(17,571)	(17,887)	(35,458)

Adjustments between Funding and Accounting Basis 2022/23			
Adjustments between the Funding and Accounting Basis	Adjustments for capital purposes (Note 1)	Net change for the Pensions adjustment (Note 2)	Total Adjustments
Metrolink	-	(405)	(405)
Road safety activities	-	(238)	(238)
Operational and other costs	(83,160)	(13,634)	(96,794)
Net cost of Services	(83,160)	(14,277)	(97,437)
Other income and expenditure	90,200	(3,017)	87,183
Difference between revenue reserve surplus and Comprehensive Income and Expenditure Statement surplus on the Provision of Services	7,040	(17,294)	(10,254)

Adjustments for capital purposes

1) Adjustments for capital purposes – this column adds in Taxation and non-specific grant income and expenditure – capital grants are adjusted for income not chargeable under generally accepted accounting practices. The Taxation and Non Specific Grant Income and Expenditure line is credited with capital grants receivable in the year without conditions or for which conditions were satisfied in the year. For internal reporting purposes the capital grants received are recognised in line with the expenditure i.e. depreciation charge. This also includes the adjustment for any capital grants remaining on disposal of assets.

Net Change for the Pensions Adjustments

2) Net change for the removal of pension contributions and the addition of IAS 19 Employee Benefits pension related expenditure and income:

- For services this represents the removal of the employer pension contributions made by the authority as allowed by statute and the replacement with current service costs and past service costs.
- For Financing and investment income and expenditure – the net interest on the defined benefit liability is charged to the CIES.

(b) Note to the expenditure and funding analysis

	2022/23	2021/22
	£'000	£'000
Expenditure/Income		
Expenditure		
Employee benefits expenses*	63,497	59,050
Transport expenditure		
Concessionary fare schemes	61,302	57,698
Capped Fares scheme	14,908	-
Supported bus services	48,046	37,314
Metrolink	93,231	80,268
Accessible transport	3,686	3,521
Management of traffic signals	7,446	6,795
Road safety activities	7,804	6,358
Provision of passenger transport facilities	11,919	5,112
Other Transport Expenditure	48,808	36,023
Depreciation, amortisation, impairment	85,326	84,002
Financing costs:		
Interest payable and similar charges	2,476	3,660
Adjustment for the equalisation of interest on a loan	(31)	(31)
Pensions interest cost and expected return on pensions assets	3,016	2,894
Loss on the disposal of assets	1,560	1,369
Total expenditure	452,994	384,033
	2022/23	2021/22
	£'000	£'000
Income		
Fees, charges and other service income		
Transport income		
Supported bus services	10,866	9,062
Capped Fares scheme	14,908	-
Metrolink	83,788	81,359
Management of traffic signals	8,352	7,586
Road safety activities	10,465	8,615
Provision of passenger transport facilities	11,919	5,112
Interest and investment income	450	403
Local government revenue grants and contributions	187,232	164,517
Local government capital grants and contributions	91,748	65,243
Bus station facility charges	2,707	2,758
Rail grant	1,900	1,900
Rents and service charges	1,012	888
Advertising revenue	441	695
Other highways income	4,532	4,330
Passenger information services, Travelshop, bus station ancillary charges, rail franchise, operators and local authorities' recoveries.	13,473	8,757
Total income	443,793	361,225
Surplus on the Provision of Services	(9,201)	(22,808)

*Note this includes the IAS19 employer cost adjustments and removes staff time capitalised.

(c) Revenue from contracts with service recipients

Revenue generated from contracts with service recipients is £26.500 million for 2022/23 (2021/22: £23.207million). The main source of revenue generated from service with recipients relates to Greater Manchester Urban Traffic Controls works undertaken during the year.

6 Passenger Transport Facilities

As part of its statutory duties, TfGM is responsible for meeting the costs of upgrading public passenger transport facilities in the Greater Manchester area, including certain railway and highways infrastructure. The expenditure incurred is offset by equivalent grants or funding, which for the year ended 31 March 2023 amounted to £11.9 million (2022: £5.1 million). The ownership of these assets normally vests in either Network Rail; train operating companies; GMCA; or the appropriate Local Authority. In certain circumstances, title in these assets may ultimately revert to TfGM. Costs and grants are written off as incurred / received. The spend in the year has included works on the Stockport Interchange Mixed Use Scheme and costs under the Bee Network Scheme.

7 Surplus on provision of services for the year

(a) The operating surplus for the year has been stated after the following payments made to the external auditors:

	2023	2022
	£000	£000
Fees payable to external auditors for:		
- audit services	46	46
- other services	-	-

(b) Statutory Directors' remunerations

The Executive Board is composed of the Chief Executive Officer and the other Executive Directors' and Non Executive Directors' who have been appointed by GMCA as members of the executive under s9(2) of the Transport Act 1968. The remuneration of the Executive Directors' has been disclosed as follows:

		Salary	Employer pension contributions	Total
		£	£	£
Chief Operating Officer	2022/23	196,820	40,151	236,971
RM Morris	2021/22	189,178	38,592	227,770
Managing Director and Finance & Corporate Services Director	2022/23	194,891	39,754	234,645
SG Warrener	2021/22	187,305	38,210	225,515
Contribution to the salary of the Chief Executive				
Chief Executive Officer*	2022/23	114,720	-	114,720
EJ Boylan	2021/22	118,721	-	118,721

* The costs for EJ Boylan relate to a recharge of 50% of the salary costs. The full salary costs are paid by GMCA and are disclosed in their financial statements.

(c) Staff costs (before IAS19 pension adjustments) and average number of employees

	2023	2022
	£000	£000
Wages and salaries*	47,516	41,873
Social security costs	5,450	4,518
Pension costs	9,577	8,286
	62,543	54,677
The average number of employees during the year	1,060	970

* This does not include staff time that has been subsequently capitalised or recharged to specific capital projects.

The number of employees receiving more than £50,000 remuneration for the year (including severance payments but excluding employer's pension contributions) were as follows:

Remuneration range	2023	2022
	Number	Number
£50,000 to £54,999	51	46
£55,000 to £59,999	63	75
£60,000 to £64,999	49	19
£65,000 to £69,999	31	28
£70,000 to £74,999	30	29
£75,000 to £79,999	36	14
£80,000 to £84,999	14	5
£85,000 to £89,999	6	23
£90,000 to £94,999	23	3
£95,000 to £99,999	6	4
£100,000 to £104,999	5	3
£105,000 to £109,999	2	-
£110,000 to £114,999	2	2
£115,000 to £119,999	-	2
£120,000 to £124,999	2	-
£125,000 to £129,999	-	-
£135,000 to £139,999	-	-
£140,000 to £145,999	1	1
£150,000 to £154,999	-	-

Note that the numbers above do not include the Directors salaries. See note 7b) above for the Directors remuneration.

(d) Staff exit packages

Details of the numbers of exit packages, with total cost per band and total cost of redundancies and other departures, are set out in the table below.

Exit package cost band	Number of voluntary redundancies		Number of other departures agreed		Total number of exit packages by cost band		Total cost of exit packages in each band	
	2023	2022	2023	2022	2023	2022	2023 £000	2022 £000
£0 - £20,000	10	3	1	3	11	6	133	44
£20,001 - £40,000	11	3	-	-	11	3	346	73
£40,001 - £60,000	9	2	-	1	9	3	433	134
£60,001-£80,000	6	-	-	-	6	-	453	-
£80,001-£100,000	5	-	-	1	5	1	424	95
£100,001-£150,000	9	-	-	-	9	-	1,037	-
£150,001-£200,000	2	-	-	-	2	-	341	-
£200,001-£250,000	-	-	-	-	-	-	-	-
£250,001-£300,000	1	-	-	-	1	-	253	-
	53	8	1	5	54	13	3,420	346

The increase in exit packages is due to the voluntary severance scheme that was launched in 2022/23, as a result of the requirement to make on-going budgetary savings.

8 Financing and Investment Income and Expenditure

	2023 £000	2022 £000
Financing Costs		
Interest payable and similar charges	2,476	3,660
Adjustment on the equalisation of interest on a loan	(31)	(31)
Pensions interest cost and expected return on pensions assets	3,016	2,894
	5,461	6,523
Investment Income		
Received from Piccadilly Triangle Developments LLP – distribution of part of partnership profits	449	403
Interest income	1	-
	450	403

9 Taxation and non-specific grant income

	2023	2022
	£000	£000
Revenue Grant income		
GMCA – Levy	130,903	122,286
GMCA – Other	55,764	42,068
Other	457	163
Total Revenue Grants	187,124	164,517
Capital grant income		
GMCA capital grants*	91,327	61,909
Income in advance	(316)	237
Other	737	3,097
Total Capital Grants	91,748	65,243
Total grant income	278,872	229,760

*Note the capital grants received from GMCA fund a number of capital schemes. In 2023, these included additional light rail vehicles and associated infrastructure, zero emission buses and associated infrastructure, the Stockport Interchange / Mixed Use Scheme, the Metrolink Renewals and Enhancement Programme; and the Clean Air Plan which is funded via grant to GMCA from JAQU.

10 Property, Plant and Equipment

a) Capitalised assets available for use and assets under construction

Property, plant and equipment is reported as either capitalised assets available for use or as assets under construction. An analysis of the movements within the gross and depreciated or impaired book value of property, plant and equipment by key category is contained in the tables below:

	Total £000	Infra- structure £000	Land & Building £000	Plant & Equipment £000	Vehicles £000	Surplus assets £000	Assets Under Construction £000
Cost or valuation:							
At 31 March 2021	2,684,878	2,541,112	12,900	33,890	23,233	755	72,988
Expenditure during the year	58,621						58,621
Transfers from assets under Construction	-	58,859	-	2,213	834	512	(62,418)
Restatement of Assets	1,480	-	1,480	-	-	-	-
Disposals	(5,964)	(4,667)	-	(324)	(973)	-	-
At 31 March 2022	2,739,015	2,595,304	14,380	35,779	23,094	1,267	69,191
Expenditure during the year	83,428						83,428
Transfers from assets under Construction	-	50,320	-	1,843	5,001	-	(57,164)
Restatement of Assets	-	-	-	-	-	-	-
Disposals	(6,309)	(5,825)	-	(484)	-	-	-
At 31 March 2023	2,816,134	2,639,799	14,380	37,138	28,095	1,267	95,455
Depreciation and impairment:							
At 31 March 2021	662,369	621,169	1,758	25,518	13,924	-	-
Depreciation provided during the period	80,747	77,673	442	1,238	1,394	-	-
Reclassifications during the period	(2,200)	-	(2,200)	-	-	-	-
Disposals	(4,609)	(3,636)	-	(324)	(649)	-	-
At 31 March 2022	736,307	695,206	-	26,432	14,669	-	-
Depreciation provided during the period	82,577	79,545	-	1,460	1,572	-	-
Restatements during the period	-	-	-	-	-	-	-
Disposals	(4,729)	(4,245)	-	(484)	-	-	-
At 31 March 2023	814,155	770,506	-	27,408	16,241	-	-
Net Book Value:							
At 31 March 2023	2,001,979	1,869,293	14,380	9,730	11,854	1,267	95,455
At 31 March 2022	2,002,708	1,900,098	14,380	9,347	8,425	1,267	69,191

The net book value of land and buildings, within infrastructure and non-infrastructure categories comprised of the following:

	31 March 2023 £000	31 March 2022 £000
Freehold	371,229	401,998
Long Leasehold	91,687	96,351
Short Leasehold	1,231	1,421
	464,147	499,770

The transfer from assets under construction to infrastructure assets relates to a number of capital schemes that have been completed in the year. These include renewals work on Metrolink along with further new light rail vehicles coming into service, an expanded Metrolink park & ride facility at Radcliffe and enhancements to Queens Road Depot. There has also been a transfer relating to Cycle Hire infrastructure.

b) Assets held under finance leases

TfGM do not have any assets held under a finance lease.

c) Revaluation of property, plant and equipment

TfGM carries out a rolling programme that ensures that all Property, Plant and Equipment required to be measured at current value is revalued at least every five years. Valuations of land and buildings were carried out in accordance with the methodologies and bases for estimation set out in the professional standards of the Royal Institution of Chartered Surveyors. The current values for these properties have been based on existing use values and these were re-valued as at 31 March 2023.

A number of surplus properties were identified in 2015/16 and in accordance with the code were revalued at fair value. The fair value for the properties has been based on the market approach using current market conditions and recent sales prices and other relevant information for similar assets in the local area. Market conditions are such that similar properties are actively purchased and sold and the level of observable inputs are significant, leading to the properties being categorised at Level 2 in the fair value hierarchy.

In estimating the fair value of TfGM's surplus properties, the highest and best use of the properties is their current use. These were revalued in 2022/23, however due to the value of the properties and the minimal movements the changes in valuations have not been updated in the financial statements.

All valuations were carried out by Leslie Roberts & Co Limited, in accordance with the methodologies and bases for estimation set out in the professional standards of the Royal Institution of Chartered Surveyors. TfGM's valuation experts work closely with finance officers reporting directly to the chief financial officer on a regular basis regarding all valuation matters.

COVID-19 has impacted global financial markets and has led to an unprecedented set of circumstances on which the valuations have been based due to the restrictions imposed. Due to the unknown future impact that COVID-19 will have on the real estate market, the valuations will be kept under regular review. The latest valuation was undertaken on 31st March 2023 and there was no material impact on the accounts.

d) Assets under Construction

The value of assets under construction and the financial movements within this area are provided in Note 10a.

The main items of capital expenditure in the year related to amounts invested in the Metrolink Renewals and Enhancements Programme, the Stockport Interchange / Mixed Used Scheme, the additional 27 light rail vehicles and associated infrastructure, Zero Emissions Buses and associated infrastructure as part of the Clean Air Plan. Other items of capital expenditure related to upgrading the existing Metrolink network; and a number of other schemes including rail station improvements.

Financing of the expenditure comes by way of capital grants. Capital grants receivable in the year were receivable from the GMCA. None of the expenditure in the year was financed by finance leases.

At 31 March 2023 the amount of grants received in advance of payments made in respect of expenditure on capital projects and held within the Unapplied Grants Account was £0.57 million (£0.89 million at 31 March 2022).

The value of grants held against assets under construction and as deferred grants held against fixed assets are reported within the Capital Adjustment Account. The Capital Adjustment Account is included with the Unusable reserves within the balance sheet.

e) Net gain / (loss) on disposal of property, plant and equipment

The reported gain or loss on disposal of fixed assets is calculated with reference to both the carrying value of the assets themselves, and also the write-back of any unamortised grant outstanding. In relation to the gain / (loss) made during the year, this can be analysed as follows:

	2023	2022
	£000	£000
Net proceeds from sale of assets	20	4
Disposal costs written off	-	(19)
De-recognition of carrying values of assets	(1,580)	(1,354)
Gain / (loss) on disposal of property, plant and equipment per Comprehensive Income and Expenditure Statement	(1,560)	(1,369)
De-recognition of carrying values of associated grants	1,548	1,287
	(12)	(82)

11 Investment Assets

Investments are reviewed to determine which category they should be classified as. The current investments have been deemed to fall within the fair value through other comprehensive income category. Fair value through other comprehensive income assets are initially measured and carried at fair value in line with fair value measurement set out in note 3.2.

Fair value of equity instruments designated at fair value through other comprehensive income include the following:

	31 March	31 March
	2023	2022
	£000	£000
Non-current assets		
Non-listed securities		
Mayfield Partnership Limited Partnership	2,125	2,125
TfGM Peel Wharfside 1 LLP	2,000	2,000
TfGM Peel Wharfside 2 LLP	325	325
	4,450	4,450

Note there has been no income, expenses, gains or losses recognised in the provision of surpluses at 31 March 2023 and 31 March 2022 for any of the investments.

TfGM, Manchester City Council and London and Continental Railways Limited have formed the Mayfield Partnership Limited Partnership. The partnership is seeking to regenerate the former Mayfield Depot site near Piccadilly Station. Each party has pooled their existing land interests with a view to bringing forward significant development, employment and business opportunities. Each party has contributed their existing land interests as set out in a Land Pooling Agreement dated 22 January 2015 which also sets out the equity participation, this is currently 10% for TfGM. This Partnership has then entered into a Limited Partnership, the Mayfield Development Partnership LP with the private sector development partner U And I Group Plc. TfGM's interest is represented by a £2.1 million investment which includes TfGM's forecast future share in the investment return from the overall development.

In 2019/20 TfGM entered into an arrangement with Peel Group to form two joint venture vehicles; TfGM Peel Wharfside 1 LLP and TfGM Peel Wharfside 2 LLP. Each of TfGM and Peel Property (Partnerships) Limited (a company within the Peel group) hold membership interests in each of these limited liability partnerships. TfGM Peel Wharfside 1 LLP has been granted a long lease of the former 'Communis' site, and TfGM Peel Wharfside 2 LLP has been granted a long lease of the site known as 'Wharfside' (each site is adjacent to the Metrolink Trafford Park Line). The manner in which these sites will be dealt with is being progressed between TfGM and Peel, in accordance with the agreed joint venture arrangements

Fair values of financial assets

Some of the authority's financial assets are measured at fair value on a recurring basis and are described in the following table, including the valuation techniques used to measure them.

Recurring fair value measurements	Input level in fair value hierarchy	Valuation technique used to measure fair value	31 March 2023 £000	31 March 2022 £000
Non-current assets				
Non-listed securities				
Mayfield Partnership Limited Partnership	Level 3	Discounted cash flow	2,125	2,125
TfGM Peel Wharfside 1 LLP	Level 3	Discounted cash flow	2,000	2,000
TfGM Peel Wharfside 2 LLP	Level 3	Discounted cash flow	325	325
			4,450	4,450

Equity shareholding in Mayfield Partnership Limited Partnership

TfGM's share in Mayfield Partnership LLP – the shares in this company are not traded in an active market and fair value of £2.1 million has been based on valuation techniques that are not based on observable current market transactions or available market data. The valuation has been made based on an analysis of the Gross Development Value, cost inputs and timing assumptions has produced the estimated Market Value of the scheme.

12 Intangible Assets

TfGM accounts for certain items of software as intangible assets, to the extent that the software is not an integral part of a particular IT system and is therefore accounted for as part of the hardware item of property, plant and equipment. The intangible assets include both purchased licenses and internally generated software.

All software is given a finite useful life, based on assessments of the period that the software is expected to be of use to the authority. The useful lives assigned to the major software suites used by the authority range between 4 and 5 years.

The movement on intangible asset balances during the year is as follows:

	Total £000	Internally Generated Assets £000	Other Assets £000
Balance as at 31 March 2021	9,112	8,943	169
Additions:			
Internal development	6,591	3,247	3,344
Impairment losses recognised in the surplus/deficit on the provision of services	-	-	-
Amortisation for the period	(3,255)	(3,089)	(166)
Net carrying amount as at 31 March 2022	12,448	9,101	3,347
Comprising:			
Gross carrying amounts	25,813	21,637	4,176
Accumulated amortisation	(13,365)	(12,536)	(829)
At 31 March 2022	12,448	9,101	3,347

	Total	Internally Generated	Other
	£000	Assets	Assets
	£000	£000	£000
Balance as at 31 March 2022	12,448	9,101	3,347
Additions:			
Internal development	8,983	8,284	699
Impairment losses recognised in the surplus/deficit on the provision of services	-	-	-
Amortisation for the period	(2,749)	(2,749)	-
Net carrying amount as at 31 March 2023	18,682	14,636	4,046
Comprising:			
Gross carrying amounts	34,976	29,921	4,875
Accumulated amortisation	(16,114)	(15,285)	(829)
At 31 March 2023	18,682	14,636	4,046

The internally generated assets for 2022/23 include expenditure on the Clean Air Plan, Bus Franchising Programmes and Metrolink Communications Network.

13 Debtors

Short term debtors: amounts falling due within one year:

	31 March	31 March
	2023	2022
	£000	£000
Trade debtors	8,202	8,497
Amounts receivable from GMCA	61,028	62,536
Amounts due from group undertakings	102	204
Other debtors	5,372	13,117
Prepayments and accrued income	19,580	17,471
	94,284	101,825

Analysed between the following classes of debtors:

Central government bodies	2,757	8,871
Other local authorities	65,298	67,399
Other entities and individuals	26,229	25,555
	94,284	101,825

Trade debtors are non-interest bearing; are generally on terms of 30 days or less; and are shown net of any provision for impairment.

At 31 March 2023, trade debtors at a nominal value of £719,000 (2022: £719,000) were impaired. Movements in the provision for impairment of receivables were as follows:

	31 March 2023 £000	31 March 2022 £000
Opening provision	719	719
Charge for the year	328	425
Amounts written off	-	-
Unused amounts reversed	(328)	(425)
Closing provision	719	719

As at 31 March 2023, the ageing analysis of trade debtors net of the provision was as follows:

	Total £000	Neither overdue nor impaired £000	Past due but not impaired				
			1-30 days £000	31-60 days £000	61-90 days £000	91-120 days £000	over 120 days £000
31 March 2023	8,202	5,270	1,333	1,330	89	83	97
31 March 2022	8,497	3,733	3,941	186	431	49	157

14 Cash and cash equivalents

	31 March 2023 £000	31 March 2022 £000
Cash at bank and in hand	337	(2,832)
Short term deposits with GMCA	40,268	20,290
	40,605	17,458

Surplus cash funds available to TfGM were deposited with the GMCA depending on the immediate cash requirements of TfGM and GMCA. GMCA earns variable period rates of interest, none of which is receivable by TfGM. Such amounts are shown as 'Short term deposits with GMCA' above.

15 Current Liabilities

	31 March 2023 £000	31 March 2022 £000
Short term creditors		
Trade creditors	11,665	4,444
Taxation and social security	1,383	1,501
Accruals for expenditure recognised	64,313	48,426
Deferred income	5,498	4,724
Amounts due to GMCA	10,136	7,707
Other creditors	6,177	5,156
	99,172	71,958
Provisions (note 15)	2,235	2,804
Short term borrowings (note 16)	7,857	13,232
	109,264	87,994

Analysed between the following classes of creditors:

Central government bodies	1,744	1,859
Other local authorities	10,584	7,793
Other entities and individuals	96,936	78,342
	109,264	87,994

Trade creditors are non-interest bearing and are generally on terms of 30 days or less.

For terms and conditions pertaining to related parties, refer to note 21.

16 Provisions

Provisions are established to meet liabilities or losses which are likely or certain to be incurred, but the amounts or timings are uncertain. Provisions during the year may be analysed as follows:

	Total	Insurance Excess	Capital Works	Onerous Leases
	£000	£000	£000	£000
At 1 April 2022	9,890	334	9,360	196
Arising during the year	74	-	74	-
Utilised during the year	(1,704)	(159)	(1,543)	(2)
Unused amounts reversed	(83)	-	(83)	-
At 31 March 2023	8,177	175	7,808	194

Below is the aged expectation of the utilisation of the provisions.

	Total	Less than 12 months	Greater than 12 months
	£000	£000	£000
At 31 March 2022			
Insurance Excess	334	150	184
Capital Works	9,360	2,653	6,707
Onerous Lease	196	1	195
Other	-	-	-
	9,890	2,804	7,086
At 31 March 2023			
Insurance Excess	175	75	100
Capital Works	7,808	2,159	5,649
Onerous Lease	194	1	193
Other	-	-	-
	8,177	2,235	5,942

The amounts provided above at 31 March 2023 are described below:

- Insurance excesses: Excesses on Public Liability claims, arising from minor accidents to the public, and Employers Liability claims for work related illnesses that were potentially incurred prior to the transfer of TfGM's bus operations following the implementation of the Transport Act 1985.

- Capital Works: Costs for works arising for land acquired in the ordinary course of delivering TfGM's capital programme, where the amount of payment is uncertain.
- Onerous lease: Future lease costs of a property held on a long term lease by TfGM.
- Other provisions for contractual matters.

17 Financial Instruments

Set out below is a comparison by class of the carrying amounts of TfGM's financial assets and financial liabilities that are carried in the financial statements in line with the IFRS 9 accounting standard:

	Carrying Amount		Fair Value	
	31 March 2023 £000	31 March 2022 £000	31 March 2023 £000	31 March 2022 £000
Financial Assets:				
<i>Held at fair value through Other Comprehensive Income</i>				
Long term investments	4,450	4,450	4,450	4,450
<i>Held at amortised cost</i>				
Trade receivables	8,202	8,497	8,202	8,497
Amounts receivable from GMCA	61,028	62,536	61,028	62,536
Amounts due from group				
Undertakings	102	204	102	204
Other debtors	14,266	17,030	14,266	17,030
Cash and cash equivalents	40,605	17,457	40,605	17,457
Financial Liabilities:				
<i>Held at amortised cost</i>				
Trade creditors	(92,291)	(65,733)	(92,291)	(65,733)
Loans and receivables: Interest bearing loans and borrowings:				
Fixed rate borrowings - due within one year				
Accrued Interest	(860)	(1,232)	(860)	(1,232)
PWLB debt	(6,997)	-	(7,020)	-
Market debt	-	(12,000)	-	(12,008)
Fixed rate borrowings - due after one year				
PWLB debt	(10,325)	(17,322)	(10,465)	(18,601)
Market debt	(29,003)	(29,034)	(32,723)	(39,308)

Fair Values

Fair value in IFRS 13 is defined as the price that would be received to sell an asset or paid to transfer a liability in an orderly transaction between market participants at the measurement date.

The fair value evaluations in respect of loans and borrowings are explained below.

The fair values of the following classes of financial instruments approximate their carrying amounts due to the short term maturities of these instruments:

- Trade receivables;
- Trade payables and accruals for expenditure recognised;

- Cash and short term deposits;
- Receivables from, and deposits with, GMCA; and
- Amounts due from group undertakings

The valuation technique for long term investments is level 2 – significant observable inputs. There have been no changes in valuation technique during the financial year.

Long term receivables have been evaluated based on collectability risk.

Loans and Borrowings

- For non-PWLB loans payable, the fair value of the current and long term debt has been measured at £32.723 million (2021/22: £51.316 million) using premature repayment rates. These are the rates that would apply if the loan was to be repaid early and is deemed to be the principal market for the current debt. A supplementary measure of the fair value using current market rates is £30.105 million (2021/22: £48.055 million).
- The fair value of Public Works Loan Board (PWLB) loans of £17.485 million (2021/22: £18.601 million) measures the economic effect of the terms agreed with the PWLB based on premature repayment rates. This is deemed to be the principal market for the PWLB loan debt. The difference between the carrying amount and the fair value measures the reduced interest that the authority will pay over the remaining terms of the loans under the agreements with the PWLB, against what would be paid if the loans were at premature repayment rates.
- However, TfGM has a continuing ability to borrow at concessionary rates from the PWLB via the GMCA rather than from the markets. A supplementary measure of the additional interest that TfGM will pay as a result of its PWLB commitments for fixed rate loans is to compare the terms of these loans with the new borrowing rates available from the PWLB. If a value is calculated on this basis, the carrying amount of £17.322 million would be valued at £17.349 million (2021/22: £18.286 million). But, if the authority were to seek to avoid the projected loss by repaying the loans to the PWLB, the PWLB would raise a penalty charge for early redemption in addition to charging a premium for the additional interest that will not now be paid. The exit price for the PWLB loans would be £0.164 million (2021/22: £0.530 million).
- The valuation techniques used for PWLB and non PWLB debt are at level 2 – significant observable inputs. There have been no changes in valuation technique during the financial year.
- The purpose of the fair value disclosure is primarily to provide a comparison with the carrying value, which includes accrued interest as at the balance sheet date. TfGM has therefore included accrued interest in the fair value calculation.
- The discount rates used for the evaluation were obtained by GMCA from Link Asset Services (formally Capita). Link Asset Group is a leading and independent provider of capital financing, treasury advisory and strategic advisory consulting services to the public sector.
- Assumptions used, which do not have a material effect on the fair value evaluation are: interest is calculated using a 365 day basis; interest is paid on the maturity date; no adjustment is made to the interest value and date where a relevant date occurs on a non-working day.
- The repayment profile of loans and borrowings is taken into account during the TfGM's preparation and review of cash flow forecasts which are carried out on a regular basis.
- Public Works Loan Board loans were taken out to assist with the completion of Metrolink phase 2. The loans were taken out from 1997 to 2000 for a period of approximately 25 years and are repayable in full during 2023 and 2024. They are secured by Statute on all revenues.
- DePfa ACS bank loans were taken out in 2002 for 15 and 20 years. The loans taken out for 15 years have been fully repaid, whilst the loans taken out for 20 years were fully repaid in 2022. They were secured by Statute on all revenues.
- Dexia Credit loans were taken out in 2004 for 28-31 years and are repayable in full by 2032-2035 and are secured by Statute on all revenues

	Effective Interest Rate %	Maturity	2023 £000	2022 £000
Current:				
Accrued interest on all loans			860	1,232
Public Works Loan Board re Metrolink phase 2 - a	6.63%	May 2023	6,997	-
DePfa ACS Bank - c	6.42%	Apr 2022	-	12,000
			<u>7,857</u>	<u>13,232</u>

	Effective Interest Rate %	Maturity	2023 £000	2022 £000
Non-current:				
Public Works Loan Board re Metrolink phase 2 - a	6.63%	May 2023	-	6,997
Public Works Loan Board re Metrolink phase 2 - b	4.75%	May 2024	1,208	1,208
Public Works Loan Board re Metrolink phase 2 - c	4.75%	May 2024	6,237	6,237
Public Works Loan Board re Metrolink phase 2 - d	5.00%	Nov 2024	2,880	2,880
Dexia Credit Local - London Branch - a	4.75%	May 2032	7,000	7,000
Dexia Credit Local - London Branch - b	4.80%	May 2033	6,500	6,500
Dexia Credit Local - London Branch - c	4.80%	May 2034	7,000	7,000
Dexia Credit Local - London Branch - d	5.95%	May 2035	8,000	8,000
Accrued interest for stepped LOBO loan - Dexia d	5.95%	2013-35	503	534
			<u>39,328</u>	<u>46,356</u>
Total Loans and borrowings			<u>47,185</u>	<u>59,588</u>

Instalments are payable as follows:

Within 1 year or repayable on demand	7,857	13,232
Within 1 to 2 years	10,325	6,997
Within 2 to 5 years	-	10,325
Within 5 to 10 years	7,000	-
Longer than 10 years	22,003	29,034
	<u>47,185</u>	<u>59,588</u>

Risk Factors

TfGM carries out credit assessments of all new customers before contracting with them.

A prudent view is taken in respect of impairment of trade debtors as referred to in note 13.

TfGM bears no interest rate risk in relation to loans and borrowings, as all existing loans are at a fixed rate. Where required, short term funding for working capital is provided by GMCA at zero interest cost to TfGM.

Currency risk is not a significant factor for TfGM, as it ensures that substantially all financial assets and liabilities are contracted for in sterling. The value of contracts denominated in Euros is not material.

Equity price risk is not a factor for TfGM since it holds no tradable investments.

Risks are managed in accordance with the Annual Governance Statement. Management of TfGM's cash balances and funding requirements is undertaken by the daily assessment of available funds for short-term deposits; and the regular preparation of detailed treasury and cash flow forecasts which are reviewed by the Head of Finance and the Director of Finance and Corporate Services. Where necessary, mitigating actions are taken and agreement is sought from GMCA

officers if further funding is required to cover, for example, short term cash flow requirements arising from the timing difference between expenditure and grant monies being applied for and received.

There is an element of inherent credit risk in respect of short-term deposits placed by TfGM on behalf of GMCA. This risk is managed in accordance with the policies and procedures set out in the accounts of GMCA.

Hedging Instruments

TfGM holds no financial instruments that could be classified as hedging instruments.

18 Employee Benefits - Pension Costs

The substantial majority of the employees of TfGM participate in the Greater Manchester Pension Fund ('the Fund') administered by Tameside Metropolitan Borough Council. The scheme is a defined benefit scheme. The fund was valued using the projected unit method. The purpose of the valuation was to determine the financial position of the fund and to recommend the contribution rate to be paid by TfGM and the other participating employers.

The market value of the Fund's assets at 31 March 2022 amounted to £29,324 million. The funding level of the Fund as measured using the actuarial method of valuation was 104% as at 31 March 2022.

A full actuarial valuation was carried out at 31 March 2022 by a qualified independent actuary. The principal long term assumptions used by the actuary at that date were:

Rate of increase in salaries	3.7% per annum
Discount rate	3.6% per annum
Inflation assumption	2.9% per annum

TfGM's share of pension fund assets is rolled forward, by the actuary, from the latest formal valuation date. The roll forward amount is then adjusted for investment returns, the effective contributions paid into and estimated benefits paid from the fund by TfGM and its employees. As such this estimate may differ significantly from the actual assets held by the Pension Fund at 31 March.

The valuation has projected the valuation results of the full valuation undertaken as at 31 March 2022 forward to 31 March 2023 using approximate methods. The roll-forward allows for changes in financial assumptions, additional benefit accrual and estimated cash flows over the period.

TfGM recognises the cost of retirement benefits in the reported cost of services when they are earned by employees, rather than when the benefits are eventually paid as pensions. However, the charge TfGM are required to make against Usable Reserves is based on the cash payable in the year, so the real cost of post-employment/retirement benefits is reversed out of the Revenue Reserve via the Movement in Reserves Statement.

The following transactions have been made in the Comprehensive Income and Expenditure Statement and the Usable Reserves balance via the Movement in Reserves Statement during the year:

The pension costs of TfGM, representing the contributions payable to the Fund in respect of current employees, are charged to the revenue account in the year in which they are incurred.

In June 2011 the International Accounting Standards Board (IASB) issued a new version of IAS19. The key change is that the interest cost and expected return on assets components of profit are now combined into a net figure. In effect this means that the expected return has been replaced by a figure that would be applicable if the expected return on assets was equal to the discount rate.

This has involved removing some disclosure requirements but new requirements have been added. The information below complies with the new disclosure requirements.

	Local Government Pension Scheme	
	2023	2022
	£000	£000
Comprehensive Income and Expenditure statement		
<i>Cost of Services:</i>		
<i>Service cost comprising:</i>		
Current service cost	(23,100)	(22,395)
Past service costs	(204)	(244)
<i>Financing and Investment Income and Expenditure</i>		
Net interest (expense) / income	(3,016)	(2,894)
Total Post-employment Benefits charged to the Surplus on the provision of services	(26,320)	(25,533)
Remeasurement of the net defined (liability) / benefit comprising:		
Return on plan assets (excluding the amount included in the net interest expense)	(10,937)	11,342
Actuarial gains and losses arising on changes in demographic assumptions	9,197	3,100
Actuarial gains and losses arising on changes in financial assumptions	170,046	34,590
Other experience	(19,356)	(544)
Total Post-employment Benefits charged to the Comprehensive Income and Expenditure statement	148,950	48,488
Movement in reserves statement		
Reversal of net charges made to the Surplus on the provision of services for post-employment benefits in accordance with the Code	(131,657)	(30,601)
<i>Actual amount charged against the Usable Reserves Balance for pensions in the year:</i>		
Employer's contributions payable to scheme	9,027	7,646
Retirement benefits payable to pensioners	(16,404)	(17,774)

Pension assets and liabilities recognised in the Balance Sheet

The amount included in the Balance Sheet arising from TfGM's obligation in respect of its defined benefit plans is as follows:

	Local Government Pension Scheme	
	2023	2022
	£000	£000
Present value of the defined benefit obligation	(356,491)	(492,405)
Fair value of plan assets	381,494	385,751
Net asset / (liability) arising from the defined benefit obligation	25,003	(106,654)

Reconciliation of the Movements in the Fair Value of the Scheme

	Local Government Pension Scheme	
	2023	2022
	£000	£000
Opening value of the scheme assets	385,751	374,056
Effect of settlements		
Interest income	10,420	7,412
Remeasurement loss:		
The return on plan assets, excluding the amount included in the net interest expense	(10,937)	11,342
Contributions from employer	9,597	8,275
Contributions from employees into the scheme	3,637	3,070
Contributions in respect of unfunded benefits	(570)	(629)
Benefits paid	(16,404)	(17,775)
Closing value of scheme assets	381,494	385,751

Reconciliation of Present Value of the Scheme Liabilities

	Funded liabilities: Local Government Pension Scheme	
	2023	2022
	£000	£000
Opening balance at 1 April	492,405	511,311
Effect of settlements	-	-
Current service cost*	23,100	22,395
Interest cost	13,436	10,306
Contributions from scheme participants	3,637	3,070
Remeasurement gains / (losses)		
Actuarial gains/losses arising from changes in financial assumptions	(170,046)	(34,590)
Actuarial gains/losses arising from changes in demographic assumptions	(9,197)	(3,100)
Other experience	19,356	544
Past service cost	204	244
Benefits paid	(16,404)	(17,775)
Closing balance at 31 March**	356,491	492,405

*The current service cost includes an allowance for administration expenses of 0.3% (2022: 0.3%) of payroll.

** The closing liability includes £4.6 million of unfunded liabilities (2022: £5.2 million).

Local Government Pension Scheme assets comprised:

	Local Government Pension Scheme			
	Quoted prices in active markets	Quoted prices not in active markets	Quoted prices in active markets	Quoted prices not in active markets
	2023	2023	2022	2022
	£000	£000	£000	£000
Cash and cash equivalents	10,305	-	4,795	-
Equity instruments				
Consumer	14,274	-	13,102	-
Manufacturing	13,134	-	11,710	-
Energy and utilities	11,728	-	7,974	-
Financial institutions	20,269	-	17,605	-
Health and care	11,899	-	8,982	-
Information technology	16,768	-	8,998	-
Other	2,701	-	2,058	-
Sub-total equity	101,078	-	75,224	-
Bonds:				
<i>By sector</i>				
Corporate	129,612	-	194,155	-
Government	5,677	-	2,891	-
Other	7,072	-	4993	-
Sub-total bonds	142,361	-	202,039	-
Property:				
UK property	-	9,243	-	6,523
Private equity	-	17,771	-	11,896
Investment funds and unit trusts				
Equities	12,690	-	11,147	-
Bonds	21,082	-	17,375	-
Infrastructure	-	18,985	-	9,768
Other	25,290	32,994	33,820	19,104
Sub-total other investment funds	59,062	78,993	62,342	47,291
Derivatives:				
Other	-	-	(1,145)	-
Total assets	302,501	78,993	338,460	47,291

Basis for Estimating Assets and Liabilities

Liabilities have been assessed on an actuarial basis using the projected unit credit method, an estimate of the pensions that will be payable in future years dependent on assumptions about mortality rates, salary levels, rates of inflation and discount rates.

The Local Government Pension Scheme liability has been estimated by Hymans Robertson LLP, an independent firm of actuaries, estimates for the Greater Manchester Pension Fund being based on the latest full valuation of the scheme as at 1 April 2023. The significant assumptions used by the actuary have been:

	Local Government Pension Scheme	
	2023	2022
Mortality assumptions		
Longevity at 65 for current pensioners		
Men	19.0 years	20.3 years
Women	22.2 years	23.0 years
Longevity at 65 for future pensioners		
Men	22.3 years	21.6 years
Women	25.4 years	25.1 years
Rate of inflation		
Rate of increase in salaries	3.80%	3.95%
Rate of increase in pensions	3.00%	3.20%
Rate for discounting scheme liabilities	4.75%	2.70%

The return on the Employers' portion of the main fund assets for the year to 31 March 2023 is 2.2% (2022: 9.8%).

The estimation of the defined benefit obligations is sensitive to the actuarial assumptions set out in the table above. The sensitivity analyses below have been determined based on reasonably possible changes of the assumptions occurring at the end of the reporting period and assumes for each change that the assumption analysed changes while all the other assumptions remain constant. The assumptions in longevity, for example, assume that life expectancy increases or decreases for men and women. In practice, this is unlikely to occur, and changes in some of the assumptions may be interrelated. The estimations in the sensitivity analysis have followed the accounting policies for the scheme, i.e. on an actuarial basis using the projected unit credit method. The methods and types of assumptions used in preparing the sensitivity analysis below did not change from those used in the previous period.

	Impact on the Defined Benefit Obligation in the scheme			
	2022/23		2021/22	
	Approximate % increase to Employer	Approximate monetary amount £000	Approximate % increase to Employer	Approximate monetary amount £000
Rate of increase in salaries (increase or decrease by 0.5%)	1%	3,544	1%	4,828
Rate of increase in pensions (increase or decrease by 0.5%)	8%	27,084	9%	43,639
Rate for discounting scheme liabilities (increase or decrease by 0.5%)	9%	30,464	10%	49,341

The principal demographic assumption is the longevity assumption (i.e. member life expectancy). For sensitivity purposes, it is estimated that a one year increase in life expectancy would approximately increase the Employer's Defined Benefit Obligation by around 3-5% (2022: 3-5%). In practice the actual cost of a one year increase in life expectancy will depend on the structure of the revised assumption (i.e. if improvements to survival rates predominantly apply to younger or older ages).

Impact on the Authority's Cash Flows

The objectives of the scheme are to keep employers' contributions at as constant a rate as possible. TfGM has agreed a strategy with the scheme's actuary to achieve a funding level of 100%. Funding levels are monitored on an annual basis. The next triennial valuation is due to be completed as at 31 March 2023.

The scheme will need to take account of the national changes to the scheme under the Public Pensions Services Act 2013. Under the Act, the previous Local Government Pension Scheme in England and Wales and the other main existing public service schemes may not provide benefits in relation to service after 31 March 2014 (or service after 31 March 2015 for other main existing public service pension schemes in England and Wales). The Act provides for scheme regulations to be made within a common framework, to establish new career average revalued earnings schemes to pay pensions and other benefits to certain public servants.

TfGM anticipates paying £9,597,000 (2022/23: £8,129,000) in expected contributions to the scheme in 2023/24.

The following table shows the weighted average duration of the key assumptions for Greater Manchester Pension Fund liabilities:

Weighted Average Duration

	Short	Medium	Long
	31 March 2023	31 March 2023	31 March 2023
	% p.a.	% p.a.	% p.a.
Pension increase rate	3.00%	2.95%	2.95%
Retail Price Inflation (RPI)	3.30%	3.20%	3.15%
Discount rate	4.75%	4.75%	4.75%

	Short	Medium	Long
	31 March 2022	31 March 2022	31 March 2022
	% p.a.	% p.a.	% p.a.
Pension increase rate	3.30%	3.20%	3.15%
Retail Price Inflation (RPI)	3.85%	3.65%	3.55%
Discount rate	2.70%	2.70%	2.75%

19 Reserves

Usable Reserves

The usable reserves relate to Revenue Reserves and the Unapplied Capital and Revenue Grants and Contributions Accounts.

Unusable Reserves

Unusable reserves comprise Corporate Capital Reserve, Revaluation Reserve, Pension Reserve, Deregulation Reserve and Deferred Capital Receipts Account.

Corporate Capital Reserve

This primarily relates to the reserves of the entities from which the Greater Manchester Passenger Transport Executive (GMPTE) was formed. On 1 April 2011 GMPTE was renamed Transport for Greater Manchester (TfGM).

Revaluation Reserve

The Revaluation Reserve contains the gains made by TfGM arising from increases in the value of its Property, Plant and Equipment. The balance is reduced when assets with accumulated gains are:

- revalued downwards or impaired and the gains are lost;

- used in the provision of services and the gains are consumed through depreciation, or;
- disposed of and the gains are realised.

Pension Reserve

This relates to the net pension liability at 31 March 2023 in accordance with the actuary's report. Further details are shown in Note 18

Deregulation Reserve

The reserve represents the costs relating to the transfer of Greater Manchester Passenger Transport Executive's bus operations to Greater Manchester Buses Limited following the implementation of the Transport Act 1985. As required by the Act, and in accordance with the transfer scheme, which was approved by the Secretary of State for Transport, GMPTE transferred its bus operation activities and certain of its assets and liabilities to this new company. The Deregulation Reserve represents payments and losses incurred by GMPTE with respect to deregulation on 25 October 1986, which were not charged to profit and loss. On 1 April 2011, under a parliamentary order, Statutory Instrument 2011 number 908 The Greater Manchester Combined Authority Order 2011 article 9(2), GMPTE changed its name to TfGM.

Although there is no legal requirement to amortise this reserve, TfGM acknowledges the prudence of taking steps to reduce the levels of ongoing borrowing by which the deregulation was originally funded. To this end, TfGM commenced transferring the Deregulation Reserve to the Revenue Reserve from 2006 over a period of 30 years. The amount of capital being amortised will increase in future years as interest on the loans supporting the reserve reduces.

Capital Adjustment Account

The Capital Adjustment Account represents the value of capital grants received, which are not subject to conditions which may give rise to repayment thereof, less the amortisation of grants in line with the write off of equivalent depreciation on the value of assets that were supported by the grants.

Analysis of Movement in reserves:

2021/22	Usable Reserves				Unusable Reserves					Total Reserves	
	Revenue Reserves £000	Unapplied Revenue Grants and Contributions Account £000	Unapplied Capital Grants and Contributions Account £000	Total Usable Reserves £000	Corporate Capital £000	Revaluation Reserve £000	Pension Reserve £000	De-regulation Reserve £000	Capital Adjustment Account £000	Total Unusable Reserves £000	£000
At 31 March 2021	37,202	314	650	38,166	2,461	3,290	(137,255)	(41,261)	1,997,628	1,824,863	1,863,029
Surplus on provision of services	(22,808)	-	-	(22,808)	-	-	-	-	-	-	(22,808)
Other comprehensive income and expenditure	-	-	-	-	-	3,680	48,488	-	-	52,168	52,168
<i>Comprehensive income and expenditure</i>	(22,808)	-	-	(22,808)	-	3,680	48,488	-	-	52,168	29,360
<i>Adjustments between accounting basis and funding basis under regulations</i>											
Capital grants released (amortisation)	81,525	-	-	81,525	-	-	-	-	(81,525)	(81,525)	-
Capital grants released (disposals)	1,288	-	-	1,288	-	-	-	-	(1,288)	(1,288)	-
Capital grants applied	(65,243)	-	237	(65,006)	-	-	-	-	65,006	65,006	-
Revenue grants unapplied	-	-	-	-	-	-	-	-	-	-	-
Revenue grants (previously unapplied) released	-	-	-	-	-	-	-	-	-	-	-
Pension contributions by employer	(7,646)	-	-	(7,646)	-	-	7,646	-	-	7,646	-
Pension cost of service	22,639	-	-	22,639	-	-	(22,639)	-	-	(22,639)	-
Pension finance costs	2,894	-	-	2,894	-	-	(2,894)	-	-	(2,894)	-
	35,457	-	237	35,694	-	-	(17,887)	-	(17,807)	(35,694)	-
<i>Net increase / (decrease) before transfers to earmarked reserves</i>	12,649	-	237	12,886	-	3,680	30,601	-	(17,807)	16,474	29,360
Transfer from Revaluation Reserve	82	-	-	82	-	(82)	-	-	-	(82)	-
Transfer to Deregulation Reserve	(1,400)	-	-	(1,400)	-	-	-	1,400	-	1,400	-
<i>Increase / (decrease) in 2021/22</i>	11,331	-	237	11,568	-	3,598	30,601	1,400	(17,807)	17,792	29,360
At 31 March 2022	48,533	314	887	49,734	2,461	6,888	(106,654)	(39,861)	1,979,821	1,842,655	1,892,389
2023/23	Usable Reserves				Unusable Reserves					Total Reserves	
	Revenue Reserves £000	Unapplied Revenue Grants and Contributions Account £000	Unapplied Capital Grants and Contributions Account £000	Total Usable Reserves £000	Corporate Capital £000	Revaluation Reserve £000	Pension Reserve £000	De-regulation Reserve £000	Capital Adjustment Account £000	Total Unusable Reserves £000	£000
At 31 March 2022	48,533	314	887	49,734	2,461	6,888	(106,654)	(39,861)	1,979,821	1,842,655	1,892,389
Surplus on provision of services	(9,201)	-	-	(9,201)	-	-	-	-	-	-	(9,201)
Other comprehensive income and expenditure	-	-	-	-	-	-	148,950	-	-	148,950	148,950
<i>Comprehensive income and expenditure</i>	(9,201)	-	-	(9,201)	-	-	148,950	-	-	148,950	139,749
<i>Adjustments between accounting basis and funding basis under regulations</i>											
Capital grants released (amortisation)	83,161	-	-	83,161	-	-	-	-	(83,161)	(83,161)	-
Capital grants released (disposals)	1,548	-	-	1,548	-	-	-	-	(1,548)	(1,548)	-
Capital grants applied	(91,748)	-	(316)	(92,064)	-	-	-	-	92,064	92,064	-
Revenue grants unapplied	-	-	-	-	-	-	-	-	-	-	-
Revenue grants (previously unapplied) released	-	-	-	-	-	-	-	-	-	-	-
Pension contributions by employer	(9,027)	-	-	(9,027)	-	-	9,027	-	-	9,027	-
Pension cost of service	23,304	-	-	23,304	-	-	(23,304)	-	-	(23,304)	-
Pension finance costs	3,016	-	-	3,016	-	-	(3,016)	-	-	(3,016)	-
	10,254	-	(316)	9,938	-	-	(17,293)	-	7,355	(9,938)	-
<i>Net increase / (decrease) before transfers to earmarked reserves</i>	1,053	-	(316)	737	-	-	131,657	-	7,355	139,012	139,749
Transfer from Revaluation Reserve	264	-	-	264	-	(264)	-	-	-	(264)	-
Transfer to Deregulation Reserve	(2,598)	-	-	(2,598)	-	-	-	2,598	-	2,598	-
<i>Increase / (decrease) in 2022/23</i>	(1,281)	-	(316)	(1,597)	-	(264)	131,657	2,598	7,355	141,346	139,749
At 31 March 2023	47,252	314	571	48,137	2,461	6,624	25,003	(37,263)	1,987,176	1,984,001	2,032,138

20 Agency Services

Bus Services Operator Grant

The Bus Services Operator Grant (BSOG) is a grant paid to operators of eligible bus services and community transport organisations to help them recover some fuel costs. The amount each bus operator receives is based on their annual fuel consumption. In 2017/18 the funding was devolved to TfGM via GMCA to reimburse Greater Manchester bus operators in line with the national scheme.

During 2022/23 TfGM received additional funding from Government Departments to assist in the response to COVID impacts in the bus market.

Coronavirus Bus Service Support Grant

One of the additional funding streams provided by Government was the CBSSG (Coronavirus Bus Service Support Grant) – designed to replace lost revenue from lower patronage experienced during the pandemic. The CBSSG is designed to provide additional funding, to supplement continued payments from the public sector to bus operators (such as BSOG, concessionary travel reimbursement and tendered service contract payments) at pre-pandemic levels, as requested by Government. The grant was paid by Government to TfGM and then to operators by TfGM in line with the grant terms and conditions.

Clean Air

As Operating Body, TfGM is responsible for the implementation and management of the GM Clean Air Plan.

Although TfGM has discretion over how the service is managed, the outputs have been agreed with the 10 districts and the GMCA through the funding and Business Case mechanism, in addition to the Local Authorities authorising TfGM (via the delegation of executive functions of this kind by the 10 GM authorities governed by the Local Government Act 2000 and the Local Authorities (Arrangements for the Discharge of Functions) (England) Regulations 2012 (the 2012 Regulations)) to act in a coordinating and delivery role. As such, TfGM does not have any of the associated risks or rewards of the scheme.

21 Related party disclosures

a) Group companies

These financial statements include the financial statements of TfGM only. TfGM has the following interests in other companies but these have not been consolidated on the basis of materiality:

Name of Company	Equity Interest	Nature of business
Transport for Greater Manchester Limited	100%	Non-trading dormant company

TfGM and Manchester City Council are partners in Piccadilly Triangle Developments LLP (PTD LLP). TfGM has a 50% share of PTD LLP. This partnership is for the development of an area of land in Manchester, which commenced in May 2005. PTD LLP made a profit during the year of £902,000 (2022 £788,000).

TfGM, Manchester City Council and London and Continental Railways Limited have formed the Mayfield Partnership Limited Partnership. The partnership is seeking to regenerate the former Mayfield Depot site situated near Piccadilly Station. Each party has pooled their existing land interests with a view to bringing forward significant development, employment and business opportunities. Each party has contributed their existing land interests as set out in a Land Pooling Agreement dated 22 January 2015 which also sets out the equity participation, this is currently 10% for TfGM.

This Partnership has then entered into a Limited Partnership, the Mayfield Development Partnership LP with the private sector development partner U And I Group Plc.

In 2019/20 TfGM entered into an arrangement with Peel Group to form two joint venture vehicles; TfGM Peel Wharfside 1 LLP and TfGM Peel Wharfside 2 LLP. Each of TfGM and Peel Property (Partnerships) Limited (a company within the Peel group) hold membership interests in each of these limited liability partnerships. TfGM Peel Wharfside 1 LLP has been granted a long lease of the former 'Communis' site, and TfGM Peel Wharfside 2 LLP has been granted a long lease of the site known as 'Wharfside' (each site is adjacent to the Metrolink Trafford Park Line). The manner in which these sites will be dealt with is being progressed between TfGM and Peel, in accordance with the agreed joint venture arrangements.

In addition to the entities named above and PTD LLP, the directors regard GMCA as a related party.

b) Greater Manchester Combined Authority

Greater Manchester Combined Authority (GMCA) is the ultimate controlling party, by virtue of its ability to direct the financial and operating policies of TfGM. Additionally, the Chief Executive of GMCA is also the Chief Executive of TfGM and the Treasurer of GMCA is a Non Executive Director of TfGM. A summary of the transactions with GMCA has been provided below.

c) Greater Manchester Pension Fund

In line with the definition of a related party in the code of practice, any entity that is a post-employment benefit plan for the benefit of employees of the reporting entity is to be disclosed. Under this basis, Greater Manchester Pension Fund are a related party. For more details of associated transactions please see note 18.

d) General

A summary of the transactions in the year, and the balances outstanding at the end of the year, in respect of non-TfGM related parties, is contained within the following table:

	<u>Transactions during year</u>		<u>Balances at 31 March</u>	
	<u>Income from £000</u>	<u>Expenditure with £000</u>	<u>Receivable from £000</u>	<u>Payable to £000</u>
GMCA – grant / sales related 2023 (notes 12 and 14)	331,049	945	61,028	10,136
GMCA – grant / sales related 2022 (notes 12 and 14)	277,508	663	62,536	7,707
GMCA - short term deposits 2023	-	-	40,268	-
GMCA - short term deposits 2022	-	-	20,290	-
GMATL 2023	-	3,686	10	-
GMATL 2022	-	3,521	-	4
Piccadilly Triangle Developments 2023	351	-	102	-
Piccadilly Triangle Developments 2022	298	-	204	-

Further details of TfGM's relationship with, and the grants received from GMCA are contained within the Directors' report. Outstanding balances as at 31 March are unsecured, interest free and settlement occurs in cash. There have been no guarantees provided or received. No impairment of receivables has occurred during the year.

22 Commitments

	2023	2022
	£000	£000
Capital commitments at balance sheet date	85,056	127,449

The key commitments for 2022/23 are in relation to the following projects:

- Stockport Interchange / Mixed Use Scheme £43.9m (2021/22: £87.1m). This is in respect of the construction of a new Interchange inclusive a Park Podium, Link Bridge & Residential apartments; and
- Zero Emission Bus Scheme £25.8 million (2021/22: £nil). This project relates to the purchase of 100 zero emission buses.

Lease commitments

There were no amounts due under external finance leases and hire purchase contracts for TfGM. There are no annual commitments under non-cancellable operating leases other than for land and buildings, details of which are noted below.

	2023	2022
	£000	£000
Land and buildings		
Payments due within 1 year	376	387
Payments due between 2 and 5 years	754	804
Total payments due thereafter	7,466	7,675
	8,596	8,866

23 Contingent assets and liabilities

A contingent liability exists in relation to a claim received from a third party for damages. There are ongoing proceedings and liability is denied. Due to this, the final amount payable, if any, in relation to this claim is uncertain. The Directors consider that the provision of additional information could be prejudicial to its position in resolving this matter.

24 Post balance sheet events

As at [date], there are no Post Balance Sheet Events which require disclosure.