

GREATER MANCHESTER TRANSPORT STRATEGY 2040

Draft Delivery Plan 2020-2025: Executive Summary



Introduction by the Greater Manchester Mayor

Transport is the lifeblood of every town and city. It's how people get to work, get to school, meet their friends and ultimately live productive and fulfilled lives. It's also closely linked to some of the top issues facing our city-region, including congestion, air quality, our health and the attractiveness of our streets and town centres.

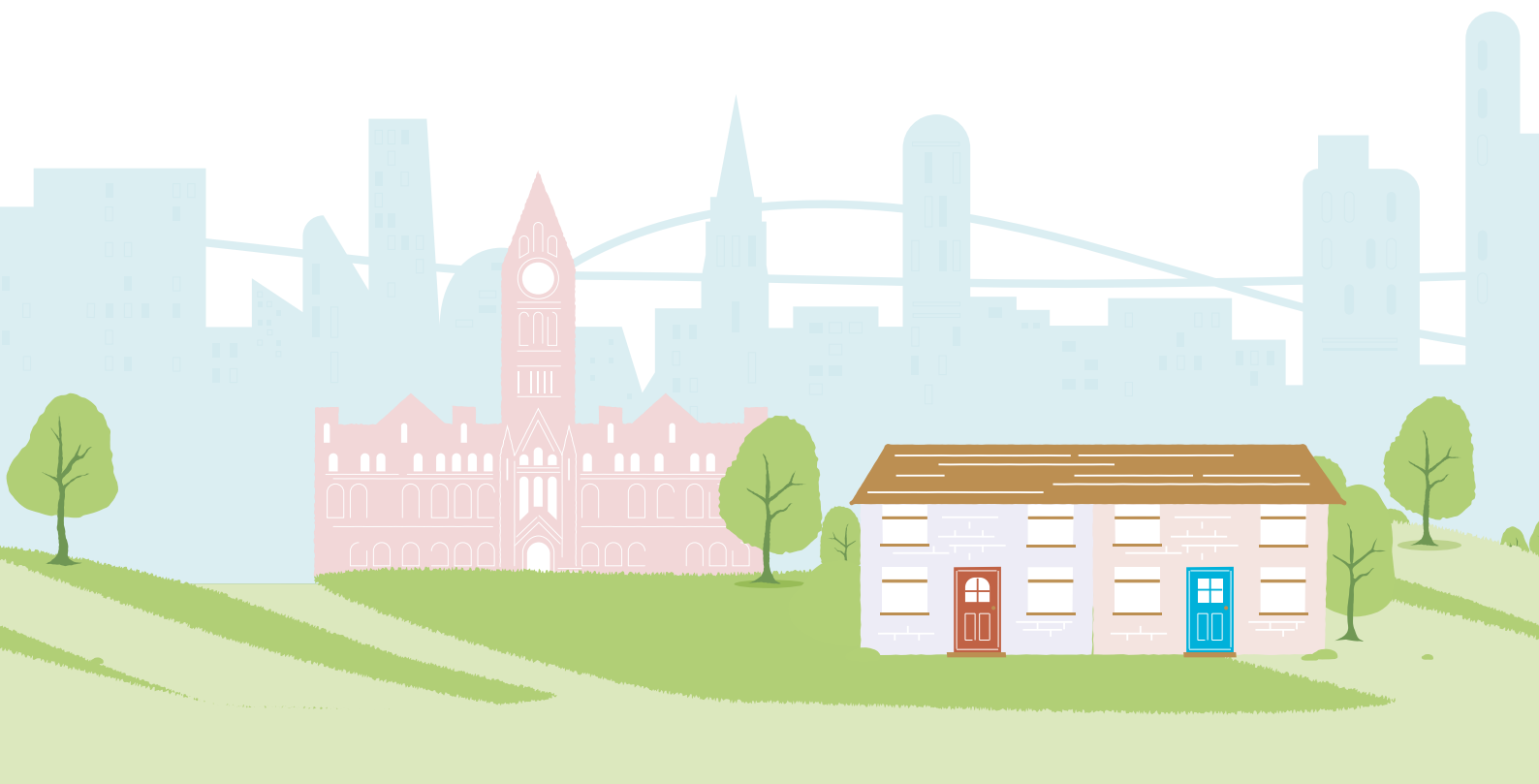
That is why I have made transport one of my top priorities. I am committed to pushing for continual improvements to our transport network so it can help make Greater Manchester one of the best places in the world to grow up, get on and grow old.

Building on our past successes, this Delivery Plan sets out the shorter-term measures and schemes our city-region so desperately needs. As is the Greater Manchester way, it has been developed in close co-operation with TfGM, GMCA and the local authorities to ensure our transport investments support and are supported by the new housing and commercial development sites in our draft Greater Manchester Spatial Framework.



It also outlines some of the key measures that we will need to develop and implement if we are to clean up our air. By dealing with the key challenges on our transport network – poor air quality, congestion and improving public transport, cycling and walking – this joined-up plan sets a clear direction for achieving better, cleaner and more connected transport for all.

Andy Burnham, Mayor of Greater Manchester



Our vision for 2040

Our vision for 2040: World-class connections that support long-term, sustainable economic growth and access to opportunity for all.

To achieve this we want 50% of all journeys in Greater Manchester to be made on foot, by bike or using public transport by 2040.



Draft Delivery Plan 2020-2025

This Delivery Plan sets out the practical transport actions that we are planning to take over the next five years. It explains the strategic background to the plan, and includes information on both committed and potential schemes over the five-year period. It also highlights the studies, schemes and further transport reforms that will be needed to deliver our long-term priorities.

The Delivery Plan has been prepared in conjunction with the Greater Manchester's Plan for Homes, Jobs and the Environment – the Greater Manchester Spatial Framework (GMSF). Both documents are the subject of consultation – to find out how to comment please see the back page of this summary.

To read the full Delivery Plan 2020-2025, please go to [tfgm.com/2040](https://www.tfgm.com/2040)

The strategic context

In autumn 2017 the Mayor launched the refreshed **Greater Manchester Strategy**, which sets out the city-region’s vision ‘to make Greater Manchester one of the best places in the world to grow up, get on and get old’. One of its ten priorities is to ensure Greater Manchester has world-class connectivity.

The **Greater Manchester Transport Strategy 2040** focuses on how a more integrated and reliable transport system can help to tackle the critical long-term challenges facing the city-region – including anticipated population growth, productivity, air pollution, health and social inclusion.

This **five-year Delivery Plan** provides an opportunity to ensure that the long-term challenges outlined in the overarching 2040 transport strategy are being tackled effectively in the near term, by taking emerging trends and new priorities into account.

These plans are underpinned by our transport vision:

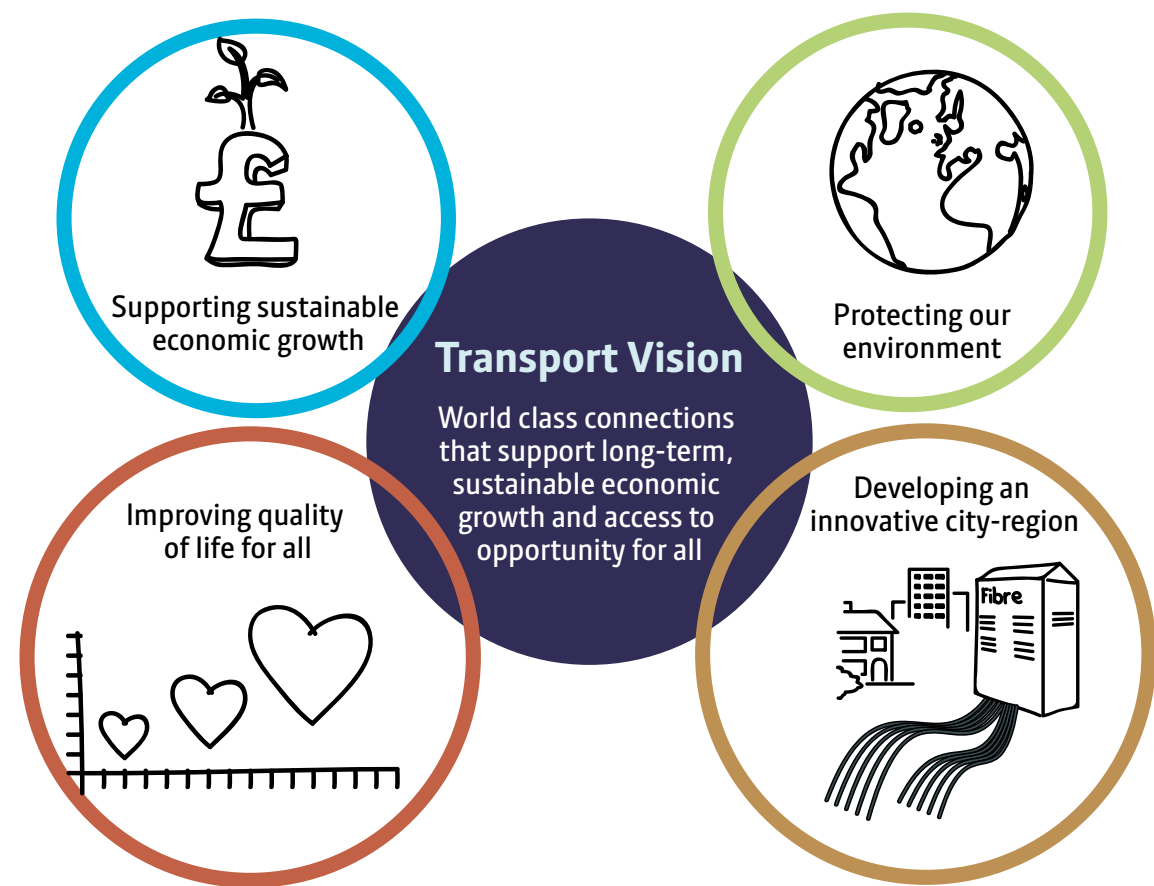


Figure 1: GM transport vision, 2040 Transport Strategy (2017)

Support sustainable economic growth and tackle congestion

Greater Manchester has ambitious plans, with major growth in employment leading to a rapidly expanding population and an increase in demand for housing. **We need to:**

- Support the Greater Manchester Strategy, the GMSF Plan for Homes, Jobs and the Environment, and the forthcoming Local Industrial Strategy.
- Develop an increasingly successful Northern Powerhouse economy, with Greater Manchester at its heart.
- Tackle congestion and enable the efficient and effective movement of people and goods.
- Ensure transport contributes to high-quality, liveable and healthy neighbourhoods, town and city centres.

Improve quality of life

One of the Greater Manchester Strategy’s goals is to ensure people across the city-region can access the jobs, education, culture and leisure they need to live fulfilling healthy and productive lives. **We need to:**

- Create an inclusive and accessible transport network that enables access to opportunities.
- Improve the connectivity, reliability and affordability of our networks for all.
- Encourage and support greater levels of walking and cycling.

Protect our environment and improve air quality

We are developing a Clean Air Plan that will enable us to meet national standards on air quality. Greater Manchester has also set targets for CO₂ emission reduction that exceed national ambitions. **We need to:**

- Reduce the impact of transport on the environment – particularly in terms of clean air and carbon reduction.
- Increase the use of sustainable transport to reduce the negative impacts of car use.

Capitalise on new technology and innovation

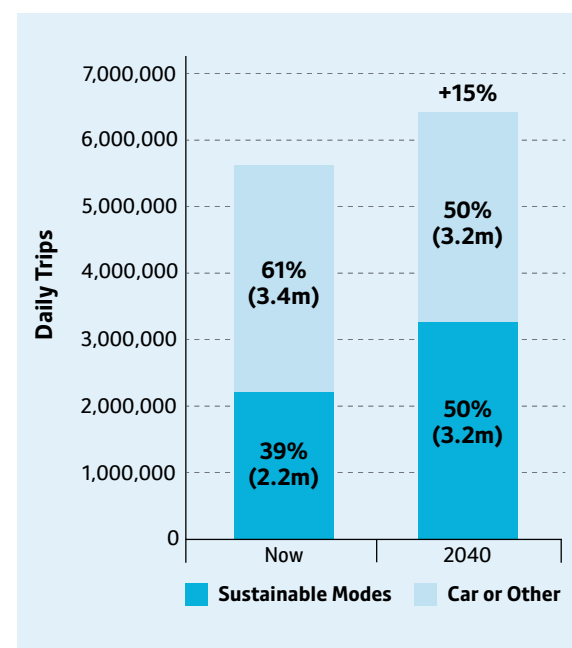
The world is changing, with developments in technology and innovation offering huge potential to change the way we live, work and travel. We intend to respond proactively to change to maximise the benefits and manage the risks. **We need to:**

- Embrace and champion innovation in the transport sector.
- Pilot new transport and travel technologies that support our 2040 priorities in line with the Local Industrial Strategy.

Achieving our vision

By 2040 we want 50% of all journeys in Greater Manchester to be made by public transport, walking and cycling, especially those shorter journeys around local neighbourhoods.

This will mean a million more sustainable journeys every day, enabling us to deliver a healthier, greener and more productive city-region without increasing motor-vehicle traffic.



Working with our partners and the public, we will continue to develop interventions that help us to realise our vision, and make Greater Manchester an even better place to be for everyone.

To achieve our vision by 2040 we must:

Ensure that new developments support sustainable transport, and that our town centres are pleasant, thriving and well connected.

Make walking and cycling the natural choice for short journeys.

Radically transform public transport capacity of the regional centre to benefit the whole of Greater Manchester.

Offer genuine alternatives to the car for travel across the wider city-region, with good orbital connections between town centres.

Maximise the efficiency and reliability of our existing transport networks.

Strengthen our position at the heart of the Northern Powerhouse by fully integrating the HS2, Northern Powerhouse Rail, and national infrastructure with regional and local networks.

Ensure Manchester Airport and the Airport Enterprise Zone sustainably meets its potential as both an international gateway and a GM employment centre.

Move and manage freight in the most sustainable and efficient ways.

Research and harness future technology, innovations and digital connectivity.

The Delivery Plan

The maps on the following pages illustrate the:

- interventions that are committed for delivery in the next five years.
- interventions for which we aim to complete the business case in the next five years.
- interventions we will develop options for in the next five years.

There are some interventions that can't easily be shown on a Greater Manchester map, including behaviour change programmes and small-scale walking and cycling schemes. These are grouped and listed in the bottom left corner of the maps.

The detailed programme has been developed in an integrated way to address the broad range of issues facing Greater Manchester, building on the significant investment that we have secured over the past decade.

MAP 1

In the next five years, we are committed to delivering...

These interventions have significant funding allocated and the case for change has been demonstrated, although final business case approval may still be needed.

Subject to business case approval

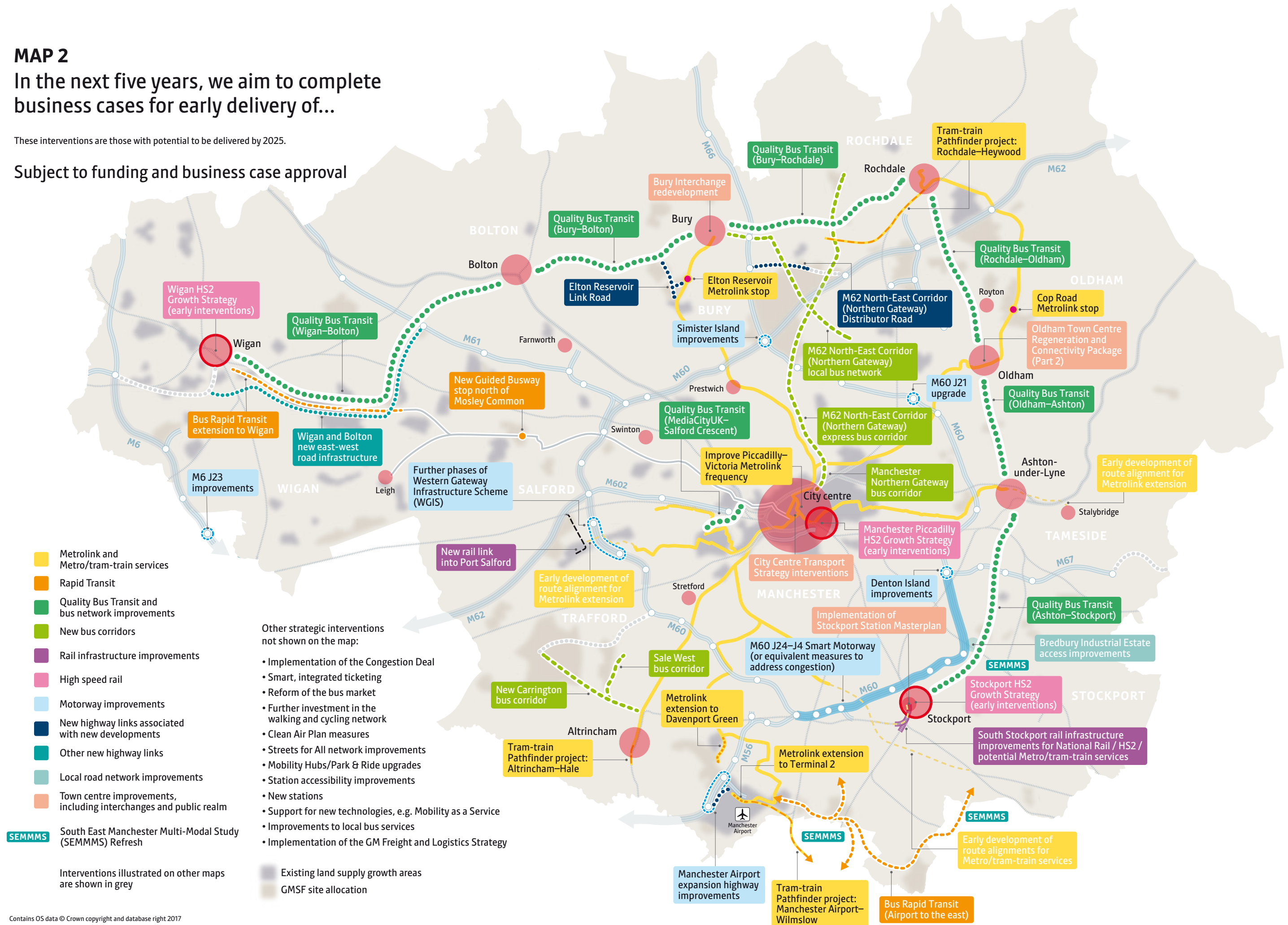


MAP 2

In the next five years, we aim to complete business cases for early delivery of...

These interventions are those with potential to be delivered by 2025.

Subject to funding and business case approval

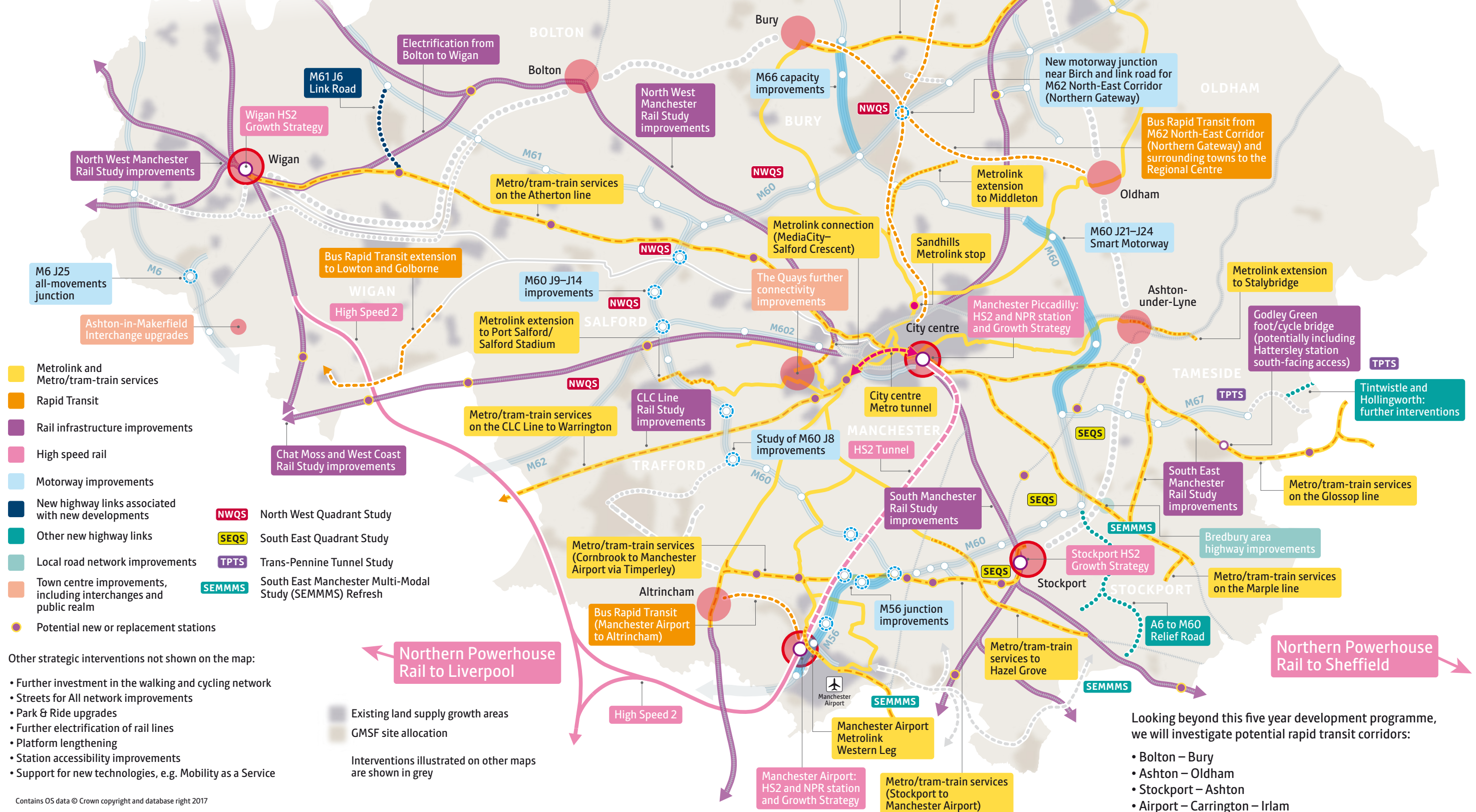


MAP 3

In the next five years, we will develop options for...

These are the interventions which need further investigation or development in order to identify future options and determine feasibility. This work may identify interventions that could be delivered by 2025, and we will aim to achieve that wherever possible, but most are longer term projects that would be delivered in later years.

Subject to funding and business case approval



In the next five years...

The Delivery Plan identifies more than 65 transport projects that will be delivered in the next five years in Greater Manchester, including:

- the Metrolink Trafford Park Line
- the purchase of 27 new trams
- £160m of new walking and cycling infrastructure across all ten districts
- expanding the city-region's electric vehicle charging network
- new interchanges in Tameside and Stockport

Delivery beyond 2025...

We hope to be well underway with our programme of interventions in the next five years, but our vision reaches far beyond this. If we are to achieve it by 2040, we must think long-term and act now.

The plan also identifies longer-term ambitions and priorities, including:

- future Metrolink expansion
- quality bus connections between the town centres
- ongoing investment in walking and cycling infrastructure
- new tram-train services
- sustainable freight projects
- preparation for the arrival of HS2 and NPR

These transport improvements are being delivered by a range of delivery bodies including Transport for Greater Manchester, local authorities, Network Rail and Highways England.



Funding and delivery

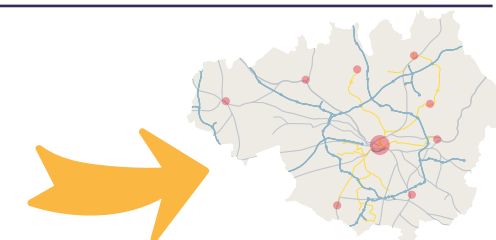
This Delivery Plan shows how, over the next five years, we will make real progress towards delivering the vision set out in our **2040 Transport Strategy and the Greater Manchester Strategy**. It sets out an integrated approach to major scheme delivery in the medium and long-term that is supported by a robust programme of investment, which will ensure our transport network meets the needs of residents, businesses and visitors.

Delivery of Greater Manchester's aspirations, as set out in this plan, will require:

Revenue funding to carry on planning, running, maintaining and subsidising transport services.



Long-term capital funding to invest in new transport infrastructure and make improvements to our current networks.



There is a funding programme in place which starts to help delivery these ambitions, but we will need a step change in funding to realise our full vision. We will also need to influence Network Rail and Highways England funding decisions.

The Delivery Plan has an important role in supporting Greater Manchester to achieve greater long-term certainty over transport funding. In particular, we want to establish a fully devolved, long-term infrastructure budget for Greater Manchester, as recommended in the National Infrastructure Commission's recent National Infrastructure Assessment. We are encouraging Government to consider this through the current National Spending Review.

The Delivery Plan also sets out the resources and powers we are asking for from Government, which includes a Greater Manchester Transport Fund 2 and greater powers over areas such as highway management, taxi and private hire vehicle licensing, the bus network, rail franchises and stations.

TfGM, the GMCA and the ten local authorities are united in their call on Government to take action, and agree a new deal for Greater Manchester to make this plan a reality.



Greater Manchester's support is vital to the success of this Delivery Plan.

We need to develop a transport network that works for everyone.

That's why we want you to share your views on this Delivery Plan by emailing us with any comments at **2040@tfgm.com** or by making comments on the GMSF at **www.gmconsult.org** – because a network that works for everyone must be informed and developed by everyone.

To see the full delivery plan please visit: **tfgm.com/2040**

To see the GMSF Plan for Housing, Jobs and the Environment visit:
www.gmconsult.org