

TRAVELSAFE

PARTNERSHIP

Strategy 2019–2021





Foreword

As the fastest growing city region outside London, our expanding and evolving transport network is at our very core.

With a responsibility for policing and transport, one of my utmost priorities is the safety and wellbeing of all those who use our bus, tram and highway networks, which are collectively responsible for tens of thousands of passenger journeys every day.

Given the size of these networks, incidents of crime and antisocial behaviour remain relatively low, with many of the recorded incidents relating to low-level nuisance behaviour. However, it's vital that we continue to build on the work already being done to keep the networks safe.

The TravelSafe Partnership (TSP) is a multi-agency initiative, set up to keep the public safe by deterring and preventing crime and educating young people on the dangers and consequences of antisocial and criminal behaviour.

Since becoming Mayor I have overseen a significant enhancement to the Partnership, with the addition of extra officers to patrol the networks. I have sought and secured changes to legislation that will allow TfGM to apply for civil injunctions to ban nuisance and criminal passengers from the transport network. We've extended the use of body-worn cameras to front line staff, have made the transport control centre into a 24/7 operation and, significantly, engaged with tens of thousands of children as part of the TravelSafe's youth engagement programme.

Public transport is the lifeblood of any great city region: whether its to enable us to visit family and friends or give us access to jobs, retail and leisure opportunities.

It's therefore absolutely critical to me that people are not only safe, but that they feel safe when travelling, which is why the work that the TravelSafe Partnership is and will deliver – as set out in this strategy – is so important.



Andy Burnham
The Mayor of Greater Manchester

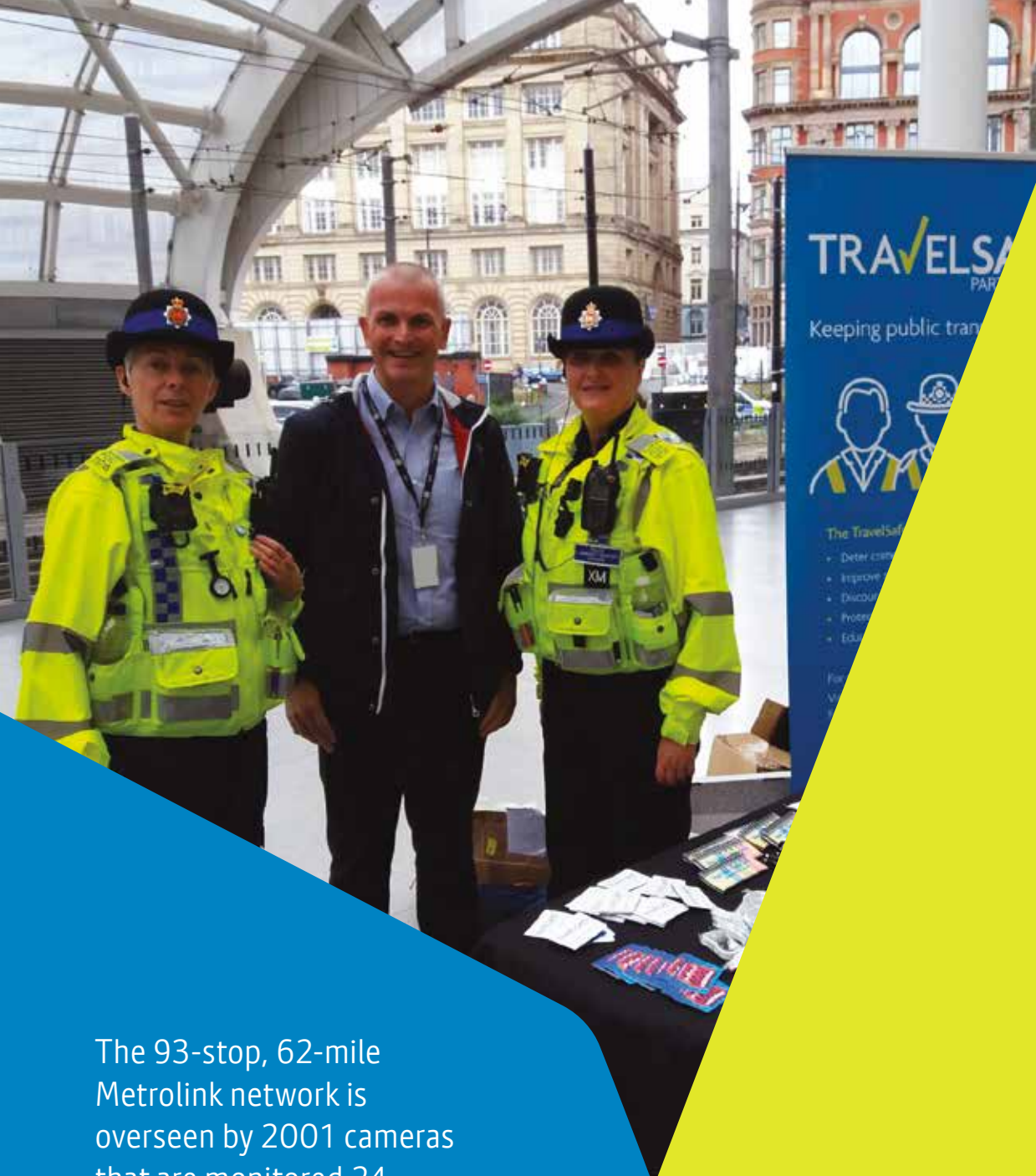
Introduction

TravelSafe is a joint partnership brought together to help support a safe and secure transport network across Greater Manchester.

The Partnership is led by Transport for Greater Manchester (TfGM) and Greater Manchester Police (GMP) with support from transport operators:

KeolisAmey Metrolink, Stagecoach and First Manchester. British Transport Police (BTP) works with TravelSafe and attends the Strategic Steering Group.





The 93-stop, 62-mile Metrolink network is overseen by 2001 cameras that are monitored 24 hours, seven days a week

Strategic Aim 1

Improve the perception of safety and security across public transport, offering reassurance to passengers.

Measures of success

- Results of Transport Focus Survey along with locally commissioned surveys (e.g. Vantage and free bus).
- Programme of communications and marketing activities.
- Established programme of continuous educational, reassurance and community based activities.
- Improved use of CCTV, lighting customer contact points and other safety in-design measures e.g. Park Mark accreditation.
- Development of a Tactical Delivery Plan which brings together all strands of TravelSafe Partnership activity, ensuring visibility, joint ownership and best use of resources across the partnership's reactive and preventative activities.

Strategic Aim 2

Manage instances of crime and antisocial behaviour (ASB) occurring on the transport network.

Measures of success

- Effective deployment of TravelSafe resources to hotspots and emerging trends of ASB, identified through data analysis of incidents reported from across the partnership.
- Outcomes of local partnership plans developed to problem-solve at identified hotspots.
- Reactive adjustment of TravelSafe resource response following outputs of pacesetter meetings.



Strategic Aim 3

Discourage fare evasion

Measures of success

- Employ differing tactics across the partnership to help deter and apprehend fare evaders. For example pursuing serious and organised fraud in connection to fare evasion.

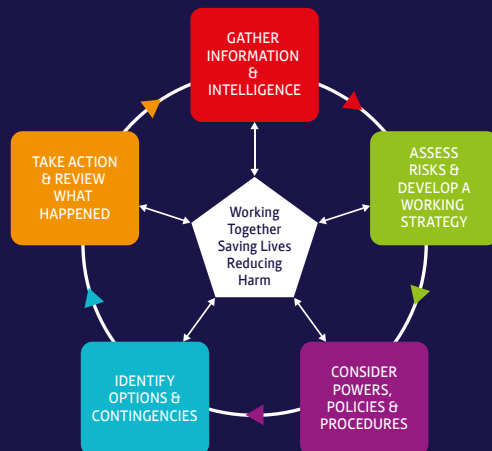
During 2018, the TSP visited 238 schools, engaging with 11,368 students. They also attended three University fresher events, engaging with over 3000 students



Delivering the aims

To help deliver these aims, the partnership will:

- Develop and resource a co-ordinated programme of community engagement to maximise TravelSafe messages, delivered through the partnership;
- Proactively communicate the activities and successes of TravelSafe:
 - To the travelling public, through a pre-planned and targeted communications and marketing programme; and
 - To partnership members, internal and political stakeholders.
- Work closely with neighbourhood policing teams, local authorities and community groups, to tackle issues arising from crime and ASB where it impacts upon transport;
- Use data analysis to identify trends and support tactical decisions around interventions;
- Work to threat, harm and risk principles to determine the best use of partnership resources including staffing deployments, by embedding the use of the National Joint Decision-Making Model (JDM); and
- Explore and pursue a range of civil powers e.g. through civil injunctions and bye-laws.





Influencing factors

There are a range of factors that influence and have a bearing upon the TravelSafe Partnership:



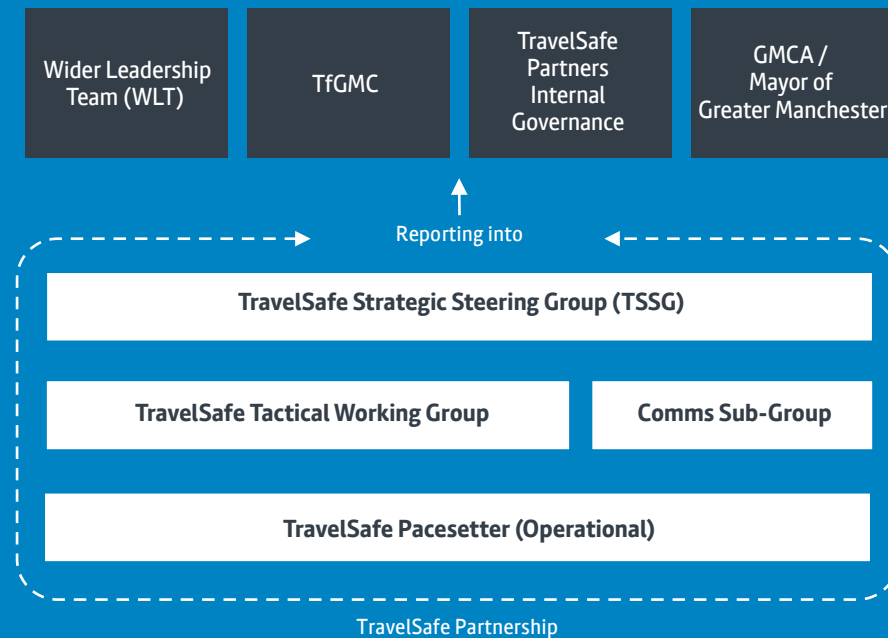
In particular, the TravelSafe Partnership directly contributes to the delivery of elements of the Police and Crime Plan – Standing Together, which outlines three priorities:

- Priority One 'Keeping People Safe': protecting and caring for people who live, work, socialise and travel in Greater Manchester;
- Priority Two 'Reducing Harm and Offending': preventing antisocial and criminal behavior; and
- Priority Three 'Strengthening Communities and Places': helping to build resilient communities and protecting the places where people live, work, socialise or travel.

Governance

TravelSafe receives political leadership and direction through the Greater Manchester Combined Authority (GMCA), the Mayor of Greater Manchester, along with the Transport for Greater Manchester Committee (TfGMC) and Wider Leadership Team.

As a multi-agency partnership, it brings together a range of stakeholders. In order to drive forward the partnership, a governance framework has been established to ensure clear lines of accountability, responsibility, reporting and decision-making.



Resources

TravelSafe brings together a wide range of resources to support delivery of the partnership's strategic aims.

This encompasses management resource, data analysis capability and marketing and communication resource.

This, combined with a dedicated team of Police Officers, Employee Supported Police, Police Community Support Officers and TravelSafe Officers, providing regular patrols on and around the transport networks as well as school and community work, makes up the TravelSafe Partnership.

The TSSG will ensure sufficient resources are supplied to deliver the strategy and TravelSafe Partnership priorities.



Funding

TravelSafe is a strategic partnership without independent financial standing. Activities and resources are funded by partners via a mix of financial contributions and in-kind support through staff secondments into special constable roles through the national Employer Supported Policing Scheme.

