

# Broughton Cycleway



2km route with cyclists separated from traffic in both directions



10-minute cycle time\*



Connecting residential areas in Broughton to Manchester city centre

Broughton cycleway is the longest 'light segregation' scheme in the UK with cycle lanes protected from other traffic

Connecting link from cycleway to Chapel Street through a combination of new facilities on Silk Street and quiet streets

Connections to Irwell River Park and National Cycle Route 6

## Links

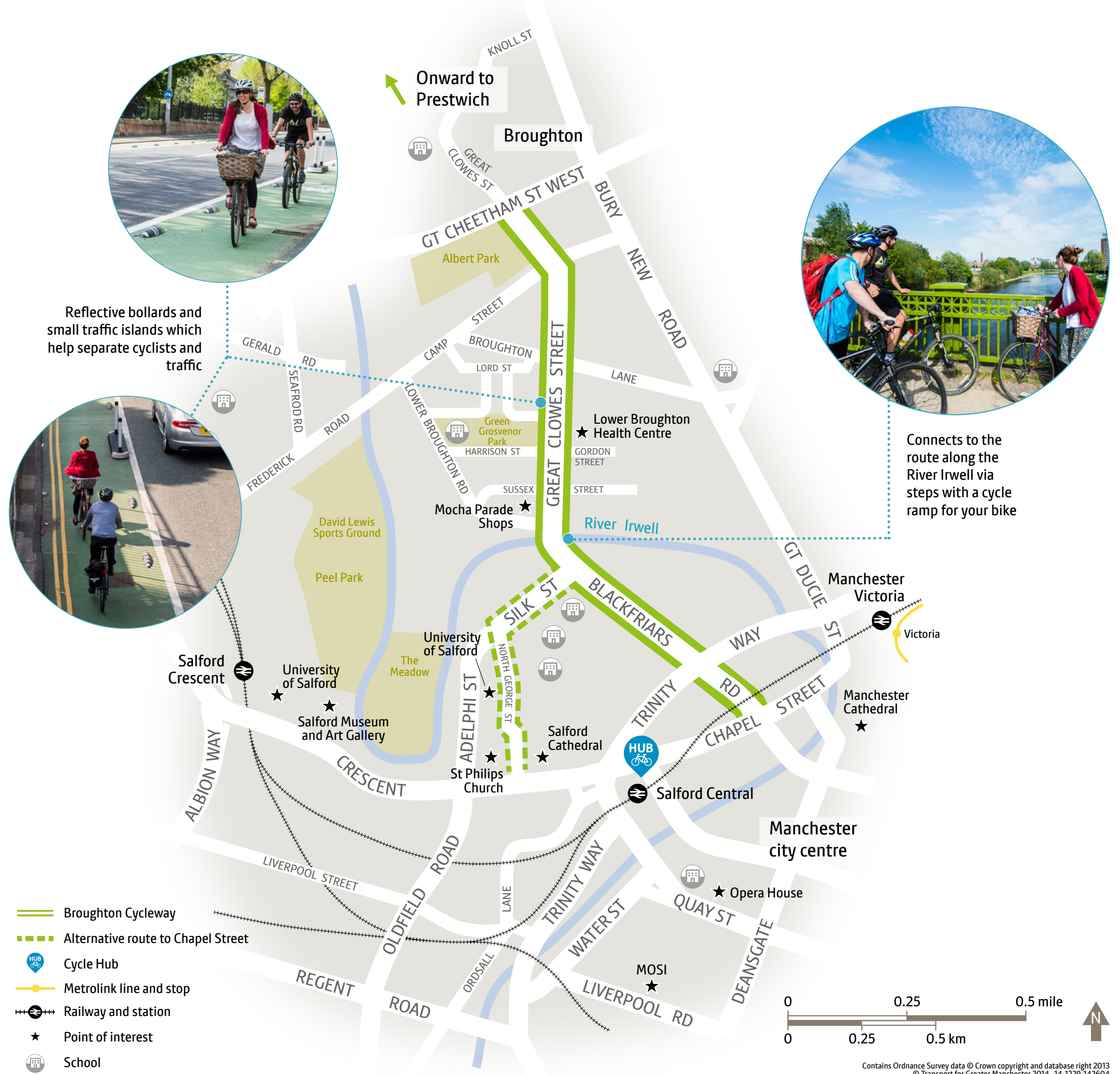


Broughton

Irwell River Park

Manchester city centre

\* cycle time is based on 4 minutes per km travel rate (15kph) and rounded to nearest 5 minutes



Contains Ordnance Survey data © Crown copyright and database right 2013  
© Transport for Greater Manchester 2014 14-1229-142604



## Broughton Cycleway

Broughton Cycleway links Broughton and Manchester city centre.

The cycleway has specially designed traffic islands and reflective bollards to separate cyclists and traffic. This gives dedicated space to cyclists on Great Clowes Street and Blackfriars Road.

There is also a new link along Silk Street connecting the route to National Cycle Route 6 by Salford Cathedral.

For more information visit  
[www.tfgm.com/cycleways](http://www.tfgm.com/cycleways)



## Greater Manchester Cycleways

Cycling is a quick and easy way to get around and, with six new cycleways to explore, there's never been a better time to get on your bike.

Whether you're on the daily commute, nipping to the shops or enjoying a family day out, Greater Manchester's Cycleways are an ideal way to travel.

The new routes give cyclists more space as some are separated from traffic and others are completely traffic-free, making it easier to get around Greater Manchester.

**It's time to discover Greater Manchester by bike.**

For more information visit  
[www.tfgm.com/cycleways](http://www.tfgm.com/cycleways)

## Broughton Cycleway

Making travel  
by bike easier  
in Greater  
Manchester



### Cycle Hubs

- Park your bike with confidence at one of our Cycle Hubs, located at key public transport locations across the region.
- Cycle Hubs offer sheltered bike storage, with CCTV and swipe card entry.



### Training

- We can get you on your way with our FREE adult training sessions to help improve your confidence on two wheels.
- Great for everyone, from beginners to advanced cyclists, on off-road routes and in rush hour traffic.



### Cycle maps

- Our cycle maps show the cycle networks in each of the 10 Greater Manchester districts.
- The maps also include details of bike parking, nearby cycle shops and key points of interest.
- PDF versions of the cycle maps are available to download from our website. You can also request printed copies of the maps from the TfGM cycling team.
- The full Greater Manchester cycle map can also be viewed on our website.

Whether you want to join the Cycle Hub scheme, book a training session, check out our cycle maps, get in touch with the TfGM cycling team and more, visit [www.tfgm.com/cycling](http://www.tfgm.com/cycling).



More than  
45km of new  
and improved  
cycleways  
delivered by  
our Cycle City  
programme



## Broughton Cycleway

Broughton

Manchester city centre

Irwell River Park

## Greater Manchester Cycleways

**Broughton Cycleway** is one of six new cycleways for you to explore across Greater Manchester.

For more information visit  
[www.tfgm.com/cycleways](http://www.tfgm.com/cycleways)

Key

- Bridgewater Canal Cycleway
- Broughton Cycleway
- Ashton Canal Cycleway
- Wilmslow Road Cycleway
- Mersey Valley and Stockport Cycleway
- Airport City Cycleway

Based on aerial photography  
Contains Ordnance Survey data  
© Crown copyright and database right 2010

