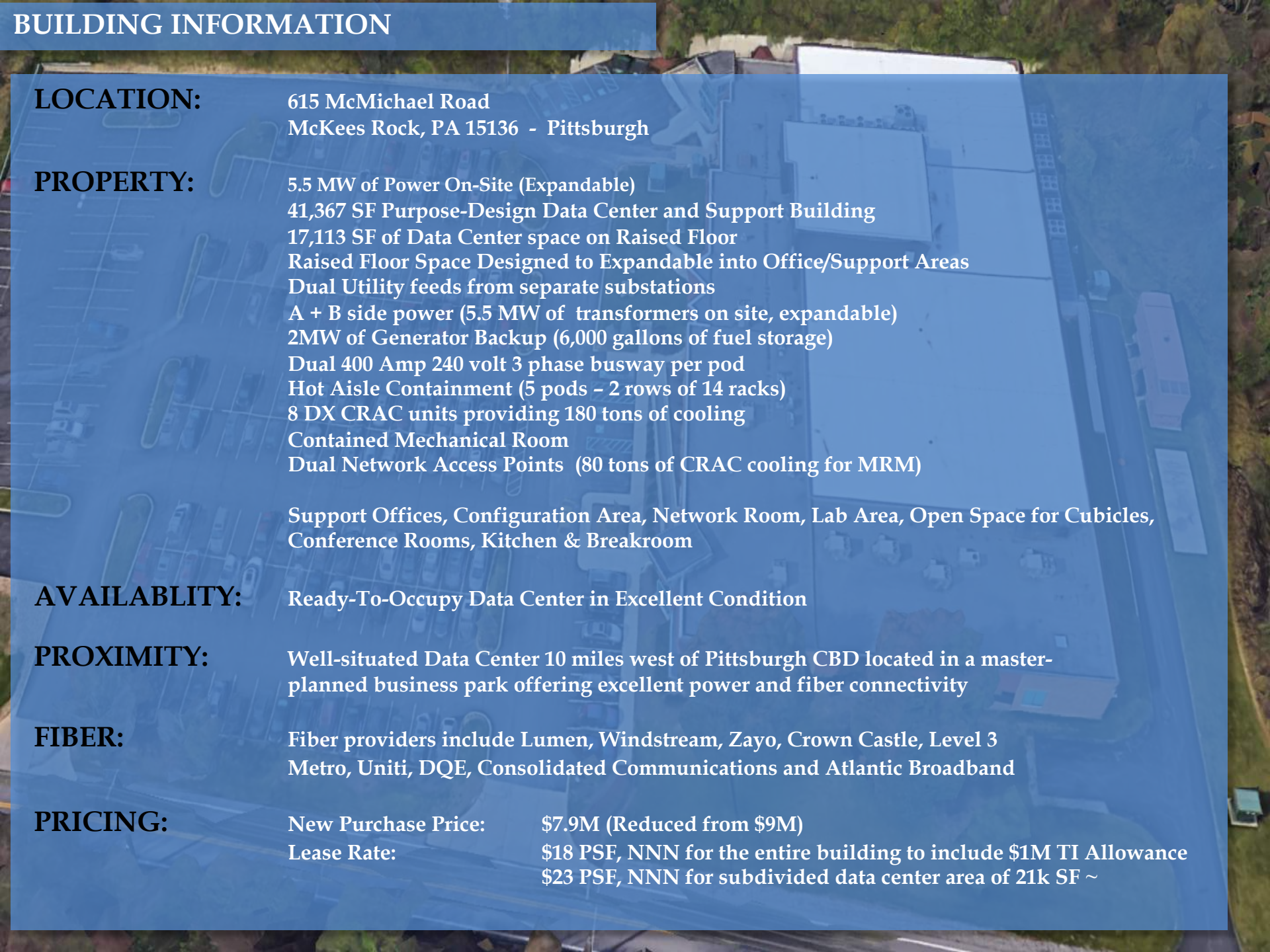


For Lease or For Sale
Free-Standing Data Center & Support Building
5.5MW+ – Ready to Occupy

Pittsburgh PA

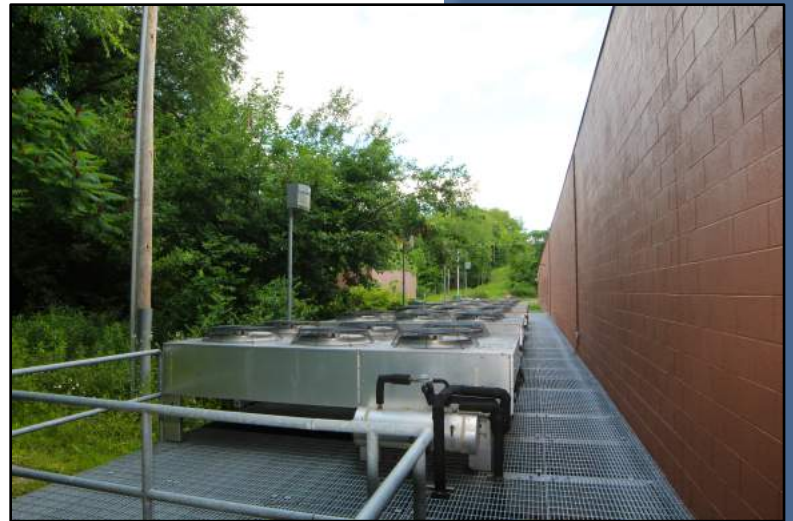




BUILDING INFORMATION

| | | | |
|----------------------|--|---|--|
| LOCATION: | 615 McMichael Road McKees Rock, PA 15136 - Pittsburgh | | |
| PROPERTY: | 5.5 MW of Power On-Site (Expandable) 41,367 SF Purpose-Design Data Center and Support Building 17,113 SF of Data Center space on Raised Floor Raised Floor Space Designed to Expandable into Office/Support Areas Dual Utility feeds from separate substations A + B side power (5.5 MW of transformers on site, expandable) 2MW of Generator Backup (6,000 gallons of fuel storage) Dual 400 Amp 240 volt 3 phase busway per pod Hot Aisle Containment (5 pods - 2 rows of 14 racks) 8 DX CRAC units providing 180 tons of cooling Contained Mechanical Room Dual Network Access Points (80 tons of CRAC cooling for MRM) Support Offices, Configuration Area, Network Room, Lab Area, Open Space for Cubicles, Conference Rooms, Kitchen & Breakroom | | |
| AVAILABILITY: | Ready-To-Occupy Data Center in Excellent Condition | | |
| PROXIMITY: | Well-situated Data Center 10 miles west of Pittsburgh CBD located in a master-planned business park offering excellent power and fiber connectivity | | |
| FIBER: | Fiber providers include Lumen, Windstream, Zayo, Crown Castle, Level 3 Metro, Uniti, DQE, Consolidated Communications and Atlantic Broadband | | |
| PRICING: | New Purchase Price: | \$7.9M (Reduced from \$9M) | |
| | Lease Rate: | \$18 PSF, NNN for the entire building to include \$1M TI Allowance \$23 PSF, NNN for subdivided data center area of 21k SF ~ | |

BUILDING



INTERIOR PHOTOS



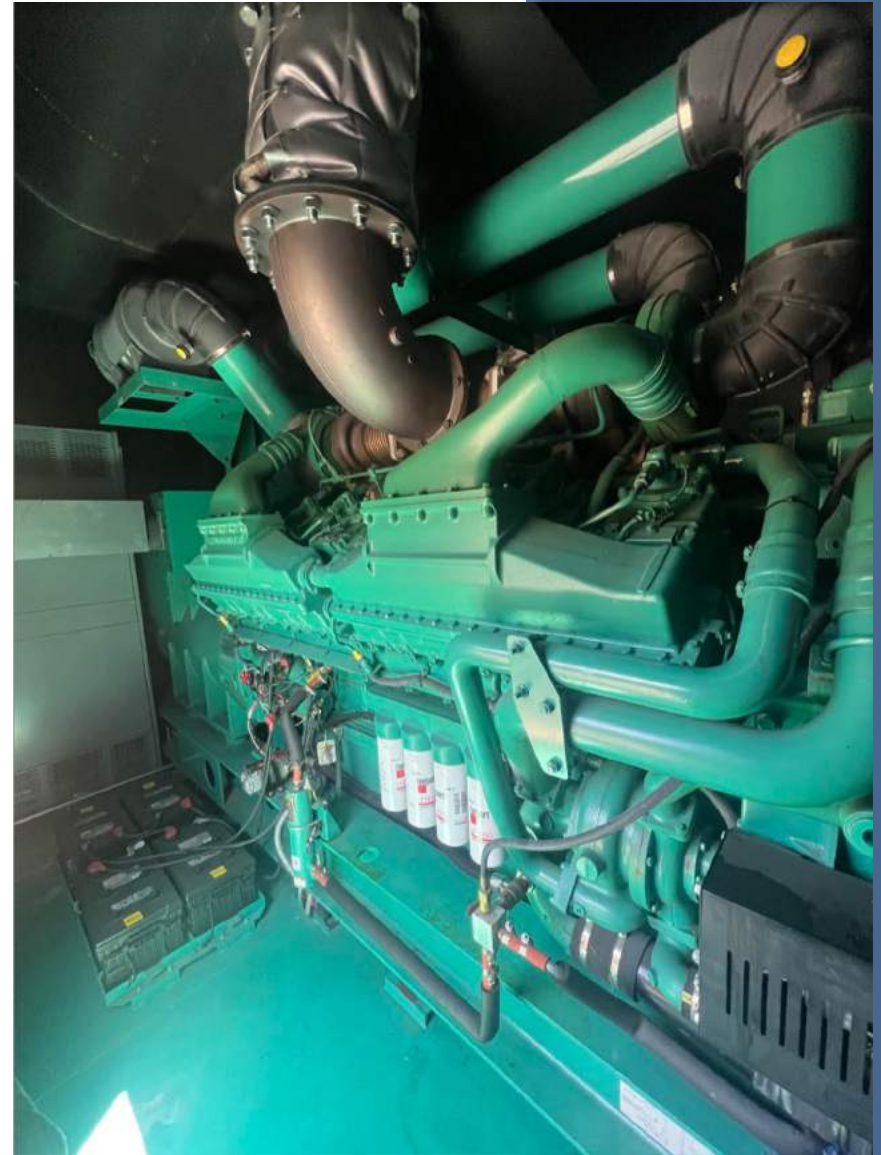
INTERIOR PHOTOS



INTERIOR PHOTOS



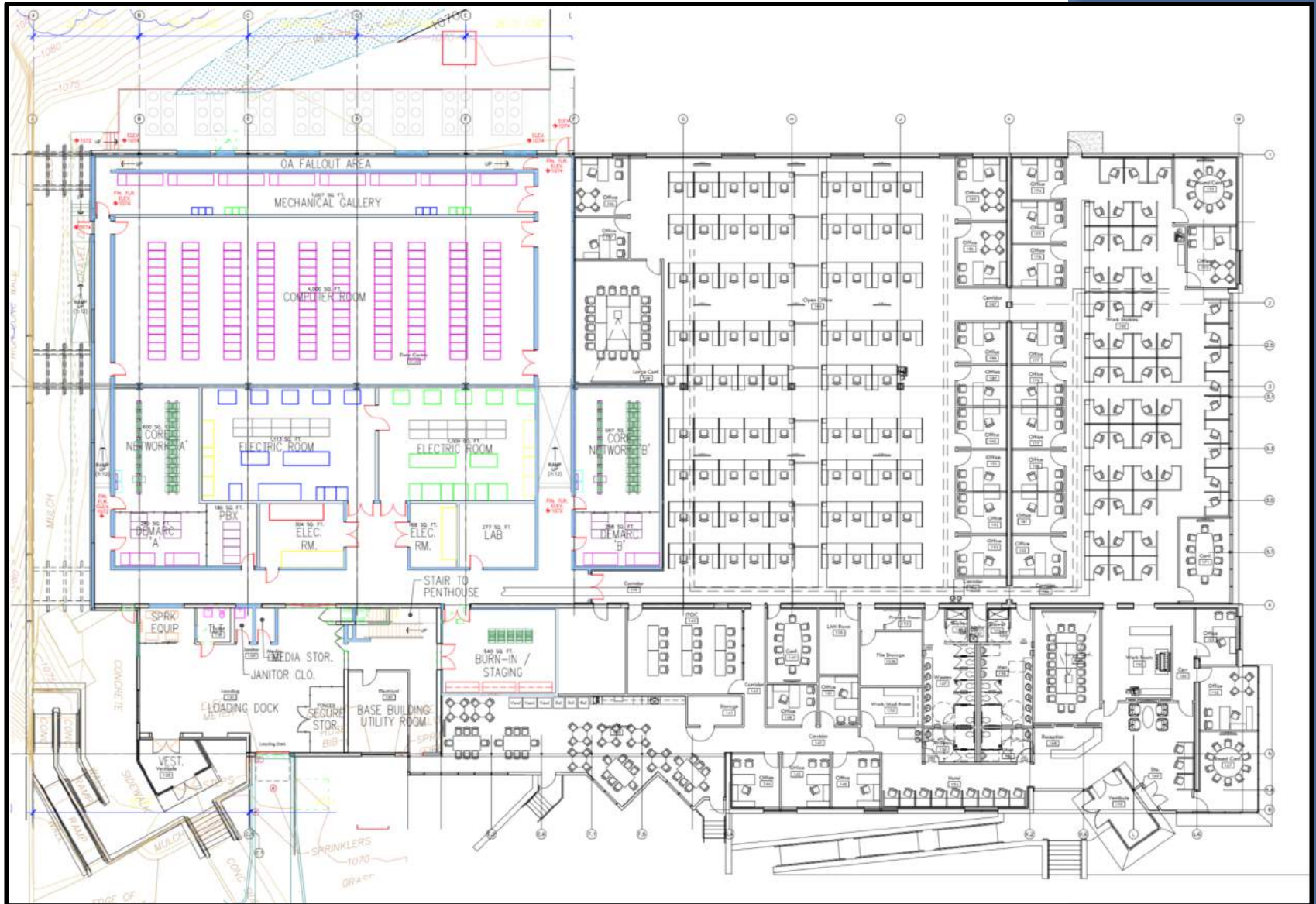
GENERATOR



SUPPORT & OFFICE AREAS

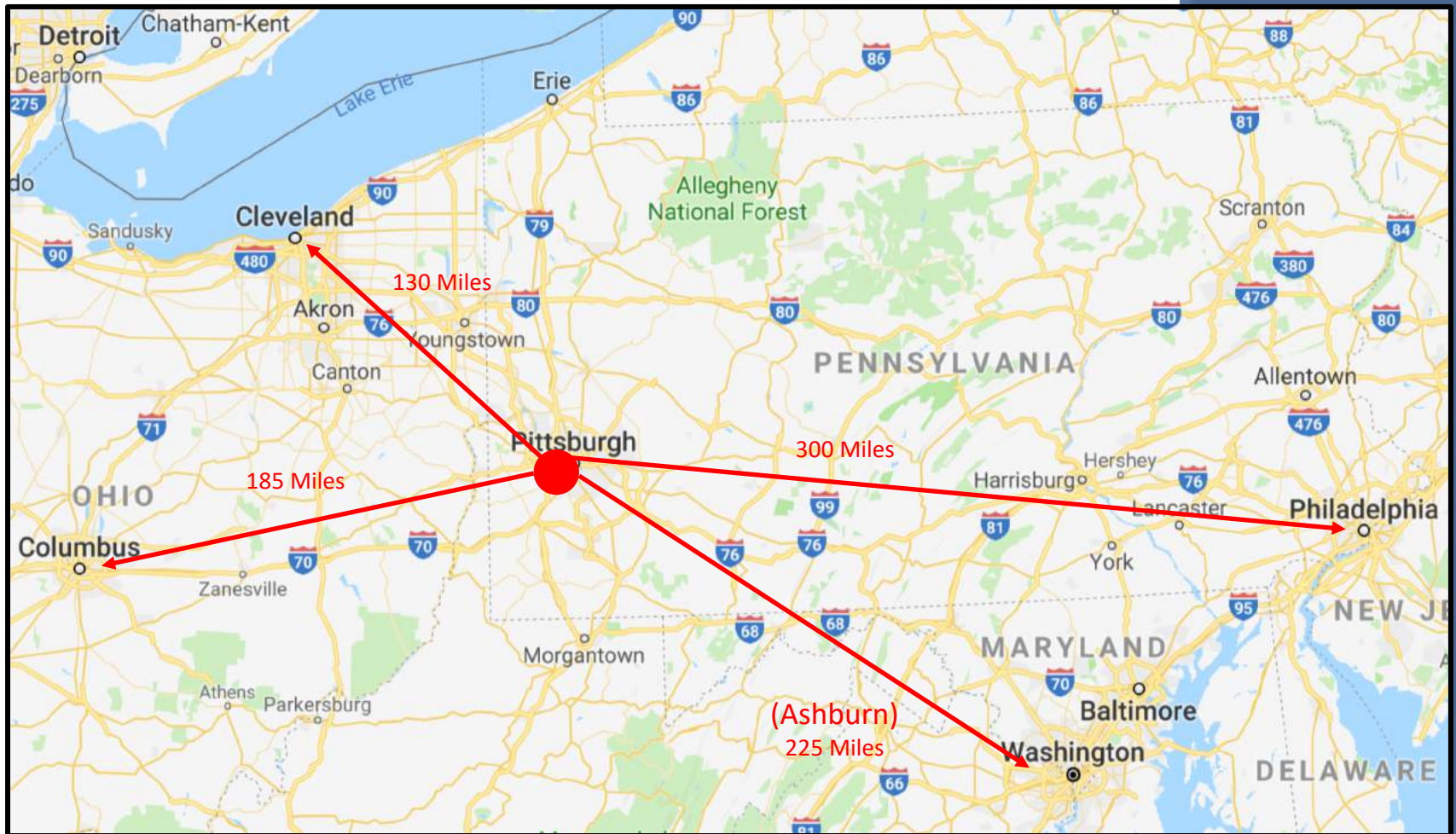


FLOORPLAN





LOCATION



FIBER MAP – Metro & Long Haul

FiberLocator

615 McMichael - Pittsburgh

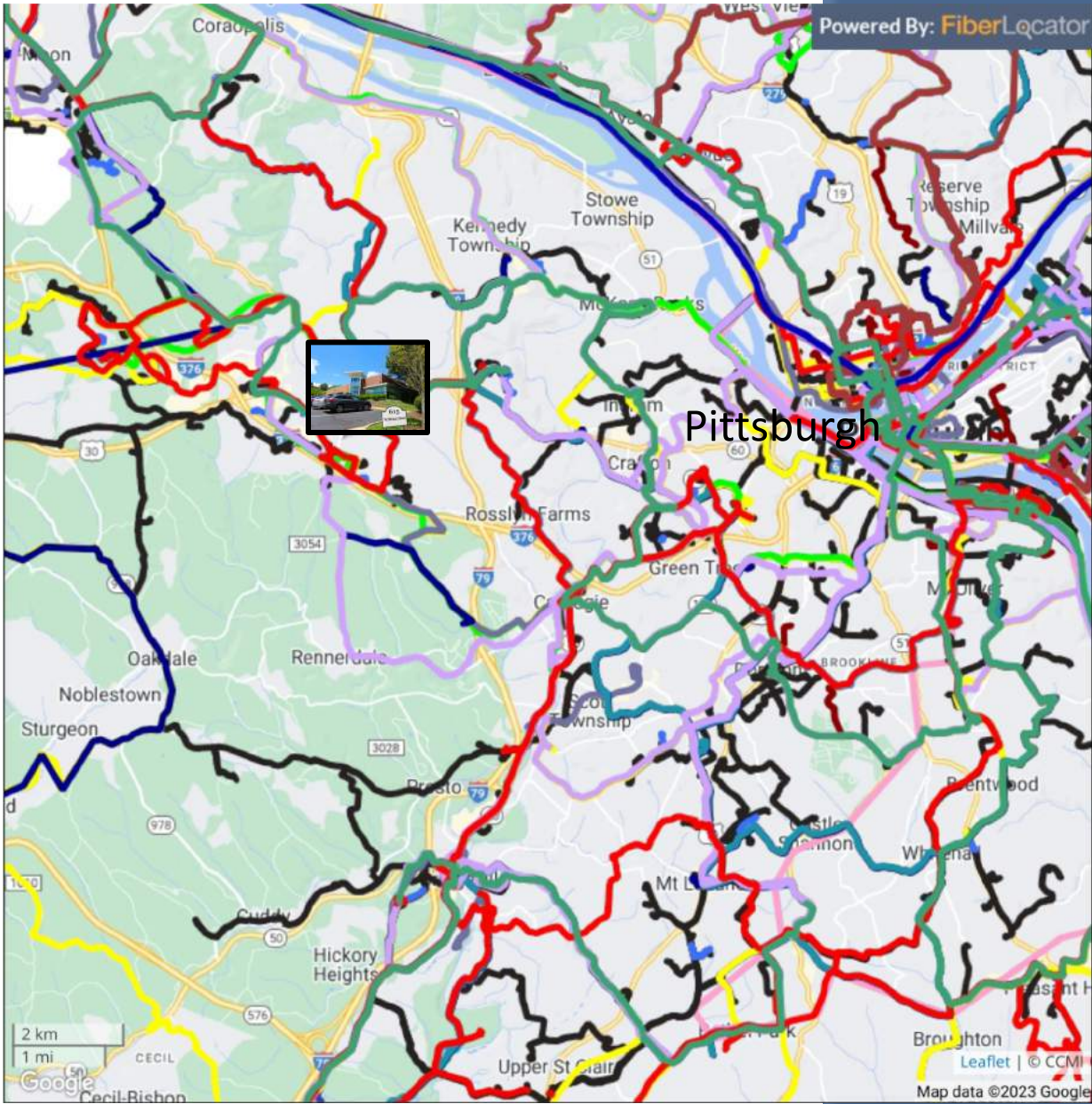
615 McMichael Rd, Pittsburgh, PA 15205, USA

Metro Networks

- Breezeline
- Breezeline Leased
- CenturyLink Metro
- Consolidated Communications
- Crown Castle
- DQE
- Everstream
- ExteNet Systems
- FirstLight
- Hudson Fiber
- Level3 Metro
- PennREN - KINBER
- Salsgiver Telecom
- Segra
- Uniti Fiber
- Windstream
- Windstream - Dark
- Zayo Metro
- Zito Business

Long Haul Networks

- Arelion - International Long Haul
- CenturyLink Long Haul
- Hudson Fiber LH Leased
- Level 3 Long Haul
- Sprint Long Haul
- Windstream Long Haul
- Zayo Long Haul



FIBER MAP - Long Haul

FiberLocator

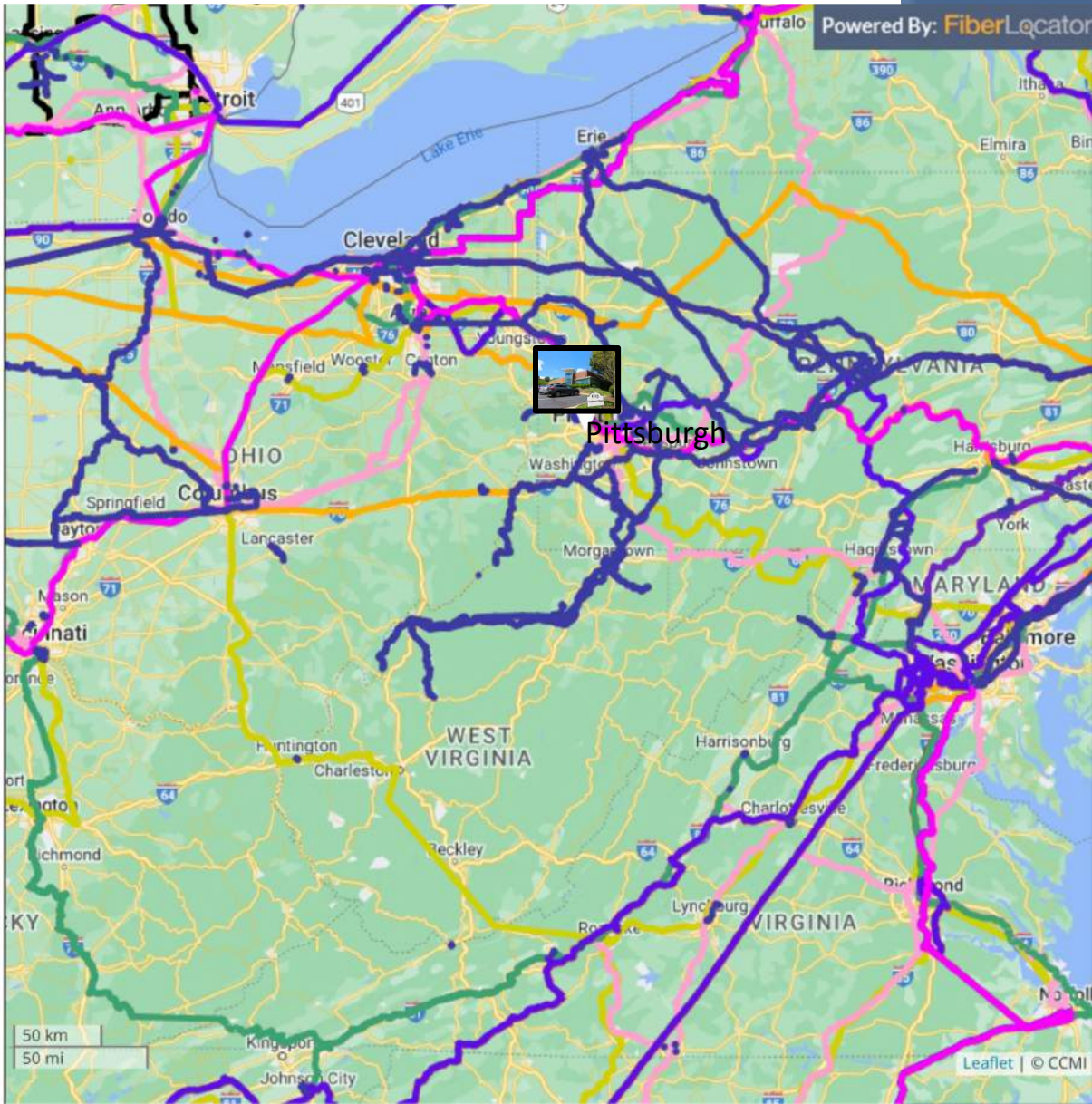
Long Haul Fiber - Pittsburgh



615 McMichael Rd, Pittsburgh, PA 15205, USA

Long Haul Networks

- 123Net
- AT&T Long Haul
- Arelion - International Long Haul
- Arelion Long Haul
- CenturyLink Long Haul
- Hudson Fiber LH Leased
- Level 3 Long Haul
- Neutral Path Communications LH
- SDN Long Haul
- Sprint Long Haul
- Summit IG Dark Long Haul
- United Fiber and Data
- Vivacity Infrastructure Group
- Windstream Long Haul
- Zayo Long Haul
- redIT



PITTSBURGH OVERVIEW

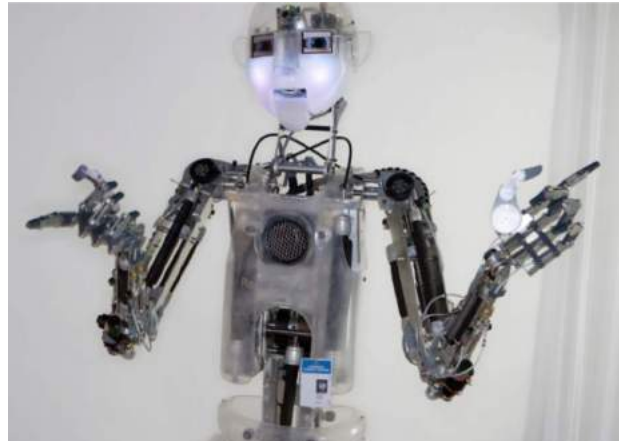
Pittsburgh Pennsylvania offers a competitive cost of doing business, robust and educated workforce with one of the most active corporate and government R&D initiatives in the country. The Pittsburgh metropolitan region has a population of nearly 2.37M and has successfully transitioned to high technology, AI, robotics, nuclear engineering, health care, biomedical technology, finance and education. Pittsburgh is considered the birthplace to artificial intelligence (AI) which began with Carnegie Mellon in the 1950s and home to numerous AI companies, related talent and the top AI graduate program in the sector.

Both Google and Apple opened announced new R&D locations in the area. AI announcements include Meta AI Lab, Amazon AI, Bosch AI, Fortive, Edge Case Research Research, and LegalSifter. Recent Cybersecurity initiatives include Acronis, Continuum and Fifth Wall Solutions among others and the fast-growing robotics sector includes Gecko Robotics, Bossa Nova, Locomotion, Honeywell Robotics, Astrobotic, Seegrid, Denso, Motional, Waymo, Thoro.ai, Michelin DDI, and Mapless AI among others. And the Life Sciences sector has been incredibly active in the area including companies such as Excelsior Health, UPMC, Allegheny Health Network, Maitri Medicinals, Lockwood Development Partners, Pantherex Speciality Pharmacy, WVU Medicine, and Krystal Biotech.

Pittsburgh area data centers have been active due to the rapidly growing tech sector and the State of Pennsylvania, beginning January 1, 2022, passed legislation where data center equipment is exempt of Pennsylvania sales and use tax subject to meeting certain criteria.

While technology has been a fast growing component in the Pittsburgh area, it is also home to Fortune 500 companies including:

- Arconic Corporation
- Viatis
- Comcast
- Rite Aid
- Kraft Heinz
- PNC Financial
- Alcoa
- WESCO
- Wabtec Corporation
- Dick's Sporting Goods



For more information:

Doug Hollidge

704.651.2210

doug@five9sdigital.com

Stephen Bollier

310.704.2547

steve@five9sdigital.com



FIVE 9s DIGITAL

www.five9sdigital.com