

AVAILABLE - BUILD-TO-SUIT / LAND FOR SALE

CHARLOTTE GATEWAY DATA CENTER

Charlotte, North Carolina



Romans Properties LLC



FIVE 9s DIGITAL

Charlotte Gateway Data Center Charlotte, NC

SPECIFICATIONS

POWER

LOCATION

FLOOR PLAN

HAZARD AVOIDANCE

REGIONAL PROFILE

CONCLUSION



LOCATION

- 120 N Myers Street – Charlotte, NC
- Charlotte Network Access Point (NAP)
- Next to Digital Realty Trust's North Myers Data Carrier Hotel Complex

BUILDING SIZE

- Purpose Designed 62,000 SF – Flexible Size Options
- Carrier Hotel Data Center

POWER

- Duke Energy
- Highly reliable, scalable power
- Power in the \$.05 - \$.06 per kwh range pending load
- Economic incentive opportunities with Duke Energy for new customers

FIBER

- Numerous fiber providers available
- Fiber conduit in diverse locations
- Adjacent to AT&T Central Office (CO)

FIBER PROVIDERS

- AT&T, Lumen, Zayo, Verizon, Segra, Cogent, T-Mobile and others

EQUIPMENT YARD

- Generator and fuel storage pads stubbed into building
- Multiple transformer pads stubbed into building

FLOOR

- Open floor plates
- Fully autonomous data suites
- 300 – 500 PSF live floor loads

ROOF | FLOOR HEIGHT

- Structurally enhanced roof system
- Floor heights 14' – 16' clear

WATER | SEWER

- City Water
- City Sewer

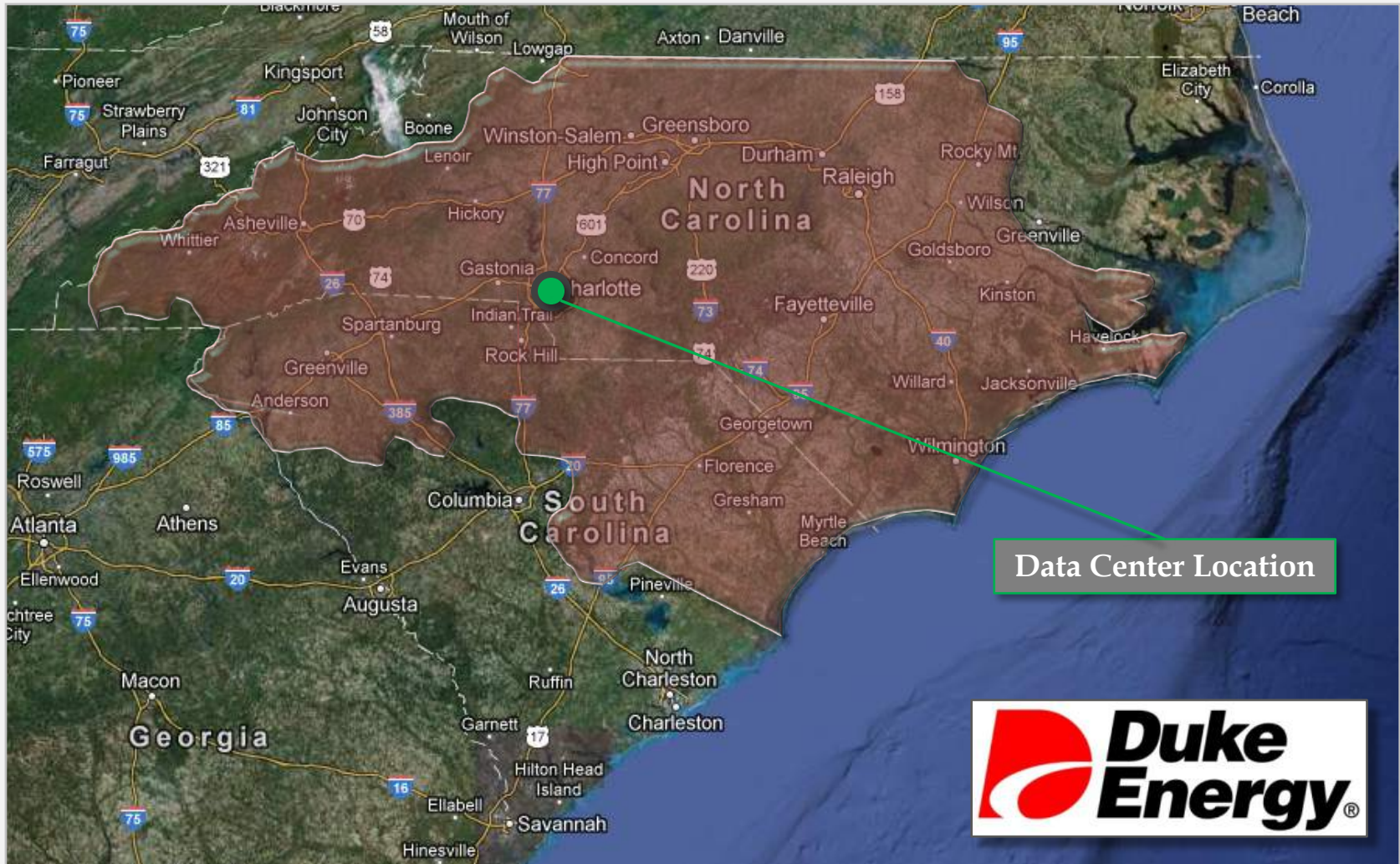
SECURITY

- State-of-the-Art security system
- 7 x 24 access

FIRE PROTECTION

- Dry-pipe pre-action fire protection system





The planned Data Center is located in the heart of Duke Energy's service area, with access to abundant, low-cost power.

Electric rates typically range between \$.05 and \$.06 per KWH for high load customers. Power incentives available.

45.7% of Duke Energy's power is generated at Nuclear Generation Plants. Duke energy offers a diverse generation portfolio that ensures rate stability and offers green energy blends.

LOCATION

Charlotte Gateway, North Carolina

The Charlotte Gateway Data Center benefits from being located in the high demand, low supply Charlotte, North Carolina data center market.

Charlotte has quickly become the “gateway” for data traffic on the east coast of the United States, providing an ideal transition from areas such as New York and northern Virginia to Atlanta and Miami.

The data center (highlighted in green below) is conveniently located with quick access to I-277, I-77, I-85, I-485, and is less than 10 miles from the Charlotte-Douglas International Airport.



LOCATION

Charlotte Gateway, North Carolina



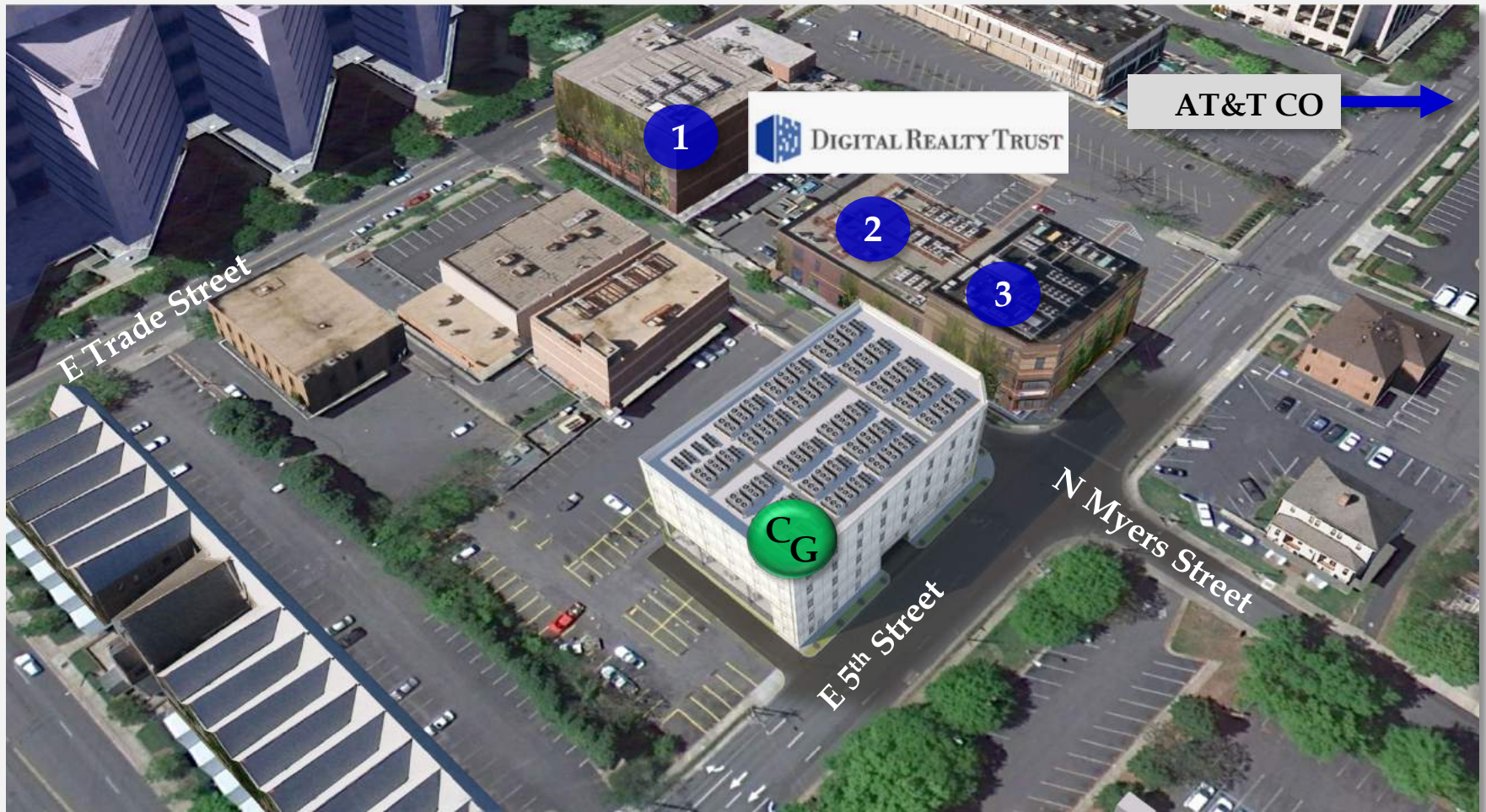
CHARLOTTE GATEWAY DATA CENTER

The Charlotte Gateway Data Center is located at the Network Access Point (NAP) in Charlotte, North Carolina. North Myers Street is the fiber hub of Charlotte, adjacent to the AT&T CO and home to a complex of data facilities occupied by numerous carriers, data center end users, colocation companies, and disaster recovery operations.



LOCATION

Charlotte Gateway, North Carolina



Digital Realty Trust owns three (3) fully occupied data center facilities across the street from the Charlotte Gateway Data Center

1 731 E Trade Street Data Center Facility

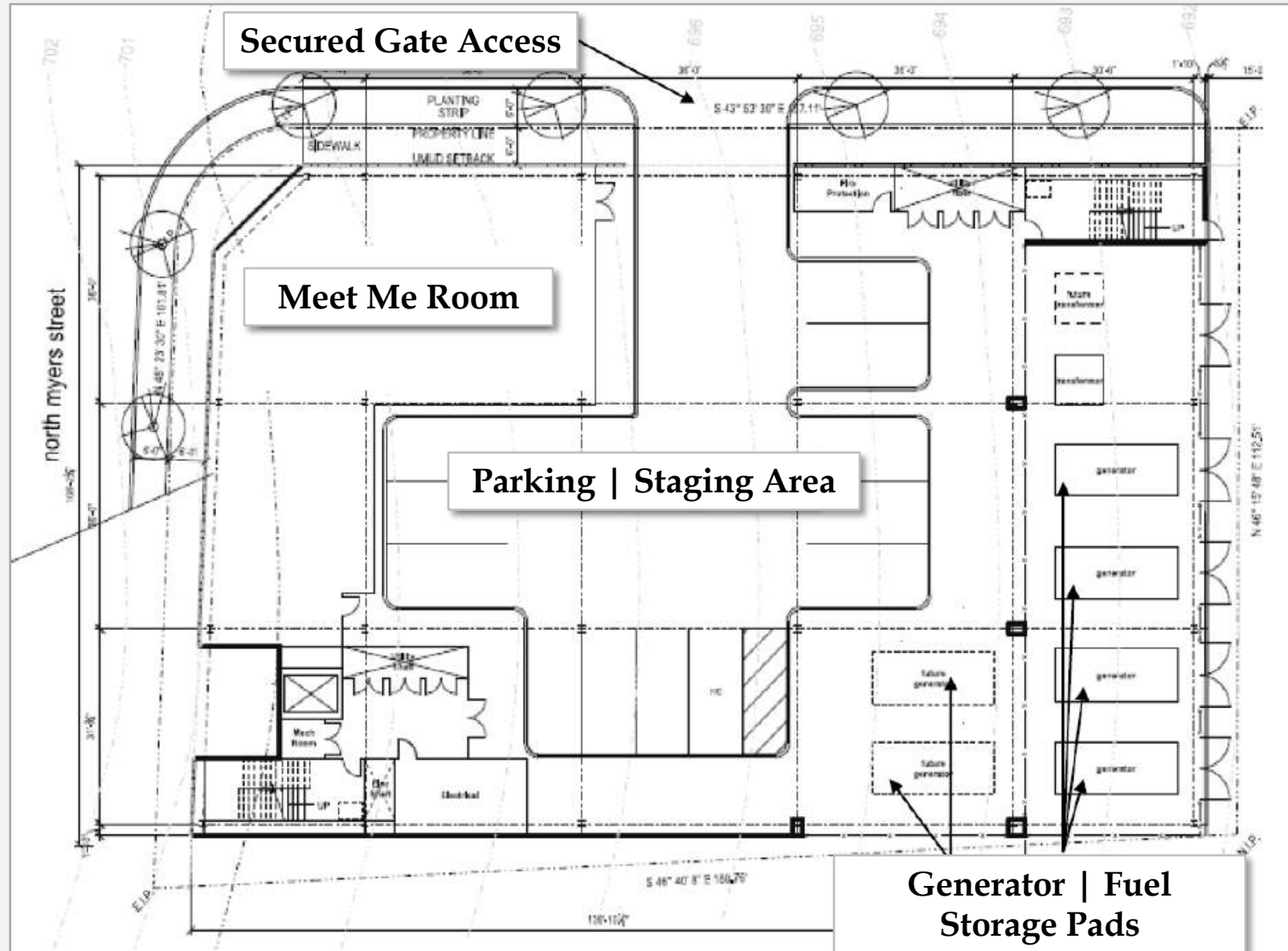
3 125 N Myers Street Data Center Facility

2 113 N Myers Street Data Center Facility

CG Charlotte Gateway Data Center - 120 N Myers Street

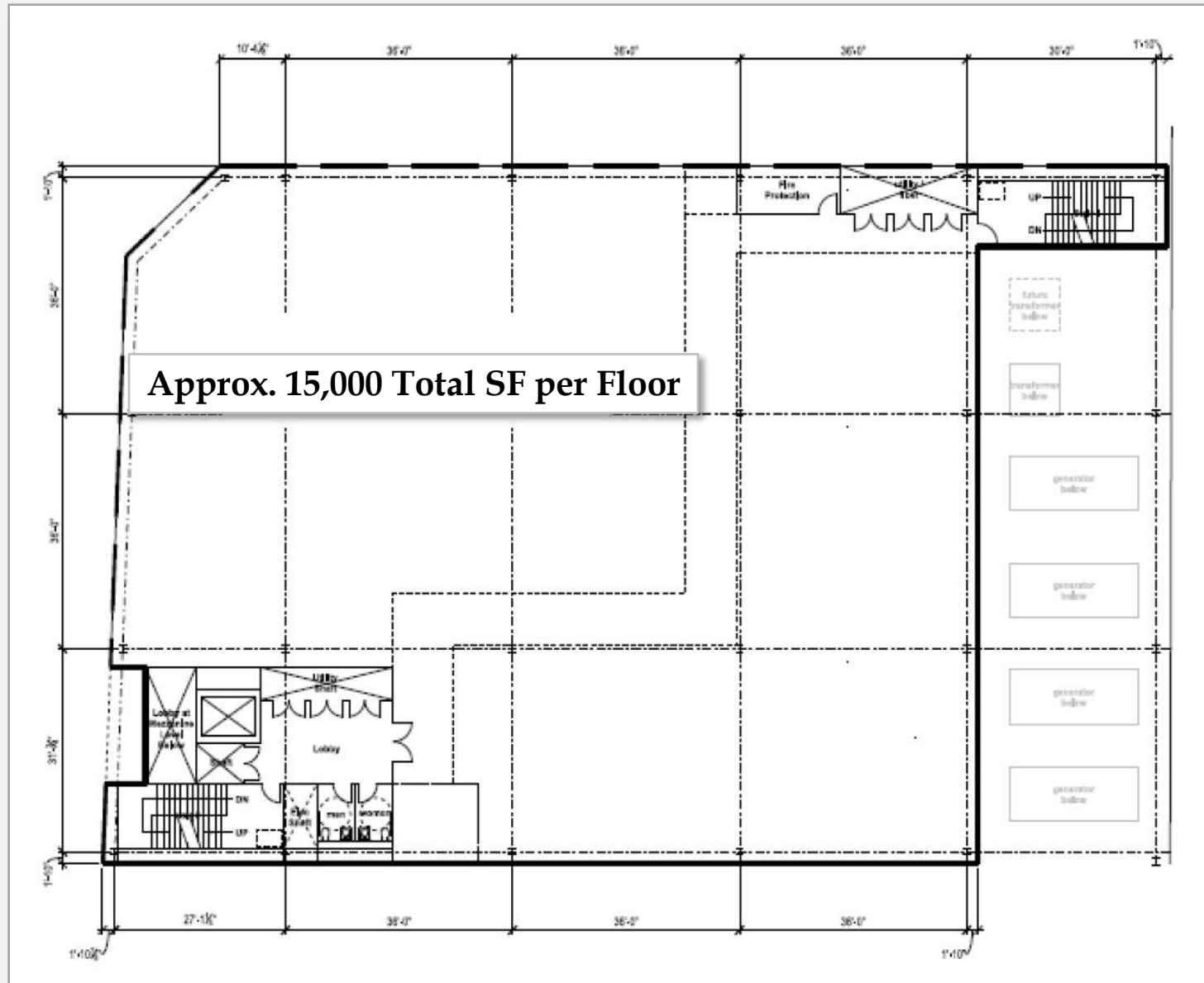
CONCEPTUAL FLOOR PLAN

GROUND FLOOR



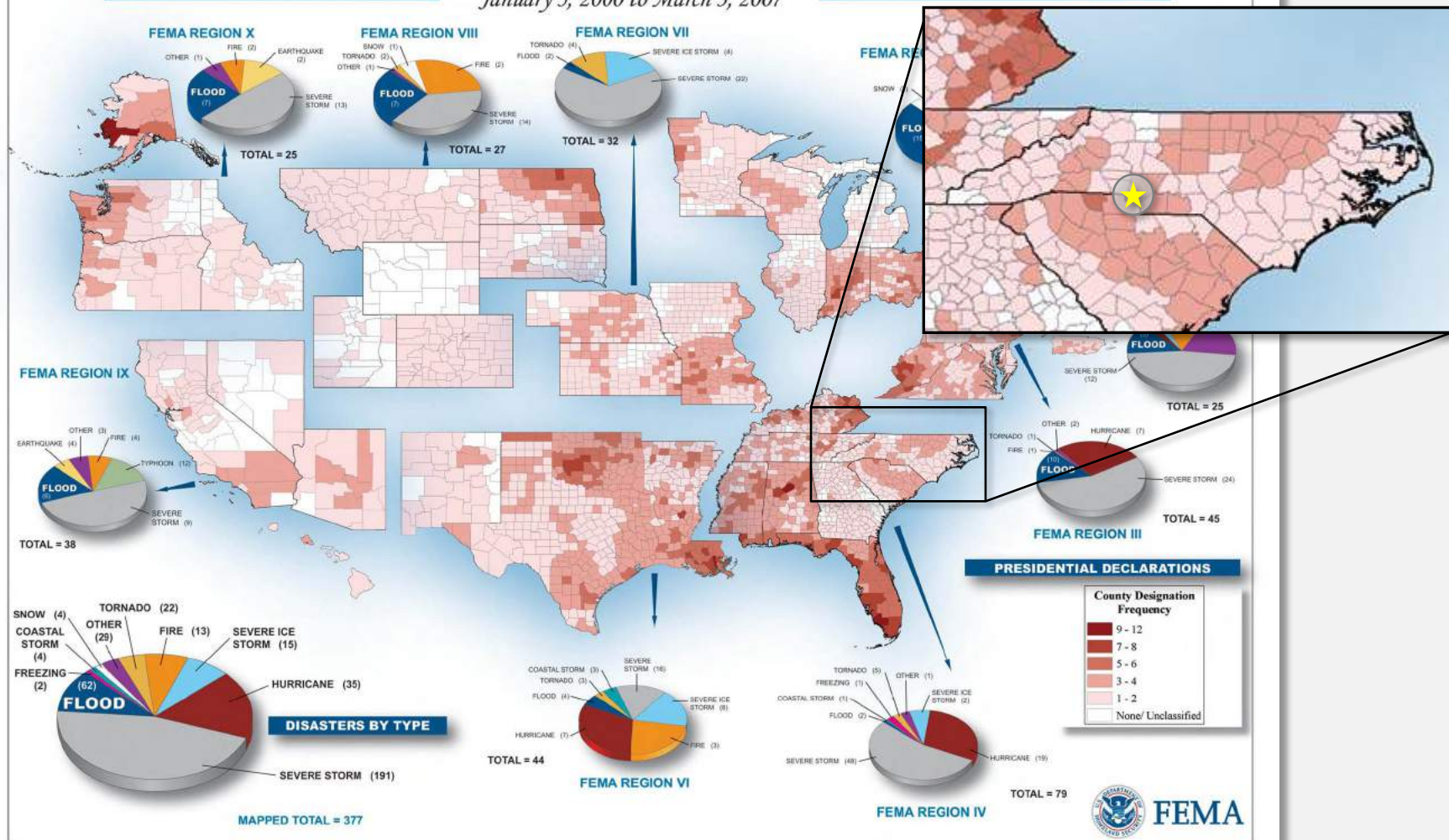
FLOOR PLAN

TYPICAL FLOOR PLAN



PRESIDENTIAL DISASTER DECLARATIONS

January 3, 2000 to March 3, 2007



REGIONAL PROFILE

Charlotte Gateway, North Carolina

Corporate Presence

The Charlotte, North Carolina area is home to ten (10) Fortune 500 Company headquarters, ranking sixth in the United States. In total, 274 of the Fortune 500 companies have facilities located in Charlotte. Additionally, over the past ten years, 6,790 new firms have invested over \$12 billion in new Charlotte facilities.

Charlotte as a Financial Powerhouse

Charlotte is renowned for its vibrant banking sector. With more than \$2.3 trillion in assets, it is the second largest financial center in the nation, behind only New York. There are 26 banks with 226 local branches, as well as a Federal Reserve branch located in Charlotte.

Business and Workforce Growth

According to the latest census numbers, between 2000 and 2010, Charlotte saw the largest increase in population in the United States. Charlotte has the 4th fastest job growth market in the country, as well as the 10th overall for economic growth in the country.



Low Natural Disaster Risks

Charlotte, North Carolina is located in an area known for its low risk of natural disasters. The area benefits greatly from an equitable climate with moderate year-round temperatures.

Access to High-Tech Workforce

North Carolina's 58-campus community college system is nationally recognized for its customized workforce training programs. UNC Charlotte is currently constructing the Energy Production Infrastructure Center (EPIC) to train the next generation of engineers and to conduct industry-led research and development projects..

The North Carolina Data Center Cluster

Over the past four (4) years, North Carolina has witnessed substantial data center investments. Google, Apple, Disney, Wipro Infocrossing, American Express, EMC, AT&T, and IBM among others have all positioned data centers in North Carolina.

AVAILABLE

CHARLOTTE GATEWAY DATA CENTER

Charlotte, North Carolina



Doug Hollidge:

doug@five9sdigital.com

704.651.2210

Chris Orr

co@romansproperties.com

704.619.7554

