

# NOW AVAILABLE CHARLOTTE DATA CENTER



FIVE 9s DIGITAL

# Opportunity

---

Free-standing built-out data center located in a network dense area of Charlotte, North Carolina:

- Available immediately
- 18,068 SF Free-Standing Data Center
- 12,000 SF of data center space plus electrical and mechanical areas, security entrance, office, conference, and break areas
- Existing Equipment and Infrastructure Included
- Excellent Metro and Long Haul Fiber Connectivity
- Power supplied by Duke Energy
- 2,000 kVA transformer
- 1.5 MW of data center equipment and infrastructure in-place
- Ramp to 5 MW in process with delivery by December 2026
- Tax Incentives



# Details

---

<b>Address:</b>	1612 Cross Beam Drive, Charlotte NC
<b>Building:</b>	Free-standing, one-level 18,068 SF hardened structure data center
<b>Parcel:</b>	1.42 acres~
<b>Condition:</b>	Equipped Data Center
<b>History:</b>	Operated as a data center
<b>Clear Height:</b>	16'~
<b>Zoning:</b>	Commercial - Historic use as a data center
<b>Parking:</b>	34 parking spaces on site

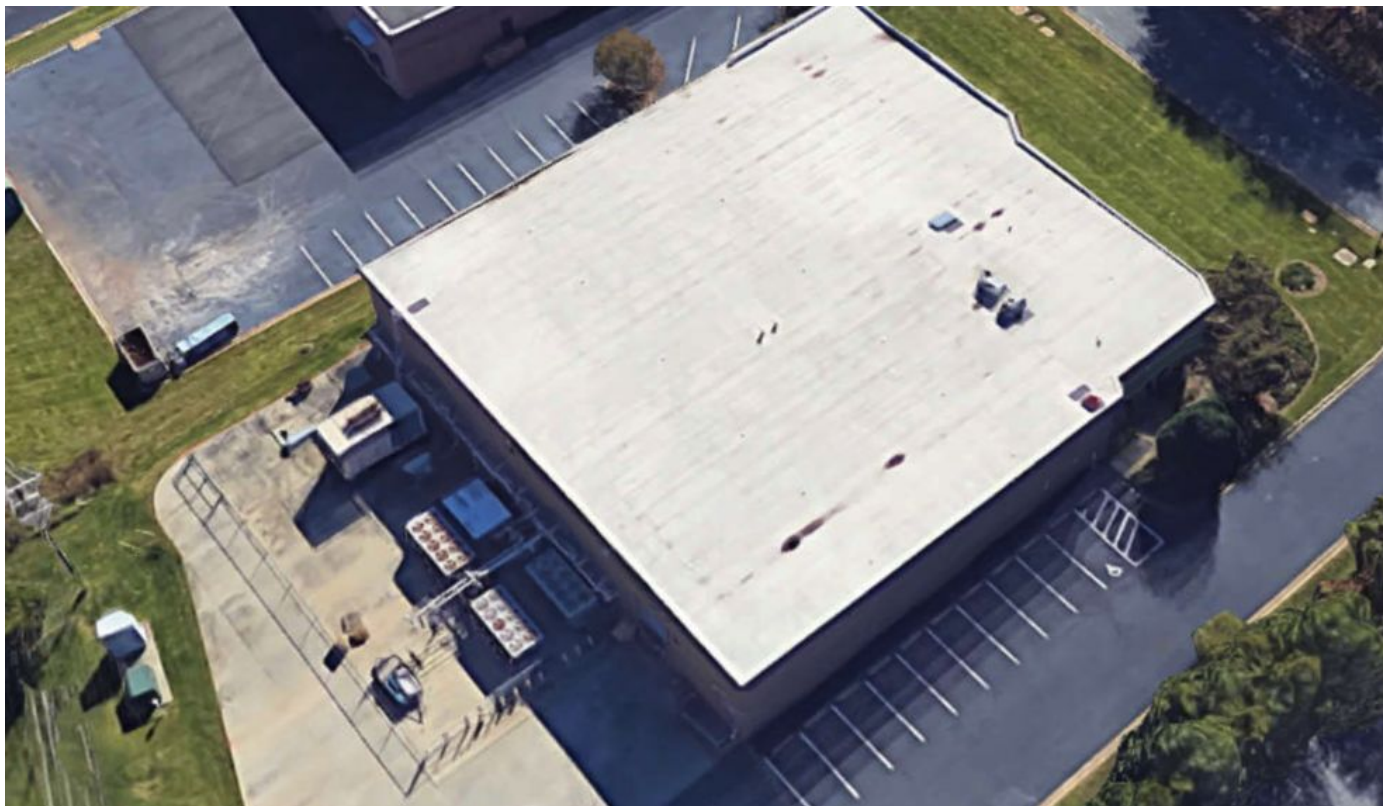


# Equipment

<b>Generator:</b>	1.5 MW generator with 1500 gallon fuel storage
<b>Transformer:</b>	2000 kVA dedicated transformer on-site
<b>Fuel Storage:</b>	1500 gallon diesel fuel storage tank
<b>Fire Suppression:</b>	Pre-action dry-pipe sprinkler system with dual detector activation
<b>Data Center Space:</b>	12,000 SF~ of data center space on grade, overhead distribution
<b>UPS:</b>	500 kVA UPS A1 and 250 kVA UPS A2 - Toshiba G6900s
<b>PDU:</b>	5 x 125 kW PDUs - United Power PDM4 for 4 units and 1 unit is a PDI PP2
<b>DC Plant:</b>	1200A
<b>Cooling:</b>	N+1 cooling, eight (8) Liebert CRAC units on glycol loop 3 - 100 ton Liebert dry coolers supporting heat rejection
<b>Connectivity:</b>	Meet-Me Room (MMR) connected to numerous metro and long haul fiber providers
<b>Security:</b>	Multi-layer security, dual authentication, biometric scanners & 24x7 monitored cameras
<b>Equipment Security:</b>	Fenced area allocated generator, cooling and fuel storage



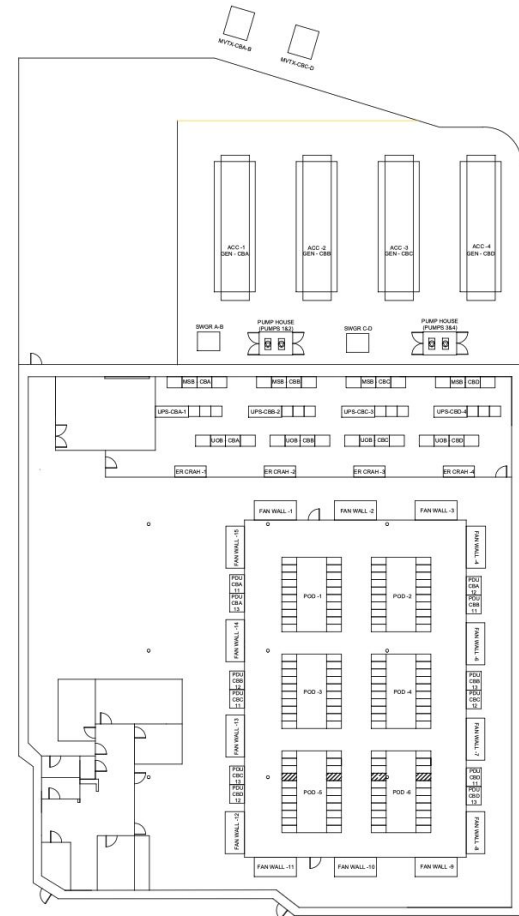
# Aerial



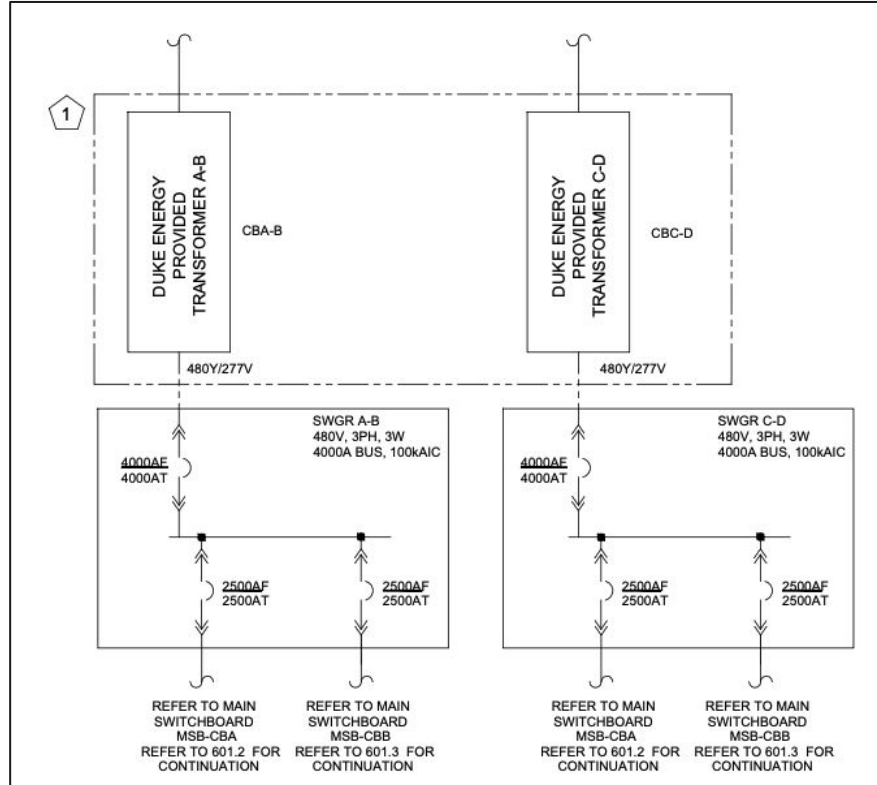
# 3.3 MW IT Load Design



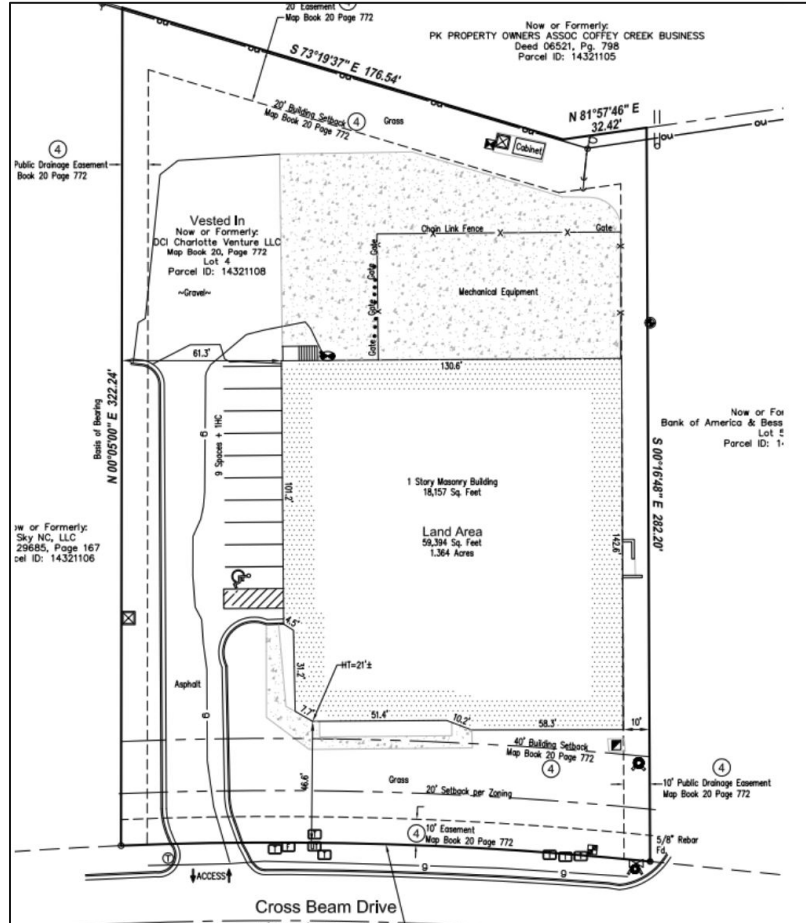
- Existing 1.5 MW Data Center
- 5 MW Utility Load scheduled delivery by Dec 2026
- Conceptual Design for 3.3 MW IT Load



# Electrical Ramp Design



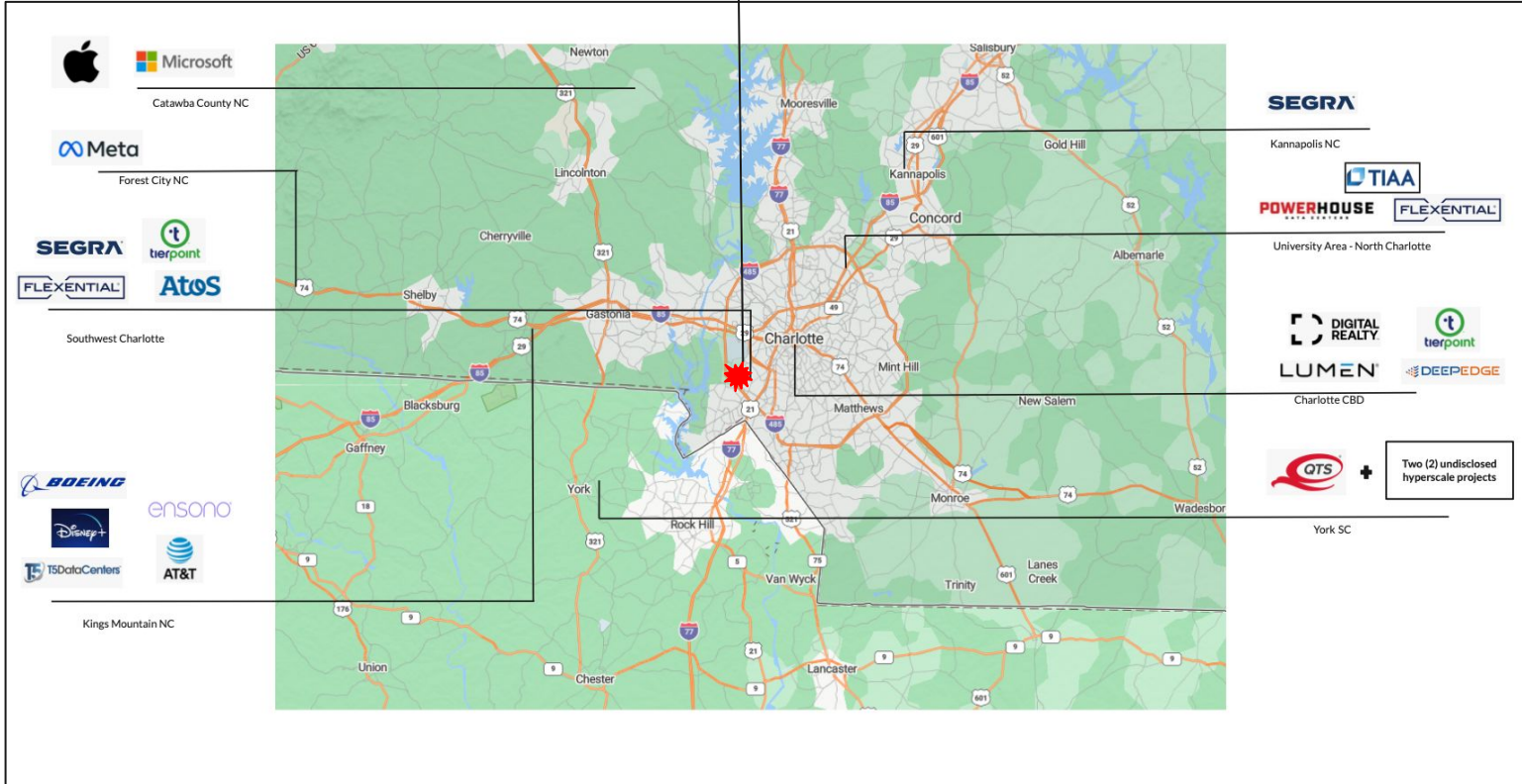
# Site Plan



# Location



1612 Cross Beam Data Center



# Power



BUILDING A SMARTER ENERGY FUTURE®

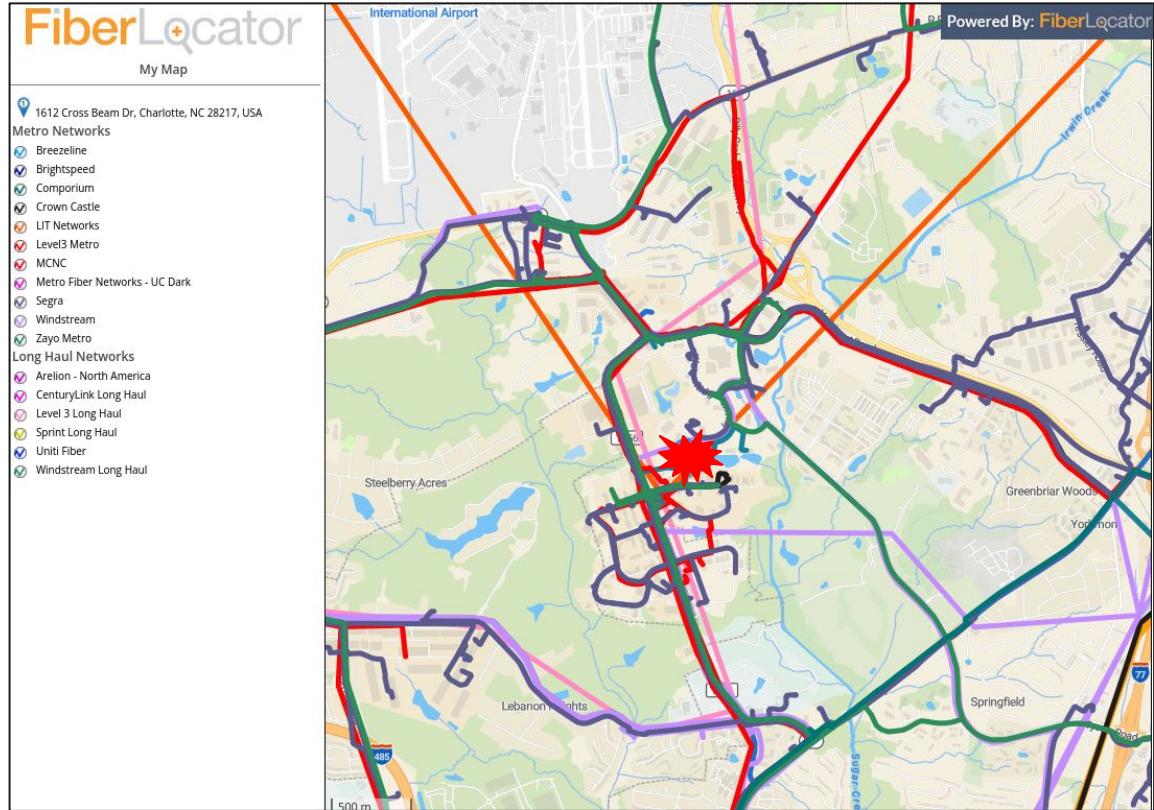
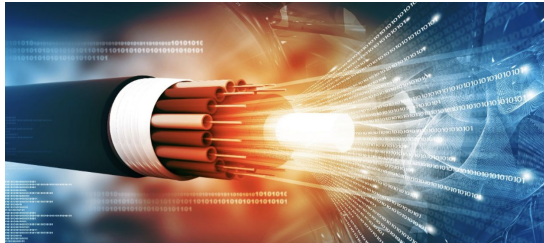
## Duke Energy supplied power:

- 2000 kVA existing transformer
- Ramp path to 5 MW
- Space in equipment yard for additional transformers and generators
- Power expansion opportunity
- Power cost incentives for qualifying data centers in the NC Duke Energy via the new Rider ED power program for high-load consumers



# Fiber

- Access to numerous diverse metro and long haul fiber connectivity on site
- Connectivity to the Charlotte CBD Carrier Hotel data center complex on N. Myers Street
- MMR in building



# Photos



# Photos



# Photos



# Photos



# Photos





# Contact

---

Doug Hollidge  
704.651.2210  
[Doug@Five9sDigital.com](mailto:Doug@Five9sDigital.com)

Chris Orr  
704.619.7554  
[CO@RomansProperties.com](mailto:CO@RomansProperties.com)

Aidan Hollidge  
704.806-7255  
[Aidan@Five9sDigital.com](mailto:Aidan@Five9sDigital.com)

