

1) Status of the notification

Final

2) Issuer

Name AGEAS
Identification number 0451-406-524

3) Reason for the notification

Acquisition or disposal of financial instruments that are treated as voting securities

4) Notification by

A parent undertaking or a controlling person

5) Persons subject to the notification requirement

Name	Address (for legal entities)
The Goldman Sachs Group, Inc.	Corporation Trust Center, 1209 Orange Street, Wilmington, DE 19801, USA

6) Persons that dispose of voting rights (only to be filled in if art. 7 of the Law applies)

Name	Address (for legal entities)

Please continue entering the information in **part II** concerning the persons referred to in Sections 5 and 6

Part II

7) Date on which the threshold is crossed

30/10/2020 (DD/MM/YYYY)

8) Threshold that is crossed (in %)

5

If the holding has fallen below the lowest threshold, you have the option of not entering any numbers in Section 10

9) Denominator

194,553,574

Please enter the denominator before filling in the data

10) Notified details

A) Voting rights	Previous notification	After the transaction			
		# of voting rights	# of voting rights		% of voting rights
Holder of voting rights		Linked to securities	Not linked to the securities	Linked to securities	Not linked to the securities
The Goldman Sachs Group, Inc.		0		0.00%	
Goldman Sachs International		3,256,285		1.67%	
Goldman Sachs Asset Management, L.P.		256,473		0.13%	
Goldman Sachs Asset Management International		14,597		0.01%	
Goldman Sachs Asset Management (Hong Kong) Limited		885		0.00%	
United Capital Financial Advisers, LLC		354		0.00%	

Subtotal		3,528,594		1.81%	
TOTAL		3,528,594	0	1.81%	0.00%




Start with "groups" of holders. Add subtotals with Σ , and then finish with the persons who are "alone".
For groups, start with the ultimate controlling natural person or legal entity.
The totals, subtotals and % will be updated once you have clicked on **<CALCULATE>**.

Type text here

B) Equivalent financial instruments		After the transaction					
Holders of equivalent financial instruments	Type of financial instrument	Expiration date	Exercise period or date	# of voting rights that may be acquired if the instrument is exercised	% of voting rights	Settlement	
Goldman Sachs International	Securities Lending		Open	3,547,204	1.82%	physical	--
Goldman Sachs & Co. LLC	Securities Lending		Open	1,300	0.00%	physical	--
Goldman Sachs International	Swap	09/12/2020		4,404,866	2.26%	cash	--
Goldman Sachs & Co. LLC	Swap	28/12/2020		169,790	0.09%	cash	--
Goldman Sachs International	Swap	24/11/2020		140,211	0.07%	cash	--
Goldman, Sachs & Co. Wertpapier GmbH	Swap	31/12/2030		57,500	0.03%	cash	--
Goldman Sachs International	Call Warrant	31/12/2030		55,746	0.03%	cash	--
Goldman Sachs International	CFD	12/08/2030		45,103	0.02%	cash	--
Goldman Sachs International	CFD	23/02/2023		33,894	0.02%	cash	--
Goldman Sachs International	CFD	28/10/2030		25,904	0.01%	cash	--
Goldman, Sachs & Co. Wertpapier GmbH	Swap	31/12/2030		10,000	0.01%	cash	--
Goldman Sachs International	Call Warrant	31/12/2030		9,499	0.00%	cash	--
Goldman Sachs International	CFD	20/08/2030		9,297	0.00%	cash	--
Goldman Sachs International	Swap	23/02/2023		9,145	0.00%	cash	--
Goldman, Sachs & Co. Wertpapier GmbH	Swap	31/12/2030		5,000	0.00%	cash	--
Goldman Sachs International	Swap	31/12/2030		5,000	0.00%	cash	--
Goldman, Sachs & Co. Wertpapier GmbH	Put Warrant	31/12/2030		5,000	0.00%	cash	--
Goldman Sachs International	Call Option	12/01/2021		4,940	0.00%	cash	--
Goldman Sachs International	Call Warrant	31/12/2030		4,750	0.00%	cash	--
Goldman, Sachs & Co. Wertpapier GmbH	Swap	31/12/2030		3,600	0.00%	cash	--
Goldman, Sachs & Co. Wertpapier GmbH	Put Warrant	31/12/2030		3,500	0.00%	cash	--
Goldman Sachs International	Swap	31/12/2030		3,500	0.00%	cash	--
Goldman, Sachs & Co. Wertpapier GmbH	Swap	31/12/2030		3,300	0.00%	cash	--
Goldman, Sachs & Co. Wertpapier GmbH	Swap	31/12/2030		3,300	0.00%	cash	--
Goldman Sachs International	Swap	31/12/2030		3,000	0.00%	cash	--
Goldman, Sachs & Co. Wertpapier GmbH	Swap	31/12/2030		3,000	0.00%	cash	--
Goldman Sachs International	Call Warrant	31/12/2030		3,000	0.00%	cash	--
Goldman Sachs International	Swap	31/12/2030		3,000	0.00%	cash	--
Goldman, Sachs & Co. Wertpapier GmbH	Swap	31/12/2030		3,000	0.00%	cash	--
Goldman, Sachs & Co. Wertpapier GmbH	Put Warrant	31/12/2030		3,000	0.00%	cash	--
Goldman, Sachs & Co. Wertpapier GmbH	Put Warrant	31/12/2030		3,000	0.00%	cash	--
Goldman Sachs International	Call Warrant	31/12/2030		2,994	0.00%	cash	--
Goldman, Sachs & Co. Wertpapier GmbH	Swap	31/12/2030		2,900	0.00%	cash	--
Goldman Sachs International	CFD	23/02/2023		2,709	0.00%	cash	--
Goldman, Sachs & Co. Wertpapier GmbH	Swap	31/12/2030		2,600	0.00%	cash	--
Goldman Sachs International	Swap	31/12/2030		2,600	0.00%	cash	--
Goldman, Sachs & Co. Wertpapier GmbH	Put Warrant	31/12/2030		2,600	0.00%	cash	--
Goldman Sachs International	Call Warrant	31/12/2030		2,560	0.00%	cash	--
Goldman Sachs International	Call Warrant	31/12/2030		2,500	0.00%	cash	--
Goldman Sachs International	CFD	20/08/2030		2,269	0.00%	cash	--
Goldman Sachs International	Call Warrant	31/12/2030		2,200	0.00%	cash	--
Goldman Sachs International	Call Warrant	31/12/2030		2,097	0.00%	cash	--
Goldman Sachs International	CFD	23/02/2023		2,053	0.00%	cash	--
Goldman Sachs International	CFD	20/08/2030		1,757	0.00%	cash	--
Goldman, Sachs & Co. Wertpapier GmbH	Swap	31/12/2030		1,700	0.00%	cash	--

Goldman, Sachs & Co. Wertpapier GmbH	Swap	31/12/2030		1,496	0.00%	cash	-
Goldman Sachs International	Call Warrant	31/12/2030		1,493	0.00%	cash	-
Goldman, Sachs & Co. Wertpapier GmbH	Swap	31/12/2030		1,400	0.00%	cash	-
Goldman, Sachs & Co. Wertpapier GmbH	Put Warrant	31/12/2030		1,200	0.00%	cash	-
Goldman Sachs International	Swap	31/12/2030		1,200	0.00%	cash	-
Goldman Sachs International	Swap	19/11/2020		1,025	0.00%	cash	-
Goldman Sachs International	CFD	24/06/2030		808	0.00%	cash	-
Goldman Sachs International	Swap	31/12/2030		600	0.00%	cash	-
Goldman, Sachs & Co. Wertpapier GmbH	Put Warrant	31/12/2030		600	0.00%	cash	-
Goldman Sachs International	Call Warrant	31/12/2030		590	0.00%	cash	-
Goldman Sachs International	Call Warrant	31/12/2030		385	0.00%	cash	-
Goldman Sachs International	CFD	28/10/2030		362	0.00%	cash	-
Goldman Sachs International	Call Warrant	31/12/2030		200	0.00%	cash	-
Goldman Sachs International	Swap	31/12/2030		200	0.00%	cash	-
Goldman, Sachs & Co. Wertpapier GmbH	Put Warrant	31/12/2030		200	0.00%	cash	-
Goldman Sachs International	CFD	23/02/2023		166	0.00%	cash	-
Goldman Sachs International	CFD	23/10/2023		161	0.00%	cash	-
Goldman Sachs International	Swap	31/12/2030		100	0.00%	cash	-
Goldman, Sachs & Co. Wertpapier GmbH	Put Warrant	31/12/2030		100	0.00%	cash	-
Goldman Sachs International	CFD	20/08/2030		53	0.00%	cash	-
Goldman Sachs International	Call Option	02/11/2020		38	0.00%	cash	-
							+
TOTAL				8,628,265	4.43%		

 **The totals** will be updated once you have clicked on <CALCULATE>

TOTAL (A & B)	# of voting rights	% of voting rights
CALCULATE	12,156,859	6.25%

11) Full chain of controlled undertakings through which the holding is effectively held, if applicable

Please refer to Annexure - Structure Chart

12) In case of proxy voting for only one GM

Holder will cease to hold / will hold again 0 voting rights as of (DD/MM/YYYY)

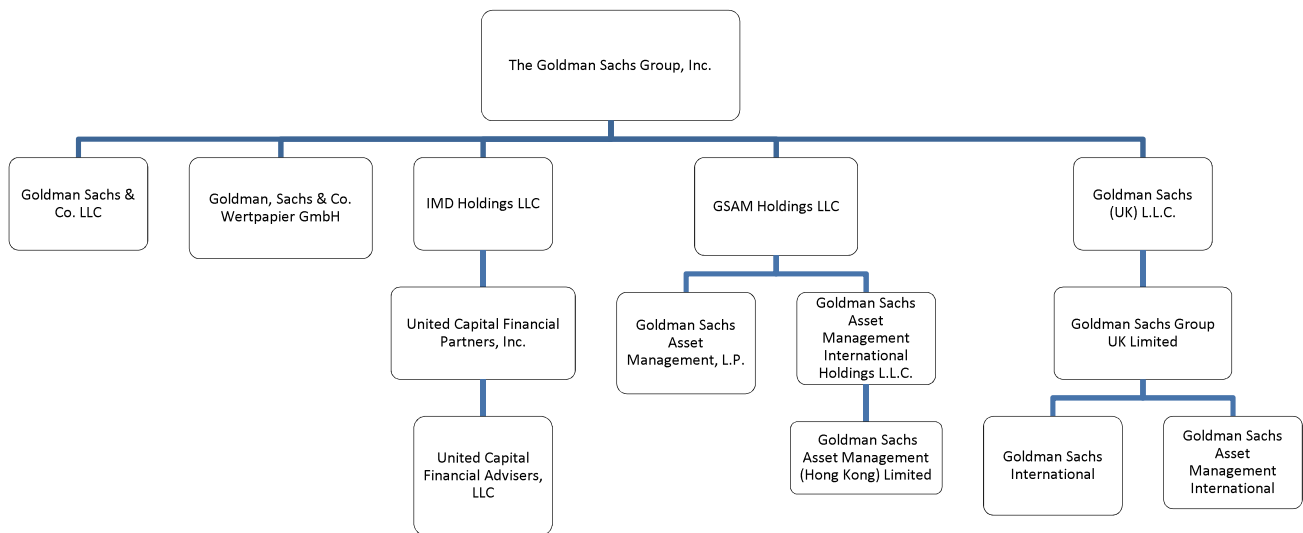
13) Additional information

Done at

On (DD/MM/YYYY)

Name & capacity

Signature 



Note: The above structure chart reflecting the chain of controlled undertakings is based on voting rights only. For the purpose of aggregation and representation, only entities that have more than 50% of the voting shares are regarded as a controlled undertaking under the substantial shareholder disclosure rules. The structure chart comprises only GS entities which are part of the notification.

Chain of Controlled Undertakings:

- GOLDMAN SACHS INTERNATIONAL IS CONTROLLED BY GOLDMAN SACHS GROUP UK LIMITED WHICH IS CONTROLLED BY GOLDMAN SACHS (UK) L.L.C. WHICH IS CONTROLLED BY THE GOLDMAN SACHS GROUP, INC.
- GOLDMAN SACHS ASSET MANAGEMENT, L.P. IS CONTROLLED BY GSAM HOLDINGS LLC WHICH IS CONTROLLED BY THE GOLDMAN SACHS GROUP, INC.
- GOLDMAN SACHS & CO. LLC IS CONTROLLED BY THE GOLDMAN SACHS GROUP, INC.
- GOLDMAN, SACHS & CO. WERTPAPIER GMBH IS CONTROLLED BY THE GOLDMAN SACHS GROUP, INC.
- UNITED CAPITAL FINANCIAL ADVISERS, LLC IS CONTROLLED BY UNITED CAPITAL FINANCIAL PARTNERS, INC. WHICH IS CONTROLLED BY IMD HOLDINGS LLC WHICH IS CONTROLLED BY THE GOLDMAN SACHS GROUP, INC.
- GOLDMAN SACHS ASSET MANAGEMENT INTERNATIONAL IS CONTROLLED BY GOLDMAN SACHS GROUP UK LIMITED WHICH IS CONTROLLED BY GOLDMAN SACHS (UK) L.L.C. WHICH IS CONTROLLED BY THE GOLDMAN SACHS GROUP, INC.
- GOLDMAN SACHS ASSET MANAGEMENT (HONG KONG) LIMITED IS CONTROLLED BY GOLDMAN SACHS ASSET MANAGEMENT INTERNATIONAL HOLDINGS L.L.C. WHICH IS CONTROLLED BY GSAM HOLDINGS LLC WHICH IS CONTROLLED BY THE GOLDMAN SACHS GROUP, INC.